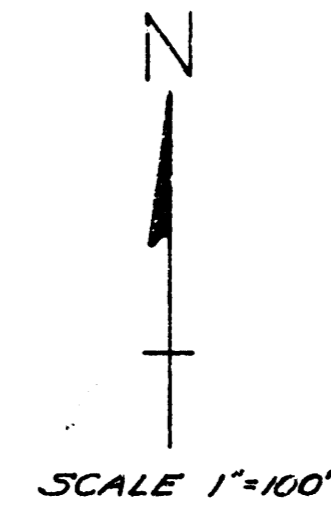


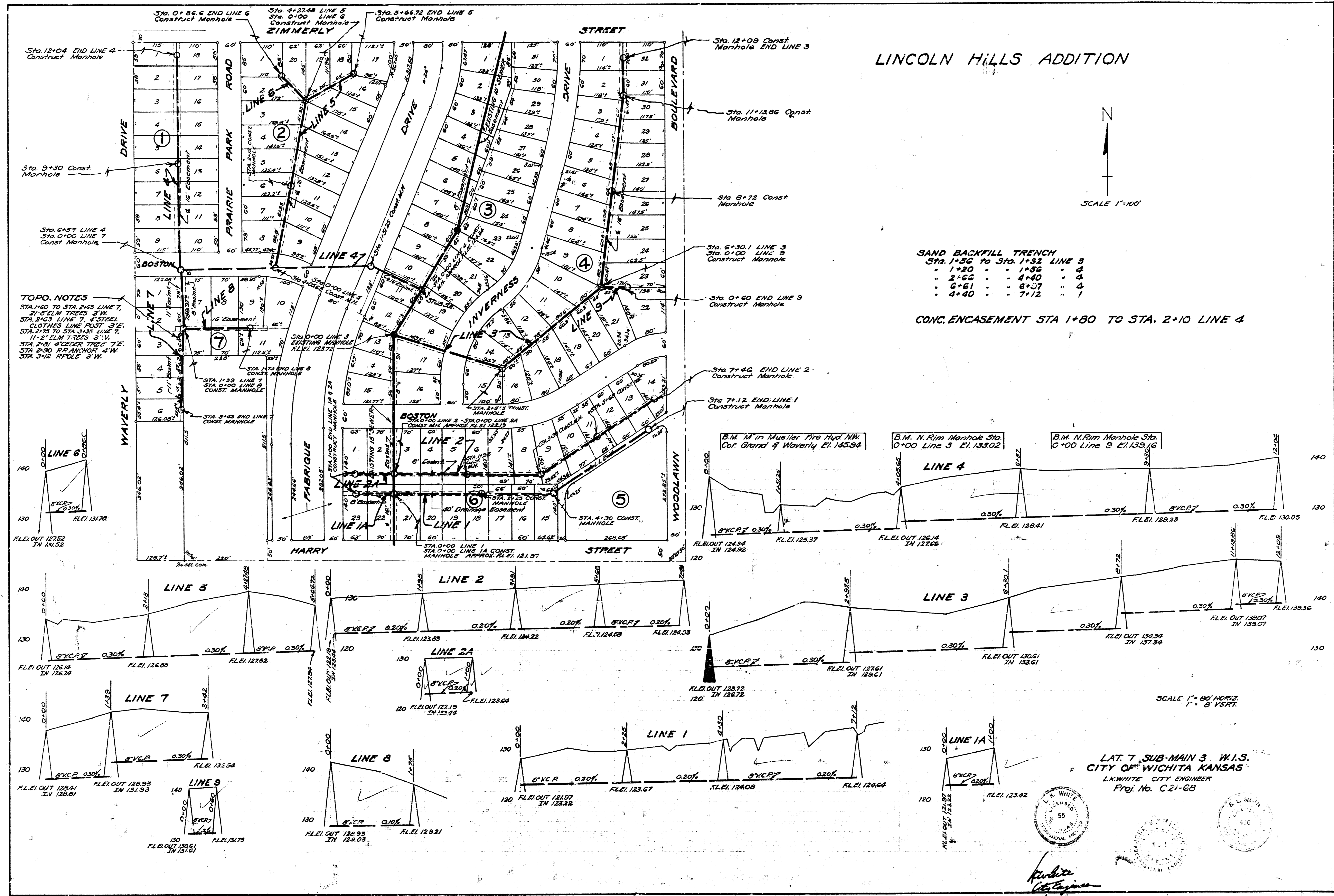
# LINCOLN HILLS ADDITION



**SAND BACKFILL TRENCH**

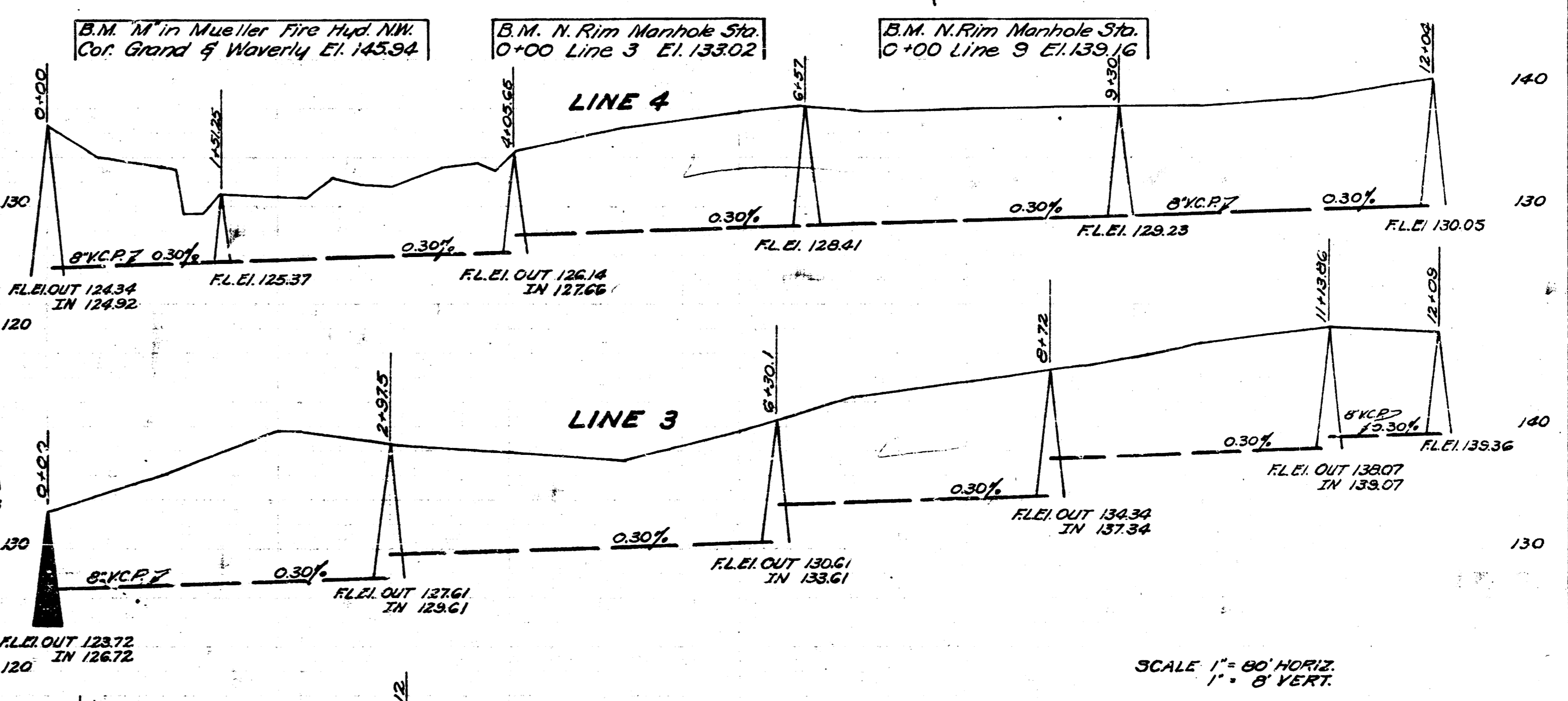
Sta. 1+50 to Sta. 1+52	LINE 3	
1+20	1+56	4
2+60	4+40	4
6+61	6+37	4
4+40	7+12	1

**CONC. ENCASEMENT STA 1+80 TO STA. 2+10 LINE 4**



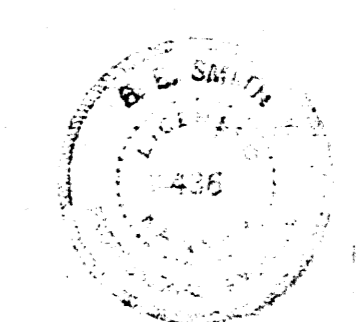
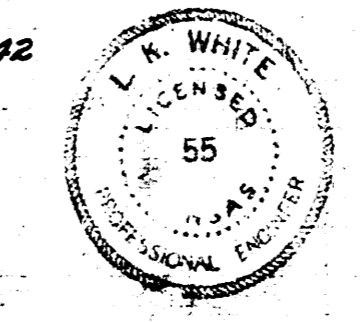
**TOPO. NOTES**  
 STA. 1+00 TO STA. 2+63 LINE 7,  
 2" ELM TREES 3" W.  
 STA. 2+63 LINE 7, 2" STEEL  
 CLOTHES LINE POST 3" E.  
 STA. 3+75 TO STA. 3+83 LINE 7,  
 11" ELM TREES 3" W.  
 STA. 3+83 4" CEDAR TREE 7" E.  
 STA. 3+30 4" FRANCHISE 4" W.  
 STA. 3+15 4" POLE 3" W.

11-23-51  
 J.L.A.  
 Checked by  
 Note Book No. 587



SCALE 1" = 60' HORIZ.  
 1" = 8' VERT.

LAT. 7. SUB-MAIN 3 W.I.S.  
 CITY OF WICHITA KANSAS  
 L.K. WHITE, CITY ENGINEER  
 Proj. No. C-21-68



*L.K. White*  
 City Engineer