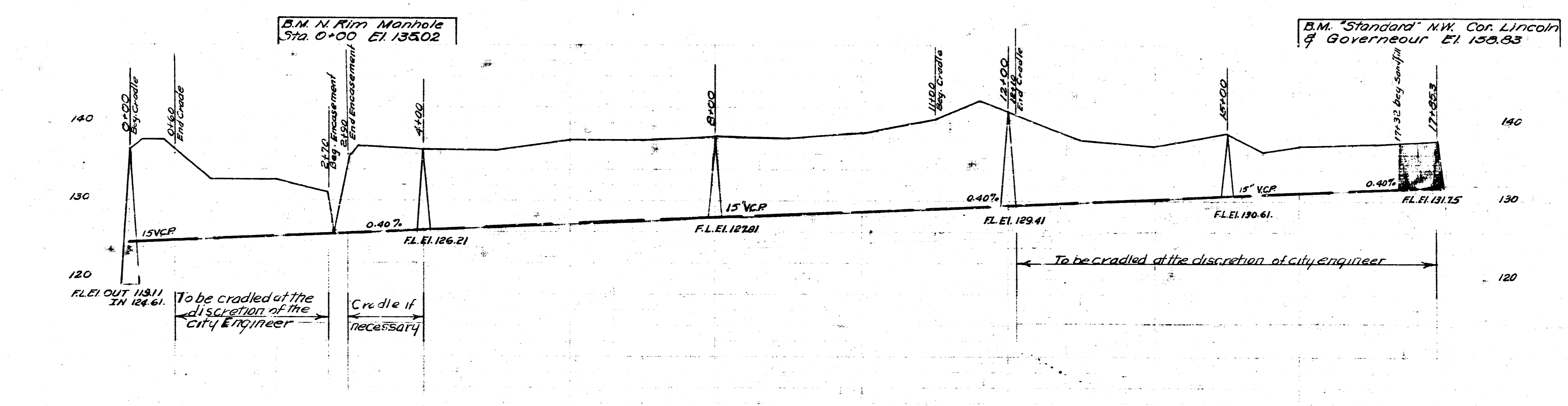
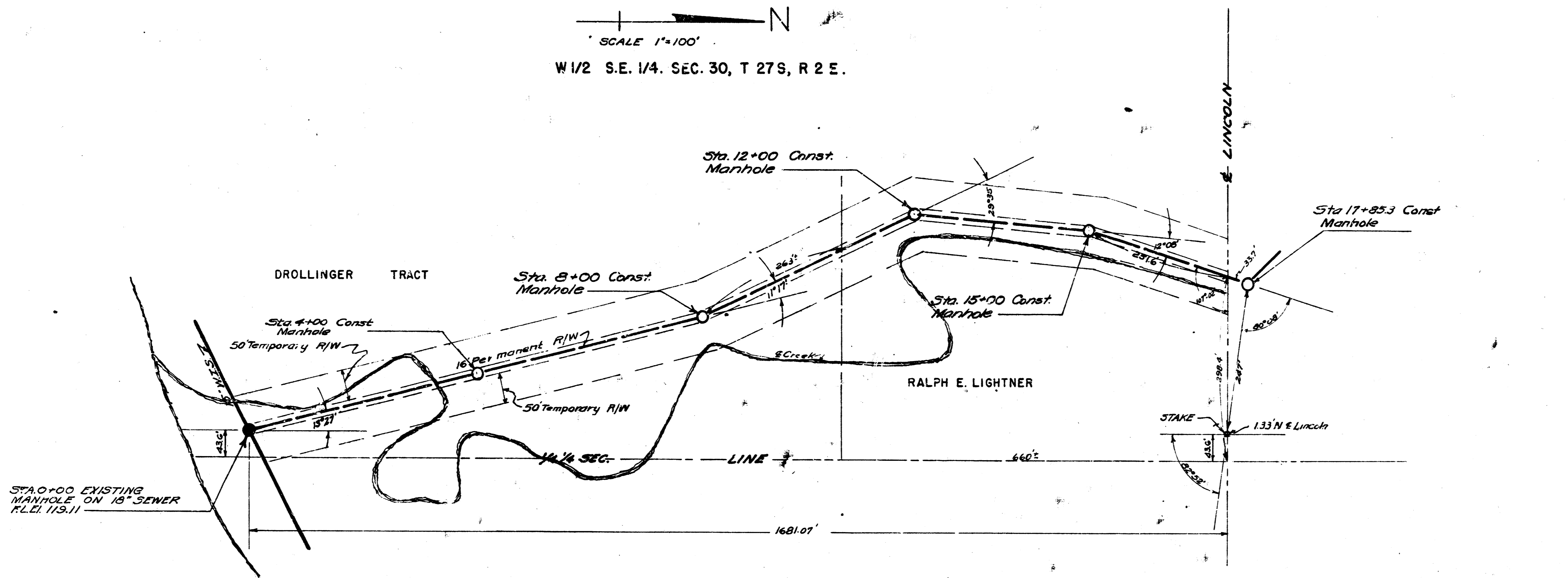


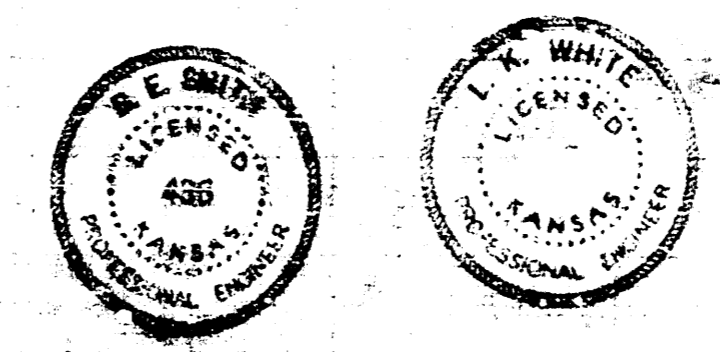
SCALE 1"=100'
 W 1/2 S.E. 1/4. SEC. 30, T 27S, R 2 E.



SCALE 1"=80' Horiz.
 1"=5' Vert.

4-15-52
 Drawn by
 Checked by
 Note Book No. 56-667

SUB. MAIN 5 W.I.S.
 CITY OF WICHITA KANSAS
 L.K. WHITE CITY ENGINEER
 Proj. No. C-21-53



L.K. White
 City Engineer
 May-1-1952

EASTRIDGE SIXTH ADDITION
Scale: 1"=100'

