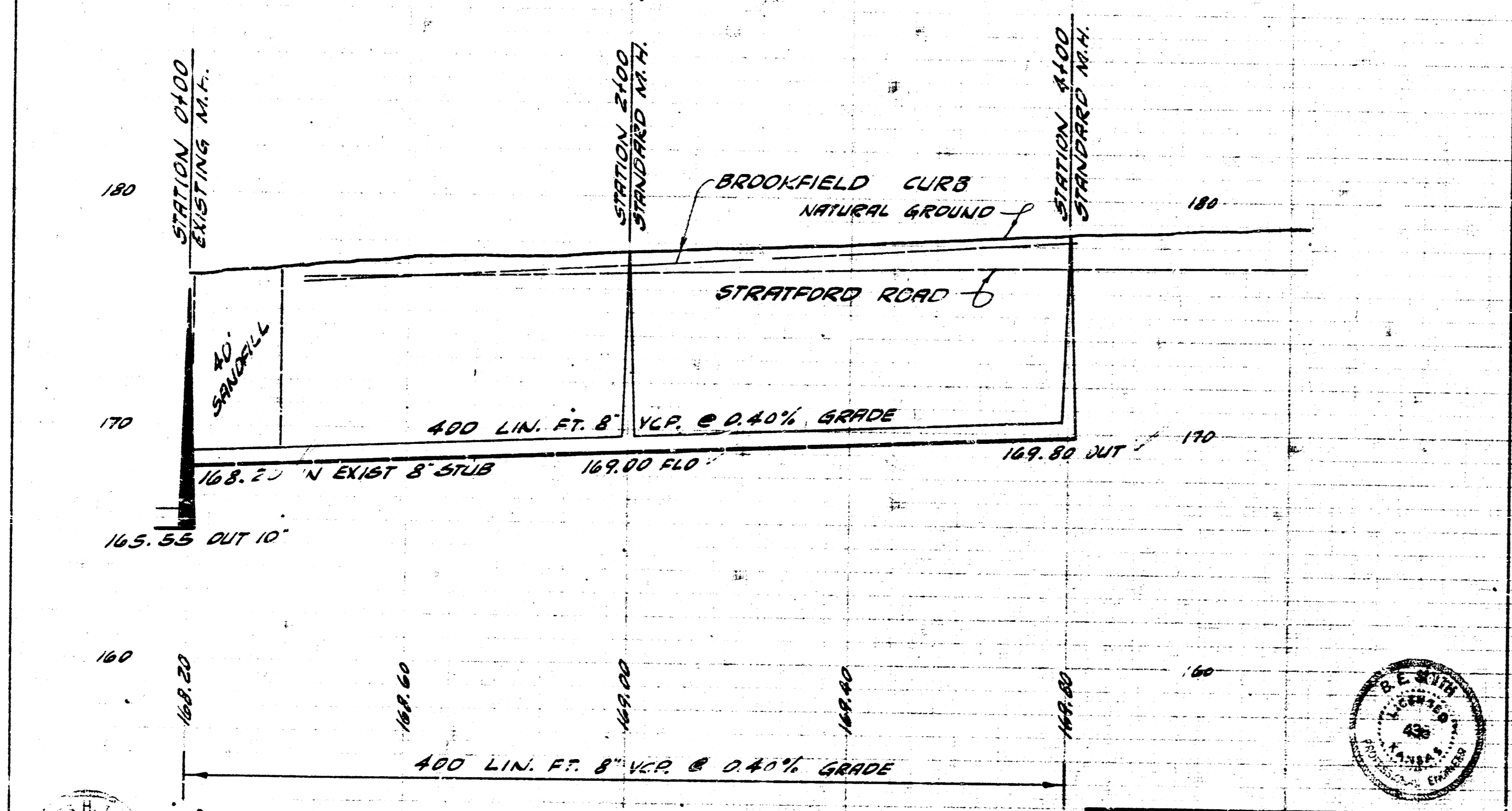
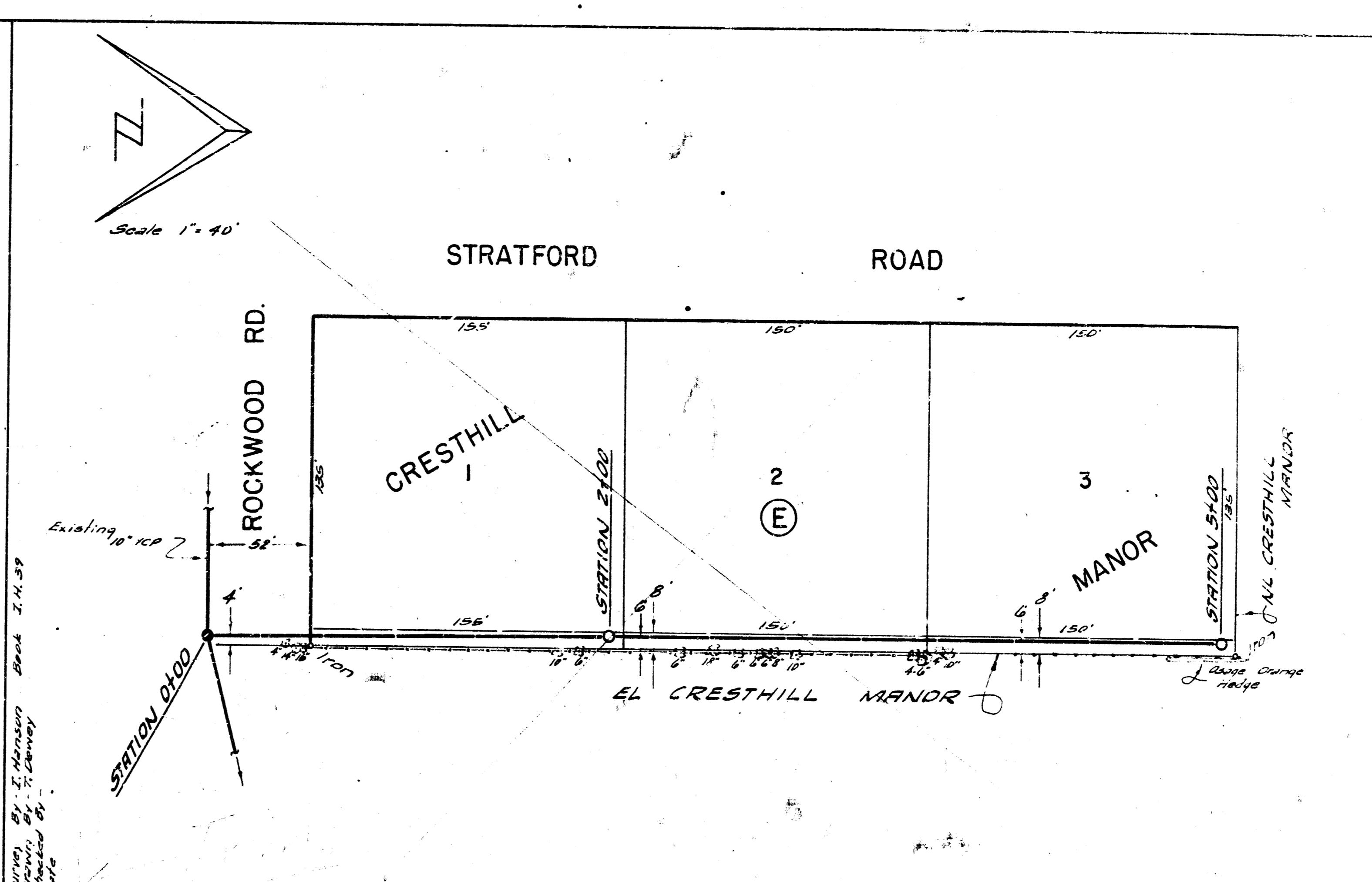


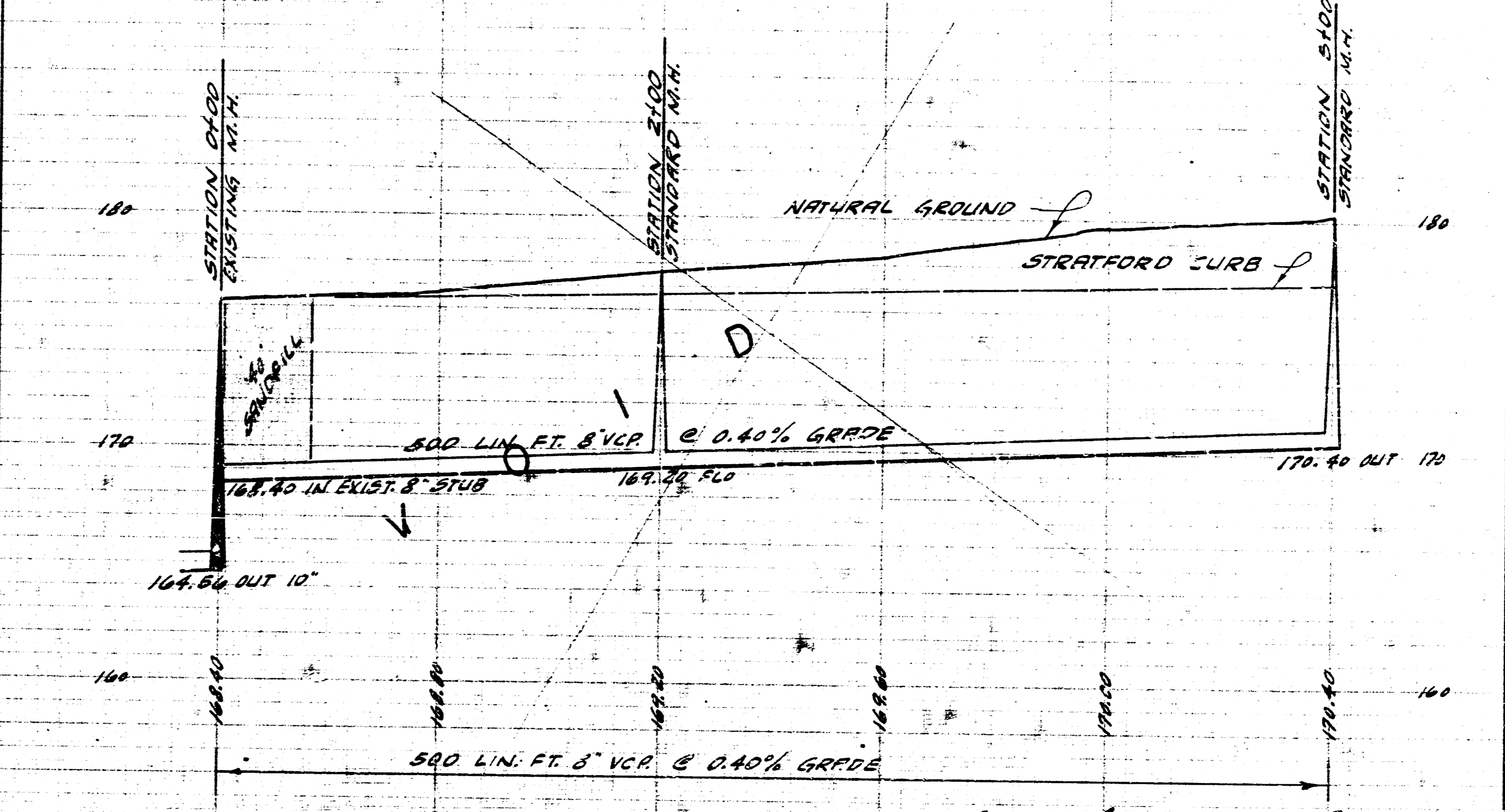
B.M. 175.97 50. RIM. MH. 4.5 NL ROCKWOOD, 29.20' E WL ARMOUR



LATERAL 18 SUB. 5A W.I.S.
CITY OF WICHITA, KANSAS.
B.E. SMITH CITY ENGINEER
PROJ. NO. C20-37 DATE: APRIL 1963



B.M. 175.97 50. RIM. MH. 4.5 NL ROCKWOOD, 29.20' E WL ARMOUR



LATERAL 19 SUB. 5A W.I.S.
CITY OF WICHITA, KANSAS
B.E. SMITH CITY ENGINEER
PROJ. NO. C20-38 DATE: