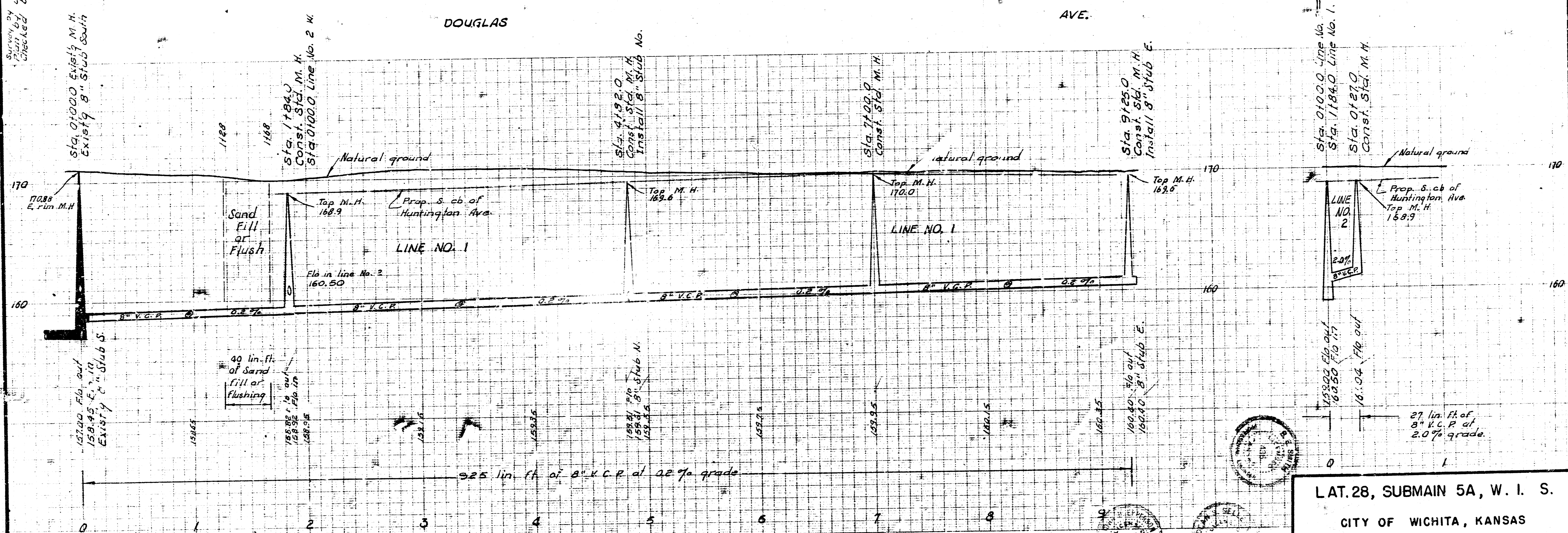
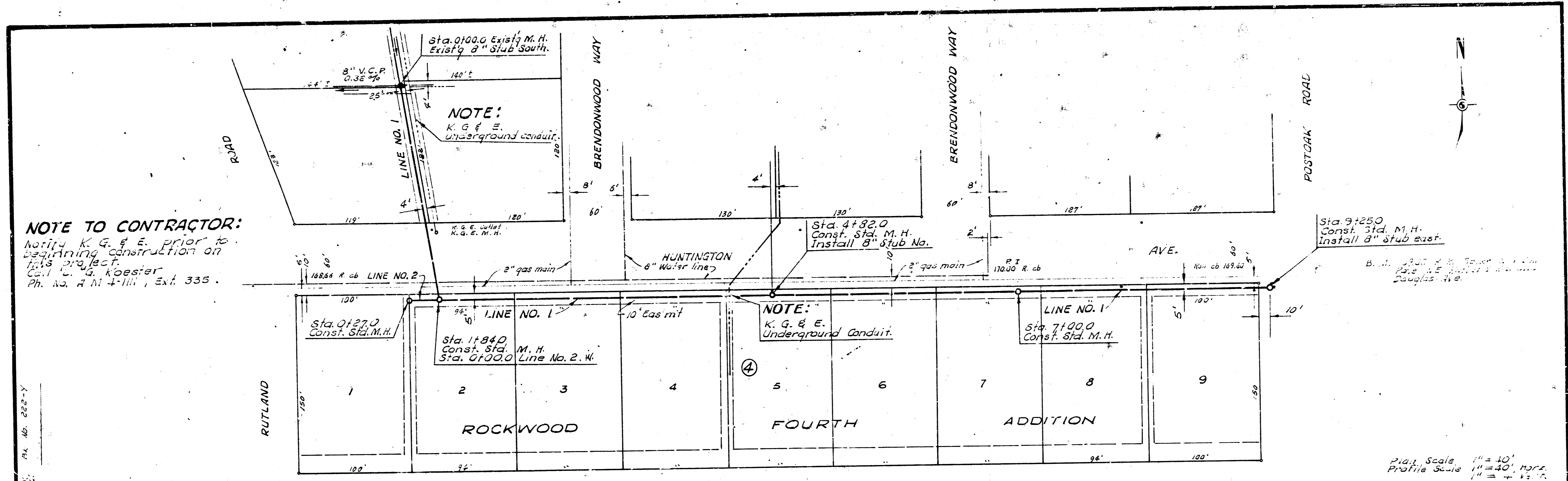


NOTE TO CONTRACTOR:
 Notify K.G. & E. prior to beginning construction on this project.
 Call C. G. Koester
 Ph. No. 214-1111, Ext. 335.



LAT. 28, SUBMAIN 5A, W. I. S.
 CITY OF WICHITA, KANSAS
 B. E. SMITH CITY ENGINEER
 APRIL 1965 PROJECT NO. C25-4

2 11 5 2