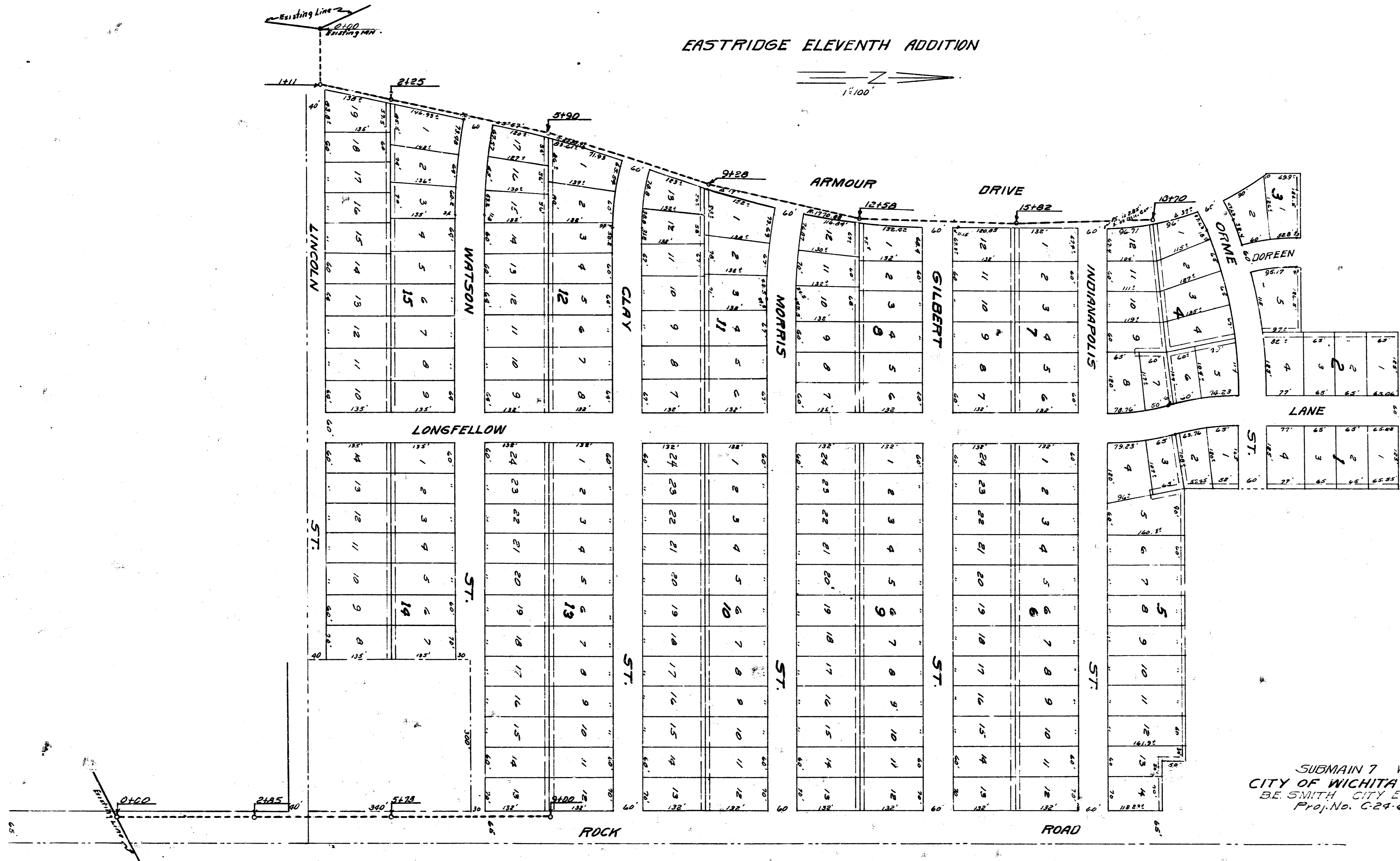
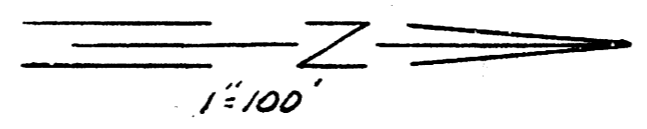


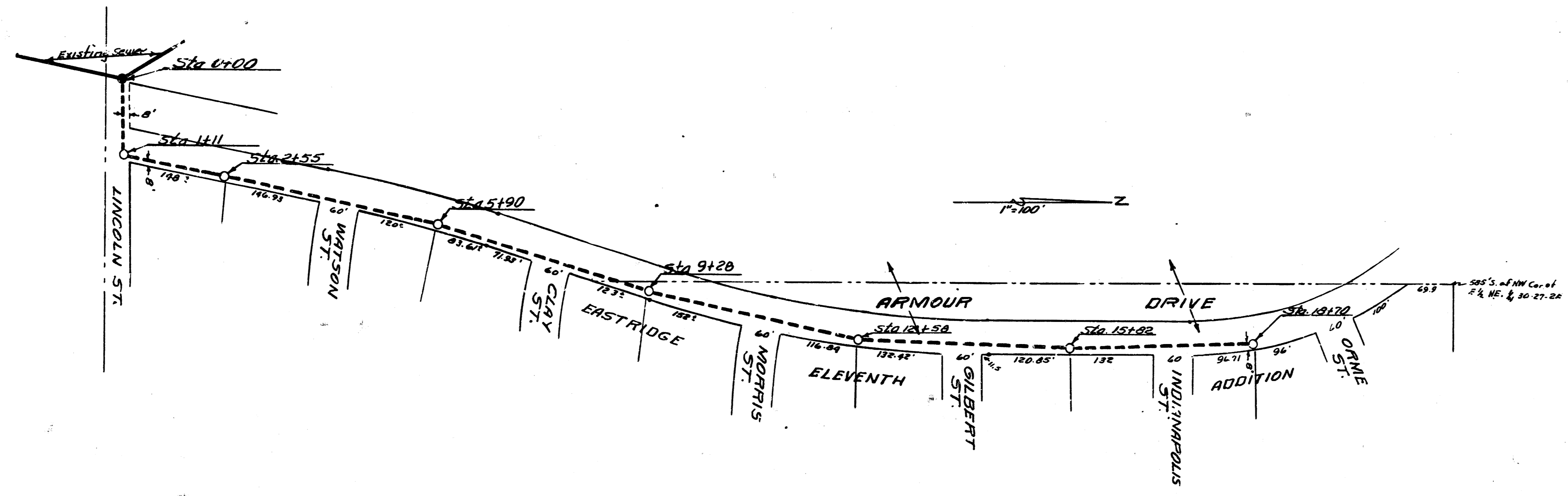
11-10-63
Drawn by: M.C. Conroy
Checked by: M. W. - M. 20

EASTRIDGE ELEVENTH ADDITION

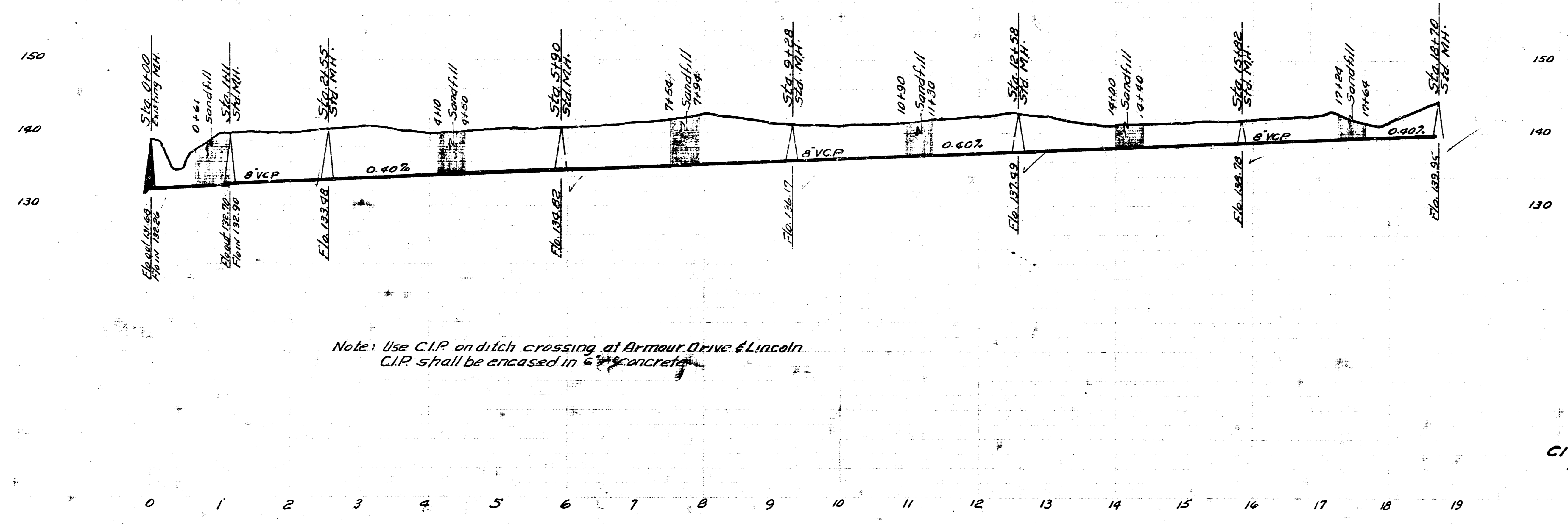


SUBMAIN 7 W15
CITY OF WICHITA KANSAS
B.E. SMITH, CITY ENGINEER
Proj. No. C-24-63

11-19-58
 Plan by
 Checked by
 Book No.

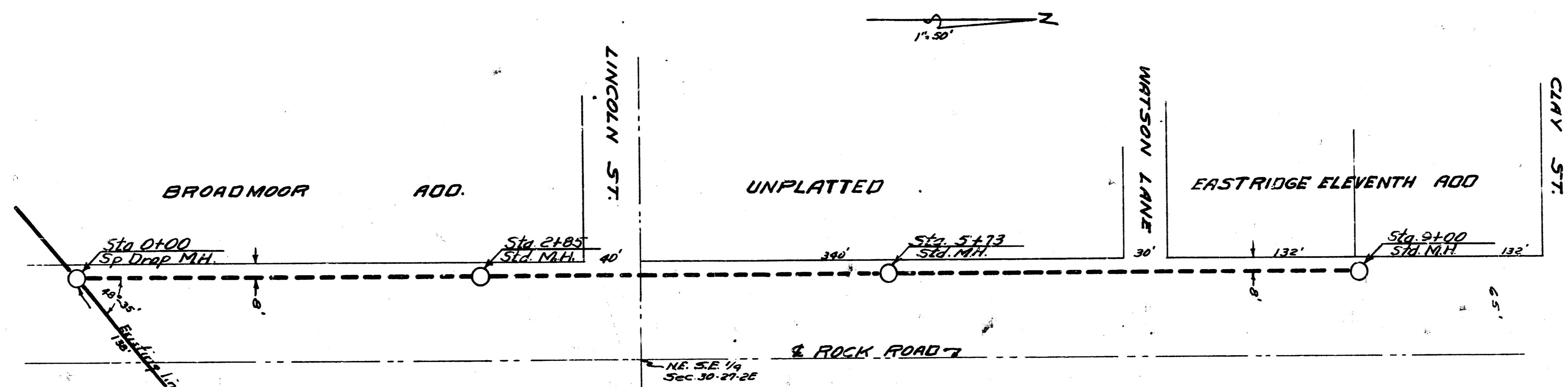


B.M. 140.91 "M" in Mueller F.P. NW. cor. Armour Dr. & Lincoln
 139.96 So. 117' MH. 0+00



Note: Use C.I.P. on ditch crossing at Armour Drive & Lincoln
 C.I.P. shall be encased in 6" concrete

SUBMAIN 7 WIS.
 CITY OF WICHITA KANS.
 BE SMITH CITY ENGINEER
 Proj. No. C-24-63



B.M. 142.42 RR SPIKE H.L.P. Lincoln E.S. Rock Road

