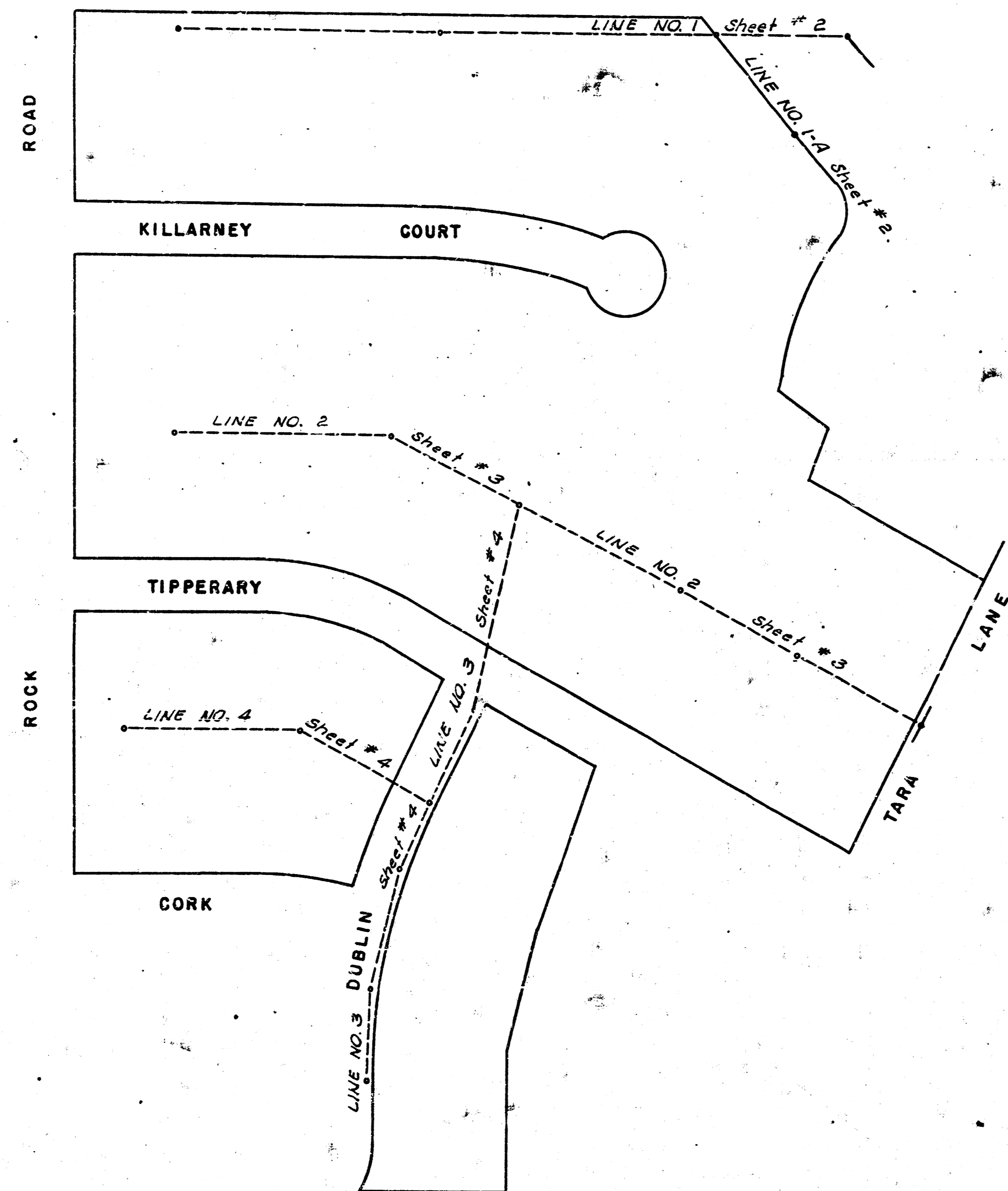


Surveyed by C.H. Mills, 8/1/13 City
Drawn by S. R. W., 10/1/13 City
Checked by
Date



Scale 1" = 100'

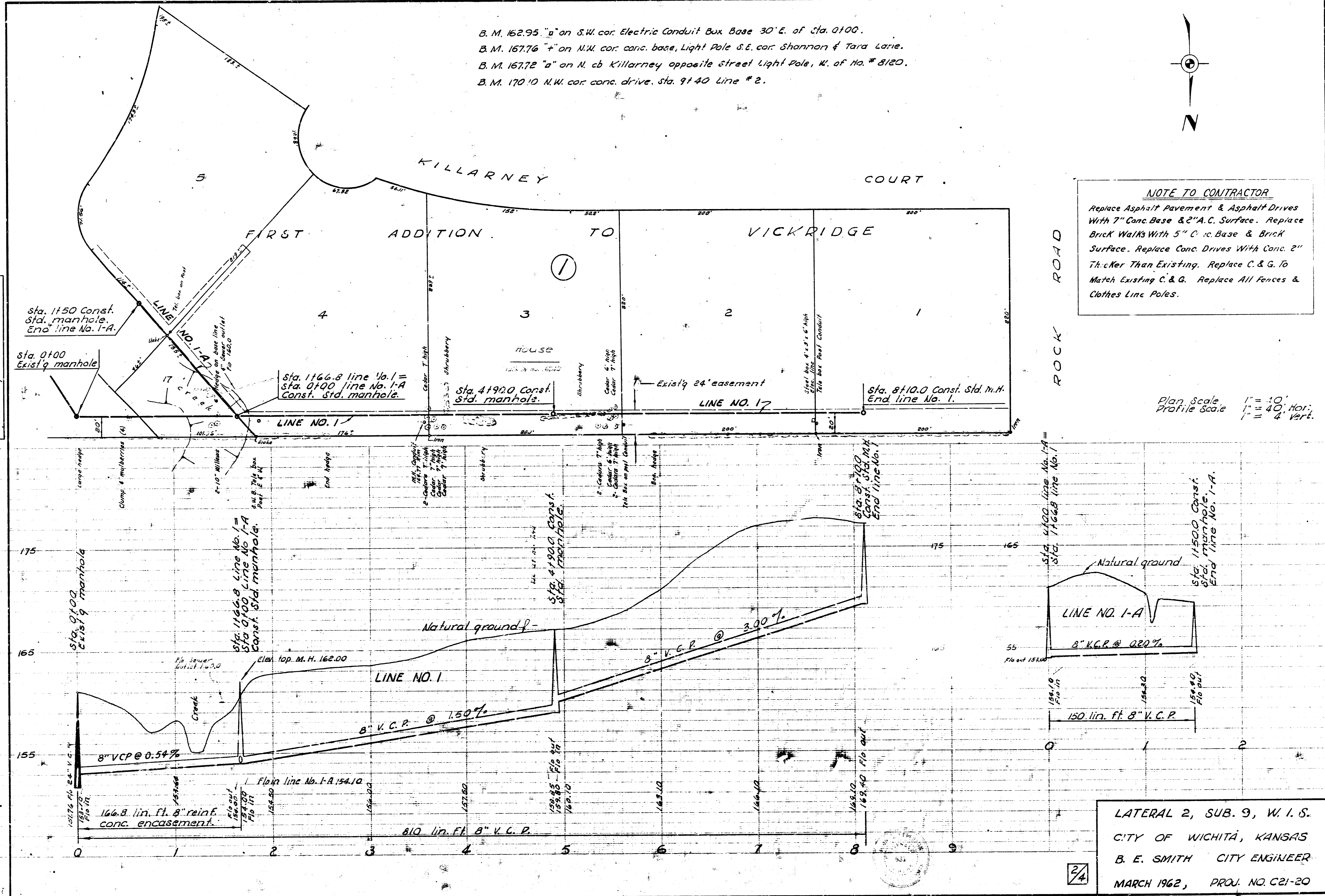
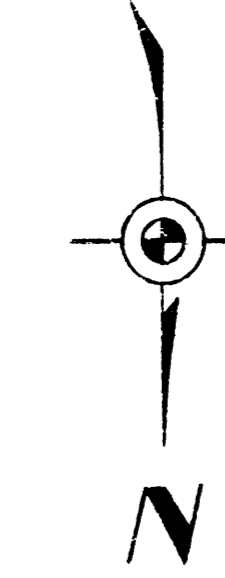
LOCATION MAP
LAT. 2, SUB. 9, W.I.S.
CITY OF WICHITA
B. E. SMITH CITY ENGINEER
PROJ. NO. C 21-20



LATERAL 2, SUB. 9, W.I.S.
PROJ. NO. C 21-20

Survey C.H. Mills
 Bl. 133 C.H.M.
 Bl. 84 C.H.M.
 Checked by

B.M. 162.95 "a" on S.W. cor. Electric Conduit Box Base 30' E. of Sta. 0100.
 B.M. 167.76 "b" on N.W. cor. conc. base, Light Pole S.E. cor. Shannon & Tara Lane.
 B.M. 167.72 "a" on N. cb Killarney opposite Street Light Pole, W. of No. # 8120.
 B.M. 170.10 N.W. cor. conc. drive. Sta. 9140 Line # 2.

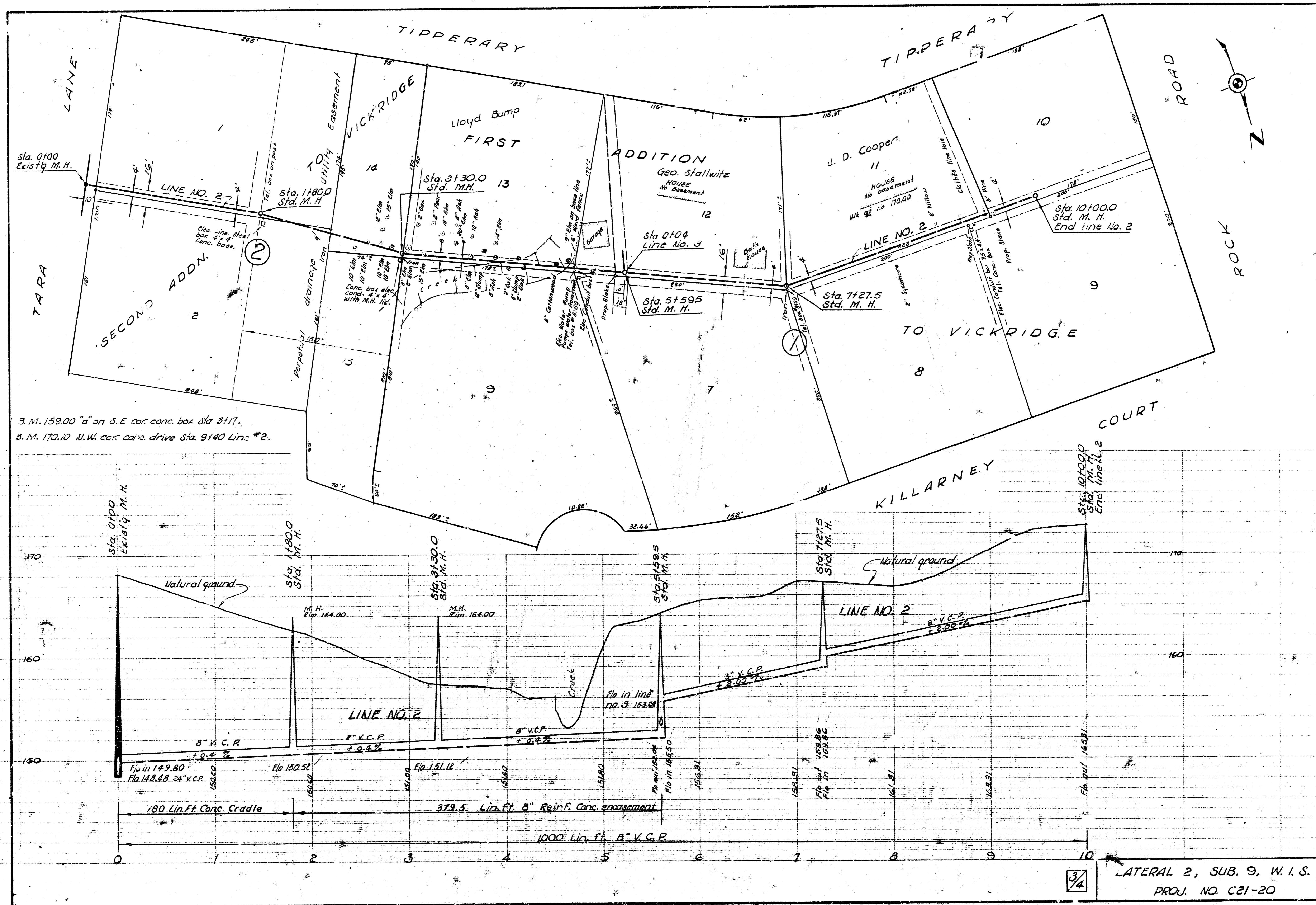


NOTE TO CONTRACTOR
 Replace Asphalt Pavement & Asphalt Drives
 With 7" Conc. Base & 2" A.C. Surface. Replace
 Brick Walks With 5" C. c. Base & Brick
 Surface. Replace Conc. Drives With Conc. 2"
 Thicker Than Existing. Replace C. & G. To
 Match Existing C. & G. Replace All fences &
 Clothes Line Poles.

Plan Scale 1" = 40'
 Profile Scale 1" = 4' Vert.

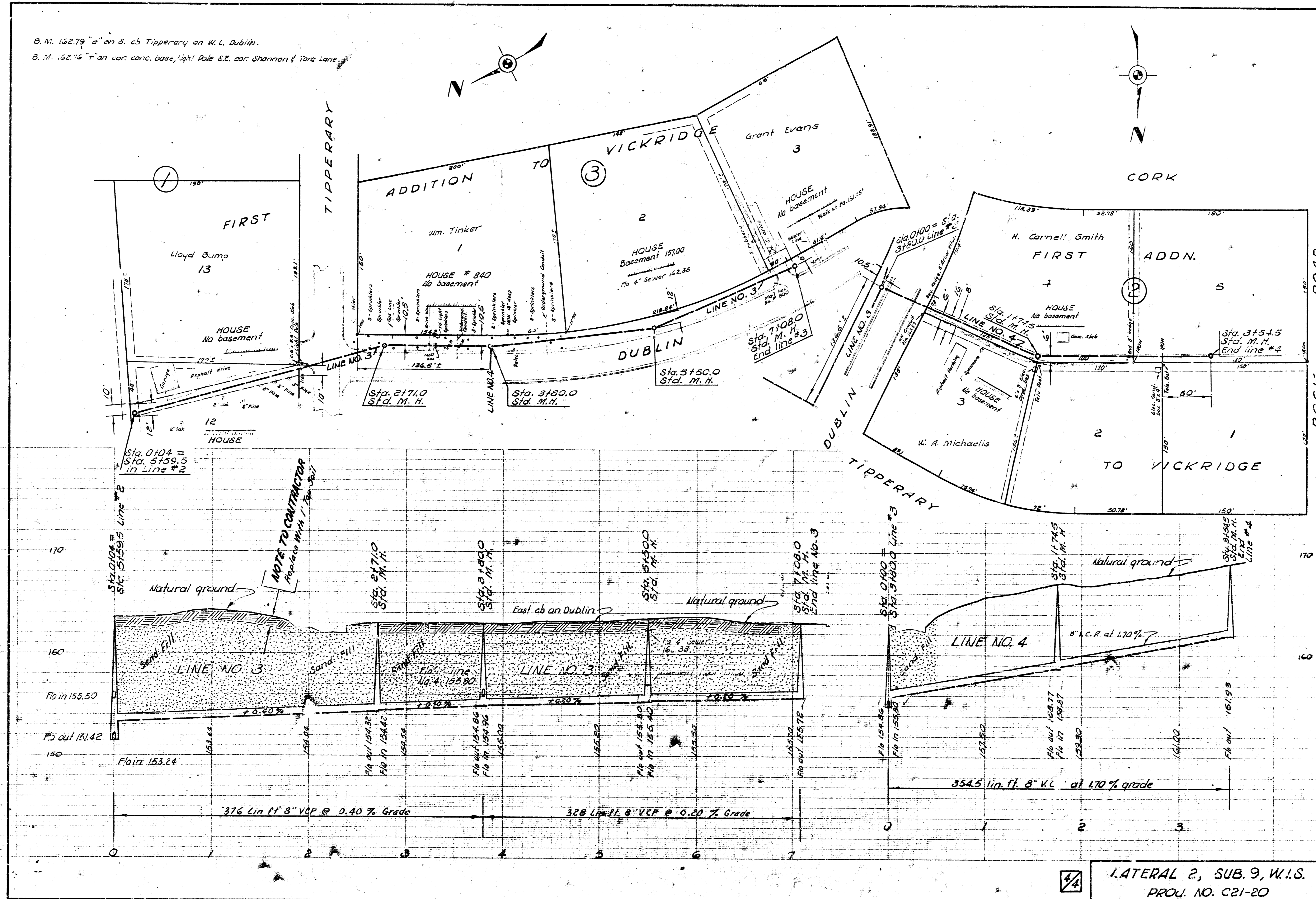
LATERAL 2, SUB. 9, W. I. S.
 CITY OF WICHITA, KANSAS
 B. E. SMITH CITY ENGINEER
 MARCH 1962, PROJ. NO. C21-20

24



3/4 LATERAL 2, SUB. 9, W.I.S.
 PROJ. NO. C21-20

B. M. 152.79 "a" on S. E. of Tipperary on W. L. Dublin.
 B. M. 152.76 "F" on cor. conc. base, light Pole S.E. cor. Shannon & Tara Lane.



44
 LATERAL 2, SUB. 9, W.I.S.
 PROJ. NO. C21-20