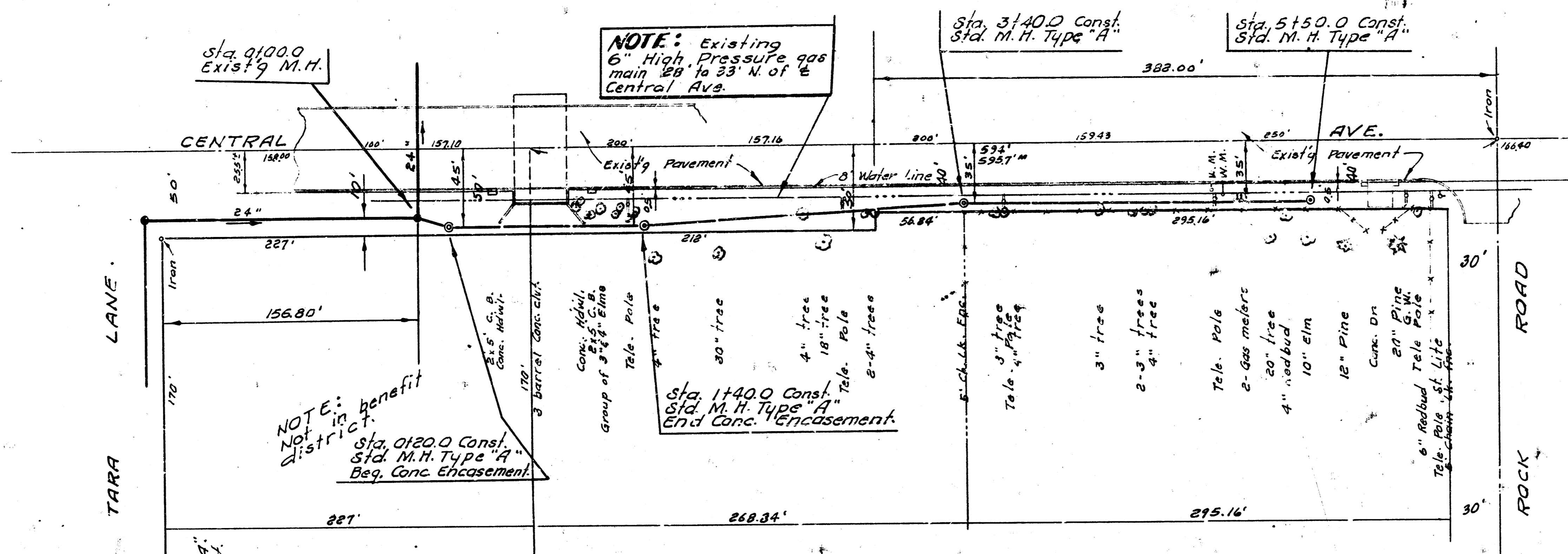
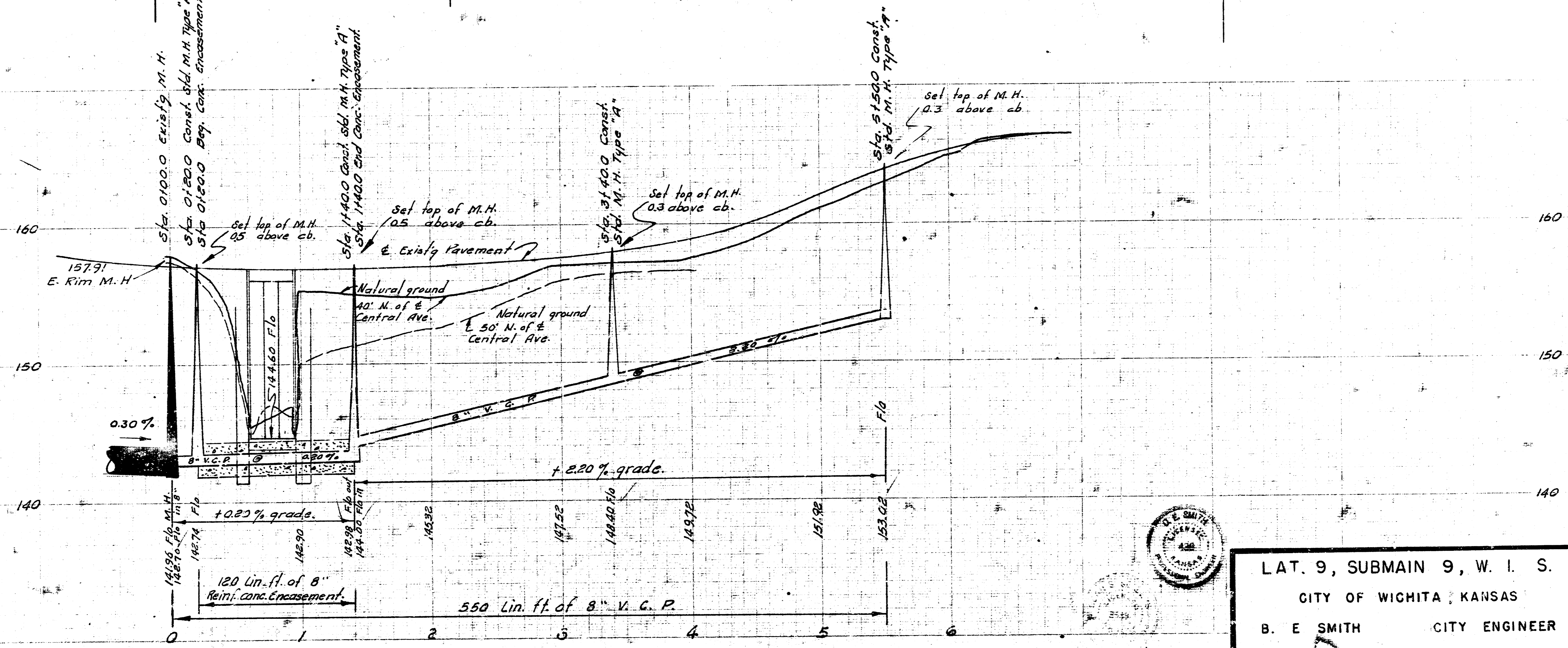


3. M. 157.91 City Std. on SE cor. conc. valve box  
 N.W. cor. Rock Rd. and Central Ave.  
 T. P. 157.91 E. Rim M. H. Sta. 0100.0

Survey by H.P. Bk AR-43  
 Checked by



Plan Scale: 1" = 40'  
 Profile Scale: 1" = 40' Vert.



LAT. 9, SUBMAIN 9, W. I. S.  
 CITY OF WICHITA, KANSAS  
 B. E. SMITH CITY ENGINEER  
 MAY 1968 PROJECT NO. C28-13