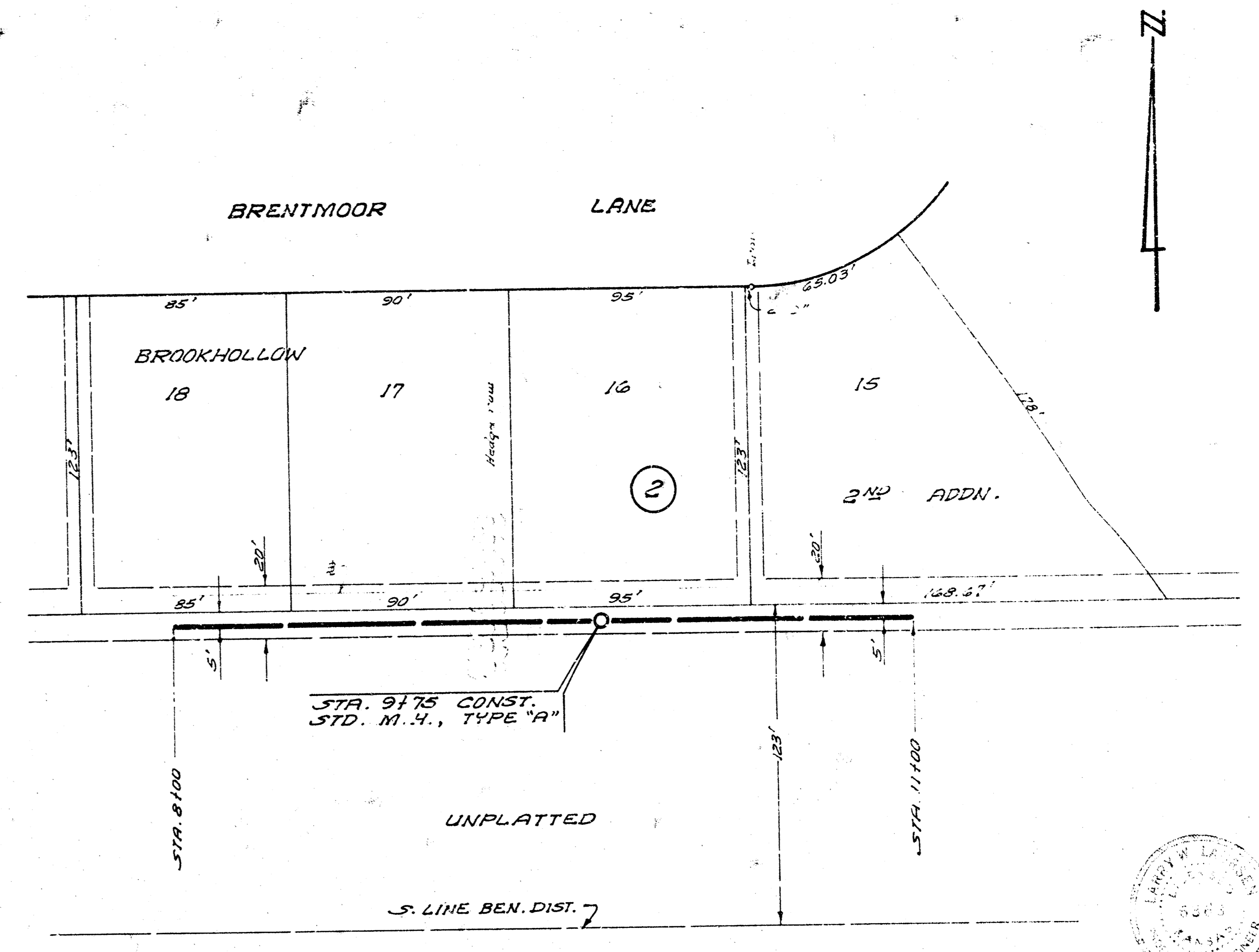
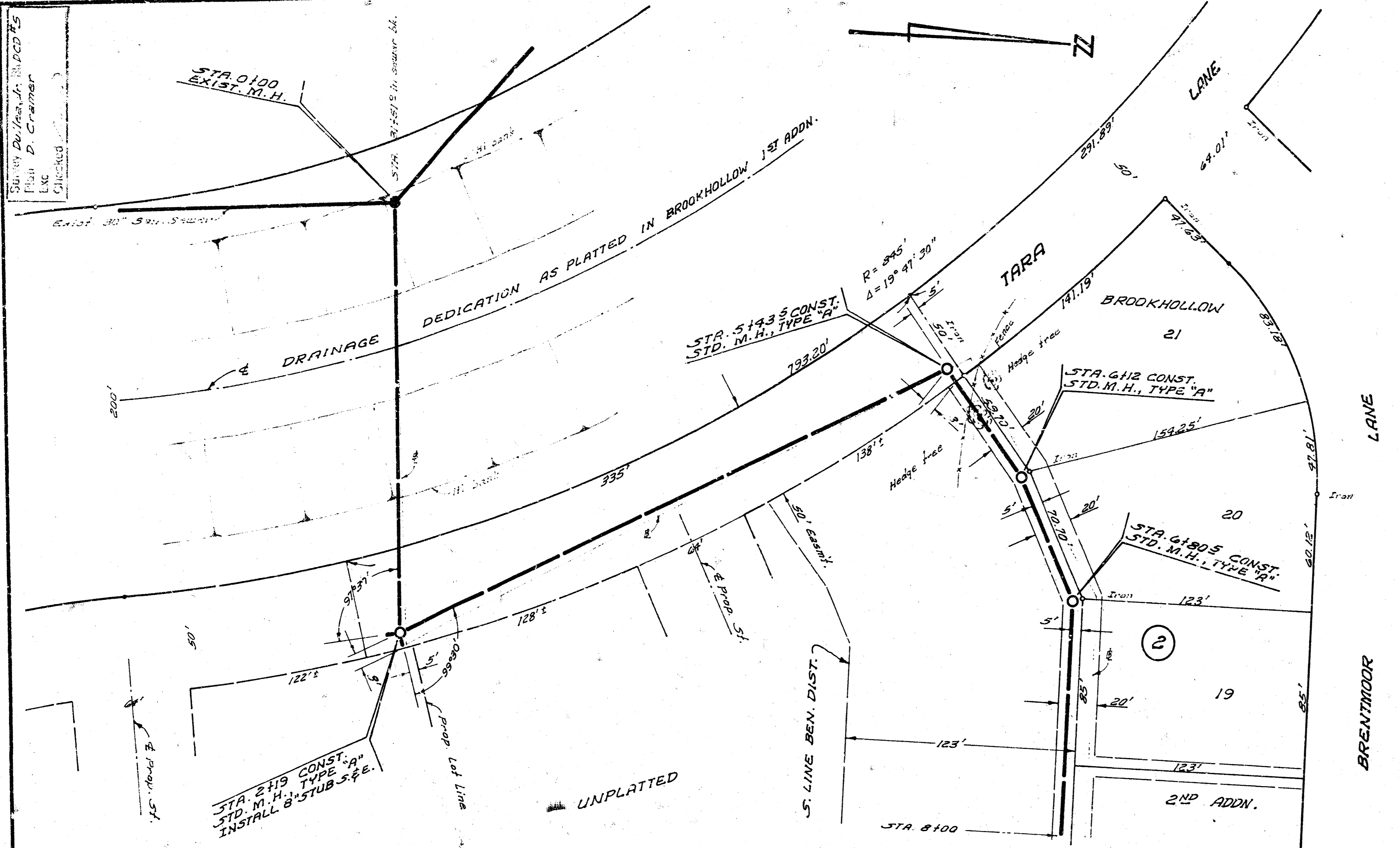


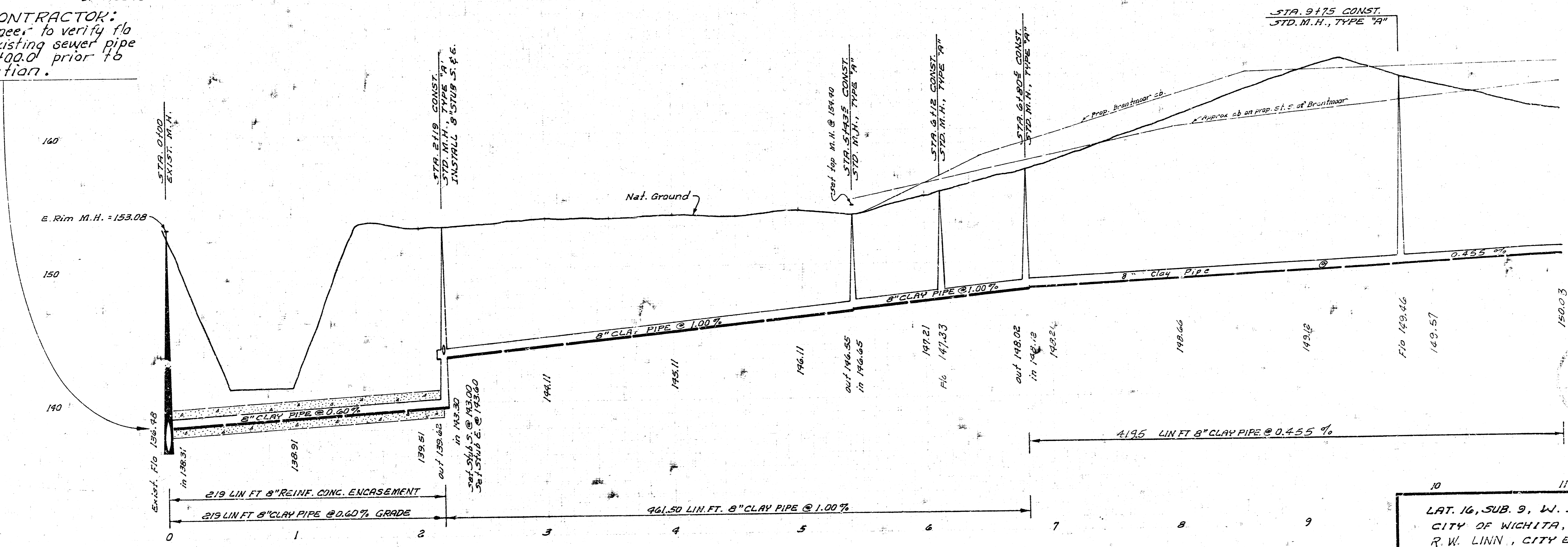
Stanley D. Linn, Inc.
 Civil Engineer
 1100 S. W. 10th St.
 Wichita, Kansas 67202



Plan Scale 1"=40'
 Profile Scale 1"=40' Hor.
 1"=4' Vert.

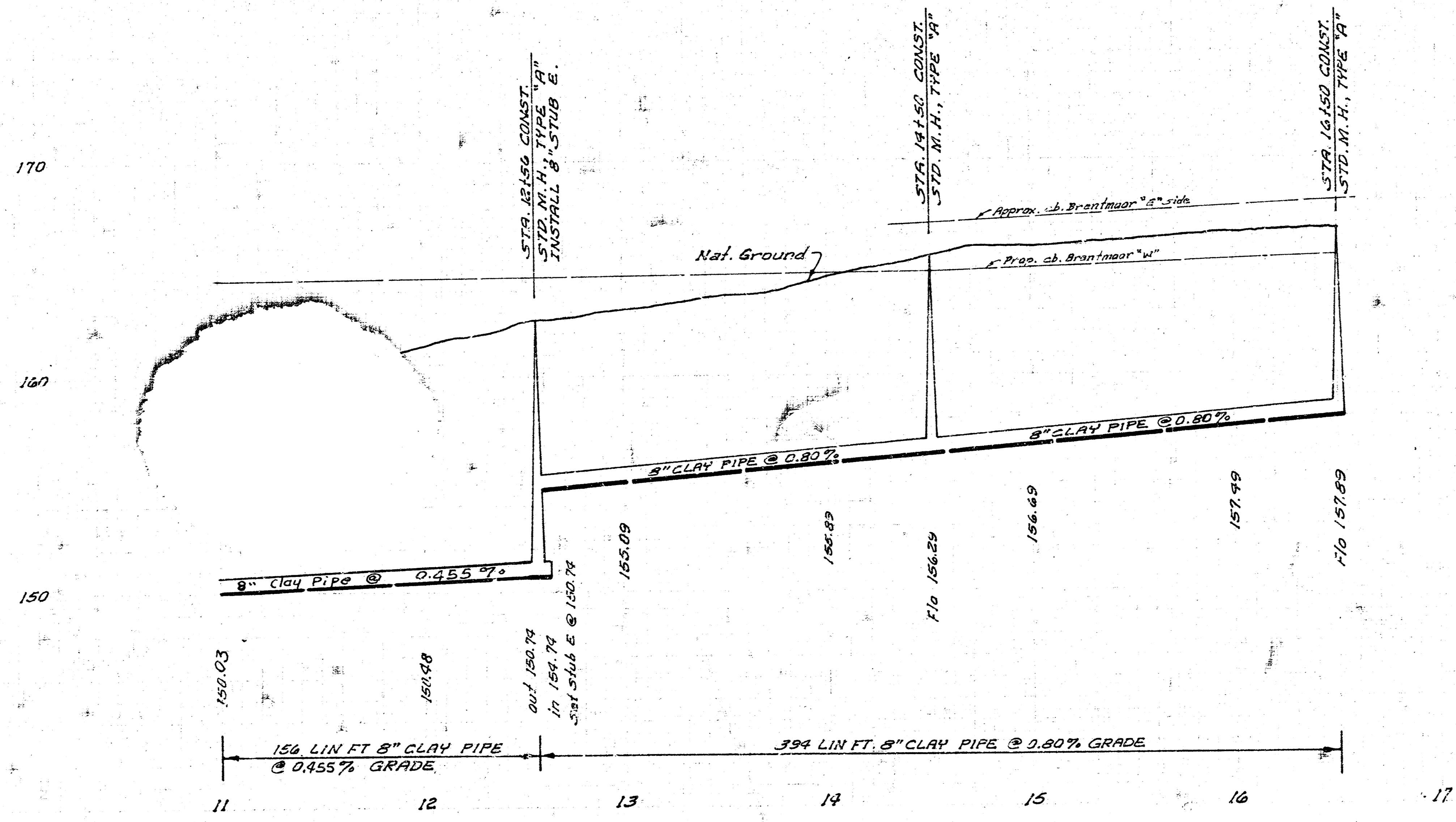
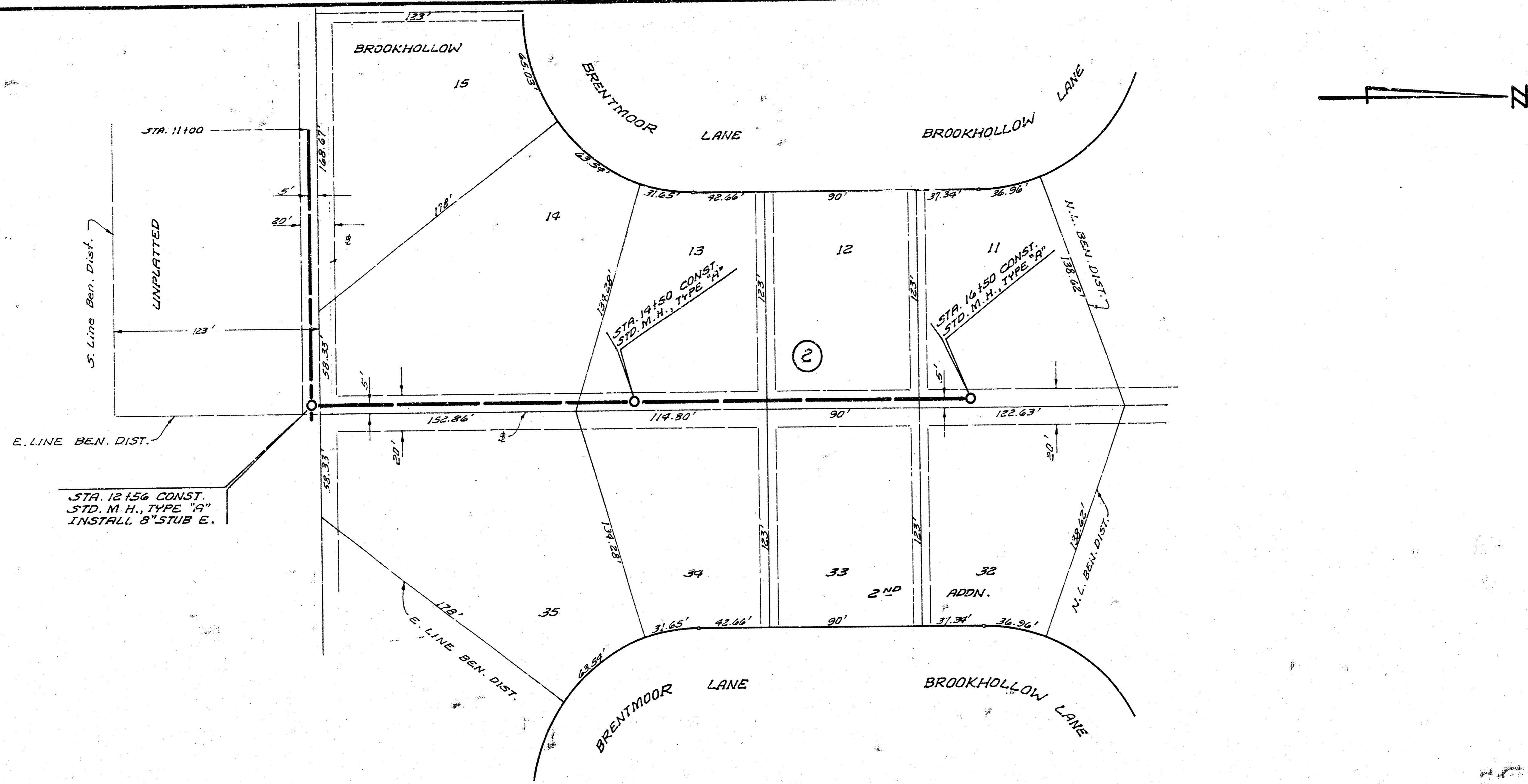
B⁺ 156.85 Brass cap top E. and N. Hubgd. R.C.B. 1st E. Rock Rd. on Central
 B⁻ 153.08 E. Rim M.H. Sta. 0100

NOTE TO CONTRACTOR:
 Field Engineer to verify flg Elev. of existing sewer pipe @ Sta. 0100.0 prior to construction.



LAT. 16, SUB. 9, W. I. S.
 CITY OF WICHITA, KANSAS
 R. W. LINN, CITY ENGINEER
 PROJ. NO. 08W L570J26
 DATE: JULY, 1972

1/2



2/2

LAT. 16, SUB. 9, W. I. S.
 PROJ. NO. DBK L570026