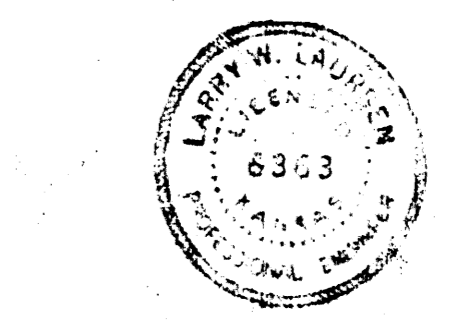
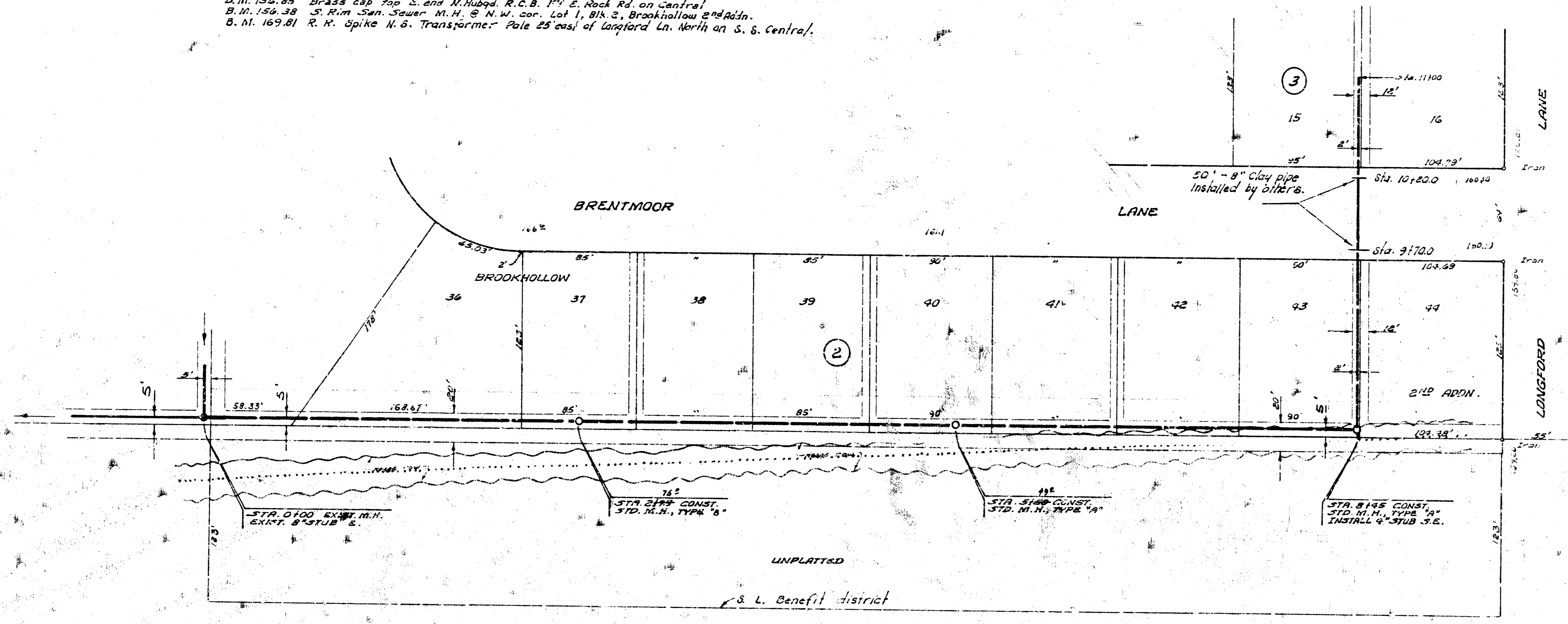
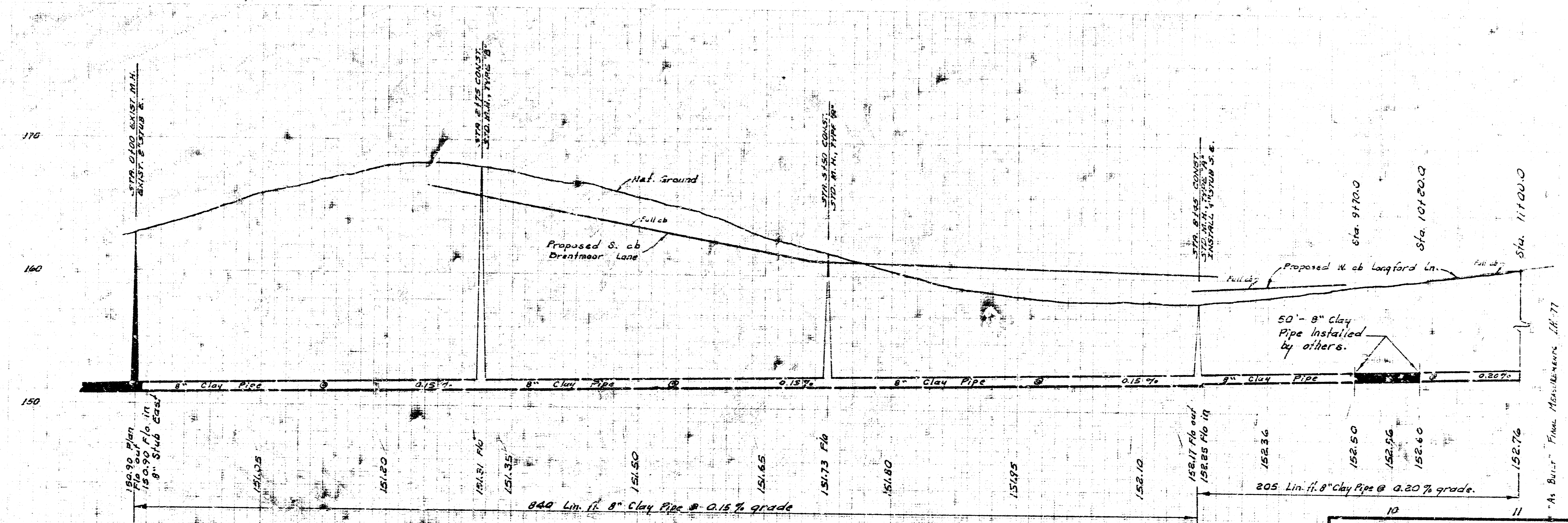


Division
D. Cramer

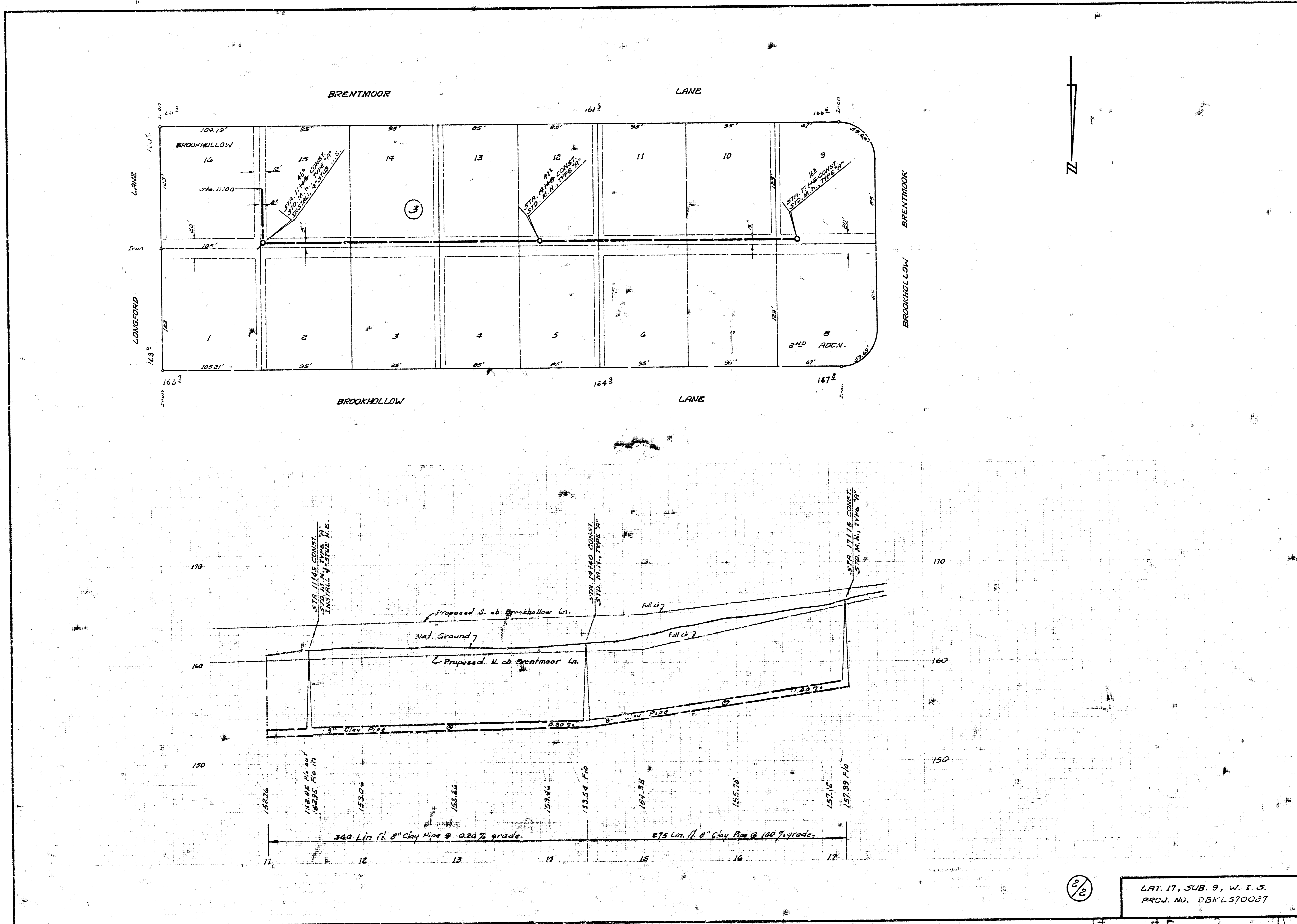
B.M. 154.85 Brass cap top E. and N. Hubgd. R.C.B. 1st E. Rock Rd. on Central
 B.M. 154.38 S. Rim - San Sauer M.H. @ N.W. cor. Lot 1, Blk 2, Brookhollow 2nd Addn.
 B.M. 169.81 R.H. Spike N.S. Transformer Pole 25' east of Longford Ln. North on S. S. Central.



Plan Scale 1"=40'
 Profile Scale 1"=4' Vert.



LAT. 17, SUB. S, W. I. S.
 CITY OF WICHITA, KANSAS
 R. W. LINN, CITY ENGINEER
 PROJ. NO. DBKLS70027
 DATE: NOV., 1912



2/2

LAY. 17, SUB. 9, W. I. S.
 PROJ. NO. DBK L570027