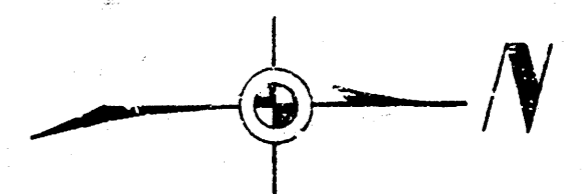
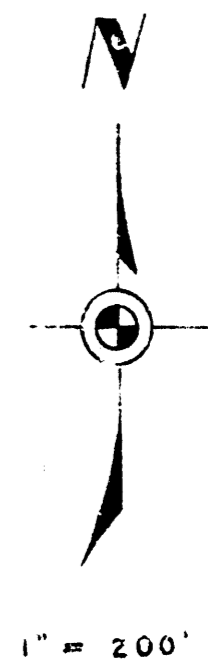
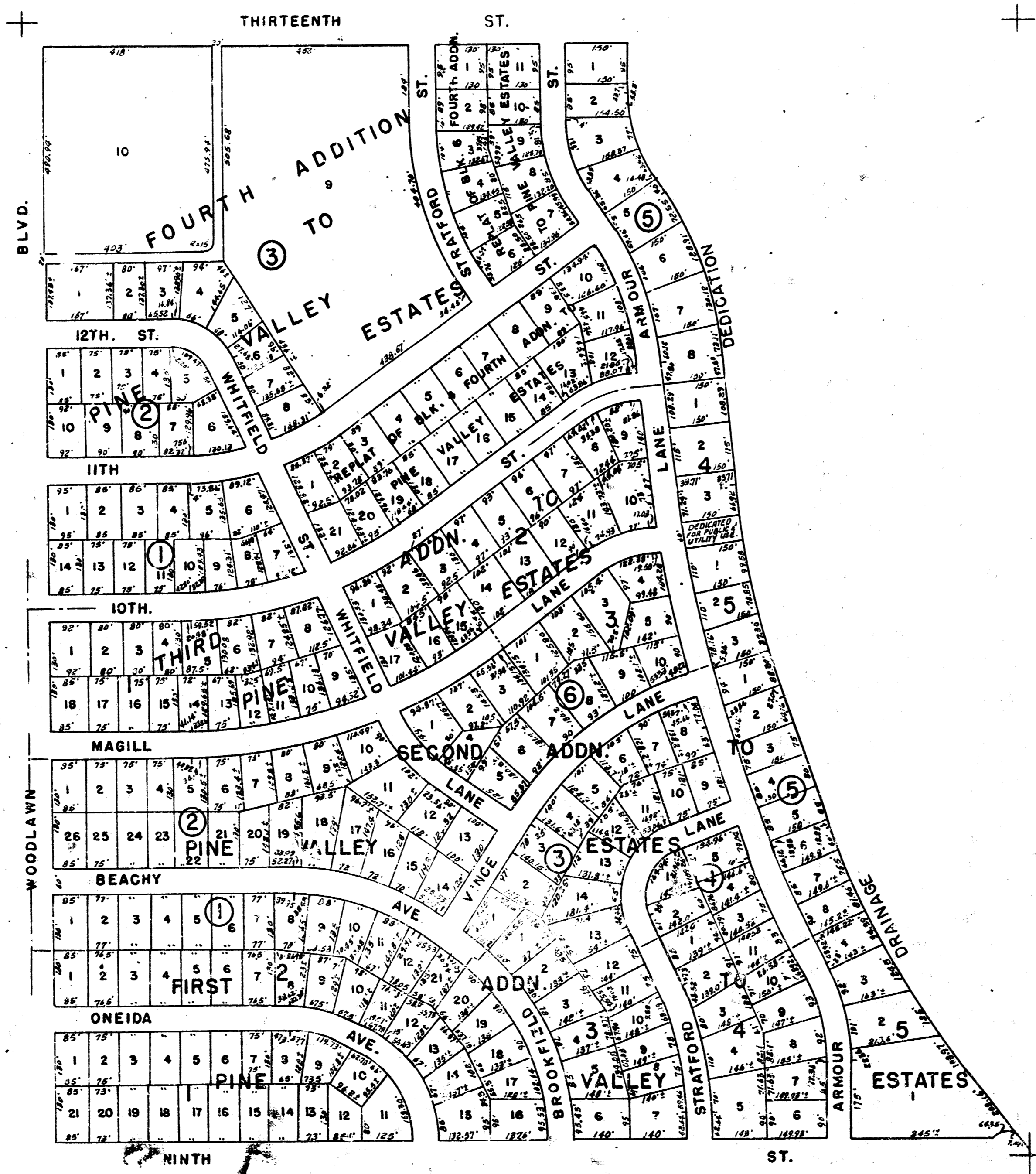
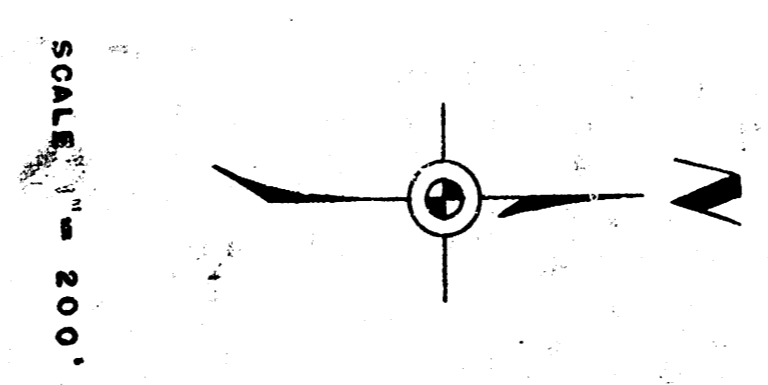
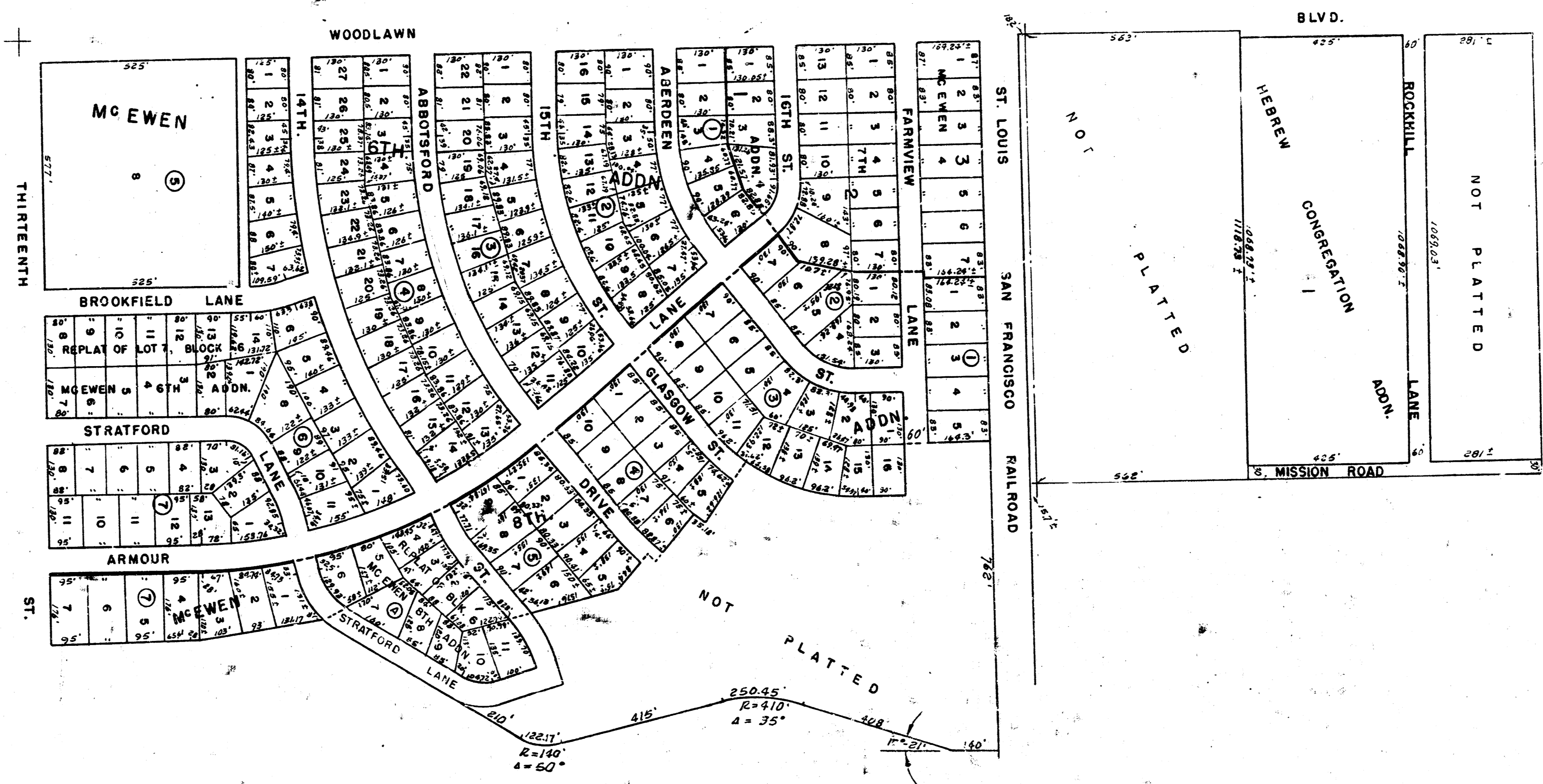


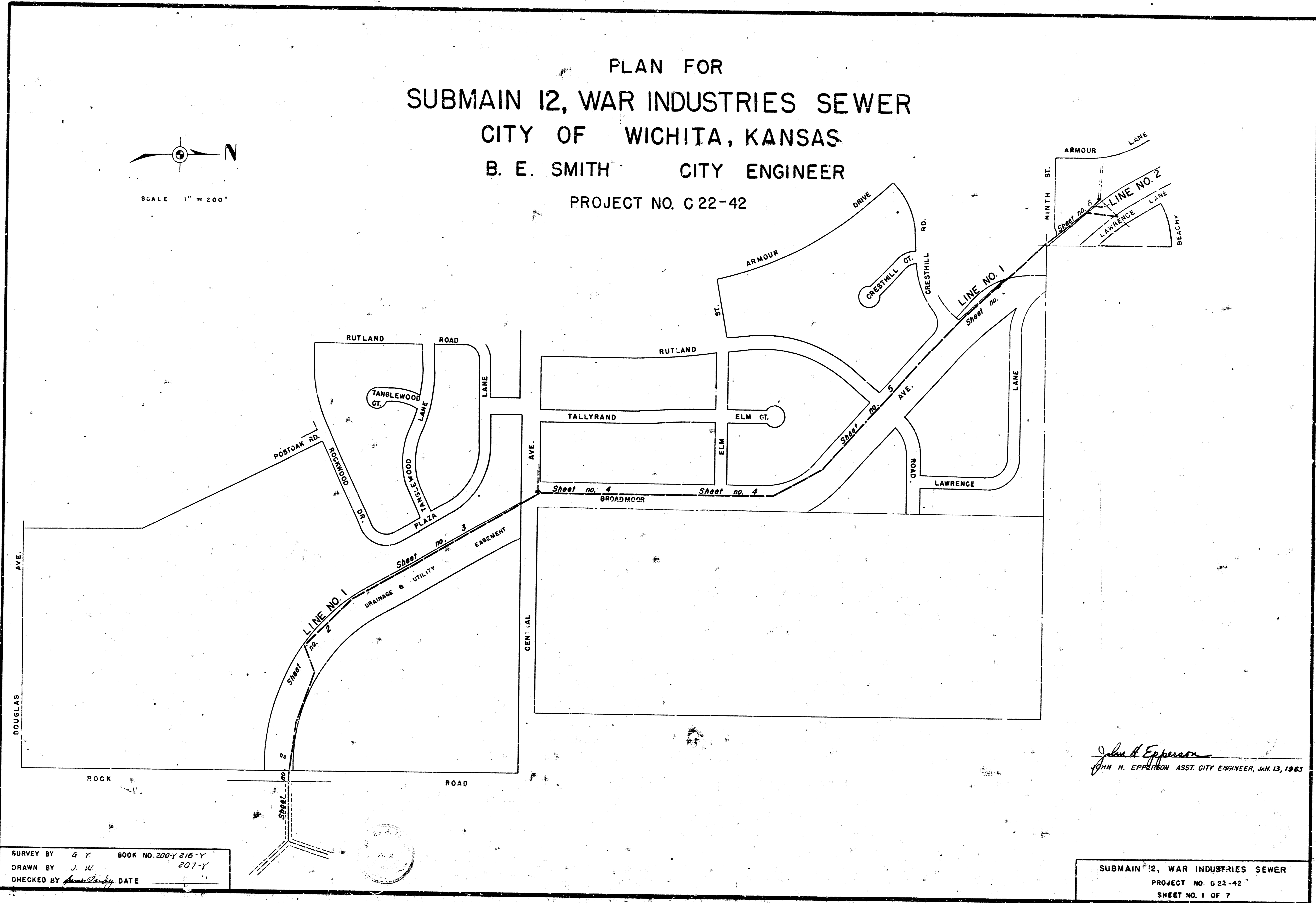
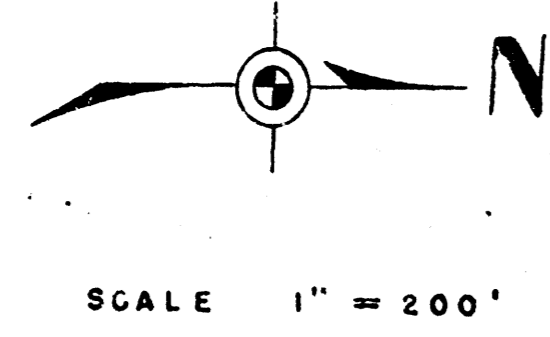
BENEFIT DISTRICT MAP  
 SUBMAIN NO. 12, WAR INDUSTRIES SEWER  
 PROJECT NO. C 22-42 SHEET 1 OF 3







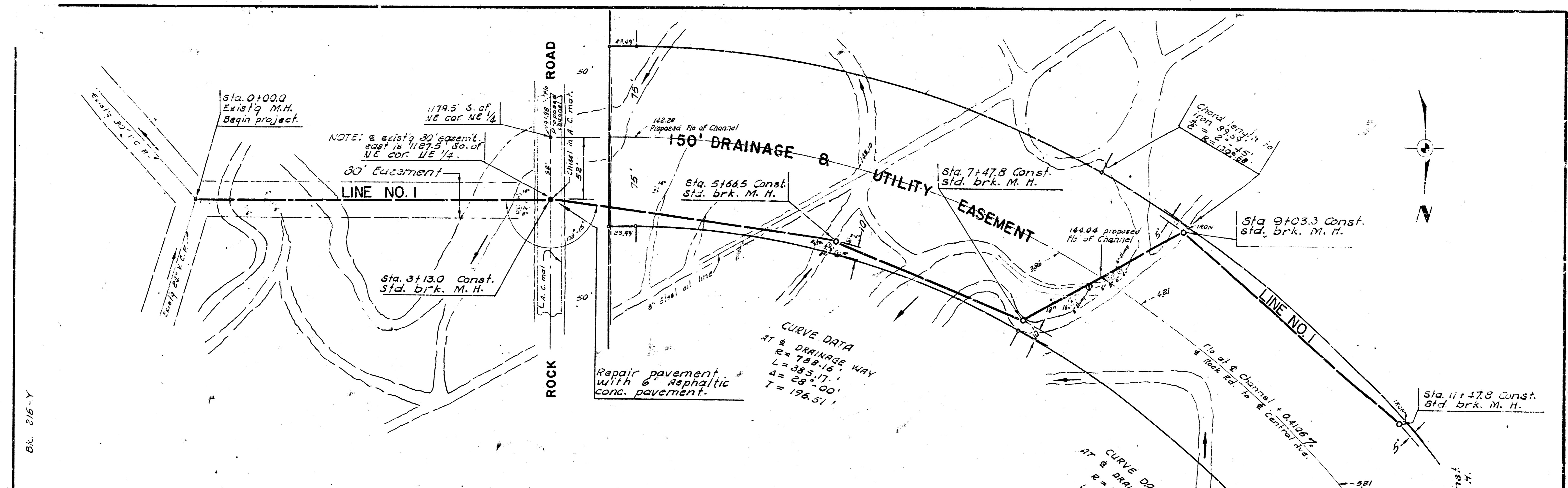
PLAN FOR  
 SUBMAIN 12, WAR INDUSTRIES SEWER  
 CITY OF WICHITA, KANSAS  
 B. E. SMITH CITY ENGINEER  
 PROJECT NO. C 22-42



*John H. Epperson*  
 JOHN H. EPPERSON ASST. CITY ENGINEER, JAN. 13, 1963

SURVEY BY G. Y. BOOK NO. 200-Y 216-Y  
 DRAWN BY J. W. 207-Y  
 CHECKED BY *[Signature]* DATE \_\_\_\_\_

SUBMAIN 12, WAR INDUSTRIES SEWER  
 PROJECT NO. C 22-42  
 SHEET NO. 1 OF 7

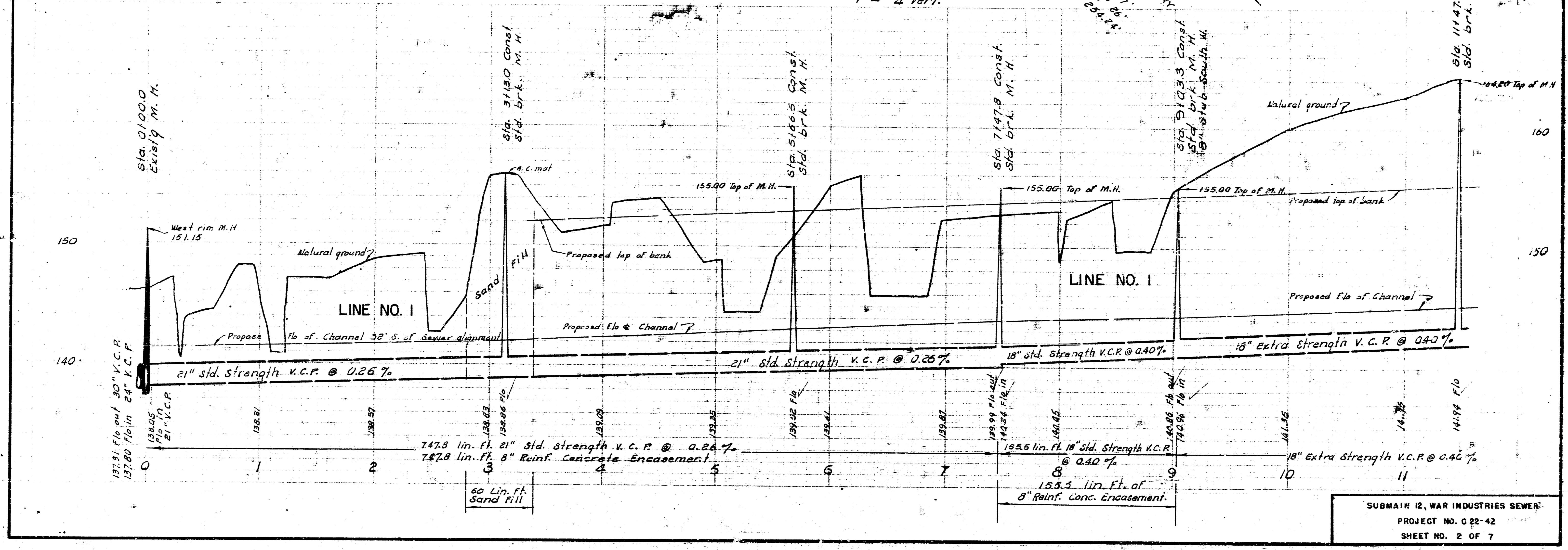


CURVE DATA  
 AT & DRAINAGE WAY  
 R = 738.16'  
 L = 385.17'  
 Δ = 28° 00'  
 T = 196.31'

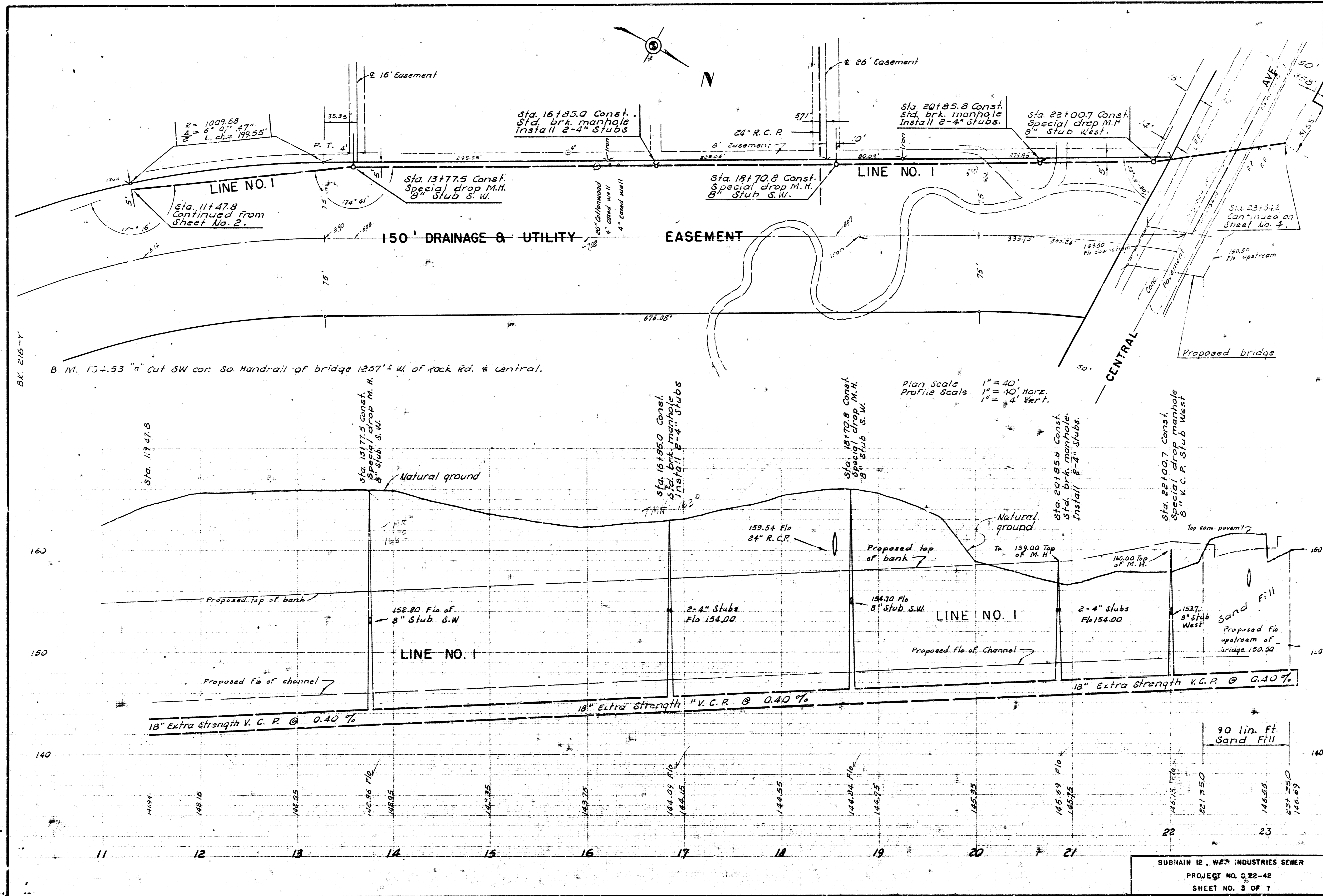
CURVE DATA  
 AT & DRAINAGE WAY  
 R = 924.85'  
 L = 404.47'  
 Δ = 30° 26'  
 T = 254.44'

B. M. 156.00 R. R. Spike on piling NE cor. Br. on Rock Road betw. Central & Douglas.

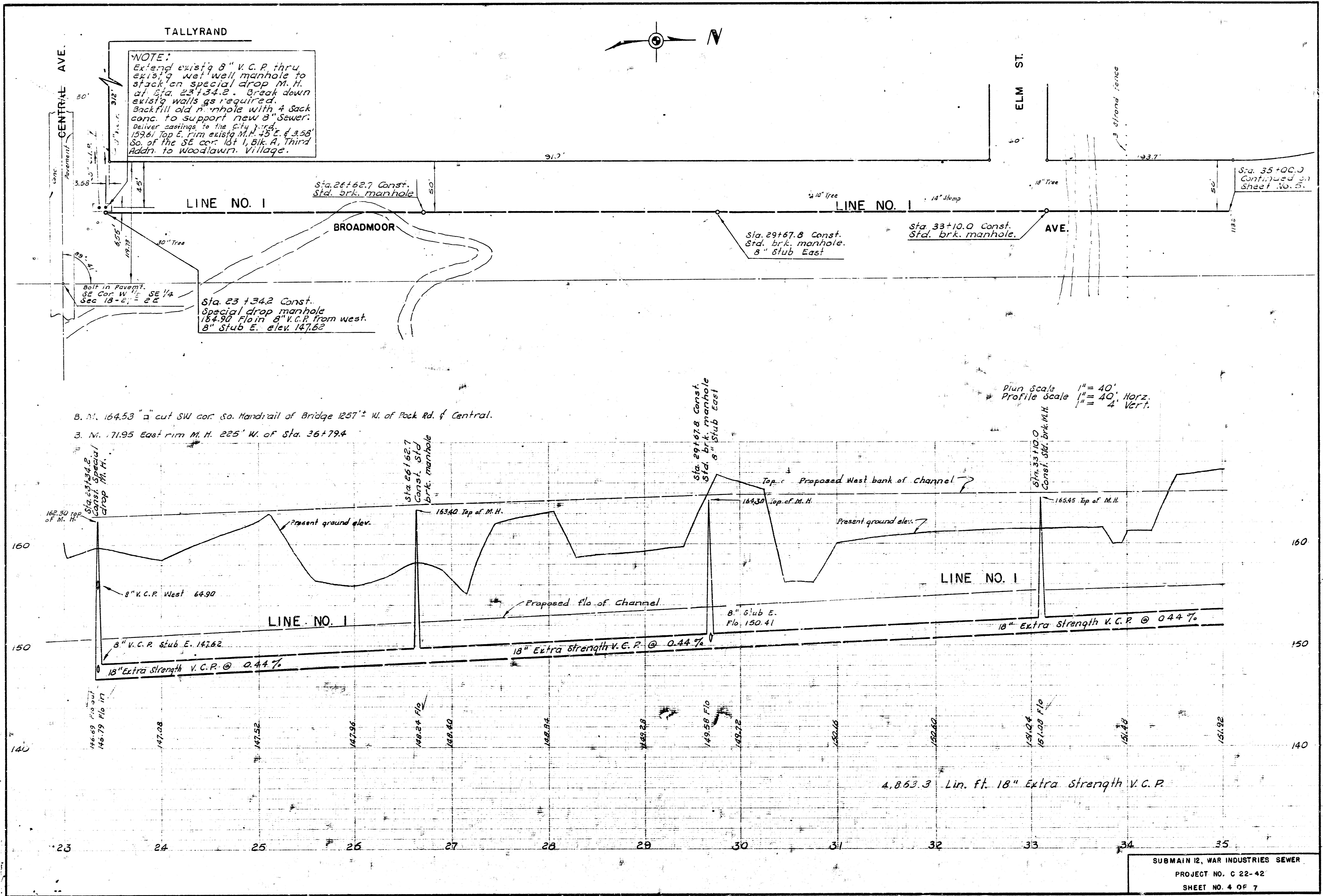
Plan Scale 1" = 40' Horiz.  
 Profile Scale 1" = 40' Horiz.  
 1" = 4' Vert.

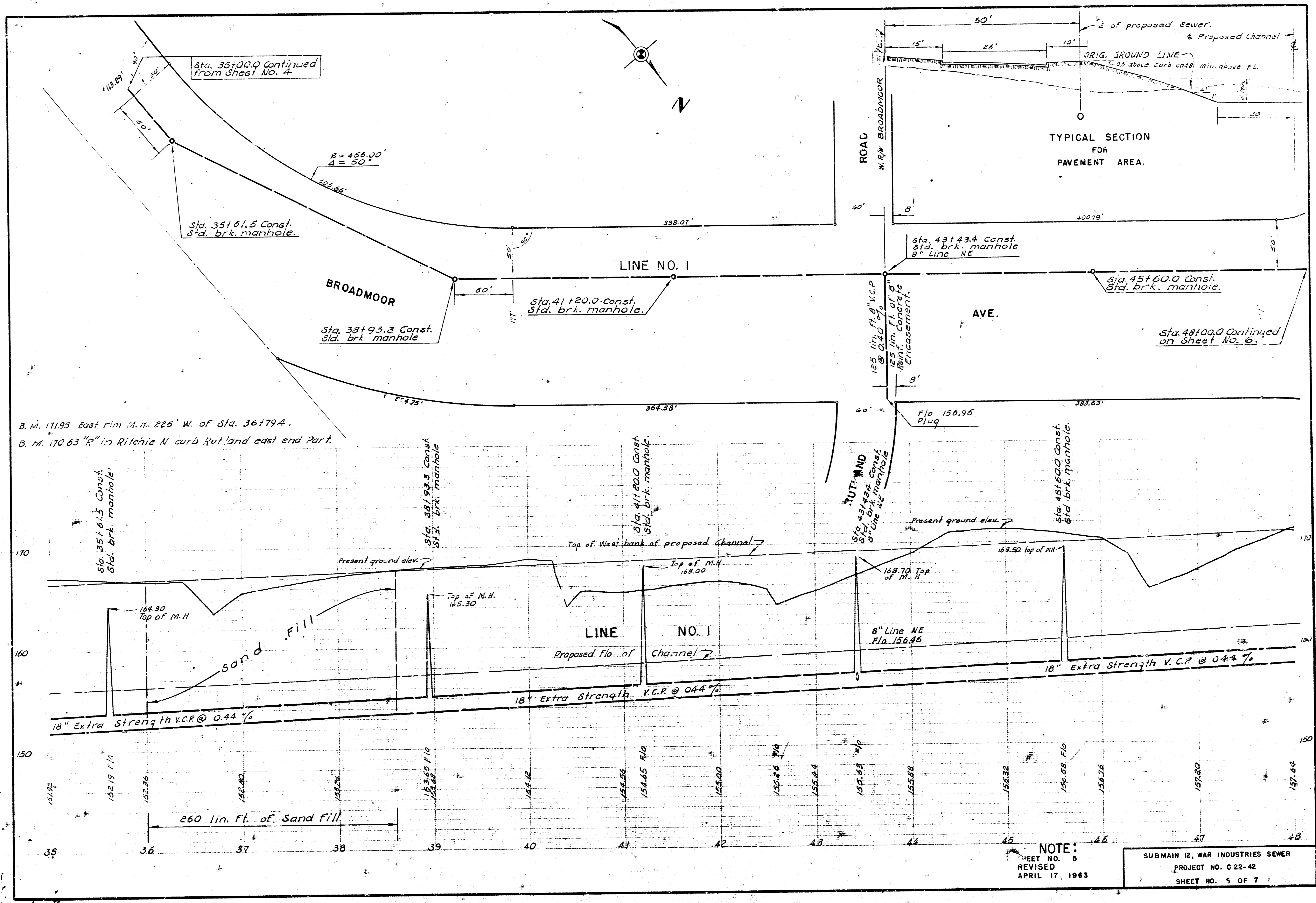


SUBMAIN 12, WAR INDUSTRIES SEWER  
 PROJECT NO. C 22-42  
 SHEET NO. 2 OF 7



SUBMAIN 12, W. INDUSTRIES SEWER  
 PROJECT NO. G 22-42  
 SHEET NO. 3 OF 7

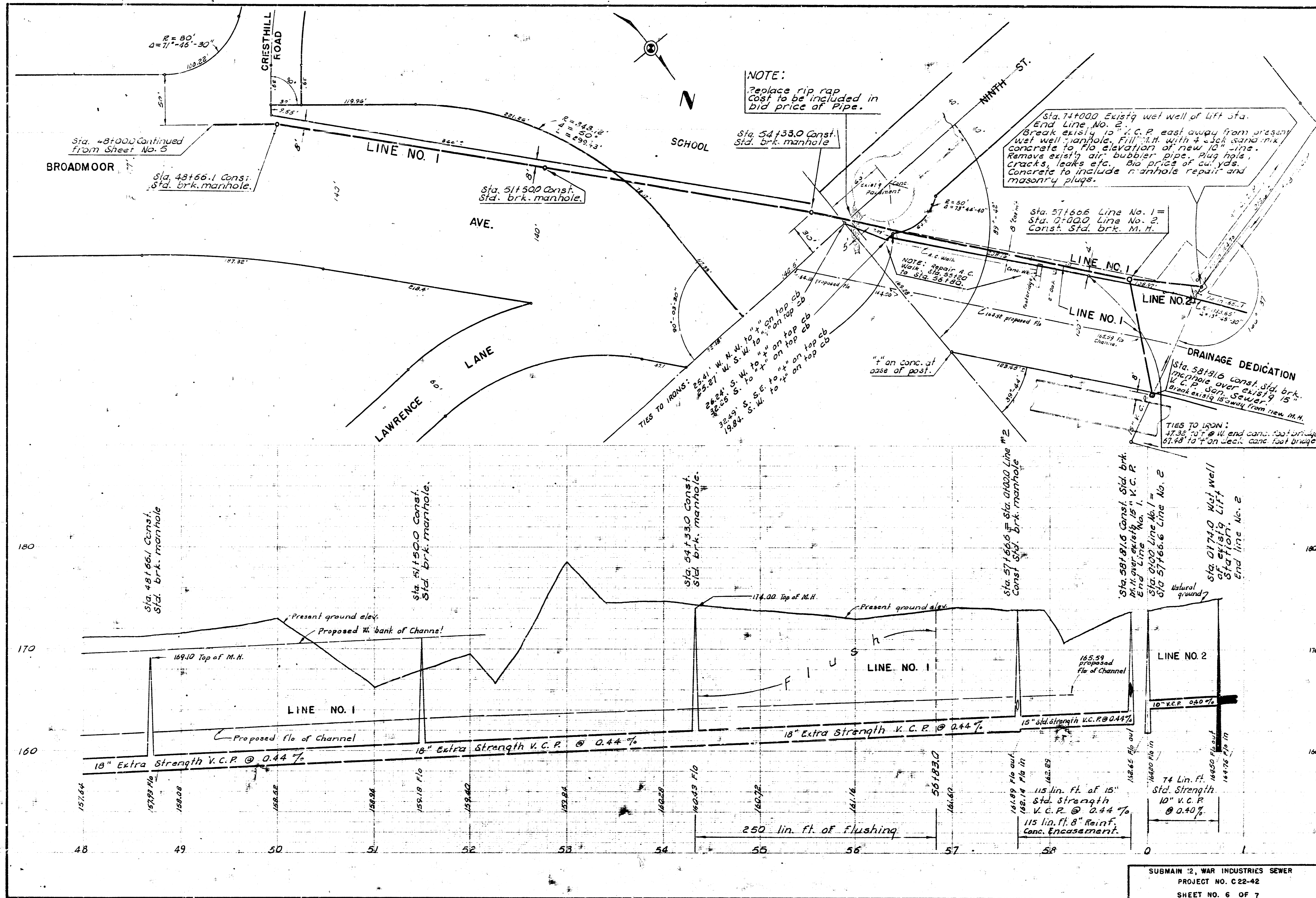




B. M. 171.95 East rim M. H. 225' W. of Sta. 36179.4.  
 B. M. 170.63 "P" in Ritchie N. curb cut and east end Part.

NOTE:  
 SHEET NO. 5  
 REVISED  
 APRIL 17, 1963

SUBMAIN 12, WAR INDUSTRIES SEWER  
 PROJECT NO. C 22-42  
 SHEET NO. 5 OF 7



NOTE:  
 Replace rip rap  
 cost to be included in  
 bid price of Pipe.

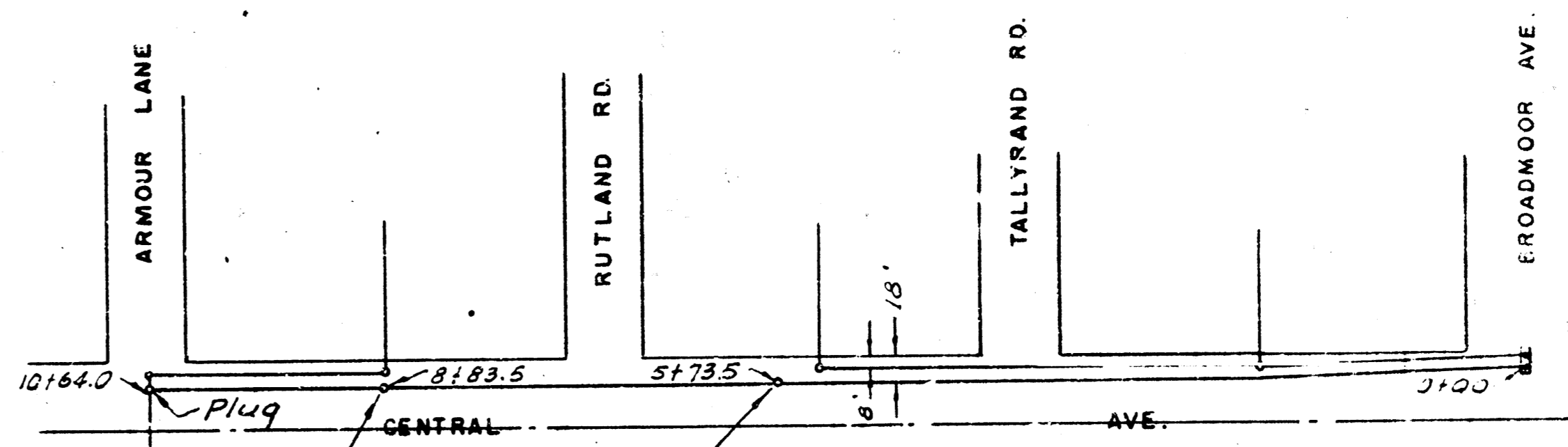
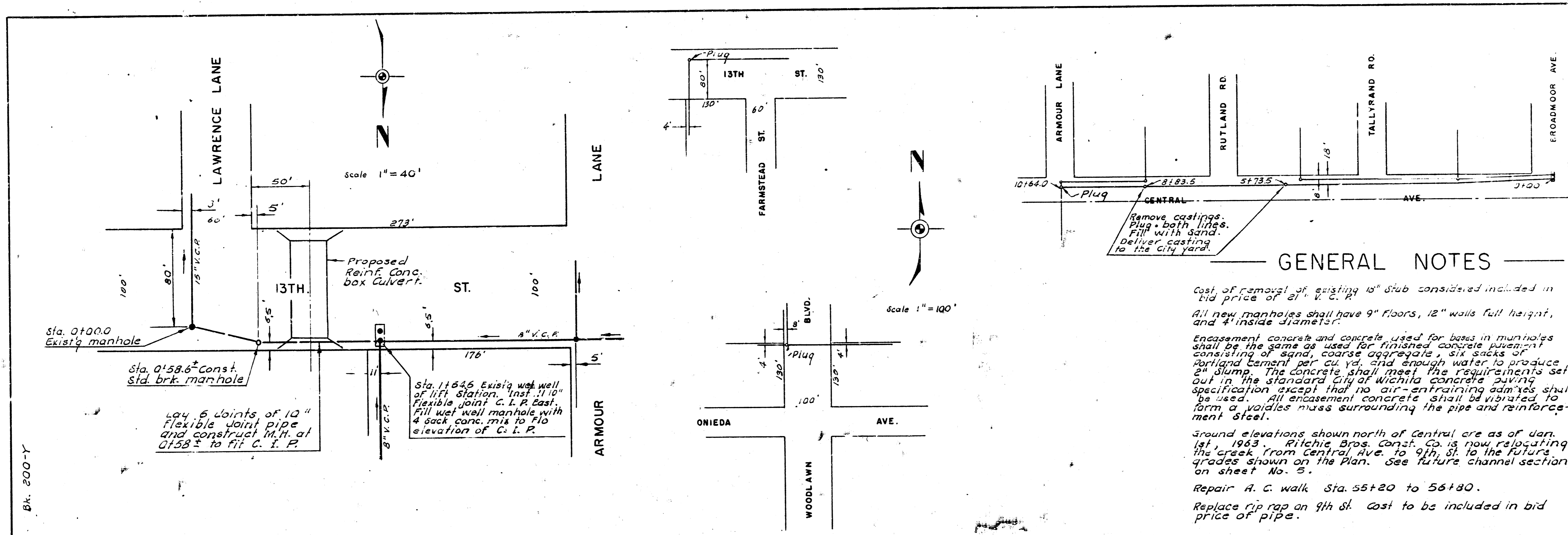
Sta. 74+000 Existing wet well of lift sta.  
 End Line No. 2. C.P. east away from present  
 wet well manhole. Fill with 4 inch sand, m.k.,  
 concrete to floor elevation of new 10" line.  
 Remove existing air bubbler pipe. Plug hole.  
 Cracks, leaks etc. Bid price of culverts.  
 Concrete to include manhole repair and  
 masonry plugs.

Sta. 57150.6 Line No. 1 =  
 Sta. 57000 Line No. 2.  
 Const. Std. brk. M.H.

DRAINAGE DEDICATION  
 Sta. 58181.6 Const. Std. brk.  
 Manhole over existing 15"  
 V.C.P. San. Sewer.  
 Break existing 15" away from new M.H.

Sta. 58181.6 Const. Std. brk.  
 Manhole over existing 15" V.C.P.  
 End Line No. 1 =  
 Sta. 57000 Line No. 2  
 Sta. 57166.6 Line No. 2  
 Natural ground

SUBMAIN '2, WAR INDUSTRIES SEWER  
 PROJECT NO. C 22-42  
 SHEET NO. 6 OF 7



**GENERAL NOTES**

Cost of removal of existing 10" stub considered included in bid price of 2" V.C.P.

All new manholes shall have 9" floors, 12" walls full height, and 4' inside diameters.

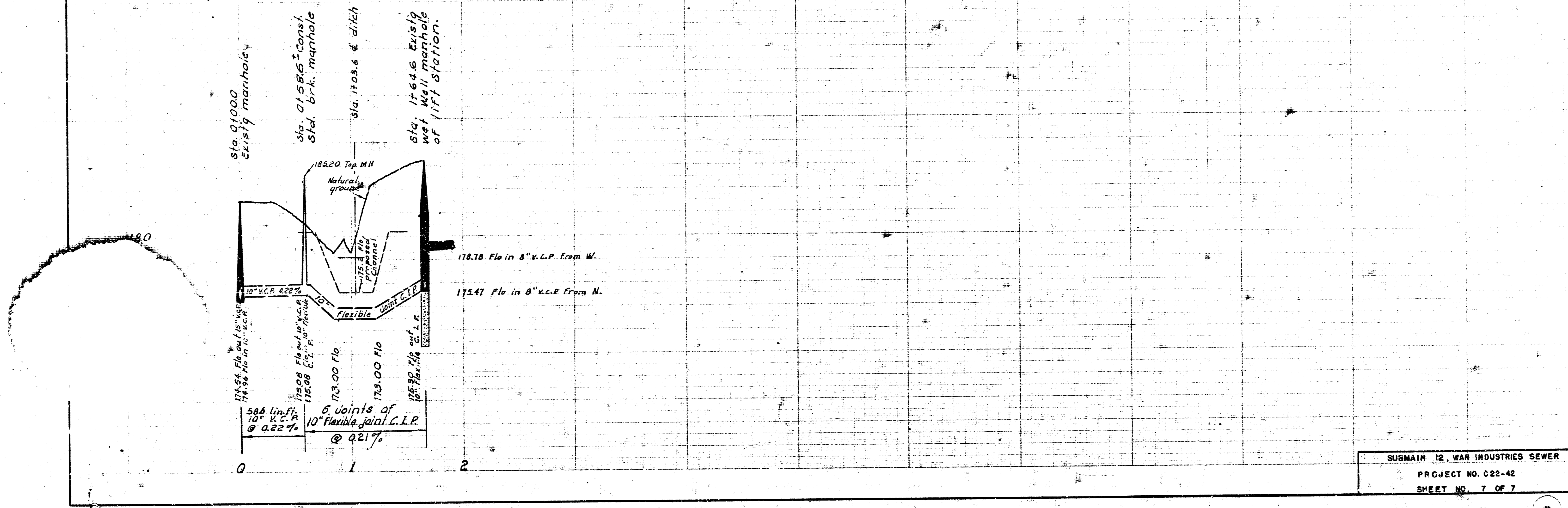
Encasement concrete and concrete used for bases in manholes shall be the same as used for finished concrete pavement consisting of sand, coarse aggregate, six sacks of Portland cement per cu. yd. and enough water to produce 2" slump. The concrete shall meet the requirements set out in the standard City of Wichita concrete paving specification except that no air-entraining admixes shall be used. All encasement concrete shall be vibrated to form a voidless mass surrounding the pipe and reinforcement steel.

Ground elevations shown north of Central are as of Jan. 1st, 1963. Ritchie Bros. Const. Co. is now relocating the creek from Central Ave. to 9th St. to the future grades shown on the Plan. See future channel section on sheet No. 5.

Repair A.C. walk Sta. 55+20 to 56+80.

Replace rip rap on 9th St. Cost to be included in bid price of pipe.

B. M. 187.55 "a" Sq. cut on SW cor. Top NW Post of Conc. bridge E. of Armour on 13th St.



SUBMAIN 12, WAR INDUSTRIES SEWER  
PROJECT NO. C22-42  
SHEET NO. 7 OF 7