

Survey by D.L.K., Bk. D.L.K. # 6
Plotted by D.L.K., Bk. D.L.K. # 6
Checked by

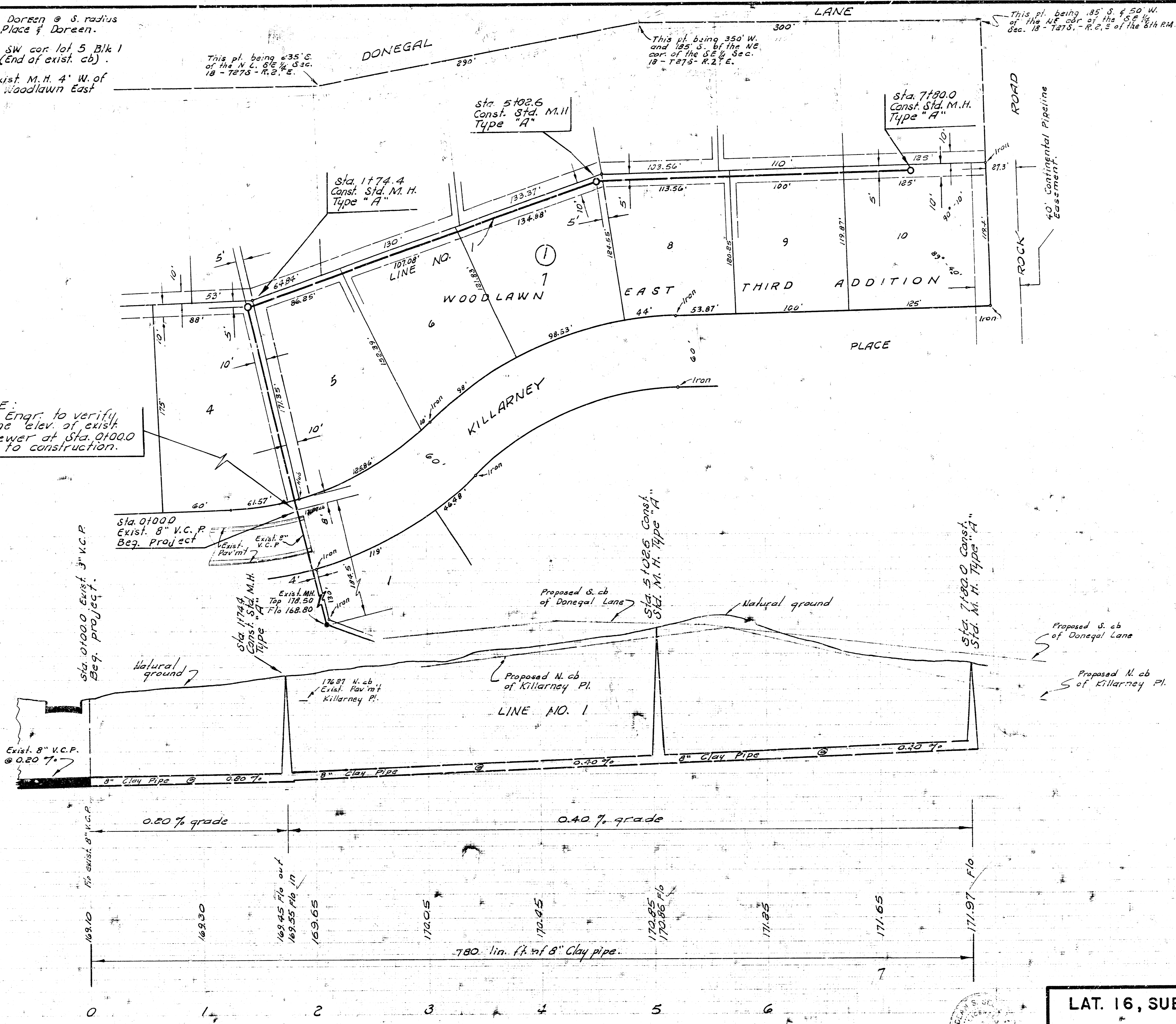
B. M. 170.03 0" cut top E. cb Doreen @ S. radius on S.E. cor Killarney Place & Doreen.
 B. M. 173.27 Top N. cb S. of SW cor. lot 5 Blk 1 Woodlawn East 3rd Addn. (End of exist. cb).
 T. B. M. 178.58 Top E. ring exist. M.H. 4' W. of S.W. cor. Lot 1 Blk. 2 Woodlawn East 3rd. Addn.

This pt. being 235' E. of the N.E. 1/4 Sec. 18 - T27S - R.2E.

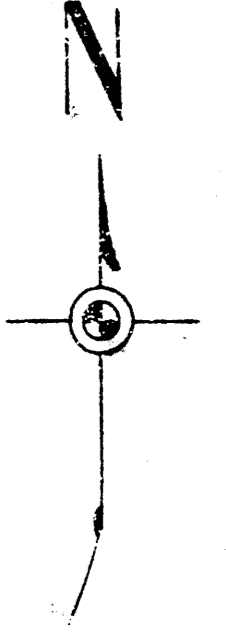
This pt. being 350' W. and 125' S. of the NE. cor. of the SE 1/4 Sec. 18 - T27S - R.2E.

This pt. being 185' S. & 50' W. of the NE. cor. of the SE 1/4 Sec. 18 - T27S - R.2E of the 8th P.M.

NOTE:
Field Engr. to verify fio line elev. of exist. San. sewer at Sta. 01000 prior to construction.



Plan Scale 1" = 40'
 Profile Scale 1" = 40' Horiz.
 1" = 4' Vert.



LAT. 16, SUBMAIN 12, W. I. S.
 CITY OF WICHITA, KANSAS
 B. E. SMITH CITY ENGINEER
 FEB. 1971 PROJECT NO. C 29-24

