

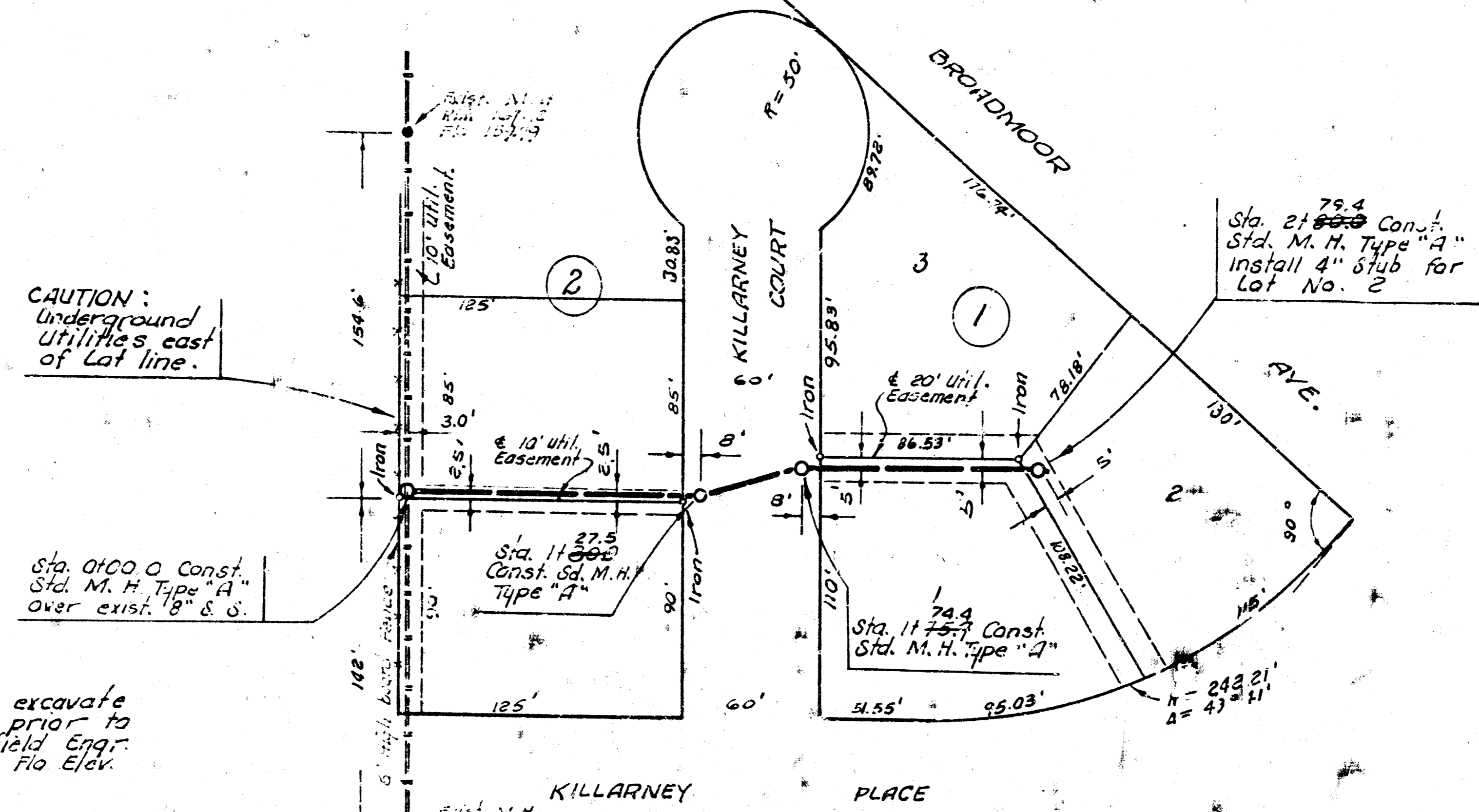
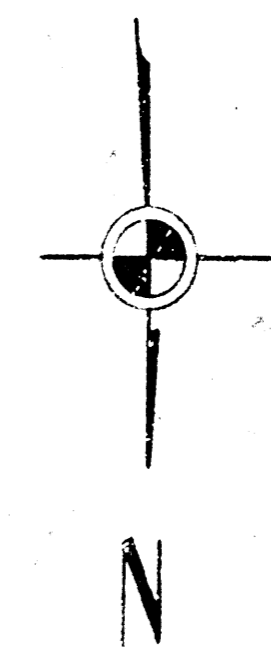
Survey by C.L.G.
Plan by U.R.W.
Bk. No. 66 57

B. M. #1 171.63 "N" in Mueller on Fire Hydrant
NE Cor. Intersection of Killarney Place
and Lawrence Ln. (Est. by I. H.)
B. M. #2 169.75 "N" S. Rim M.H. 122.0' east of
E. L. Lawrence Ln 4 82' South of N. L.
Killarney Place.

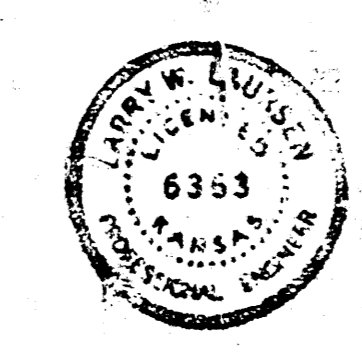
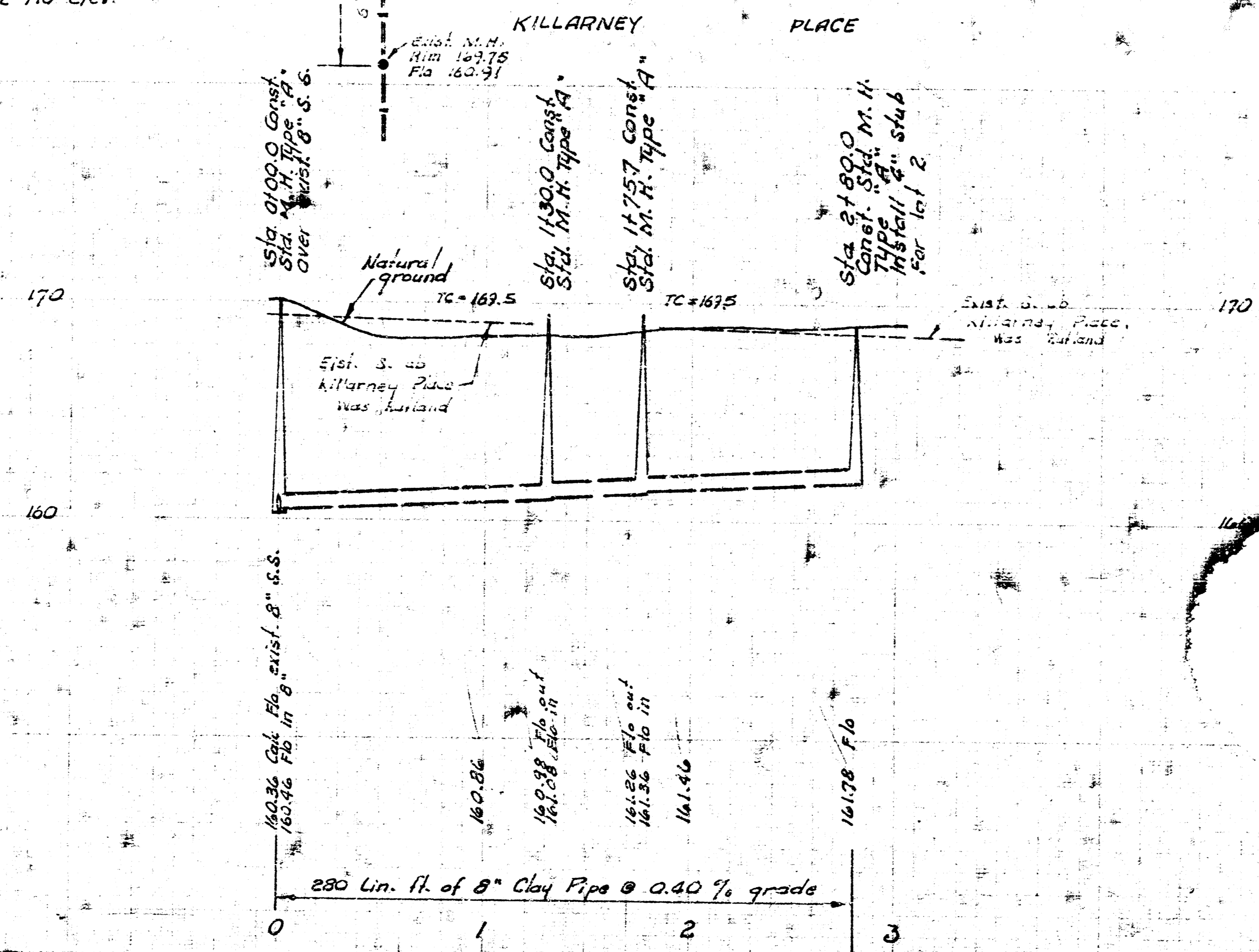
G. W. Mc CLELLAN
2ND. ADDITION

Plan Scale 1" = 40'
Profile Scale 1" = 40' Horiz.
1" = 4' Vert.

NOTE:
Benefit district
includes all lots
in block 1.



NOTE:
Contractor is to excavate
at Sta. 0100.0 prior to
construction so field Eng.
can verify Pipe Rio Elev.



LAT. 20, MAIN 12, W. I. S.
CITY OF WICHITA, KANSAS
R. W. LINN — CITY ENGINEER
MAY 1914 PROJECT NO. DBK'LS74009

FINAL MEASUREMENTS
FROM 7-27