

CONSTRUCTION PLANS FOR LATERAL 15, MAIN 13, WAR INDUSTRIES SEWER

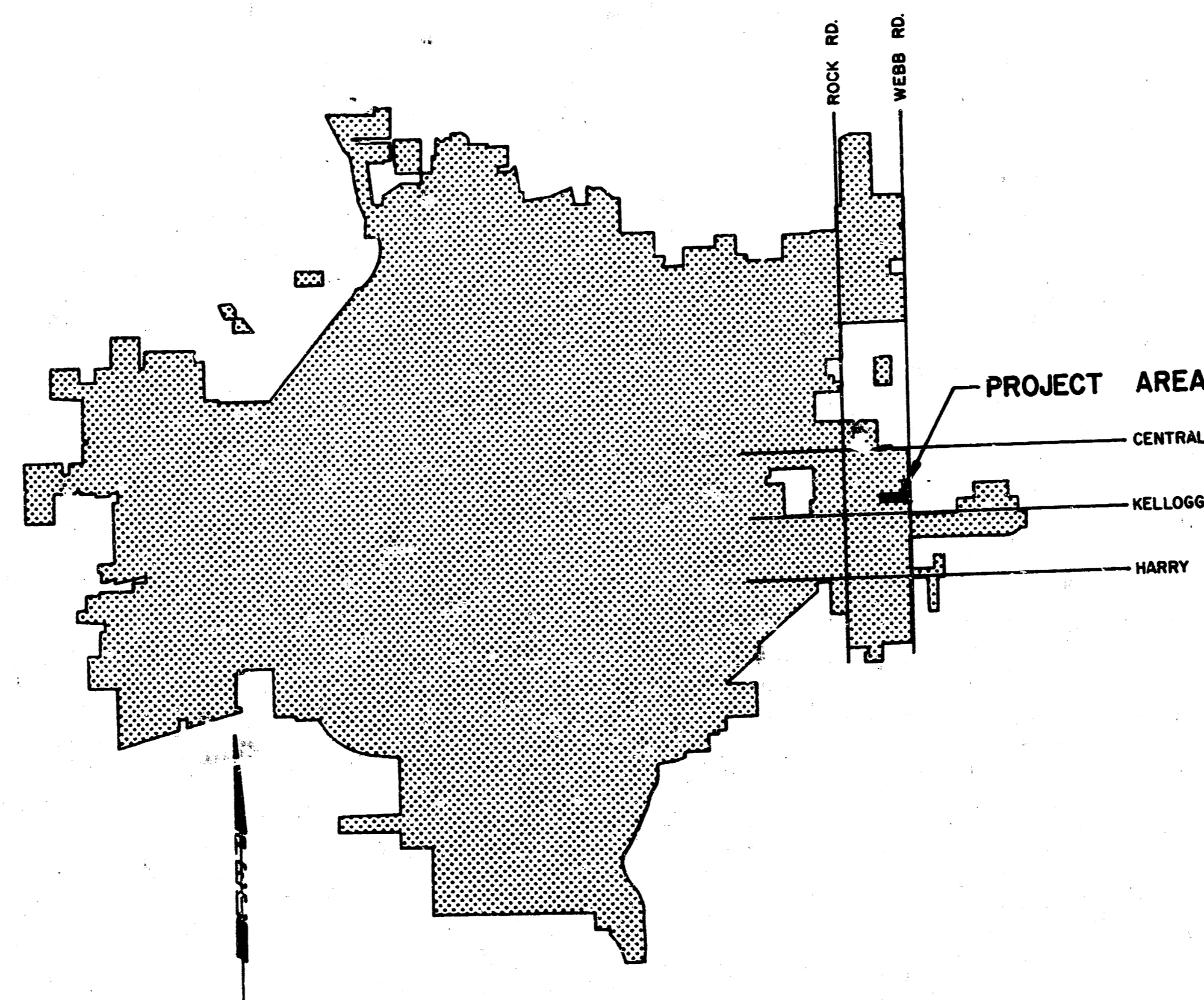
TO SERVE
MAXWELL ADDITION AND MAXWELL 2ND ADDITION

THE CITY OF WICHITA,
SEDGWICK COUNTY, KANSAS

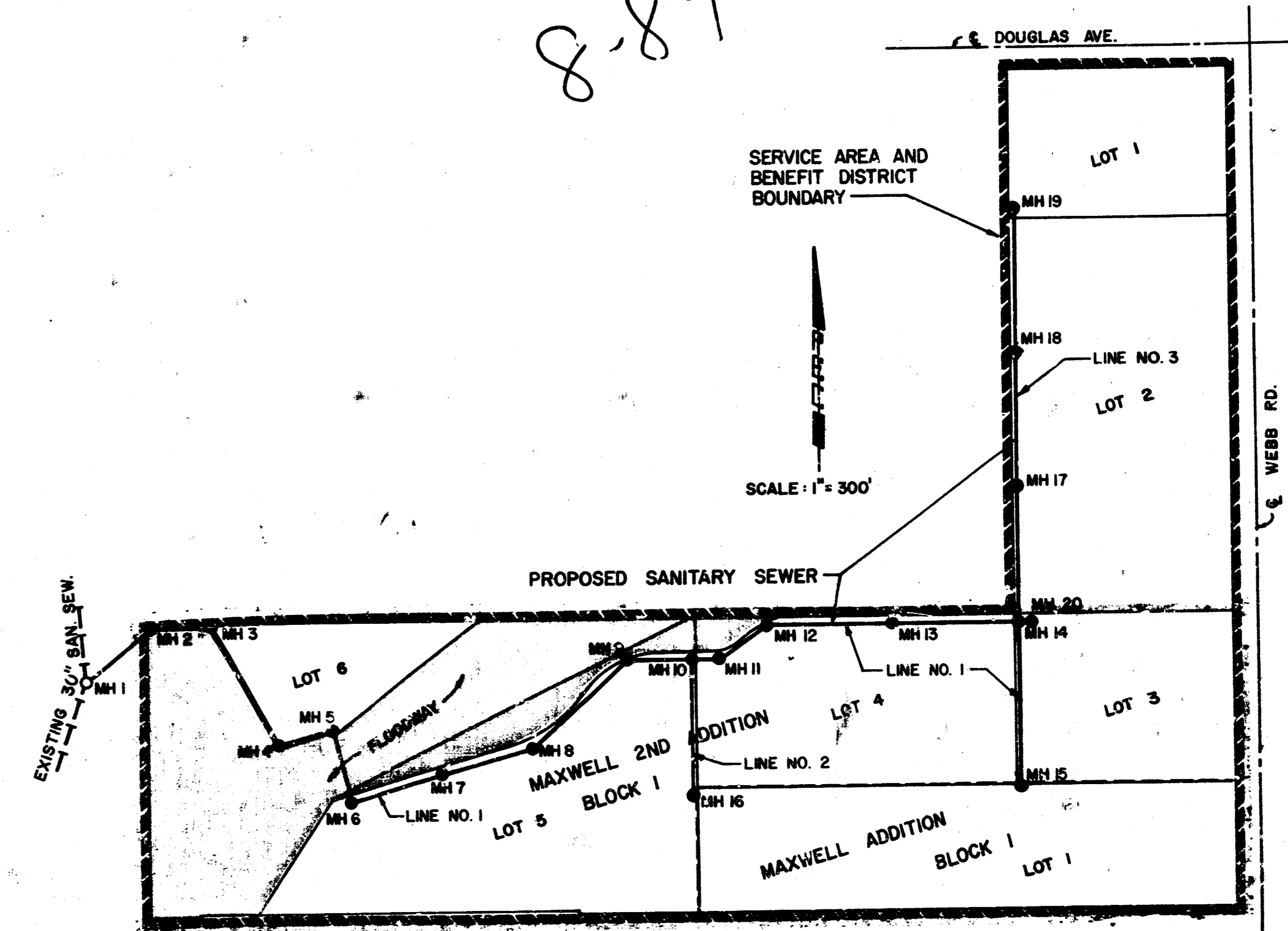
*As Built
J.L.L.
8-84*

INDEX OF SHEETS

SHEET NO. 1	TITLE SHEET
SHEET NO. 2	GENERAL NOTES AND DETAILS
SHEET NO. 3	EASEMENT GRADING
SHEET NO. 4-8	PLAN/PROFILE



LOCATION MAP

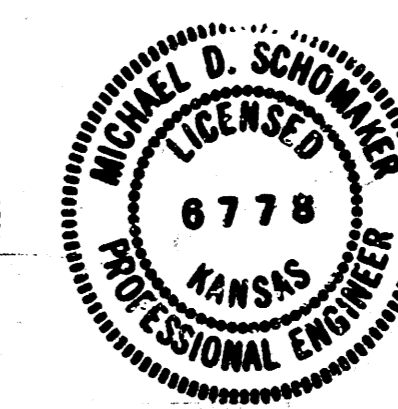


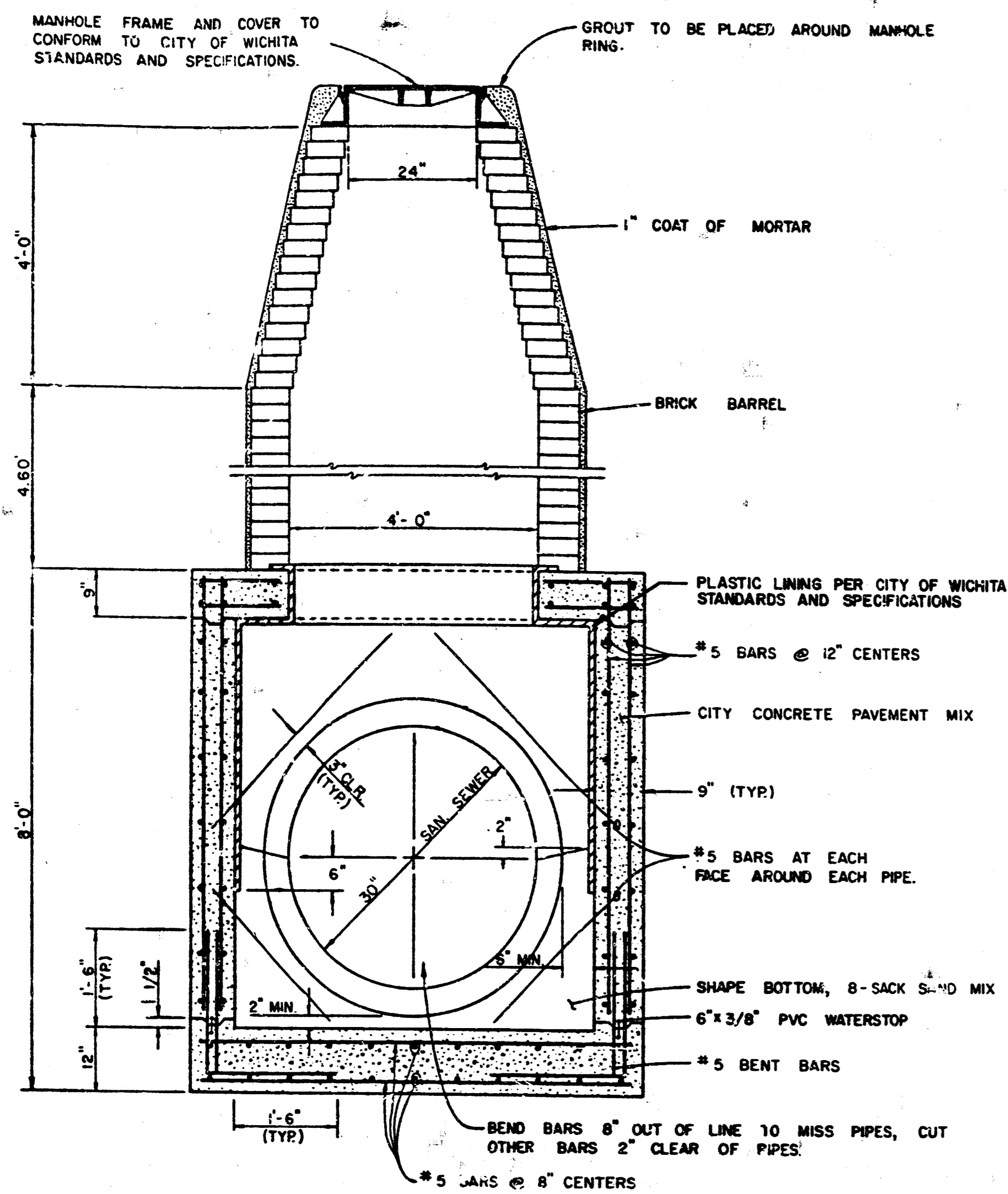
CITY OF WICHITA PROJECT NO. 468-76-245-81288 -000-000-001

OCTOBER, 1983

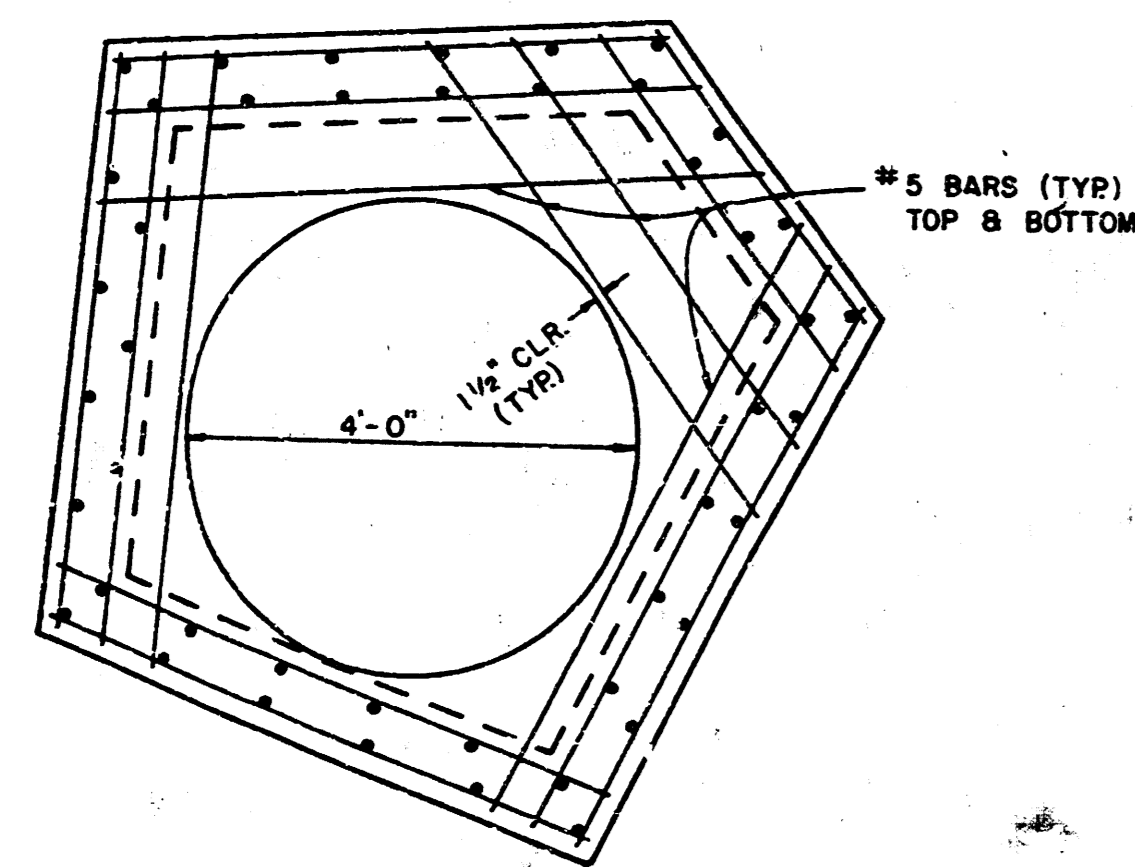
PLANS PREPARED BY

PROFESSIONAL ENGINEERING CONSULTANTS, P.A.
ENGINEERS
WICHITA, KANSAS

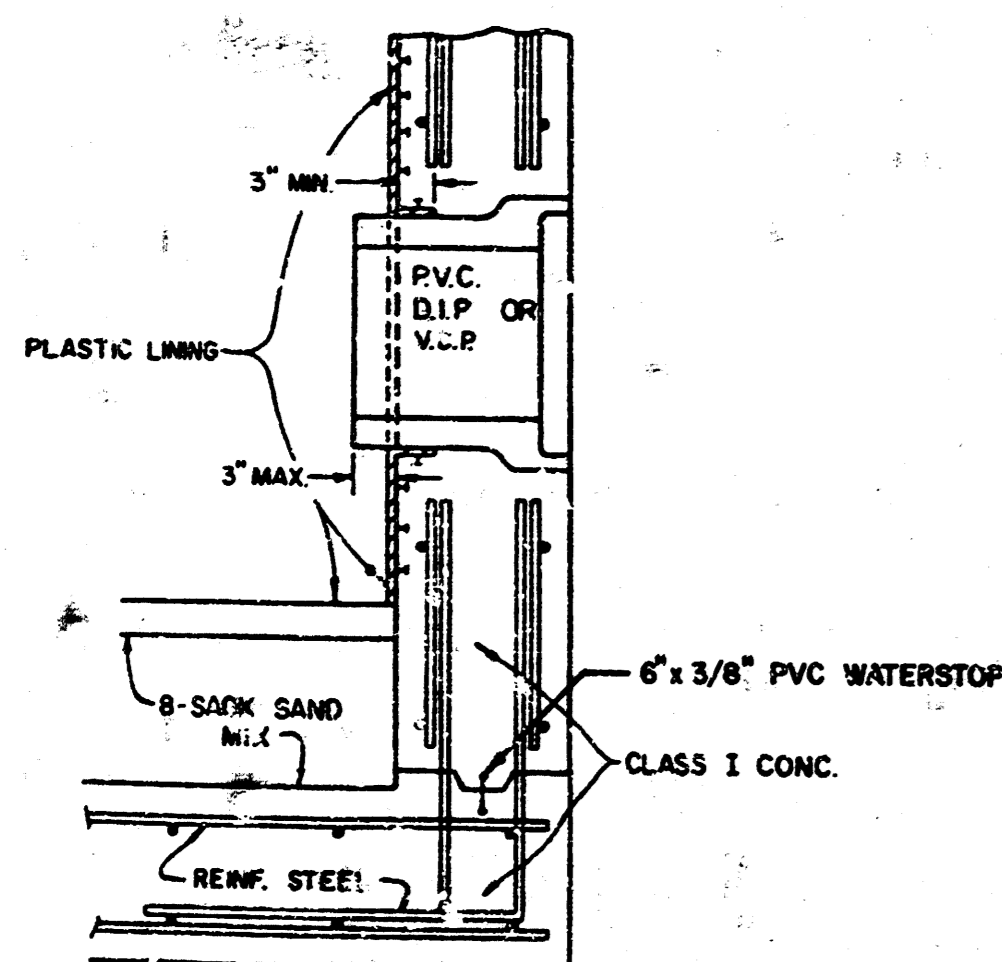




SECTION "X"
REINFORCED CONCRETE MANHOLE
(NOT TO SCALE)



SPECIAL REINFORCED CONCRETE MANHOLE
TOP SLAB REINFORCEMENT 1/2" = 1'-0"



PIPE CONNECTION DETAIL
(NOT TO SCALE)

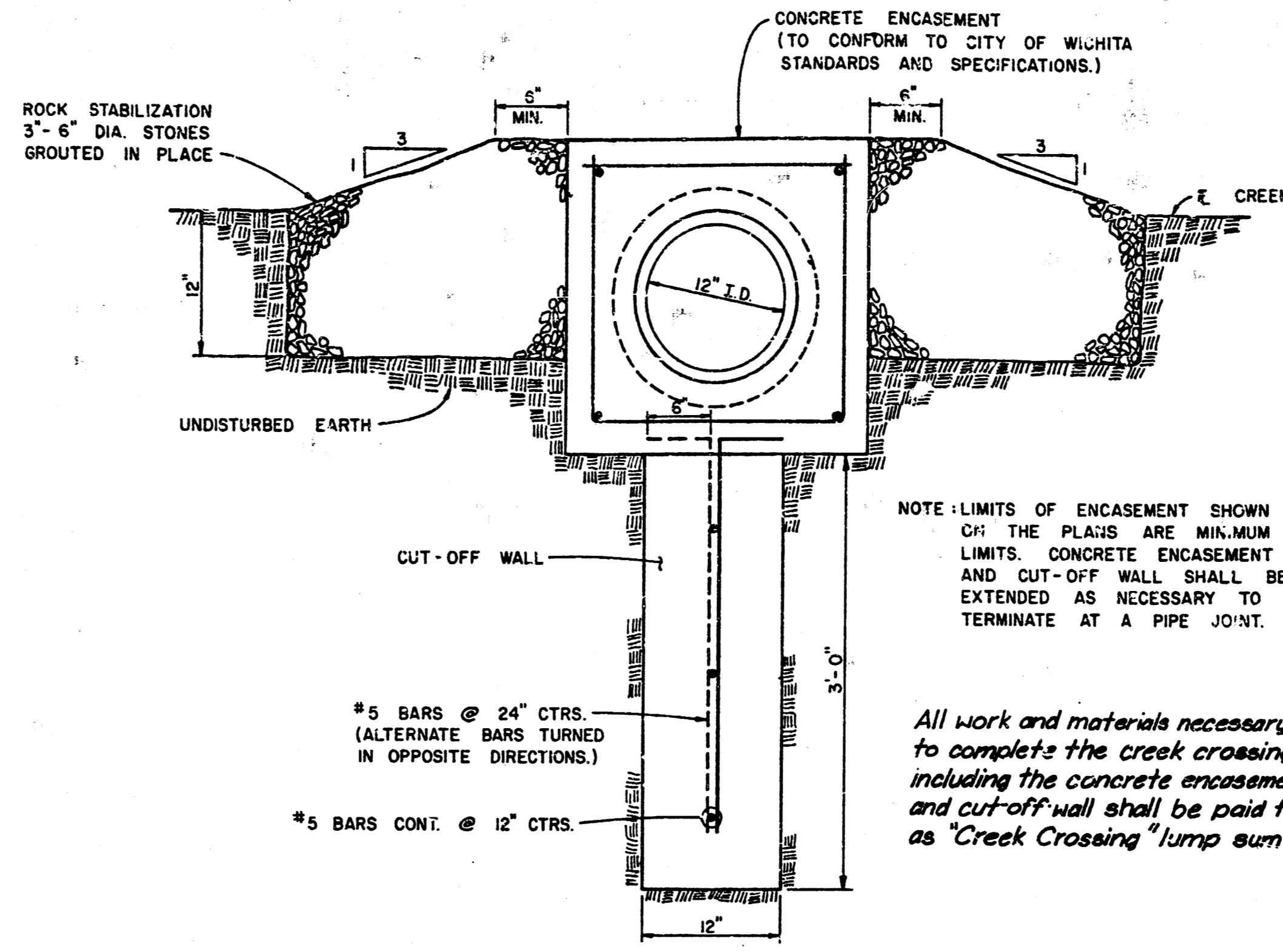
SPECIAL REINFORCED CONCRETE MANHOLE
PLAN VIEW 1/2" = 1'-0"

SPECIAL REINFORCED CONCRETE MANHOLE NOTES

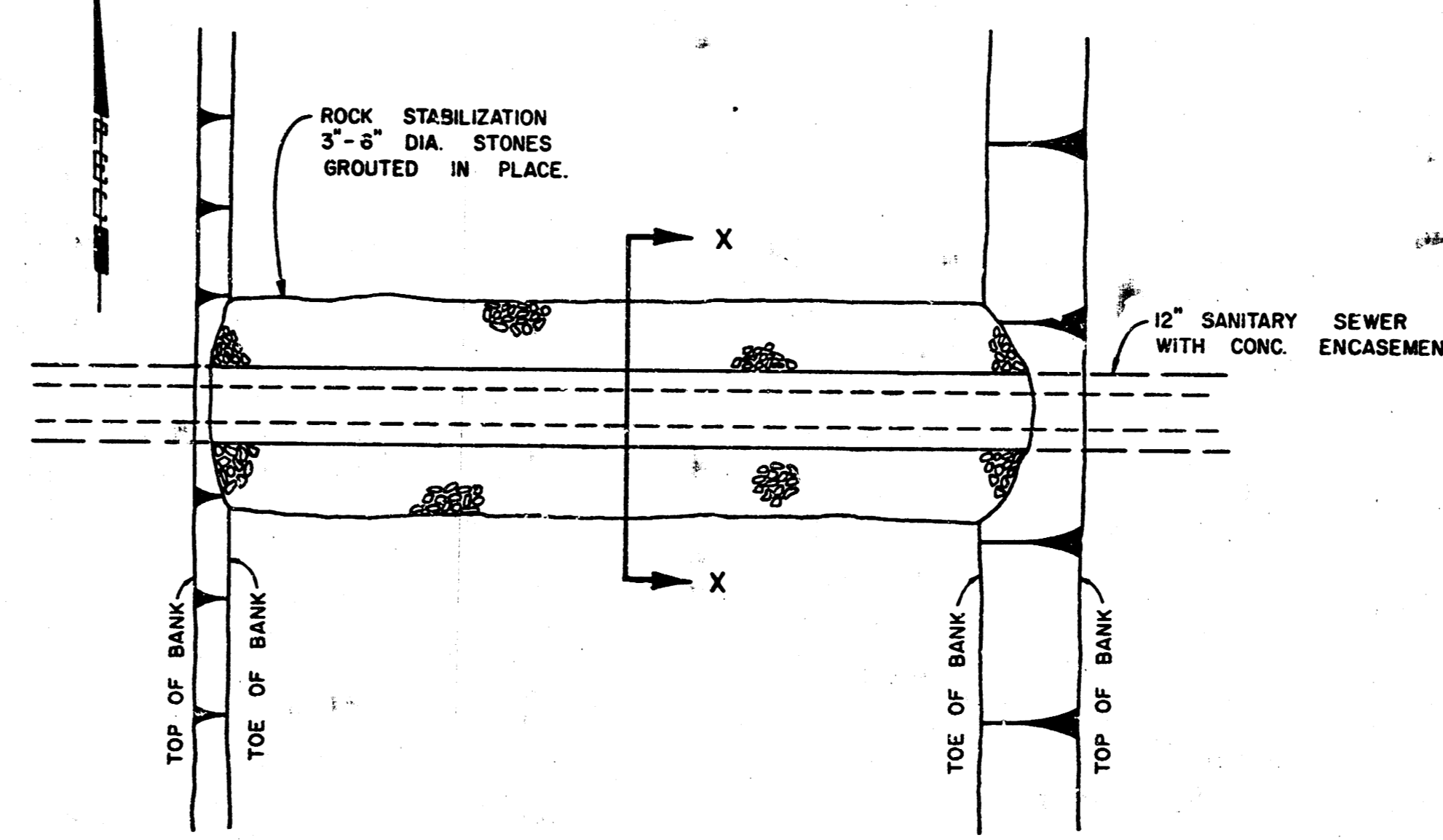
- IF, IN THE OPINION OF THE ENGINEER, THE MANHOLE SUBGRADE APPEARS UNSTABLE, THE CONTRACTOR WILL HAVE THE OPTION TO COMPACT SUBGRADE PER THE SPECIFICATIONS OR INCREASE THE THICKNESS OF THE MANHOLE BASE AS DIRECTED BY THE ENGINEER.
- MORTAR USED IN MASONRY CONSTRUCTION SHALL BE 8-SACK SAND MIX AS DEFINED IN THE SPECIFICATIONS.
- WHEN OPENINGS ARE CUT IN MANHOLE WALLS FOR PIPE, THE PIPE SHALL BE GROUTED IN PLACE WITH NON-SHRINKING GROUT. EXTERIOR OF COMPLETED CONNECTION SHALL BE SEALED WITH APPROVED COATINGS.
- ALL MANHOLE CONSTRUCTION SHALL BE WATER TIGHT.
- APPROVED FLEXIBLE WATERSTOP GASKETS SHALL BE INSTALLED TO JOIN THE PIPE TO THE MANHOLE WALL WHEN A.B.S. COMPOSITE PIPE OR P.V.C. PIPE IS USED. ALL SEWERS EXTENDING FROM THE MANHOLE SHALL BE SUPPORTED WITH CONCRETE ENCASEMENT A MINIMUM OF 5 FEET FROM THE MANHOLE WALL.
- CONCRETE FOR THE MANHOLE BASE SHALL BE CITY CONCRETE PAVEMENT MIX AS DESCRIBED IN THE SPECIFICATIONS.

BASELINE P.I. REFERENCE TIES

- P.I. NO. 1 - CENTER OF EXISTING M.
- P.I. NO. 2 - 1/2" PINCHED PIPE
15.28' E, NAIL AND SHINER IN NORTH FACE 12" ELM
55.32' E, NAIL IN CENTER OF EXISTING MANHOLE COVER
11.71' SSW, NAIL AND SHINER IN NORTHWEST FACE 36" OSAGE ORANGE
- P.I. NO. 3 - 1/2" REBAR
29.16' N, NAIL AND SHINER IN WEST FACE 42" COTTONWOOD
0.70' S, TO WOOD FENCE
108.71' W, NAIL IN CENTER OF EXISTING MANHOLE COVER
- P.I. NO. 4 - 1/2" REBAR
36.18' SSW, NAIL AND SHINER IN WEST FACE 6" ELM
- P.I. NO. 5 - 1/2" REBAR
7.00' NE, CENTER OF 1" COTTONWOOD
- P.I. NO. 6 - 1/2" REBAR (IN CREEK BOTTOM)
19.35' SW, NAIL AND SHINER IN SOUTHEAST FACE 6" ELM
20.39' NW, NAIL AND SHINER IN NORTHEAST FACE 12" COTTONWOOD
9.28' E, NAIL AND SHINER IN SOUTH FACE 22" MULBERRY
- P.I. NO. 7 - 1/2" REBAR (10' NORTH OF DIRT ROAD)
76.98' ESE, NAIL AND SHINER IN NORTH FACE 12" ELM
48.50' SE, NAIL AND SHINER IN WEST FACE 6" ELM
81.75' SW, NAIL AND SHINER IN SOUTHEAST FACE 12" ELM
- P.I. NO. 8 - 1/2" REBAR (ALONG SOUTH EDGE DIRT ROAD)
11.81' SW, NAIL AND SHINER IN NORTHWEST FACE 6" MULBERRY
39.65' SE, NAIL AND SHINER IN NORTHEAST FACE 7" MULBERRY
97.52' WSW, NAIL AND SHINER IN NORTH FACE 12" ELM
- P.I. NO. 9 - 1/2" REBAR
28.50' NE, 2-1" ELM TREES
131.77' W, NAIL AND SHINER IN NORTH FACE 17" ELM
31.00' N, CENTER 4' TALL SAPLING
- P.I. NO. 10 - 1/2" REBAR
26.08' SSE, NAIL AND SHINER IN WEST FACE 10" ELM
23.33' SSW, NAIL AND SHINER IN WEST FACE 6" MULBERRY
- P.I. NO. 11 - 1/2" REBAR
103.35' N, NAIL AND SHINER IN WEST FACE 3" LOCUST
- P.I. NO. 12 - 1/2" REBAR
46.00' W, 2" ELM TREE
72.45' NW, NOTCH IN TOP OF "NO TRESPASSING - KEEP OUT" SIGN
148.46' NE, NAIL AND SHINER IN WEST FACE 6" COTTONWOOD
- P.I. NO. 13 - 1/2" REBAR
72.39' SE, NAIL AND SHINER IN SOUTHWEST FACE 14" ELM
19.65' ENE, 3/4" I.P. * SOUTHEAST CORNER P.H.I. ADDITION
53.11' N, 40g NAIL AND SHINER IN EAST FACE 24" WILLOW
- P.I. NO. 14 - 1/2" REBAR
80' ENE, 2" ELM TREE
194' SE, 18" OSAGE ORANGE



CREEK CROSSING & CONC. ENCASE. W/ CUT-OFF WALL
SECTION X-X



CREEK CROSSING & CONC. ENCASEMENT
WITH CUT-OFF WALL
PLAN VIEW

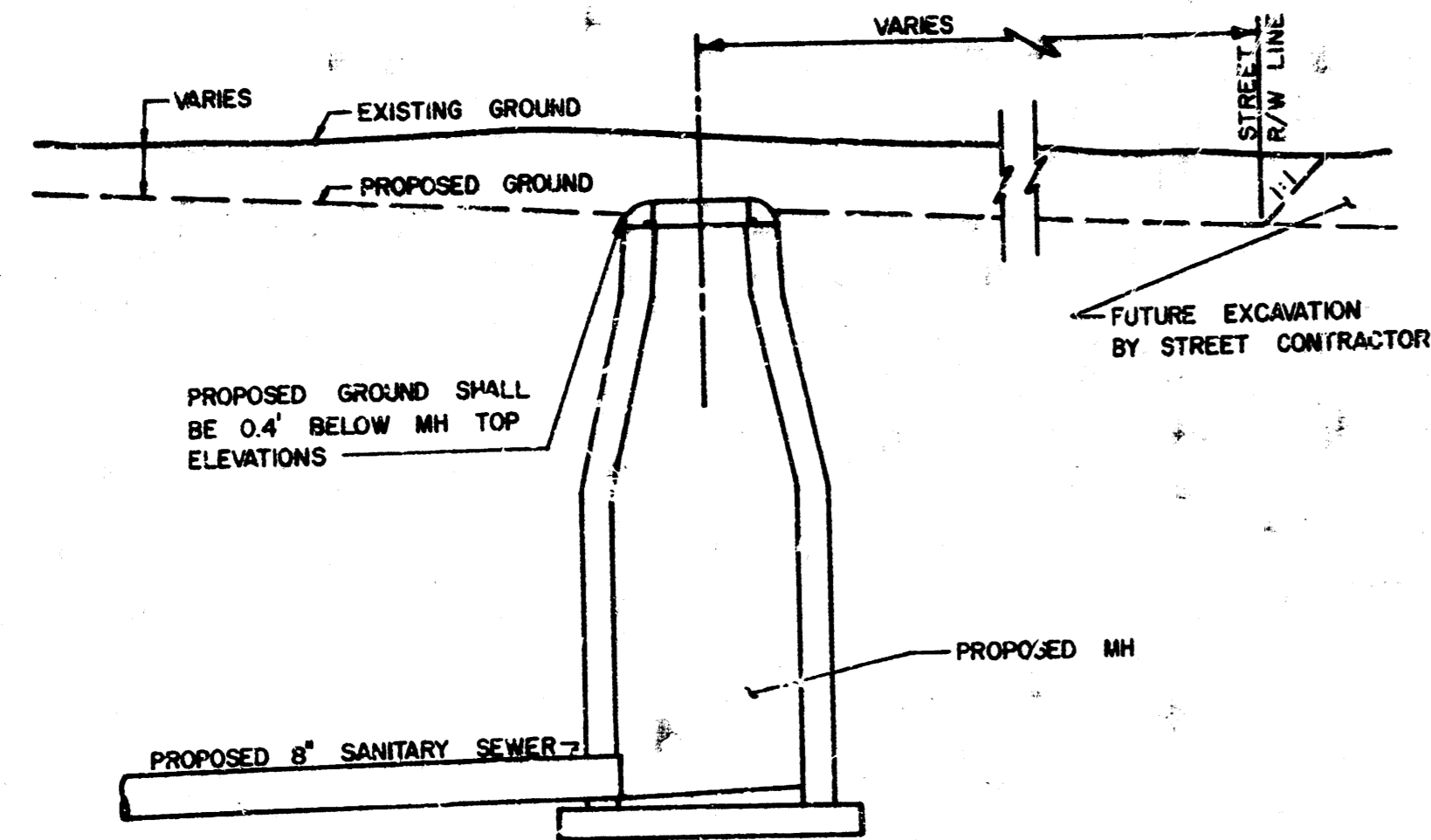
P.I. NO.	BASELINE STATION	COORDINATES	
		NORTH	EAST
1	0+00.00	1,540.4102	1,623.5465
2	1+92.21	1,663.0580	1,771.5405
3	3+55.92	1,668.6845	1,935.1552
4	6+76.77	1,385.0763	2,085.1951
5	7+87.19	1,423.2016	2,188.8241
6	8+62.72	1,349.2483	2,204.1896
7	9+69.28	1,250.3744	2,243.9353
8	11+38.99	1,303.7507	2,405.0337
9	14+29.53	1,342.0685	2,693.0575
10	17+68.67	1,578.5011	2,936.1724
11	19+71.05	1,554.7998	3,137.1626
12	21+75.91	1,677.8757	3,300.9272
13	27+10.05	1,658.2495	3,834.7024
14	30+89.23	1,279.9448	3,860.4290

NOTE: NORTHEAST CORNER OF THE SOUTHEAST QUARTER OF SECTION 20, T27S, R2E, OF THE 6th P.M. = 2,993.4973 N 4,428.5212 E

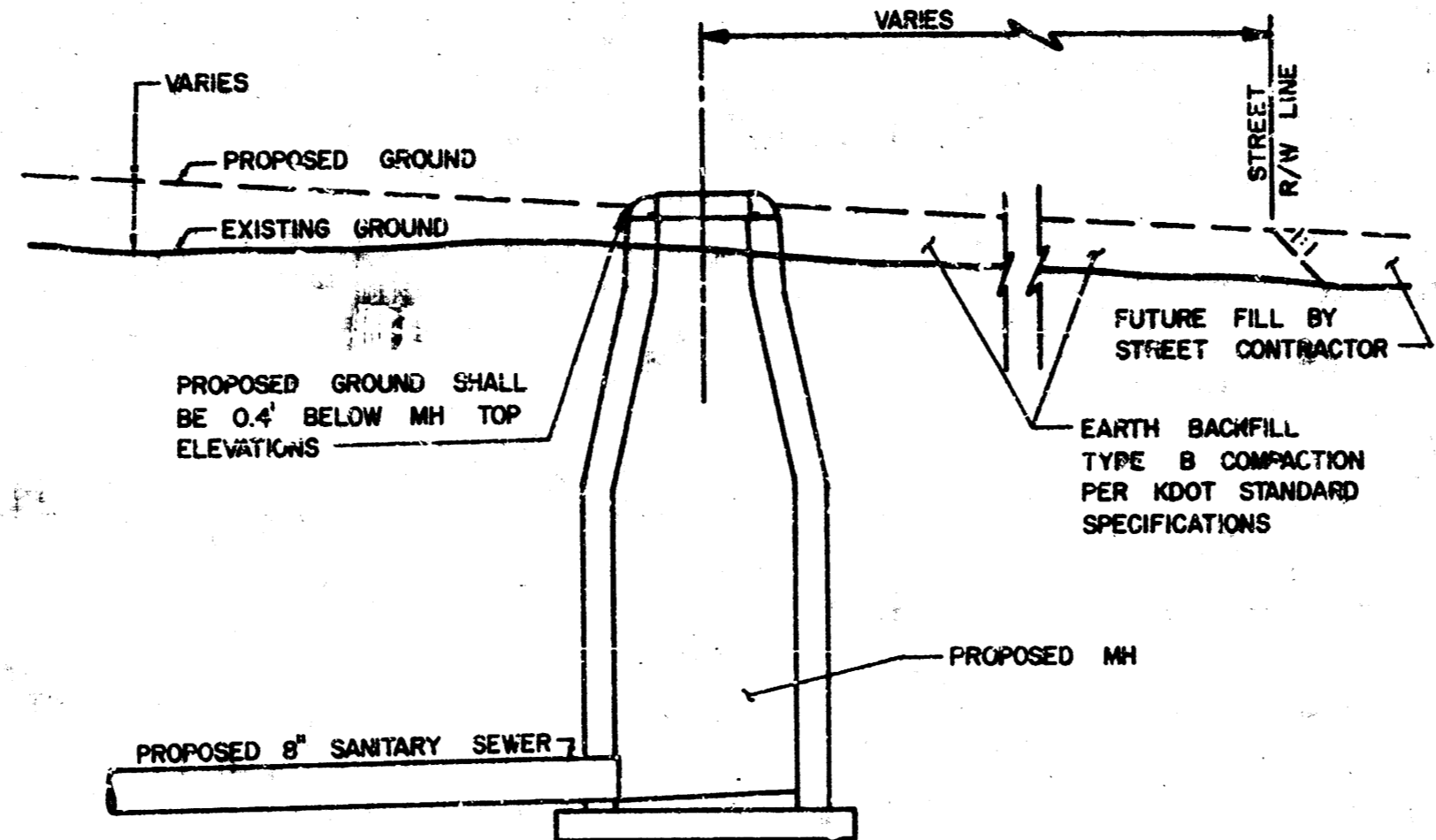
- GENERAL NOTES
- ALL CONSTRUCTION AND MATERIALS TO COMPLY WITH CITY OF WICHITA SPECIFICATIONS AND STANDARDS.
 - ALL ELEVATIONS SHOWN ARE CITY OF WICHITA DATUM (USGS-1187.4-CITY DATUM).
 - THE CONTRACTOR SHALL LIMIT THE EXTENT OF TRENCH TO REMAIN OPEN OVERNIGHTS AND WEEKENDS TO LESS THAN 50 FEET.
 - AT LEAST 24 HOURS PRIOR TO BEGINNING EXCAVATION (EXCLUDING WEEKENDS AND HOLIDAYS), THE CONTRACTOR SHALL CONTACT THE UTILITY LOCATION SERVICE "KAM-IT-DIG-IT" AT (316) 267-2880 TO REQUEST THE FOLLOWING UTILITY COMPANIES TO LOCATE ANY EXISTING LINES WITHIN THE PROJECT AREA: GAS SERVICE COMPANY, K.G.B.E., SOUTHWESTERN BELL TELEPHONE COMPANY, THE WICHITA WATER DEPARTMENT, AND AIR CAPITAL CABLEVISION. THE CONTRACTOR SHALL ALSO CALL THE UTILITY LISTED BELOW AT LEAST 48 HOURS PRIOR TO BEGINNING EXCAVATING (EXCLUDING WEEKENDS AND HOLIDAYS) TO REQUEST LOCATION OF EXISTING UTILITIES WITHIN THE PROJECT AREA.

NORTHWEST CENTRAL PIPELINE CORPORATION
4002 S. SENCA
WICHITA, KANSAS 67217
(316) 524-0491
MR. AUBREY SUMMERS
 - THE CONTRACTOR SHALL AVOID REMOVAL OR TRIMMING OF ANY TREES WHERE POSSIBLE WHERE THE CONTRACTOR BELIEVES THE REMOVAL OR TRIMMING IS UNAVOIDABLE, HE SHALL COORDINATE SUCH WORK WITH THE ENGINEER.
 - TREE REMOVAL AND TREE TRIMMING SHALL BE DONE BY THE CONTRACTOR UNDER THE SUPERVISION OF THE ENGINEER AND SHALL BE CONSIDERED AS SUBSIDIARY TO OTHER ITEMS OF WORK.
 - WHERE REMOVAL OF EXISTING FENCES PARALLEL TO THE CONSTRUCTION IS DEEMED NECESSARY BY THE CONTRACTOR, THE CONTRACTOR SHALL COORDINATE REMOVAL WITH THE ENGINEER. REMOVAL AND RESETTING OF FENCES SHALL NOT BE PAID FOR SEPARATELY, BUT SHALL BE CONSIDERED AS SUBSIDIARY TO THE OTHER ITEMS OF WORK.
 - TREES REMOVED, TREE TRIMMINGS, FENCES, AND OTHER DEBRIS SHALL BE HAULED FROM THE SITE BY THE CONTRACTOR AND WASTED AS DIRECTED BY THE ENGINEER AT NO ADDITIONAL COST TO THE OWNER.
 - THE CONTRACTOR SHALL RESTORE ALL DITCHES, SWALES, ROAD SHOULDERS, ENTRANCES, AND BANK LINES TO THEIR ORIGINAL SLOPES AND GRADES.
 - THE CONTRACTOR SHALL BE RESPONSIBLE FOR MAINTAINING CONTINUOUS FLOW OF SEWAGE, THROUGH CONSTRUCTION. CONTRACTOR'S PROPOSED METHOD FOR MAINTAINING SEWAGE FLOW SHALL BE APPROVED BY THE ENGINEER. CONTRACTOR MAY CONSTRUCT ADDITIONAL MANHOLES TO FACILITATE MAINTAINING SEWAGE FLOW. TYPE AND LOCATION OF EXTRA MANHOLES TO FACILITATE HANDLING OF SEWAGE THROUGH CONSTRUCTION WILL NOT BE PAID FOR DIRECTLY AND THIS COST SHALL BE CONSIDERED AS SUBSIDIARY TO THE OTHER ITEMS OF WORK. NO PAYMENT WILL BE MADE FOR EXTRA MANHOLES CONSTRUCTED BY THE CONTRACTOR TO FACILITATE HANDLING SEWAGE THROUGH CONSTRUCTION AS THIS COST SHALL BE CONSIDERED AS SUBSIDIARY TO THE OTHER ITEMS OF WORK.
 - THE CONTRACTOR SHALL BE RESPONSIBLE FOR PRESERVING PROPERTY IRONS. THE CONTRACTOR SHALL BE REQUIRED TO RE-ESTABLISH ANY PROPERTY IRONS WHICH ARE DAMAGED OR DESTROYED BY HIS CONSTRUCTION OPERATIONS. SUCH IRONS SHALL BE RE-ESTABLISHED BY A LICENSED LAND SURVEYOR OR A LICENSED PROFESSIONAL ENGINEER IN ACCORDANCE WITH STATE LAWS. ALL COSTS FOR THIS WORK SHALL BE SUBSIDIARY TO THE OTHER ITEMS OF WORK.
 - RISERS AND ADDITIONAL STUBS SHALL BE INSTALLED ON THIS PROJECT TO SERVE INDIVIDUAL'S LOTS WHEN ORDERED BY THE FIELD ENGINEER. RISER CONSTRUCTION SHALL CONFORM TO CITY OF WICHITA SPECIFICATIONS AND STANDARDS. LOCATIONS OF THE ENDS OF THE RISERS SHALL BE MARKED BY FASTENING GREEN COLORED PLASTIC TAPE TO THE END OF THE RISER AND BROUGHT TO THE GROUND SURFACE AS THE EXCAVATION IS BACKFILLED SUCH THAT THE COLORED TAPE WILL BE VISIBLE WHEN THE PROJECT IS COMPLETED. ALL RISERS SHALL BE CONSTRUCTED USING S.D.R. 23.5 A.B.S. OR P.V.C. PIPE.
 - THE CONTRACTOR SHALL DISPOSE OF ALL EXCESS EXCAVATED SOIL ON SITE AS DIRECTED BY THE ENGINEER.

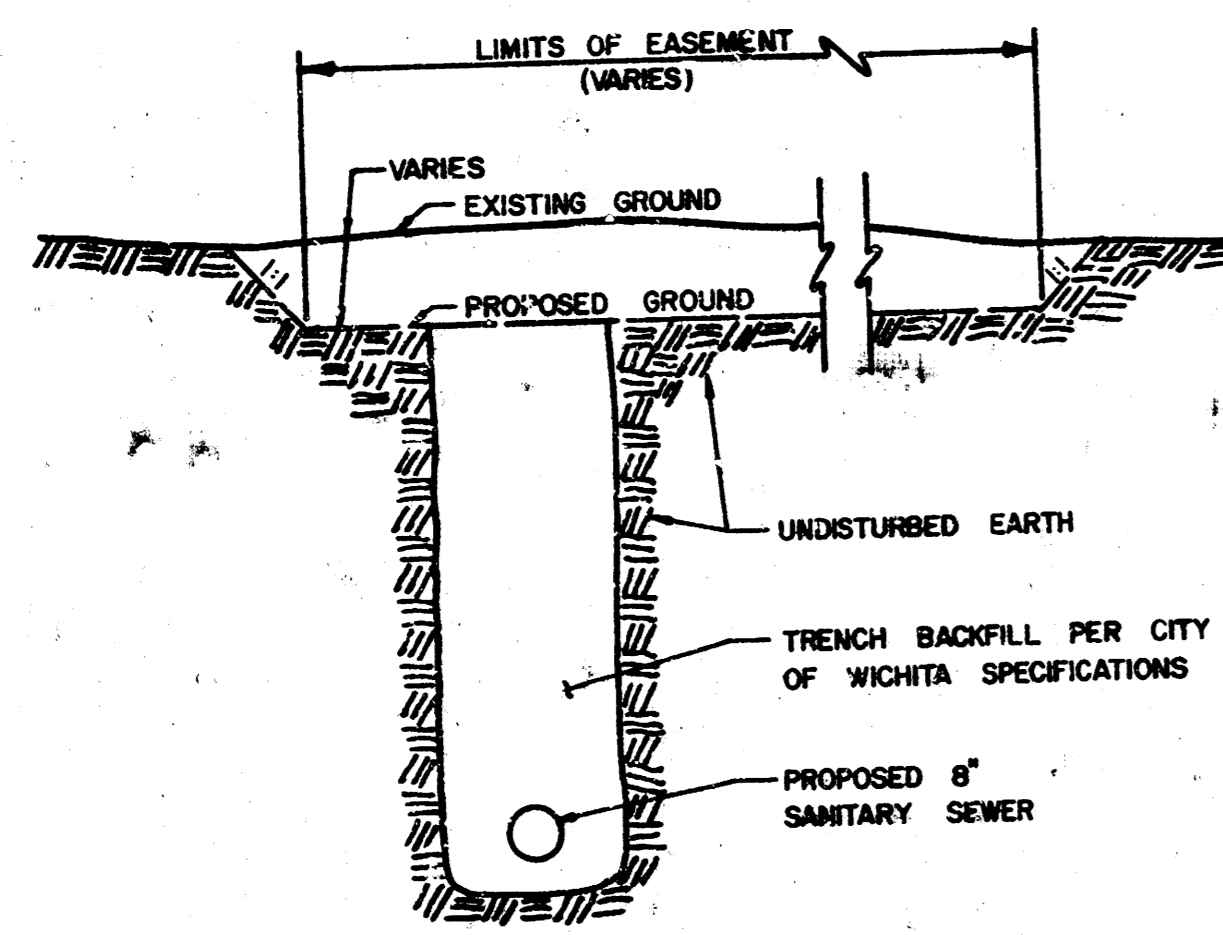
	No.	Revision	By	Date
	SANITARY SEWER IMPROVEMENTS MAXWELL ADDITION AND MAXWELL 2ND ADDITION			
	GENERAL NOTES AND DETAILS			
	THE CITY OF WICHITA LATERAL 15, MAIN 15, WAR INDUSTRIES SEWER PROFESSIONAL ENGINEERING CONSULTANTS, P.A. ENGINEERS WICHITA, KANSAS			
Designed by	RDM	Job No.	34-1844-3	Sht. 2 of 8
Drawn by	GM	Date	Sept. 1982	



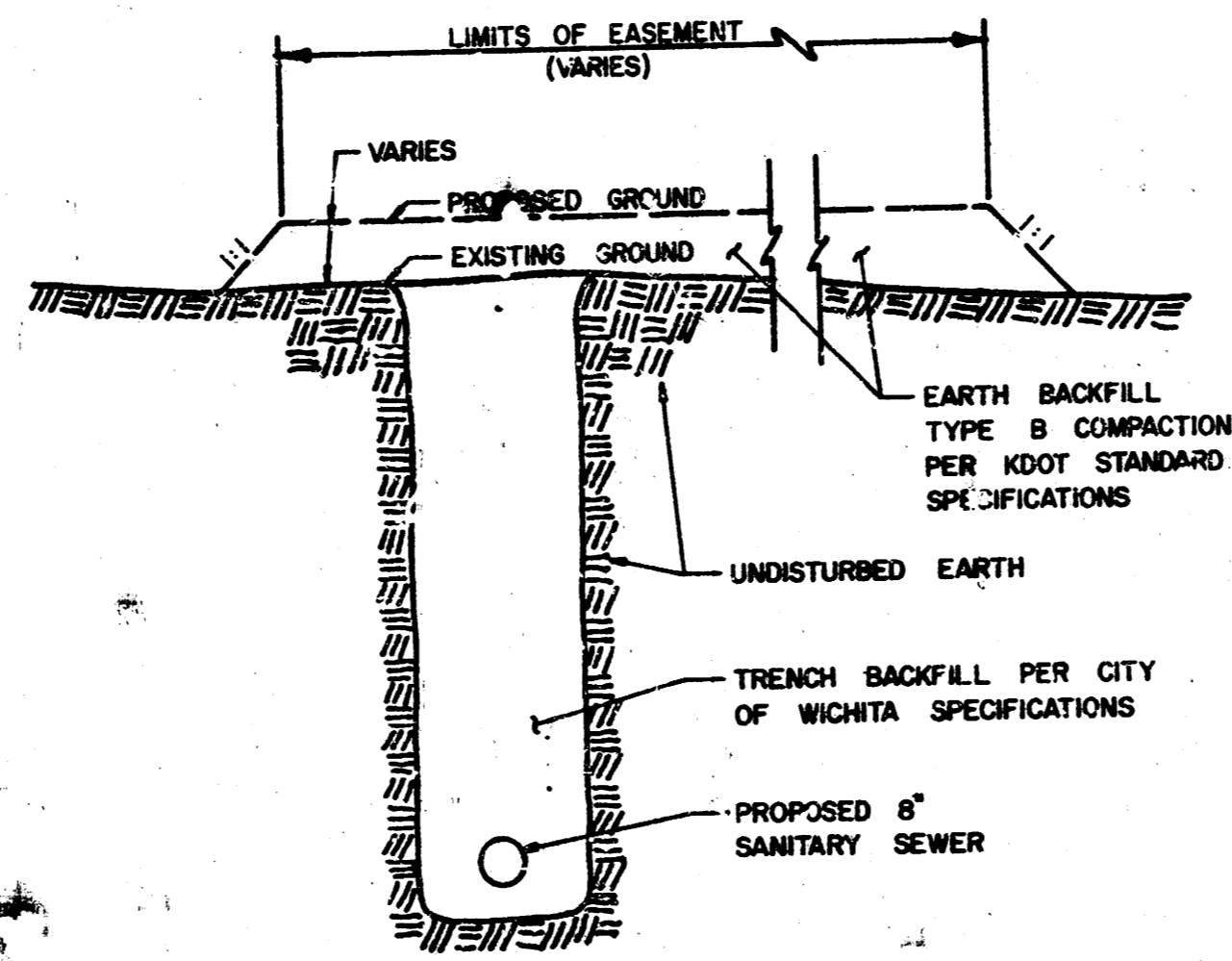
TYPICAL PROFILE
"CUT" SITUATIONS



TYPICAL PROFILE
"FILL" SITUATIONS

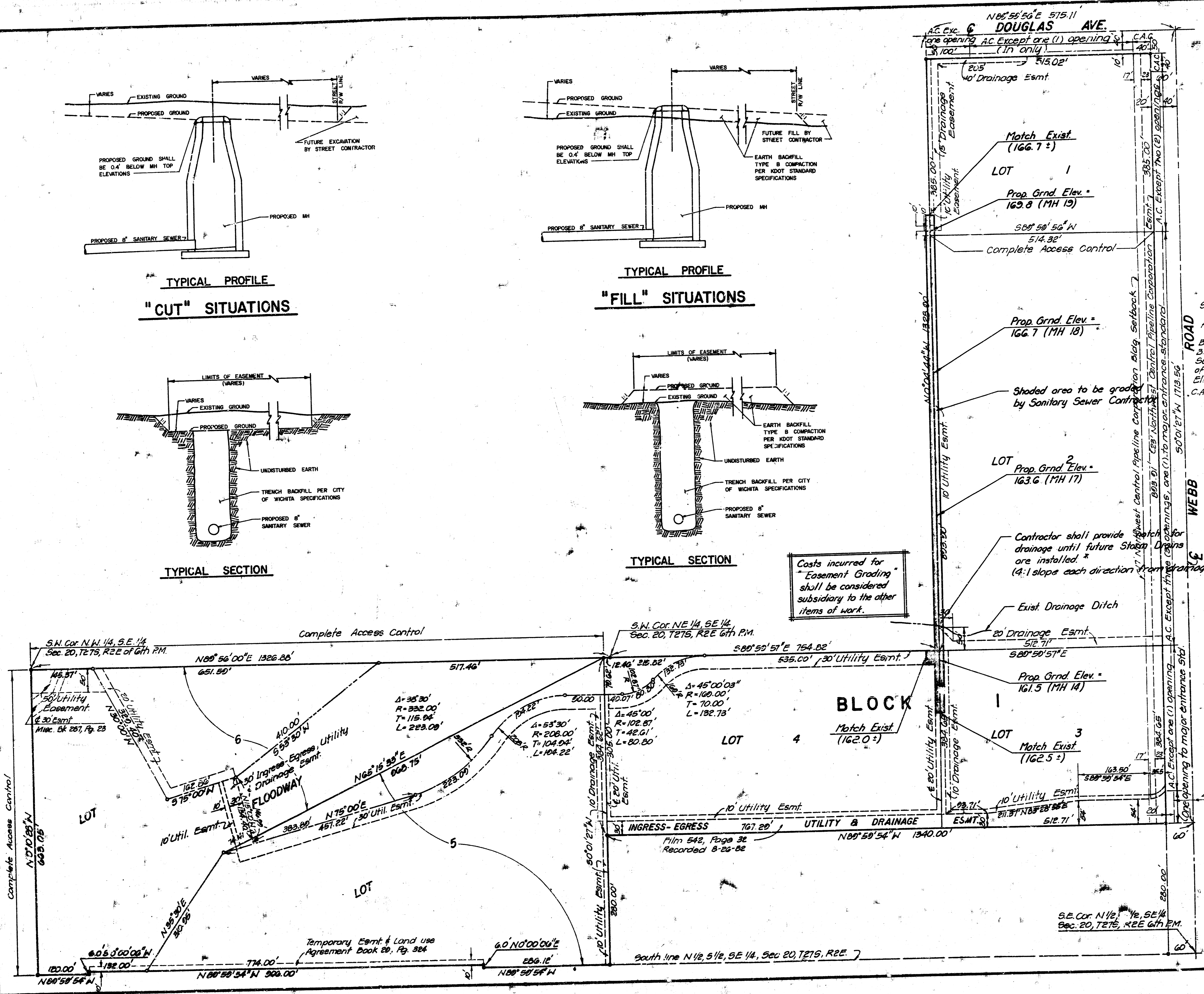


TYPICAL SECTION



TYPICAL SECTION

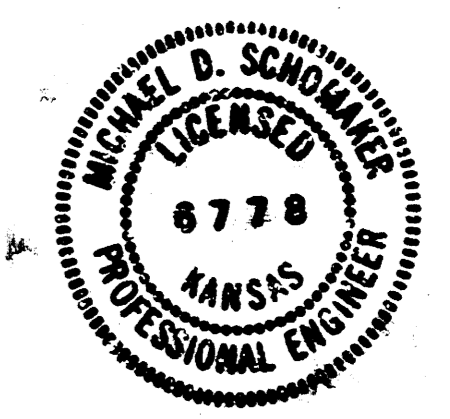
Costs incurred for "Easement Grading" shall be considered subsidiary to the other items of work.



Scale 1"=100'
• = Iron set
Aug. 1982
B.M. City of Wichita
3 M. disc, 73.4 feet
South & 31 feet East
of Webb & Kellogg
Elev. 179.16 City Datum
C.A.C. = Complete Access
Control

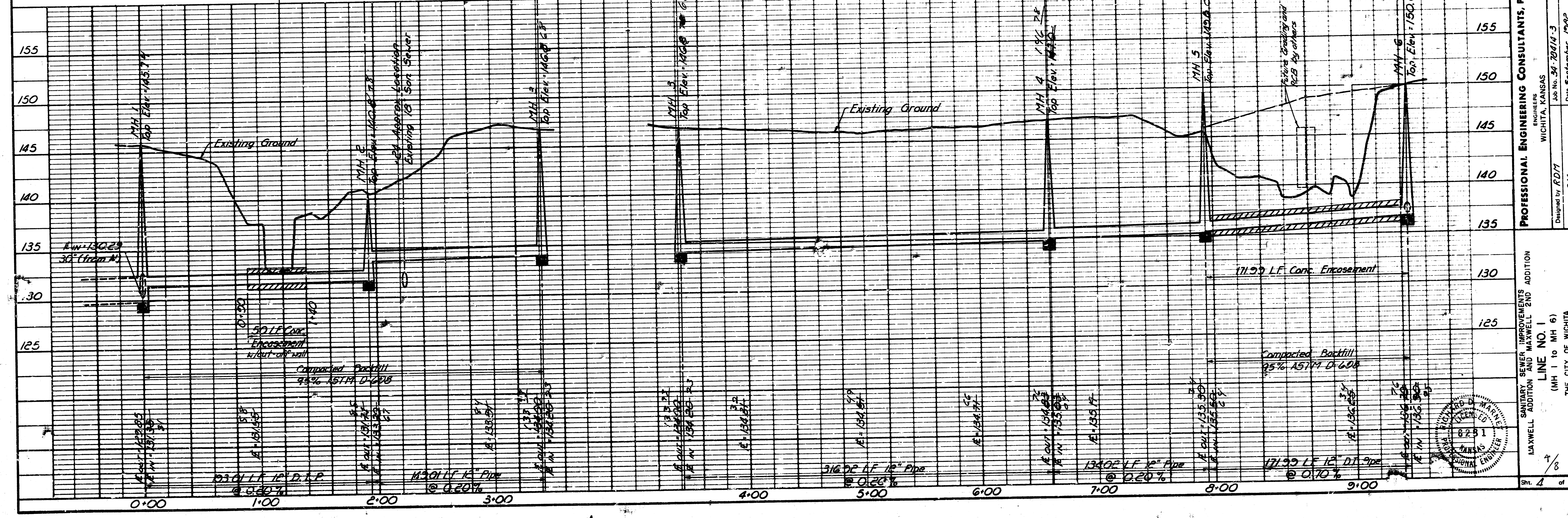
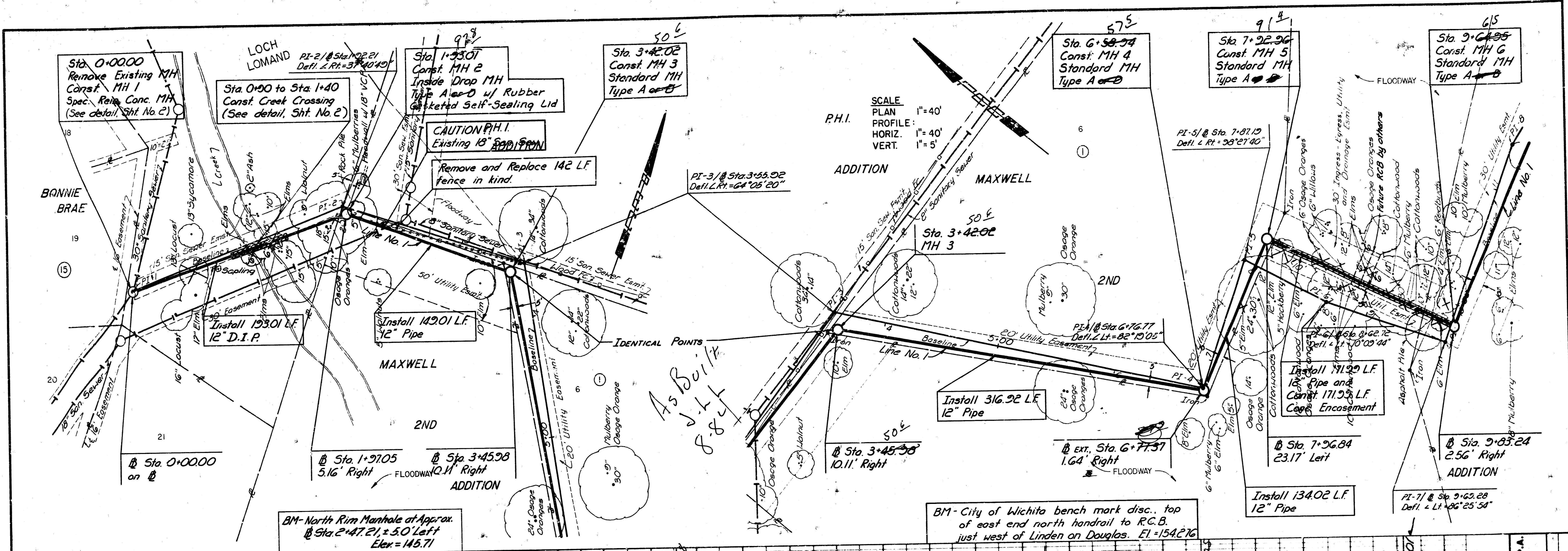
Note: Areas within the plot site not shown graded at this time shall be graded later by others.

* Storm Drain Contractor will be responsible for regrading "notch" after Storm Drain installation.



No.	Revision	By	Date
	SANITARY SEWER IMPROVEMENTS MAXWELL ADDITION AND MAXWELL 2ND ADDITION		
EASEMENT GRADING			
THE CITY OF WICHITA LATERAL 15, MAIN 15, WAR INDUSTRIES SEWER			
PROFESSIONAL ENGINEERING CONSULTANTS, P.A.			
ENGINEERS WICHITA, KANSAS			
Designed by R.W.L. MDS	Job No. 34-7844-3	Sht. 3 of 8	
Drawn by G.T.	Date Sept. 1982		

FILMED FROM THE BEST AVAILABLE COPY....



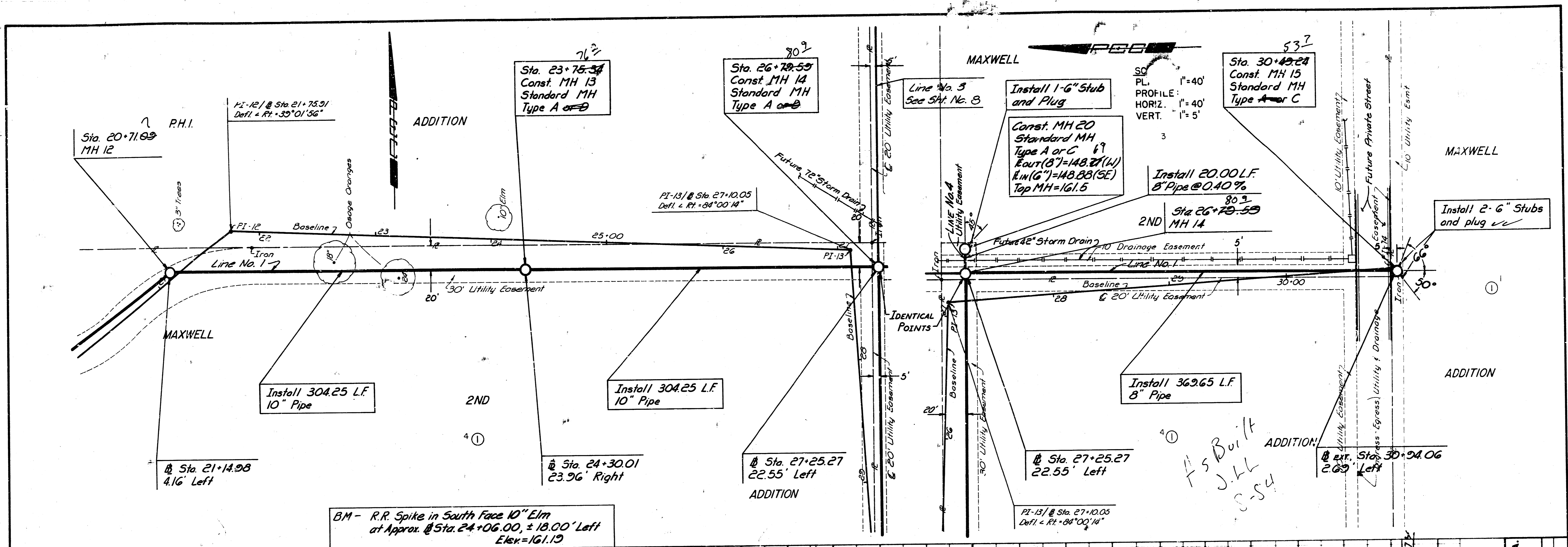
PROFESSIONAL ENGINEERING CONSULTANTS, P.A.
 ENGINEERS
 WICHITA, KANSAS
 Job No. 54-2074-3
 Date September, 1962

DESIGNED BY RDM
 DRAWN BY OJM

THE CITY OF WICHITA
 LATERAL 5, MAIN ST. WARE INDUSTRIES SEWER
 LINE NO. 1
 (MH 1 to MH 6)
 MAXWELL ADDITION AND MAXWELL 2ND
 SANITARY SEWER IMPROVEMENTS ADDITION

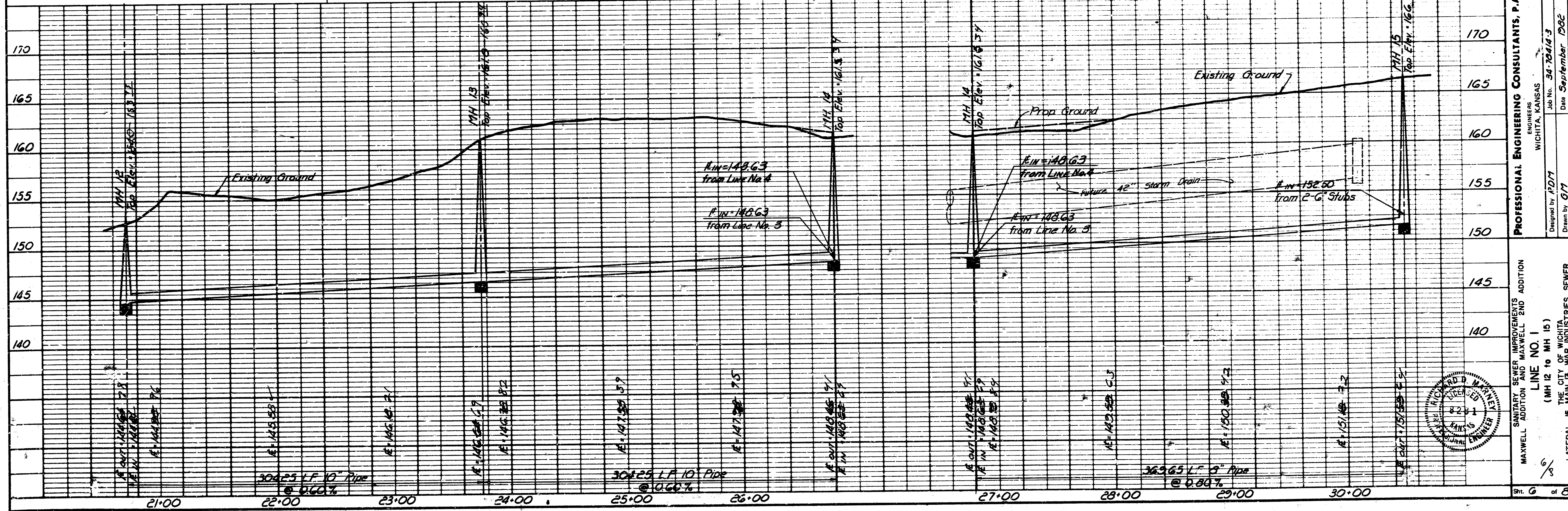
8231
 KANSAS
 SURVEYOR
 EXPIRES 1965

4/8
 SH. 4 OF 8



BM - R.R. Spike in South Face 10" Elm
at Approx. Sta. 24+06.00, ± 18.00' Left
Elev. = 161.19

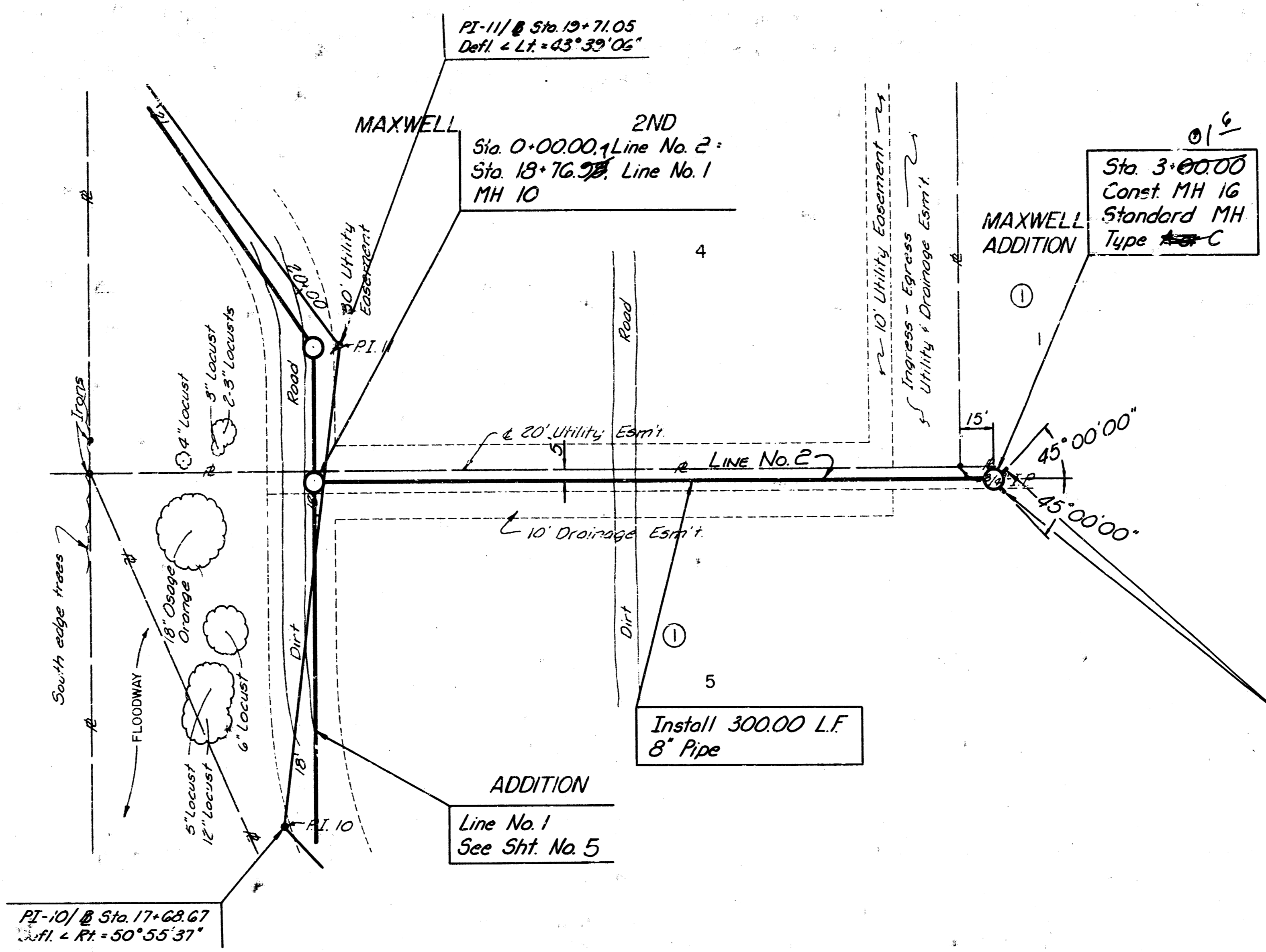
As Built
J.L.L.
C.S.4



PROFESSIONAL ENGINEERING CONSULTANTS, P.A.
ENGINEERS
WICHITA, KANSAS
Job No. 34-762/4-3
Designed by A.D.T.
Drawn by G.M.
Date September 1962

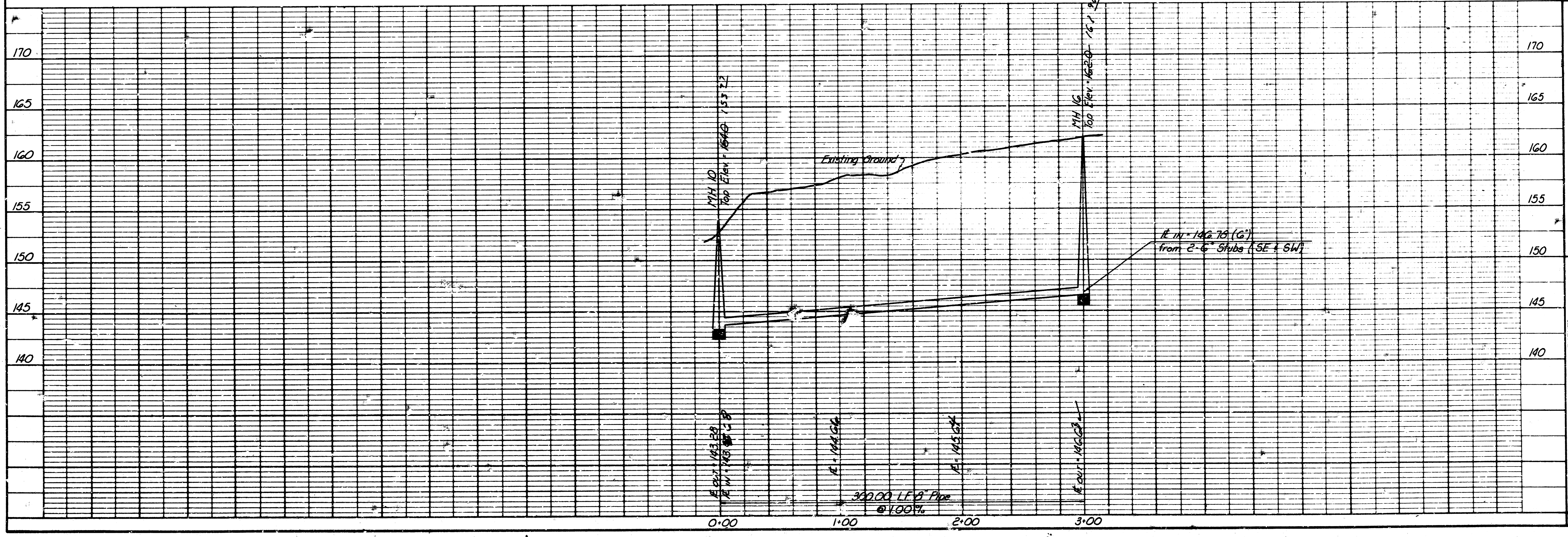
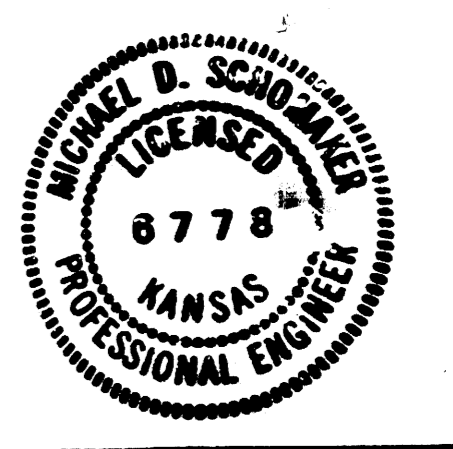
SANITARY SEWER IMPROVEMENTS
MAXWELL ADDITION AND MAXWELL 2ND ADDITION
LINE NO. 1
(MH 12 to MH 15)
THE CITY OF WICHITA
LATERAL 15, MAIN 15, WARP INDUSTRIES SEWER

Sh. 6 of 8



SCALE
 PLAN 1"=40'
 PROFILE 1"=40'
 HORIZ. 1"=40'
 VERT. 1"=5'

As Built
 J.L.L.
 8-80

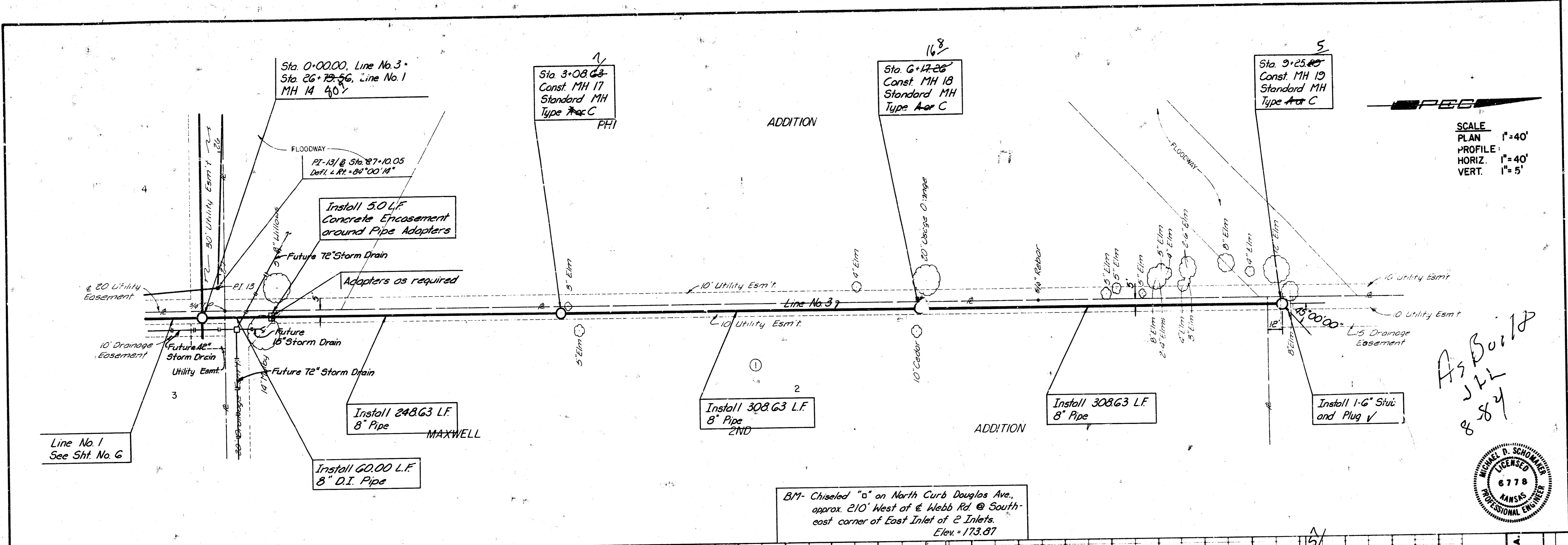


170	170
165	165
160	160
155	155
150	150
145	145
140	140

SAINTARY SEWER IMPROVEMENTS ADDITION
 MAXWELL ADDITION AND MAXWELL END
LINE NO. 2
 THE CITY OF WICHITA
 LATERAL B. MAIN B. WAR INDUSTRIES SEWER

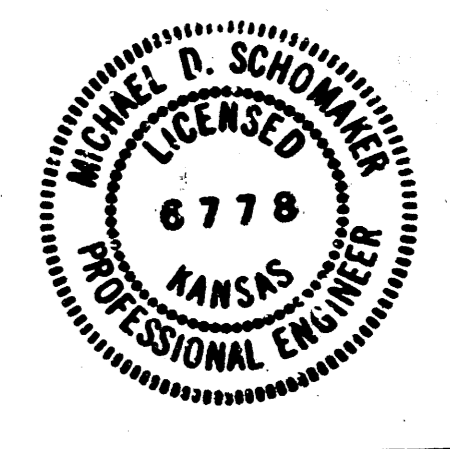
Professional Engineering Consultants, P.A.
 ENGINEERS
 WICHITA, KANSAS
 Job No. 34-23303
 Date October, 1983
 Designed by MDS
 Drawn by GT

7/8
 SH. 7 of 8

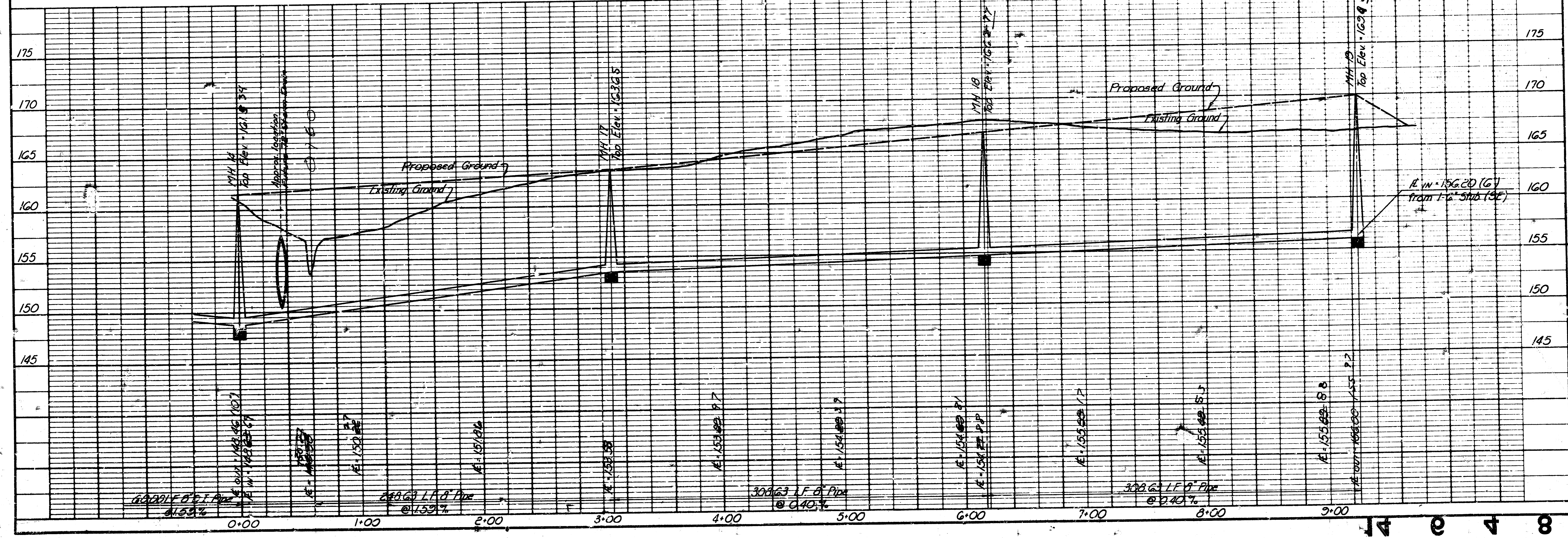


SCALE
 PLAN 1"=40'
 PROFILE 1"=40'
 VERT. 1"=5'

As Built
 JLL
 8/8/24



BM- Chiseled "a" on North Curb Douglas Ave., approx. 210' West of E Webb Rd. @ South-east corner of East Inlet of 2 Inlets. Elev. = 173.87



175	175
170	170
165	165
160	160
155	155
150	150
145	145

PROFESSIONAL ENGINEERING CONSULTANTS, P.A.
 ENGINEERS
 WICHITA, KANSAS
 Job No. 34-23503
 Drawn by: MDS
 Date: October 1983

MAXWELL SEWER IMPROVEMENTS ADDITION
 ADDITION
 LINE NO. 3
 THE CITY OF WICHITA
 LATERAL 15, MAIN B, WAR INDUSTRIES SEWER
 SH. 8 of 8