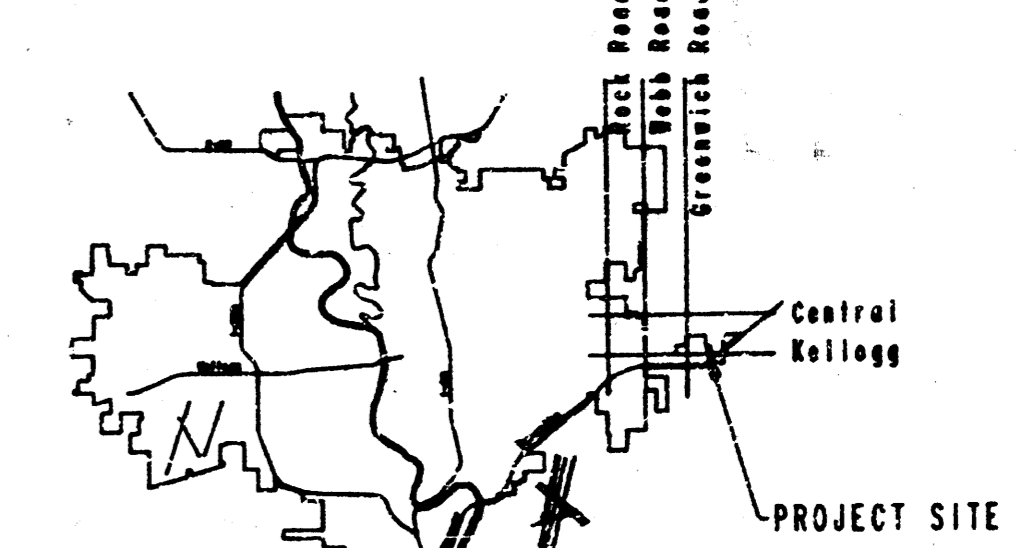


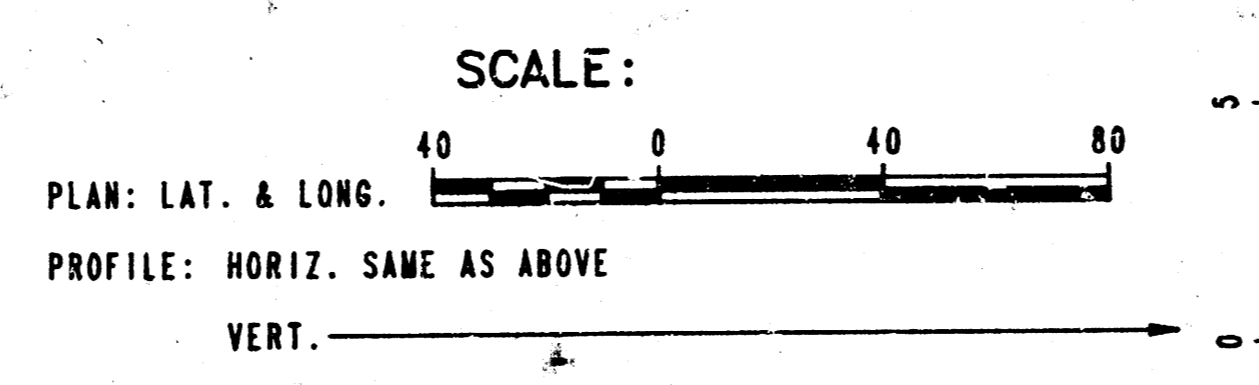
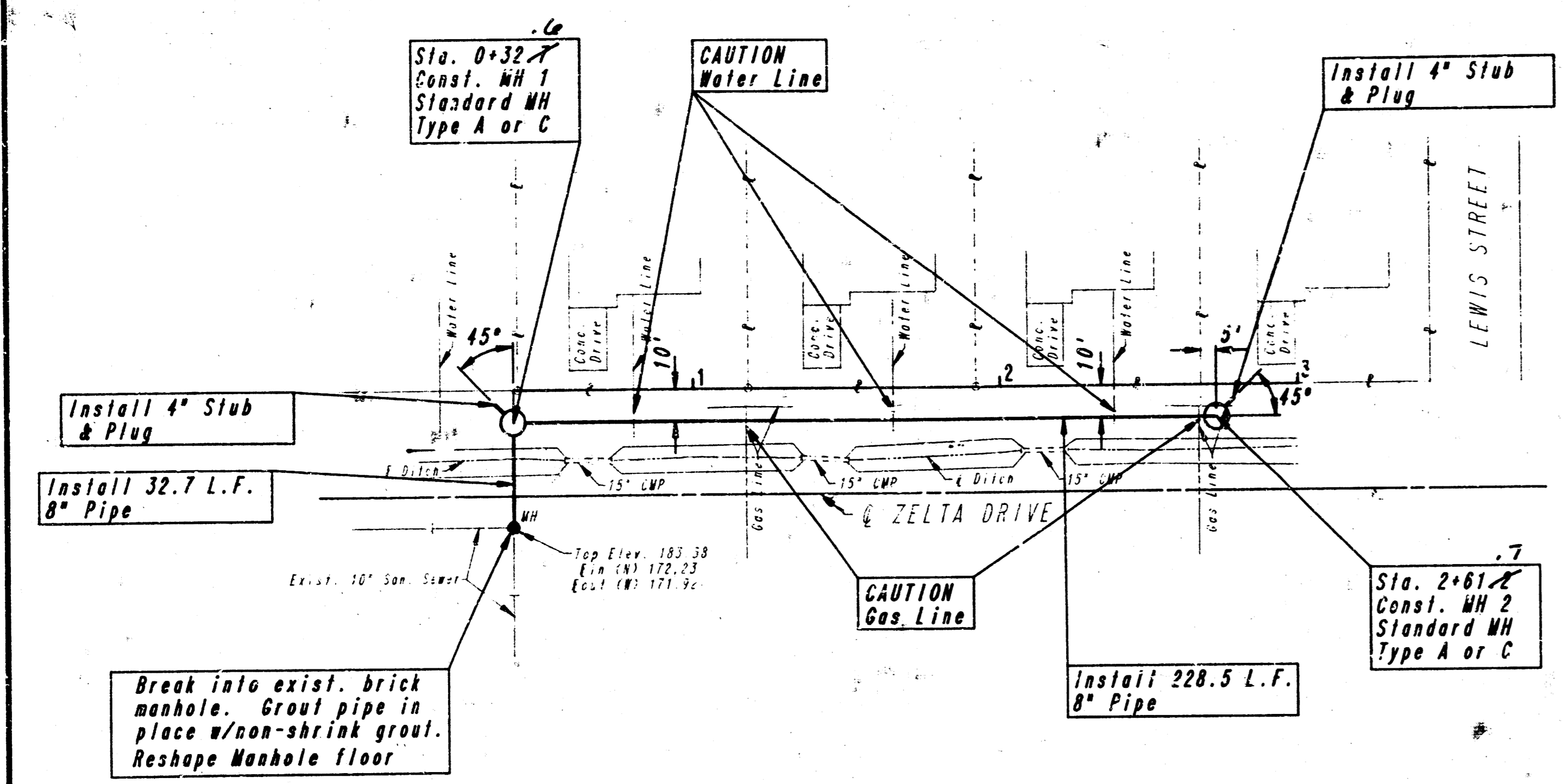
CONSTRUCTION PLANS FOR
LATERAL 17, MAIN 13
 OF THE
WAR INDUSTRIES SEWER
 THE CITY OF WICHITA,
 SEDGWICK COUNTY, KANSAS
 MICHAEL E. LINDBERK, P.E. CITY ENGINEER



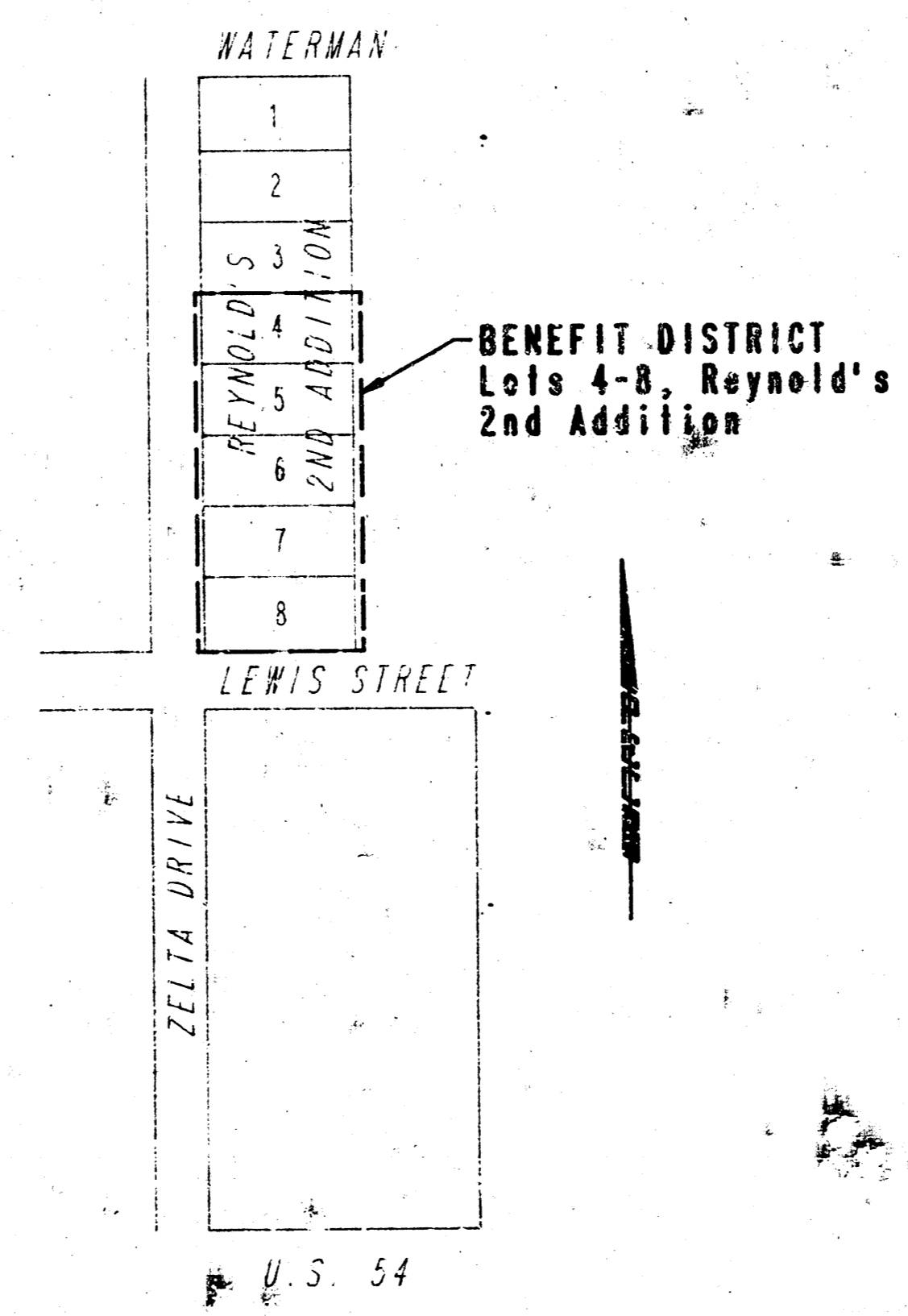
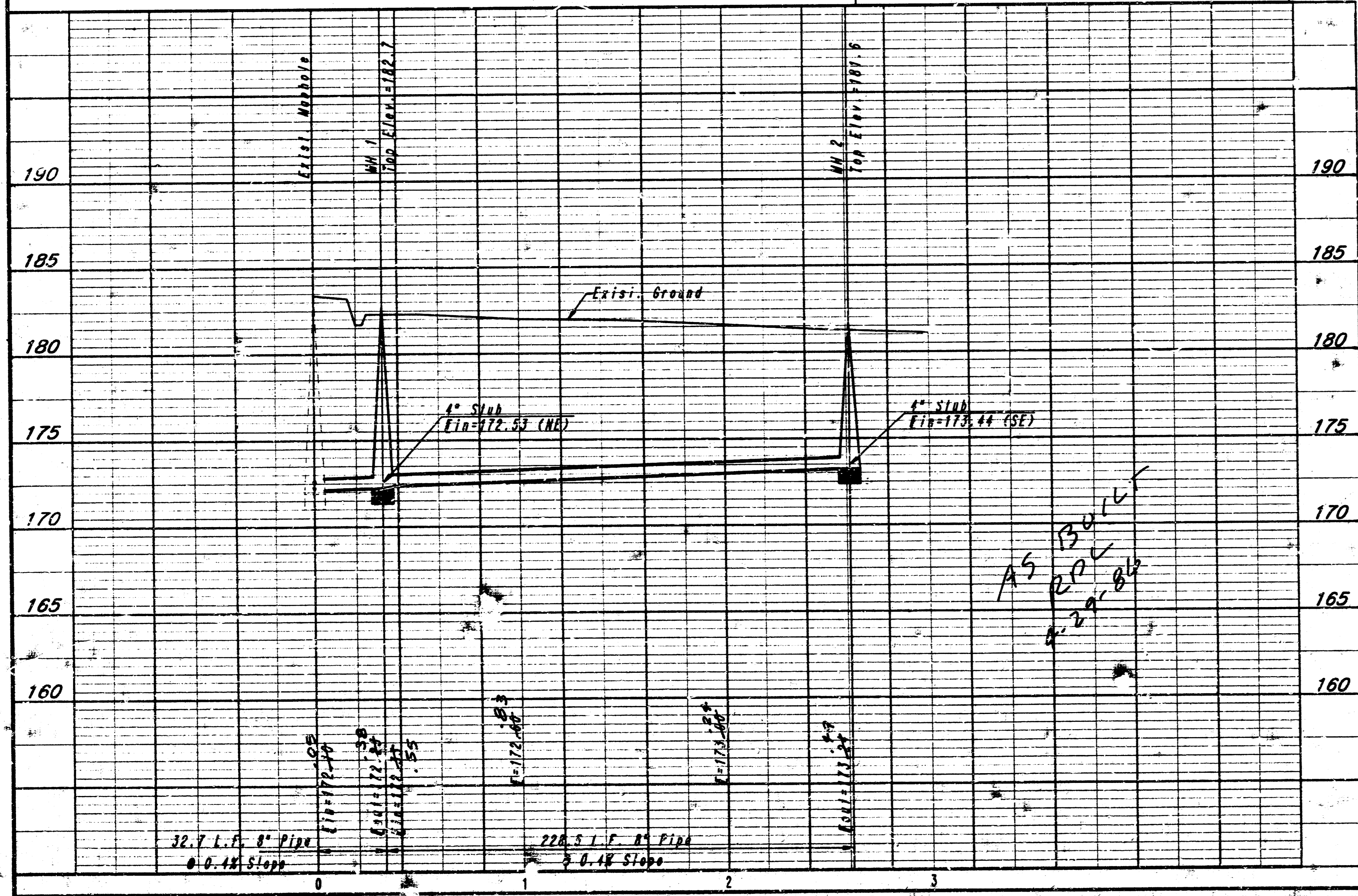
LOCATION MAP
 CITY OF WICHITA PROJECT NO. 468-76-245-81496-000-000-001
DECEMBER, 1985
 PLANS PREPARED BY
PROFESSIONAL ENGINEERING CONSULTANTS, P.A.
 ENGINEERS
 WICHITA, KANSAS

GENERAL NOTES

1. ALL CONSTRUCTION AND MATERIALS TO COMPLY WITH CITY OF WICHITA SPECIFICATIONS AND STANDARDS.
2. ALL ELEVATIONS SHOWN ARE CITY OF WICHITA DATUM (USGS-1187.4 - CITY DATUM).
3. THE CONTRACTOR SHALL LIMIT THE EXTENT OF TRENCH TO REMAIN OPEN OVERNIGHT AND WEEKENDS TO LESS THAN 50 FEET.
4. AT LEAST 48 HOURS PRIOR TO BEGINNING EXCAVATION, IF REQUIRED, (EXCLUDING WEEKENDS AND HOLIDAYS), THE CONTRACTOR SHALL CONTACT THE KANSAS ONE-CALL SYSTEM, A UTILITY LOCATION SERVICE, AT (316) 687-2470 TO REQUEST THE FOLLOWING UTILITY COMPANIES TO LOCATE ANY EXISTING LINES WITHIN THE PROJECT AREA: GAS SERVICE COMPANY, K.C.A.E., THE WICHITA WATER DEPARTMENT, AND AIR CAPITAL CABLEVISION.
5. THE CONTRACTOR MUST ALSO NOTIFY THE TELEPHONE COMPANY AT (313) 571-2115 48 HOURS PRIOR TO BEGINNING EXCAVATION AND REQUEST THAT ANY LINES WITHIN THE PROJECT AREA BE FLAGGED.
6. THE BURIED UTILITIES AS LOCATED ON THE PLANS ARE APPROXIMATE LOCATIONS ONLY. IT SHOULD BE NOTED THAT OTHER BURIED LINES AND CABLES MAY EXIST WHICH ARE NOT SHOWN ON THESE PLANS. THE CONTRACTOR SHALL EXERCISE EXTREME CAUTION DURING TRENCHING OPERATIONS TO AVOID DAMAGING THESE LINES. ANY LINES DAMAGED SHALL BE REPLACED OR REPAIRED IMMEDIATELY AS DIRECTED BY THE ENGINEER AT THE CONTRACTOR'S EXPENSE.
7. THE CONTRACTOR SHALL RESTORE ALL DITCHES, SWALES, ROAD SHOULDERS, ENTRANCES, AND BANK LINES TO THEIR ORIGINAL SLOPES. COST TO BE INCIDENTAL TO PROJECT.
8. THE CONTRACTOR SHALL BE RESPONSIBLE FOR PRESERVING PROPERTY IRONS. THE CONTRACTOR SHALL BE REQUIRED TO RE-ESTABLISH ANY PROPERTY IRONS WHICH ARE DAMAGED OR DESTROYED BY HIS CONSTRUCTION OPERATIONS. SUCH IRONS SHALL BE RE-ESTABLISHED BY A LICENSED LAND SURVEYOR OR A LICENSED PROFESSIONAL ENGINEER IN ACCORDANCE WITH STATE LAWS. ALL COSTS FOR THIS WORK SHALL BE SUBSIDIARY TO THE OTHER ITEMS OF WORK.
9. CONTRACTOR SHALL PROVIDE POSITIVE DRAINAGE AWAY FROM ALL MANHOLE COVERS.



B.M. CITY OF WICHITA BENCH MARK DISC, 75' WEST AND 8' NORTH OF QUARTER SECTION CORNER @ ZELTA DRIVE & KELLOGG ELEV. 174.699 (CITY DATUM)
 B.M. CITY OF WICHITA BENCH MARK DISC, 32' WEST AND 38' NORTH OF CENTERLINE OF ZELTA DRIVE & DOUGLAS ELEV. 169.889 (CITY DATUM)



	No.	Revision	By	Date
	CITY OF WICHITA, KANSAS LATERAL 17, MAIN 13 OF THE WAR INDUSTRIES SEWER MICHAEL E. LINDBERK P.E. CITY ENGINEER CITY OF WICHITA PROJECT NO. 468-76-245-81496-000-000-001 PROFESSIONAL ENGINEERING CONSULTANTS, P.A. ENGINEERS WICHITA, KANSAS			
	Designed by	MDS	Job No.	34-85856
	Drawn by	CAL	Date	December, 1985

Sh. 1 of 1

FILMED FROM THE BEST AVAILABLE COPY