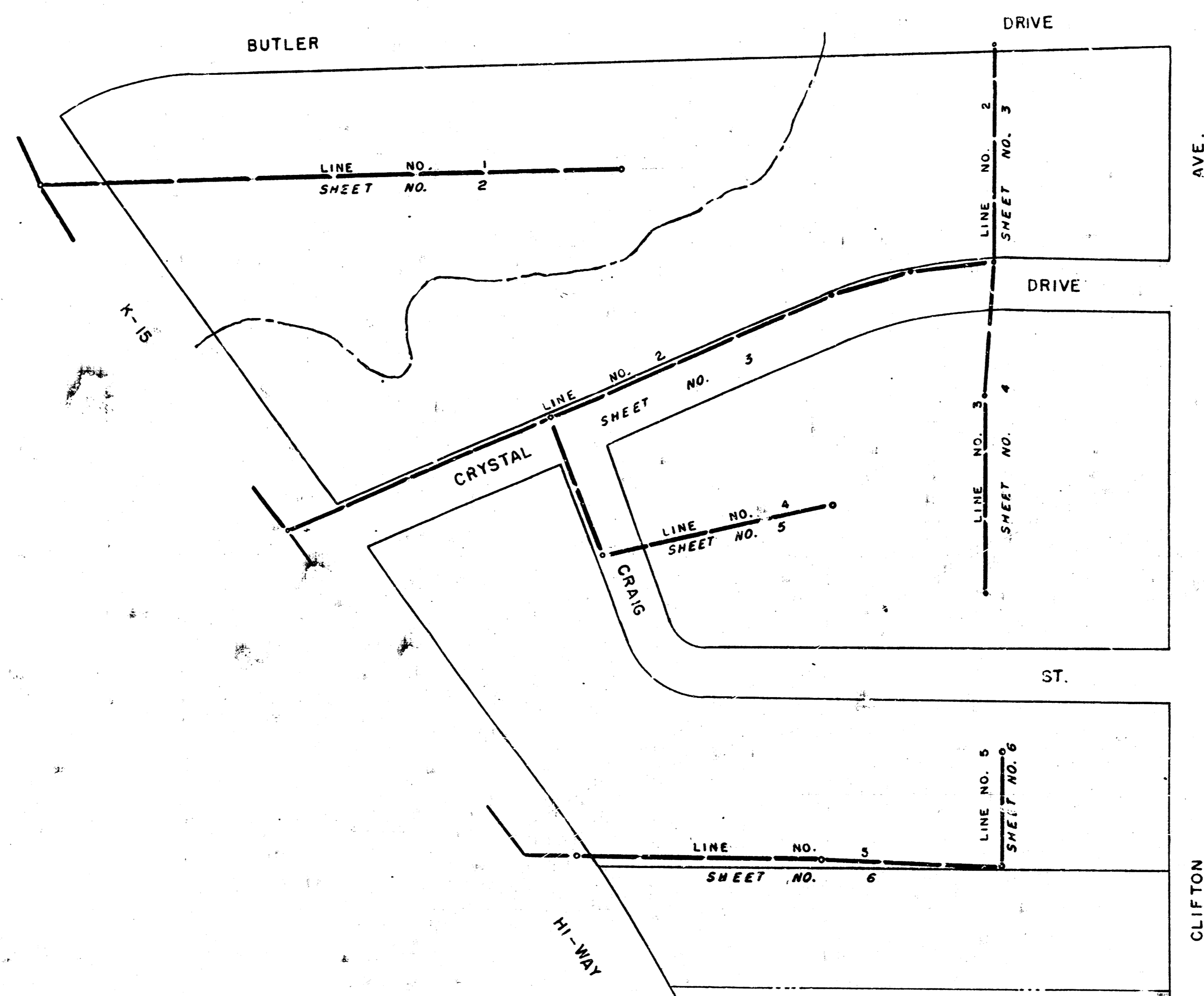


PLAN AND PROFILE FOR
LAT. I, SUBMAIN 14, WAR INDUSTRIES SEWER
CITY OF WICHITA, KANSAS

B. E. SMITH — CITY ENGINEER
PROJECT NO. C23-25

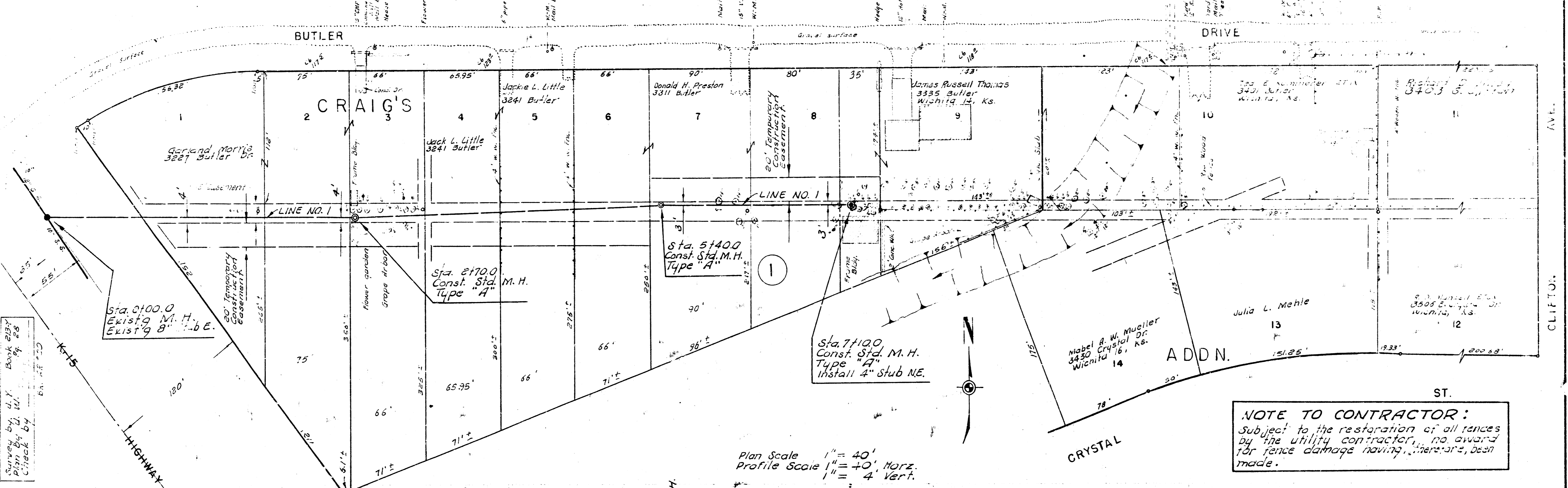


NOTE TO CONTRACTOR:
This project is to be co-ordinated
with sub 14, W. I. S. project
No C 23-24.



LAT. I, SUBMAIN 14, W. I. S.
PROJECT NO. C23-25
SHEET NO. 1 OF 6

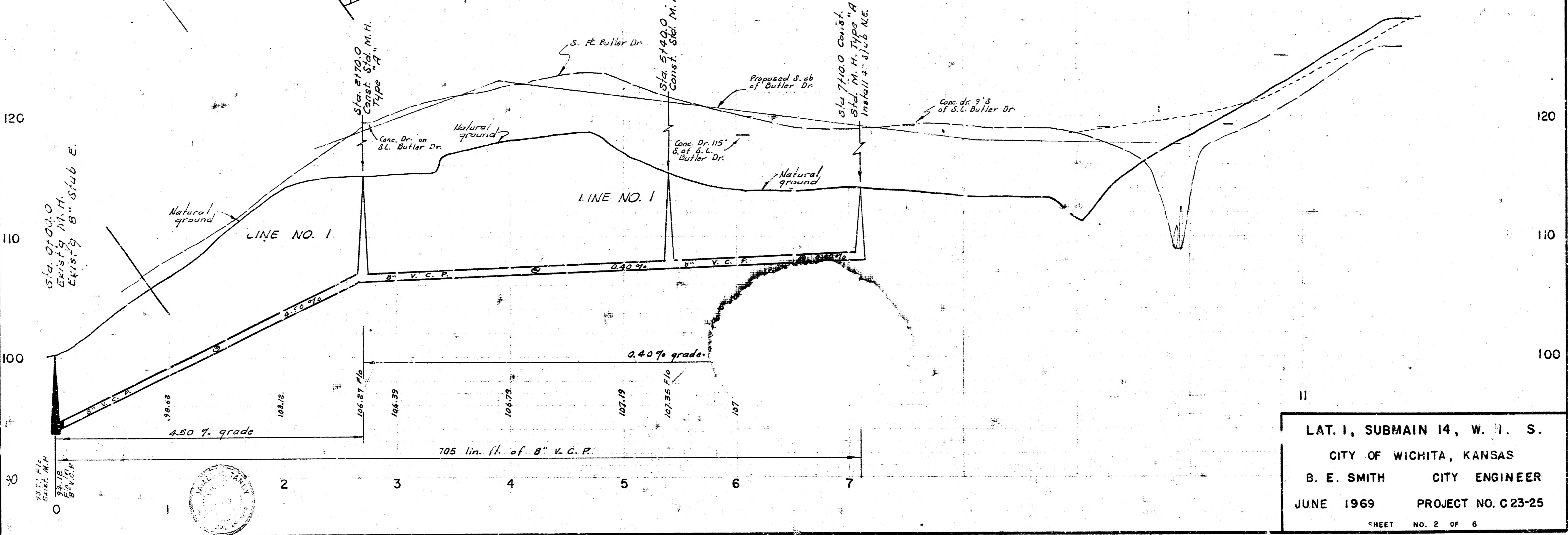
S. 1/4 93.97 R. R. Spike S. S. 10" Tree 50' N. of Butler ES K-15.
 S. 1/4 26.45 3rd S. N. 10' FR. 50' Butler & 220' W. of W. Clifton Ave.



Survey by G. L. Smith
 Plan by G. L. Smith
 Check by G. L. Smith

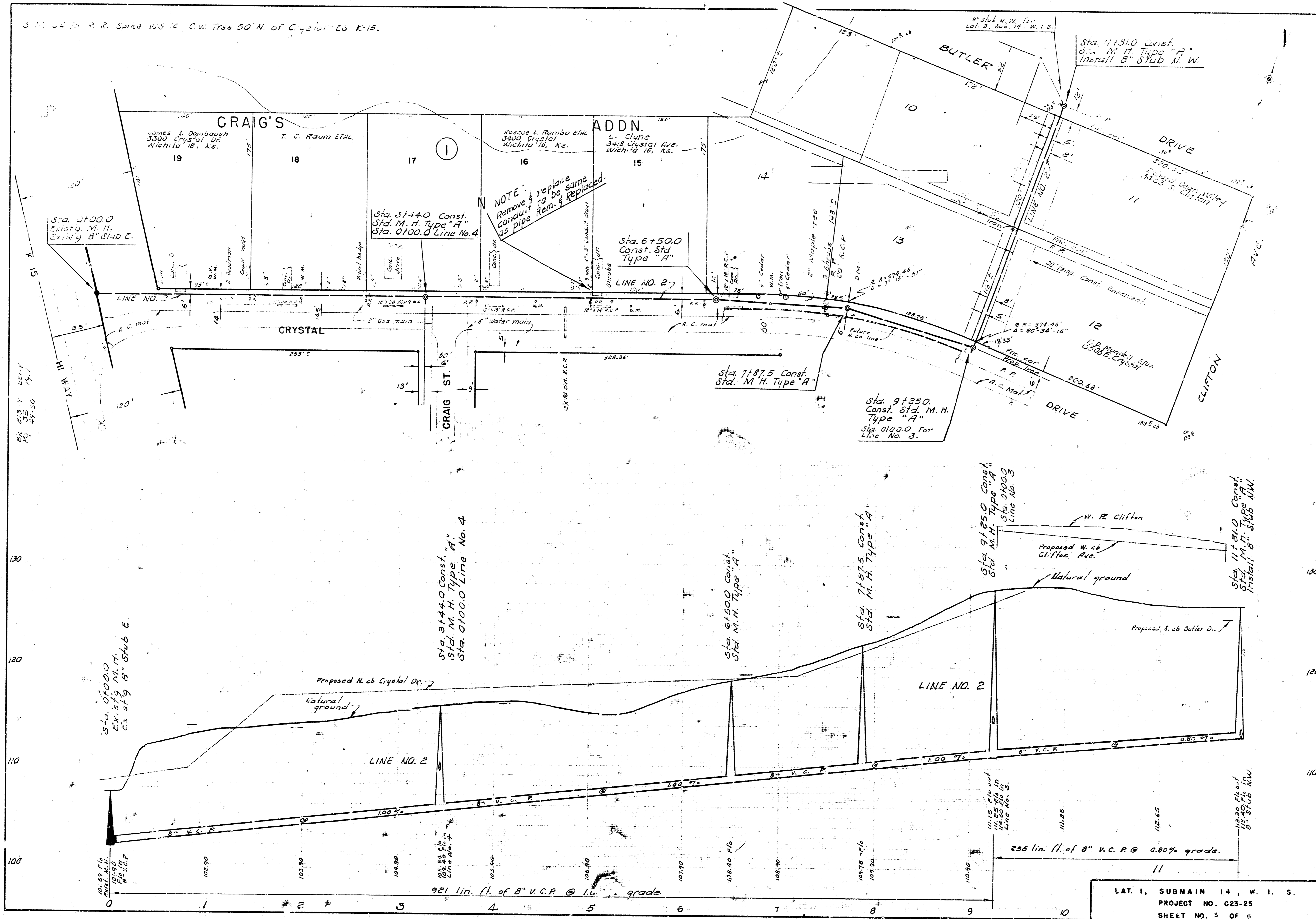
NOTE TO CONTRACTOR:
 Subject to the restoration of all fences
 by the utility contractor, no award
 for fence damage having, here and, been
 made.

Plan Scale 1" = 40'
 Profile Scale 1" = 4' Vert.

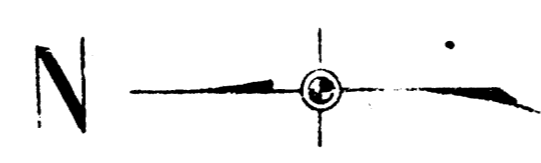
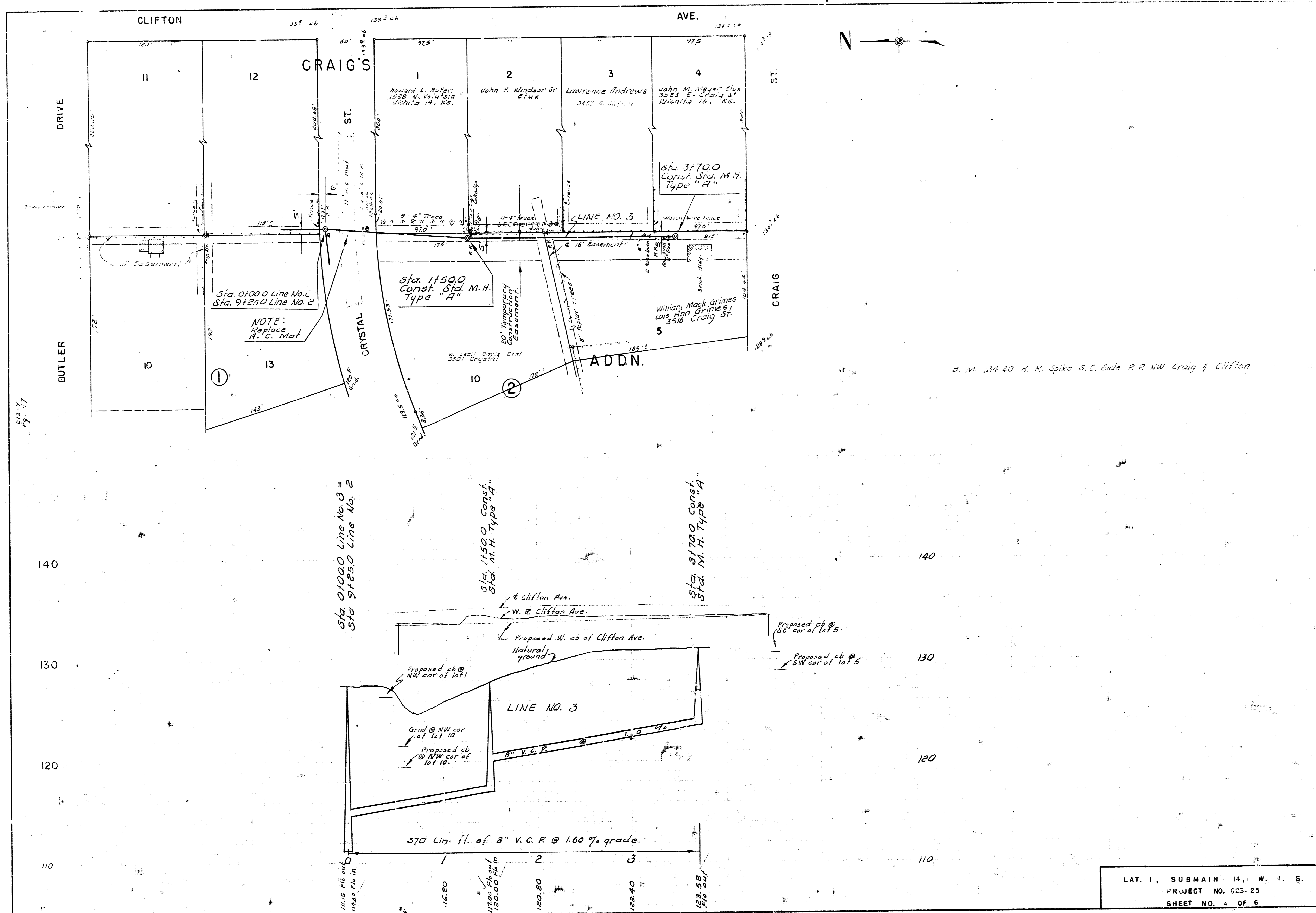


LAT. I, SUBMAIN 14, W. I. S.
 CITY OF WICHITA, KANSAS
 B. E. SMITH CITY ENGINEER
 JUNE 1969 PROJECT NO. C23-25
 SHEET NO. 2 OF 6

3. N. 1/4 Sec. 14, R. 14 E., T. 15 N., S. 15 E. C. 15. 50' N. of Crystal - Es. K-15.

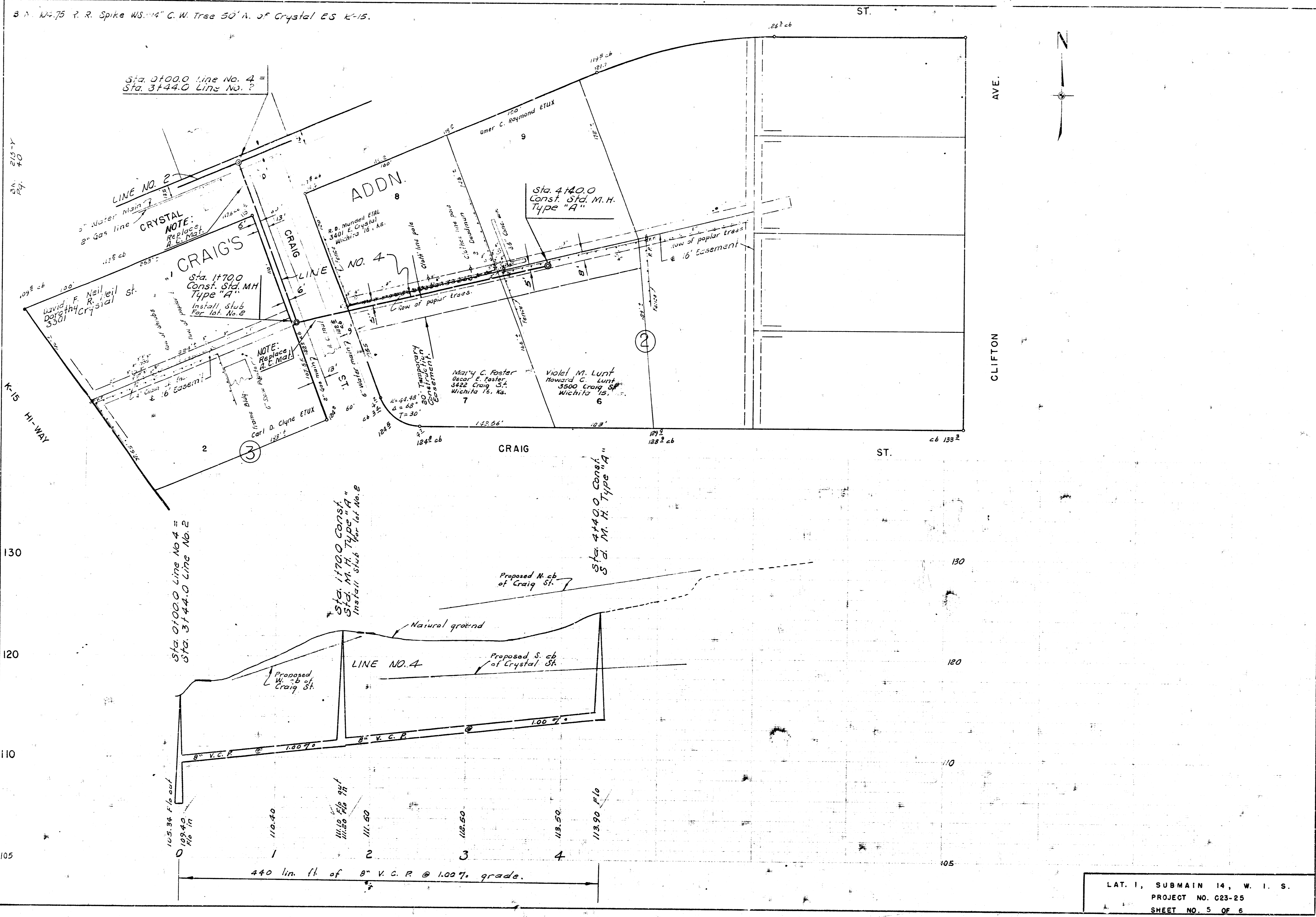


LAT. 1, SUBMAIN 14, W. I. S.
 PROJECT NO. C23-25
 SHEET NO. 3 OF 6



B. M. 3440 R. R. Spike S.E. Side P.R. NW Craig & Clifton.

LAT. 1, SUBMAIN 14, W. 4. S.
 PROJECT NO. 623-25
 SHEET NO. 4 OF 6



B.M. 124.75 P. R. Spike W.S. 114" C.W. Tree 50' N. of Crystal ES K-15.

B.M. 213.74
4.0

K-15
HI-WAY

130

120

110

105

Sta. 0+00.0 Line No. 4 =
Sta. 3+44.0 Line No. 2

CRYSTAL
NOTE:
Replace
H.C. Man.

CRAG'S
Sta. 1+70.0
Const. Std. M.H.
Type "A"
Install stub
for lat. No. 2

NOTE:
Replace
H.C. Man.

ADDN.

Sta. 4+40.0
Const. Std. M.H.
Type "A"

Mary C. Foster
Oscar E. Foster
4422 Craig St.
Wichita 16, Ks.

Violet M. Lunt
Howard C. Lunt
3500 Craig St.
Wichita 16, Ks.

Sta. 0+00.0 Line No. 4 =
Sta. 3+44.0 Line No. 2

Sta. 1+70.0 Const.
Std. M.H. Type "A"
Install stub for lat. No. 2

Sta. 4+40.0 Const.
Std. M.H. Type "A"

Proposed W. cb
of Craig St.

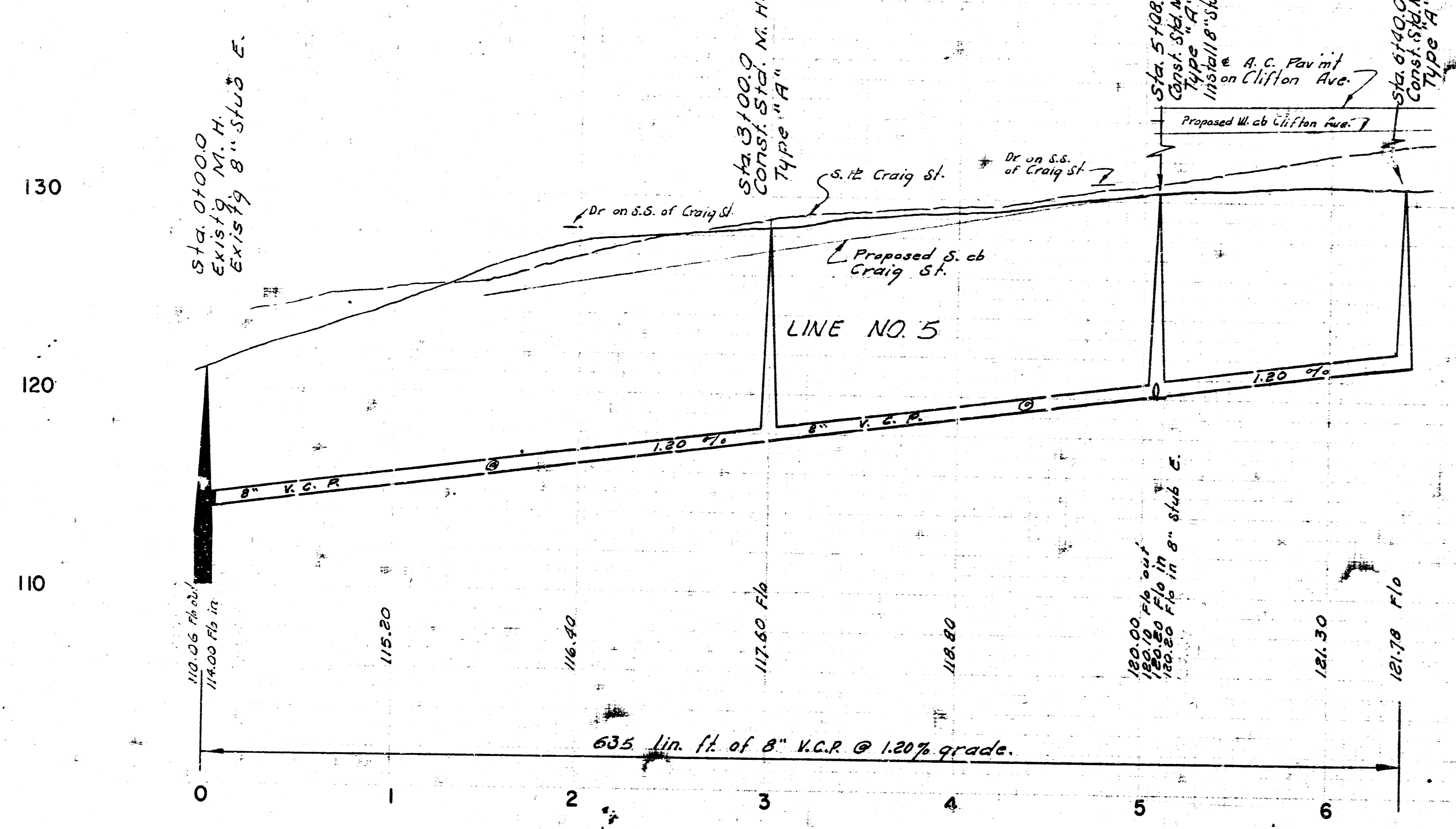
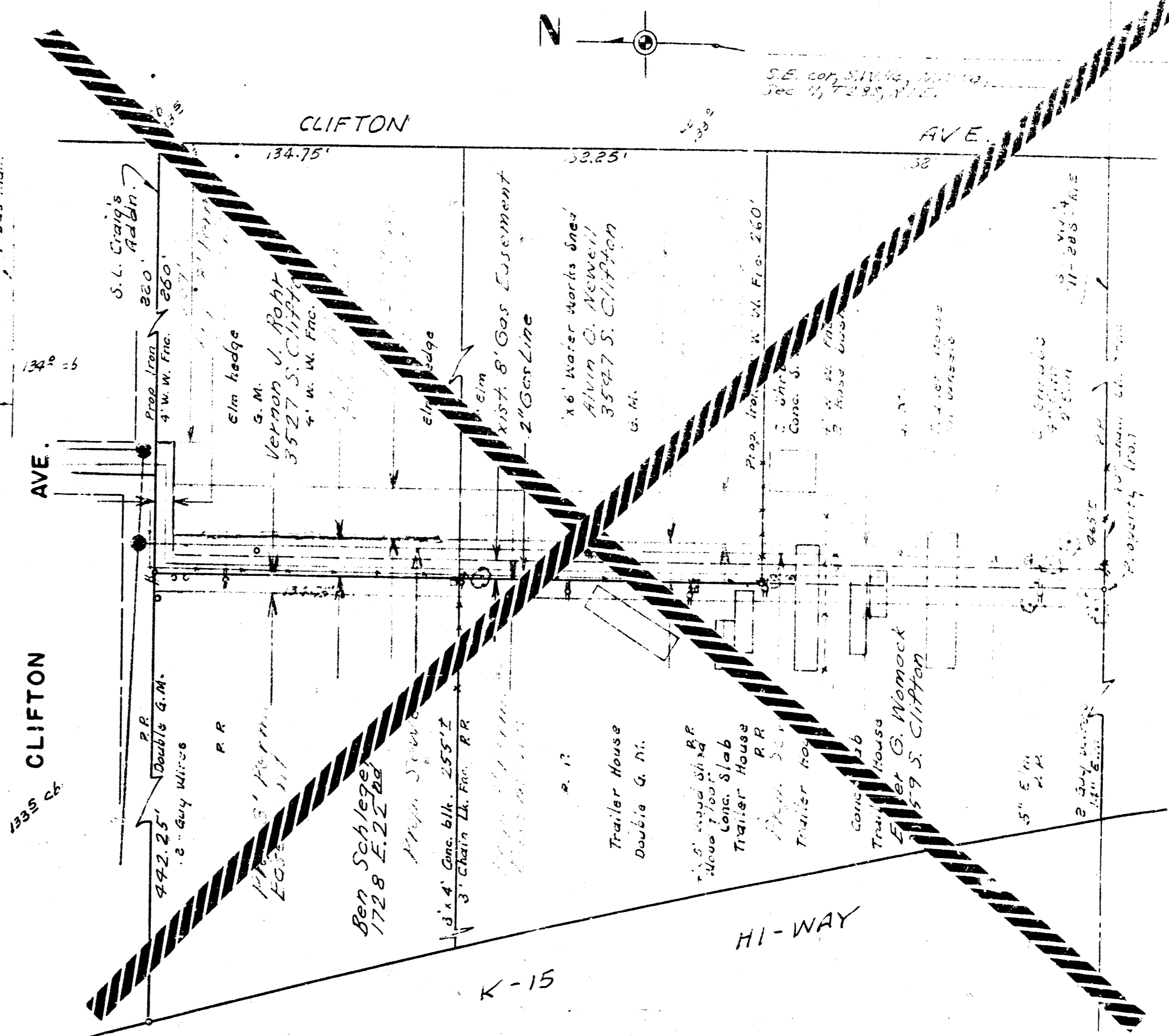
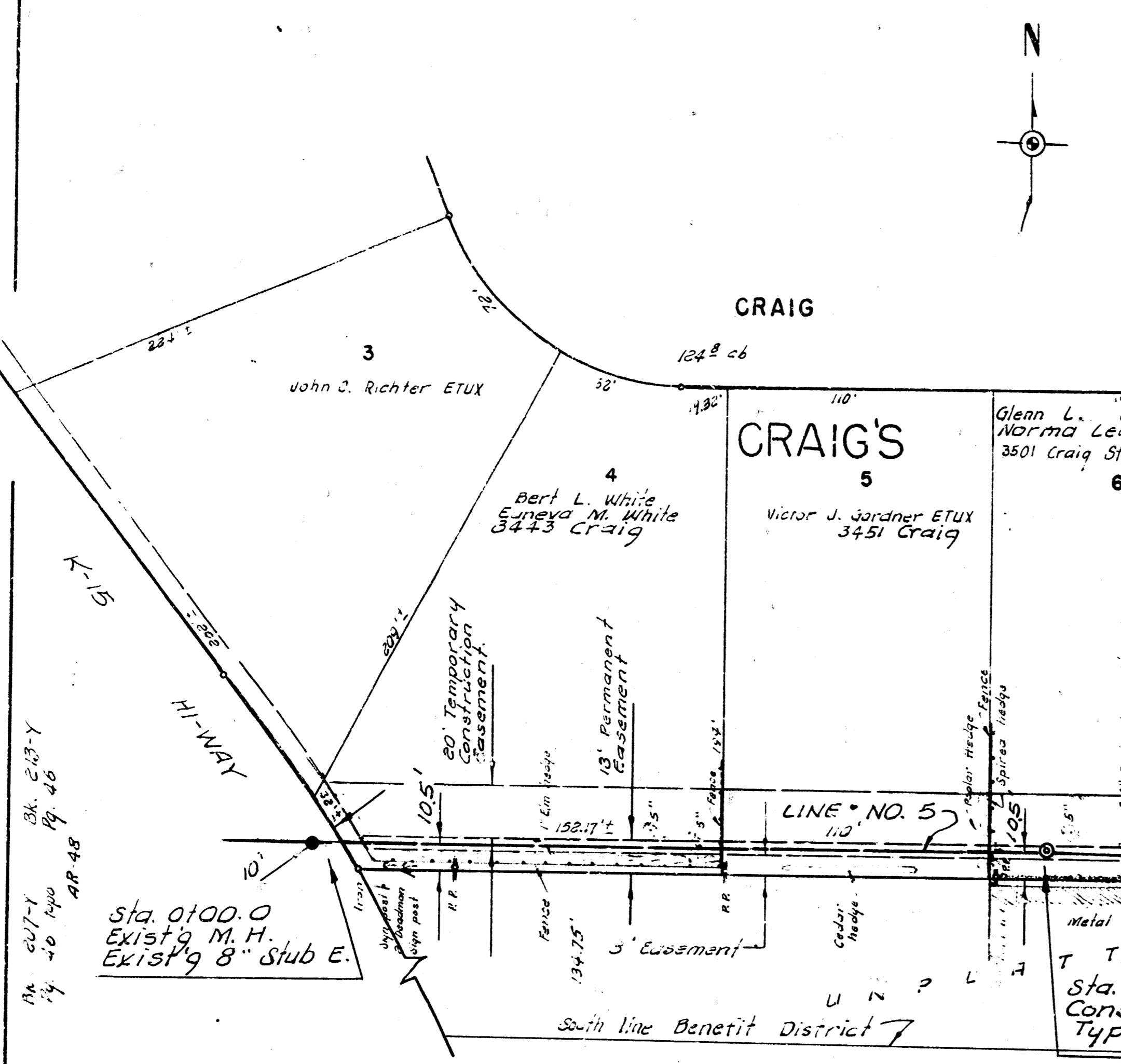
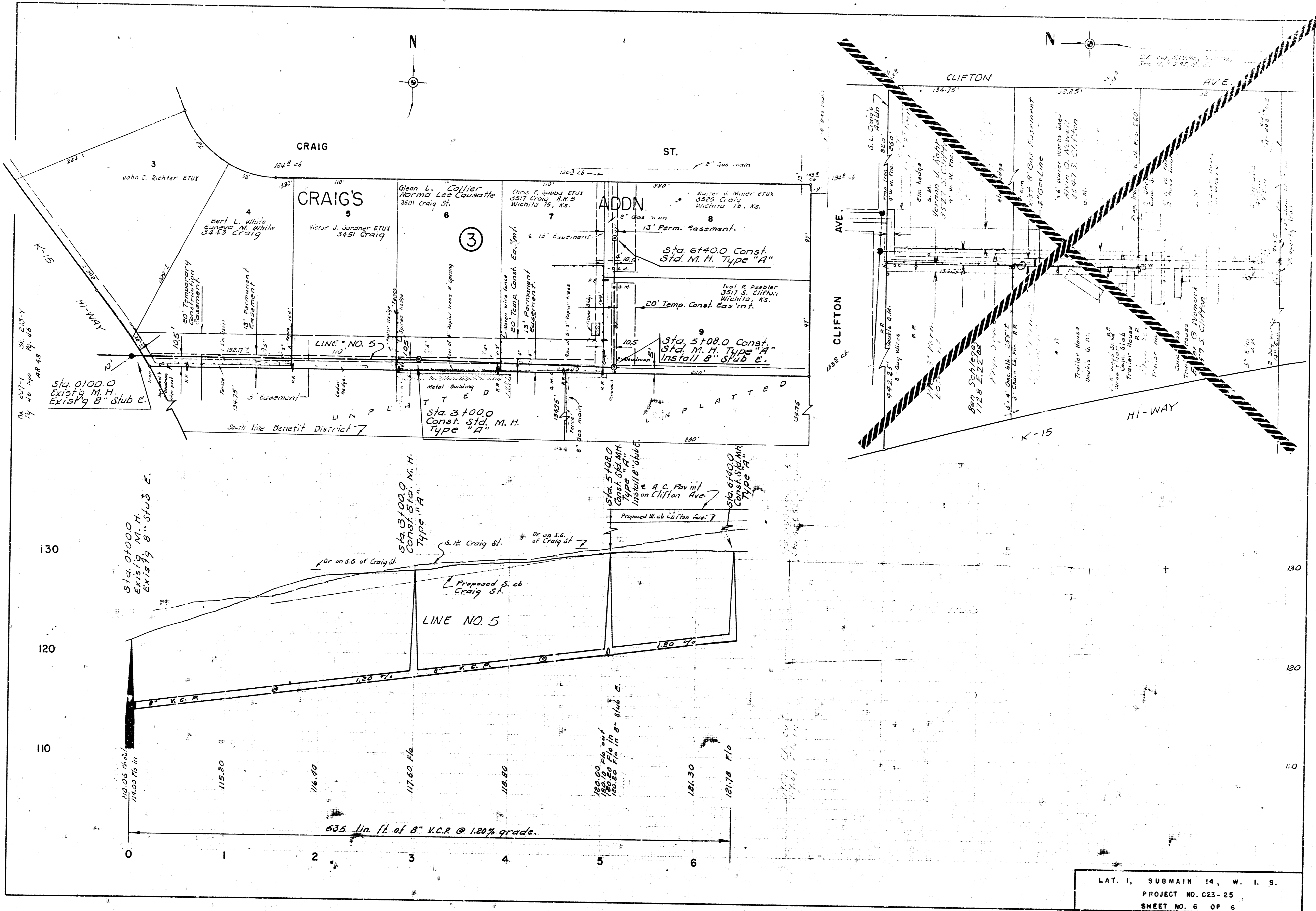
Proposed N. cb
of Craig St.

Proposed S. cb
of Crystal St.

105.84
109.40
110.40
110.80
111.60
112.50
113.50
113.90

440 lin. ft. of 8" V.C.R. @ 1.00% grade.

LAT. 1, SUBMAIN 14, W. I. S.
PROJECT NO. C23-25
SHEET NO. 5 OF 6



LAT. I, SUBMAIN 14, W. I. S.
 PROJECT NO. C23-25
 SHEET NO. 6 OF 6