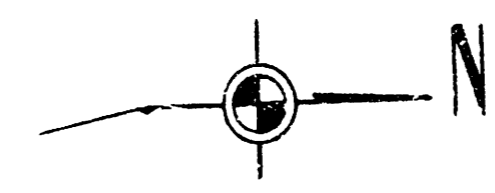
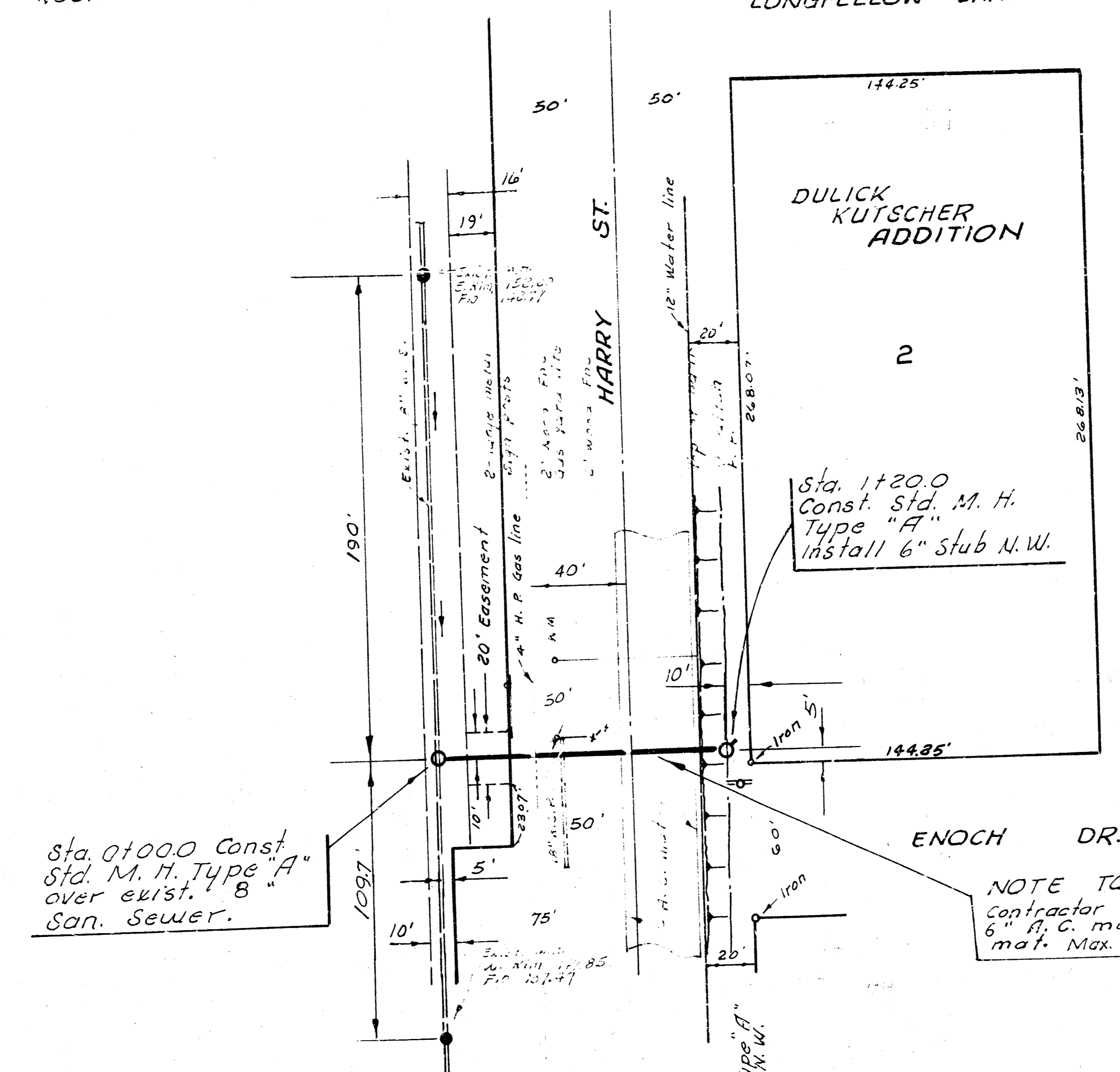


B.M. 145.38 + on N.W. cor.
N. Honorail R.C.B.C.
on Harry 238' E. of
Rock Rd.



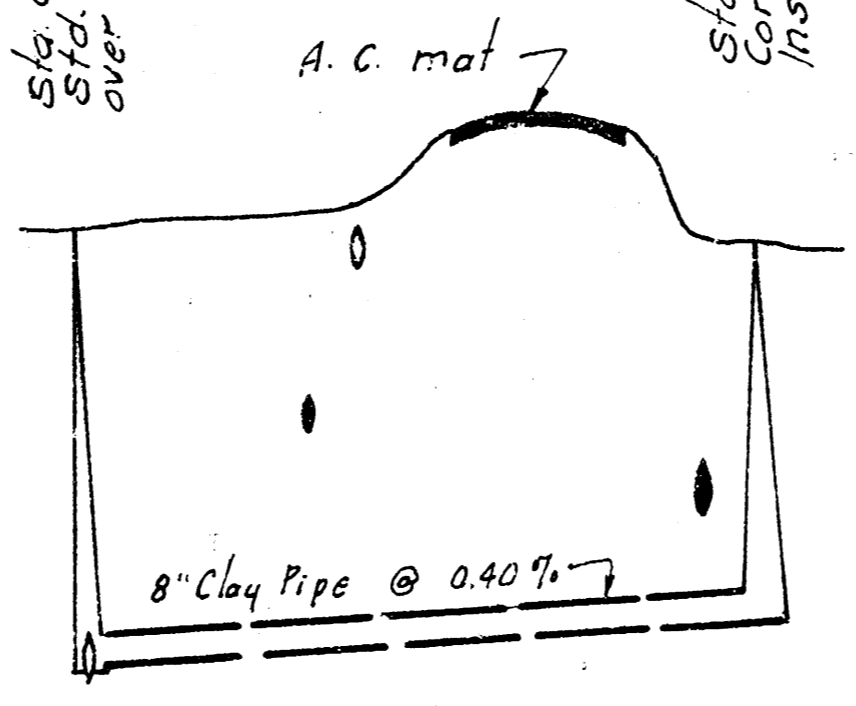
Plan Scale 1" = 40'
Profile Scale 1" = 40' Horz.
1" = 5' Vert.



Sta. 01000 Const
Std. M. H. Type "A"
over exist. 8"
San. Sewer.

NOTE TO CONTRACTOR:
Contractor is to repair exist. A.C. mat with
6" A.C. mat or with thickness of exist.
mat. Max. time Harry St. may be closed 9:00 AM to 4:00 PM

150
145
140
135



139.50 calc. Fl. exist. 8"
139.60 Fl. 17"
140.00
140.08

120 lin. ft. of
8" clay pipe
@ 0.40% grade



LAT. 5, MAIN 16, WAR INDUSTRIES SEWER
CITY OF WICHITA, KANSAS
R. W. LINN - CITY ENGINEER
NOV. 1971 PROJECT NO. DBKL 5 710 39