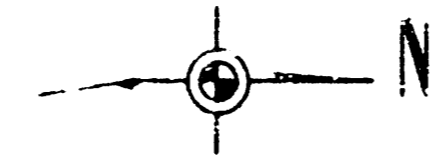
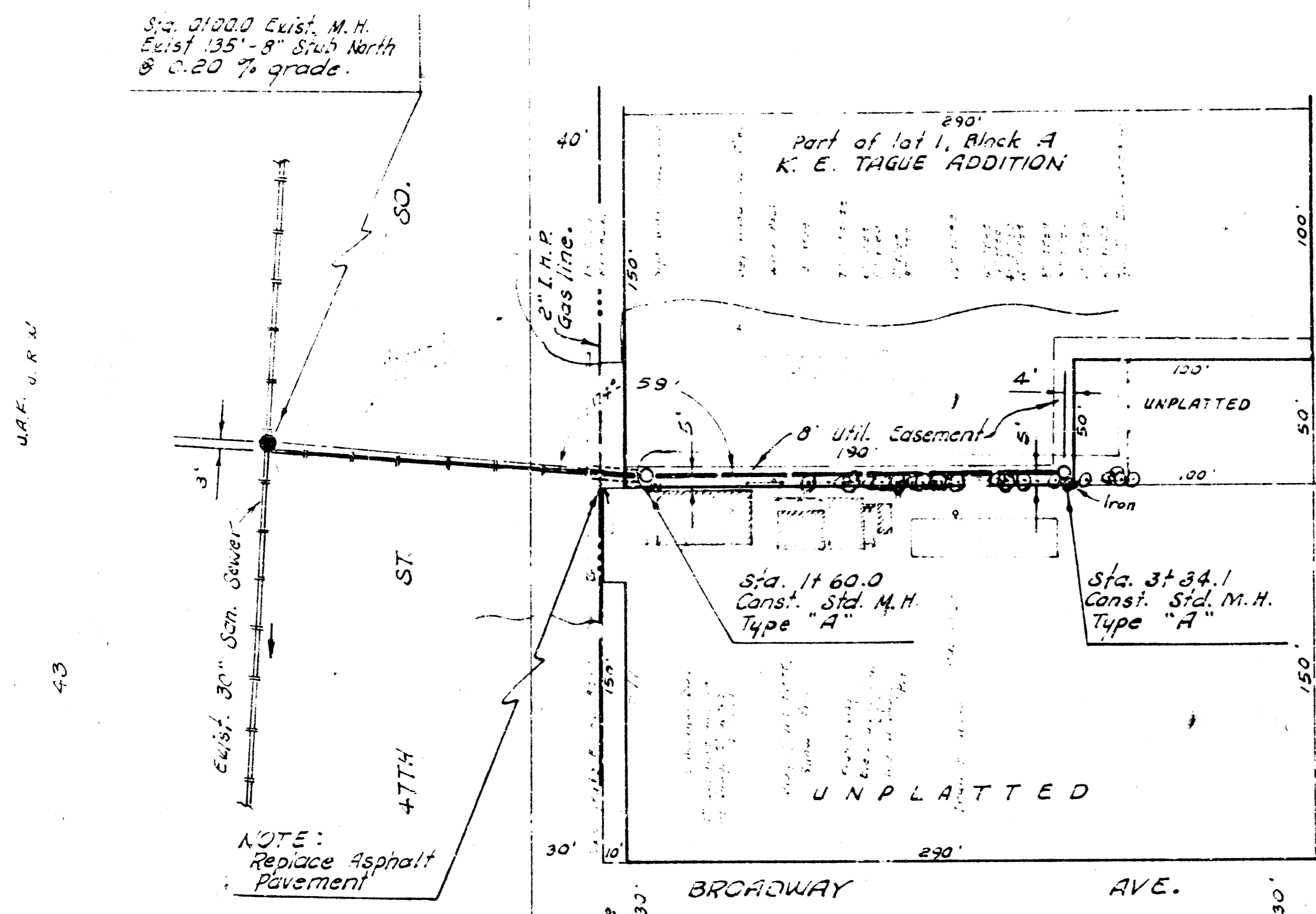


3 M. 86.90 "F" cut in S.W. cor. conc. Pd. Auto Parts Store.



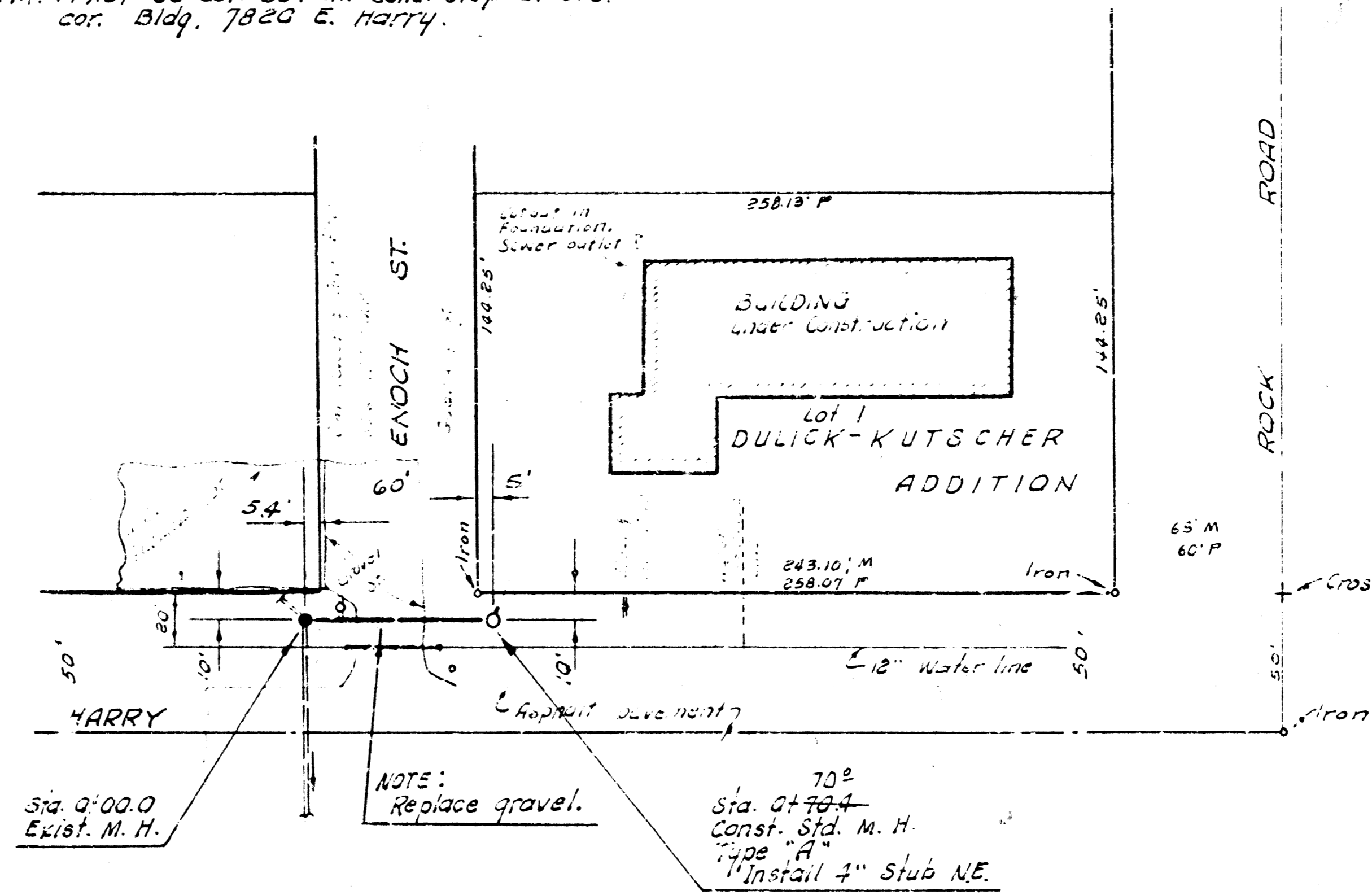
Plan Scale 1"=40'
Profile Scale 1"=5' Vert.

NOTE TO FIELD ENGINEER AND CONTRACTOR
All sand backfill for this project shall be placed in the project, per linear foot of clay pipe, and shall include the cost of sand, planning, testing and vibrating and all necessary tools and labor to complete the backfill.

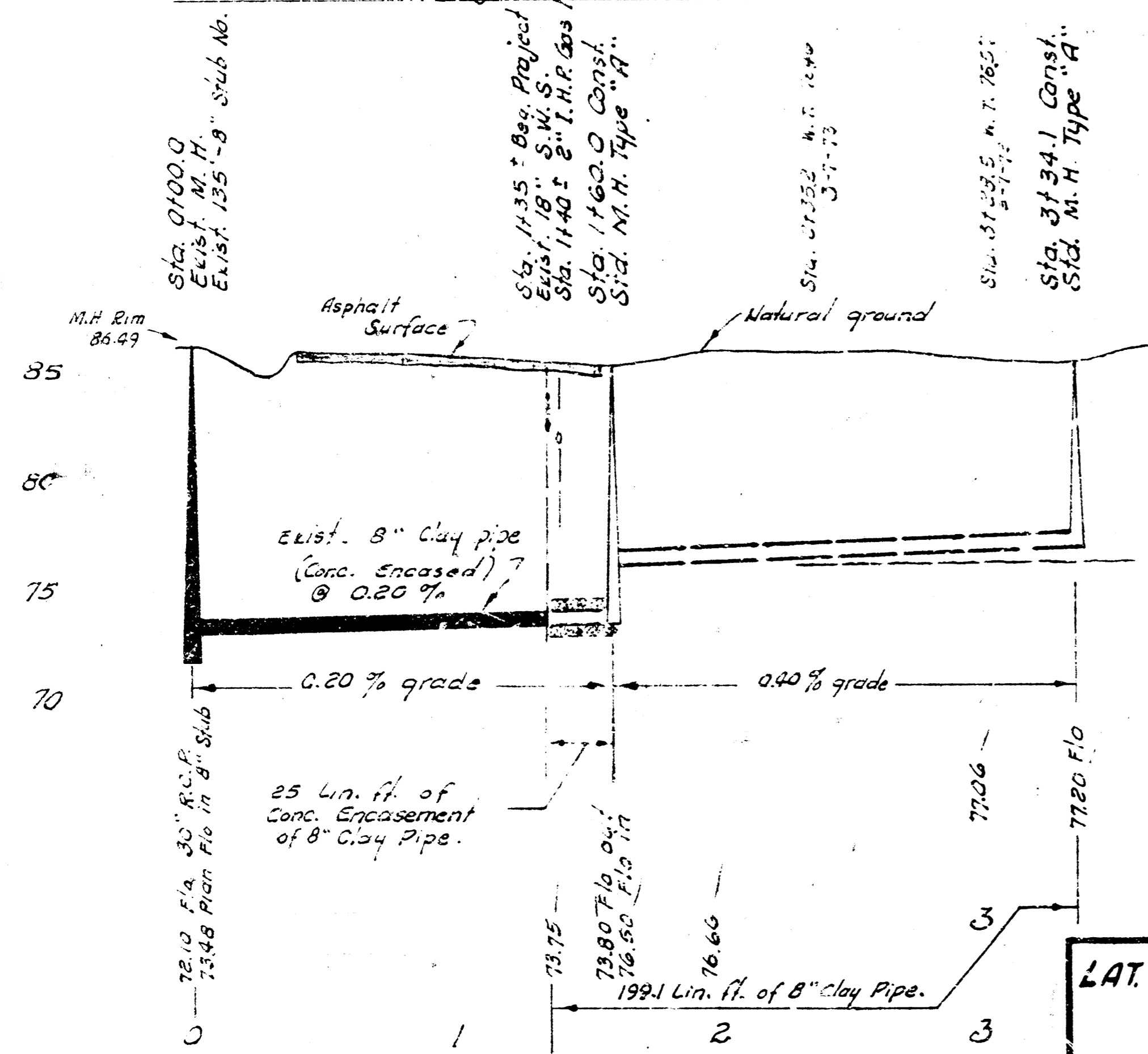


B. M. 145.38 "F" top W-End Handrail
R. C. B. C. on Harry 238' E. of Rock Rd.
B. M. 145.79 "M" in Mueller Fire Hydrant N.W.
cor. Rock Rd. & Harry.
B. M. 149.87 SE cor. bottom conc. Step at S.E.
cor. Bldg. 7820 E. Harry.

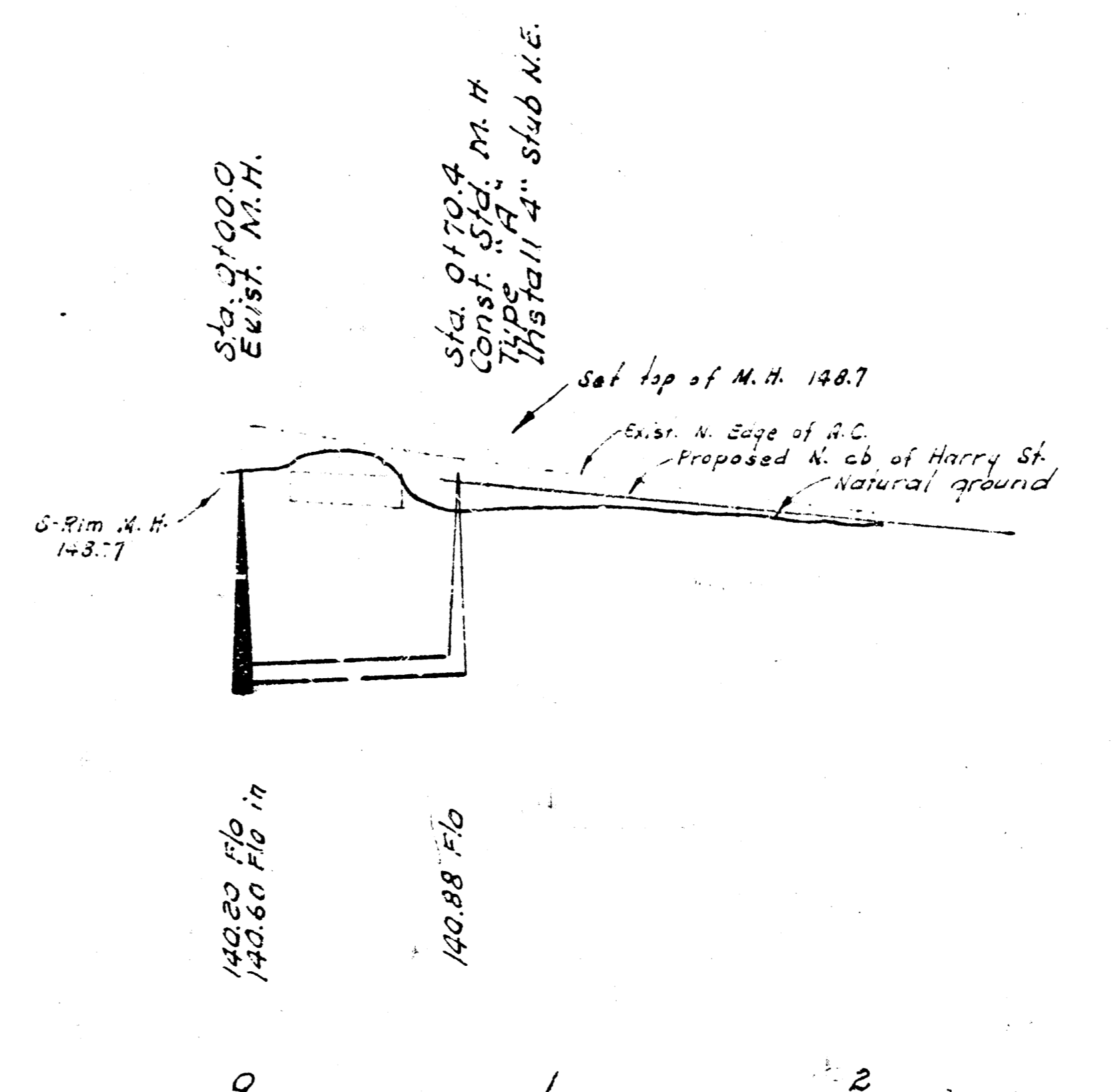
Survey by D.L.K. BK. D.L.K. 123
Plan by U. R. W.
Checked by



Plan Scale 1"=40'
Profile Scale 1"=5' Vert.



LAT. 7, MAIN 2, S.W. INTERCEPTOR SEWER
CITY OF WICHITA, KANSAS
R. W. LINN - CITY ENGINEER
APRIL 1973 PROJECT NO. DBK L 512081



LAT. 8, MAIN 16, WAR INDUSTRIES SEWER
CITY OF WICHITA, KANSAS
R. W. LINN - CITY ENGINEER
FEB. 1973. PROJECT NO. DBK L 5 72077

As Built Final Measurements 2174