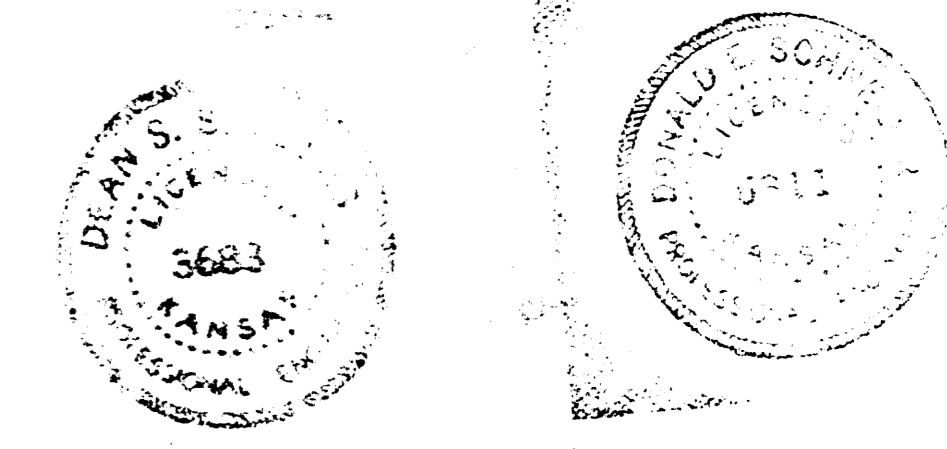
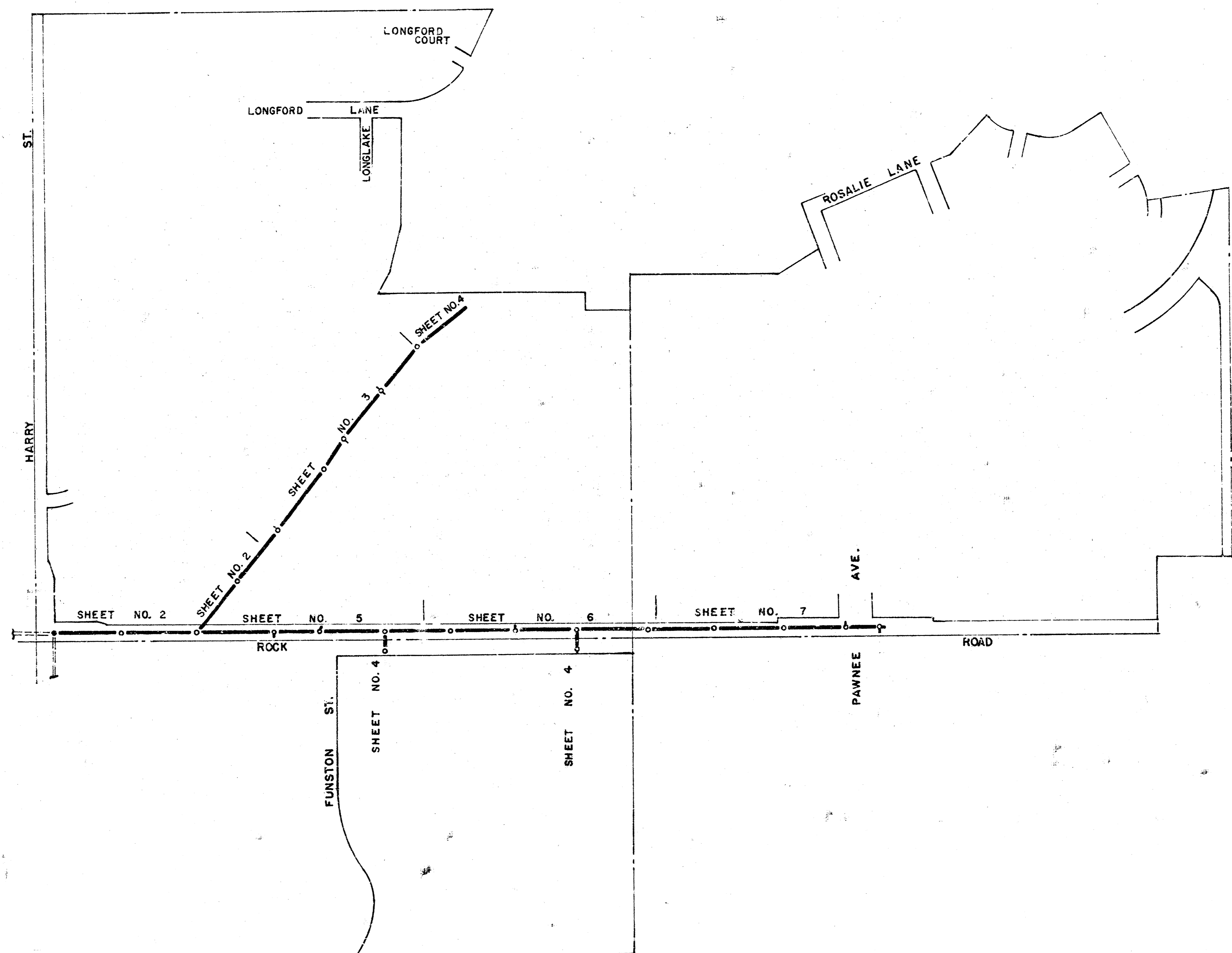
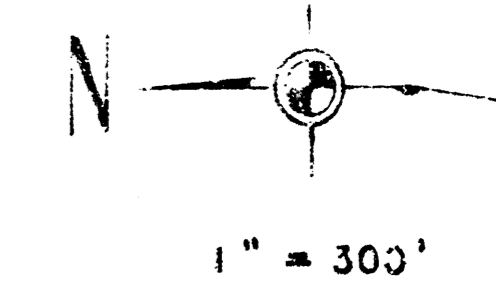
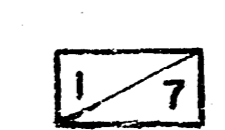


MAIN 17, WAR INDUSTRIES SEWER  
CITY OF WICHITA, KANSAS  
R. W. LINN - CITY ENGINEER  
JULY 1973, PROJECT NO. DBKM 573034

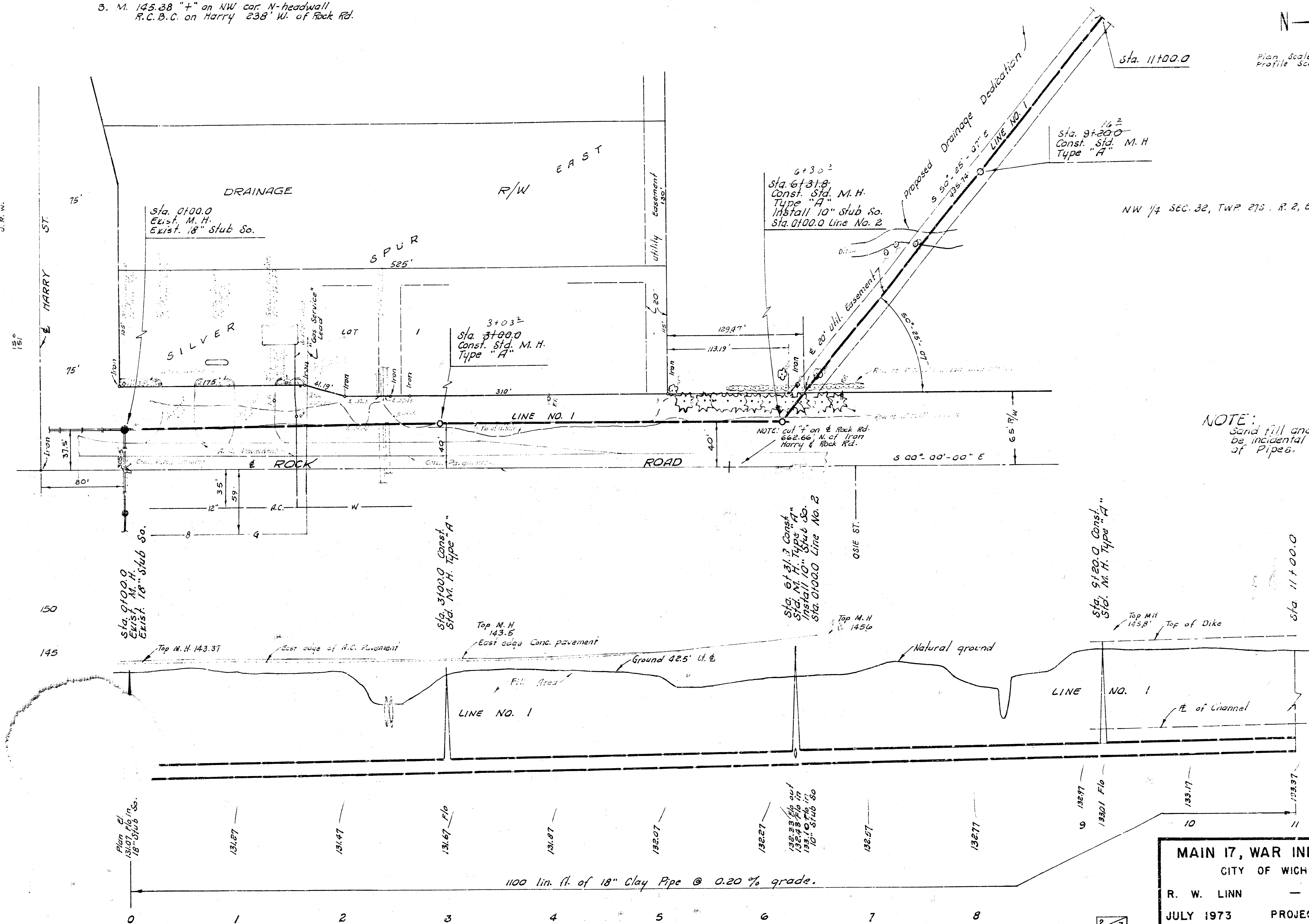


*As Built* Final Meas. 280-9  
MAIN 17, WAR INDUSTRIES SEWER  
PROJECT NO. DBK M573034



B. M. 145.38 "+" on NW cor. N-headwall  
R.C.B.C. on Harry 238' W. of Rock Rd.

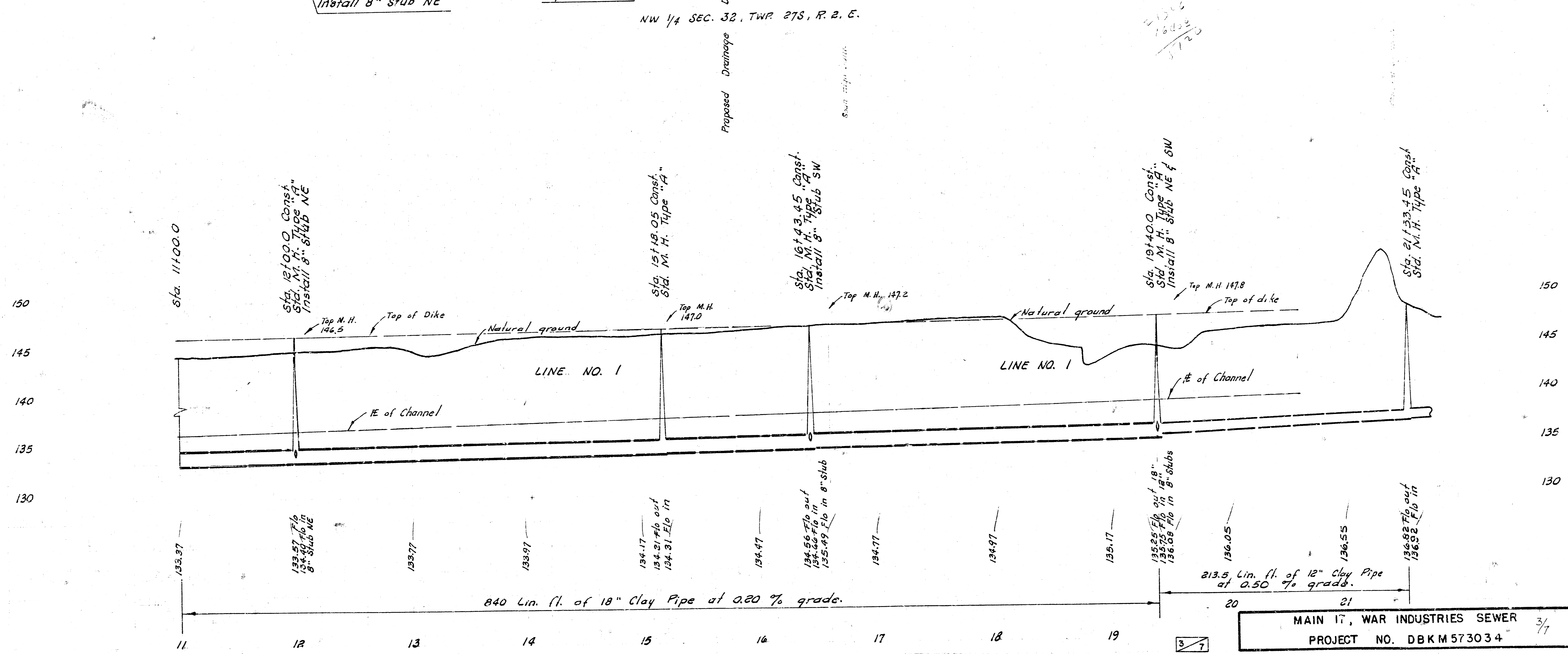
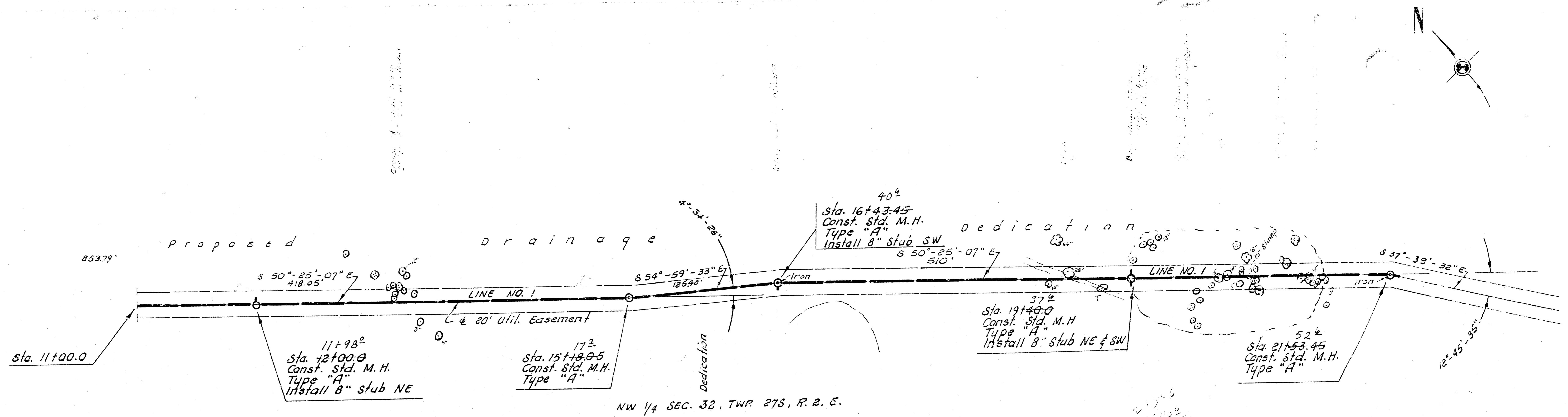
Plan Scale 1" = 40' Horiz.  
Profile Scale 1" = 40' Vert.



NW 1/4 SEC. 32, TWP. 27S., R. 2, E.

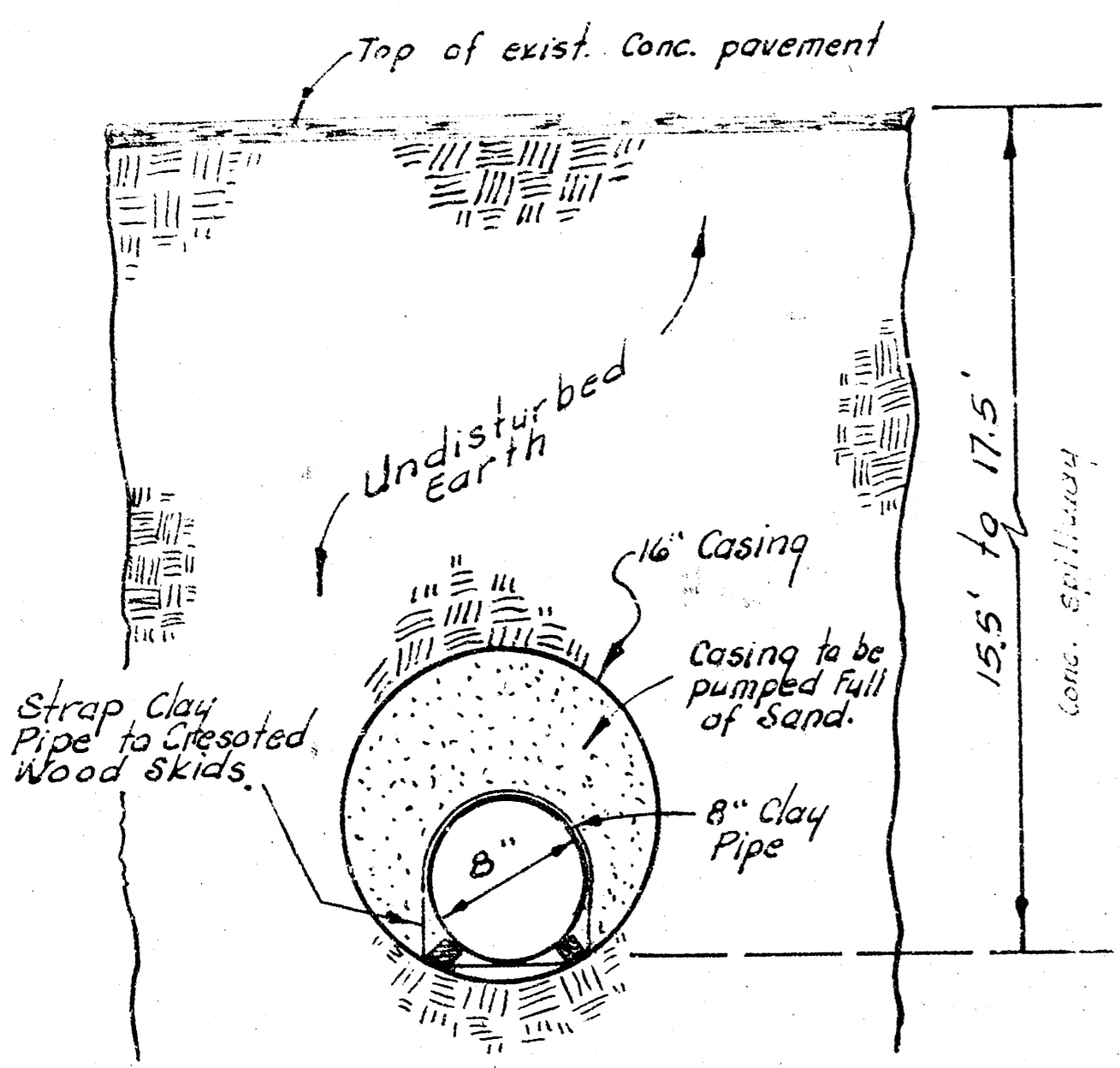
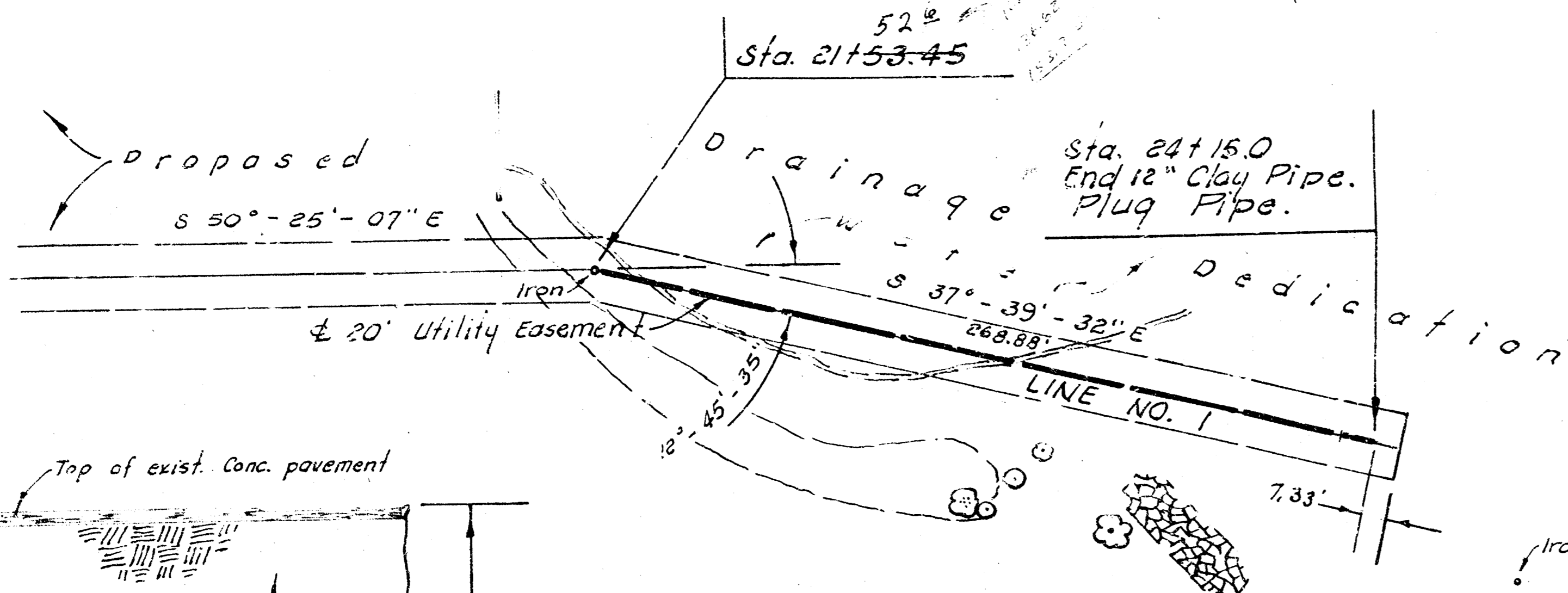
NOTE:  
Sand fill and flushing is to  
be incidental to bid price  
of pipes.

**MAIN 17, WAR INDUSTRIES SEWER**  
CITY OF WICHITA, KANSAS  
R. W. LINN — CITY ENGINEER  
JULY 1973 PROJECT NO. DBKM573034



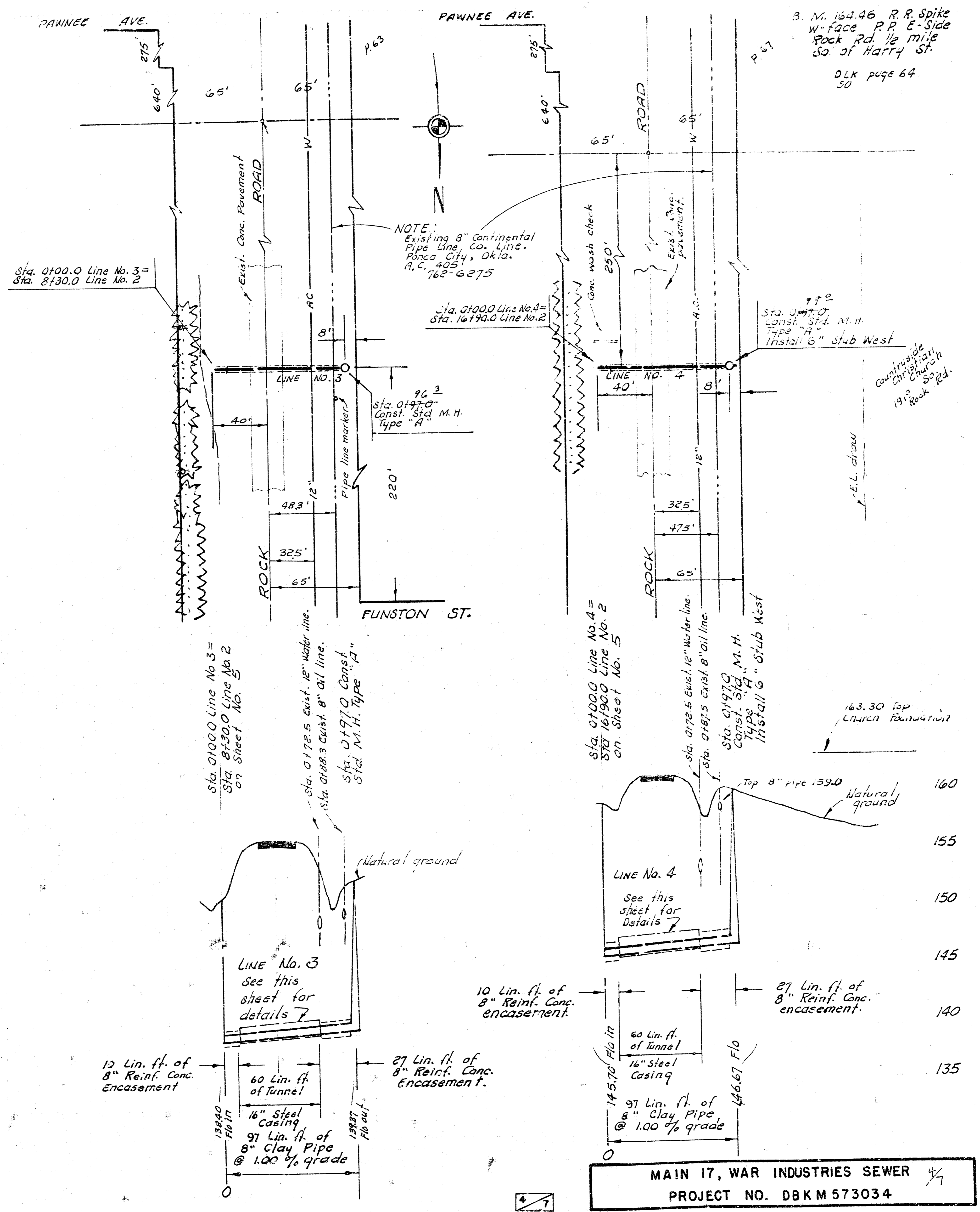
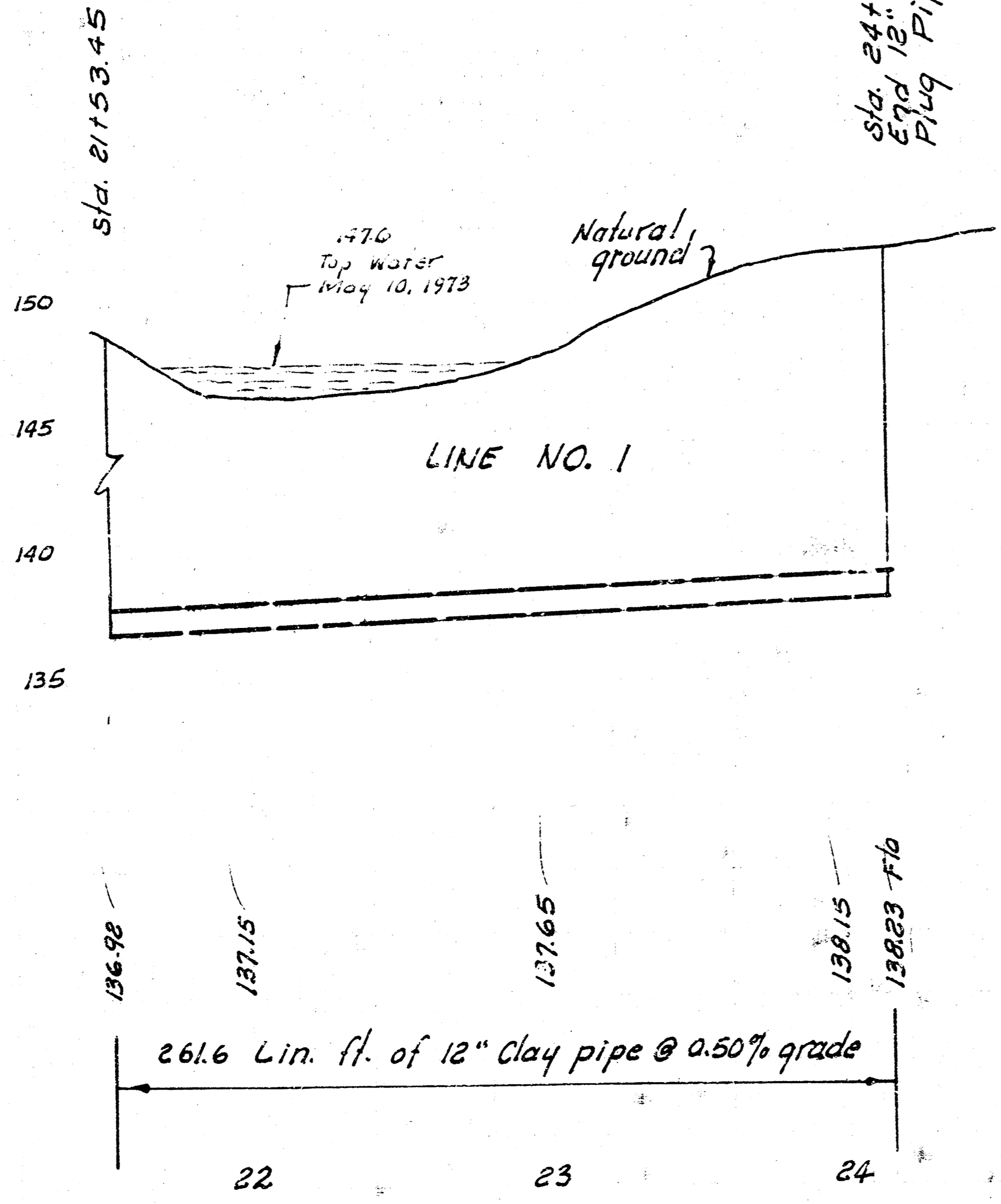
MAIN 17, WAR INDUSTRIES SEWER  
 PROJECT NO. DBKM 573034  
 3/7

NW 1/4 SEC. 32, TWP. 27S, R. 2, E.



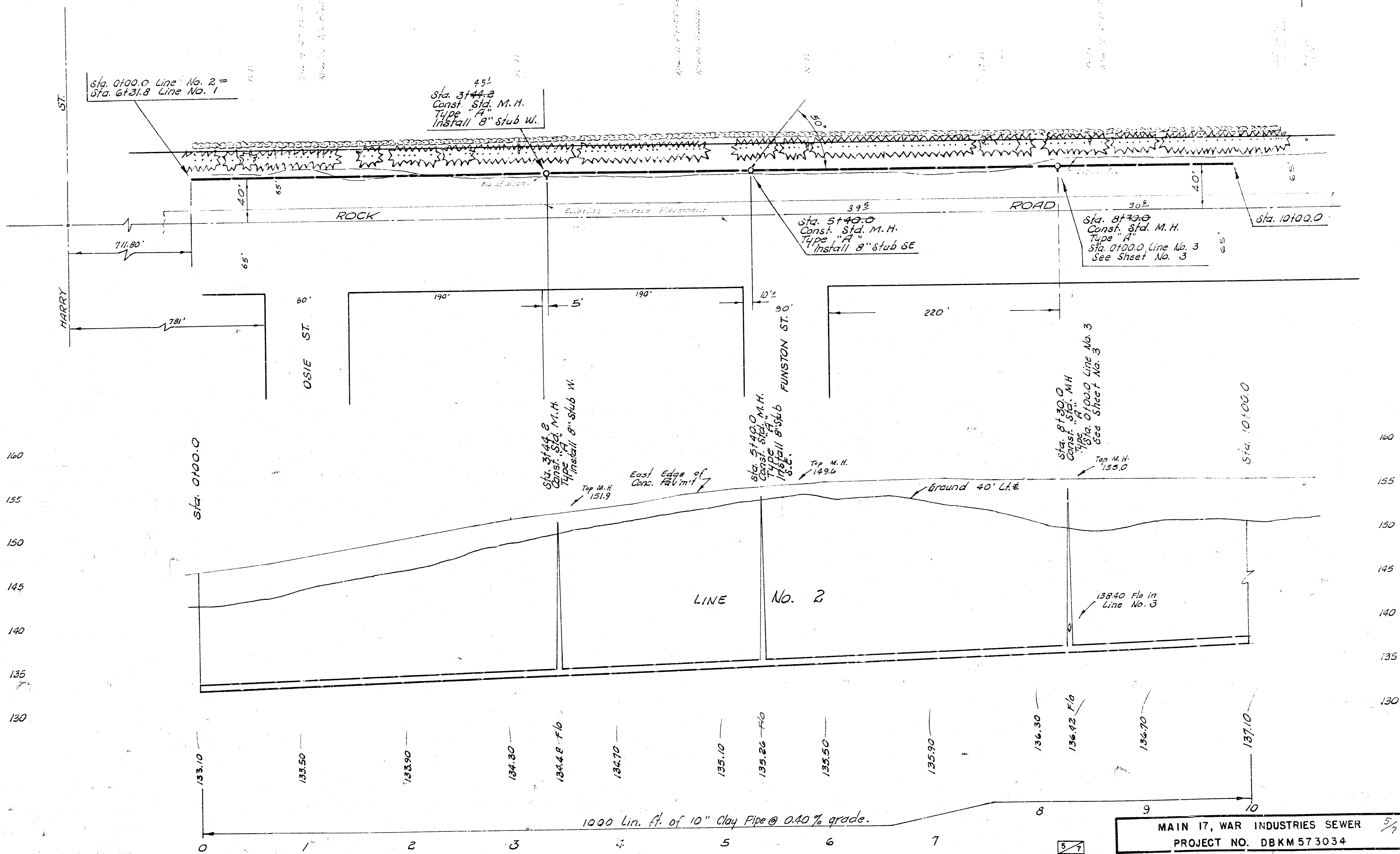
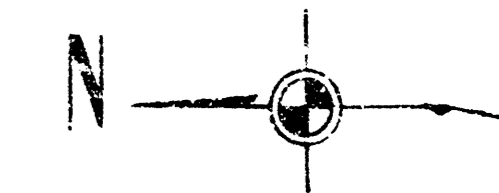
**TYPICAL SECTION**  
Tunnel for  
LINES NO. 3 and 4  
No Scale

**NOTE:**  
The bid price of Lin. ft. of casing shall include the augering, wood skids, straps and the pumping of sand.



**MAIN 17, WAR INDUSTRIES SEWER**  
**PROJECT NO. DBKM 573034**

B. M. 154.49 R.R. Spk. W-face, P.P. E.L. Rock Rd.  
S. L. Funston extended.



MAIN 17, WAR INDUSTRIES SEWER  
PROJECT NO. DBKM 573034



B. M. 165.71 "±" on ctr. Pawnee west  
on Ctr. Rock Road N-S

