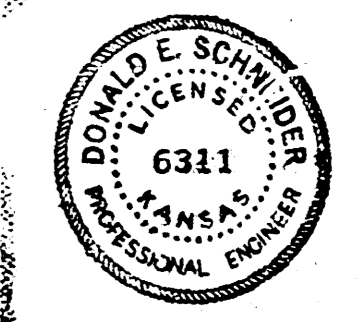
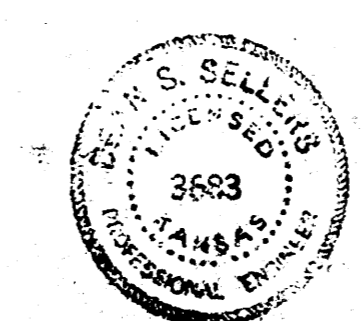
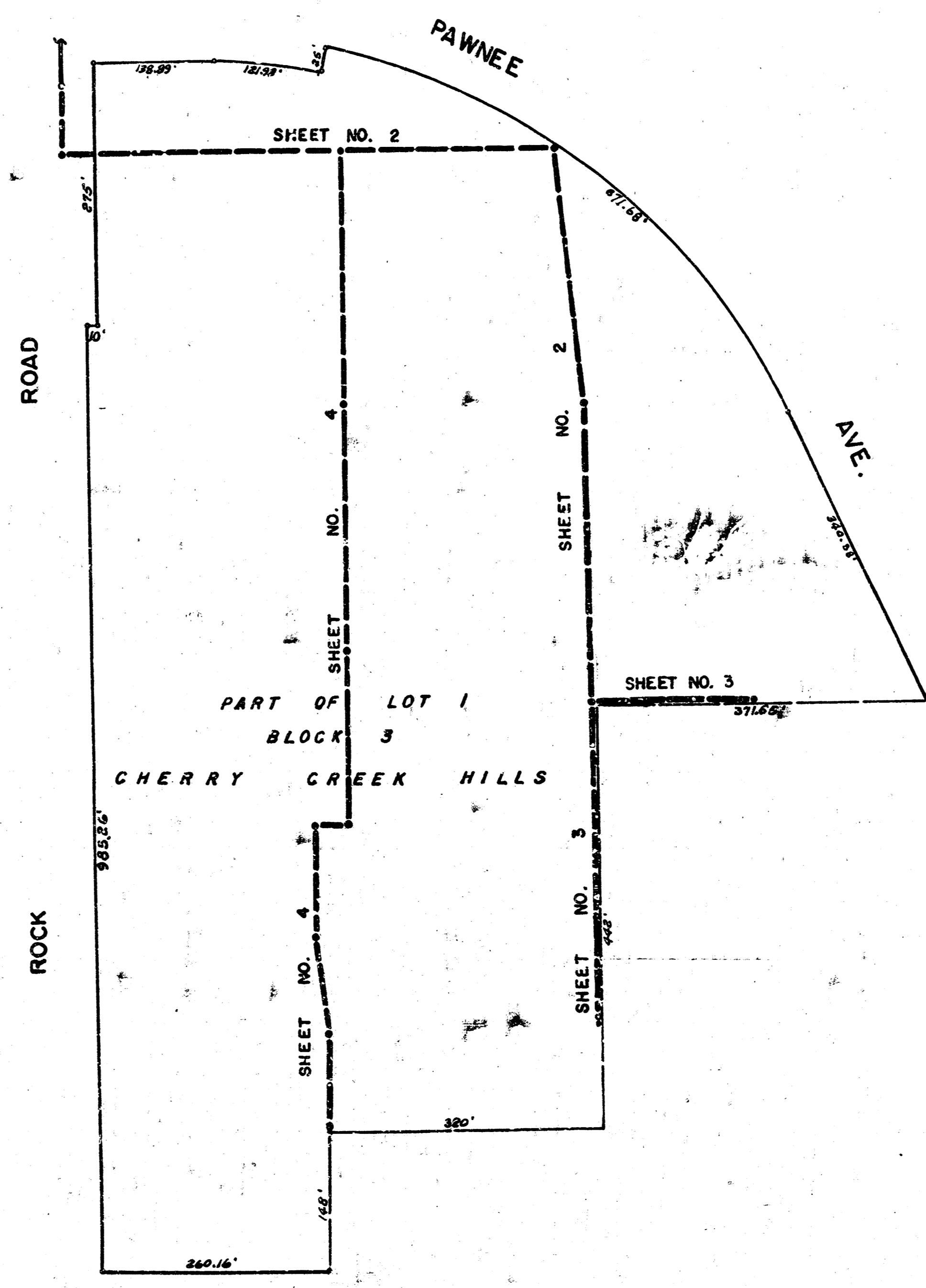
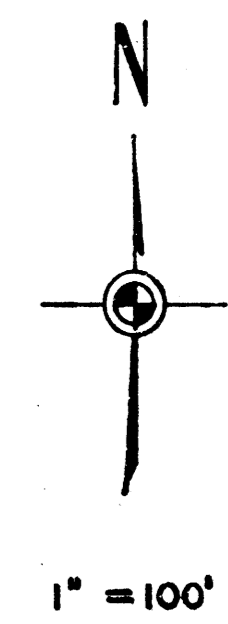


LAT. 16, MAIN 17, WAR INDUSTRIES SEWER
 CITY OF WICHITA, KANSAS
 R. W. LINN - CITY ENGINEER
 JAN. 1974, PROJECT NO. DBKL 573082

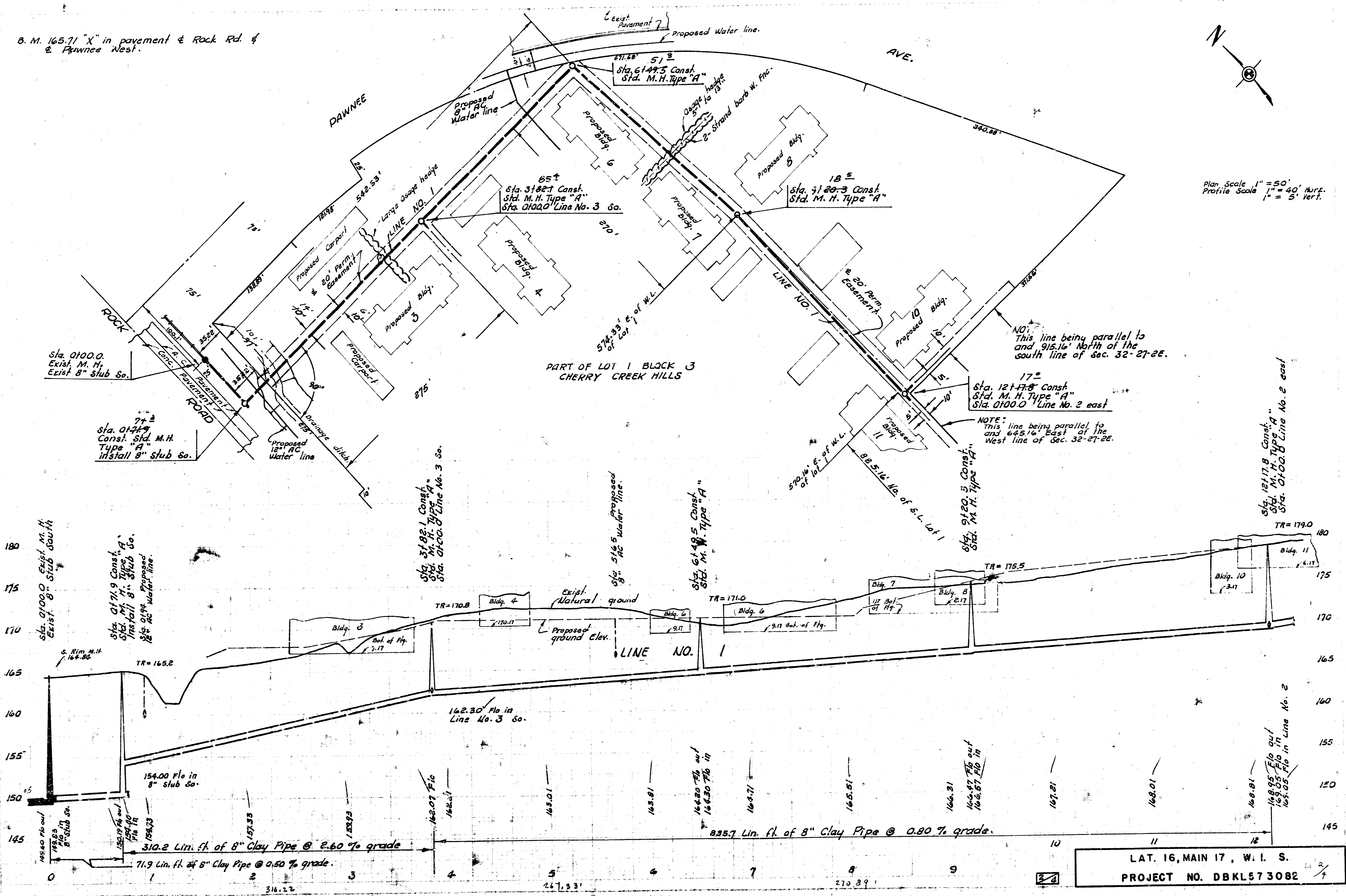


AS Built Final Meas. 9-E

LAT. 16, MAIN 17, W. I. S. 1/4
 PROJECT NO. DBKL 573082

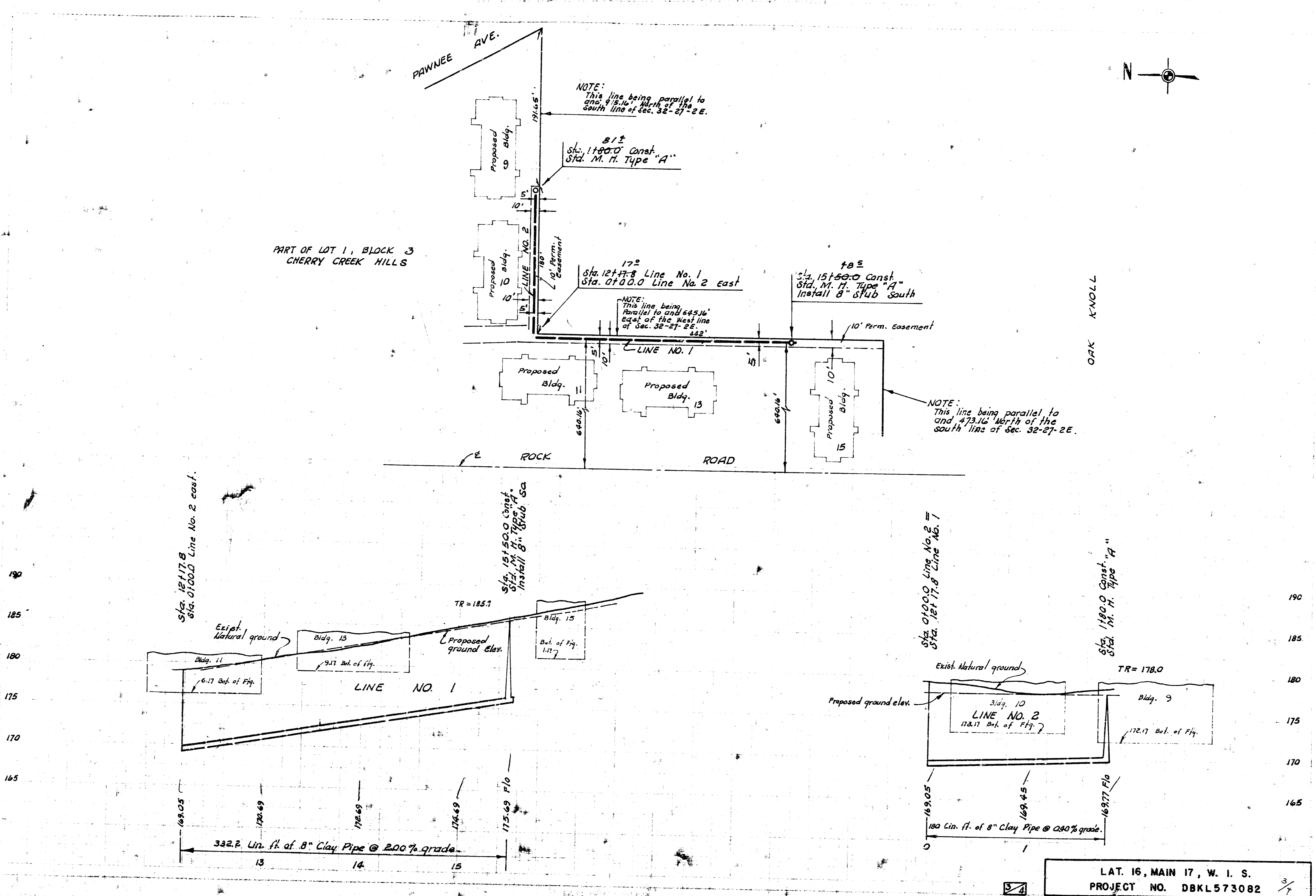
B.M. 165.71 "X" in pavement & Rock Rd. & Pawnee Nest.

D. F. & W. 152



Plan Scale 1" = 50' Horiz.
Profile Scale 1" = 5' Vert.

LAT. 16, MAIN 17, W. I. S.
PROJECT NO. DBKL573082



PART OF LOT 1, BLOCK 3
CHERRY CREEK HILLS

PAWNEE AVE.

LINE NO. 1

LINE NO. 2

ROCK ROAD

OAK KNOLL

NOTE:
This line being parallel to
and 9' 12.16" North of the
south line of Sec. 32-27-2 E.

Sta. 1100.0 Const.
Sta. M. H. Type "A"

Sta. 1217.8 Line No. 1
Sta. 0700.0 Line No. 2 east

NOTE:
This line being
parallel to and 445.16'
East of the West line
of Sec. 32-27-2 E.

Sta. 15150.0 Const.
Sta. M. H. Type "A"
Install 8" stub South

NOTE:
This line being parallel to
and 473.16' North of the
south line of Sec. 32-27-2 E.

Sta. 1217.8
Sta. 0700.0 Line No. 2 east.

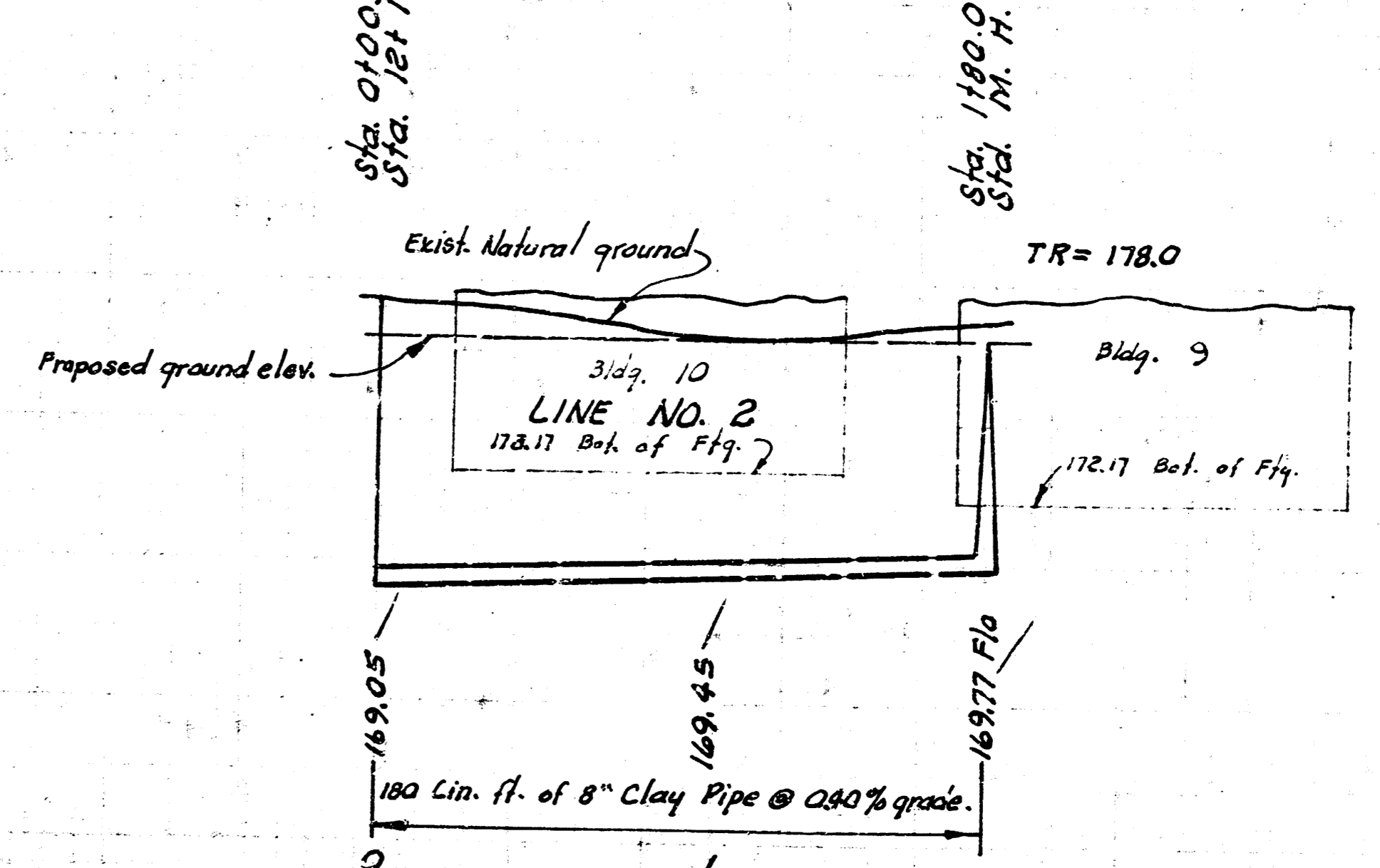
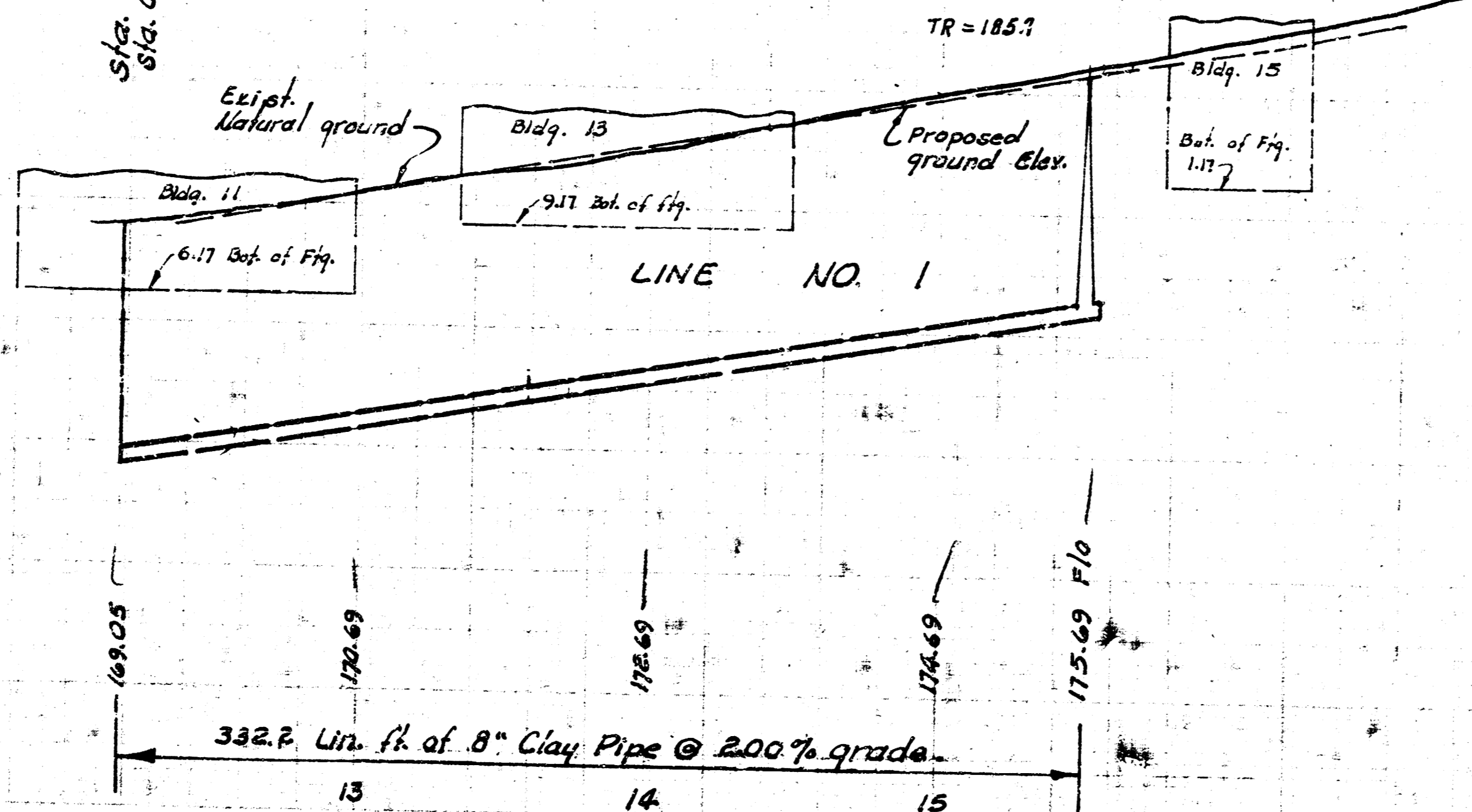
Sta. 15150.0 Const.
Sta. M. H. Type "A"
Install 8" stub South

Sta. 0700.0 Line No. 2
Sta. 1217.8 Line No. 1

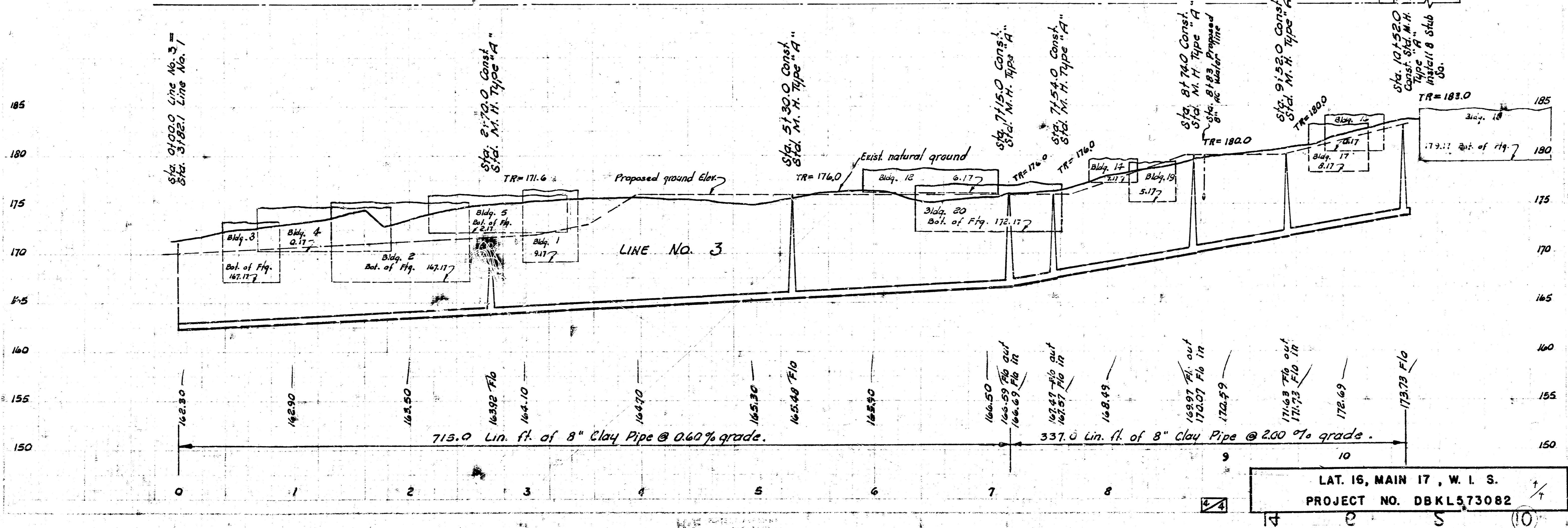
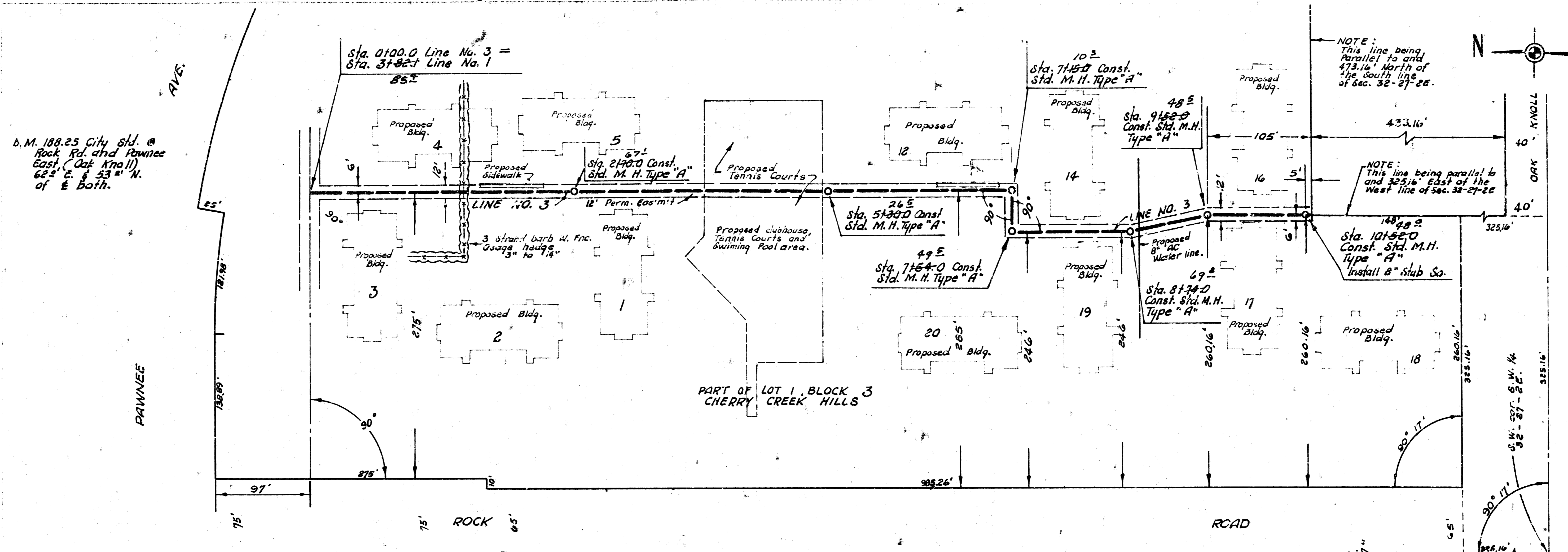
Sta. 1100.0 Const "A"
Sta. M. H. Type "A"

190
185
180
175
170
165

190
185
180
175
170
165



LAT. 16, MAIN 17, W. I. S.
PROJECT NO. DBKL573082



b. M. 189.25 City Std. @ Rock Rd. and Pawnee East, (Oak Knoll) 62° E. & 53° N. of E. Both.

NOTE: This line being parallel to and 473.16' North of the South line of sec. 32-27-2E.

NOTE: This line being parallel to and 323.16' East of the West line of sec. 32-27-2E.

Sta. 10+52.0 Const. Std. M.H. Type "A" Install 8" Stub S.

LAT. 16, MAIN 17, W. I. S.
PROJECT NO. DBKL573082