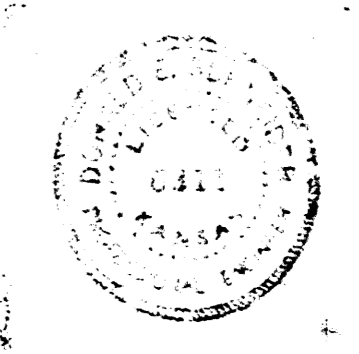
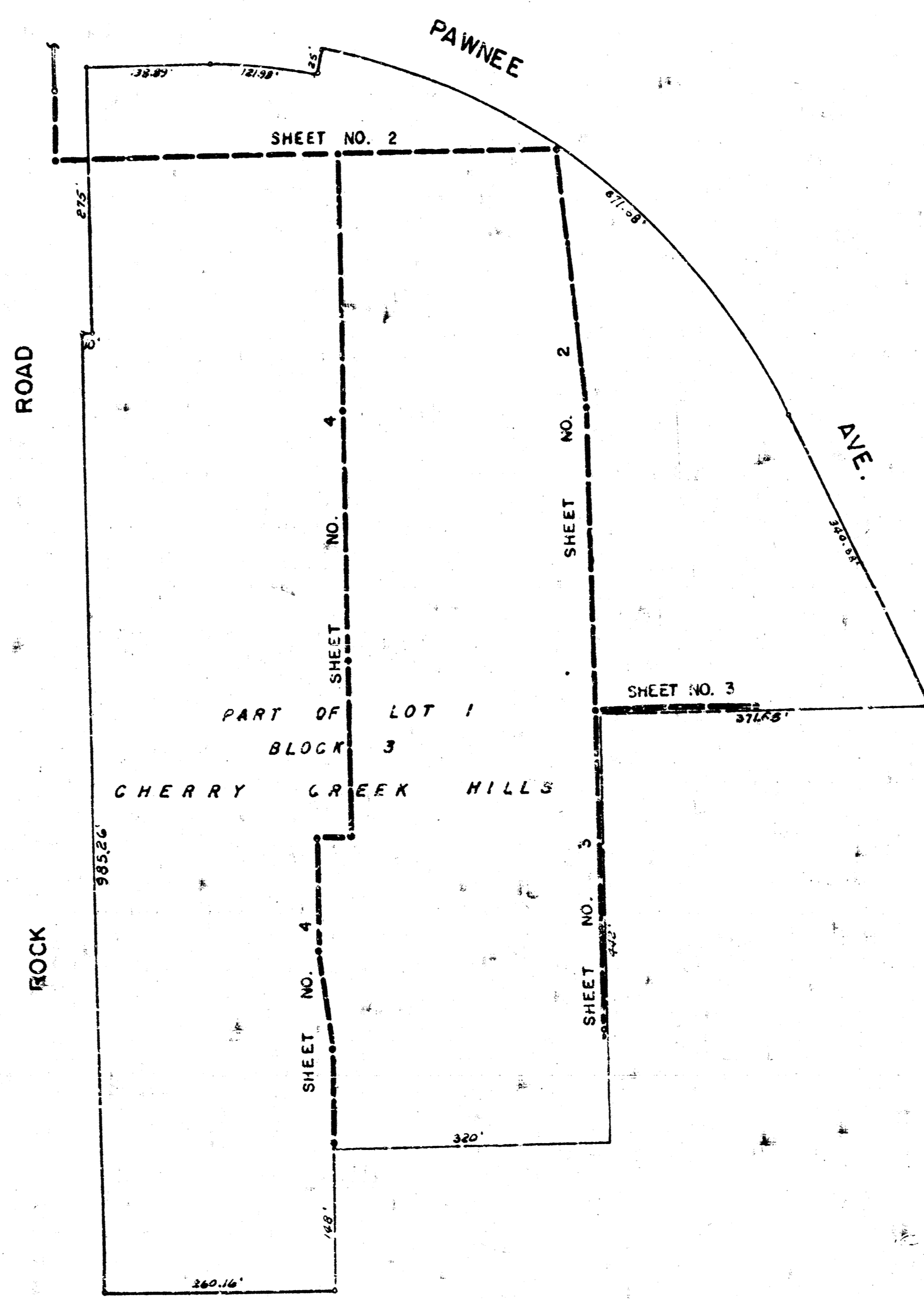
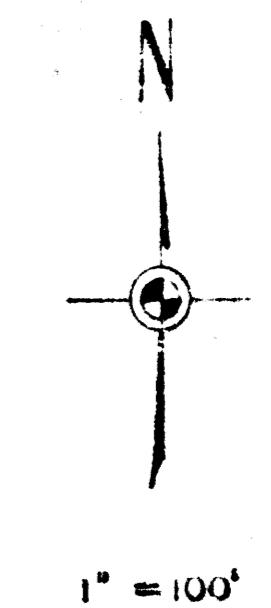


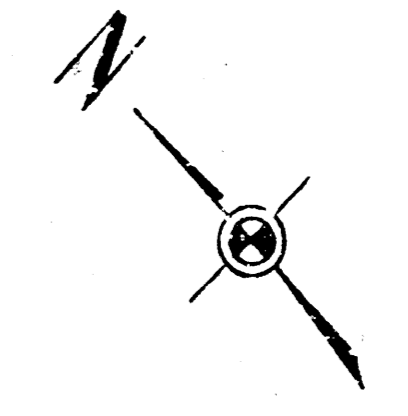
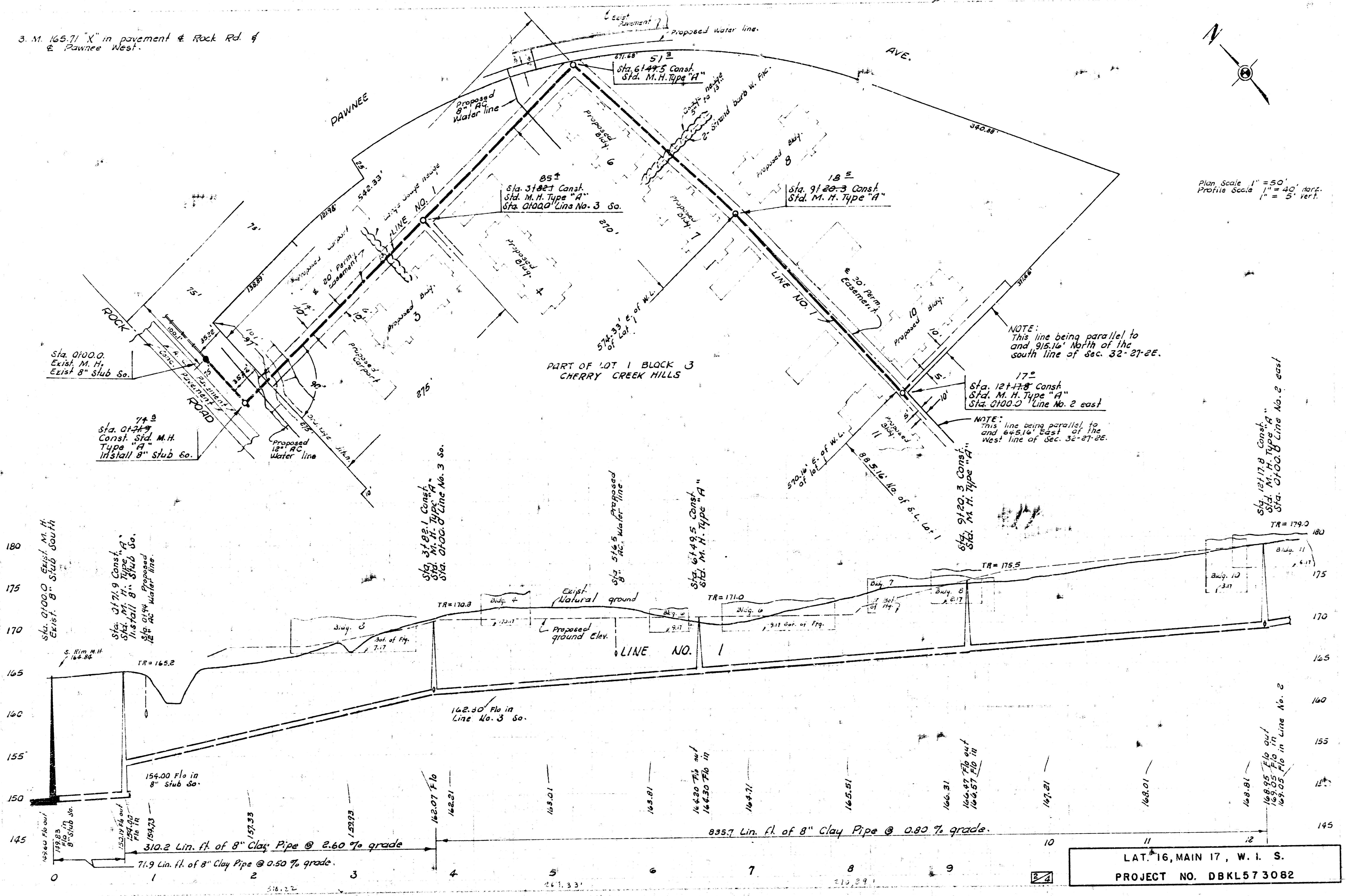
LAT. 16 , MAIN 17 , WAR INDUSTRIES SEWER  
CITY OF WICHITA , KANSAS  
R. W. LINN — CITY ENGINEER  
JAN. 1974 , PROJECT NO. DBKL 57 3082



AS Built Final Meas. 9-E  
LAT. 16, MAIN 17, W. I. S.  
PROJECT NO. DBKL 57 3082

3 M. 165.71' X in pavement & Rock Rd. & Pawnee West.

S. F. R. S. W. 231



Plan Scale 1" = 50'  
Profile Scale 1" = 40' Horiz.  
1" = 5' Vert.

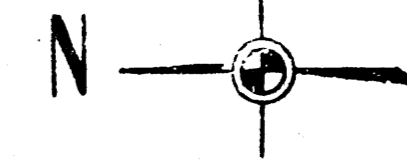
NOTE: This line being parallel to and 915.16' North of the south line of Sec. 32-27-2E.

NOTE: This line being parallel to and 645.16' East of the West line of Sec. 32-27-2E.

LAT. 16, MAIN 17, W. I. S.  
PROJECT NO. DBKL573082

PART OF LOT 1, BLOCK 3  
CHERRY CREEK HILLS

PAWNEE AVE.



NOTE:  
This line being parallel to  
and 418.16' North of the  
south line of sec. 32-27-2E.

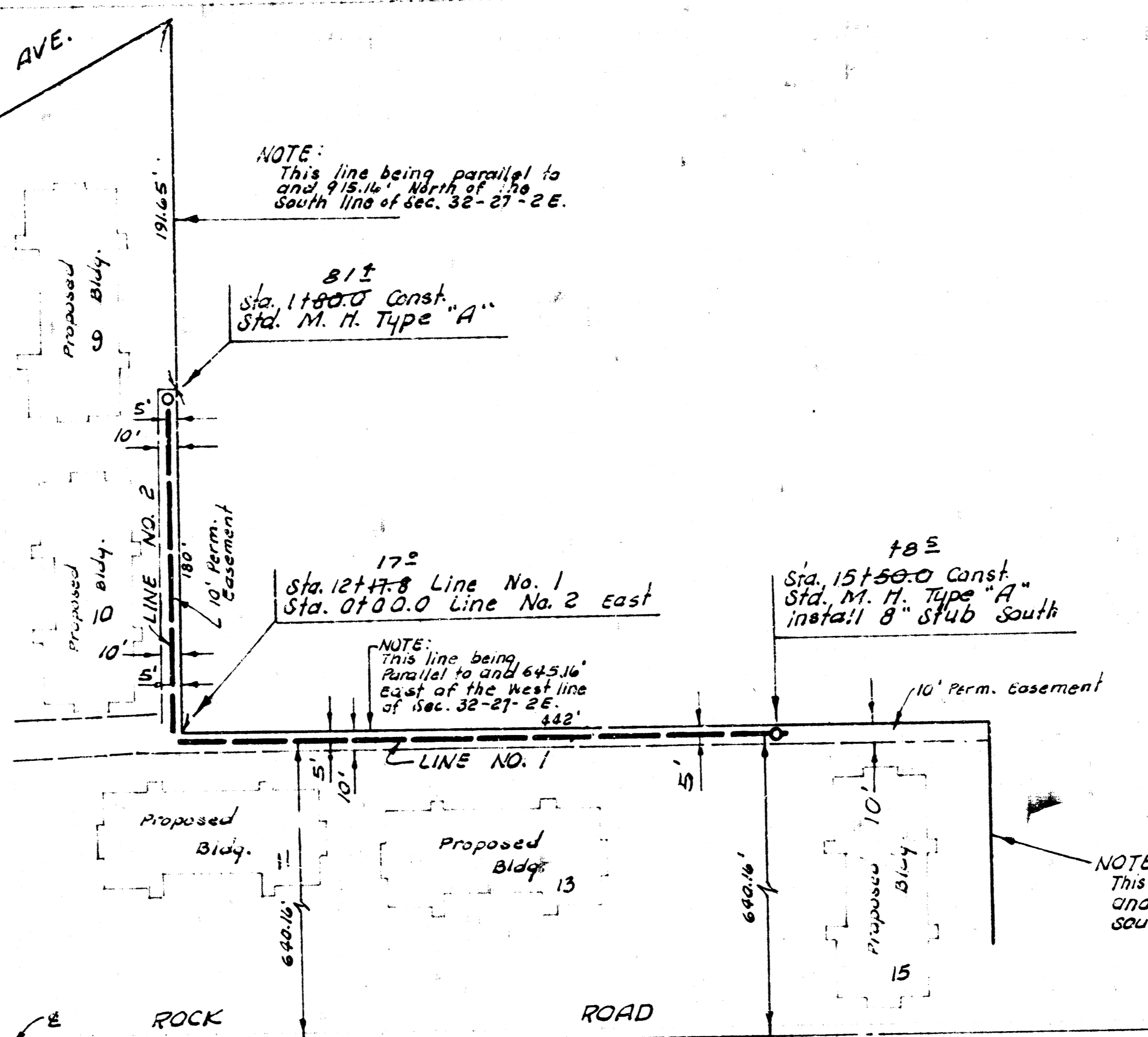
8 1/2"  
Sta. 11800.0 Const. "A"  
Sta. M. H. Type "A"

17°  
Sta. 12477.8 Line No. 1  
Sta. 0700.0 Line No. 2 east

NOTE:  
This line being  
parallel to and 643.16'  
east of the West line  
of sec. 32-27-2E.

± 0 ±  
Sta. 15150.0 Const. "A"  
Sta. M. H. Type "A"  
Install 8" Stub South

NOTE:  
This line being parallel to  
and 473.16' North of the  
south line of sec. 32-27-2E.

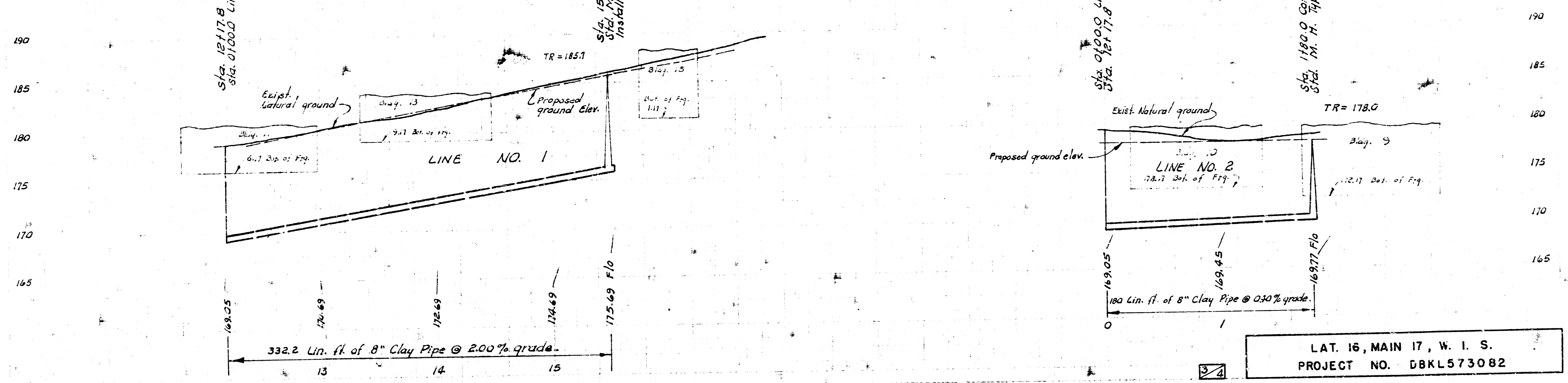


Sta. 12477.8  
Sta. 0700.0 Line No. 2 east.

Sta. 15150.0 Const.  
Sta. M. H. Type "A"  
Install 8" Stub S.

Sta. 0700.0 Line No. 2  
Sta. 12477.8 Line No. 1

Sta. 11800.0 Const. "A"  
Sta. M. H. Type "A"



LAT. 16, MAIN 17, W. I. S.  
PROJECT NO. DBKL573082

