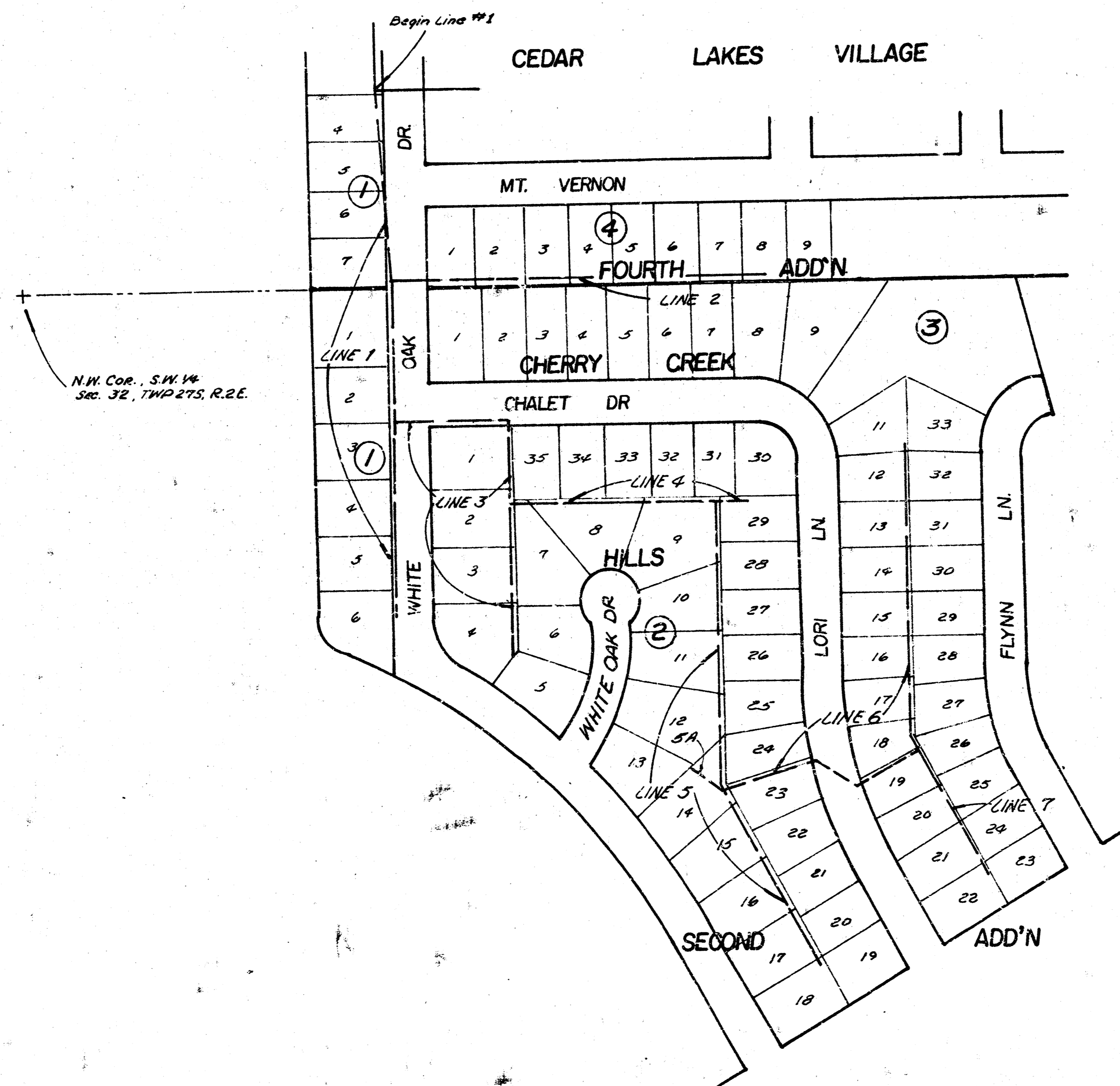


LAT. 20 MAIN 17 WAR INDUSTRIES SEWER

R. W. LINN CITY ENGINEER

PROJ. NO. DBKL 574103

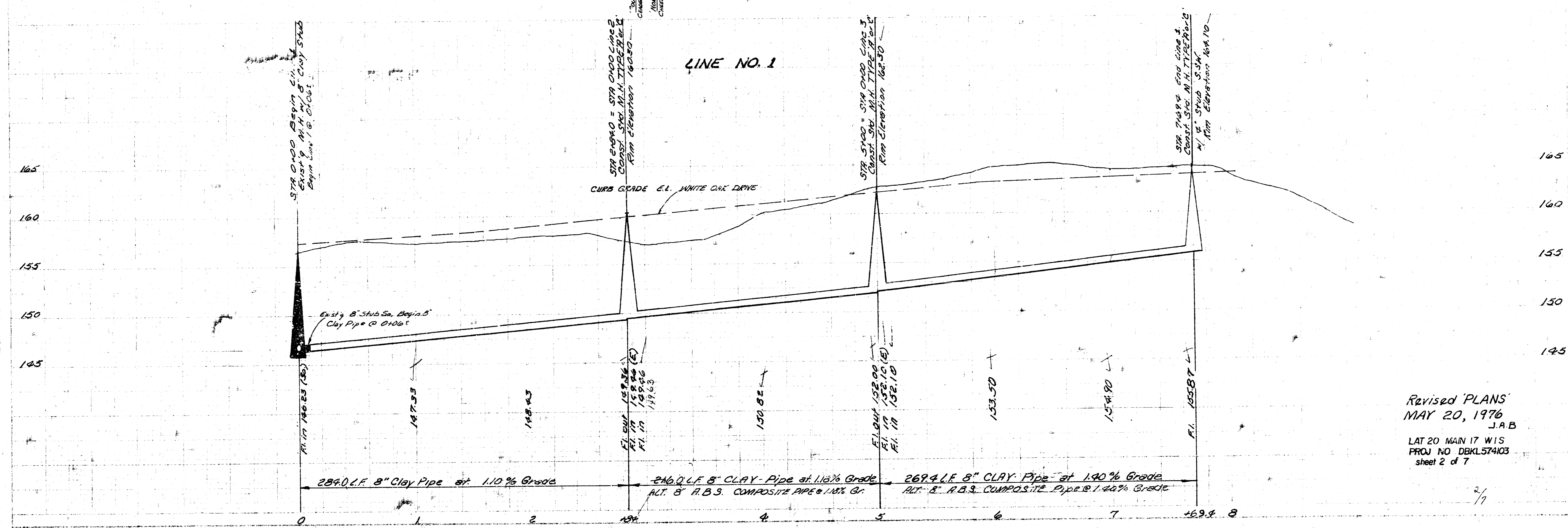
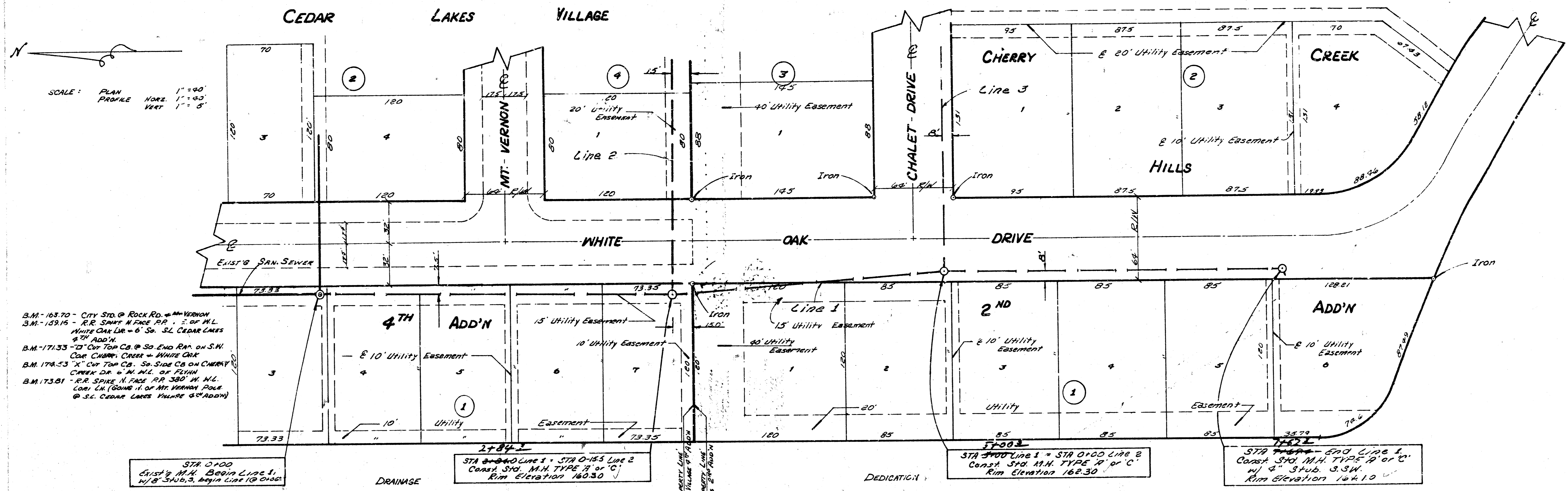
| INDEX | |
|-------|--------|
| LINES | SHEETS |
| 1 | 2 |
| 2 | 3 |
| 3 | 4 |
| 4 | 4 |
| 5 | 5 |
| 5A | 5 |
| 6 | 5,6 |
| 7 | 7 |



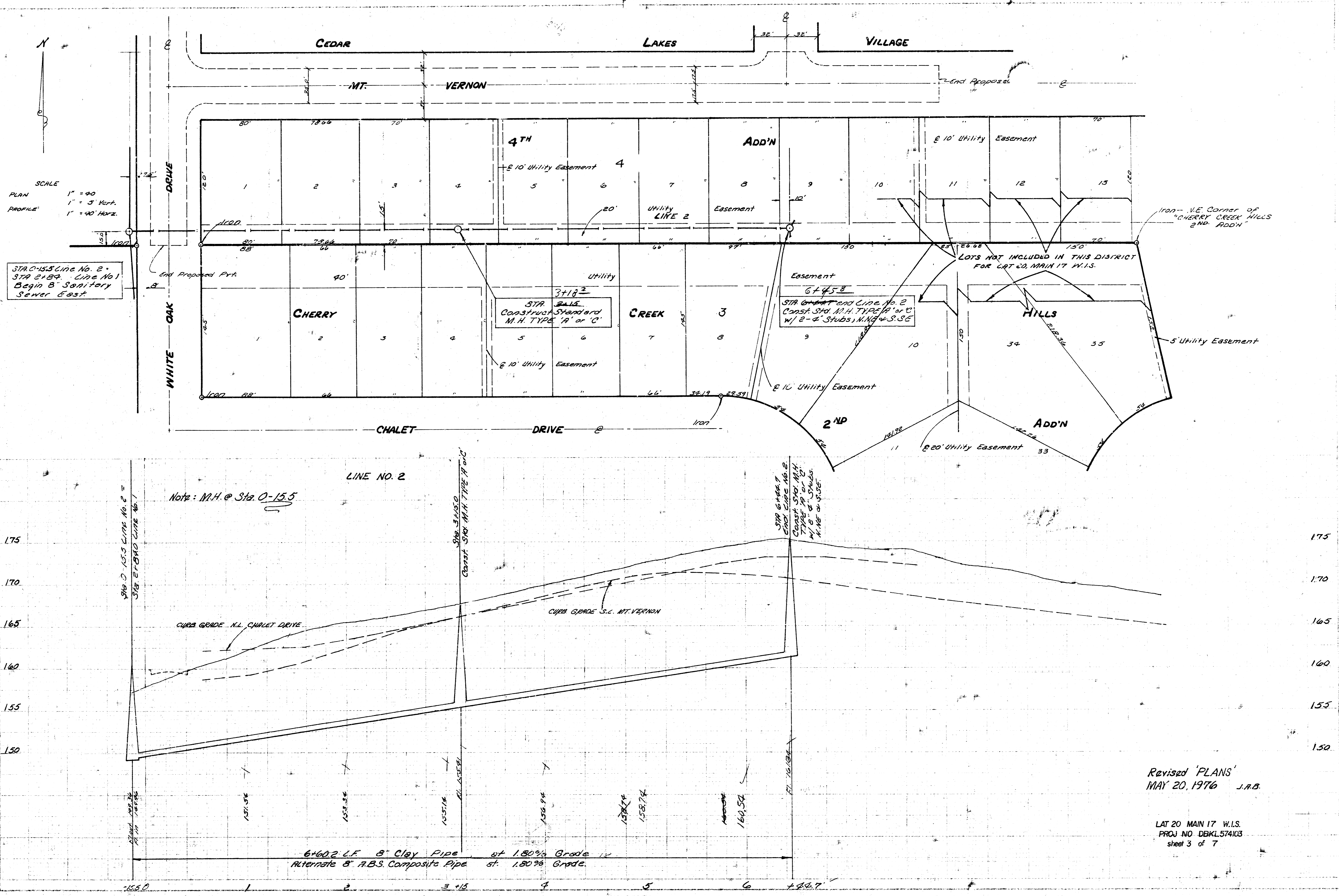
FIELD ENGINEER TO DETERMINE TREE REMOVAL.
ALL TREES IN THE OPINION OF THE ENGINEER,
 WHICH CAN BE SAVED, SHALL BE SAVED.

As built 2-24-77





Revised PLANS
MAY 20, 1976
J.A.B.
LAT 20 MAIN 17 WIS
PROJ NO DBKL574103
sheet 2 of 7



SCALE
 PLAN 1" = 40'
 PROFILE 1" = 5' Vert.
 1" = 40' Horiz.

STA. 0+15.5 Line No. 2
 STA. 2+18.4 Line No. 1
 Begin 8" Sanitary
 Sewer East

End Proposed Pkt

WHITE OAK DRIVE

CHERRY

CREEK

CHALET DRIVE

LINE NO. 2

Note: M.H. @ Sta. 0+15.5

CURB GRADE N.L. CHALET DRIVE

CURB GRADE S.E. MT. VERNON

6x60.2 LF 8" Clay Pipe at 1.80% Grade
 Alternate 8" A.B.S. Composite Pipe at 1.80% Grade

STA. 6+44.7
 Construct 5' Dia. M.H.
 Type 19 or 21
 w/ 2" x 4" Studs, M.H. @ S.E.

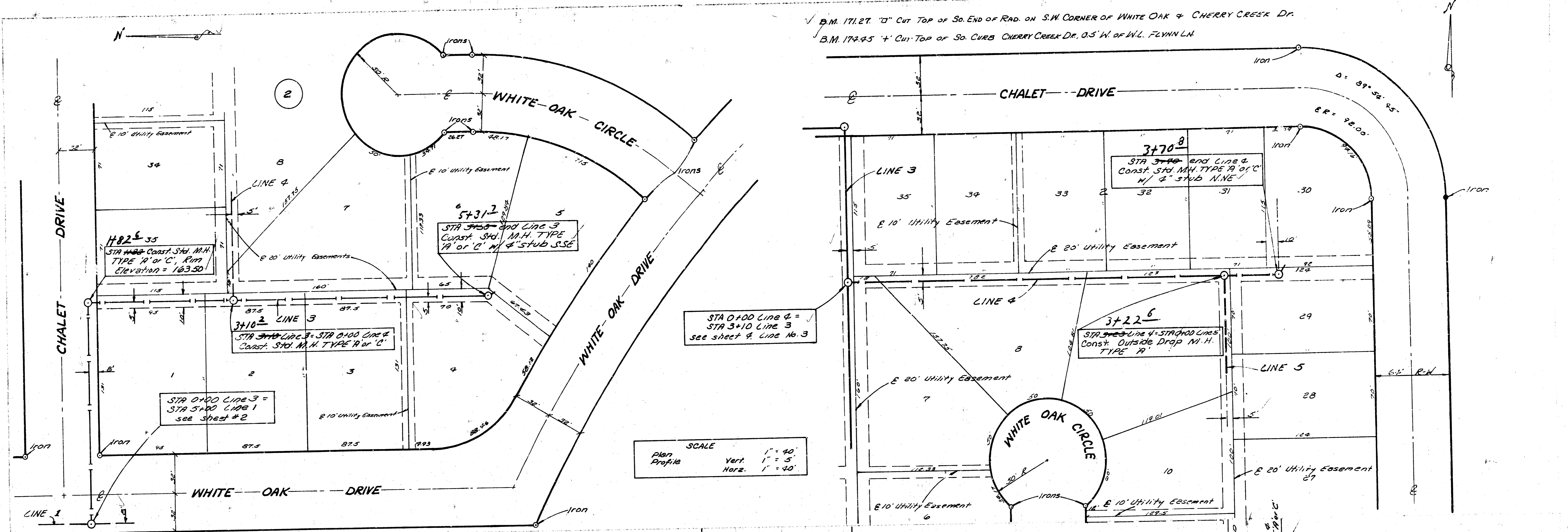
STA. 3+18.2
 Construct Standard
 M.H. Type 'A' or 'C'

Iron - NE Corner of
 Cherry Creek Hills
 2nd Add'n

LOTS NOT INCLUDED IN THIS DISTRICT
 FOR LOT 20, MAIN 17 W.L.S.

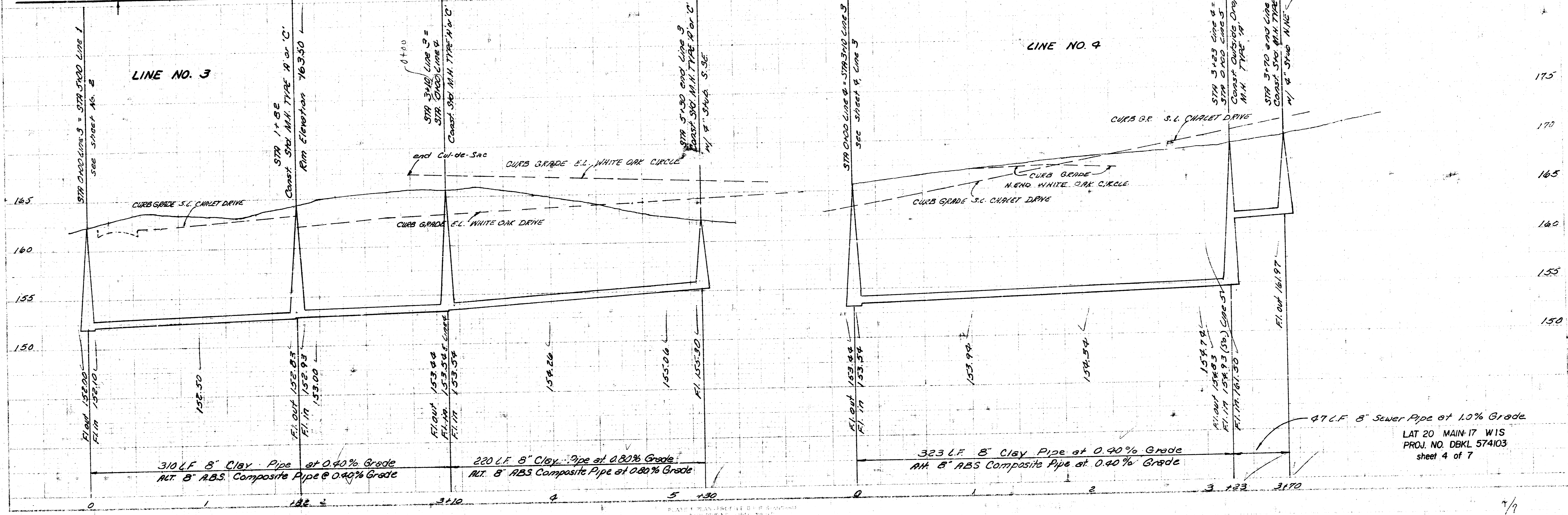
Revised 'PLANS'
 MAY 20, 1976 J.A.B.

LAT 20 MAIN 17 W.L.S.
 PROJ NO DBKL574103
 sheet 3 of 7



B.M. 171.27 'D' Cut Top of So. End of Rad. on S.W. Corner of White Oak & Cherry Creek Dr.
 B.M. 174.45 '4' Cut Top of So. Curb Cherry Creek Dr. 0.5' W. of N.L. Flynn Ln.

SCALE
 Plan 1" = 40'
 Profile Vert. 1" = 5'
 Horz. 1" = 40'



Profile
 175
 170
 165
 160
 155
 150

175
 170
 165
 160
 155
 150

310 L.F. 8" Clay Pipe at 0.40% Grade
 ALT. 8" ABS Composite Pipe at 0.40% Grade

220 L.F. 8" Clay Pipe at 0.80% Grade
 ALT. 8" ABS Composite Pipe at 0.80% Grade

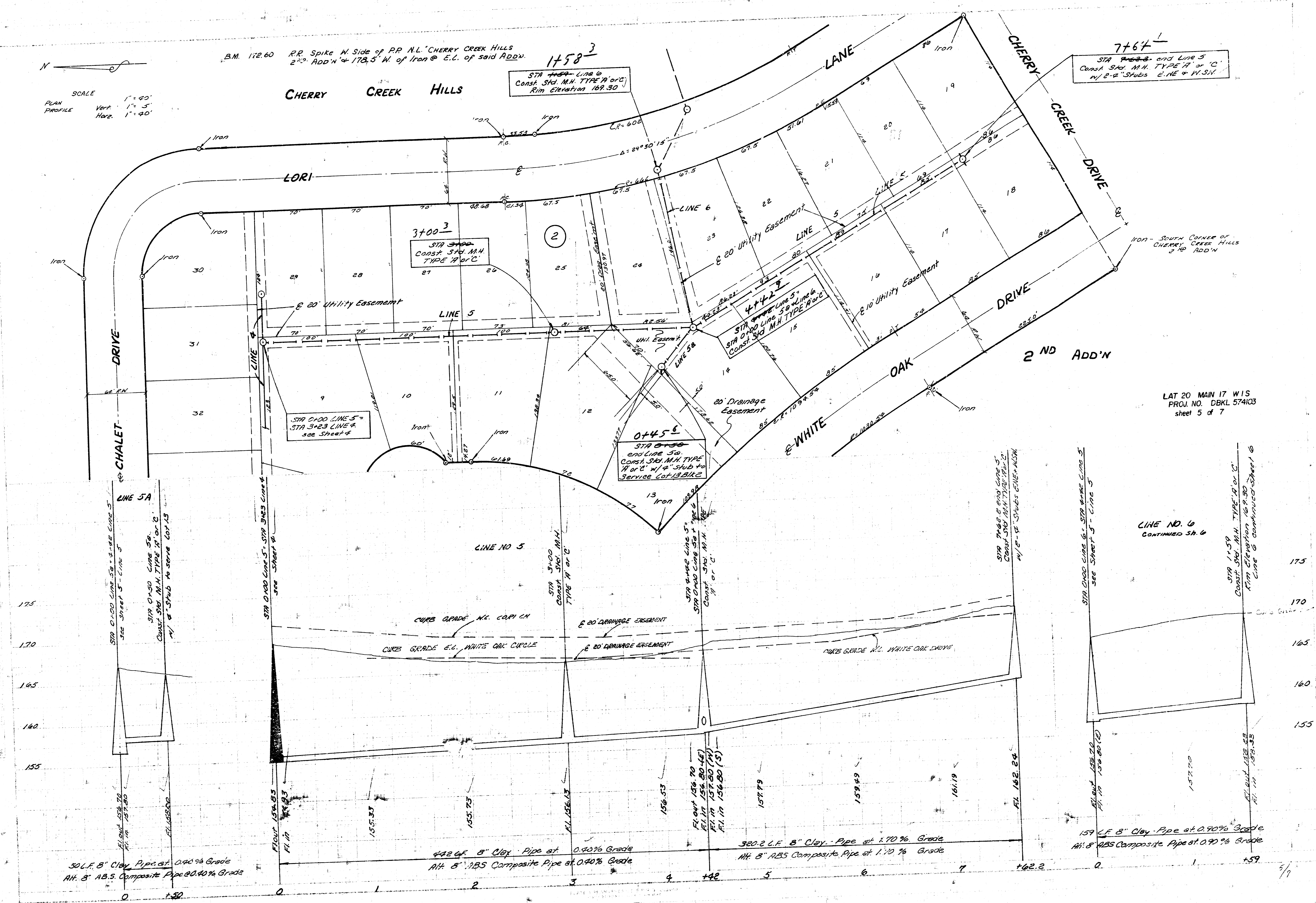
323 L.F. 8" Clay Pipe at 0.40% Grade
 ALT. 8" ABS Composite Pipe at 0.40% Grade

47 L.F. 8" Sewer Pipe at 1.0% Grade
 LAT 20 MAIN 17 W15
 PROJ. NO. DBKL 574103
 sheet 4 of 7

SCALE
 PLAN 1" = 40'
 PROFILE Vert. 1" = 5'
 Horiz. 1" = 40'

B.M. 172.60 RR Spike W. Side of RR N.L. CHERRY CREEK HILLS
 2ND ADD'N 178.5' W. of Iron @ E.C. of said ADD'N.

CHERRY CREEK HILLS



1758³
 STA 4+58.00 end Line 6
 Const. 36" M.H. TYPE 'A' or 'C'
 Rim Elevation 169.30

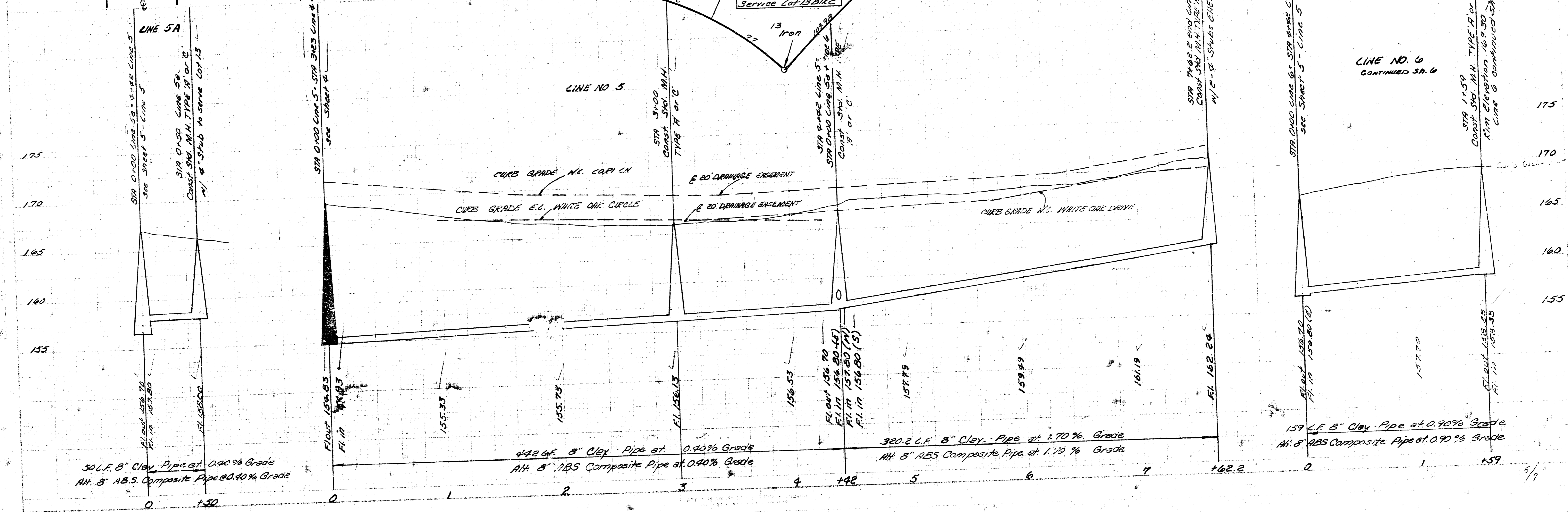
3+00.3
 STA 3+00.00
 Const. 36" M.H. TYPE 'A' or 'C'

4+42.5
 STA 4+42.50 end Line 5
 Const. 36" M.H. TYPE 'A' or 'C'
 w/ 4" stub to service lot 13 & 14

0+45.6
 STA 0+45.60
 Const. 36" M.H. TYPE 'A' or 'C'
 w/ 4" stub to service lot 13 & 14

7+64.1
 STA 7+64.10 end Line 5
 Const. 36" M.H. TYPE 'A' or 'C'
 w/ 2" stubs E.N.E. & N.W.S.W.

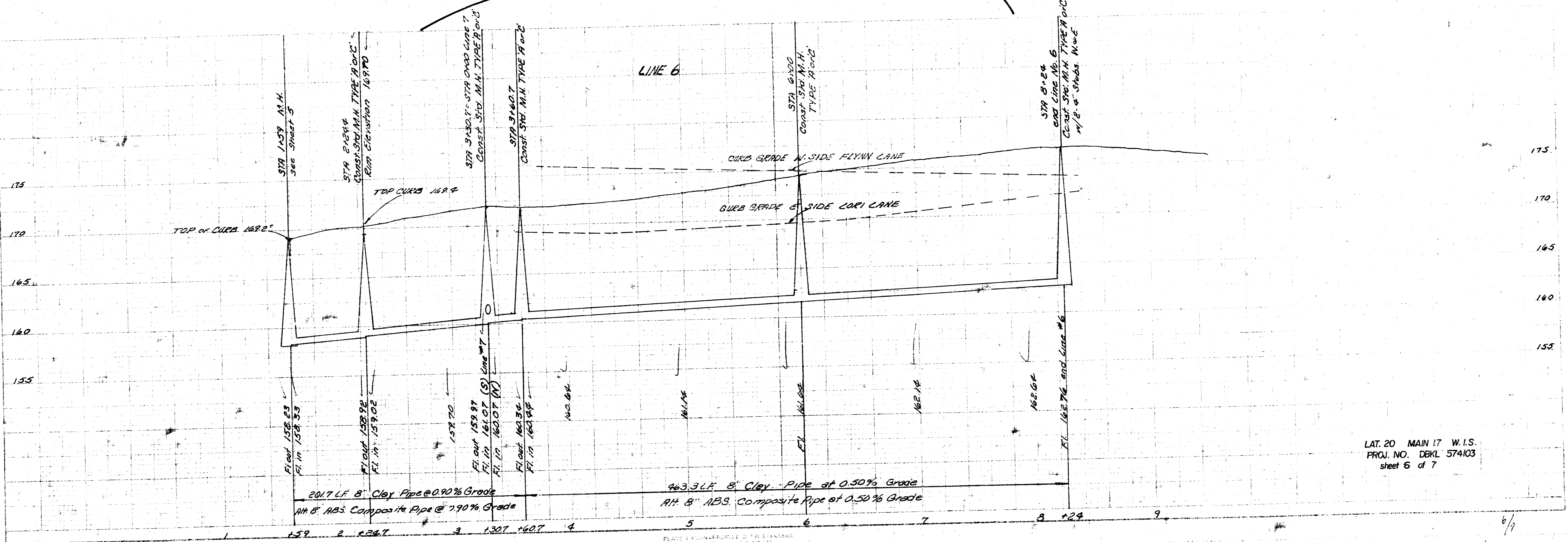
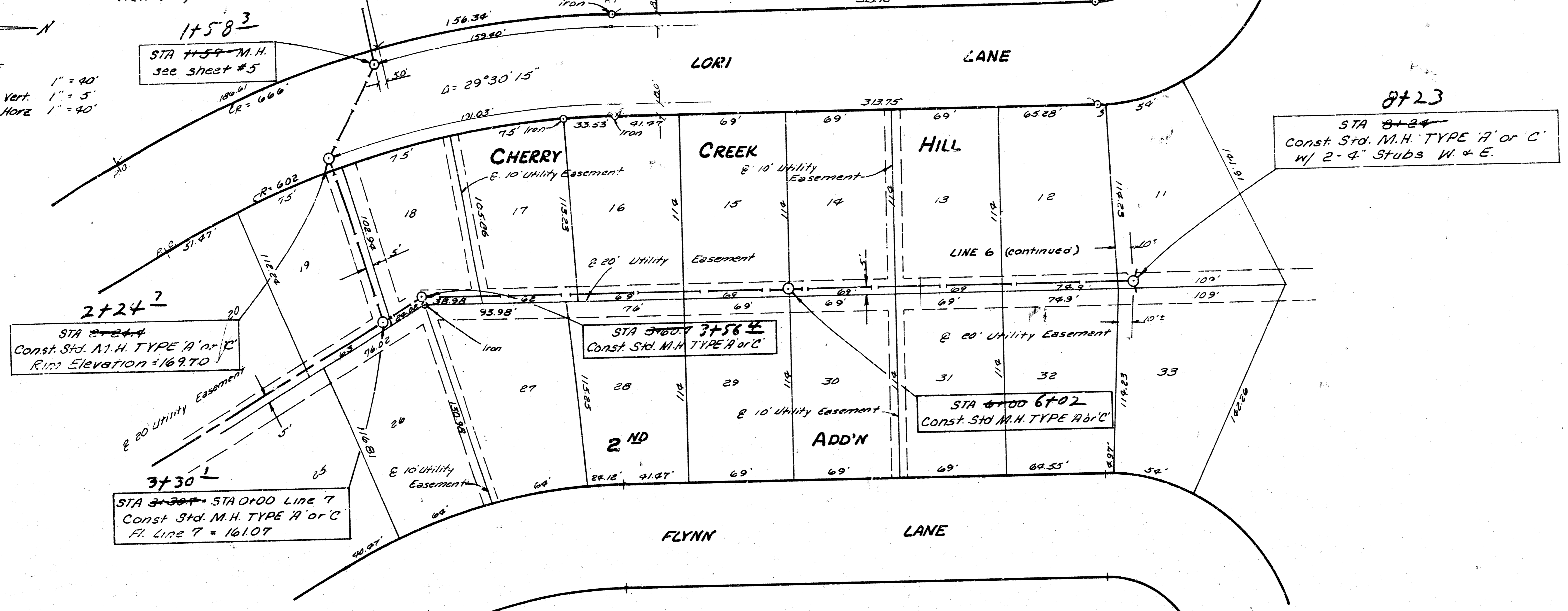
LAT 20 MAIN 17 W 1 S
 PROJ. NO. DBKL 574103
 sheet 5 of 7



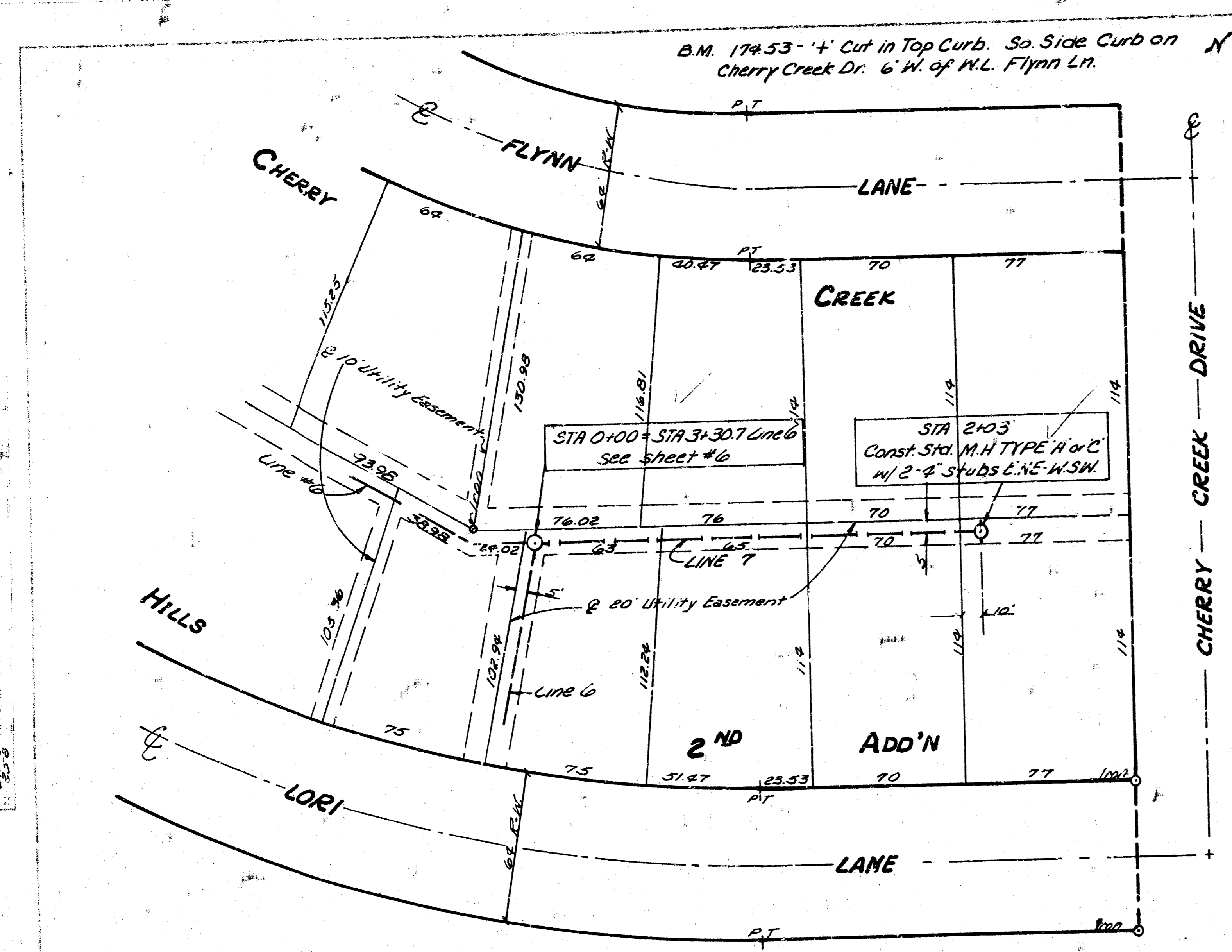
LINE NO. 6
 CONTINUED SH. 6

B.M. - 172.60 - R.R. Spike W. Side RR N.L. Cherry Hills 2ND Add'n.
178.5' W of Iron @ E.L. Said. Add'n.

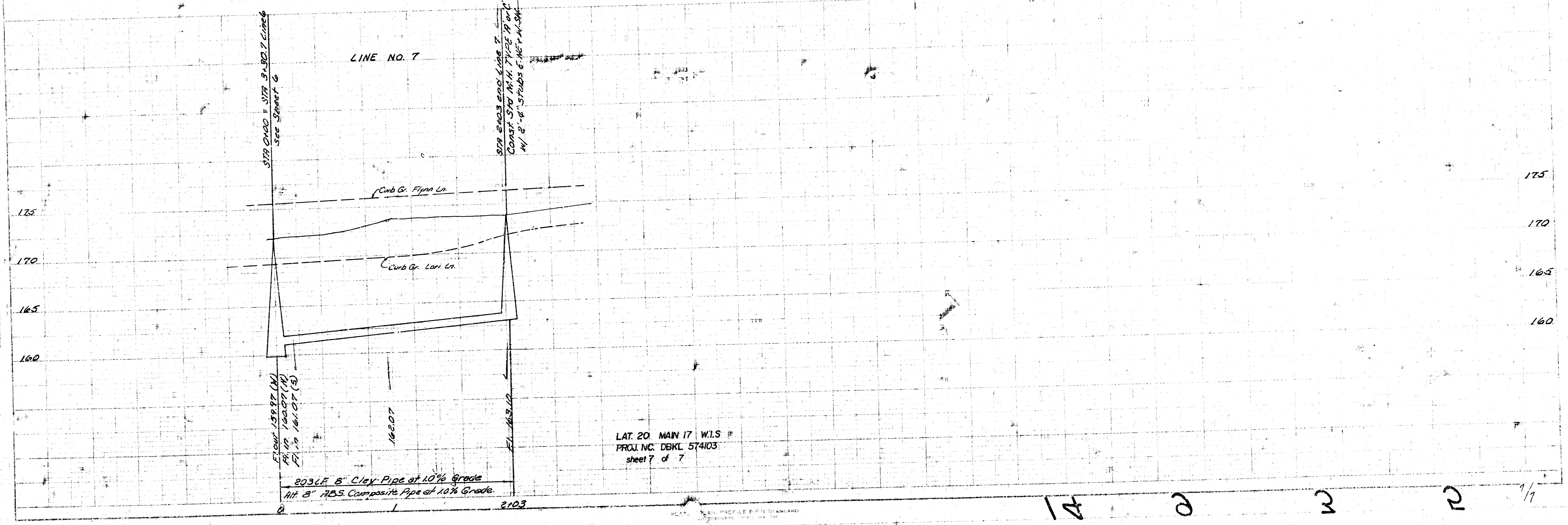
SCALE
Plan 1" = 40'
Profile Vert. 1" = 5'
Horz. 1" = 40'



LAT. 20 MAIN 17 W.I.S.
PROJ. NO. DBKL 574103
sheet 6 of 7



SCALE
 Plan 1" = 40'
 Profile 1" = 5'
 Horiz 1" = 40'



LAT. 20. MAIN 17 W.L.S.
 PROJ. NO. DBKL 574103
 sheet 7 of 7

17 0 2 2 1/1