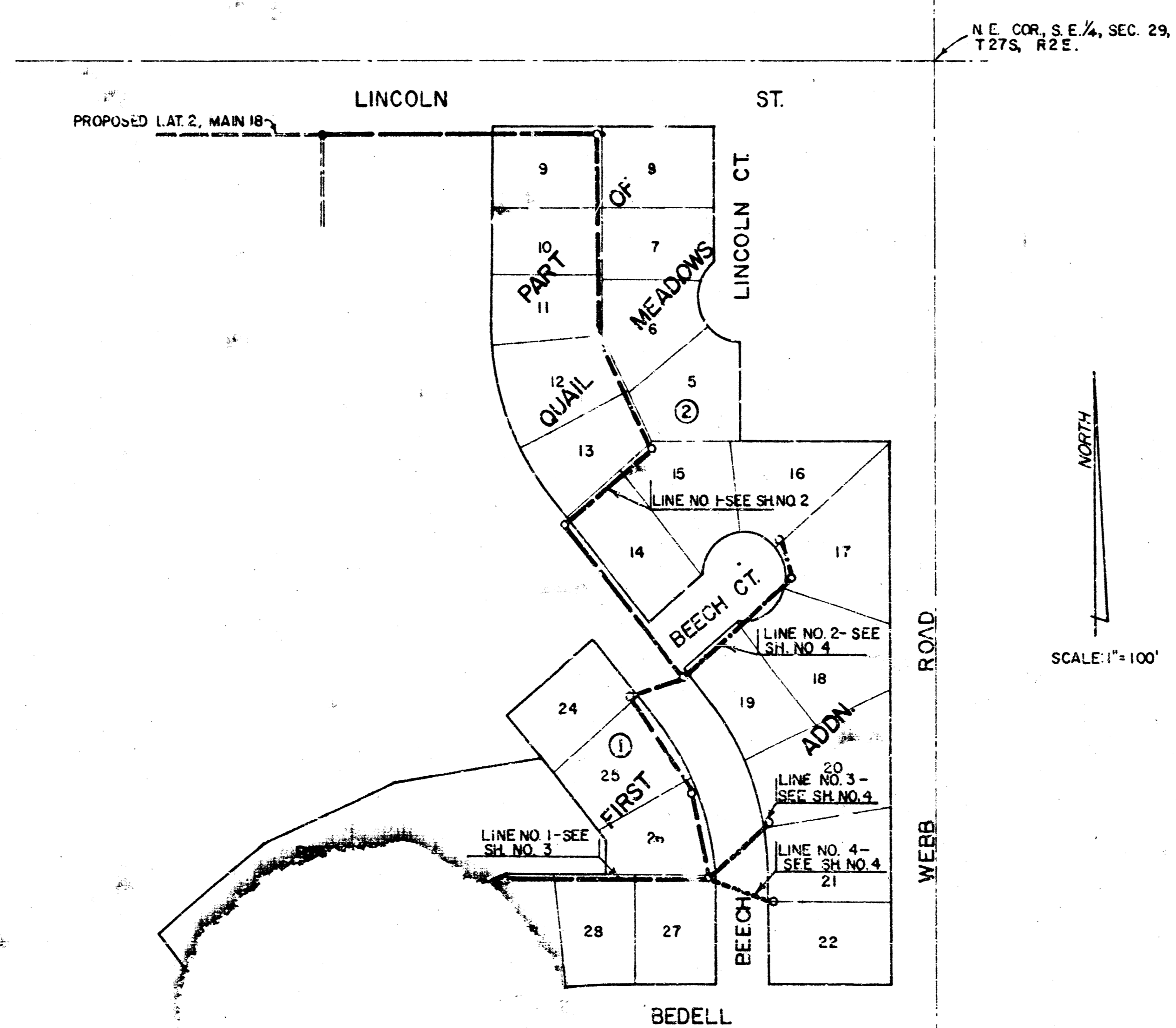


LAT 3, MAIN 18, WAR INDUSTRIES SEWER

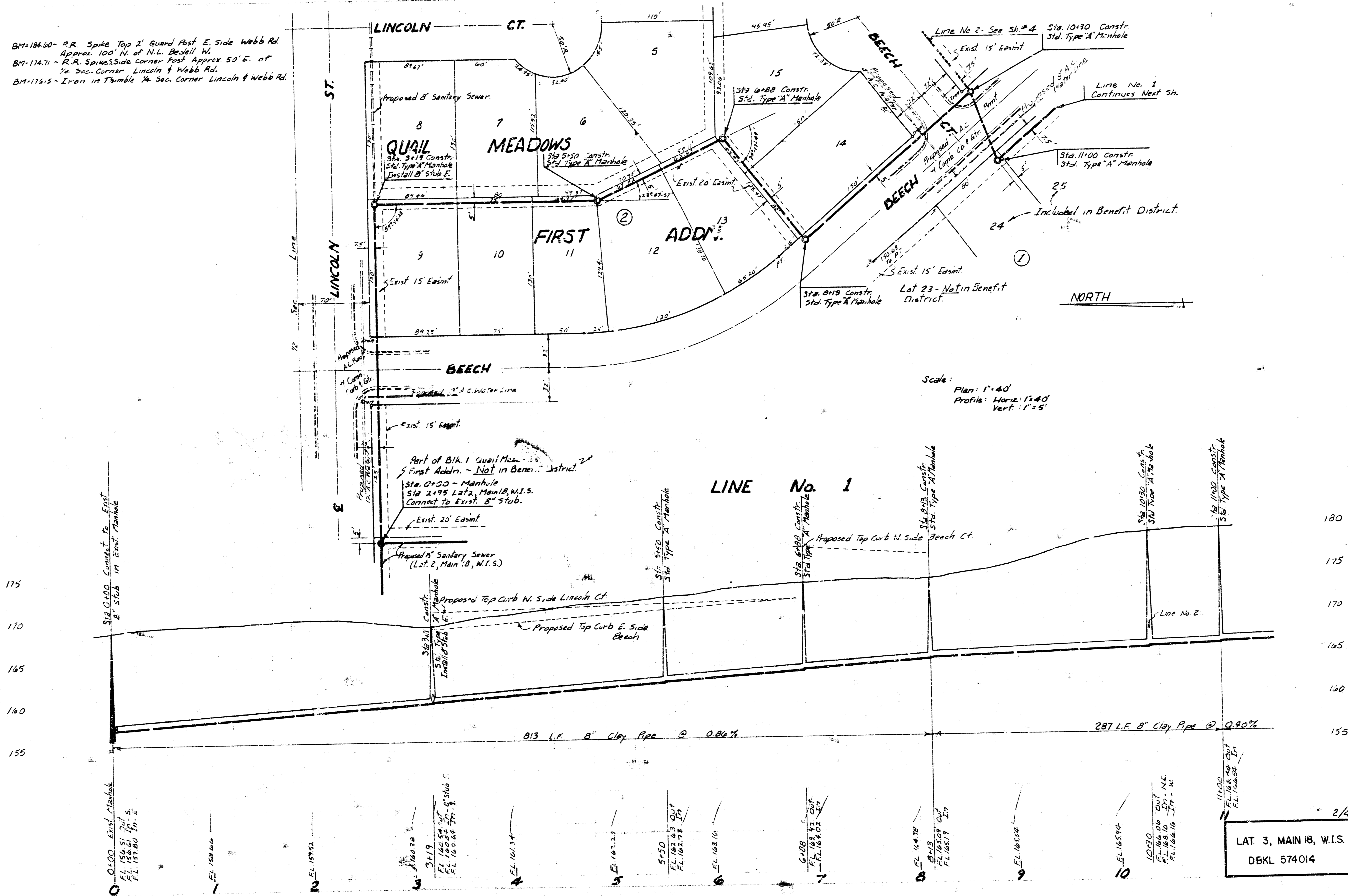
CITY OF WICHITA, KANSAS

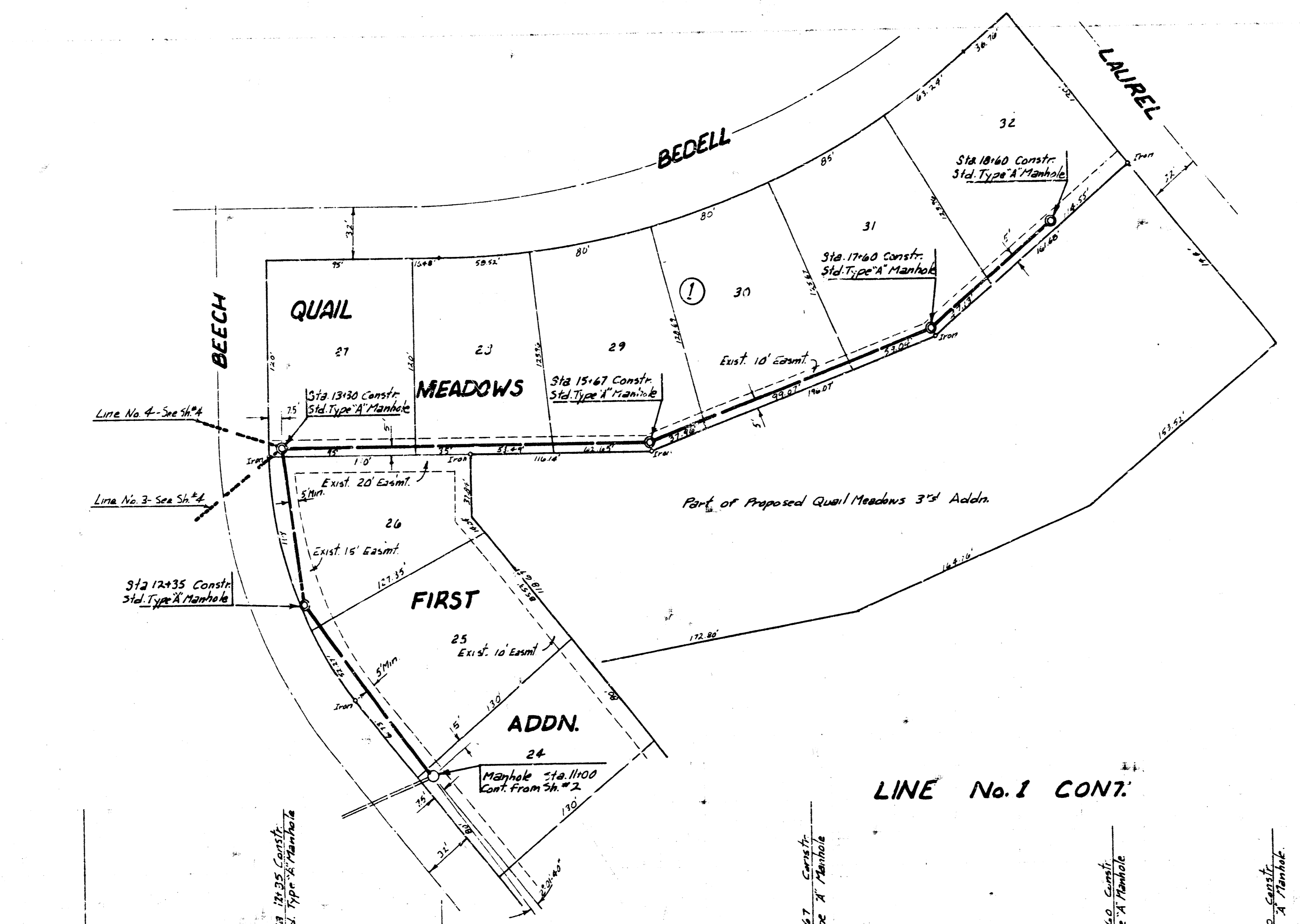
R. W. LINN — CITY ENGINEER

DATE: PROJ. NO. DBKL574014



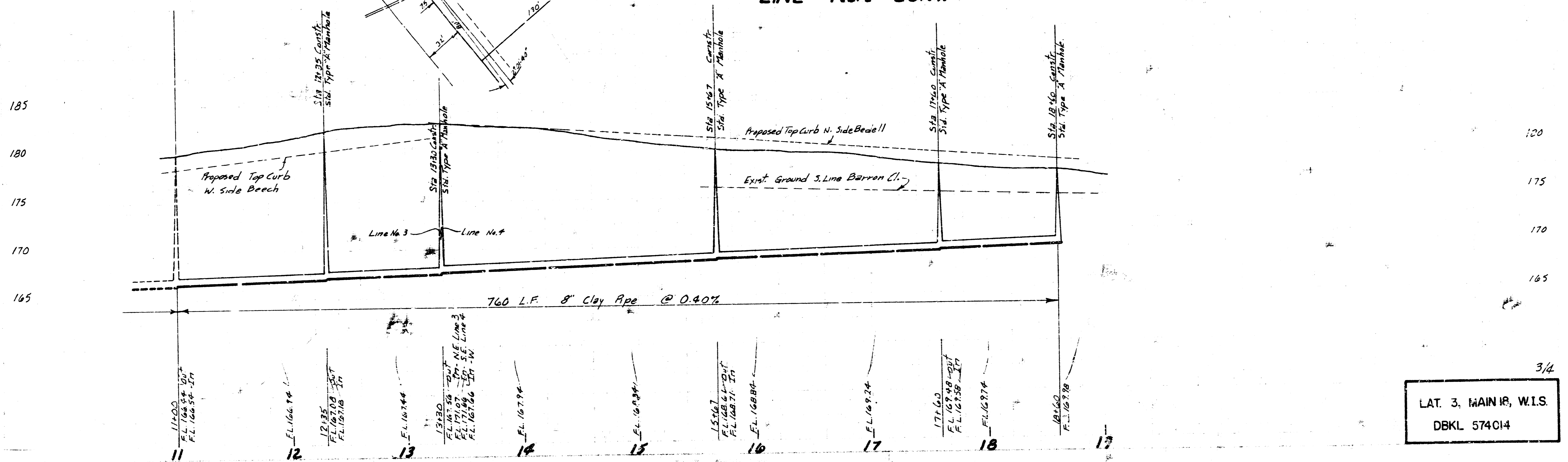
BM-18460 - P.R. Spike Top 2' Guard Post E. Side Webb Rd
 Approx. 100' N. of N.L. Bejell W.
 BM-17471 - R.R. Spike Side Corner Post Approx. 50' E. of
 1/4 Sec. Corner Lincoln & Webb Rd.
 BM-17515 - Iron in Thimble 1/4 Sec. Corner Lincoln & Webb Rd.



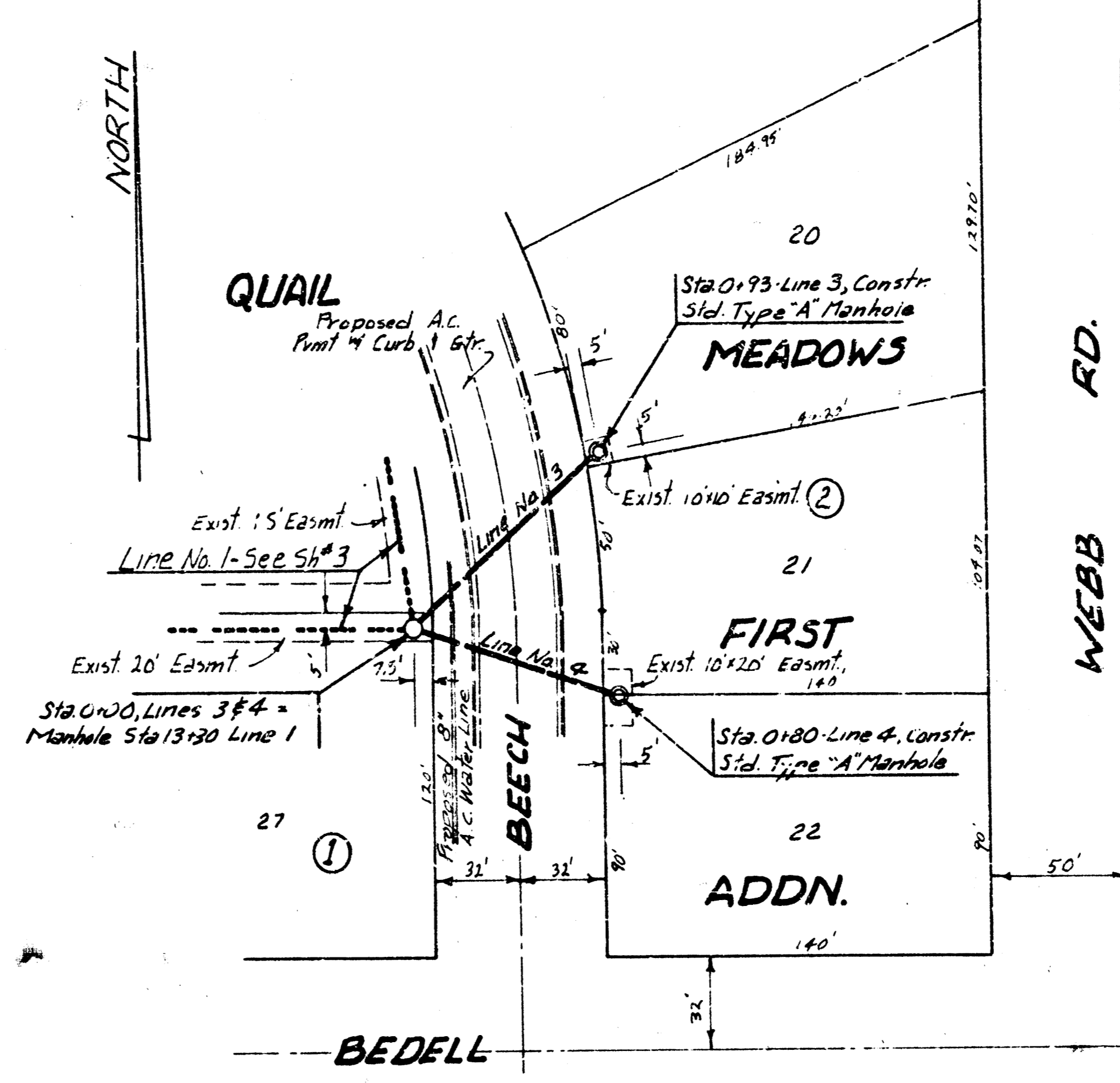
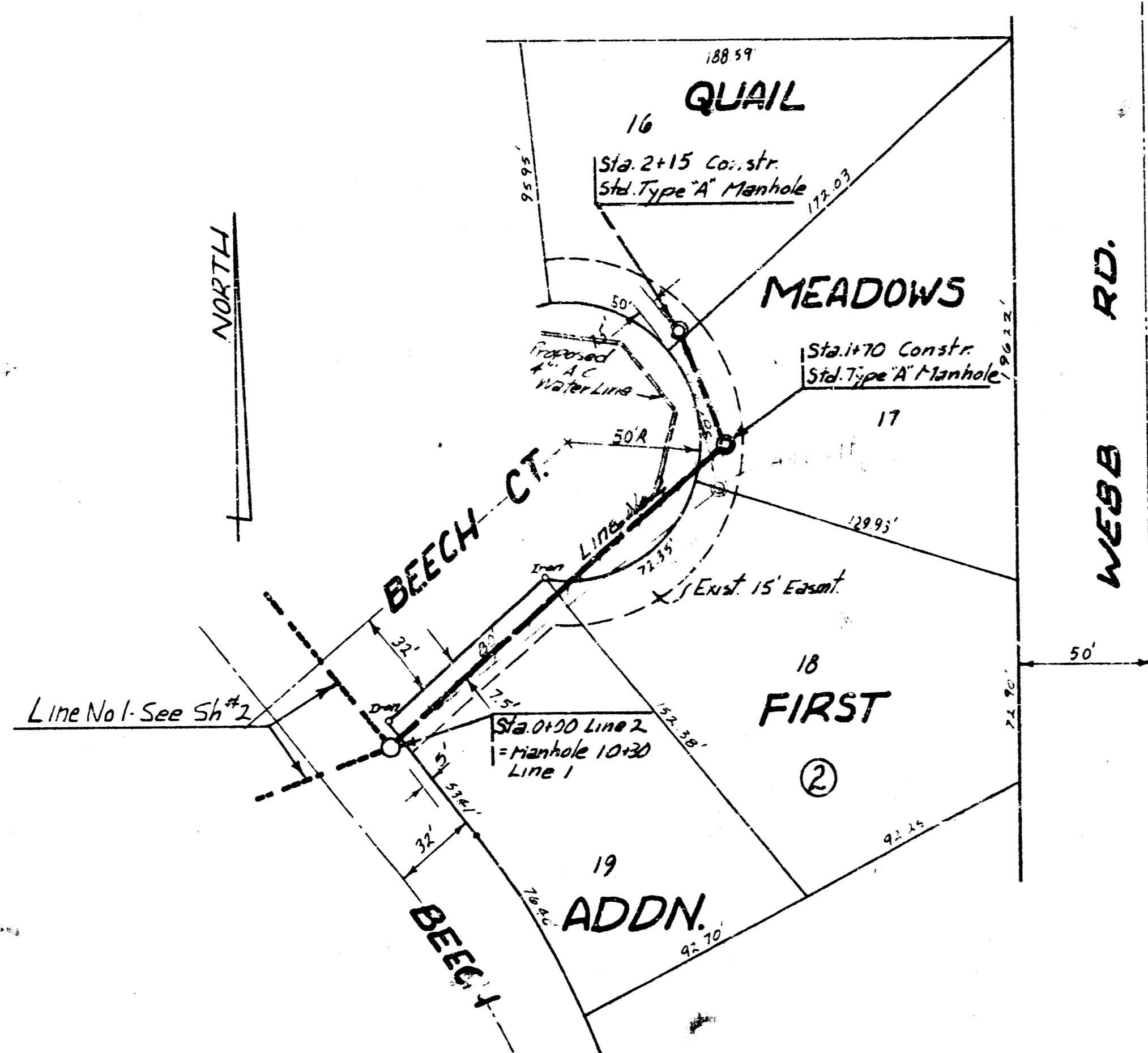


Scale: Plan: 1"=40'
 Profile: Horiz. 1"=40'
 Vert: 1"=5'

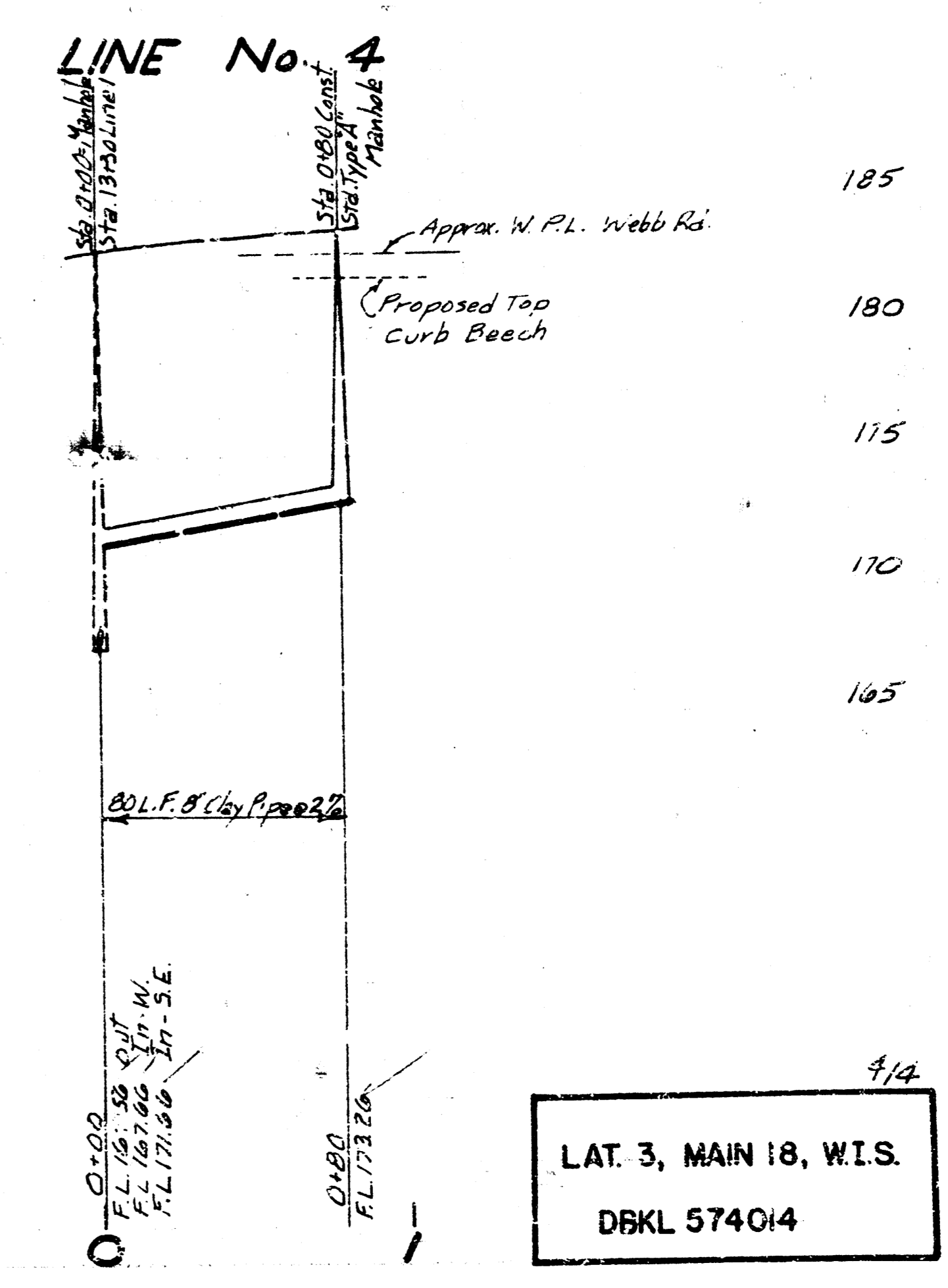
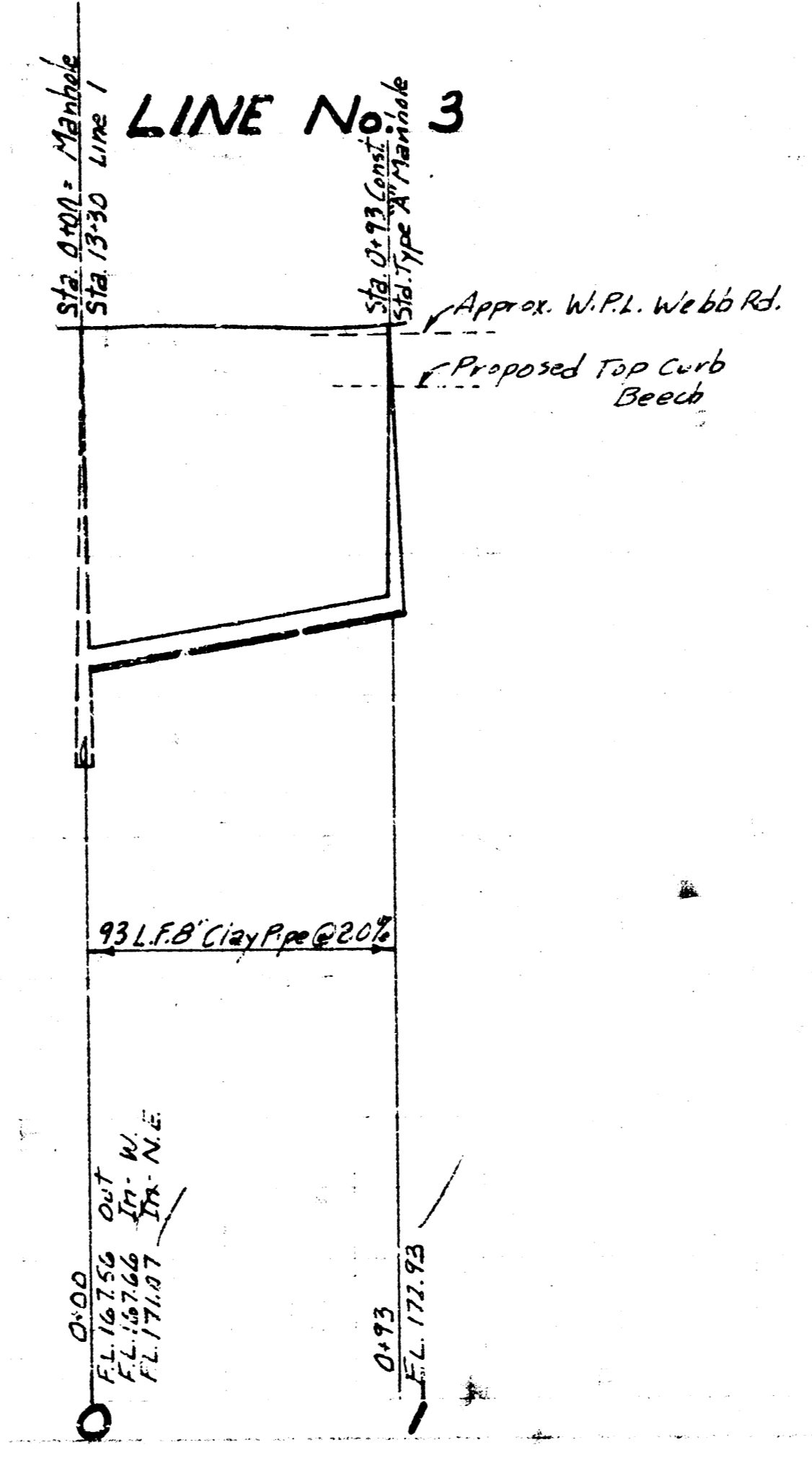
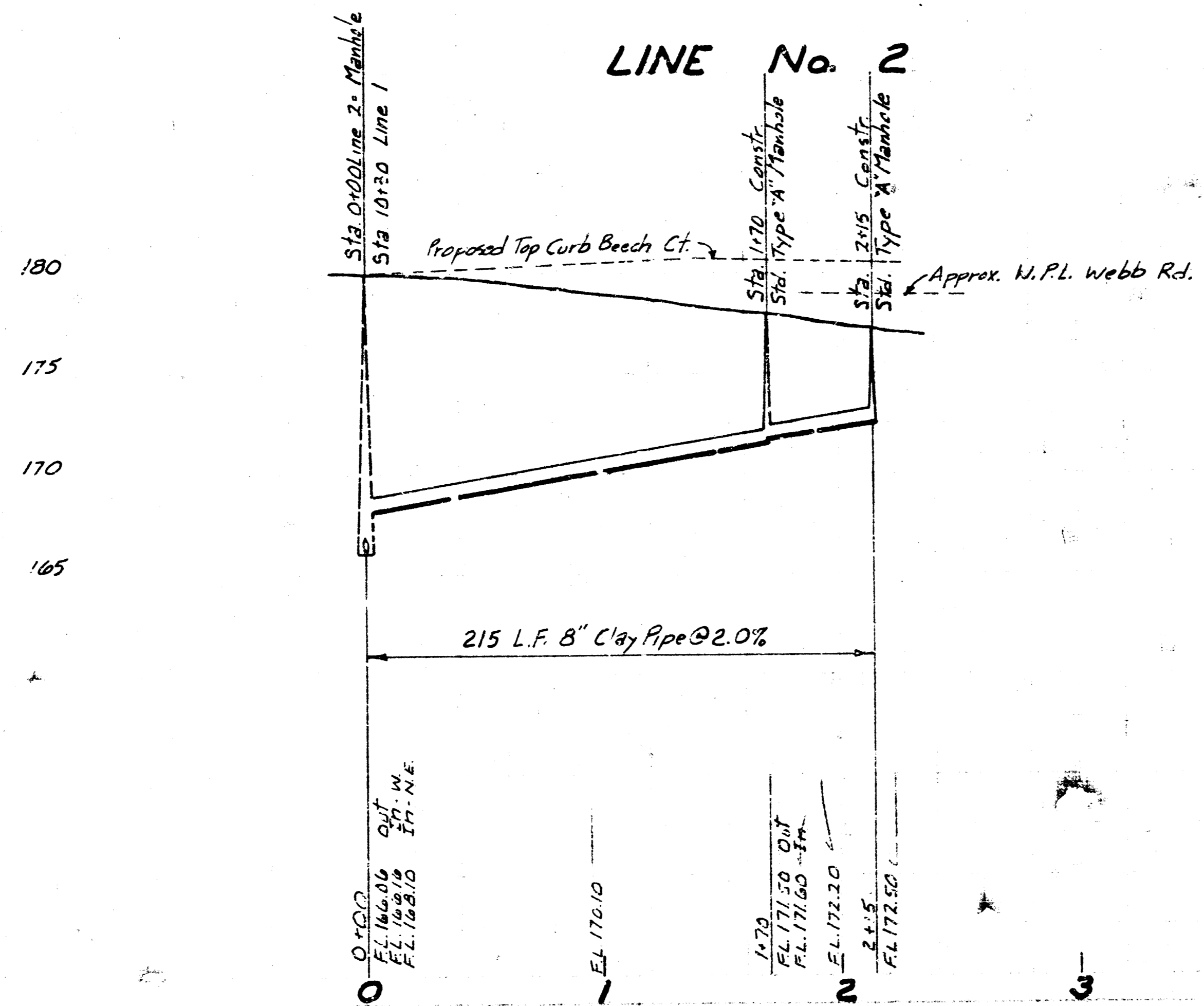
LINE No. 1 CONT.



LAT. 3, MAIN 18, W.I.S.
 DBKL 574C14



Scale:
 Plan: 1" = 40'
 Profile: Horiz: 1" = 40'
 Vert: 1" = 5'



LAT. 3, MAIN 18, W.I.S.
 DBKL 574014