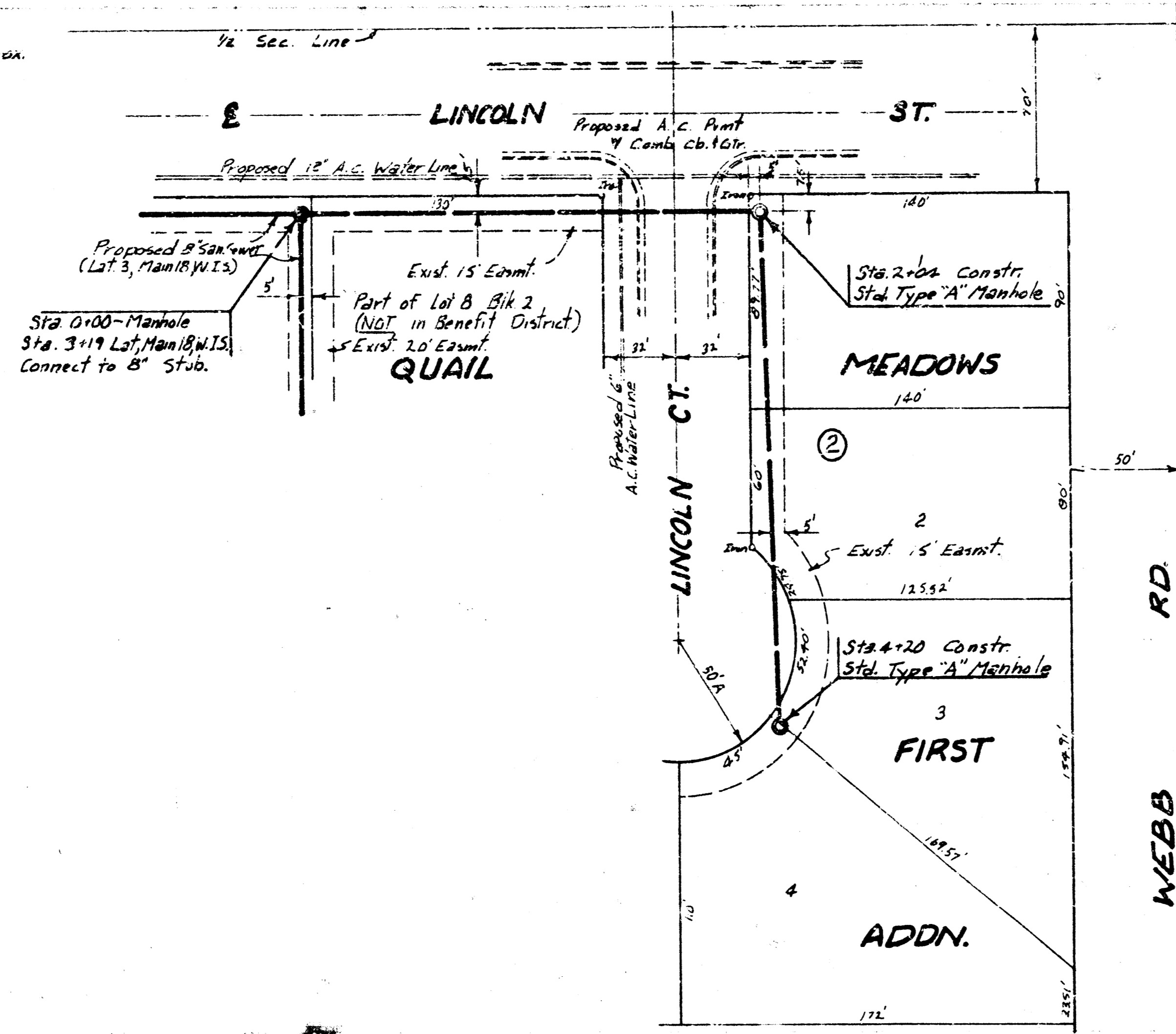
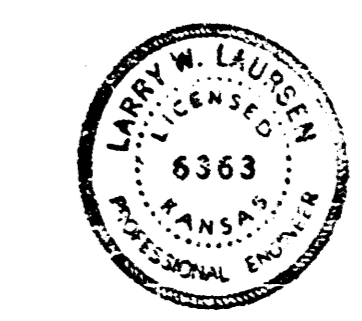
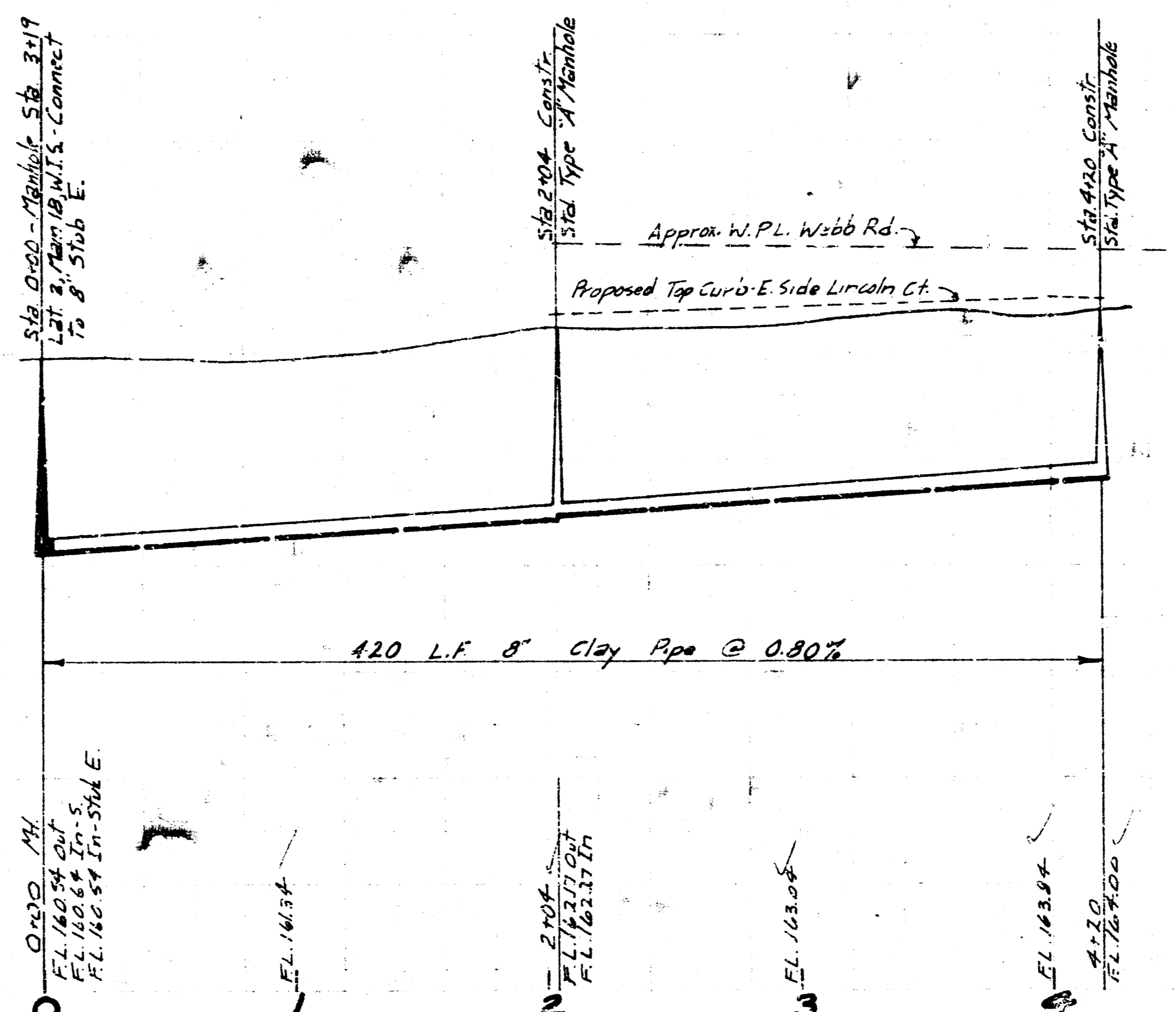


BM 10460 - R.R. Spike Top 2' Guard Post E. Side Webb Rd. Approx. 100' N. of N.L. Bedell W.
 BM 17671 - R.R. Spike S. Side Corner Post Approx. 50' E. of 1/4 Sec. Corner Lincoln & Webb Rd.
 BM 17615 - Iron 1 1/2" Thimble 1/4 Sec. Corner Lincoln & Webb Rd.



Scale:
 Plan: 1" = 40'
 Profile: Horiz: 1" = 40'
 Vert: 1" = 5'

175
 170
 165
 160



LAT. 4, MAIN 18, W.I.S.
 CITY OF WICHITA, KANSAS
 R.W. LINN - CITY ENGINEER
 DATE: PROJ. NO. DBKL 57405