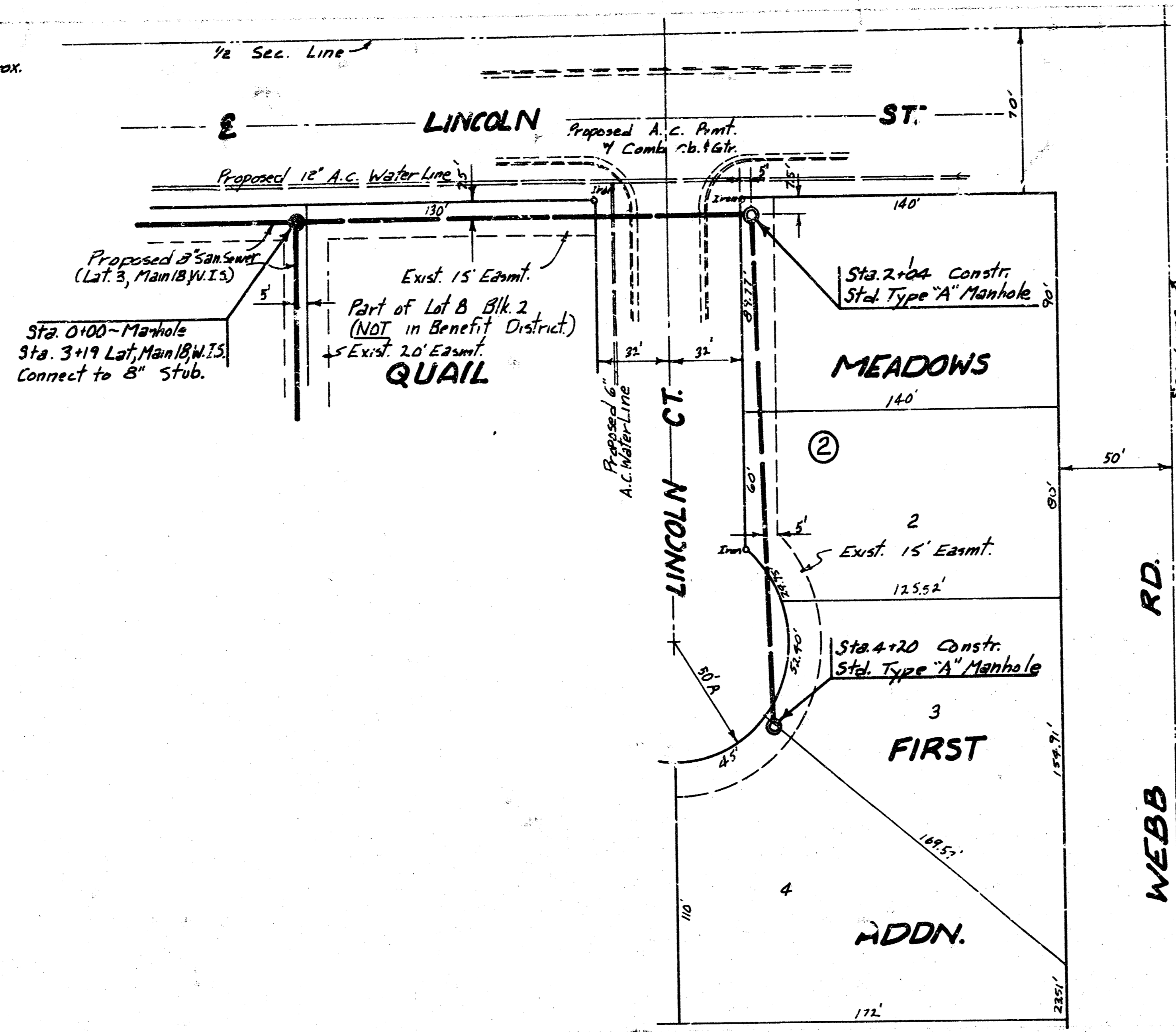
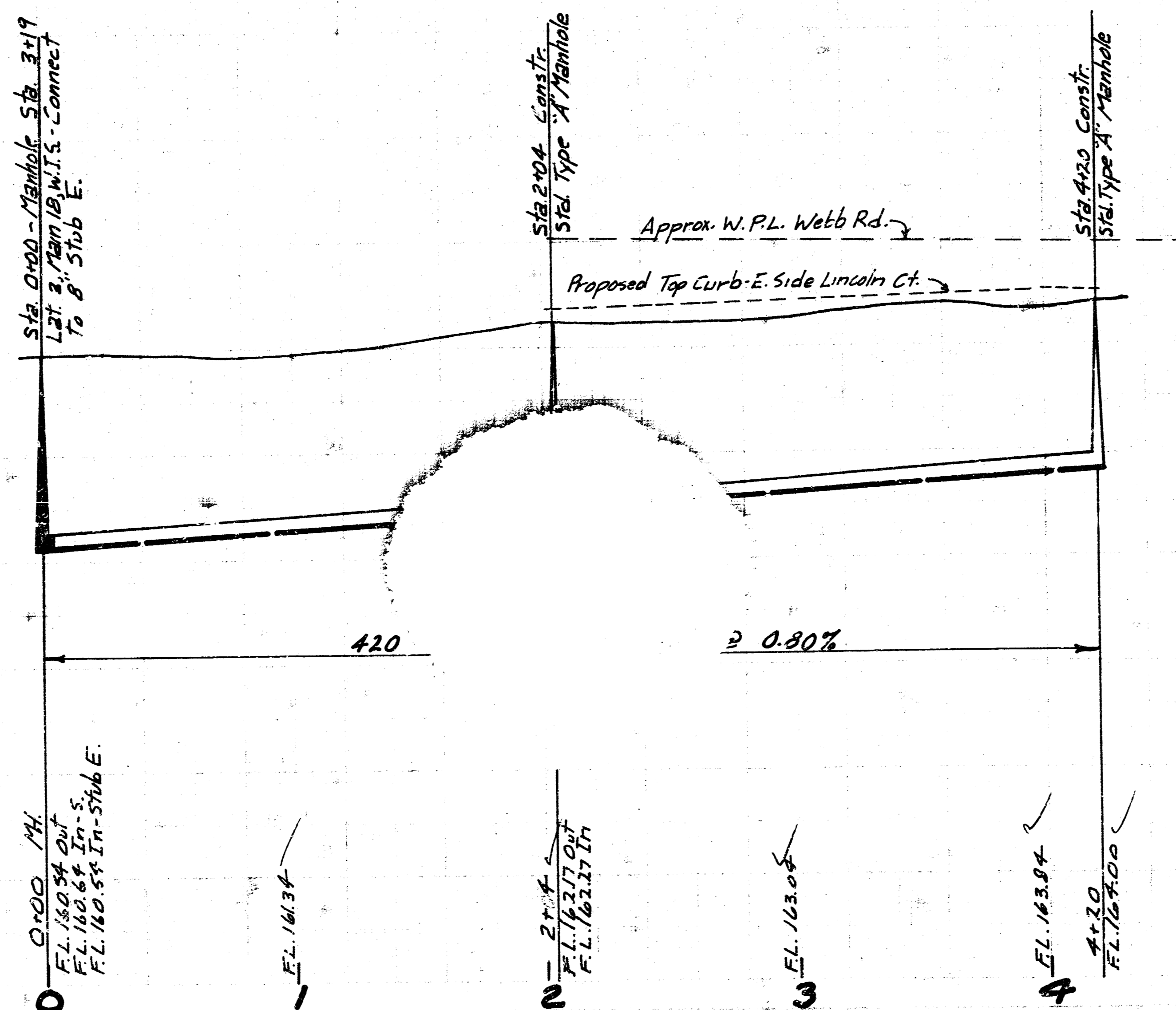


BM=184.60 - R.R. Spike Top 2' Guard Post E. Side Webb Rd. Approx. 100' N. of N.L. Bedell W.
 BM=174.71 - R.R. Spike S. Side Corner Post Approx. 50' E. of 1/4 Sec. Corner Lincoln & Webb Rd.
 BM=174.15 - Iron in Thimble 1/4 Sec. Corner Lincoln & Webb Rd.



Scale:
 Plan: 1"=40'
 Profile: Horiz.: 1"=40'
 Vert.: 1"=5'

175
 170
 165
 160



175
 170
 165
 160



LAT. 4, MAIN 18, W.I.S.
 CITY OF WICHITA, KANSAS
 R.W. LINN - CITY ENGINEER
 DATE: PROJ. NO. DBKL574015

1899
 4884