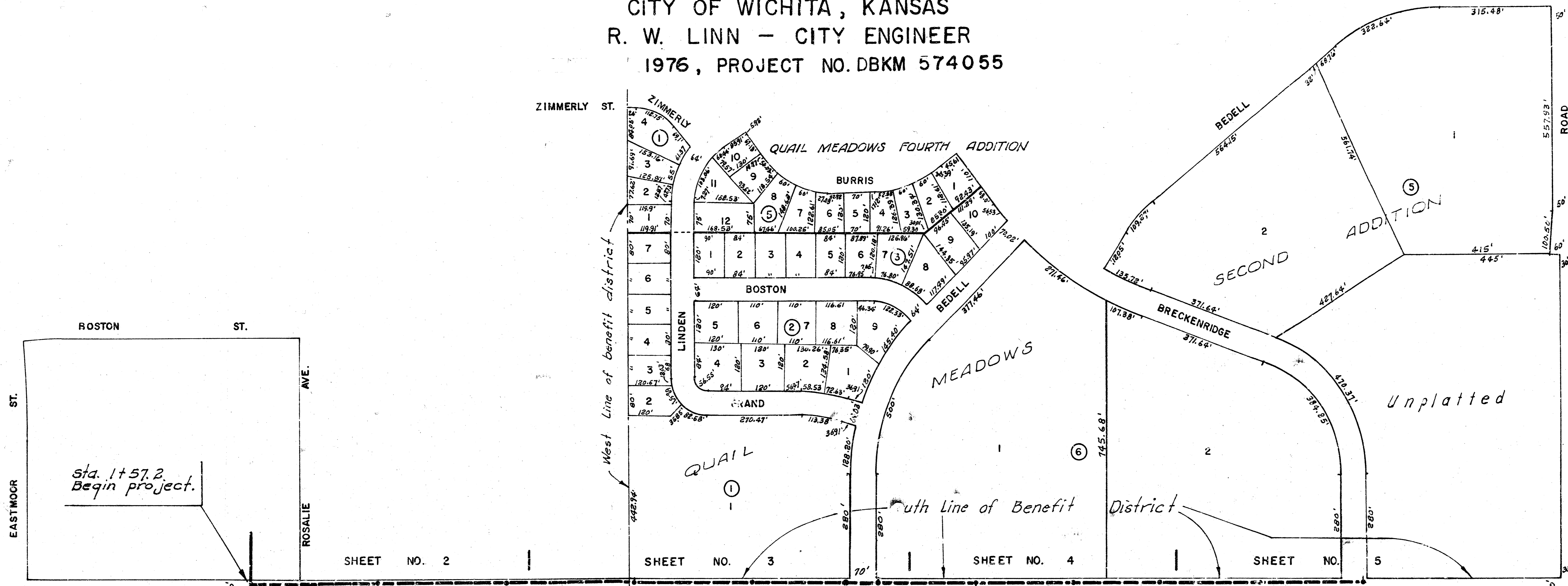


MAIN 19, WAR INDUSTRIES SEWER

CITY OF WICHITA, KANSAS

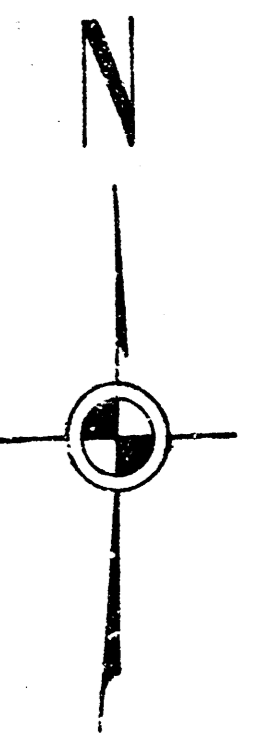
R. W. LINN - CITY ENGINEER

1976, PROJECT NO. DBKM 574055

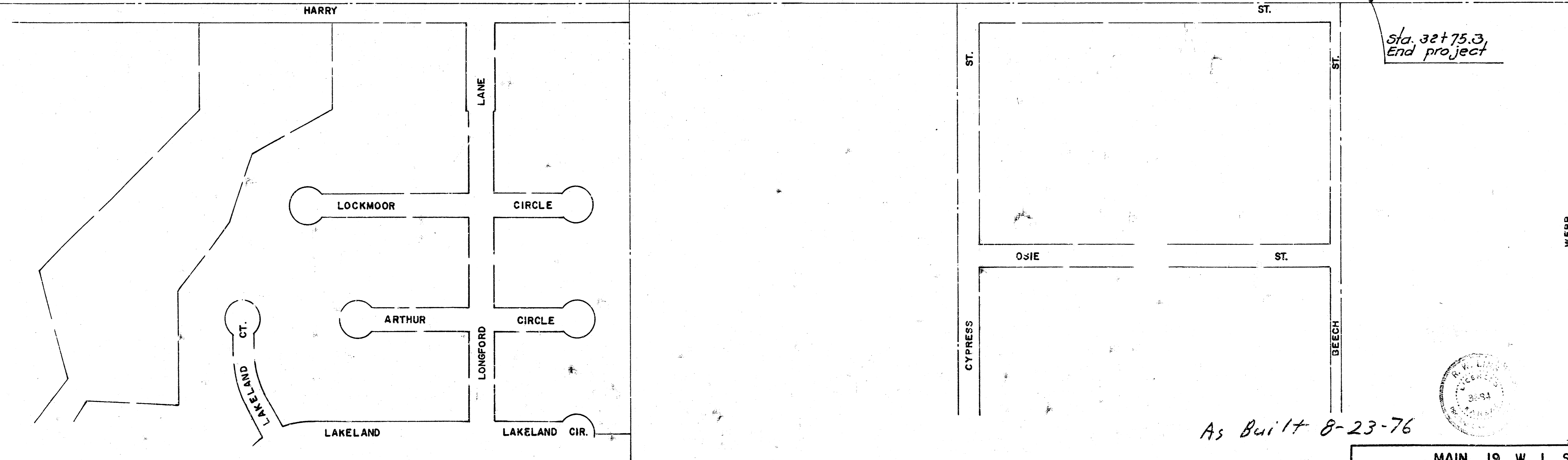


Sta. 1+57.2
Begin project.

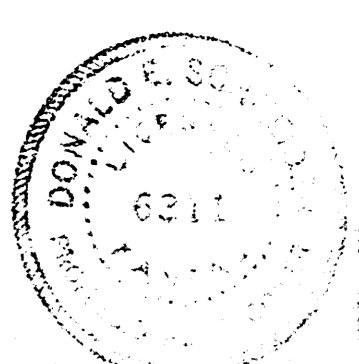
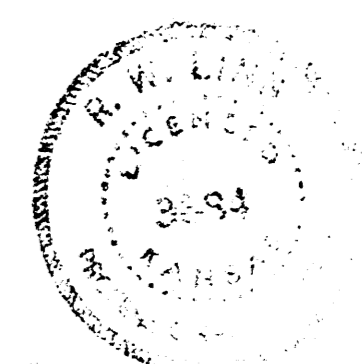
Sta. 32+75.3
End project



SCALE
1" = 150'



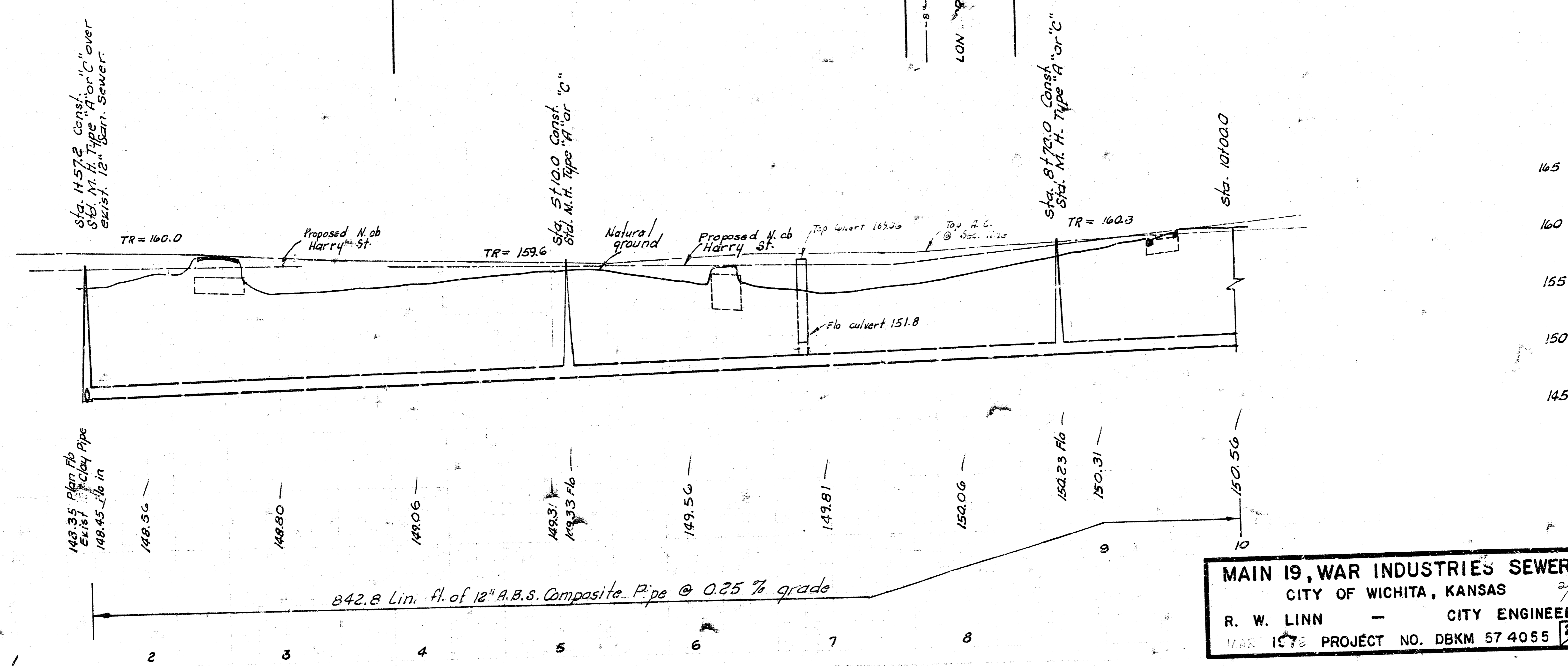
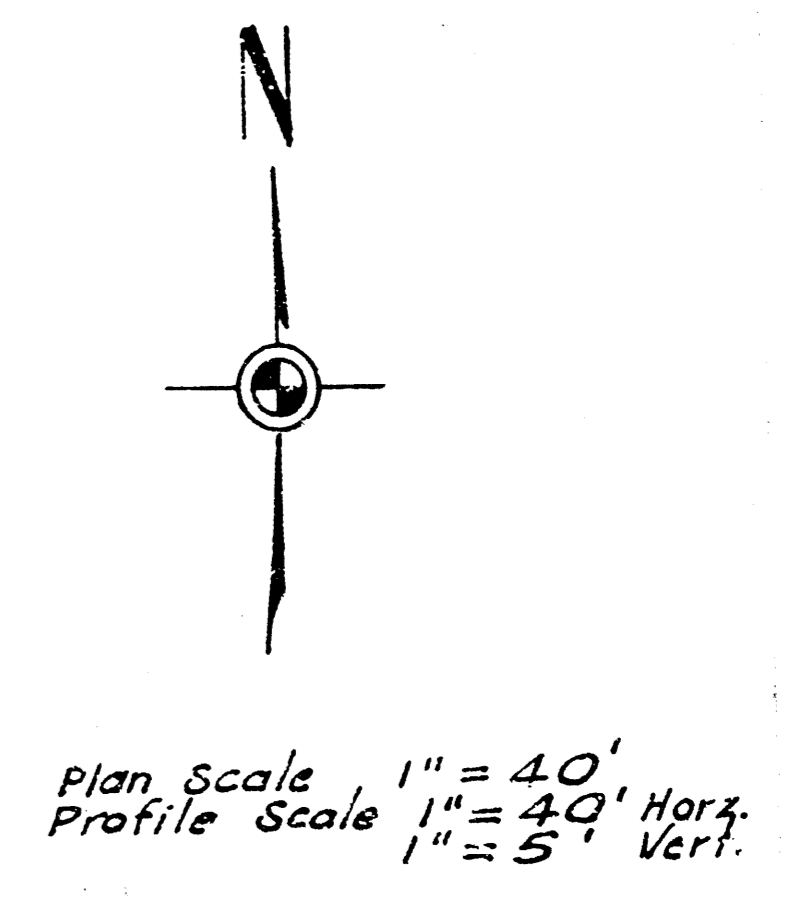
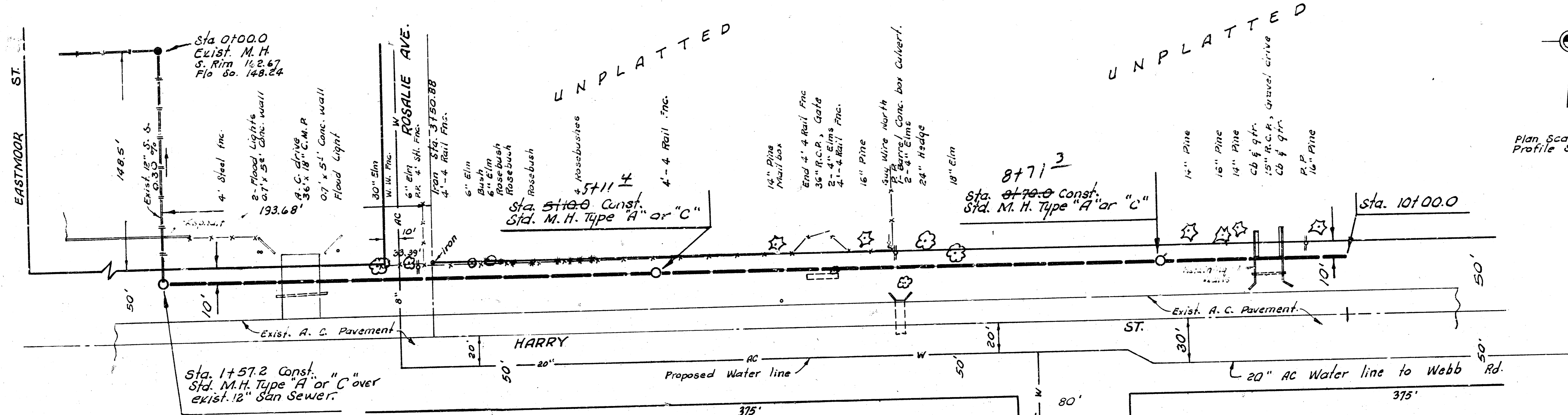
As Built 8-23-76



MAIN 19, W. I. S. 1/5
PROJECT NO. DBKM 57 4055 5

B. M. 161.82 City Std. 42' W. & 48' S. of $\frac{1}{4}$ Sec. cor.
 $\frac{1}{2}$ Mile E. of Rock Rd. & Harry.

B. M. 172.03 Webb Rd. & Harry City B.M. disc.
 48' So. & 46' W. of $\frac{1}{4}$ both.



MAIN 19, WAR INDUSTRIES SEWER
 CITY OF WICHITA, KANSAS
 R. W. LINN — CITY ENGINEER
 PROJECT NO. DBKM 57 4055

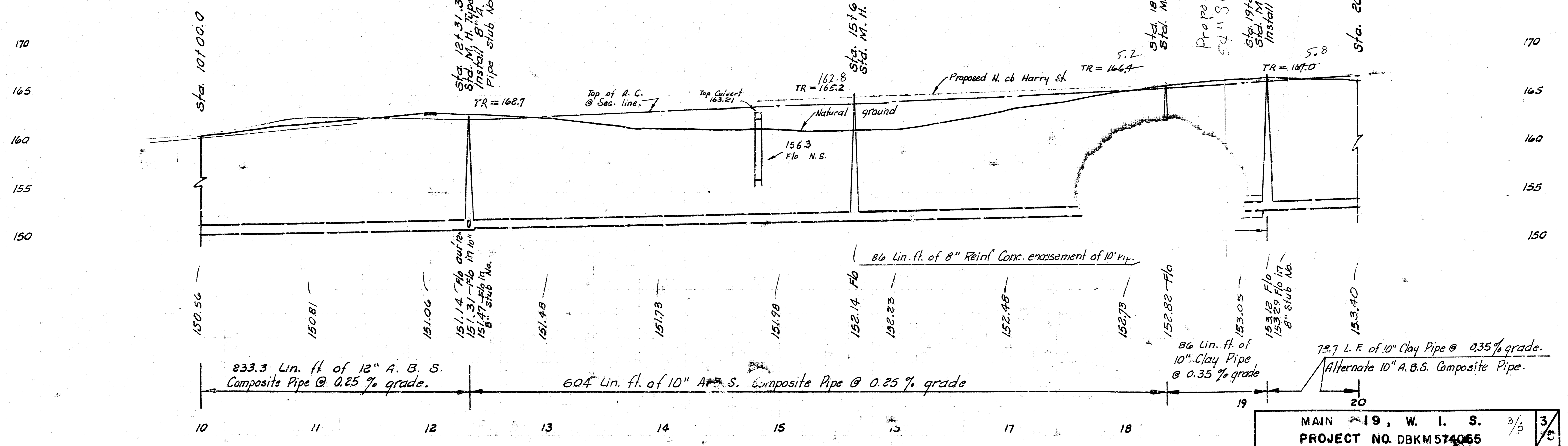
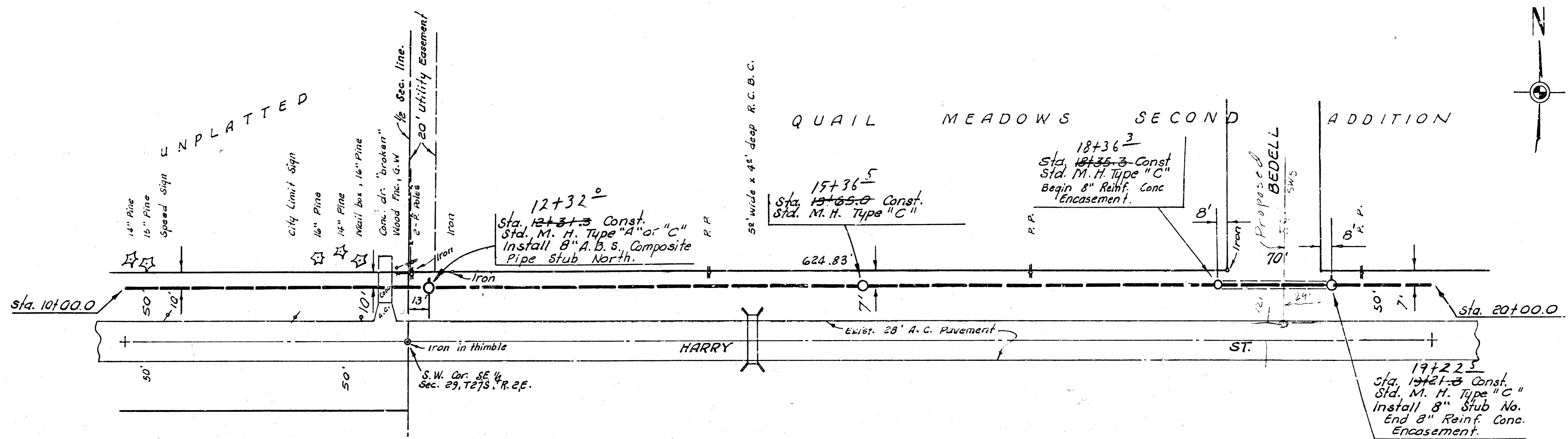
U. R. W.

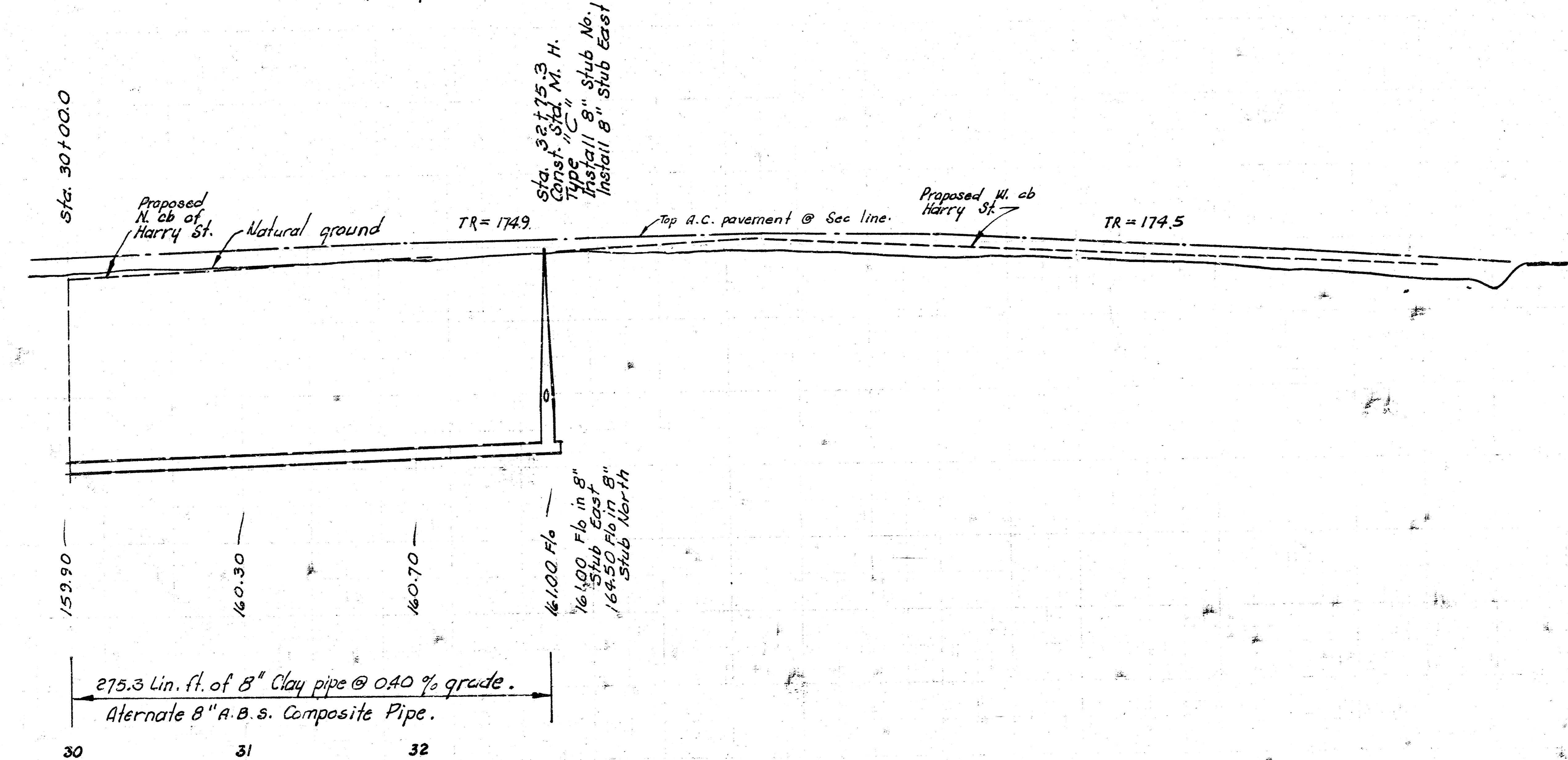
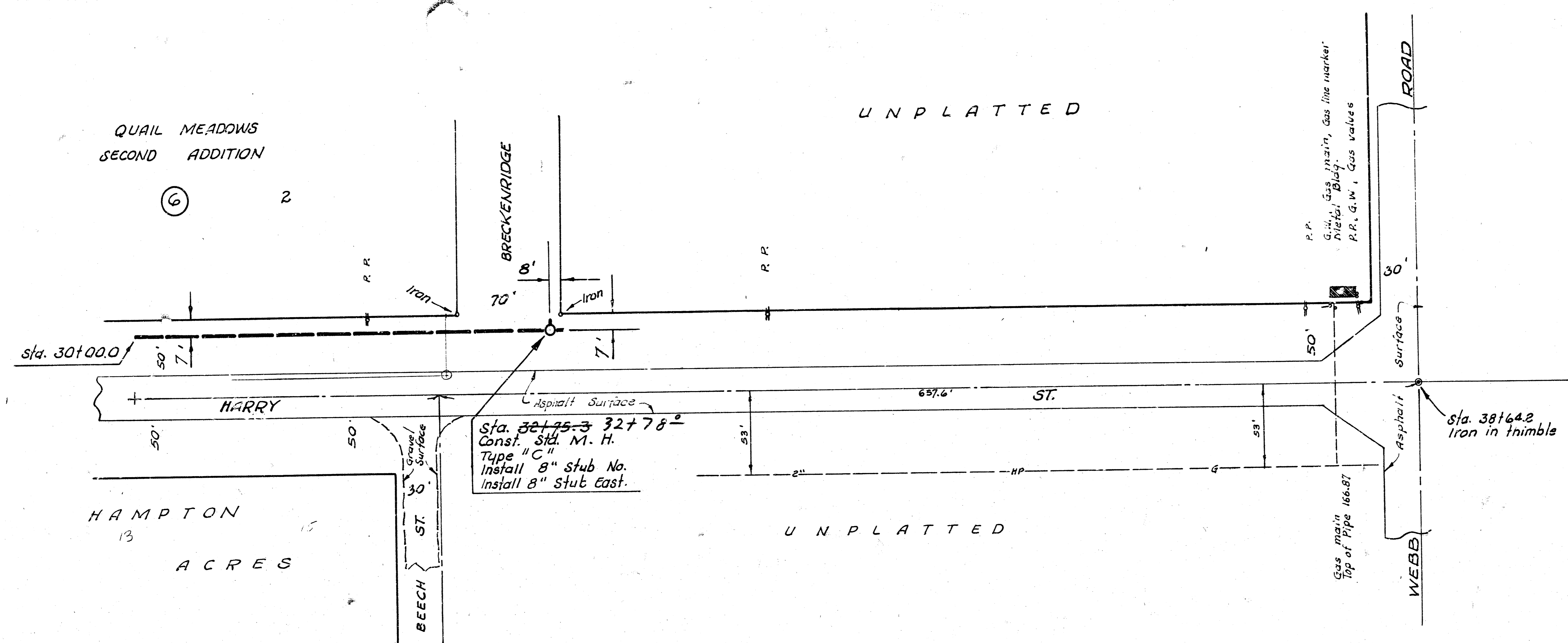
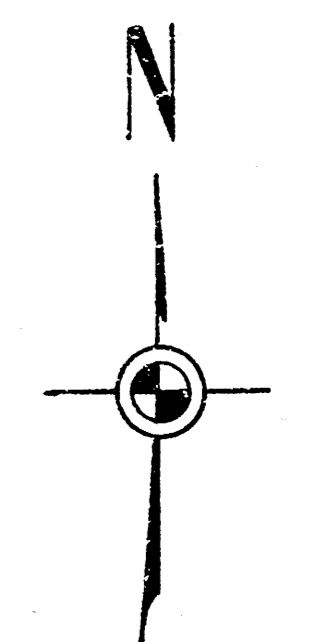
80

165
160
155
150
145

165
160
155
150
145

2-13-1-15





Ground Area
8-1-1-19

8-1-3-5