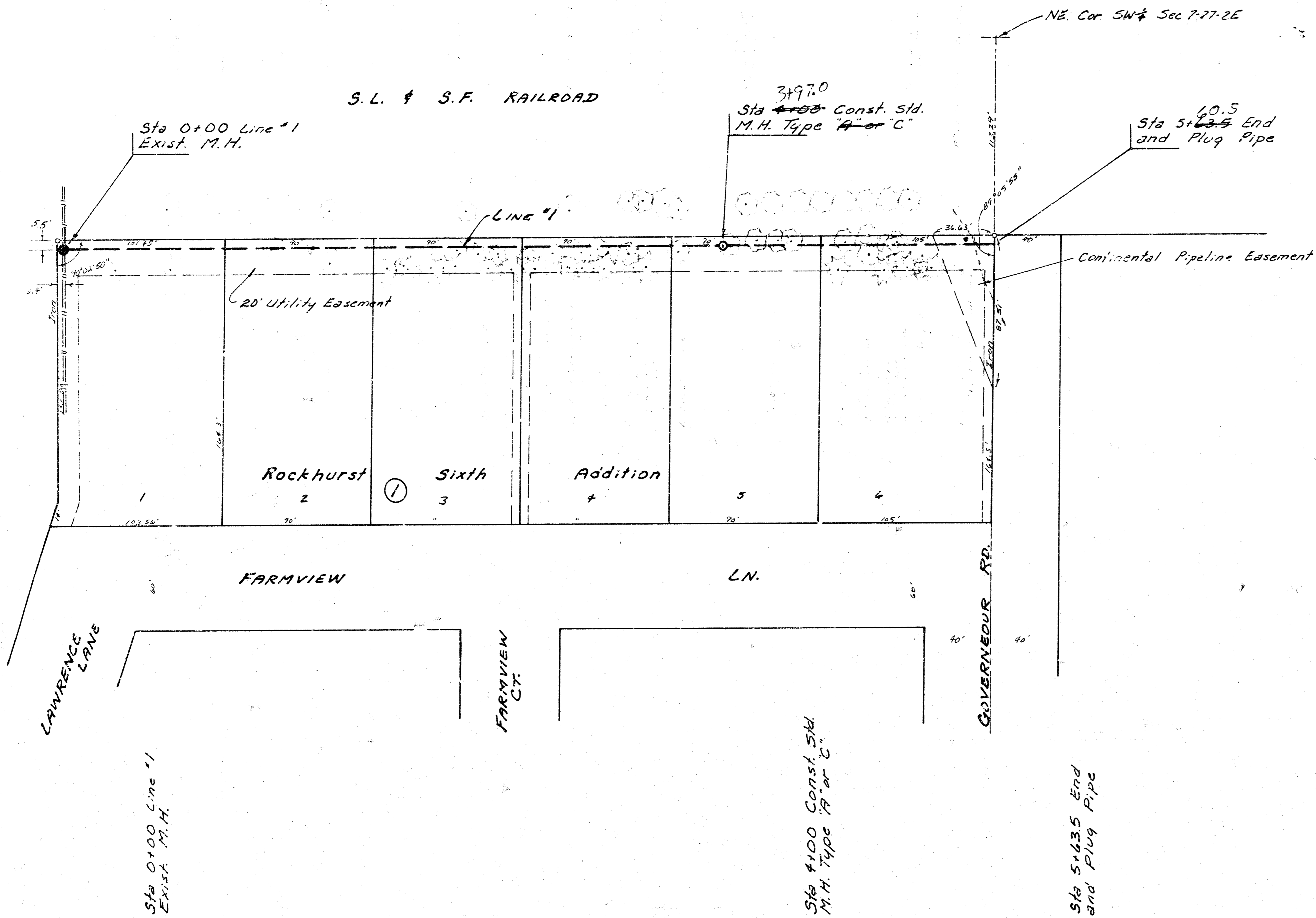


B. Dulca
R. Collins

250.81



Scale Plan 1" = 40'
Profile 1" = 40' Horiz.
1" = 5' Vert.

NOTE: CONTRACTOR SHALL NOTIFY CONTINENTAL PIPELINE COMPANY PRIOR TO DOING ANY WORK ON THEIR EASEMENT.

CONTRACTOR SHALL GIVE PROPERTY OWNERS AND/OR TENANTS OF DEVELOPED PROPERTY DIRECTLY AFFECTED BY THE CONSTRUCTION OF THIS PROJECT A MINIMUM ADVANCE NOTICE OF 48 HOURS PRIOR TO STARTING ANY CONSTRUCTION.

NOTE: TOPS OF M.H.'S SHALL BE SET 0.4' ABOVE EXISTING GROUND EXCEPT WHERE A SPECIFIC ELEVATION IS SHOWN ON PLANS.

B.M. 204.23 "+ " Top of E. Curb of Governour at Aberdeen.

Handwritten notes:
19.3
18.5
18.2

205

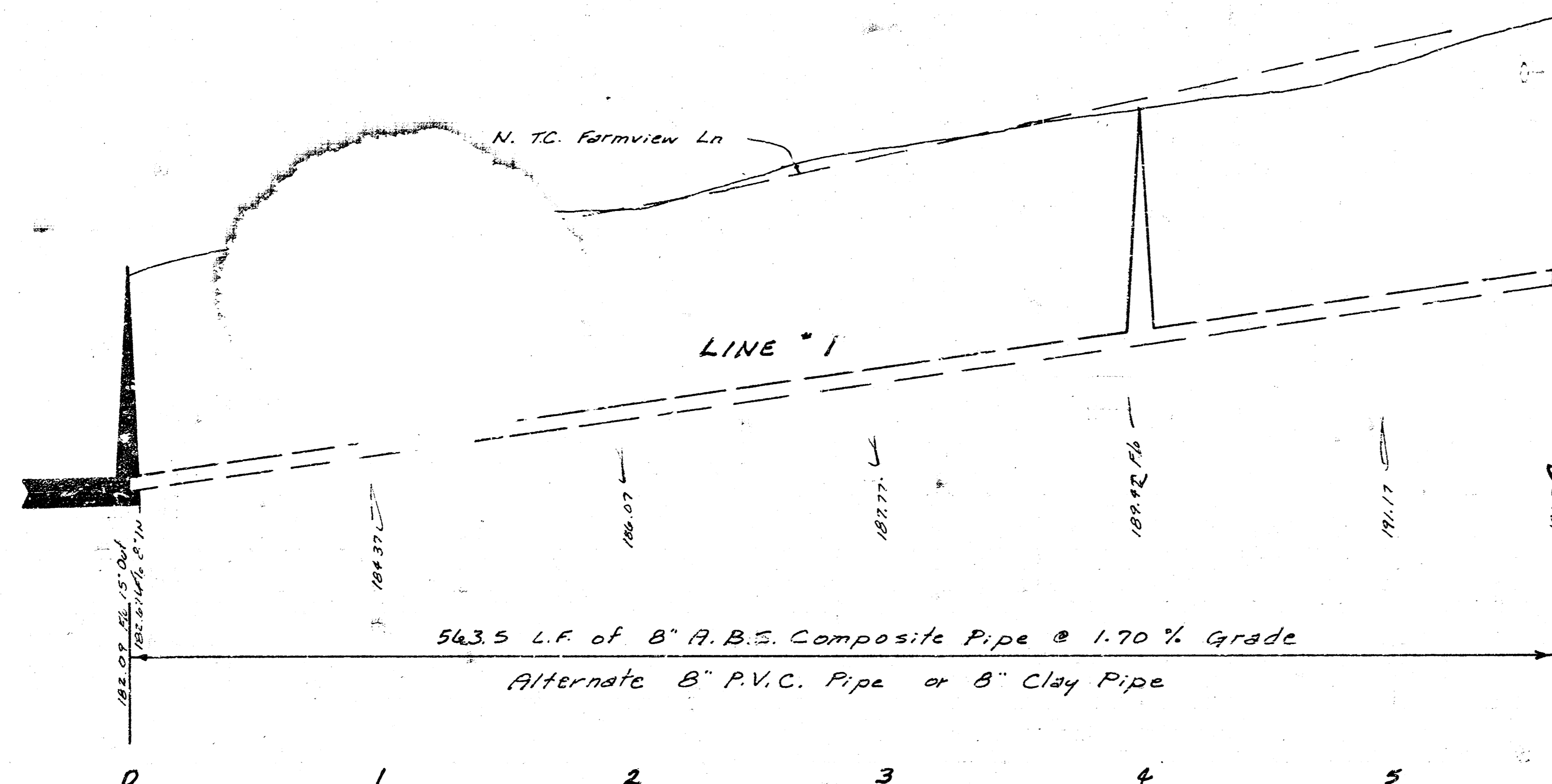
200

195

190

185

180



205

200

195

190

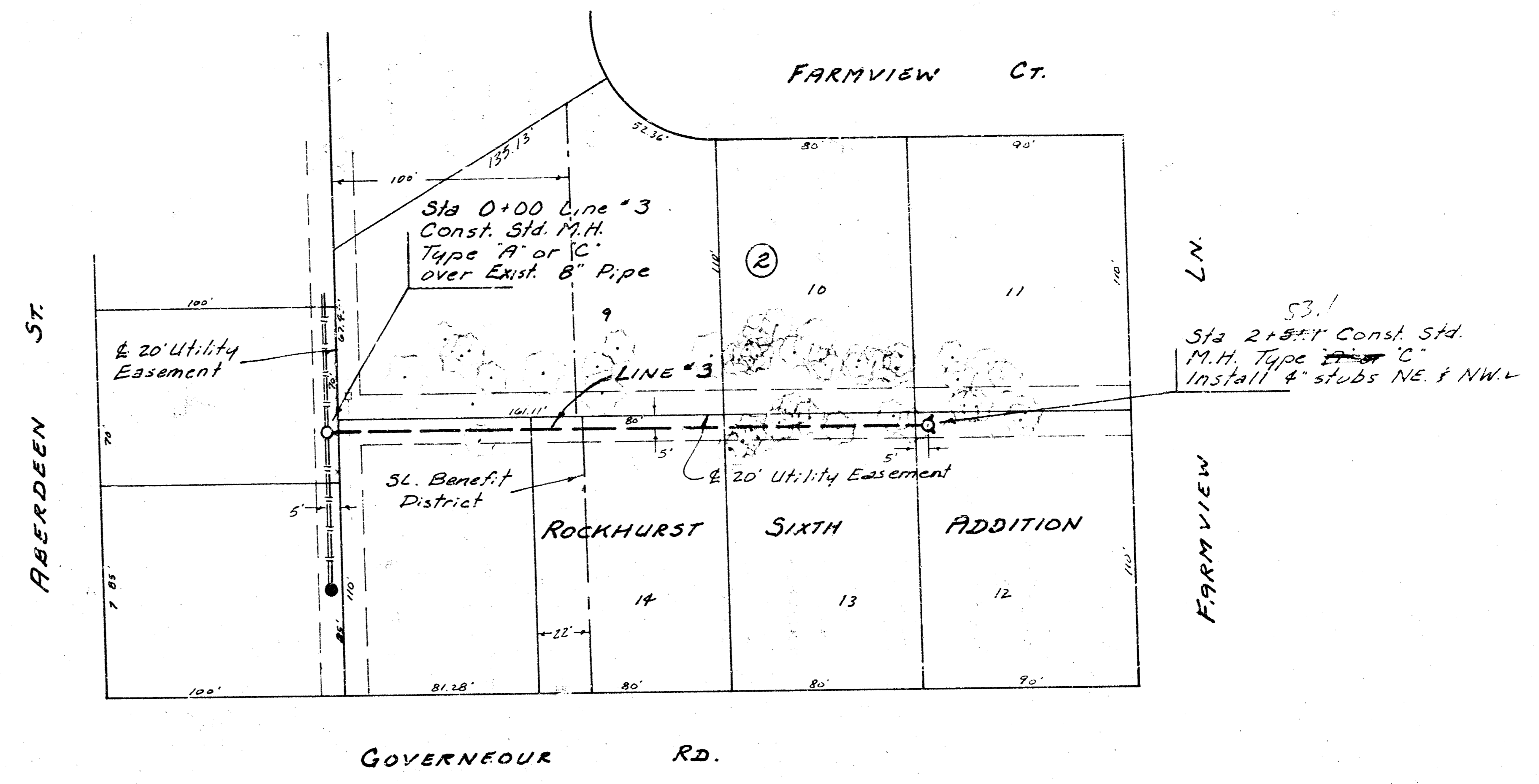
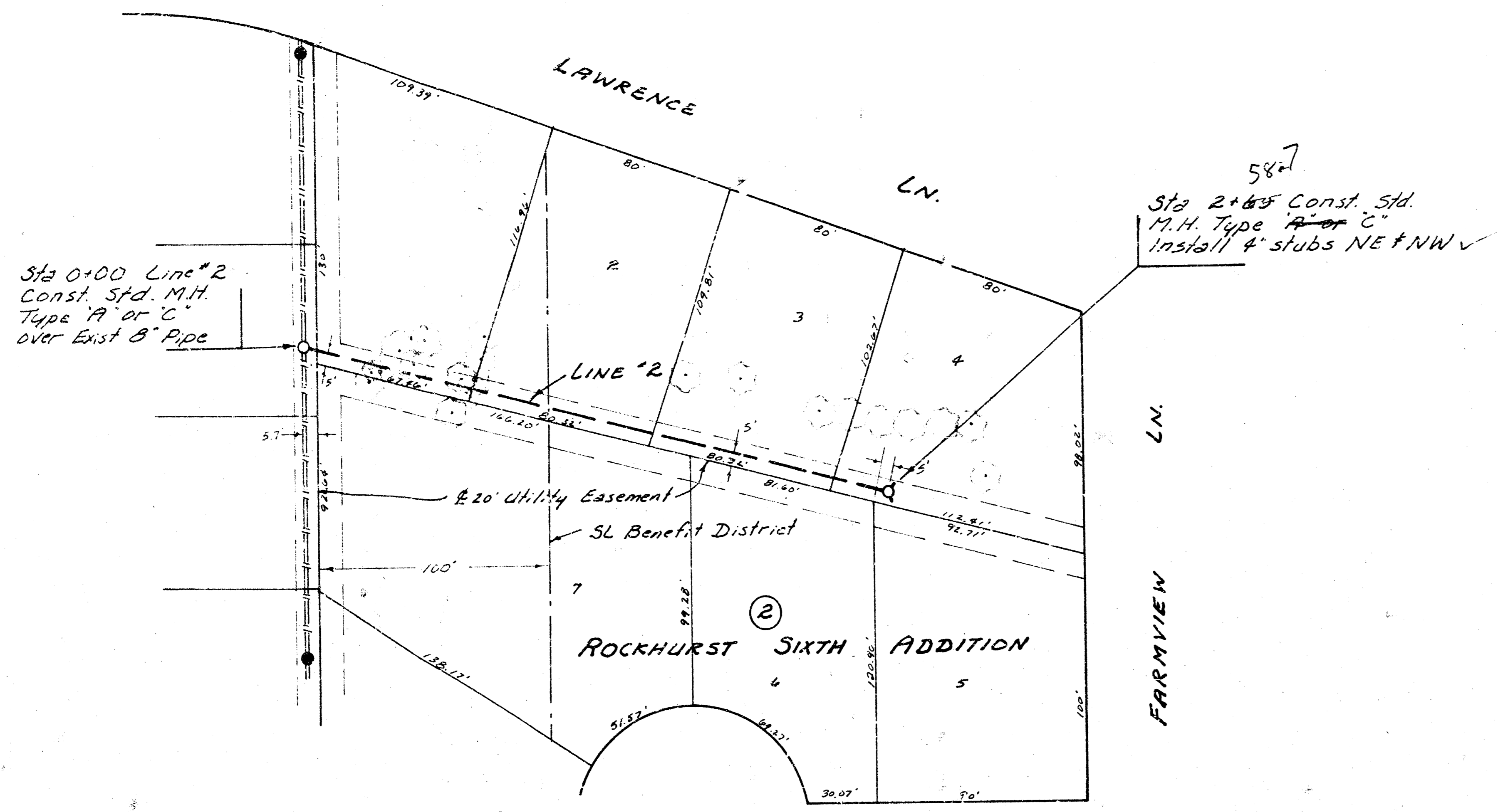
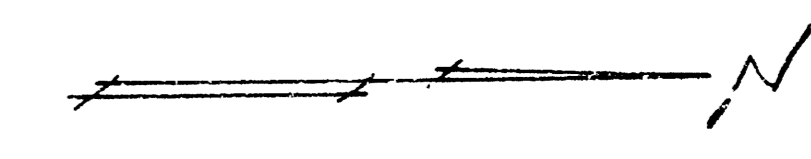
185

LAT 14, MAIN 20, WAR INDUSTRIES SEWER
 CITY OF WICHITA
 R.W. BRUGGEMAN
 DIRECTOR OF ENGINEERING - CITY ENGINEER
 PROJ. NO. 468-76-245-80975-000-000-001



1/2

Scale Plan 1" = 40'
 Profile 1" = 40' Horiz.
 1" = 5' Vert.

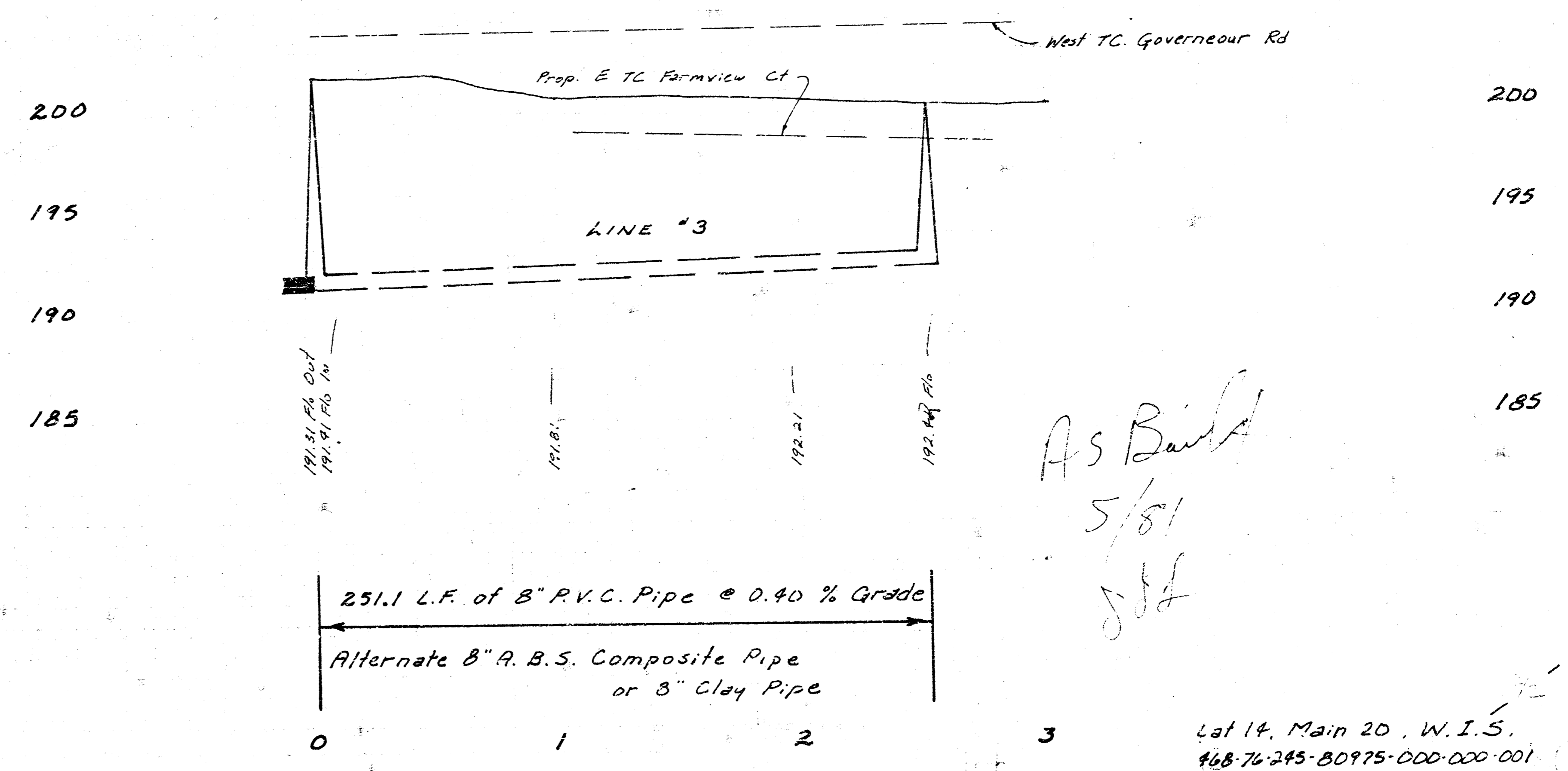
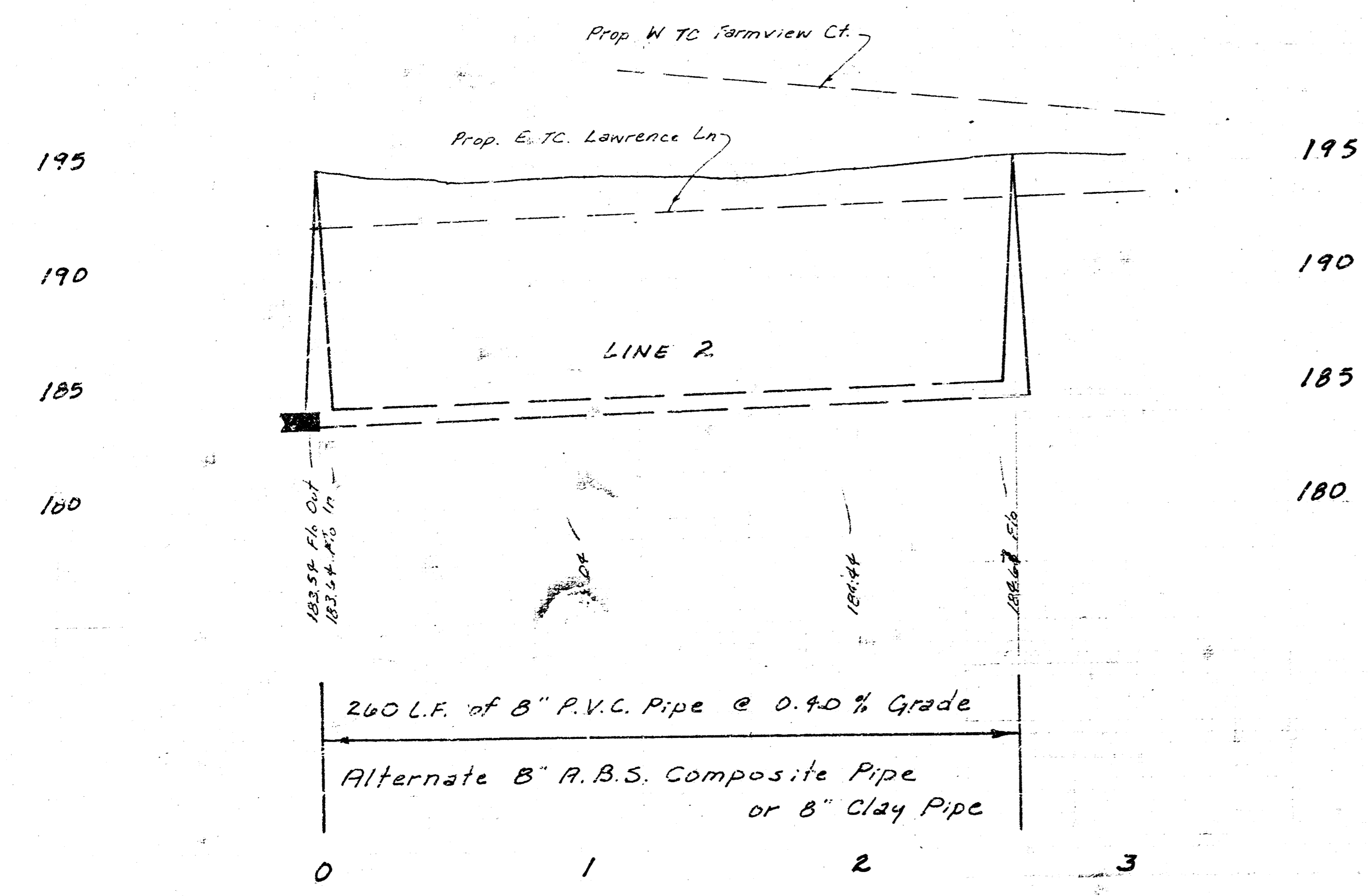


Sta 0+00 Line #2
 Const. Std. M.H.
 Type "A" or "C"
 over Exst. 8" Pipe

Sta 2+85.7 Const. Std.
 M.H. Type "A" or "C"
 Install 4' stubs NE & NW

Sta 0+00 Line #3
 Const. Std. M.H.
 Type "A" or "C"
 over Exst. 8" Pipe

Sta 2+85.7 Const. Std.
 M.H. Type "A" or "C"
 Install 4' stubs NE & NW



AS BUILT
 5/8/11
 JBT