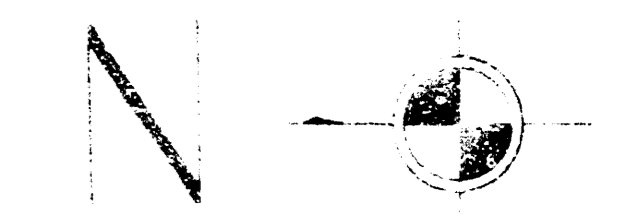
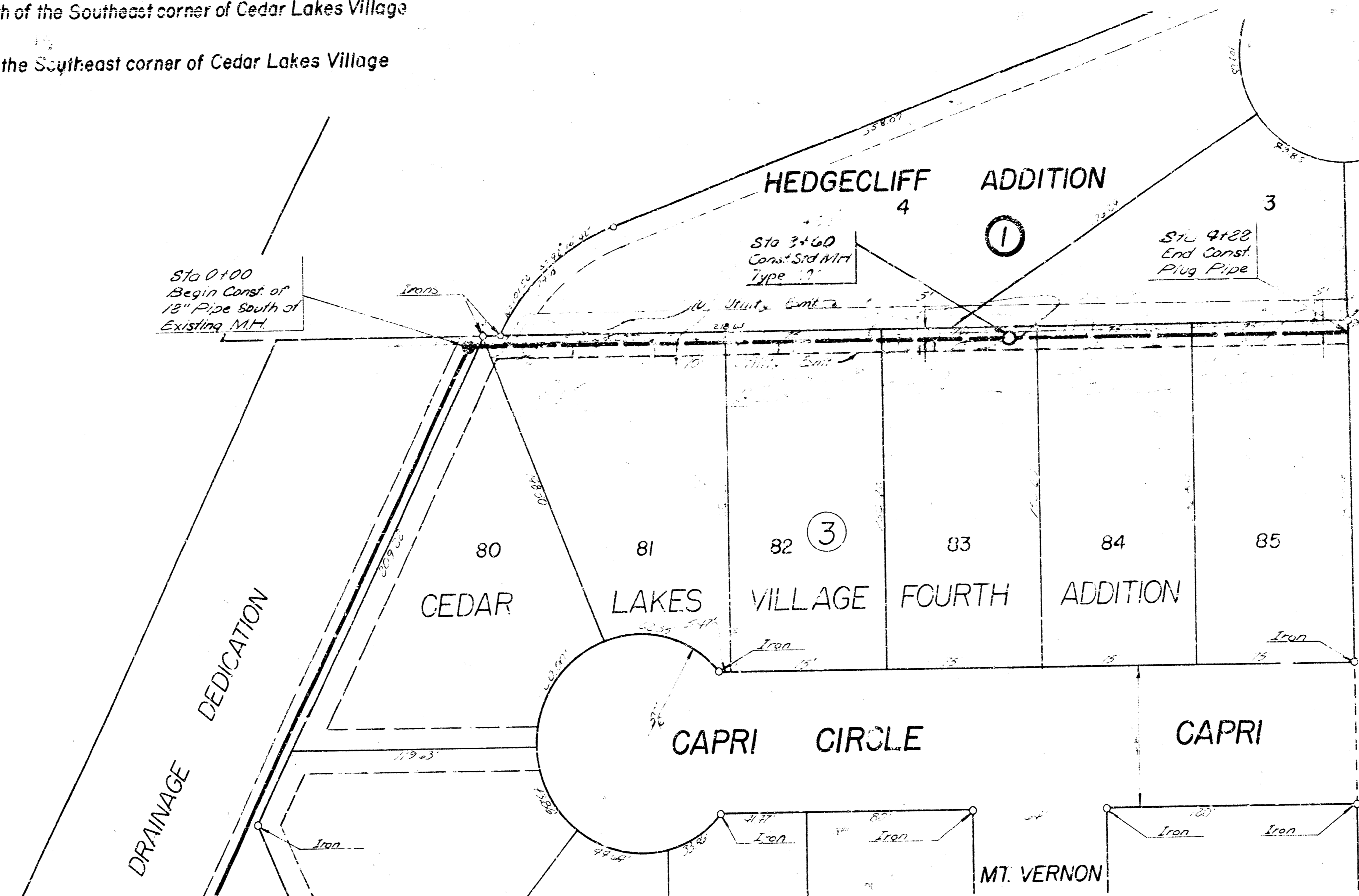


B.M. 160.39 "FO" Penny Nail in East side Gate Post approximately 6.0 ft. South of the Southeast corner of Cedar Lakes Village 4th Addition.
 B.M. 159.45 R.R. Spike in West side of tree approximately 480 ft. North of the Southeast corner of Cedar Lakes Village 4th Addition.

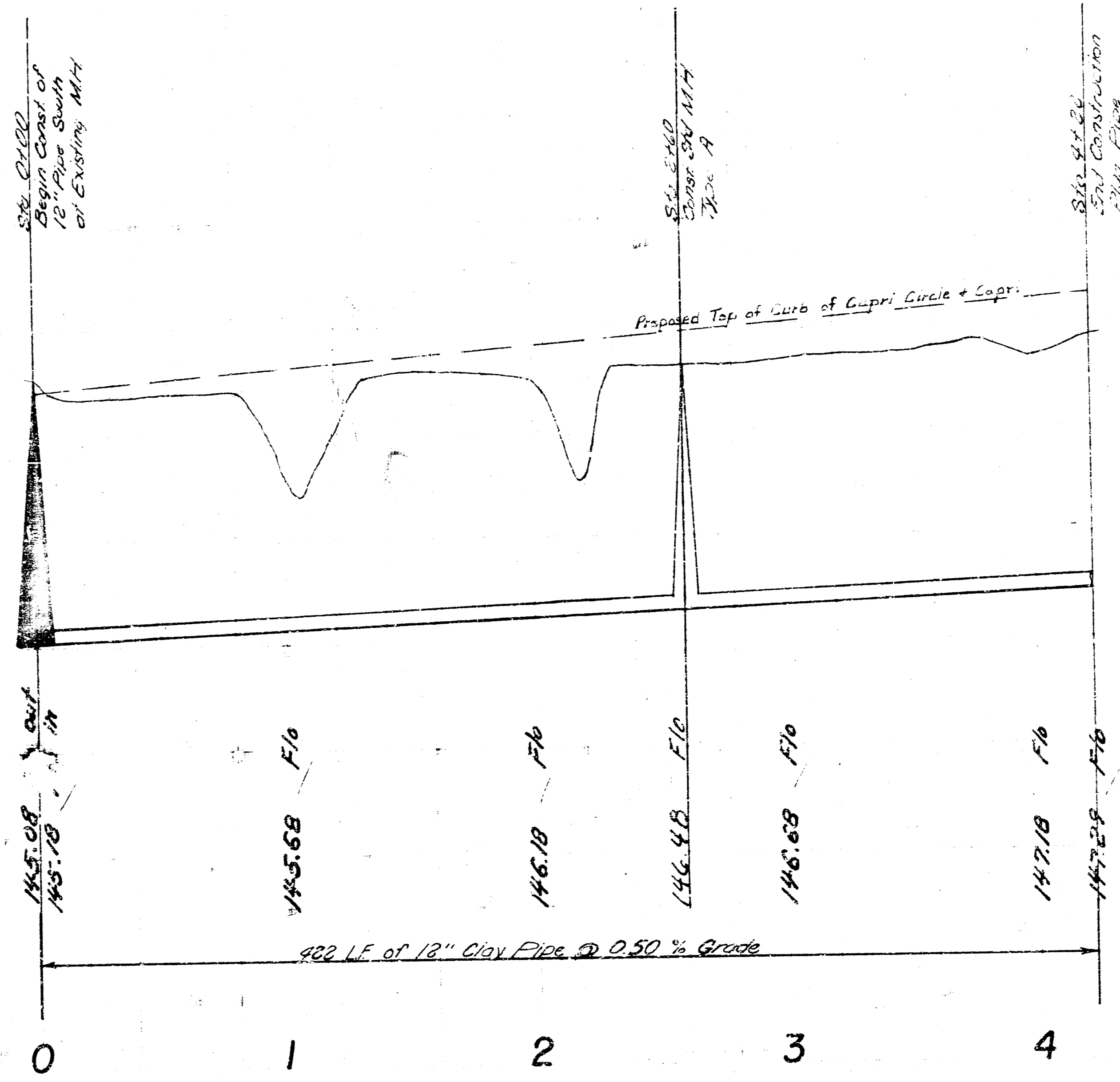


Plan Scale 1" = 40'
 Profile Scale 1" = 40' Horiz.
 1" = 5' Vert.



NOTES: FIELD CHECKED SHALL BE THE BASIS FOR THE PREPARED DRAWINGS. THE CITY ENGINEER, SURVEYOR AND LAND SURVEYOR SHALL BE RESPONSIBLE FOR THE ACCURACY OF THE INDIVIDUAL LOTS SHOWN HEREON BY THIS DEDICATION. THE CITY ENGINEER, SURVEYOR AND LAND SURVEYOR SHALL BE RESPONSIBLE FOR THE ACCURACY OF THE ELEVATIONS OF THE RISES SHOWN BY THIS DEDICATION. THE CITY ENGINEER, SURVEYOR AND LAND SURVEYOR SHALL BE RESPONSIBLE FOR THE ACCURACY OF THE RISES AND HEIGHTS OF THE RISES SHOWN BY THIS DEDICATION. THE CITY ENGINEER, SURVEYOR AND LAND SURVEYOR SHALL BE RESPONSIBLE FOR THE ACCURACY OF THE RISES AND HEIGHTS OF THE RISES SHOWN BY THIS DEDICATION. THE CITY ENGINEER, SURVEYOR AND LAND SURVEYOR SHALL BE RESPONSIBLE FOR THE ACCURACY OF THE RISES AND HEIGHTS OF THE RISES SHOWN BY THIS DEDICATION.

135
160
155
150
145
140



165
160
155
150
145
140

LAT 5 MAIN 21 W.I.S.
 CITY OF WICHITA, KANSAS
 R.W. LINN CITY ENGINEER
 DATE: PROJECT NUMBER: CBKL574110
 468-76-245-30180-000-000-C01