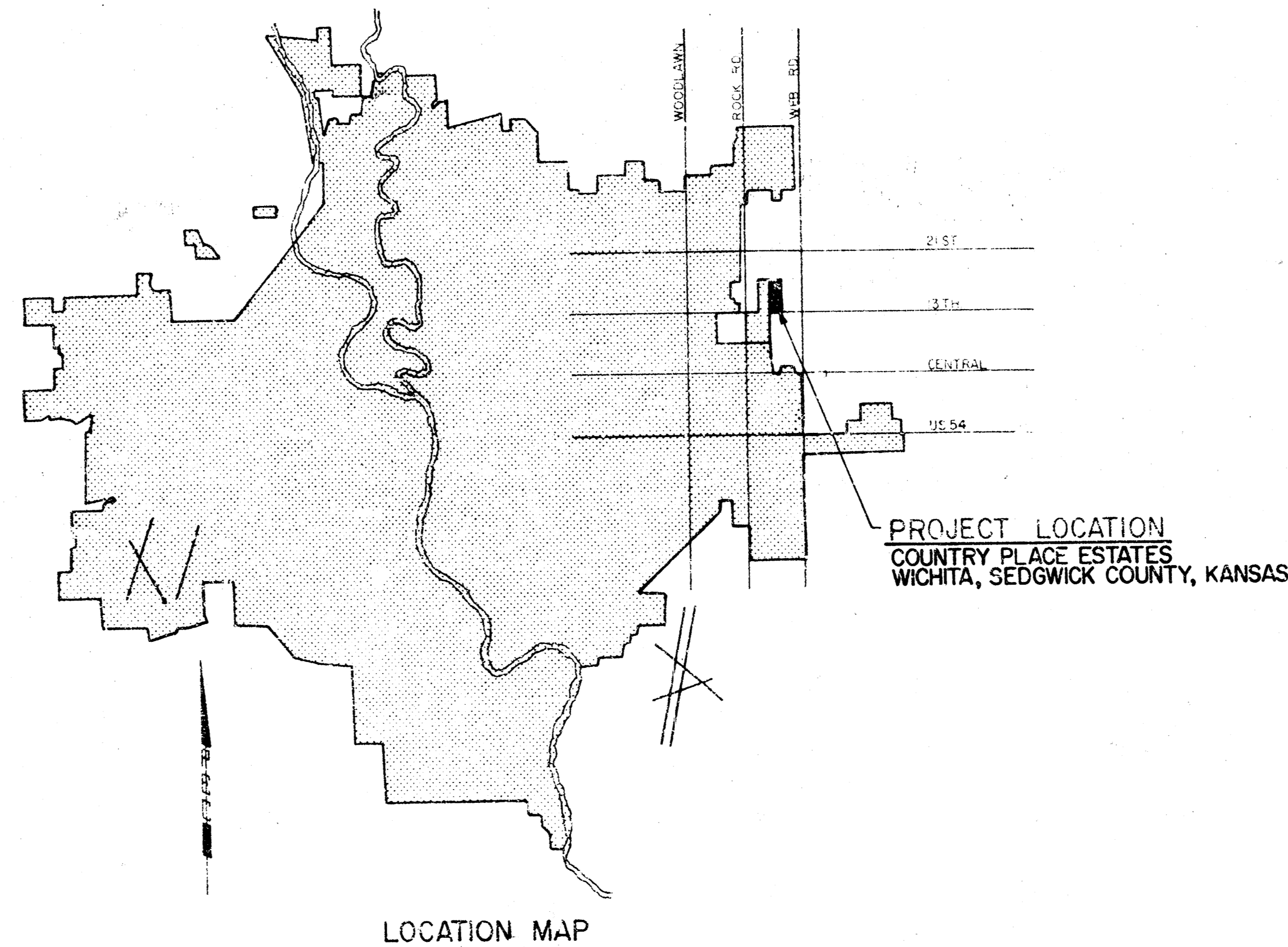
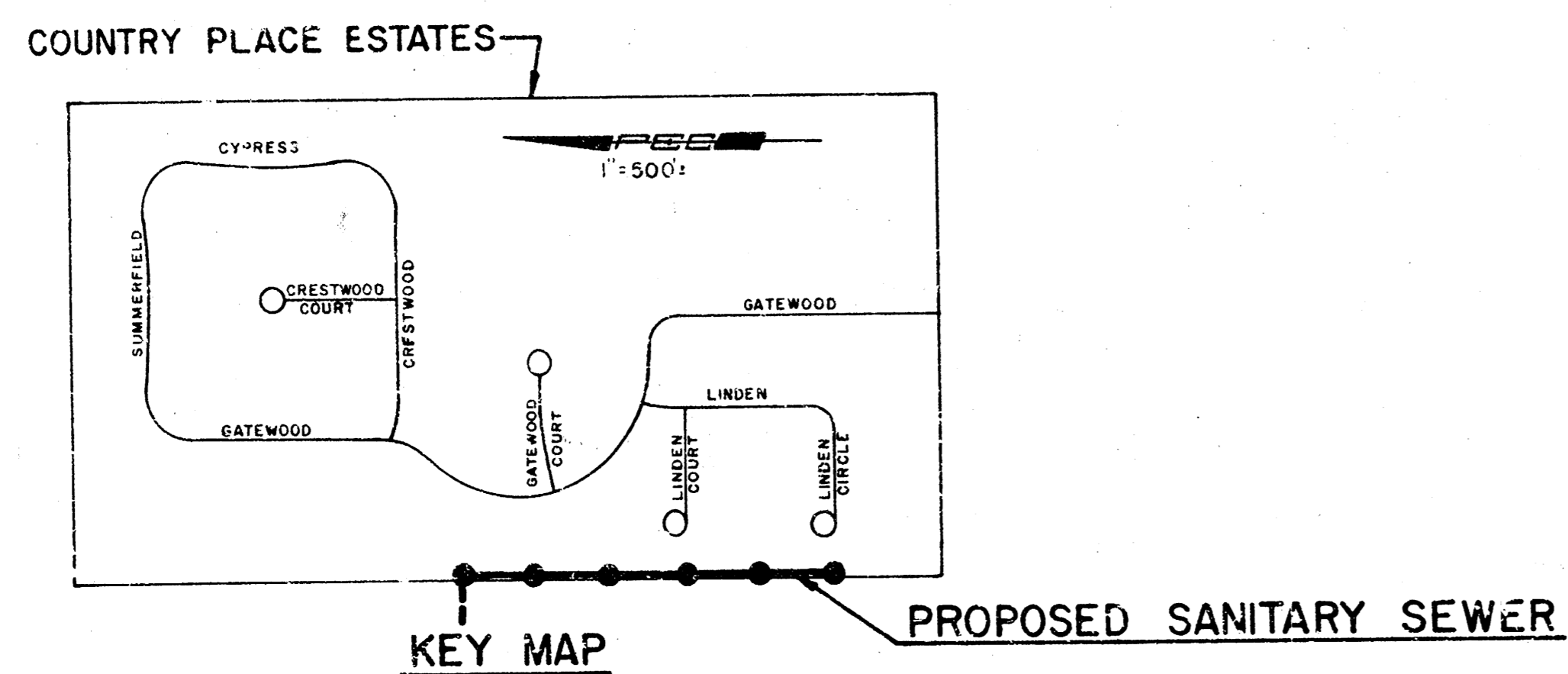


CONSTRUCTION PLANS FOR  
**LATERAL 5, MAIN 22**  
 OF THE  
**WAR INDUSTRY SEWER**  
 PHASE I  
 THE CITY OF WICHITA,  
 SEDGWICK COUNTY, KANSAS

INDEX OF SHEETS

SHEET NO. 1	TITLE SHEET
SHEET NO. 2	PLAN-PROFILE



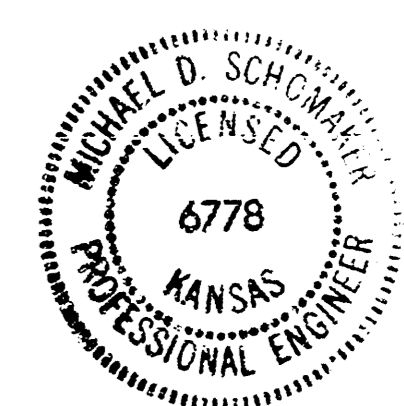
1. ALL CONSTRUCTION AND MATERIALS TO COMPLY WITH CITY OF WICHITA SPECIFICATIONS AND STANDARDS.
2. SEWER LINES TO BE INSPECTED BY THE DEPARTMENT OF PUBLIC WORKS INSPECTION.
3. PRIOR TO BEGINNING CONSTRUCTION THE CONTRACTOR SHALL UNCOVER THE EXISTING 6" VCP SANITARY SEWER NEAR PROPOSED MH 1 AND VERIFY THE FLOW LINE ELEVATION SO THAT THE ENGINEER CAN MAKE ANY NECESSARY GRADE ADJUSTMENTS.
4. TREES INDICATED TO BE REMOVED MAY BE SPARED AT THE CONTRACTOR'S OPTION.
5. THE CONTRACTOR SHALL OBTAIN PERMISSION FROM THE ENGINEER PRIOR TO TRIMMING ANY TREES, WHICH ARE INDICATED TO BE SPARED.
6. ANY TREE TRIMMING SHALL BE DONE BY THE CONTRACTOR UNDER THE SUPERVISION OF THE ENGINEER.
7. TREE REMOVAL AND TREE TRIMMING SHALL BE CONSIDERED SUSIDIARY TO THE PRICE BID FOR THE PROJECT.
8. TREES REMOVED, TREE TRIMMINGS, EXCESS EXCAVATED MATERIAL, AND OTHER DEBRIS SHALL BE HAULED FROM THE SITE BY THE CONTRACTOR AND WASTED AS DIRECTED BY THE ENGINEER.
9. THE HEDGEROW SHOWN ON THE PLANS SHALL BE SPARED EXCEPT AS NOTED.

CITY OF WICHITA PROJECT NO. 468-76-245-80718-000-000-001

**JUNE 1979**

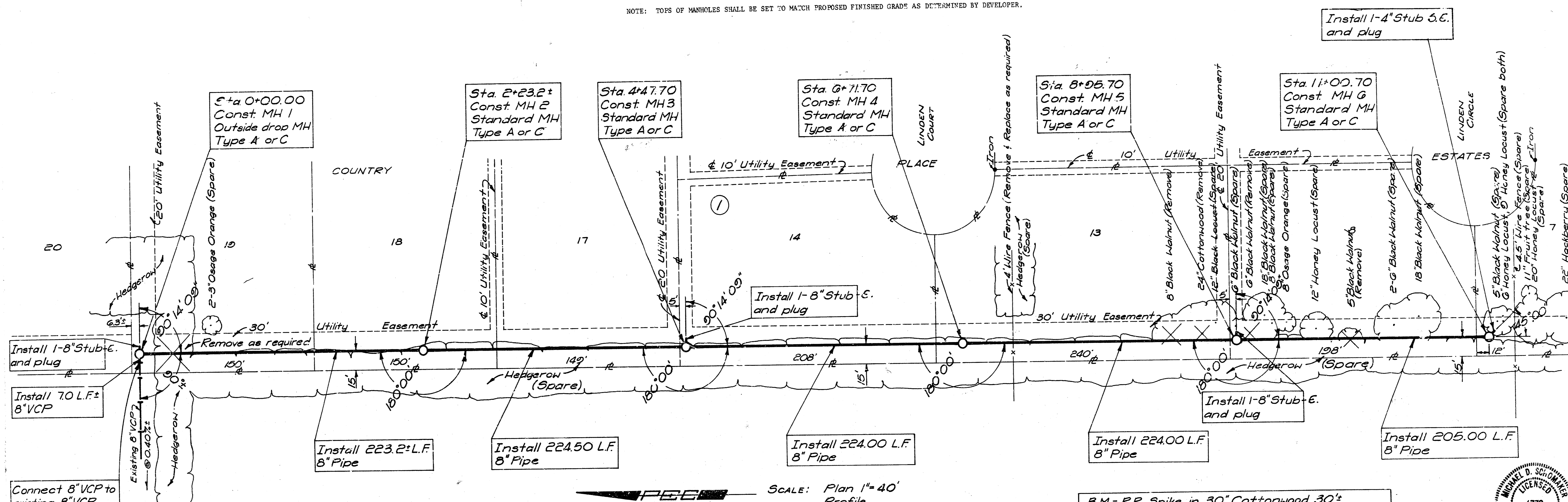
PLANS PREPARED BY

PROFESSIONAL ENGINEERING CONSULTANTS, P.A.  
 ENGINEERS  
 WICHITA, KANSAS



5/11/79

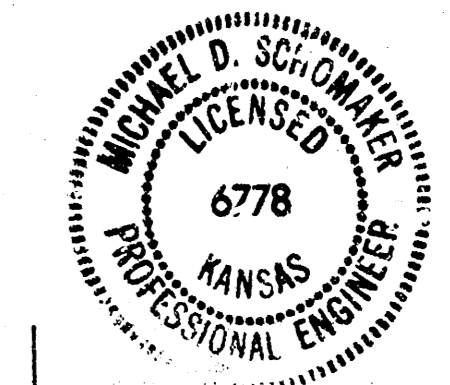
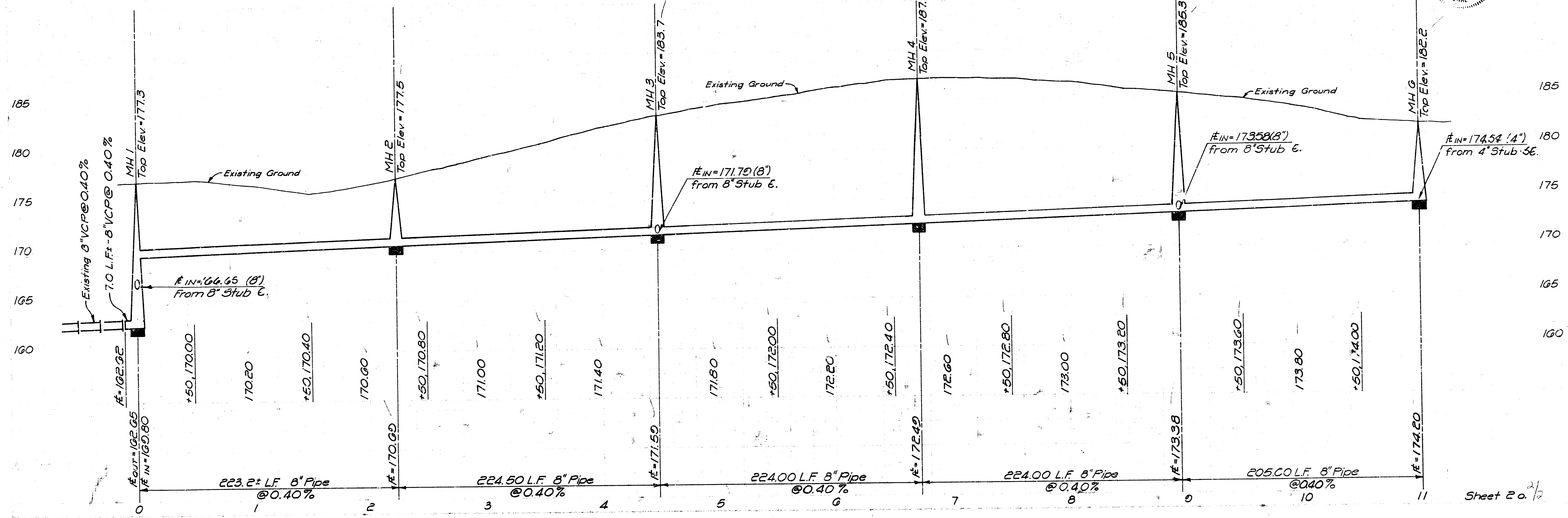
NOTE: TOPS OF MANHOLES SHALL BE SET TO MATCH PROPOSED FINISHED GRADE AS DETERMINED BY DEVELOPER.



NOTE: PIPE USED ON THIS PROJECT MAY BE CLAY PIPE, A.S.S. COMPOSITE PIPE, OR P.V.C. PIPE BETWEEN STATION 0+00 AND STATION 11+00.70. ONLY ONE TYPE OF PIPE MAY BE USED.

SCALE: Plan 1"=40'  
Profile 1"=40'  
Vert. 1"=5'

B.M. - R.R. Spike in 30' Cottonwood 30' North, 227' West of NW corner Lot 19, Block 1, Country Place Estates Elev=170.79



PROFESSIONAL ENGINEERING CONSULTANTS, P.A.  
 WICHITA, KANSAS  
 PROJECT: CITY OF WICHITA, KANSAS WAR INDUSTRY SEWER PHASE I  
 LATERAL 5, MAIN 22  
 R.W. LINN, P.E. CITY ENGINEER  
 C of W Proj. No. 468-76-245-80718-000-000-001  
 Date: June 10, 1979  
 Sheet 2 of 2