

# LATERAL 10, MAIN 22, W.I.S.

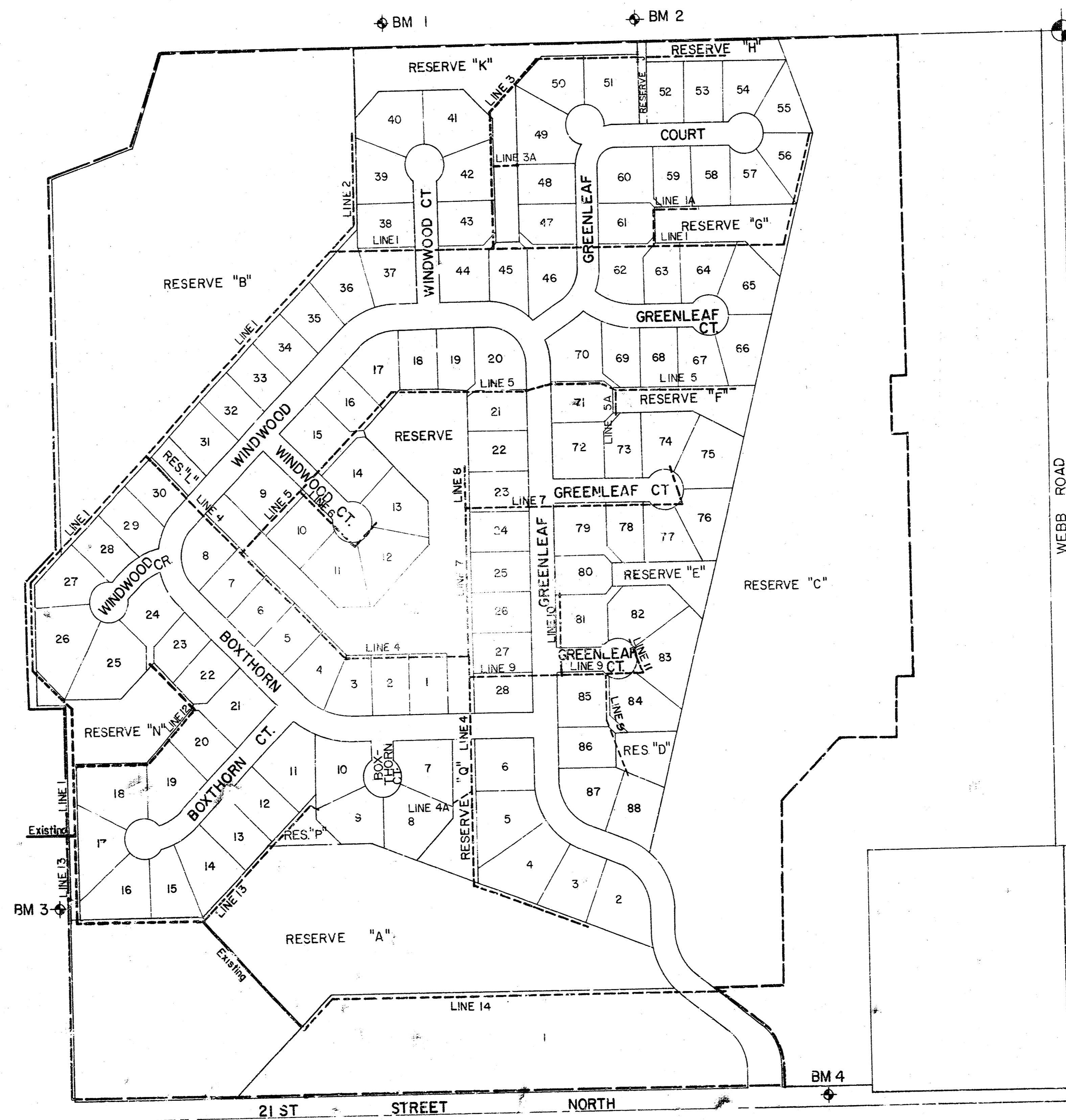
**PROJECT NO.  
468 76-245-80904-000-000-001**

**CITY OF WICHITA, KANSAS  
R. W. BRUGGEMAN, CITY ENGINEER  
JULY, 1980  
BLUESTEM VILLAGE**

### LEGEND

- Proposed Line
- Existing Line
- Benefit District Boundry

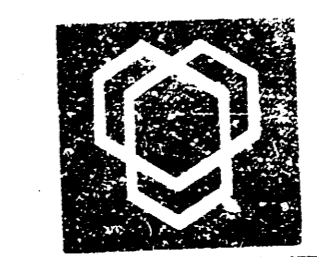
NOTE: RISERS AND ADDITIONAL STUBS SHALL BE INSTALLED ON THIS PROJECT TO SERVE INDIVIDUAL LOTS WHEN ORDERED BY THE FIELD ENGINEER. RISER CONSTRUCTION SHALL CONFORM TO THE REQUIREMENTS AS SHOWN ON STANDARD RISER DETAIL SHEET. LOCATIONS OF THE ENDS OF THE RISERS SHALL BE MARKED BY EXISTING GREEN PLASTIC COLORED TAPE TO THE END OF THE RISER AND BROUGHT TO THE GROUND SURFACE AS THE EXCAVATION IS BACKFILLED SUCH THAT THE COLORED TAPE WILL BE VISIBLE WHEN THE PROJECT IS COMPLETED. ALL RISERS SHALL BE CONSTRUCTED USING S.I.D.R., 25.5 A.B.S. OR P.V.C. PIPE. ELEVATIONS OF STUBS AND TOPS OF RISERS SHALL BE SUCH THAT WILL FACILITATE CONNECTION OF BASEMENT DRAINS WHEN THESE LOTS ARE DEVELOPED.



SHT. NO.	DESCRIPTION
1	COVER SHEET
2-4	LINE 1 & 1A
5	LINE 2
6	LINE 3 & 3A
7-8	LINE 4 & 4A
9	LINE 5
10	LINES 5 & 6 & 5A
11	LINE 7
12	LINES 8 & 9 & 11
13	LINES 10 & 12
14	LINE 13
15-16	LINE 14
17	PLAT

*Cap Brint*  
*7/15/81*

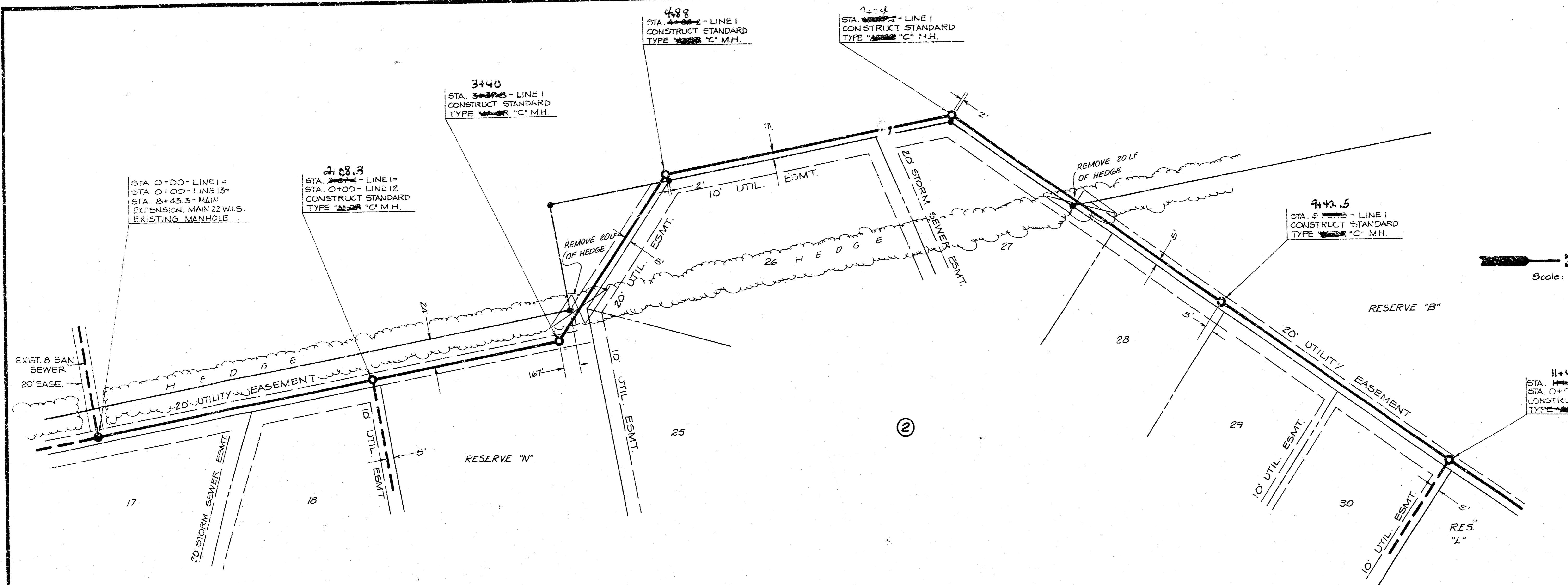
SE 1/4 Cor. Section 5  
T-27-S, R-2-E



**Van Doren - Hazard - Stallings**  
Architects • Engineers • Planners  
Topeka Wichita Minneapolis

Sheet **1**  
of **17**

BLUESTEM VILLAGE  
 LATERAL 10 MAIN 22, W.S.  
 PROJECT NO.  
 468-76-245-80904-000-000-001



Scale: 1" = 40' Horiz.  
 1" = 5' Vert.

R.M. #1:	SPK. STEP IN S. FACE OF 380' P.P. E. OF CENTER COR. ELEV. +211.54
R.M. #2:	SPK. STEP IN W. FACE OF 478' P.P. E. OF CENTER COR. ELEV. +221.80
R.M. #3:	TOP BENT SPK. E. ROOT 2'-0" HILLOCK TREE 545' N. 04° S. 1/4 COR. 50' LT. 1/4 A. - 194.30
R.M. #4:	10' S.E. COR. OF HWALL. RCB 283.80' W. OF S.E. COR. ELEV. +205.10

STA. 0+00 - LINE 1#  
 STA. 0+00 - LINE 12#  
 STA. 0+45.5 - MAIN 22 EXTENSION, MAIN 22 W.S. EXISTING MANHOLE TOP M.H. ELEV. +196.0

STA. 0+88.3 - LINE 1#  
 STA. 0+00 - LINE 12#  
 STA. 0+45.5 - MAIN 22 EXTENSION, MAIN 22 W.S. EXISTING MANHOLE TOP M.H. ELEV. +194.5

STA. 3+40 - LINE 1#  
 CONSTRUCT STANDARD TYPE "A" OR "C" M.H.

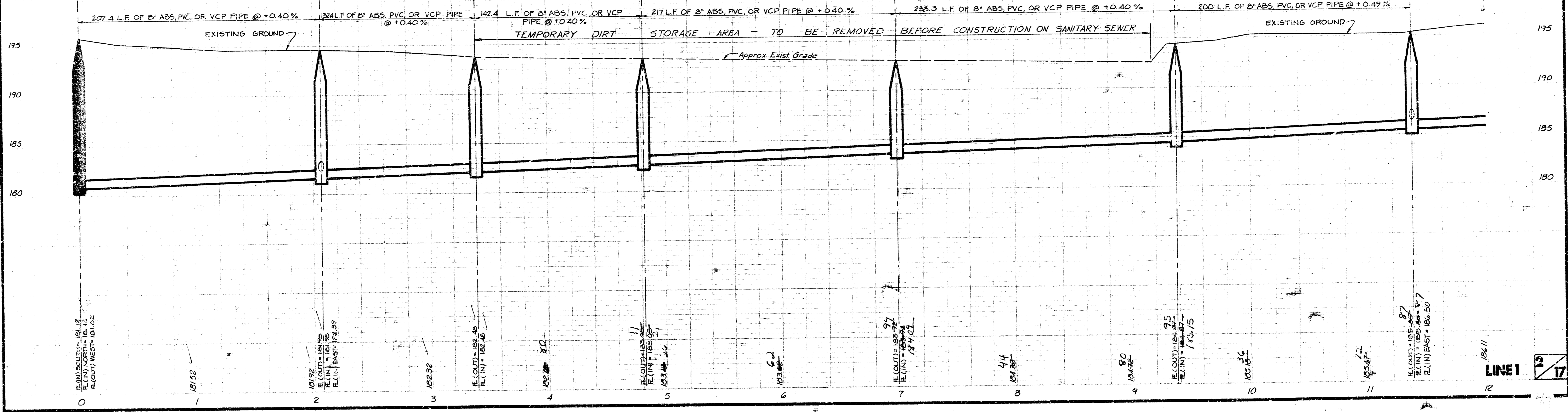
STA. 4+88 - LINE 1#  
 CONSTRUCT STANDARD TYPE "A" OR "C" M.H.

STA. 7+44 - LINE 1#  
 CONSTRUCT STANDARD TYPE "A" OR "C" M.H.

STA. 9+42.5 - LINE 1#  
 CONSTRUCT STANDARD TYPE "A" OR "C" M.H.

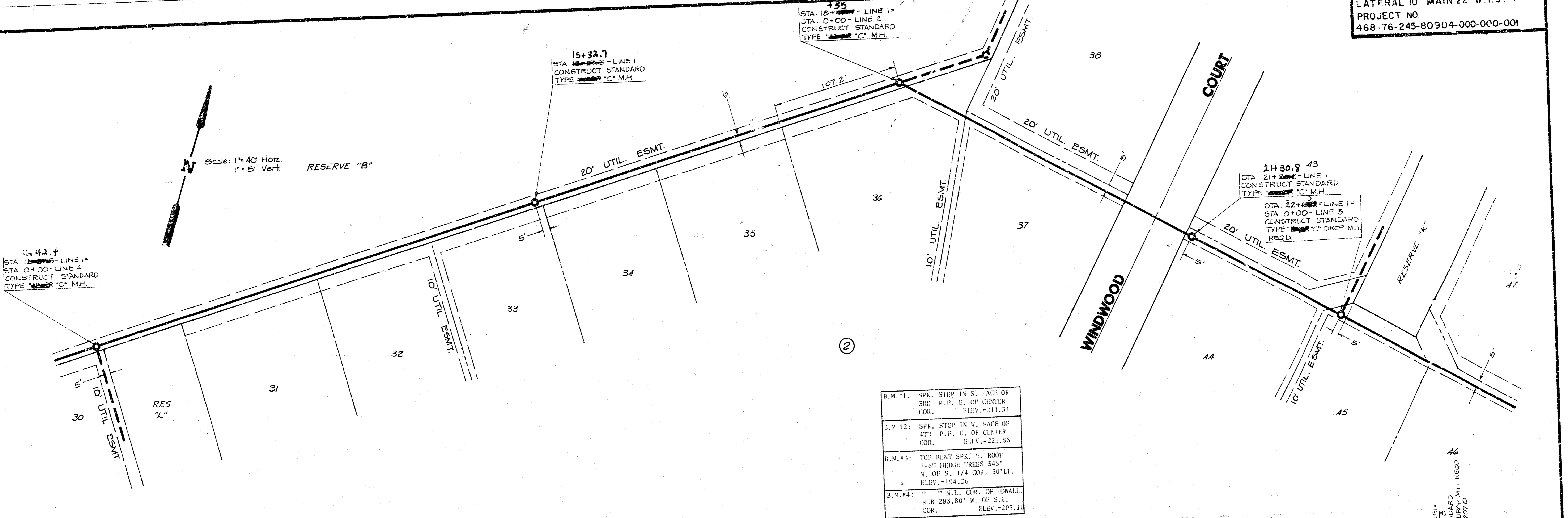
STA. 11+42.4 - LINE 1#  
 STA. 0+70 - LINE 4#  
 CONSTRUCT STANDARD TYPE "A" OR "C" M.H.

STA. 11+27.8 - LINE 1#  
 STA. 0+00 - LINE 12#  
 CONSTRUCT STANDARD TYPE "A" OR "C" M.H. TOP M.H. ELEV. +195.5

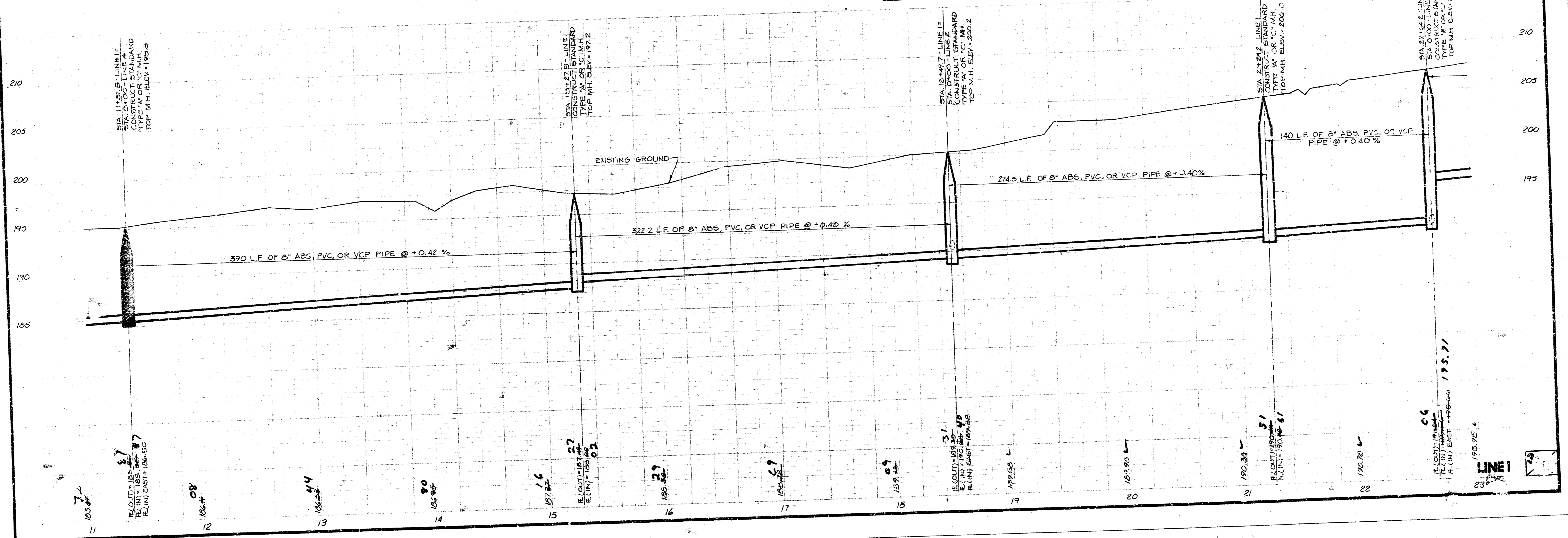


**BLUESTEM VILLAGE**  
 LATFRAL 10 MAIN 22 W.I.S.  
 PROJECT NO.  
 468-76-245-80904-000-000-001

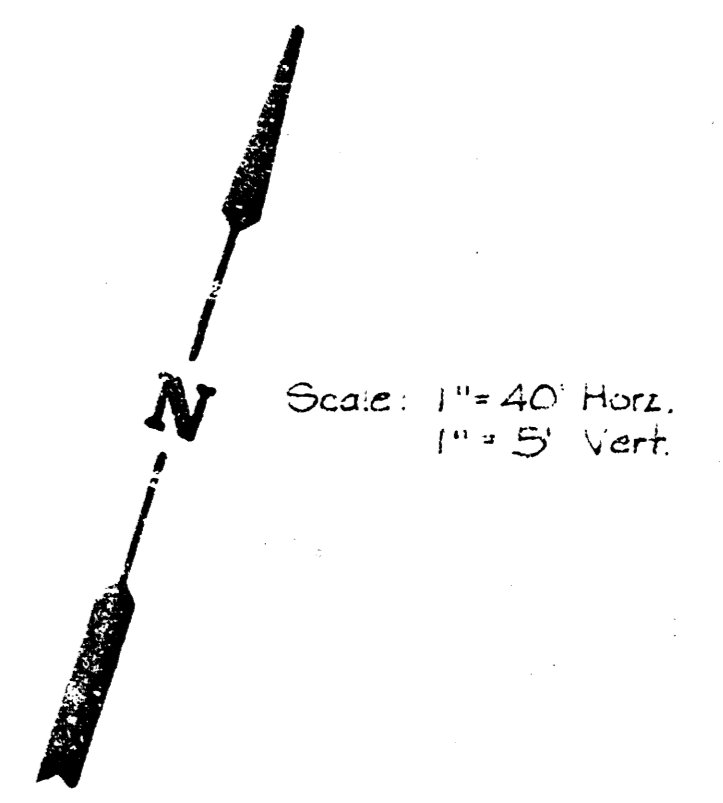
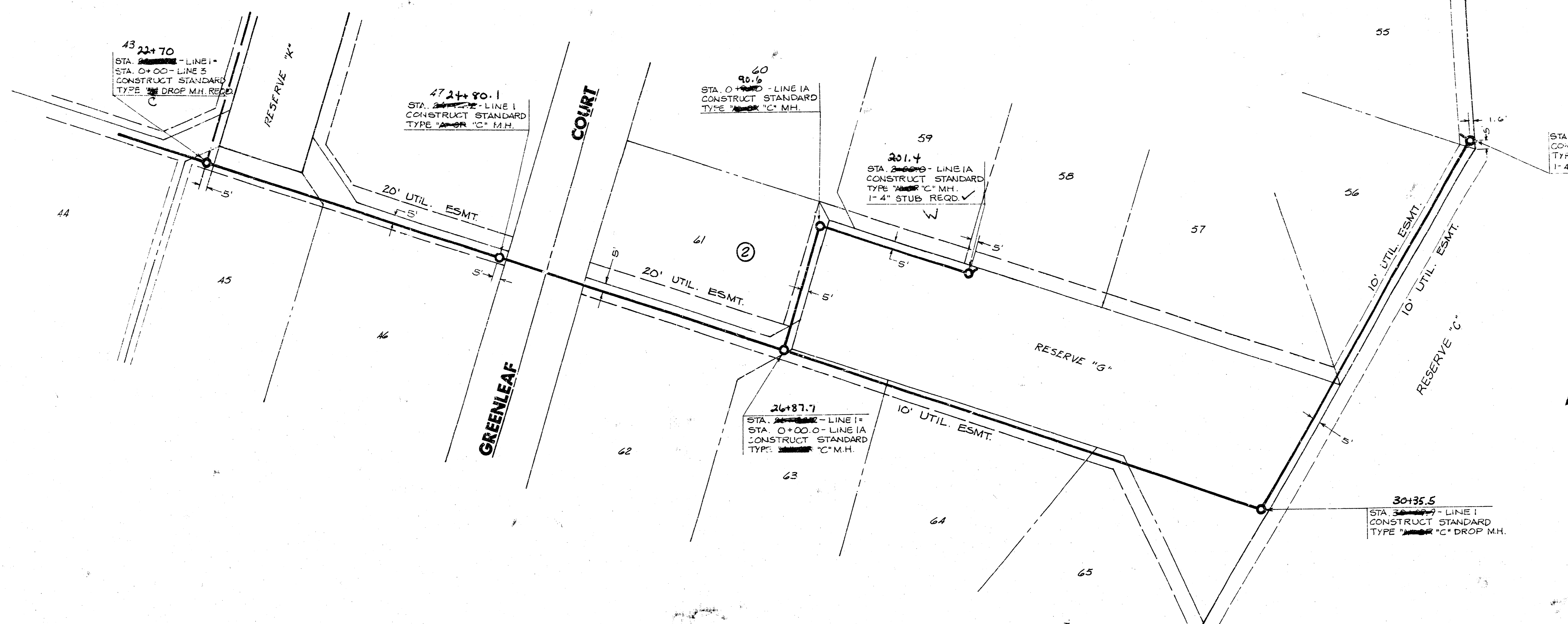
Scale: 1" = 40' Horiz.  
 1" = 5' Vert.



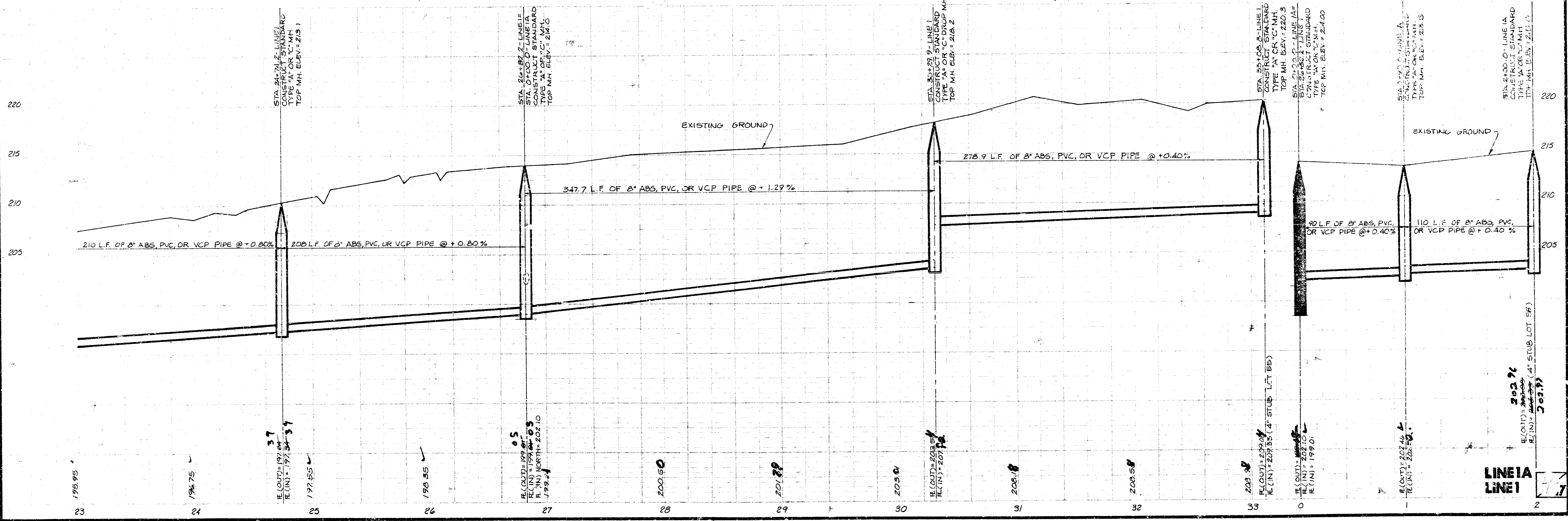
B.M.#1:	SPK. STEP IN S. FACE OF 3RD P.P. E. OF CENTER COR.	ELEV. = 211.54
B.M.#2:	SPK. STEP IN W. FACE OF 4TH P.P. E. OF CENTER COR.	ELEV. = 221.86
B.M.#3:	TOP BENT SPK. E. ROOT 2-6" HEDGE TREES 545' N. OF S. 1/4 COR. 50' LT.	ELEV. = 194.56
B.M.#4:	T.I.P. S.E. COR. OF HULL. NCB 285.80' W. OF S.E. COR.	ELEV. = 205.14



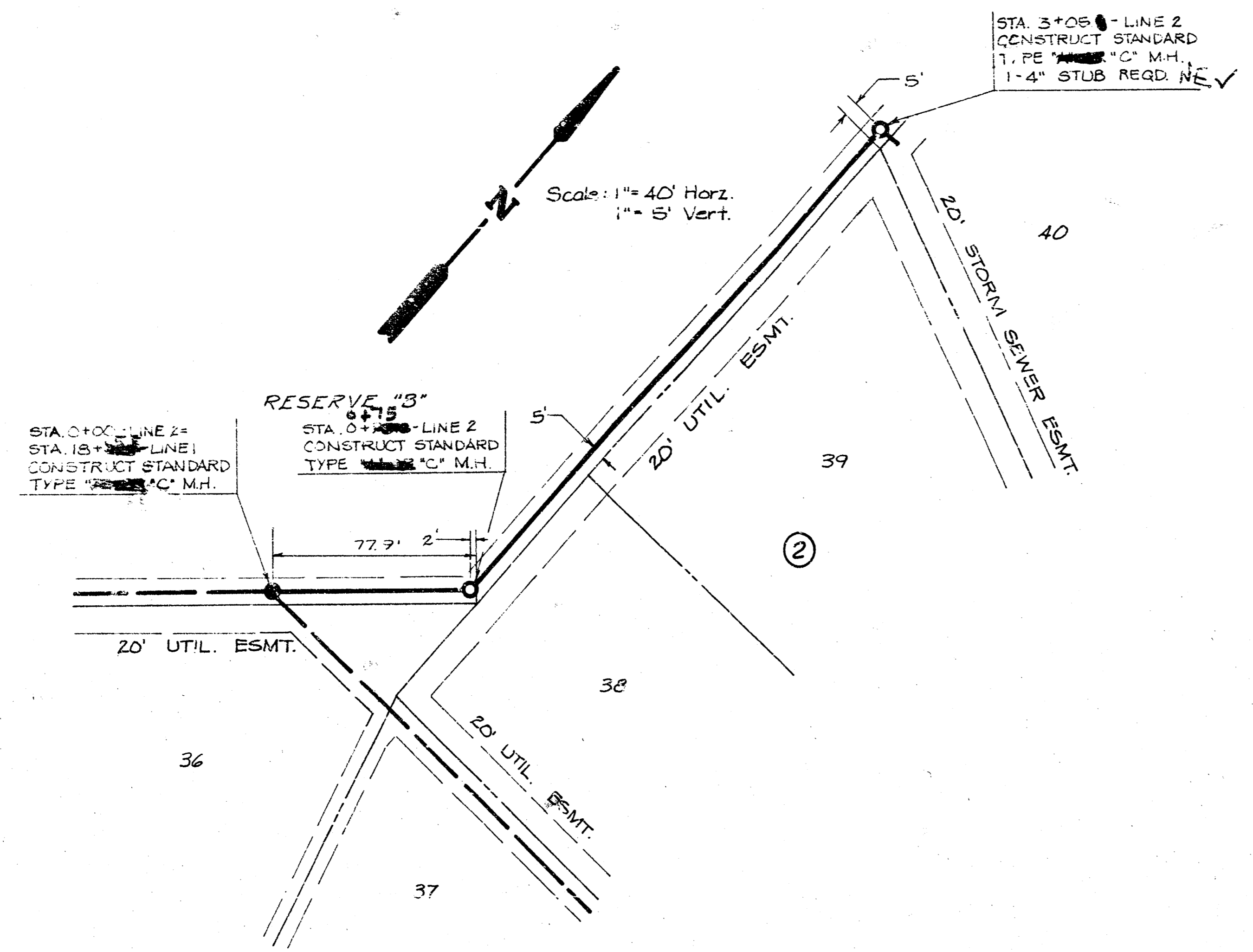
BLUESTEM VILLAGE  
 LATERAL 10 MAIN 22 W.I.S.  
 PROJECT NO.  
 468-76-245-80904-000-0001



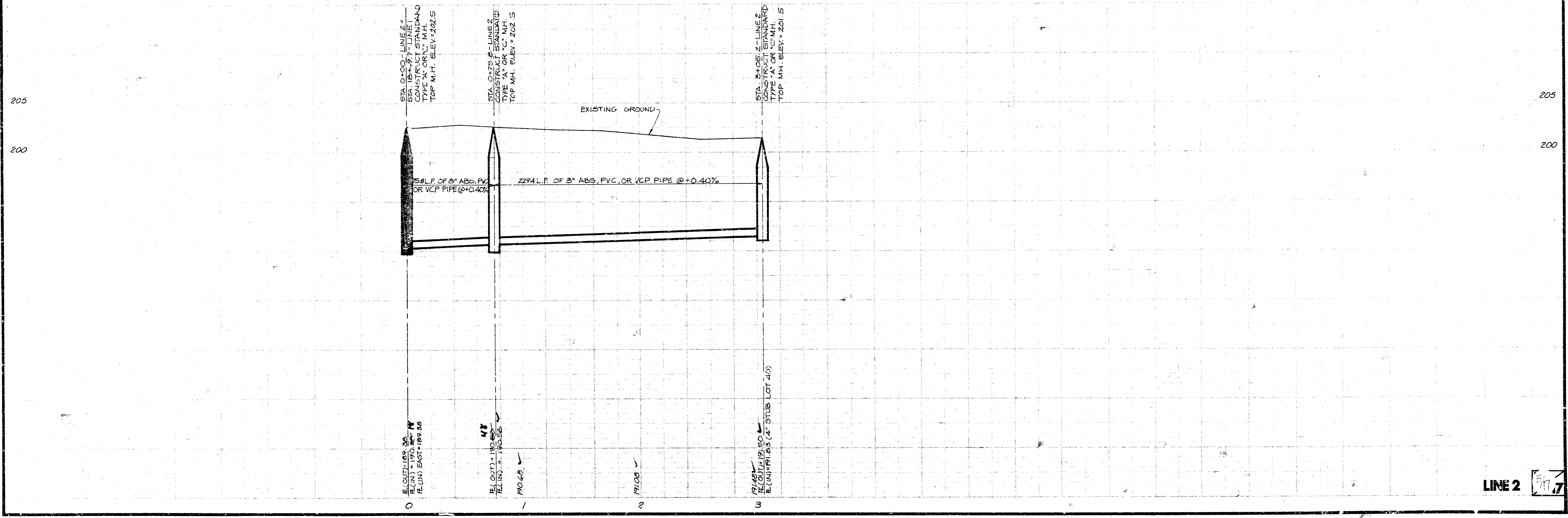
R.M. 11:	SPK. SHIP IN S. FACE OF 580' P.P. E. OF CENTER COR.	ELEV. 211.84
R.M. 12:	SPK. SHIP IN N. FACE OF 410' P.P. E. OF CENTER COR.	ELEV. 221.86
R.M. 13:	TOP BEST SPK. E. ROOF 2" CURB IRRES 545' N. OF S. 1/4 COR. 30° E. ELEV. 194.56	
R.M. 14:	TOP BEST SPK. E. ROOF 2" CURB IRRES 545' N. OF S. 1/4 COR. 30° E. ELEV. 195.14	



**BLUESTEM VILLAGE**  
**LATERAL 10 MAIN 22 W.I.S.**  
**PROJECT NO.**  
**468-76-245-80904-000-000-001**

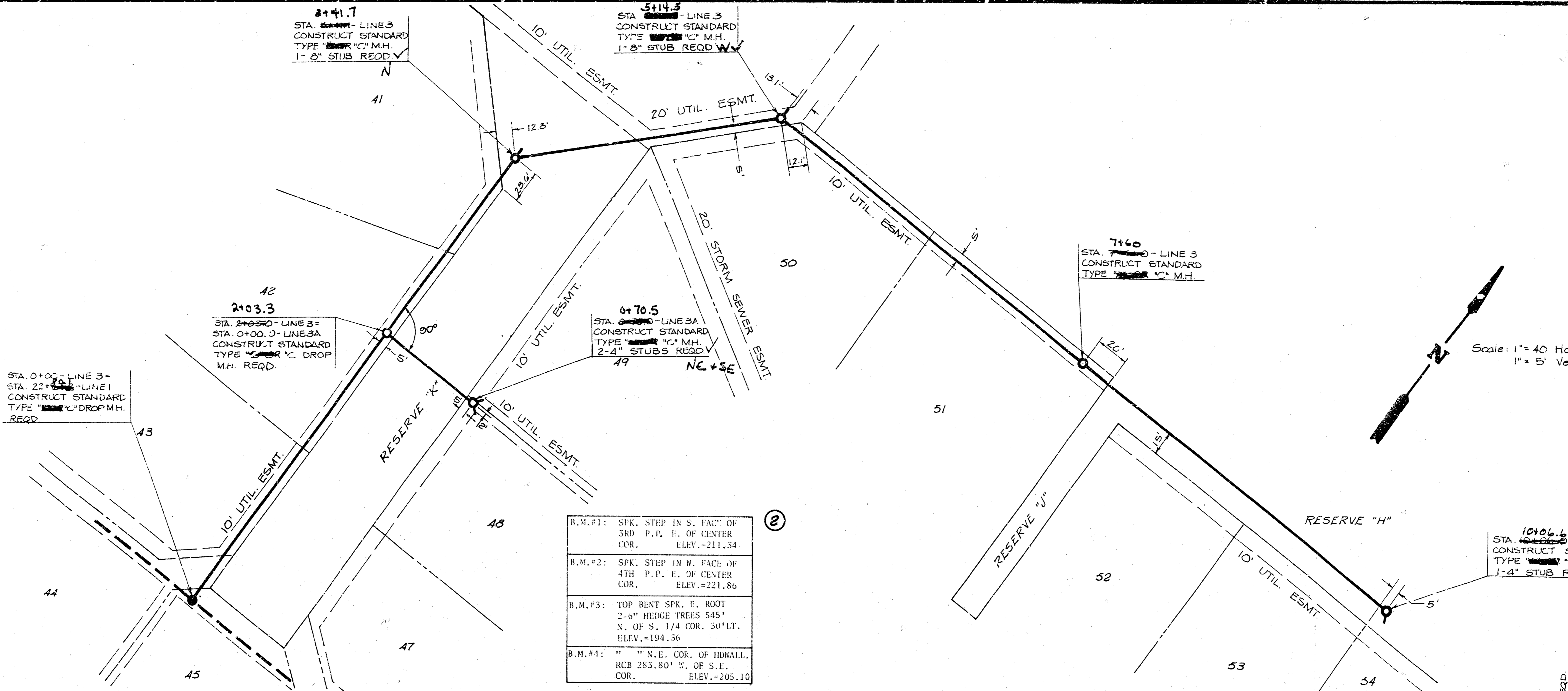


B.M.#1:	SPK. STEP IN S. FACE OF 3RD P.P. E. OF CENTER COR. ELEV. = 211.34
B.M.#2:	SPK. STEP IN W. FACE OF 4TH P.P. E. OF CENTER COR. ELEV. = 221.80
B.M.#3:	TOP BENT SPK. E. ROOF 2-6" HEDGE TREES 545' N. OF S. 1/4 COR. 50' LT. ELEV. = 194.36
B.M.#4:	" " N.E. COR. OF HWALL. ROB 25.5 80' W. OF S.E. COR. ELEV. = 205.10

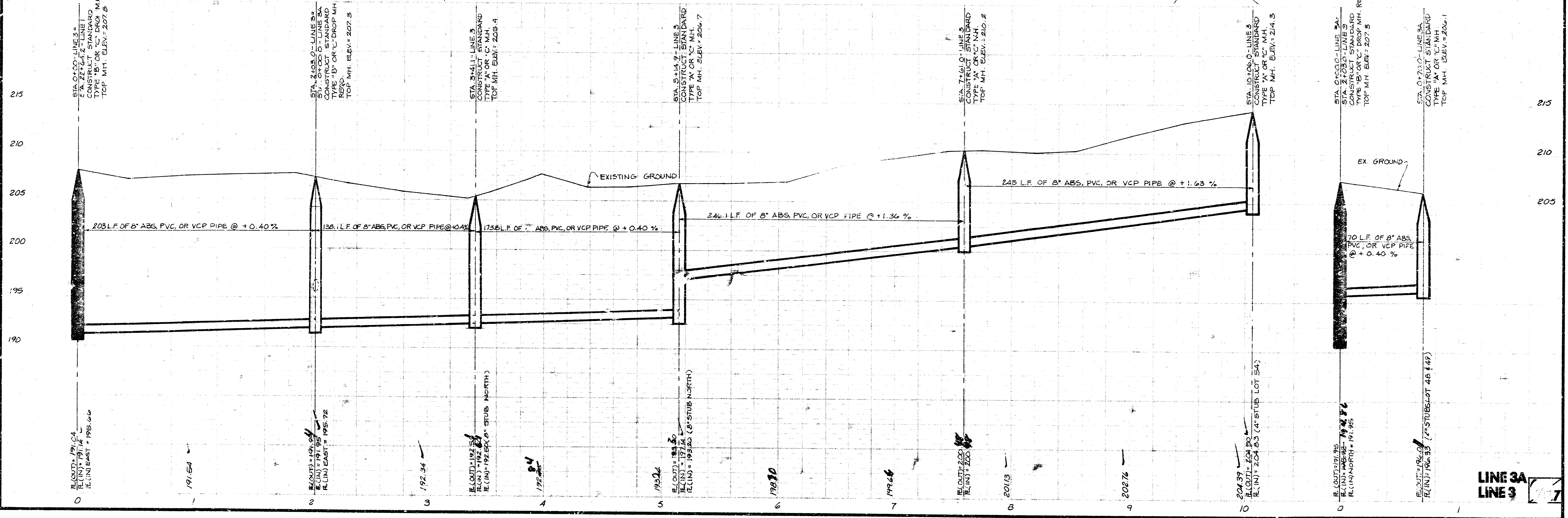


**LINE 2** **Sheet 7**

BLUESTEM VILLAGE  
 LATERAL 10 MAIN 22 W.I.S.  
 PROJECT NO.  
 468-76-245-80904-000-000-001



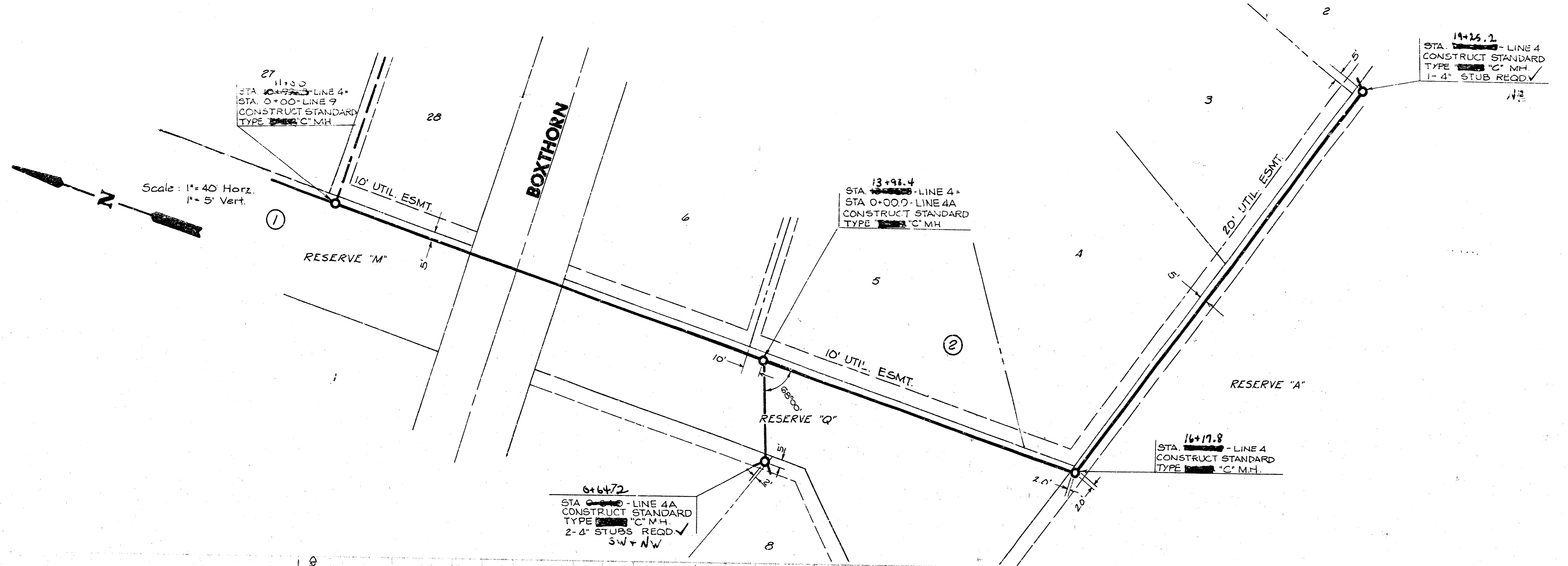
B.M. #1:	SPK. STEP IN S. FAC. OF 3RD P.P. E. OF CENTER COR. ELEV. = 211.34
B.M. #2:	SPK. STEP IN N. FAC. OF 4TH P.P. E. OF CENTER COR. ELEV. = 221.86
B.M. #3:	TOP BENT SPK. E. ROOT 2'-0" HEDGE TREES 545' N. OF S. 1/4 COR. 30' LT. ELEV. = 194.36
B.M. #4:	" " N.E. COR. OF HWALL. RCB 283.80' N. OF S.E. COR. ELEV. = 205.10



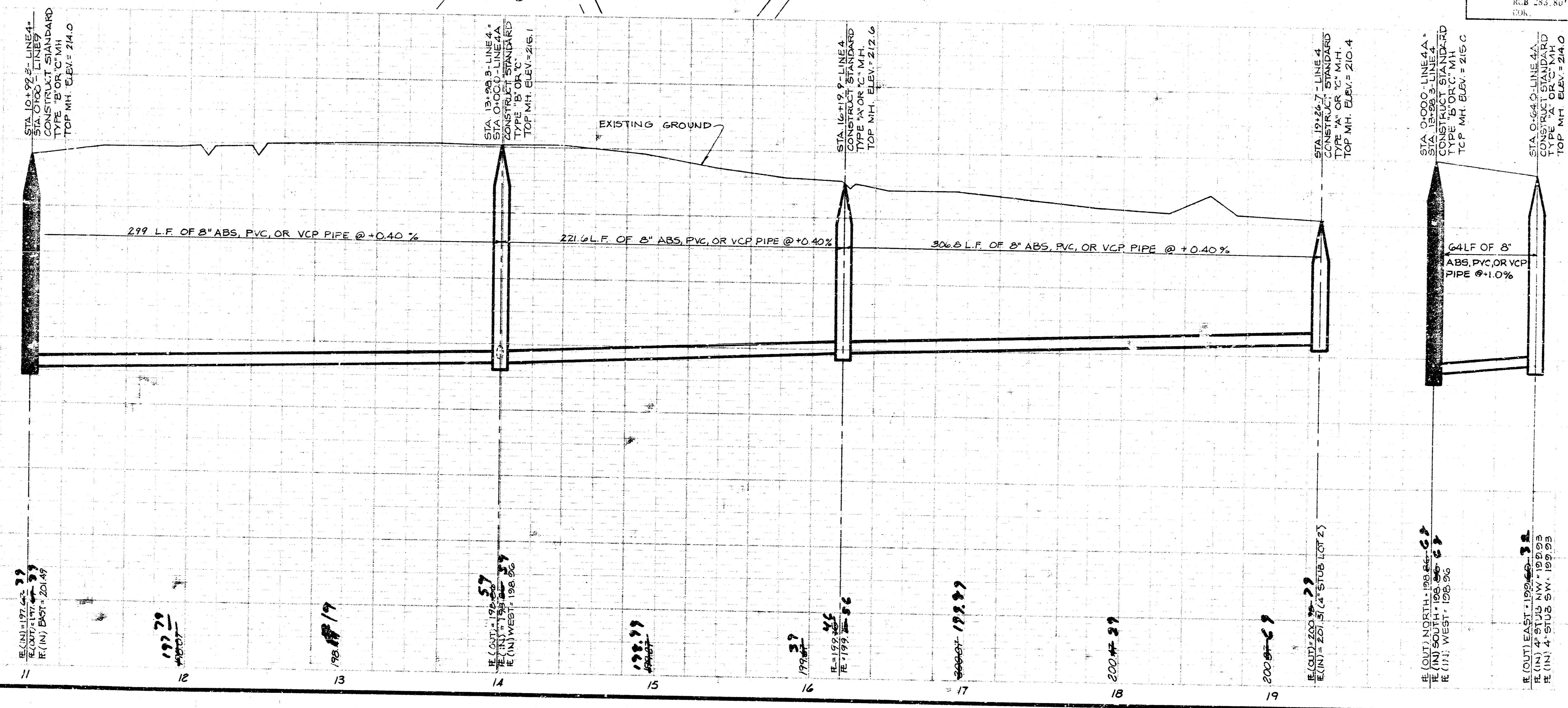
LINE 3A  
 LINE 3



BLUESTEM VILLAGE  
 LATERAL TO MAIN 22 W.S.  
 PROJECT NO.  
 468-76-245-80904-000-000-001



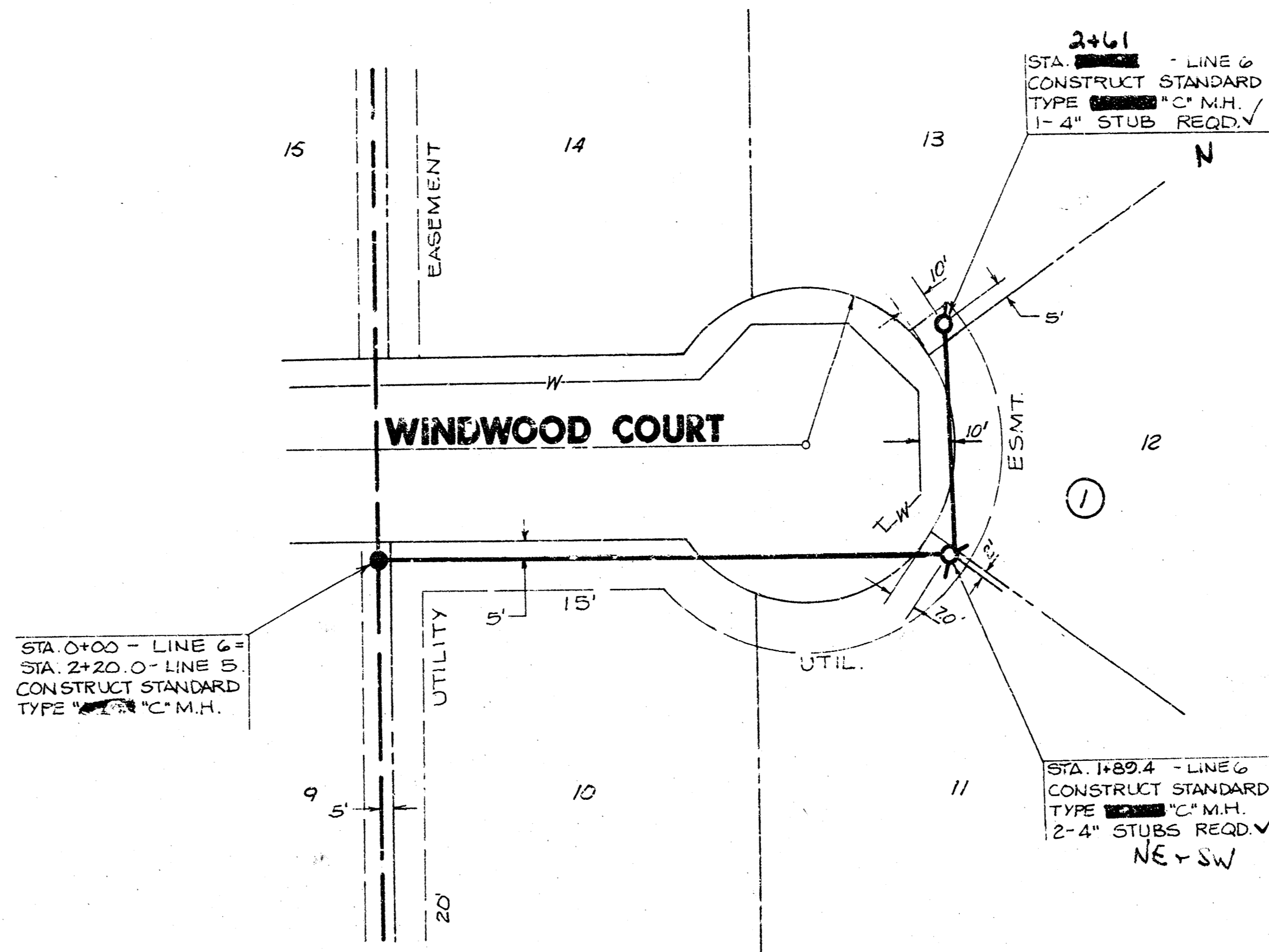
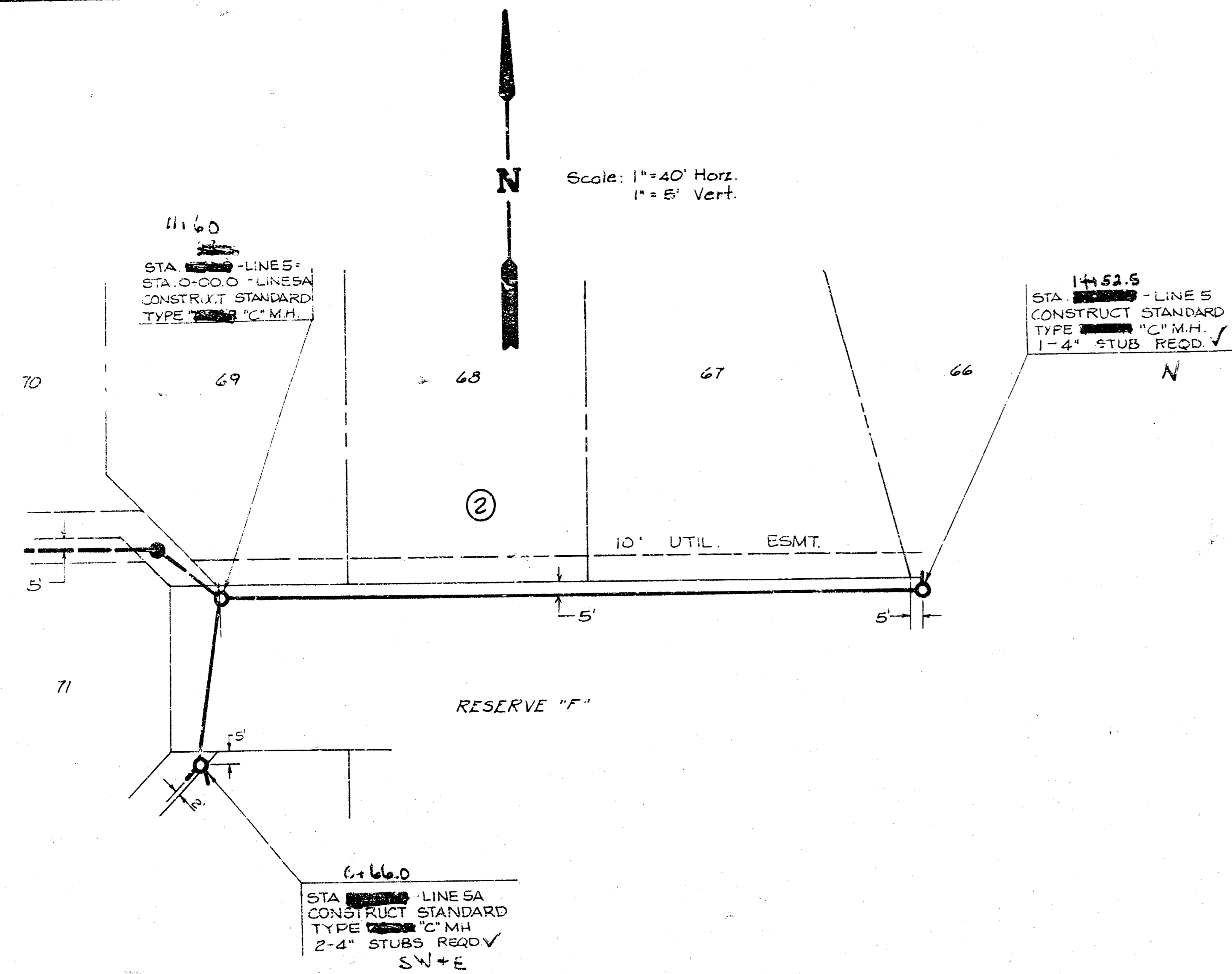
R.M. #1:	SEE SHEET IN S. FACE OF
CON.	P.P. E. OF CENTER
CON.	ELEV. = 211.51
R.M. #2:	SEE SHEET IN R. FACE OF
CON.	P.P. E. OF CENTER
CON.	ELEV. = 221.86
R.M. #3:	TOP BENT SPK. E. ROOF
CON.	2-5" BENT PILES 5'3"
CON.	N. OF S. 1/4 COR. 50'41"
CON.	ELEV. = 194.36
R.M. #4:	SEE SHEET IN S. FACE OF
CON.	RIB 255.80' W. OF S. E.
CON.	ELEV. = 205.13



LINE 4



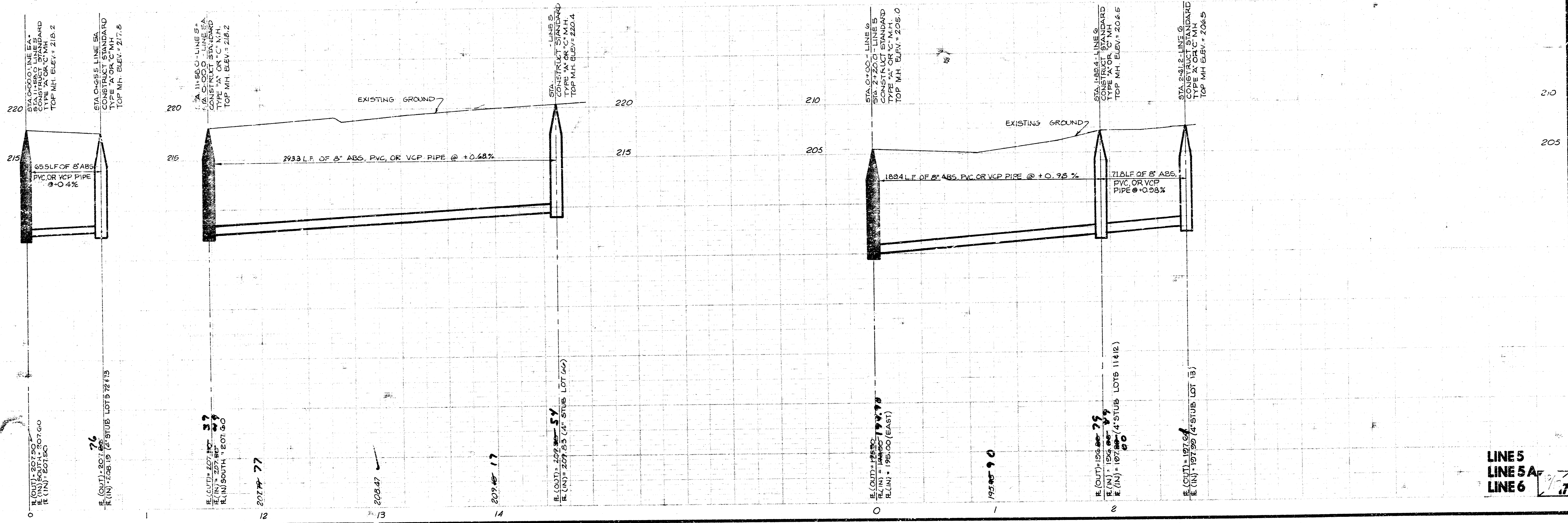
BLUESTEM VILLAGE  
 LATERAL 10 MAIN 22 W.I.S.  
 PROJECT NO.  
 468-76-245-80904-000-000-001



Scale: 1"=40' Horiz.  
 1"=5' Vert.

Scale: 1"=40' Horiz.  
 1"=5' Vert.

B.M. #1:	SPK. STIP IN S. FACE OF 3RD P.P. E. OF CENTER COR.	ELEV. = 211.54
B.M. #2:	SPK. STIP IN W. FACE OF 4TH P.P. E. OF CENTER COR.	ELEV. = 221.86
B.M. #3:	TOP BENT SPK. I. ROOF 2-6" HEIGHT TREES 545' N. OF S. 1/4 COR. 50' LT.	ELEV. = 194.35
B.M. #4:	" " " N.E. COR. OF HWALL. RCB 283.80' W. OF S.E. COR.	ELEV. = 205.19



LINE 5  
 LINE 6

BLUESTEM VILLAGE  
 LATERAL TO MAIN 22 W.S.  
 PROJECT NO.  
 468-76-245-80904-000-000-001

Scale: 1" = 40' Horiz.  
 1" = 5' Vert.

RESERVE "M"  
 STA. 0+00.0 - LINE 7 =  
 STA. 0+00.0 - LINE 4  
 CONSTRUCT STANDARD  
 TYPE "A" C.M.H.

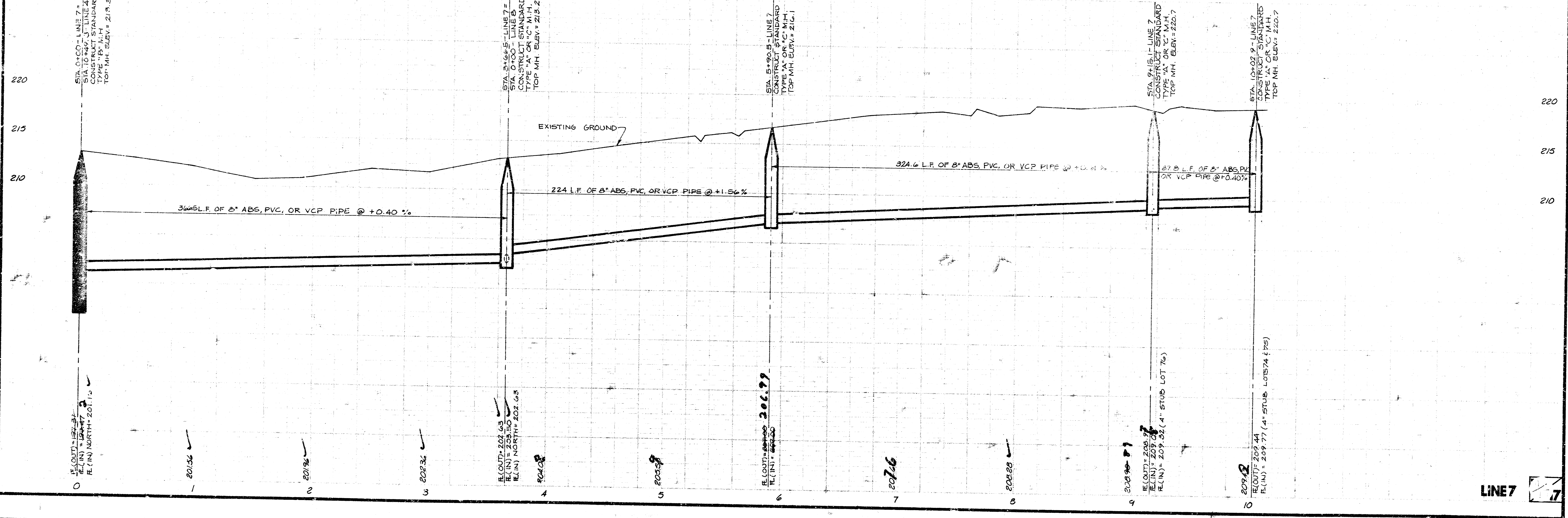
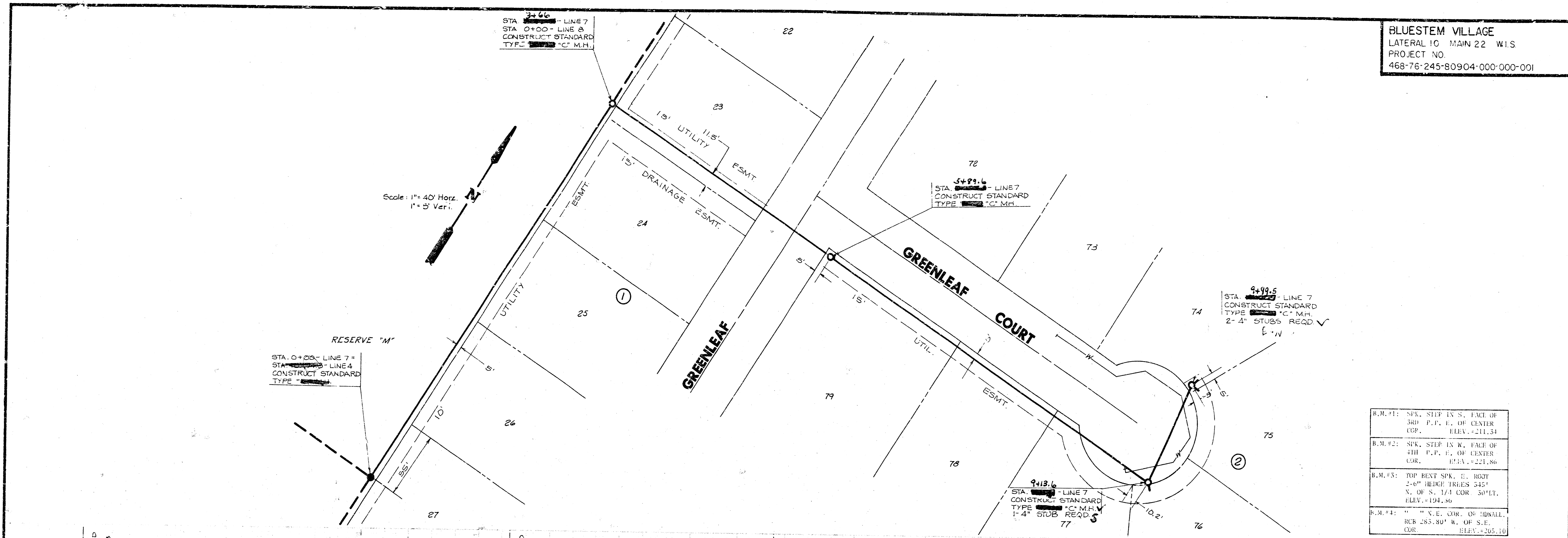
STA. 3+60.0 - LINE 7  
 STA. 0+00.0 - LINE 8  
 CONSTRUCT STANDARD  
 TYPE "A" C.M.H.

STA. 5+99.6 - LINE 7  
 CONSTRUCT STANDARD  
 TYPE "A" C.M.H.

STA. 9+99.5 - LINE 7  
 CONSTRUCT STANDARD  
 TYPE "A" C.M.H.  
 2'-4" STUB REQ'D

STA. 9+13.6 - LINE 7  
 CONSTRUCT STANDARD  
 TYPE "A" C.M.H.  
 1'-4" STUB REQ'D

B.M.#1:	SPK. STEP IN S. FACE OF 360' P.P. E. OF CENTER COR. ELEV. = 211.31
B.M.#2:	SPK. STEP IN W. FACE OF 210' P.P. E. OF CENTER COR. ELEV. = 221.86
B.M.#3:	TOP BEST SPK. E. ROOT 2'-0" BRIDGE TRILES 545' V. OF S. 1/4 COR 50' LT. ELEV. = 194.36
B.M.#4:	" " " " V.E. COR. OF HWALL R.C.B. 283.80' W. OF S.E. COR. ELEV. = 305.10

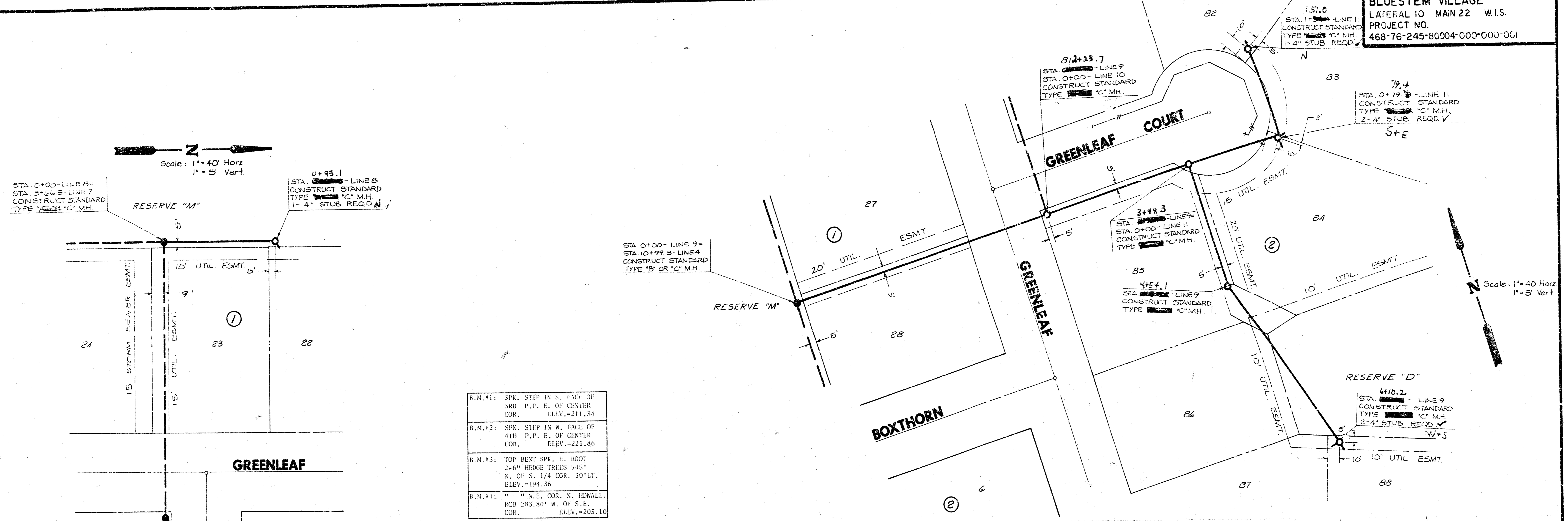


LINE 7

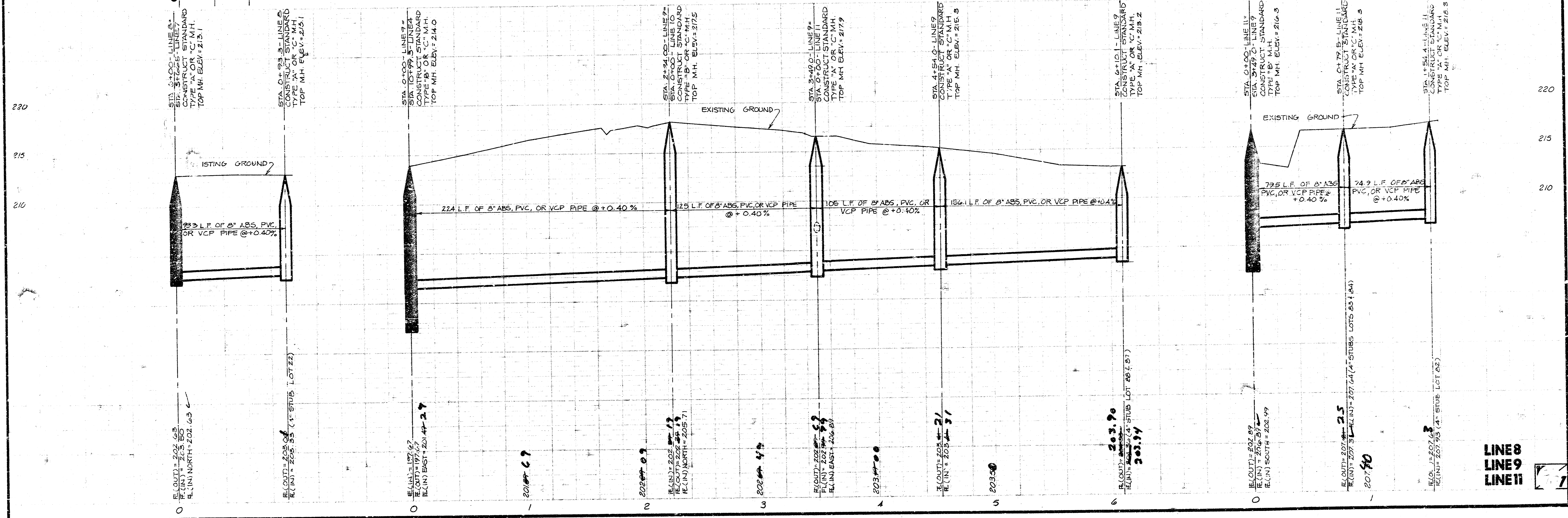
**BLUESTEM VILLAGE**  
 LATERAL TO MAIN 22 W.I.S.  
 PROJECT NO.  
 468-76-245-80004-000-000-001

Scale: 1" = 40' Horiz.  
 1" = 5' Vert.

Scale: 1" = 40' Horiz.  
 1" = 5' Vert.



R.M.#1:	SPK. STEP IN S. FACE OF 3RD P.P. E. OF CENTER COR. ELEV.=211.34
R.M.#2:	SPK. STEP IN W. FACE OF 4TH P.P. E. OF CENTER COR. ELEV.=221.86
R.M.#3:	TOP BENT SPK. E. ROOT 2-6" HEDGE TREES 545' N. OF S. 1/4 COR. 50' LT. ELEV.=194.36
R.M.#4:	1" N.E. COR. N. HDWALL. RCB 283.80' W. OF S.E. COR. ELEV.=205.10

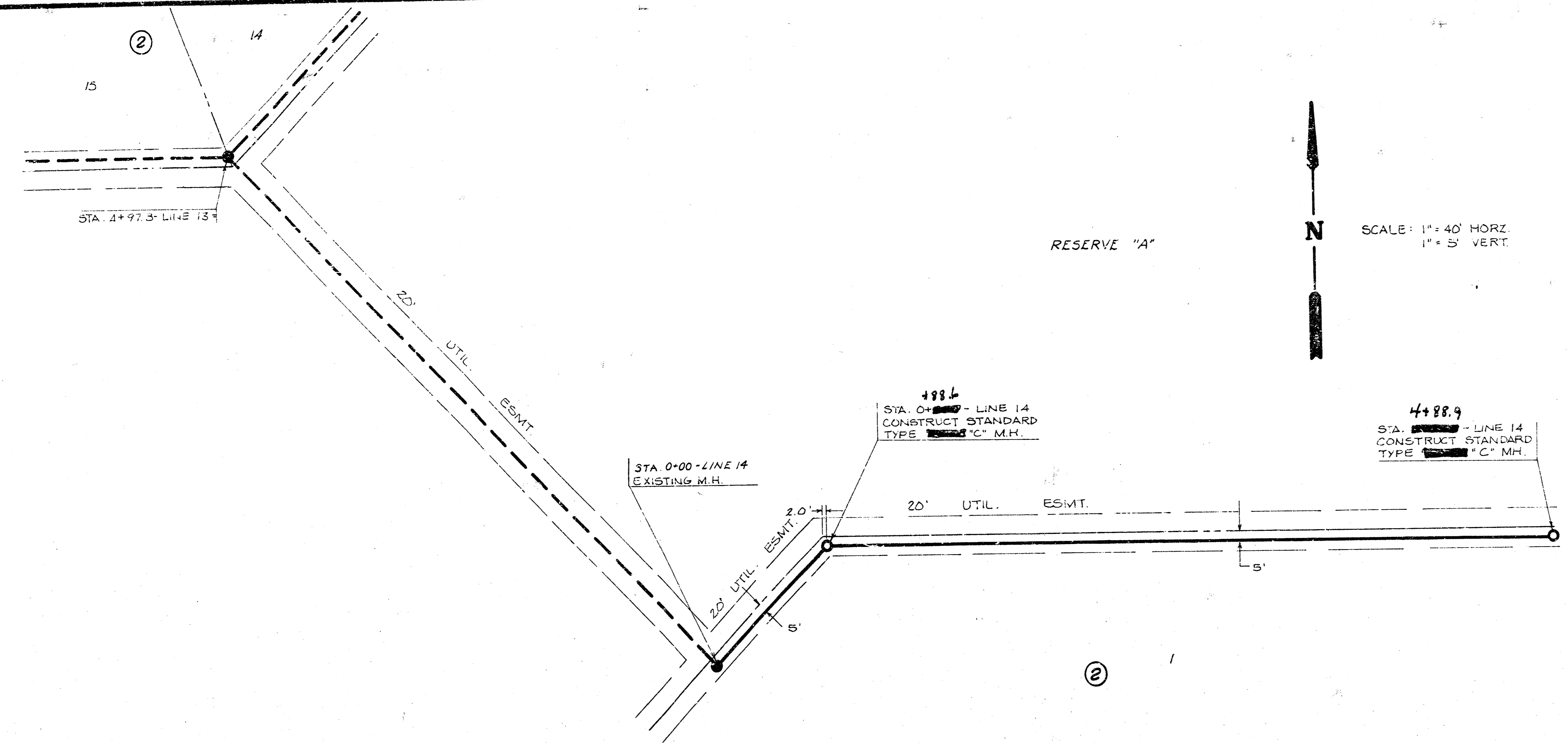


**LINE 8**  
**LINE 9**  
**LINE 11**

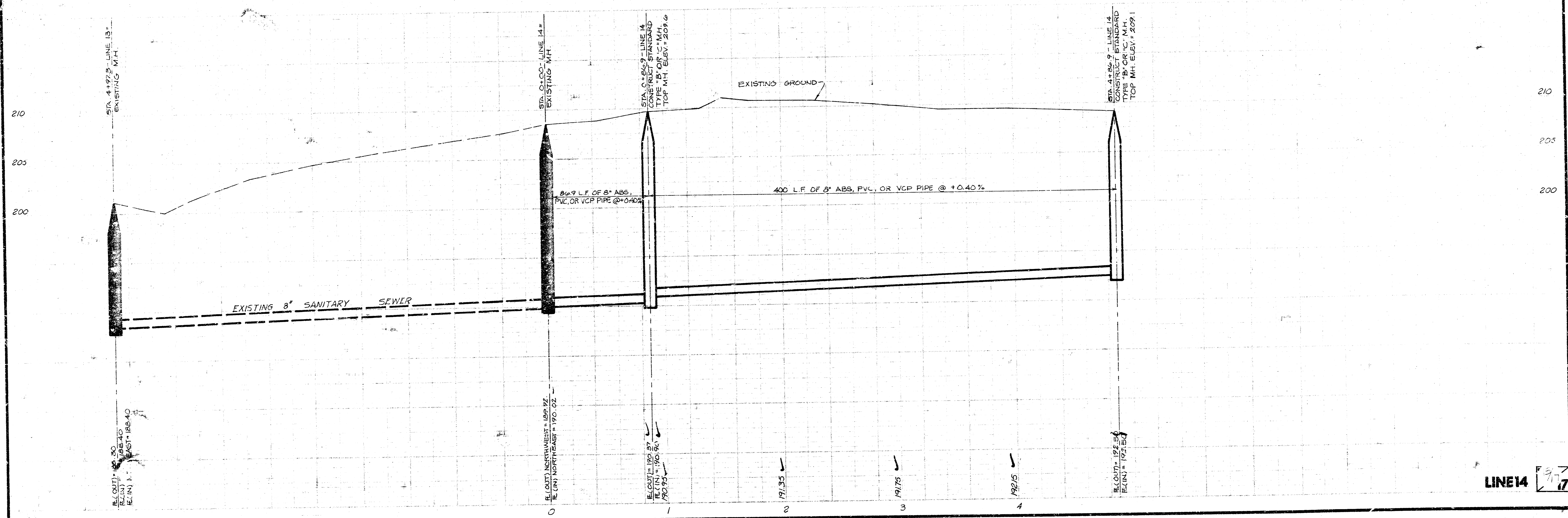




BLJESTEM VILLAGE  
 LATERAL 10 MAIN 22 W.I.S.  
 PROJECT NO.  
 468-76-245-809C4-000-000-001

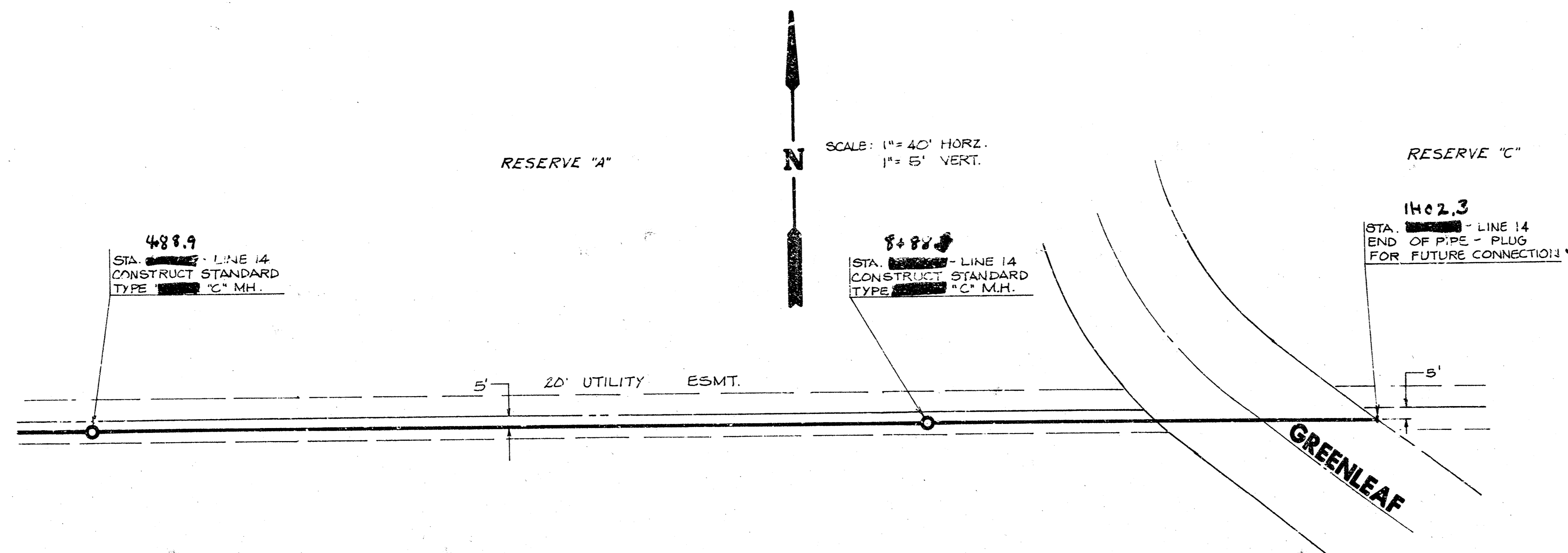


B.M. 1:	SPK. STEP IN S. FACE OF 3RD P.P. E. OF CENTER COR.	ELEV. = 211.54
B.M. 2:	SPK. STEP IN W. FACE OF 4TH P.P. E. OF CENTER COR.	ELEV. = 211.86
B.M. 3:	100 B.M. SPK. E. ROOT 2-6" BIDGE TREES 545' N. OF S. 1/4 COR. 50' LT.	ELEV. = 194.36
B.M. 4:	7' x 7' E. COR. N. HWALL. R.R. 55' 800' W. OF S.I. COR.	ELEV. = 205.10

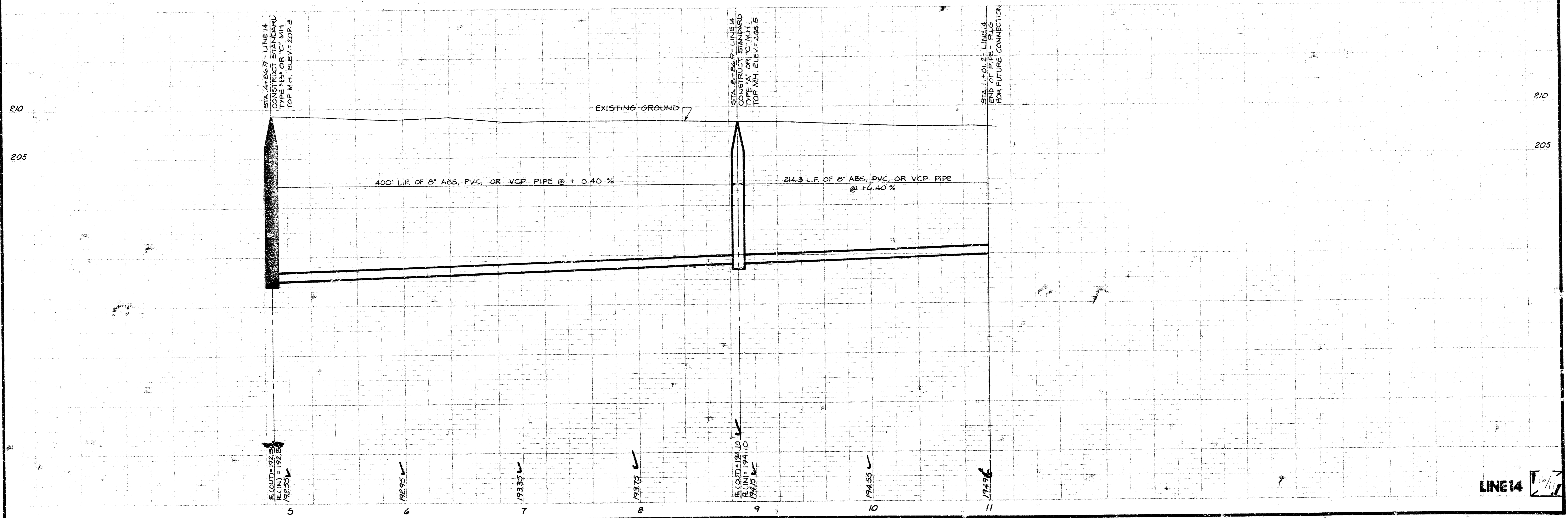


LINE 14 9/17

**BLUESTEM VLLAGE**  
 LATERAL 10 MAN 22 W.I.S.  
 PROJECT NO.  
 468-76-245-80904-000-000-001



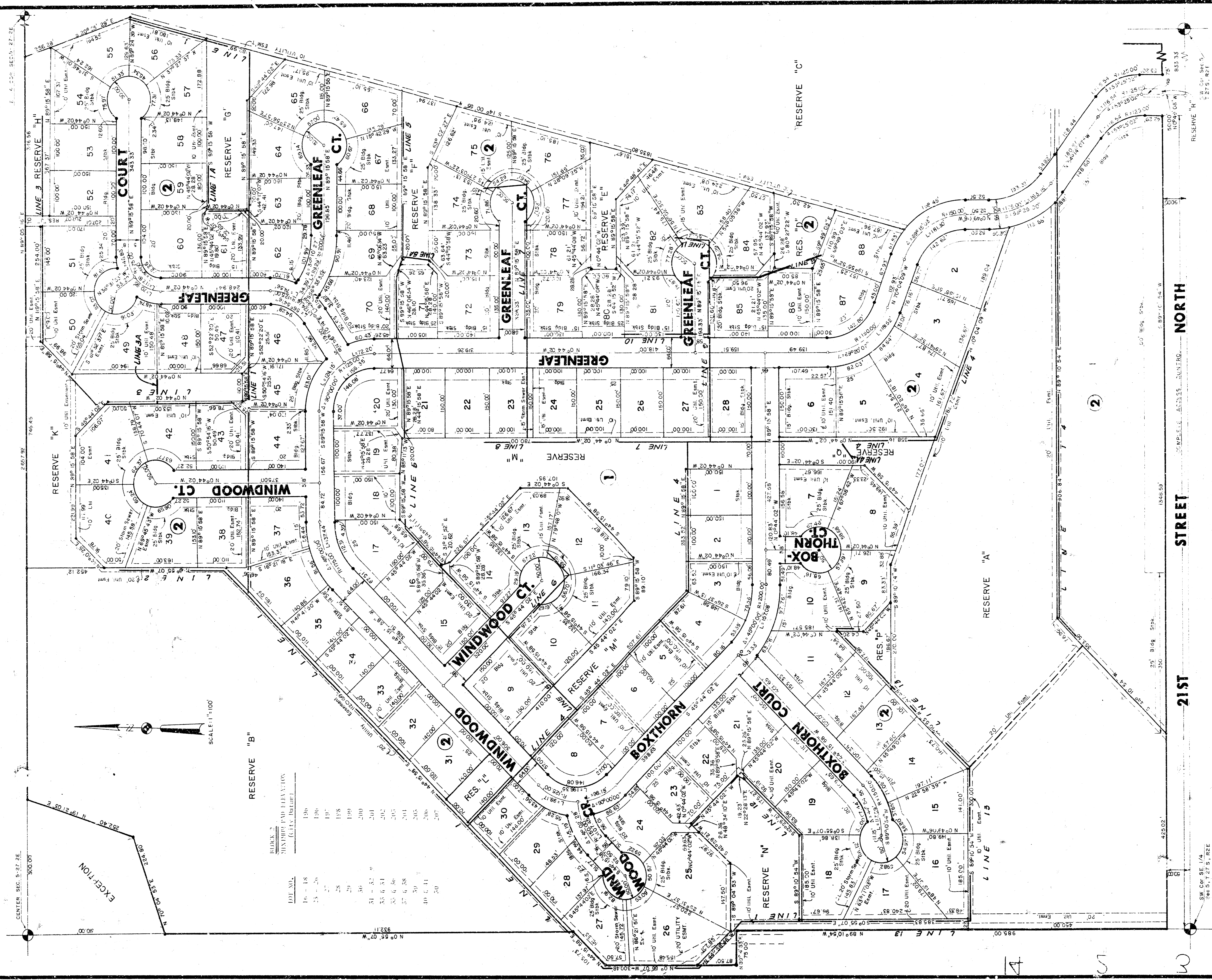
B.M. #1:	SPK. STIP IN S. FACE OF SRD. P.P. E. OF CENTER COR. ELEV. = 211.34
B.M. #2:	SPK. STIP IN W. FACE OF 4TH P.P. E. OF CENTER COR. ELEV. = 221.86
B.M. #3:	TOP BEST SPK. E. ROOT 2-4" HEDGE TREES 545' N. OF S. 1/4 COR. 50' LT. ELEV. = 194.56
B.M. #4:	1" N.E. COR. N. HWALL. RCB 285.50' W. OF S.E. COR. ELEV. = 205.10



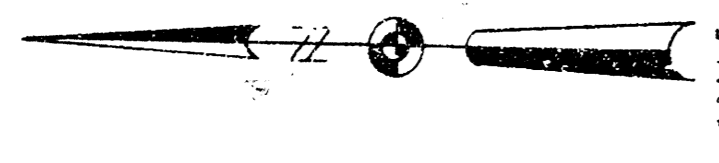
LINE 14

# FINAL PLAT OF BLUESTEM VILLAGE

AN ADDITION TO WICHITA, SEDGWICK COUNTY, KANSAS



EXCEPTION



RESERVE "B"

BLOCK 2  
MAYNARD FARM ESTATES  
(CITY BLOCK)

LOT NO.	ACRES
16	.18
17	.26
18	.27
19	.28
20	.29
21	.31
22	.33
23	.35
24	.37
25	.39
26	.41
27	.43

21ST STREET

STREET NORTH

SW COR. SE 1/4  
Sec 5, T.27 S., R.2 E.

RESERVE "N"

RESERVE "C"

RESERVE "D"

RESERVE "E"

RESERVE "G"

RESERVE "H"

RESERVE "I"

RESERVE "J"

RESERVE "K"

RESERVE "M"

RESERVE "P"

RESERVE "N"

RESERVE "C"

RESERVE "D"

RESERVE "E"

RESERVE "G"

RESERVE "H"

RESERVE "I"

RESERVE "J"

RESERVE "K"

RESERVE "M"

RESERVE "P"

RESERVE "N"

RESERVE "C"

RESERVE "D"

RESERVE "E"

RESERVE "G"

RESERVE "H"

RESERVE "I"

RESERVE "J"

RESERVE "K"

RESERVE "M"

RESERVE "P"

RESERVE "N"

RESERVE "C"

RESERVE "D"

RESERVE "E"

RESERVE "G"

RESERVE "H"

RESERVE "I"

RESERVE "J"

RESERVE "K"

RESERVE "M"

RESERVE "P"

RESERVE "N"

RESERVE "C"

RESERVE "D"

RESERVE "E"

RESERVE "G"

RESERVE "H"

RESERVE "I"

RESERVE "J"

RESERVE "K"

RESERVE "M"

RESERVE "P"

RESERVE "N"

RESERVE "C"

RESERVE "D"

RESERVE "E"

RESERVE "G"

RESERVE "H"

RESERVE "I"

RESERVE "J"

RESERVE "K"

RESERVE "M"

RESERVE "P"

RESERVE "N"

RESERVE "C"

RESERVE "D"

RESERVE "E"

RESERVE "G"

RESERVE "H"

RESERVE "I"

RESERVE "J"

RESERVE "K"

RESERVE "M"

RESERVE "P"

RESERVE "N"

RESERVE "C"

RESERVE "D"

RESERVE "E"

RESERVE "G"

RESERVE "H"

RESERVE "I"

RESERVE "J"

RESERVE "K"

RESERVE "M"

RESERVE "P"

RESERVE "N"

RESERVE "C"

RESERVE "D"

RESERVE "E"

RESERVE "G"

RESERVE "H"

RESERVE "I"

RESERVE "J"

RESERVE "K"

RESERVE "M"

RESERVE "P"

RESERVE "N"

RESERVE "C"

RESERVE "D"

RESERVE "E"

RESERVE "G"

RESERVE "H"

RESERVE "I"

RESERVE "J"

RESERVE "K"

RESERVE "M"

RESERVE "P"

RESERVE "N"

RESERVE "C"

RESERVE "D"

RESERVE "E"

RESERVE "G"

RESERVE "H"

RESERVE "I"

RESERVE "J"

RESERVE "K"

RESERVE "M"

RESERVE "P"

RESERVE "N"

RESERVE "C"

RESERVE "D"

RESERVE "E"

RESERVE "G"

RESERVE "H"

RESERVE "I"

RESERVE "J"

RESERVE "K"

RESERVE "M"

RESERVE "P"

RESERVE "N"

RESERVE "C"

RESERVE "D"

RESERVE "E"

RESERVE "G"

RESERVE "H"

RESERVE "I"

RESERVE "J"

RESERVE "K"

RESERVE "M"

RESERVE "P"

RESERVE "N"

RESERVE "C"

RESERVE "D"

RESERVE "E"

RESERVE "G"

RESERVE "H"

RESERVE "I"

RESERVE "J"

RESERVE "K"

RESERVE "M"

RESERVE "P"

RESERVE "N"

RESERVE "C"

RESERVE "D"

RESERVE "E"

RESERVE "G"

RESERVE "H"

RESERVE "I"

RESERVE "J"

RESERVE "K"

RESERVE "M"

RESERVE "P"

RESERVE "N"

RESERVE "C"

RESERVE "D"

RESERVE "E"

RESERVE "G"

RESERVE "H"

RESERVE "I"

RESERVE "J"

RESERVE "K"

RESERVE "M"

RESERVE "P"

RESERVE "N"

RESERVE "C"

RESERVE "D"

RESERVE "E"

RESERVE "G"

RESERVE "H"

RESERVE "I"

RESERVE "J"

RESERVE "K"

RESERVE "M"

RESERVE "P"

RESERVE "N"

RESERVE "C"

RESERVE "D"

RESERVE "E"

RESERVE "G"

RESERVE "H"

RESERVE "I"

RESERVE "J"

RESERVE "K"

RESERVE "M"

RESERVE "P"

RESERVE "N"

RESERVE "C"

RESERVE "D"

RESERVE "E"

RESERVE "G"

RESERVE "H"

RESERVE "I"

RESERVE "J"

RESERVE "K"

RESERVE "M"

RESERVE "P"

RESERVE "N"

RESERVE "C"

RESERVE "D"

RESERVE "E"

RESERVE "G"

RESERVE "H"

RESERVE "I"

RESERVE "J"

RESERVE "K"

RESERVE "M"

RESERVE "P"

RESERVE "N"

RESERVE "C"

RESERVE "D"

RESERVE "E"

RESERVE "G"

RESERVE "H"

RESERVE "I"

RESERVE "J"

RESERVE "K"

RESERVE "M"

RESERVE "P"

RESERVE "N"

RESERVE "C"

RESERVE "D"

RESERVE "E"

RESERVE "G"

RESERVE "H"

RESERVE "I"

RESERVE "J"

RESERVE "K"

RESERVE "M"

RESERVE "P"

RESERVE "N"

RESERVE "C"

RESERVE "D"

RESERVE "E"

RESERVE "G"

RESERVE "H"

RESERVE "I"

RESERVE "J"

RESERVE "K"

RESERVE "M"

RESERVE "P"

RESERVE "N"

RESERVE "C"

RESERVE "D"

RESERVE "E"

RESERVE "G"

RESERVE "H"

RESERVE "I"

RESERVE "J"

RESERVE "K"

RESERVE "M"