

WOODSPRING

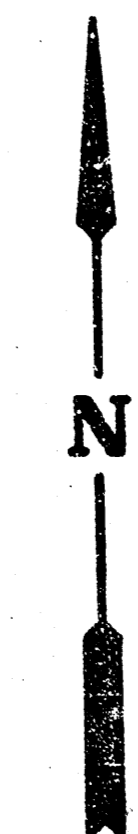
LATERAL 20, MAIN 22, W.I.S.

PROJECT NO.
468-76-245-81269-000-000-001

CITY OF WICHITA, KANSAS
R.W. BRUGGEMAN, CITY ENGINEER
MAY, 1983

CAUTION: High pressure KANEB pipeline. Contact
24 hours prior to excavation. Call Jim Strickland
at 1-316-262-1408.

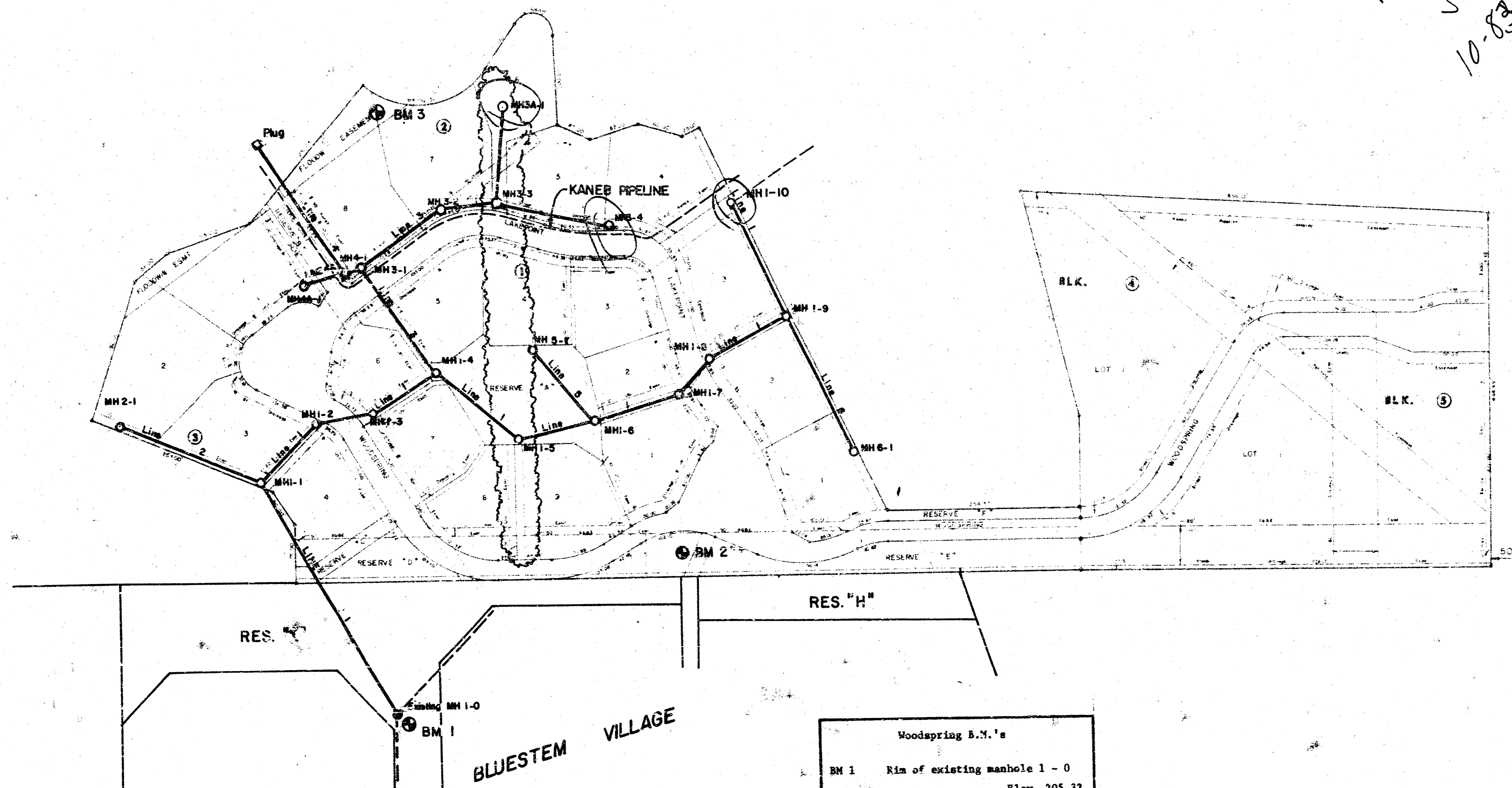
*As Built
S.F.K.
10-83*



Scale: 1"=100'

INDEX TO DRAWINGS

SHEET NO.	DESCRIPTION
1	TITLE SHEET
2	LINE 1
3	LINE 1
4	LINE 2 & 3
5	LINE 4, 4A, 5, & 6
6	MANHOLE DETAILS
7	FINAL PLAT



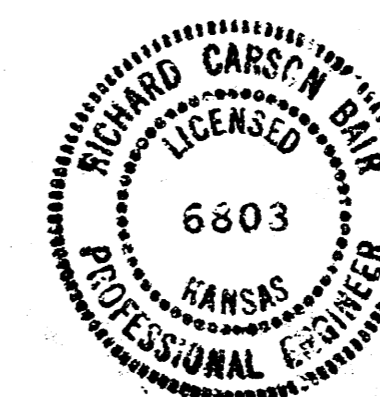
Prior to excavation in Reserve K the contractor shall notify Tallgrass to locate sprinkler lines and to allow time for removal of trees and shrubs. Contact Ken Purg at 681-0243.

The cost of removal and repair of the sprinkler system and all utilities shall be subsidiary to the installation of the sewer lines.

Woodspring B.M.'s	
BM 1	Rim of existing manhole 1 - 0 Elev. 205.32
BM 2	Spike step in south face of K&WB "Y" pole. Elev. 211.32
BM 3	Square cut on southeast corner of pond dam. Elev. 207.86

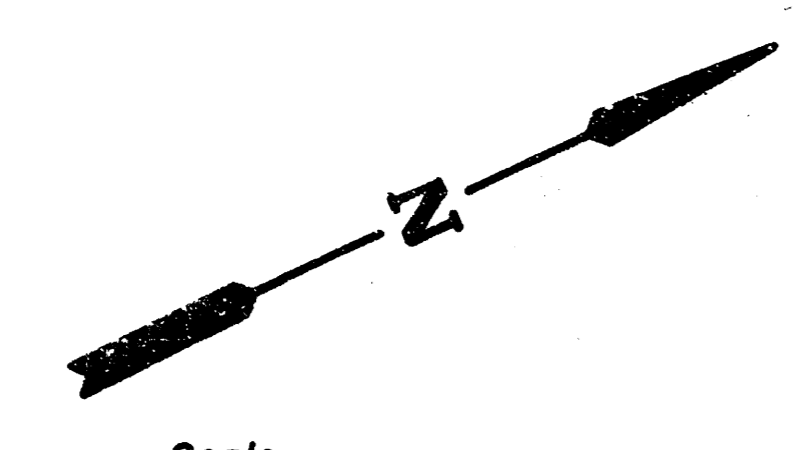
GENERAL NOTES

- RISER PIPE SHALL BE INSTALLED TO SERVE INDIVIDUAL LOTS OR TRACTS IN CONJUNCTION WITH NEW SANITARY SEWER CONSTRUCTION, UNLESS OTHERWISE ORDERED BY THE ENGINEER, BECAUSE OF GROUND WATER, UNSTABLE SOIL OR UNUSUALLY DEEP CONSTRUCTION. RISEK LOCATIONS SHALL BE AS APPROVED BY THE PROPERTY OWNER WITH THE CONCURRENCE OF THE ENGINEER. INSTALLATION OF RISERS OR SEWERS BECAUSE OF UNUSUAL DEPTH WILL BE REQUIRED WHEN THE CENTER IS DEEPER THAN TWELVE FEET (12'). THE CONTRACTOR WILL BE REQUIRED TO FILE WRITTEN DOCUMENTATION WITH THE ENGINEER IN A FORM APPROVED BY THE ENGINEER INDICATING THE LOCATIONS WHERE RISERS ARE TO BE INSTALLED AS REQUESTED BY THE PROPERTY OWNER OR HIS AUTHORIZED REPRESENTATIVE. RISER PIPE CONSTRUCTION SHALL CONFORM TO THE REQUIREMENTS AS SHOWN ON THE STANDARD RISER DETAIL SHEET.
- THE CONTRACTOR SHALL BE RESPONSIBLE FOR PRESERVING PROPERTY TREES WHICH EXIST ON THE PROPERTY TRACTS WHICH ARE TO BE SERVED BY THE SEWER SYSTEM OPERATIONS. SUCH TREES SHALL BE PRESERVED OR REPLANTED AT THE OPTION OF A LICENSED PROFESSIONAL ENGINEER AS SHOWN IN THE PROPOSAL.



	WOODSPRING SANITARY SEWER EXTENSIONS	Design Checked by Created by Date Job No.
	MID-KANSAS ENGINEERING CONSULTANTS PA 240 NORTH ROCK ROAD SUITE 130 WICHITA, KANSAS 67206	682-6561

FILMED FROM THE BEST AVAILABLE COPY



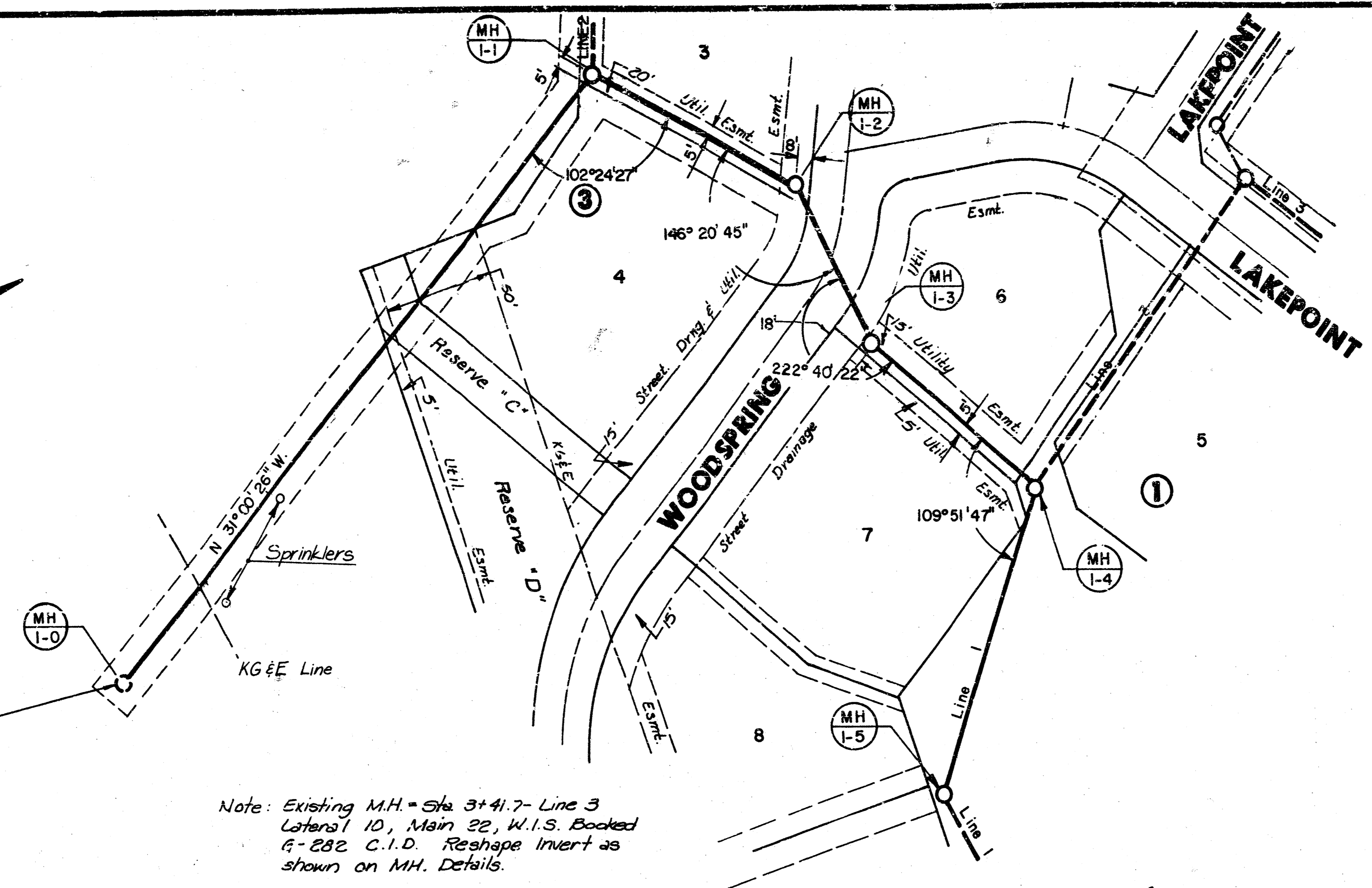
Scale:
 1" = 40' Horiz.
 1" = 5' Vert.

Raise Mh 1-0 1'-6". The cost shall be subsidiary to the installation of the sewer lines.

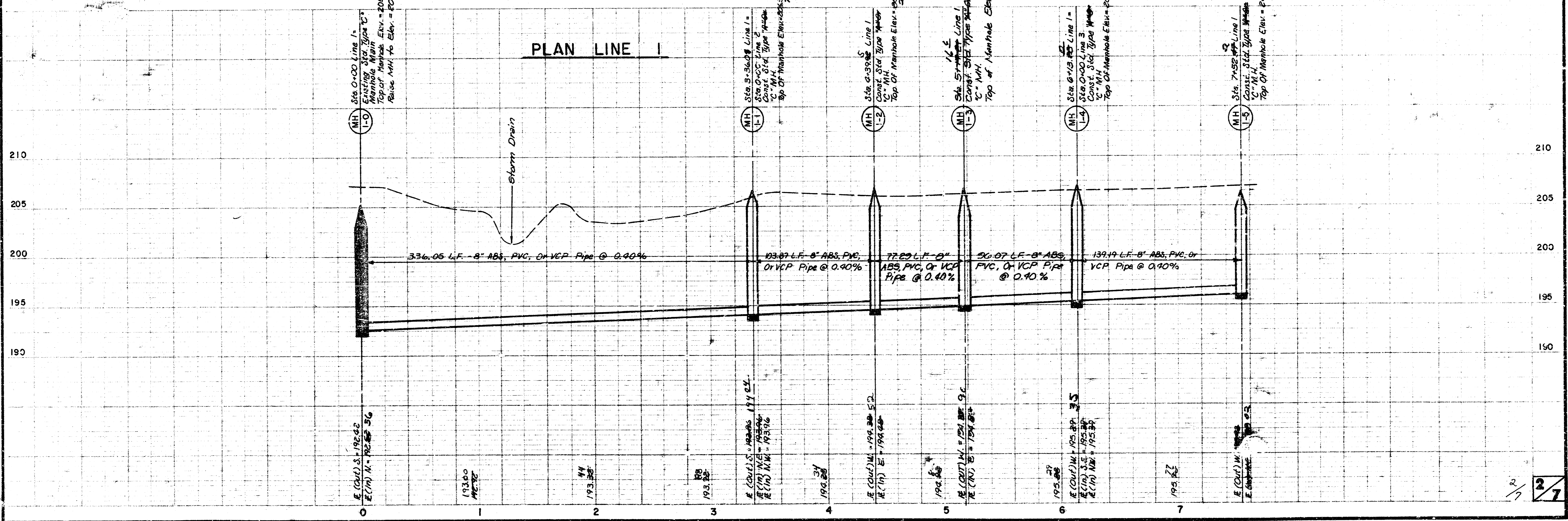
BM 1 Kim of existing manhole 1-0
 Elev. 205.32

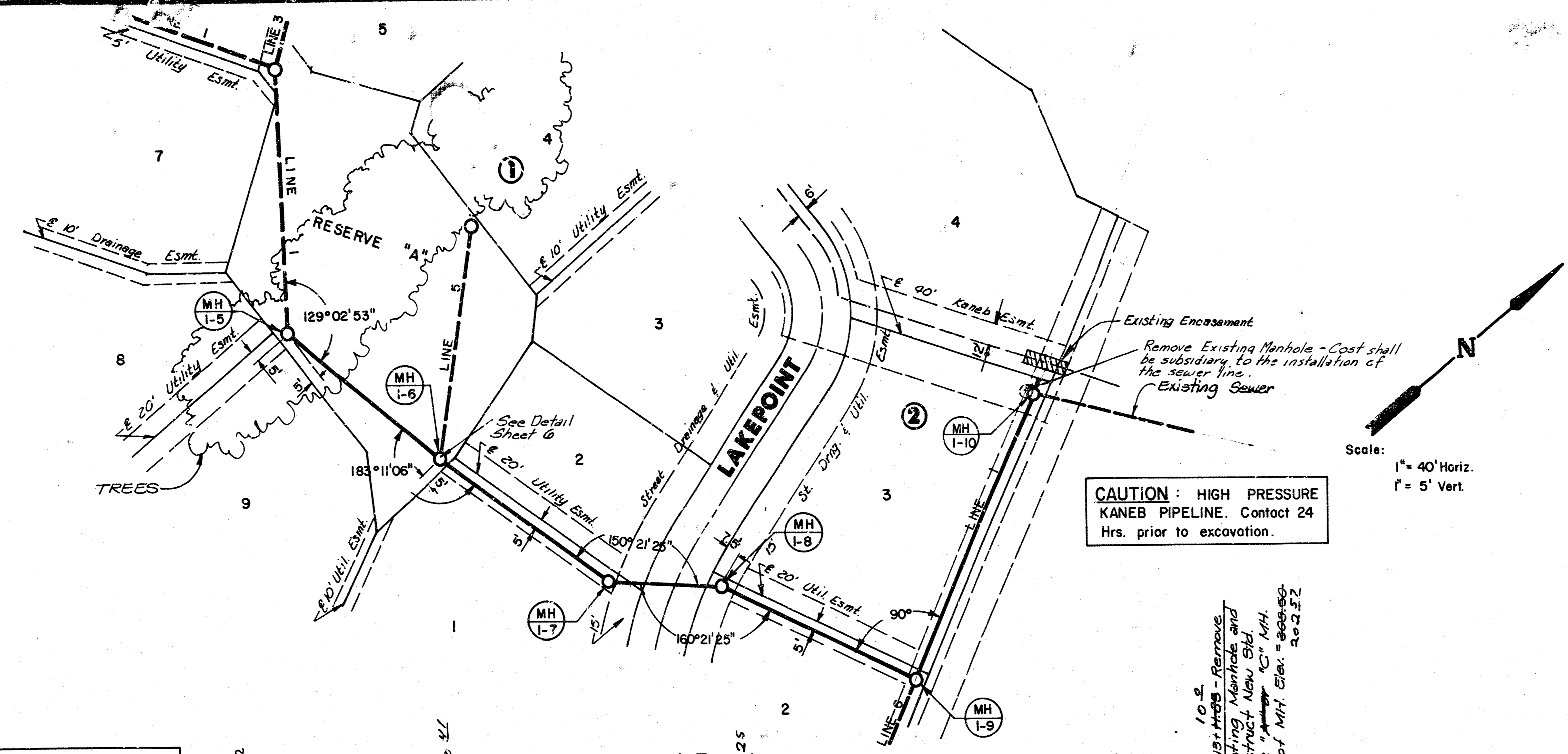
Note: Existing M.H. = Sta 3+41.7- Line 3
 Lateral 10, Main 22, W.I.S. Booked
 G-282 C.I.D. Reshape Invert as shown on M.H. Details.

As Built
 6-1-1
 10-83



PLAN LINE 1





*As Built
 J.L.L.
 10-83*

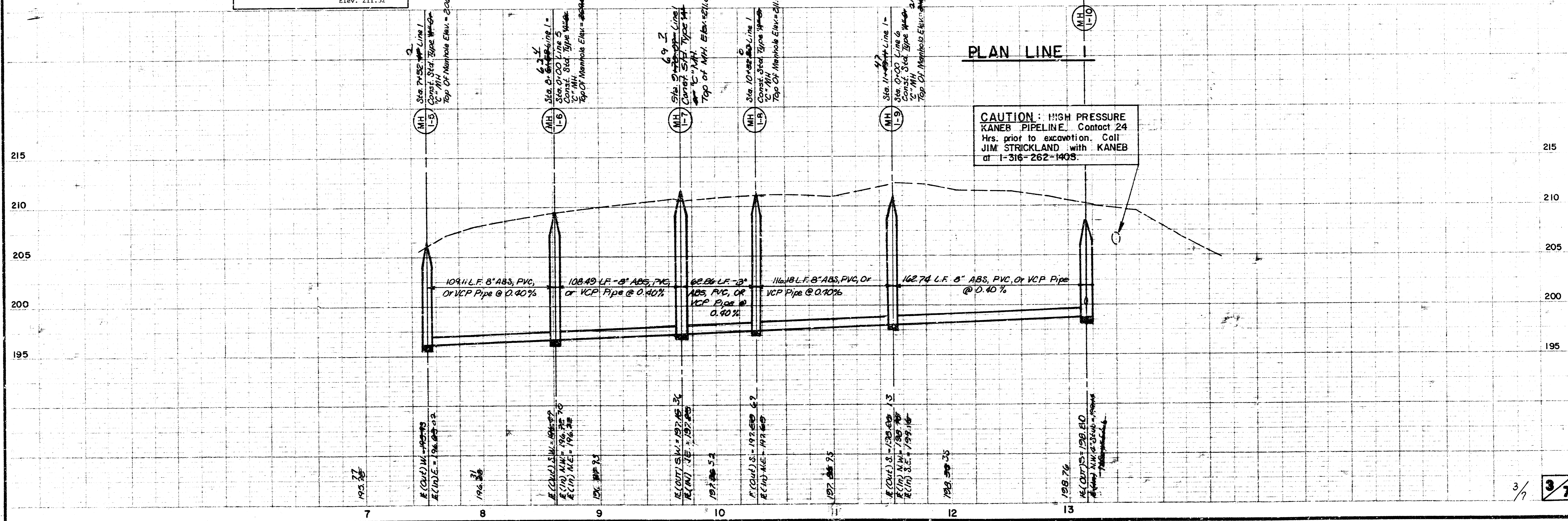
Scale:
 1" = 40' Horiz.
 1" = 5' Vert.

Plan Sheet Revised 8/5/83

BM 2 Spike step in south face of K6&E "I" pole.
 Elev. 211.32

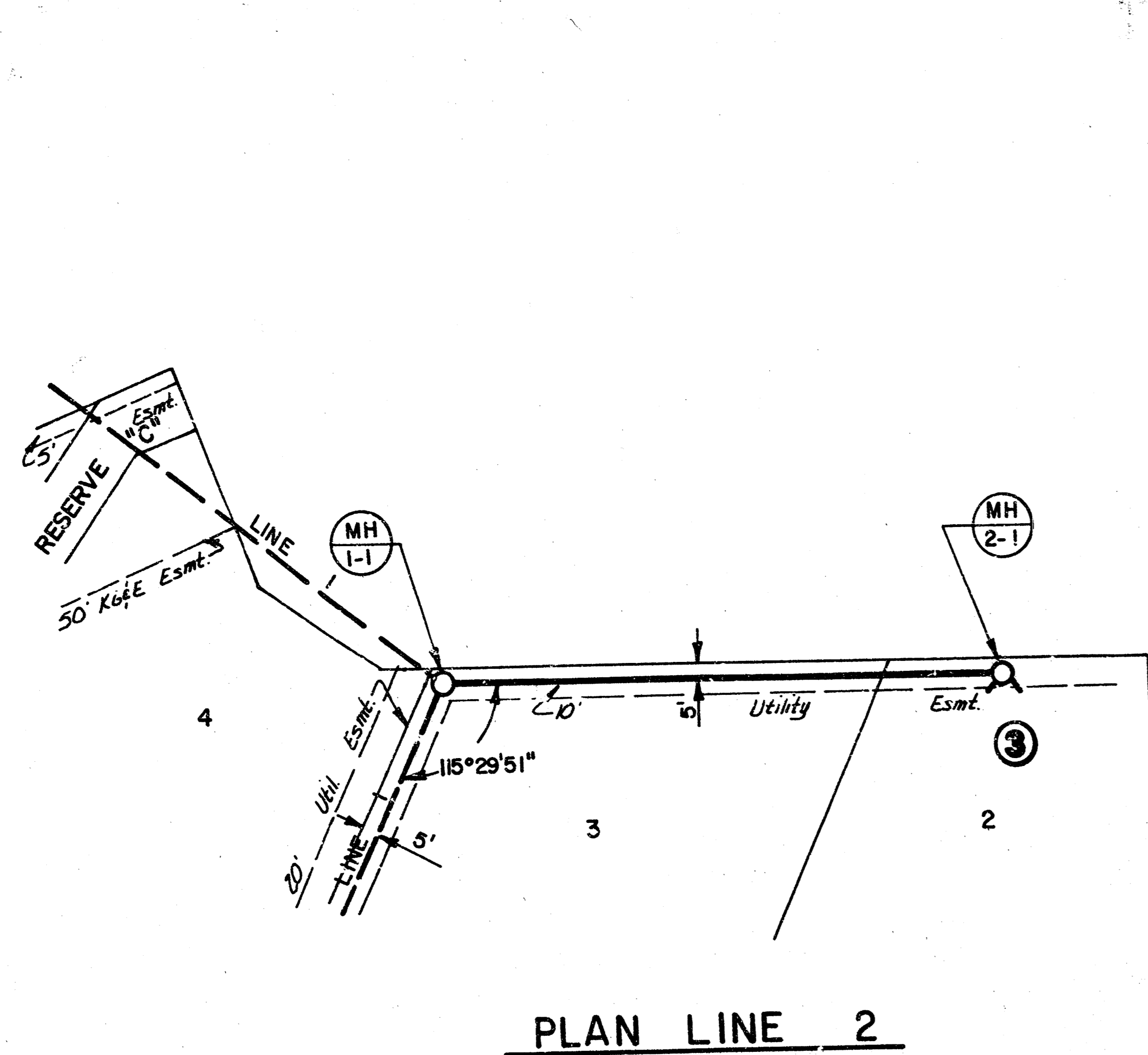
PLAN LINE 25

PLAN LINE 1



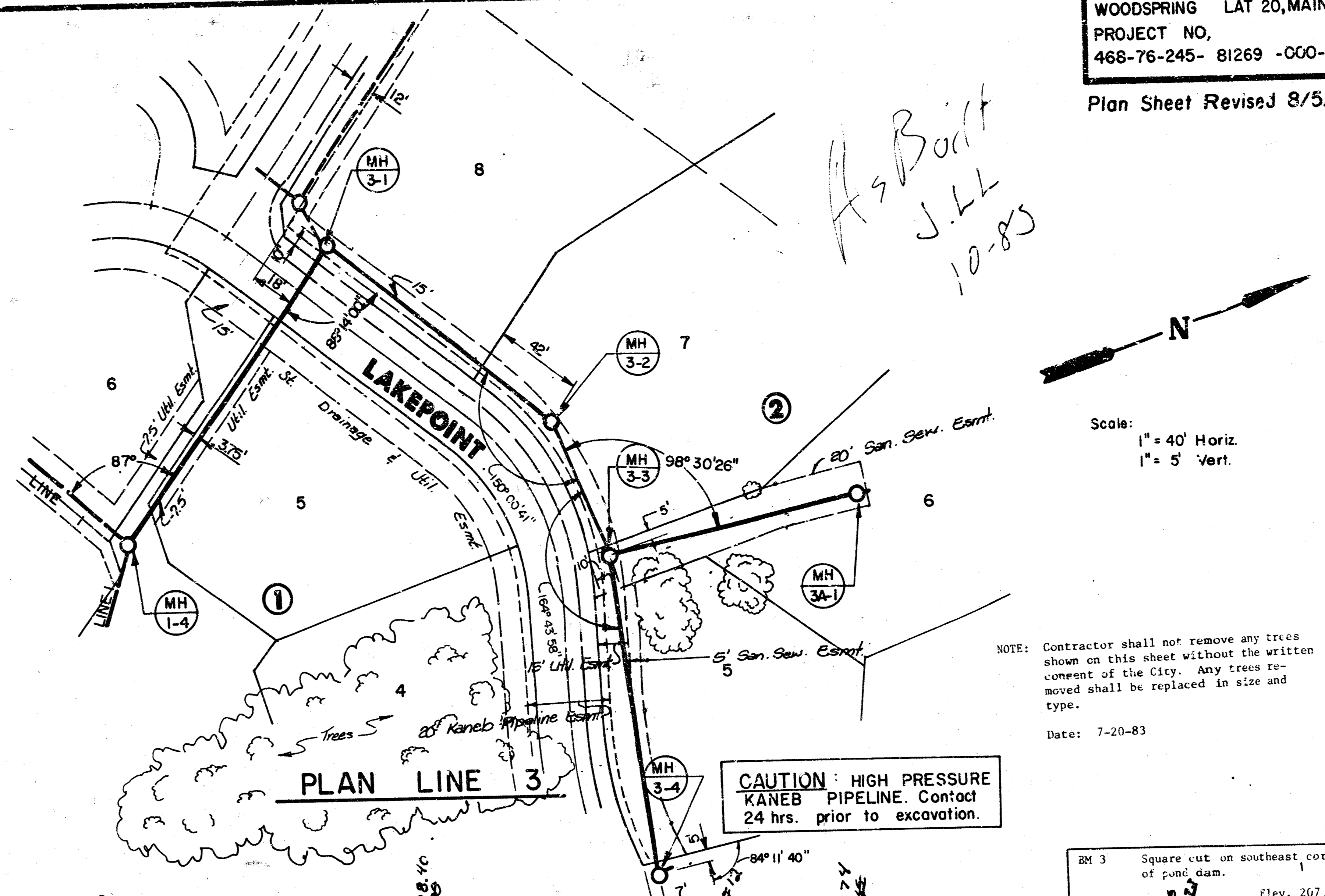
CAUTION: HIGH PRESSURE KANEB PIPELINE. Contact 24 Hrs. prior to excavation. Call JIM STRICKLAND with KANEB at 1-316-262-1403.

*As Built
 J.L.L.
 10-85*



PLAN LINE 2

Scale:
 1" = 40' Horiz.
 1" = 5' Vert.



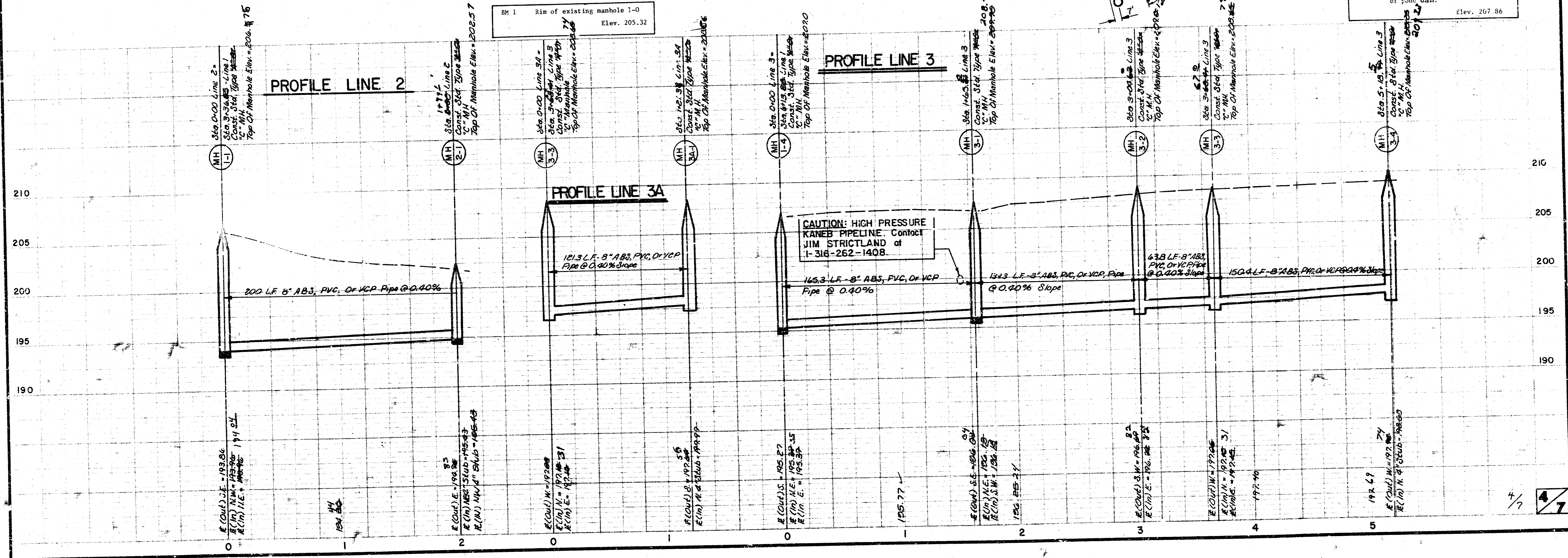
PLAN LINE 3

Scale:
 1" = 40' Horiz.
 1" = 5' Vert.

NOTE: Contractor shall not remove any trees shown on this sheet without the written consent of the City. Any trees removed shall be replaced in size and type.
 Date: 7-20-83

CAUTION: HIGH PRESSURE
 KANEB PIPELINE. Contact
 24 hrs. prior to excavation.

BM 3 Square cut on southeast corner of pond dam.
 Elev. 267.86



PROFILE LINE 2

PROFILE LINE 3

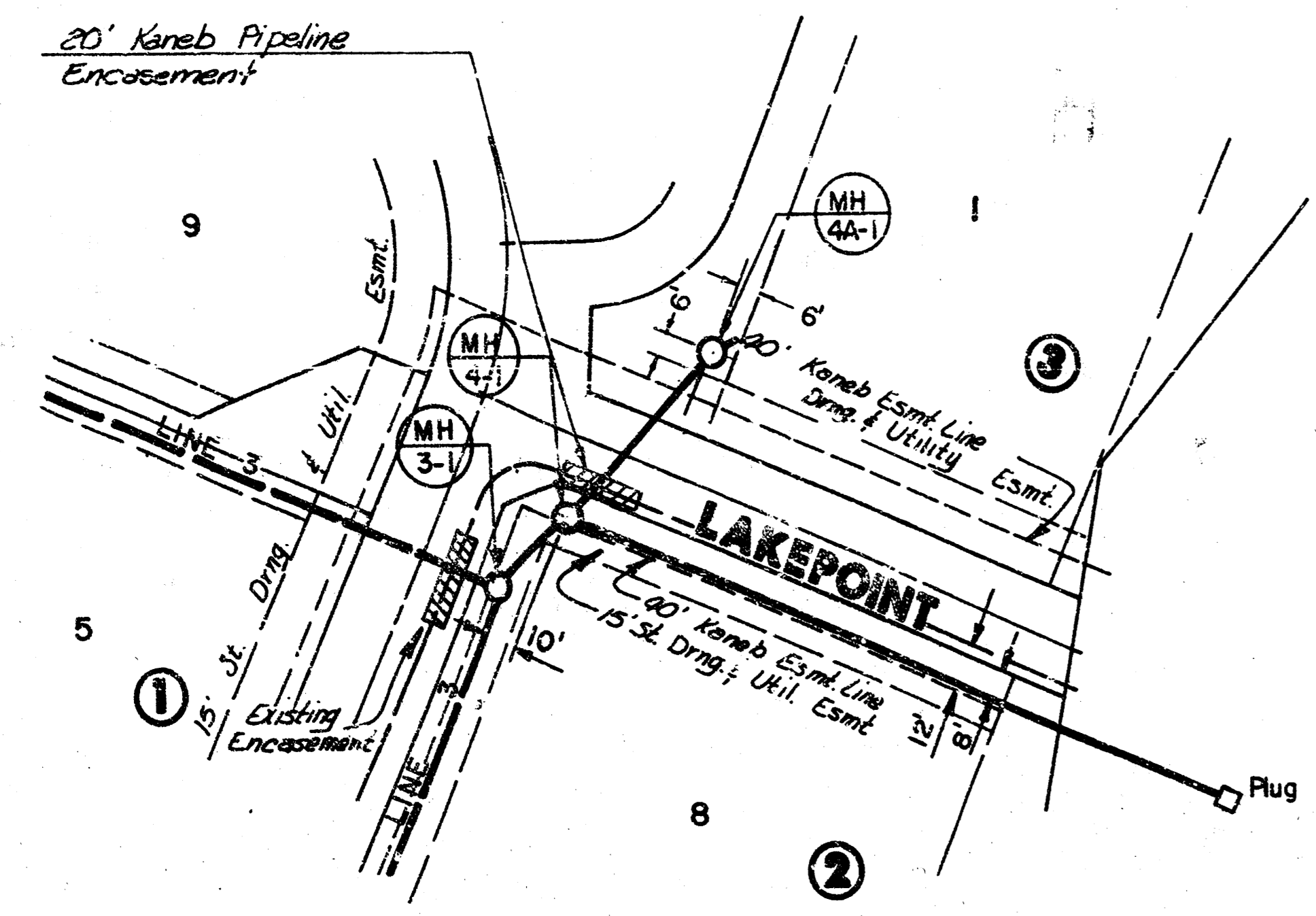
PROFILE LINE 3A

CAUTION: HIGH PRESSURE
 KANEB PIPELINE. Contact
 JIM STRICTLAND at
 1-318-262-1408.

WOODSPRING LAT 20, MAIN 22, W.I.S.
 PROJECT NO.
 468-76-245-81263-000-000-001

THE CONTRACTOR SHALL EXCAVATE AND BACKFILL FOR THE ENCASUREMENT OF THE KANEB PIPELINE. THE KANEB PIPELINE COMPANY WILL INSTALL THE ENCASEMENT PIPE AROUND THEIR PIPE. CONTRACTOR SHALL BE PAID FOR EXPOSING THE PIPE AND BACKFILL ONLY.

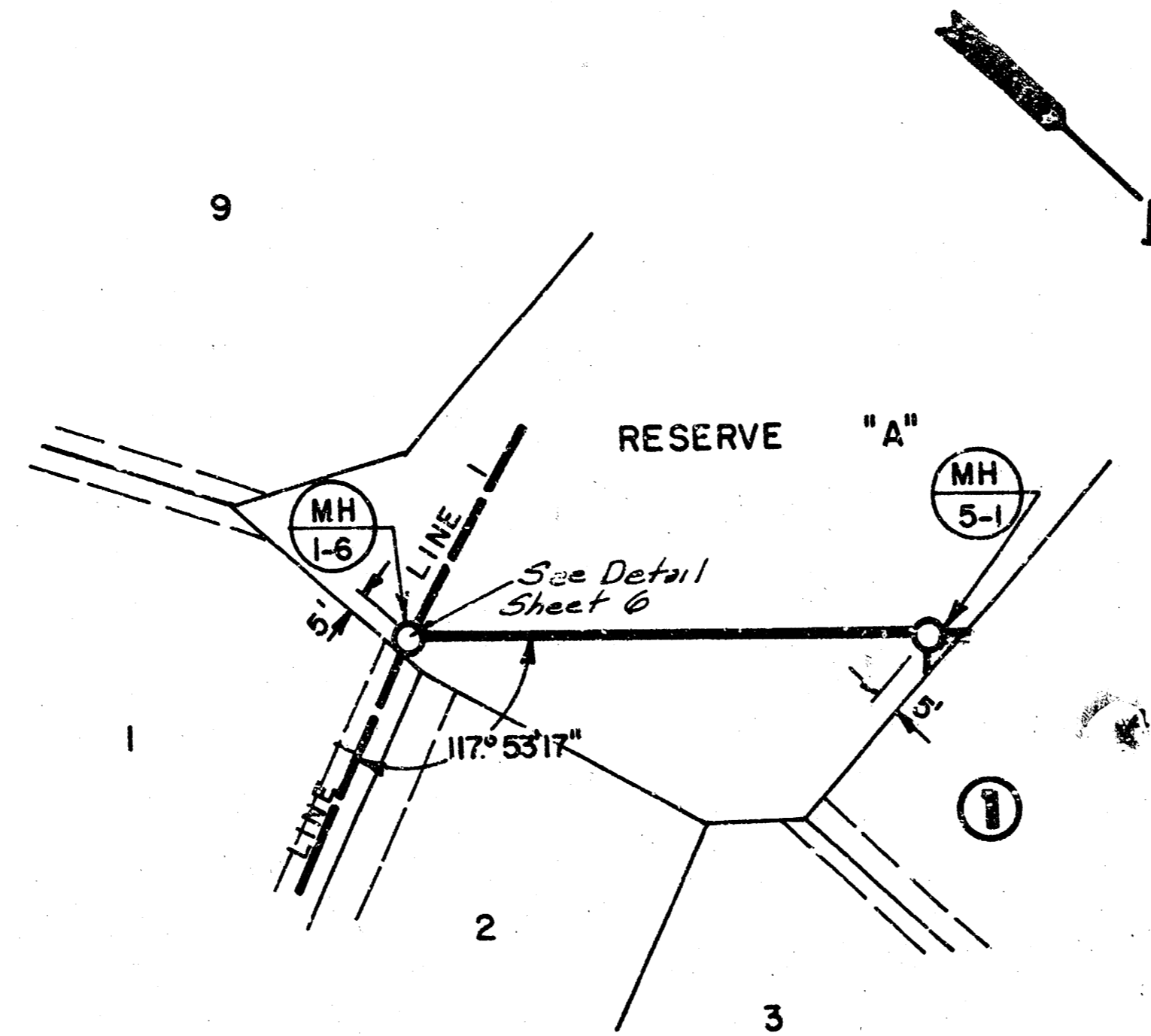
*As Built
 J.L.L.
 10-83*



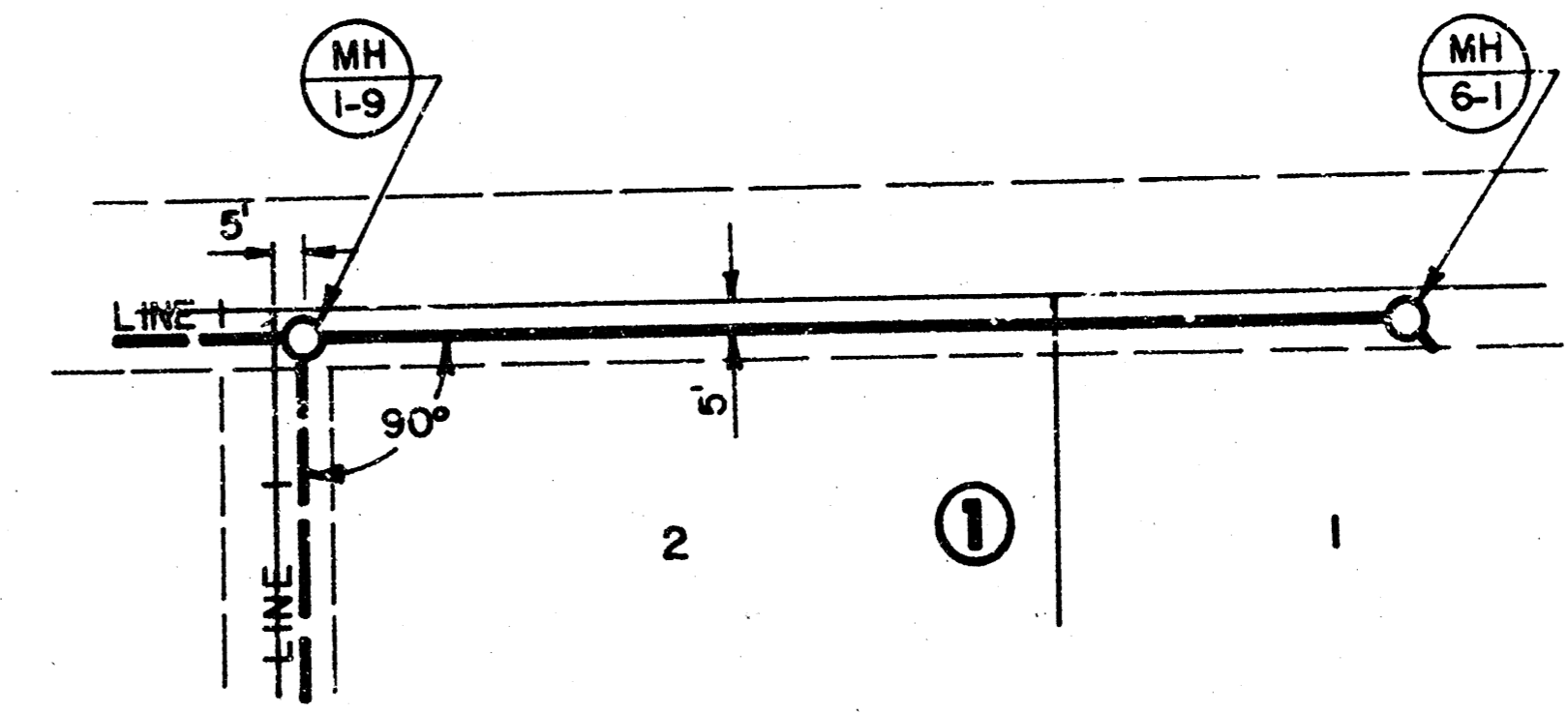
PLAN LINE 4 & 4A

CAUTION: HIGH PRESSURE KANEB PIPELINE CONTACT 24 HRS PRIOR TO EXCAVATION

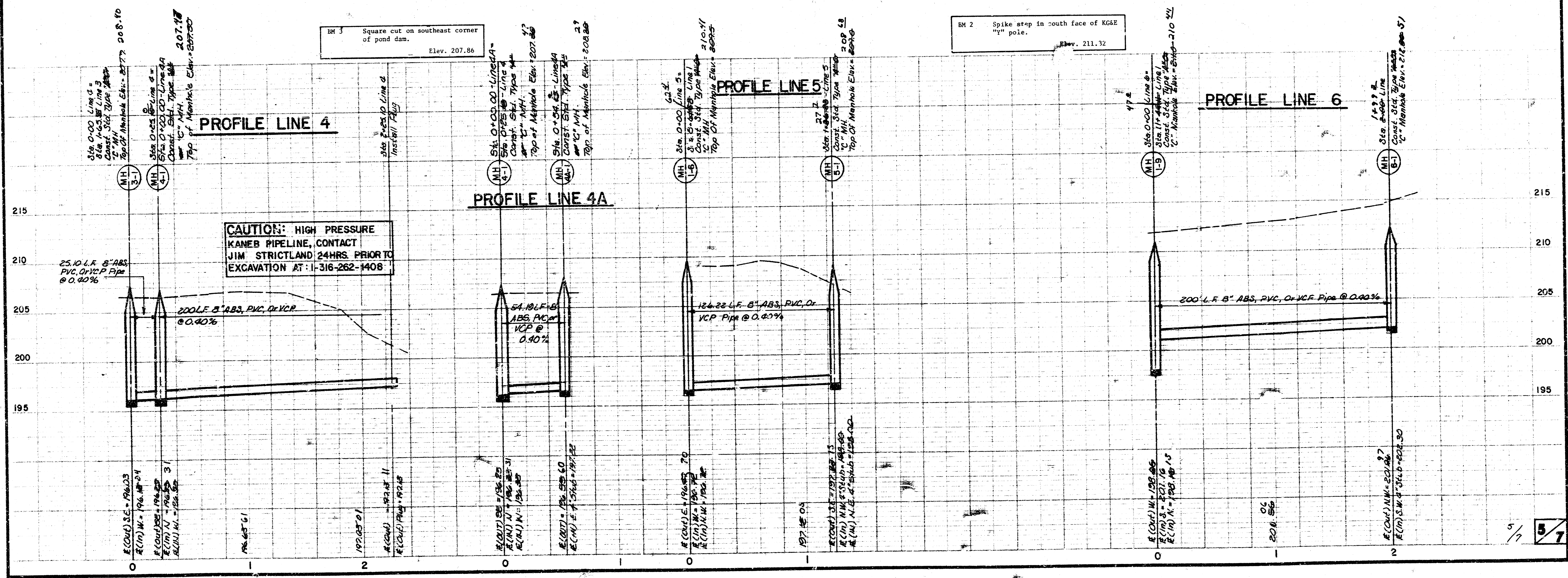
NOTE: Design Water Surface Elev. = 206.70 (100 Yr.)



PLAN LINE 5



PLAN LINE 6



CAUTION: HIGH PRESSURE KANEB PIPELINE, CONTACT JIM STRICTLAND 24 HRS. PRIOR TO EXCAVATION AT: 1-316-262-1408

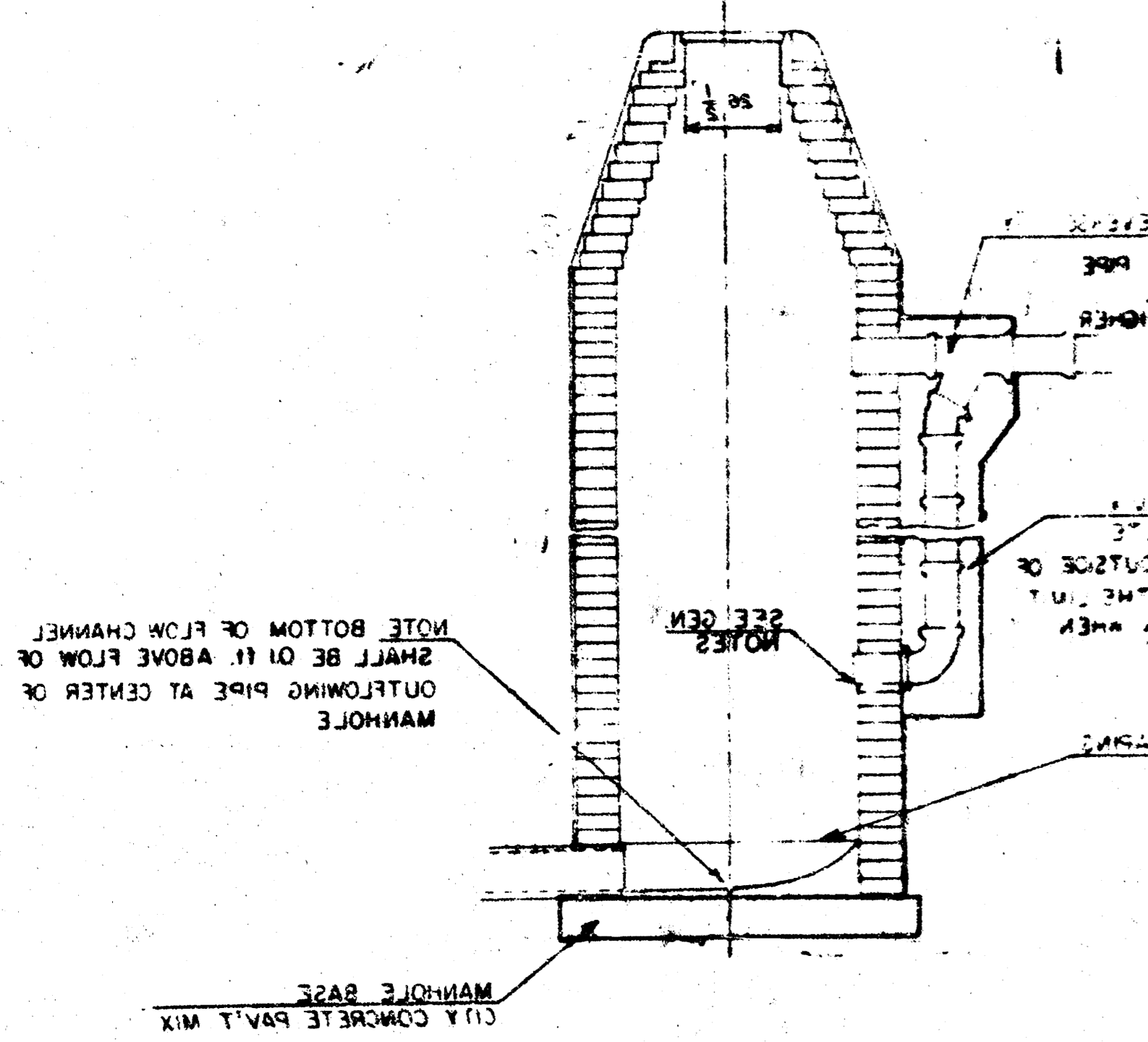
SEWER APPURTENANCES DETAILS

ADOPTED AS STANDARD DESIGN

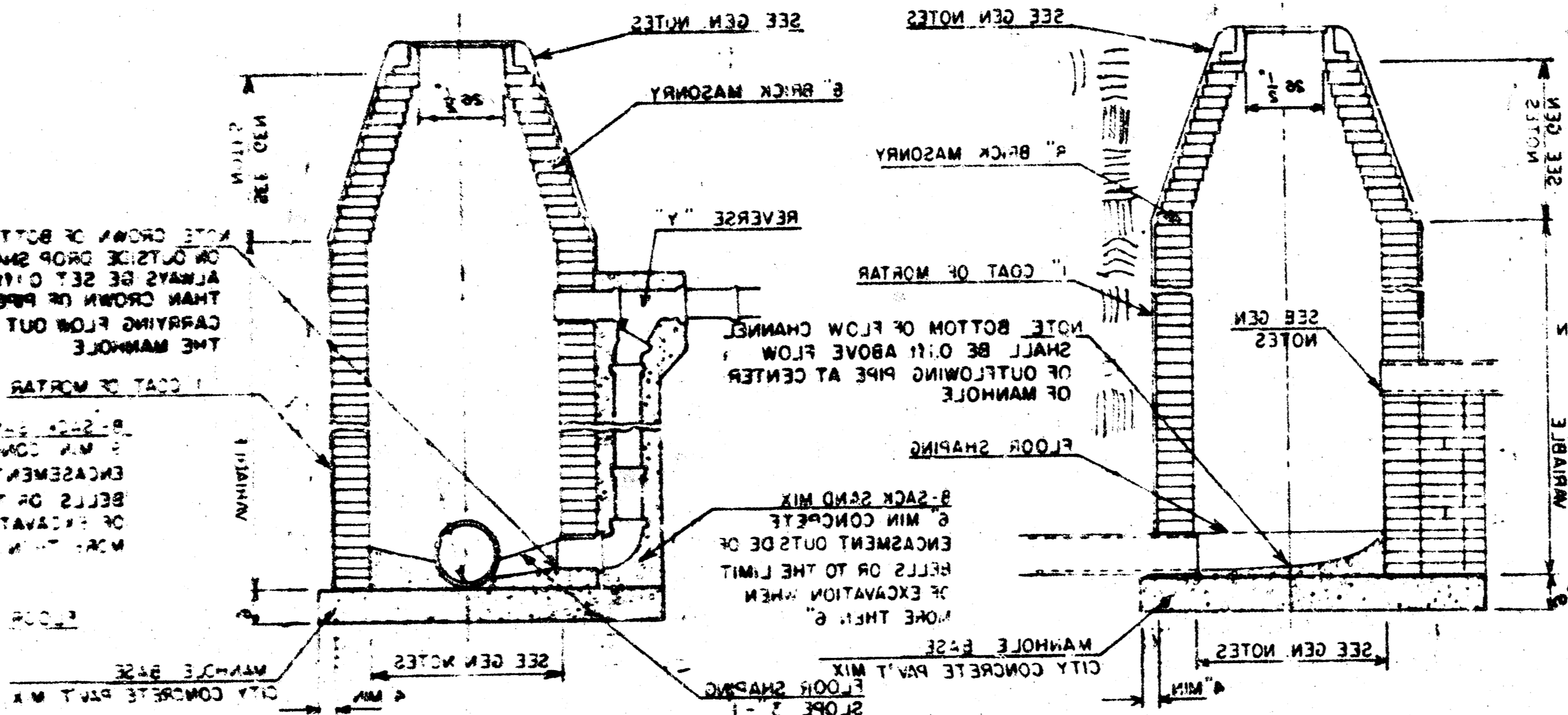
BY

CITY of WICHITA, KANSAS

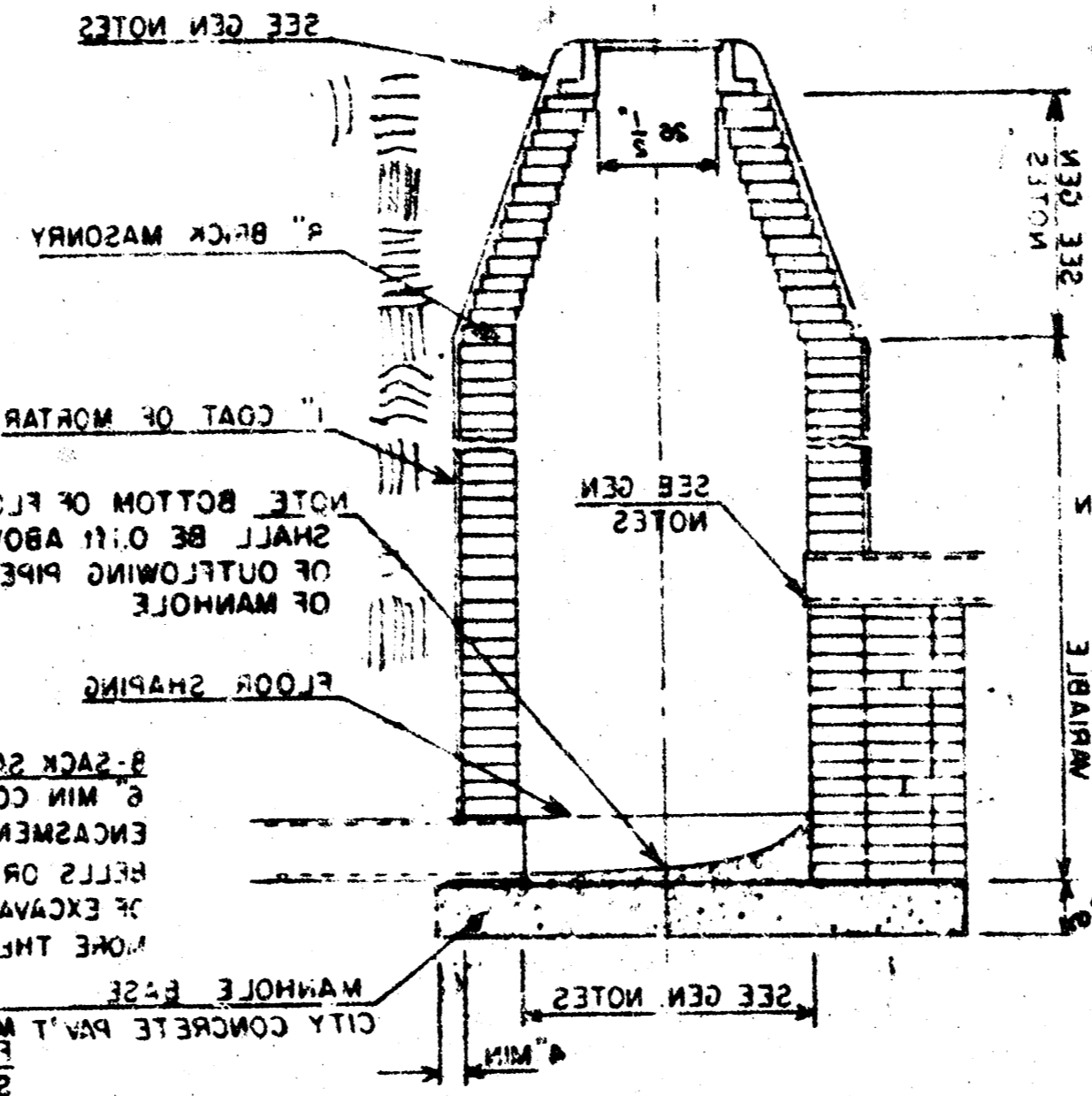
DETAIL OF OUTSIDE DROP
CONSTRUCTED ON EXISTING MANHOLE



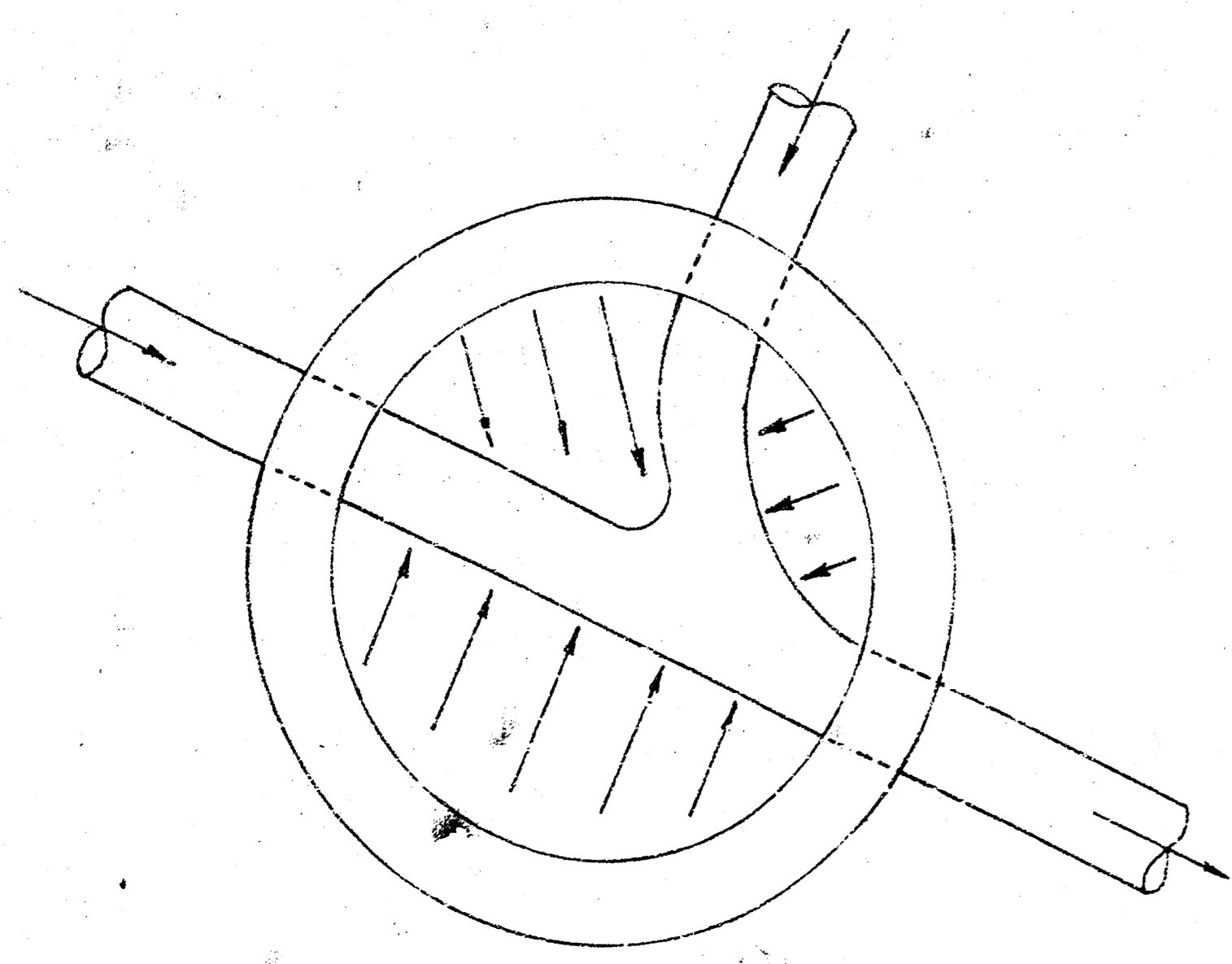
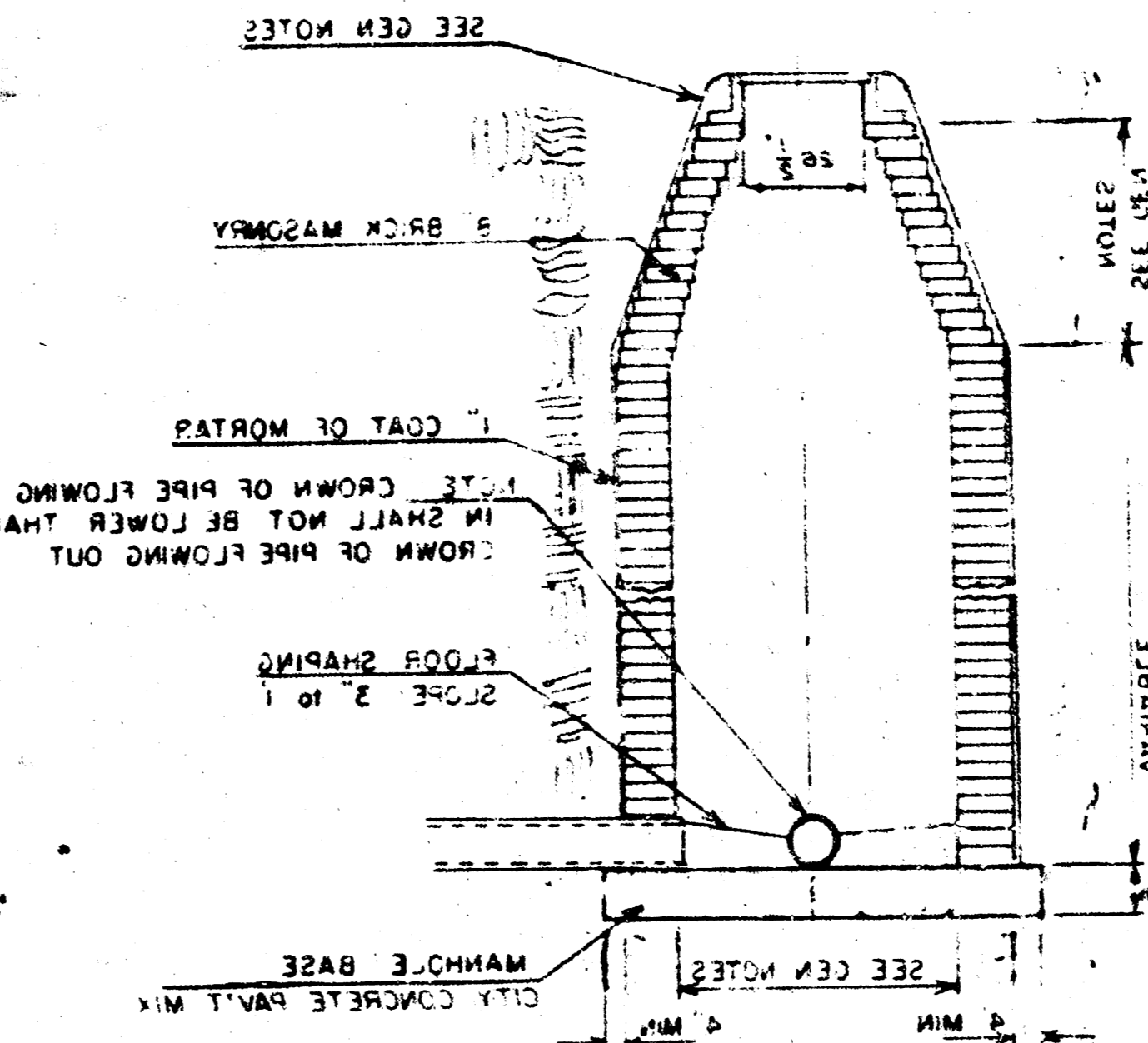
TYPE "A" OUTSIDE DROP MANHOLE



TYPE "A" INSIDE DROP MANHOLE



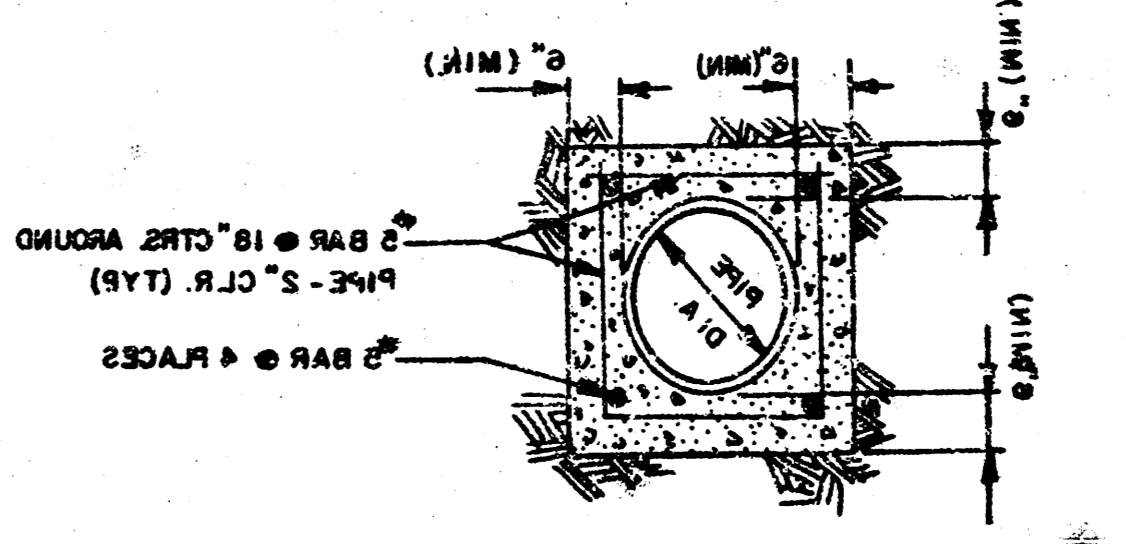
TYPE "A" MANHOLE



GROUT DETAIL OF MH-1-e

MANHOLE DROPS SHALL BE CONSTRUCTED IN ACCORDANCE WITH THE FOLLOWING NOTES:

1. THE DROPS SHALL BE CONSTRUCTED IN ACCORDANCE WITH THE STANDARD SPECIFICATIONS FOR SEWER APPURTENANCES, LATEST EDITION, AS APPLICABLE.
2. THE DROPS SHALL BE CONSTRUCTED IN ACCORDANCE WITH THE STANDARD SPECIFICATIONS FOR SEWER APPURTENANCES, LATEST EDITION, AS APPLICABLE.
3. THE DROPS SHALL BE CONSTRUCTED IN ACCORDANCE WITH THE STANDARD SPECIFICATIONS FOR SEWER APPURTENANCES, LATEST EDITION, AS APPLICABLE.
4. THE DROPS SHALL BE CONSTRUCTED IN ACCORDANCE WITH THE STANDARD SPECIFICATIONS FOR SEWER APPURTENANCES, LATEST EDITION, AS APPLICABLE.
5. THE DROPS SHALL BE CONSTRUCTED IN ACCORDANCE WITH THE STANDARD SPECIFICATIONS FOR SEWER APPURTENANCES, LATEST EDITION, AS APPLICABLE.
6. THE DROPS SHALL BE CONSTRUCTED IN ACCORDANCE WITH THE STANDARD SPECIFICATIONS FOR SEWER APPURTENANCES, LATEST EDITION, AS APPLICABLE.
7. THE DROPS SHALL BE CONSTRUCTED IN ACCORDANCE WITH THE STANDARD SPECIFICATIONS FOR SEWER APPURTENANCES, LATEST EDITION, AS APPLICABLE.
8. THE DROPS SHALL BE CONSTRUCTED IN ACCORDANCE WITH THE STANDARD SPECIFICATIONS FOR SEWER APPURTENANCES, LATEST EDITION, AS APPLICABLE.



CONCRETE ENCASMENT DETAIL

WOODSPRING

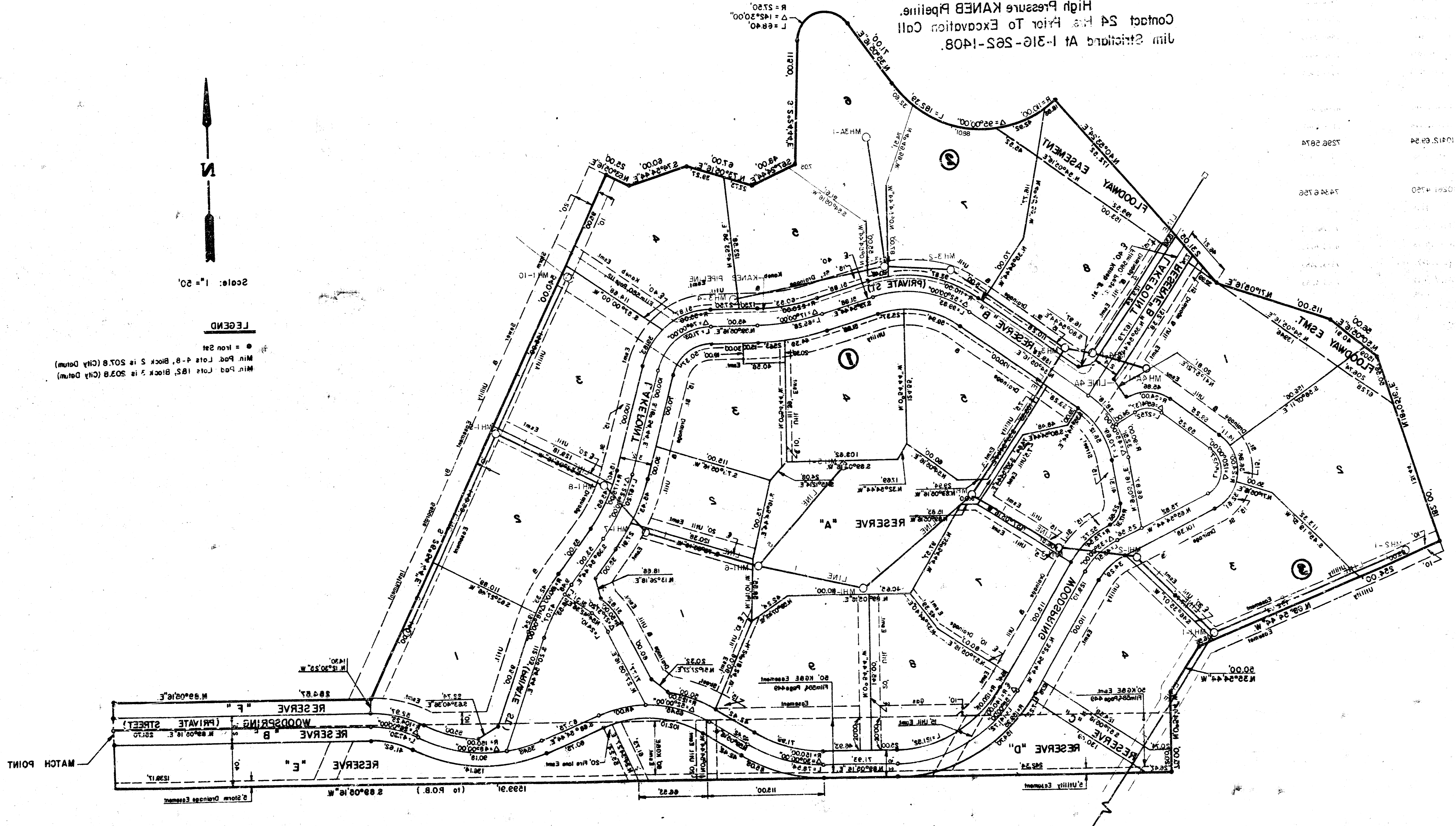
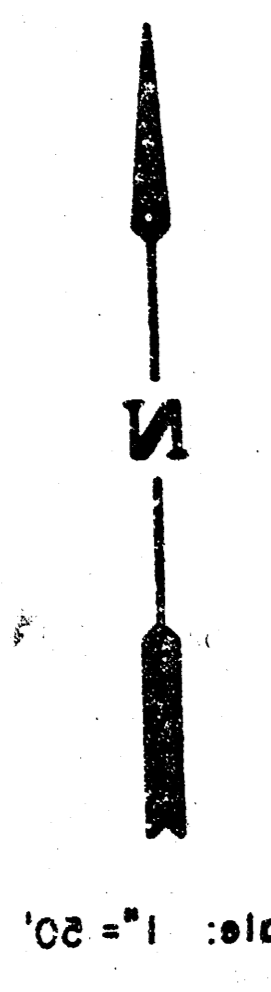
AN ADDITION TO WICHITA, SEDGWICK COUNTY, KANSAS

FINAL PLAN OF

AN ADDITION TO WICHITA, SEDGWICK COUNTY, KANSAS

CAUTION:
 High Pressure KANEB Pipeline.
 Contact 24 Hrs Prior To Excavation Call
 Jim Stichtand At 1-316-262-1408.

LEGEND
 ● = Iron Stake
 --- = 1/2" Chalk
 --- = 3/4" Chalk
 --- = 1" Chalk
 --- = 1 1/2" Chalk
 --- = 2" Chalk
 --- = 3" Chalk
 --- = 4" Chalk
 --- = 6" Chalk
 --- = 8" Chalk
 --- = 10" Chalk
 --- = 12" Chalk
 --- = 18" Chalk
 --- = 24" Chalk
 --- = 36" Chalk
 --- = 48" Chalk
 --- = 60" Chalk
 --- = 72" Chalk
 --- = 96" Chalk
 --- = 120" Chalk
 --- = 144" Chalk
 --- = 168" Chalk
 --- = 192" Chalk
 --- = 216" Chalk
 --- = 240" Chalk
 --- = 264" Chalk
 --- = 288" Chalk
 --- = 312" Chalk
 --- = 336" Chalk
 --- = 360" Chalk
 --- = 384" Chalk
 --- = 408" Chalk
 --- = 432" Chalk
 --- = 456" Chalk
 --- = 480" Chalk
 --- = 504" Chalk
 --- = 528" Chalk
 --- = 552" Chalk
 --- = 576" Chalk
 --- = 600" Chalk
 --- = 624" Chalk
 --- = 648" Chalk
 --- = 672" Chalk
 --- = 696" Chalk
 --- = 720" Chalk
 --- = 744" Chalk
 --- = 768" Chalk
 --- = 792" Chalk
 --- = 816" Chalk
 --- = 840" Chalk
 --- = 864" Chalk
 --- = 888" Chalk
 --- = 912" Chalk
 --- = 936" Chalk
 --- = 960" Chalk
 --- = 984" Chalk
 --- = 1008" Chalk
 --- = 1032" Chalk
 --- = 1056" Chalk
 --- = 1080" Chalk
 --- = 1104" Chalk
 --- = 1128" Chalk
 --- = 1152" Chalk
 --- = 1176" Chalk
 --- = 1200" Chalk



10
11

12 11 4 4 1

FILMED FROM THE BEST
 AVAILABLE COPY