

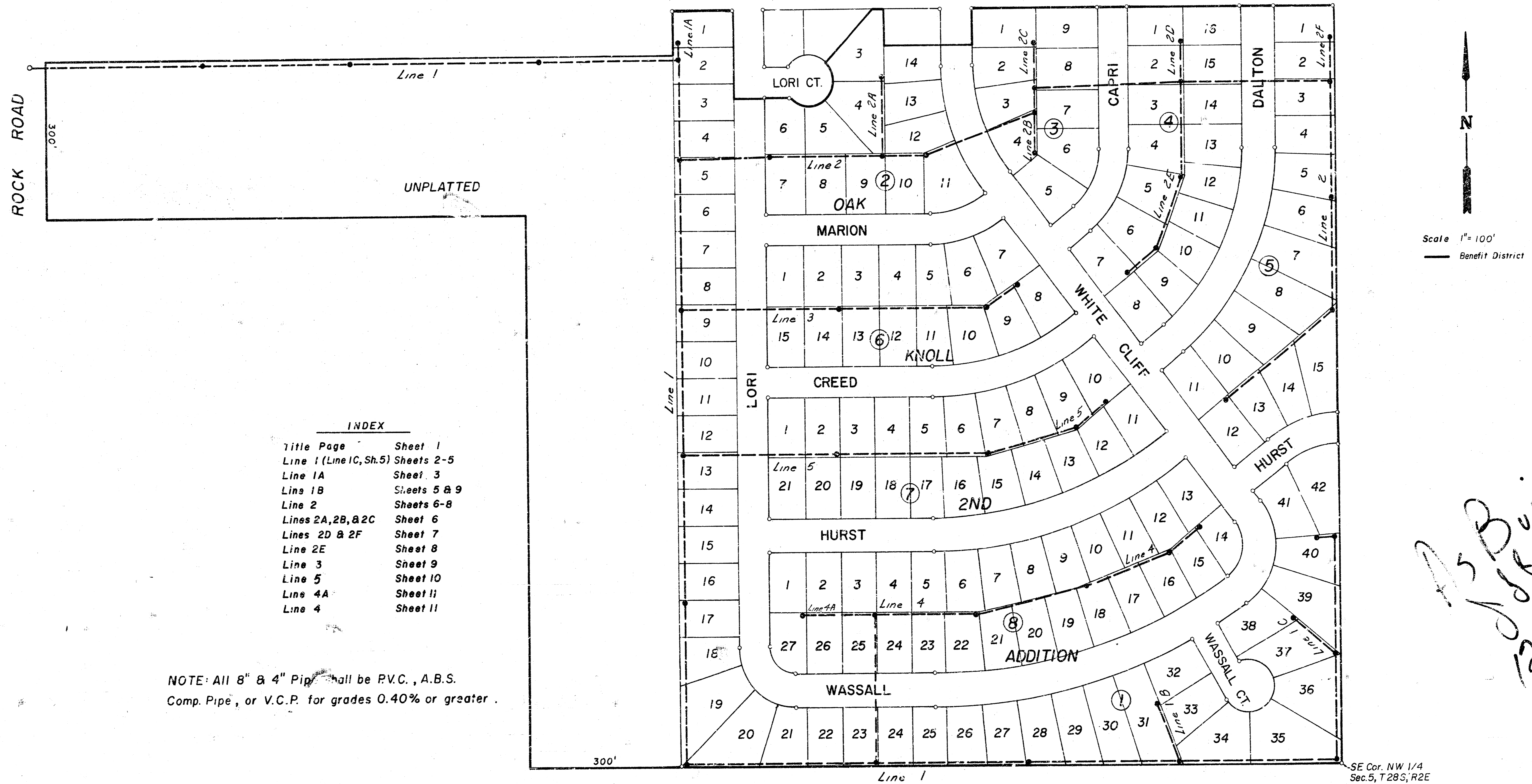
LATERAL 1, MAIN 23, WAR INDUSTRIES SEWER

City of Wichita, Kansas

R. W. BRUGGEMAN: DIRECTOR OF ENGINEERING / CITY ENGINEER

DATE :

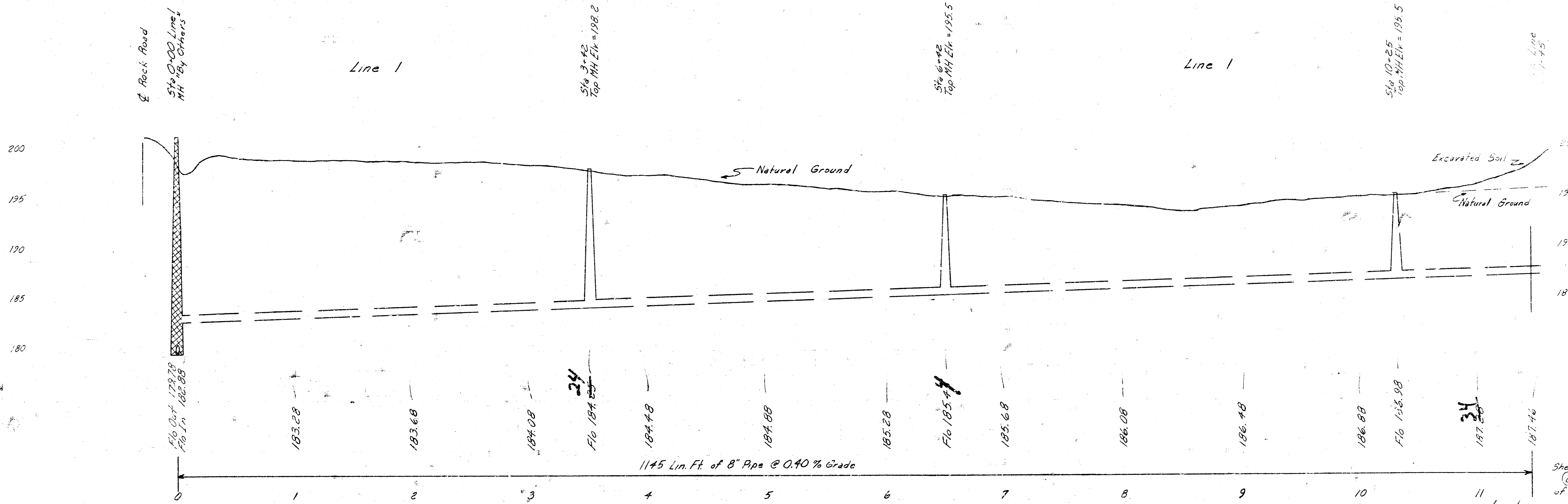
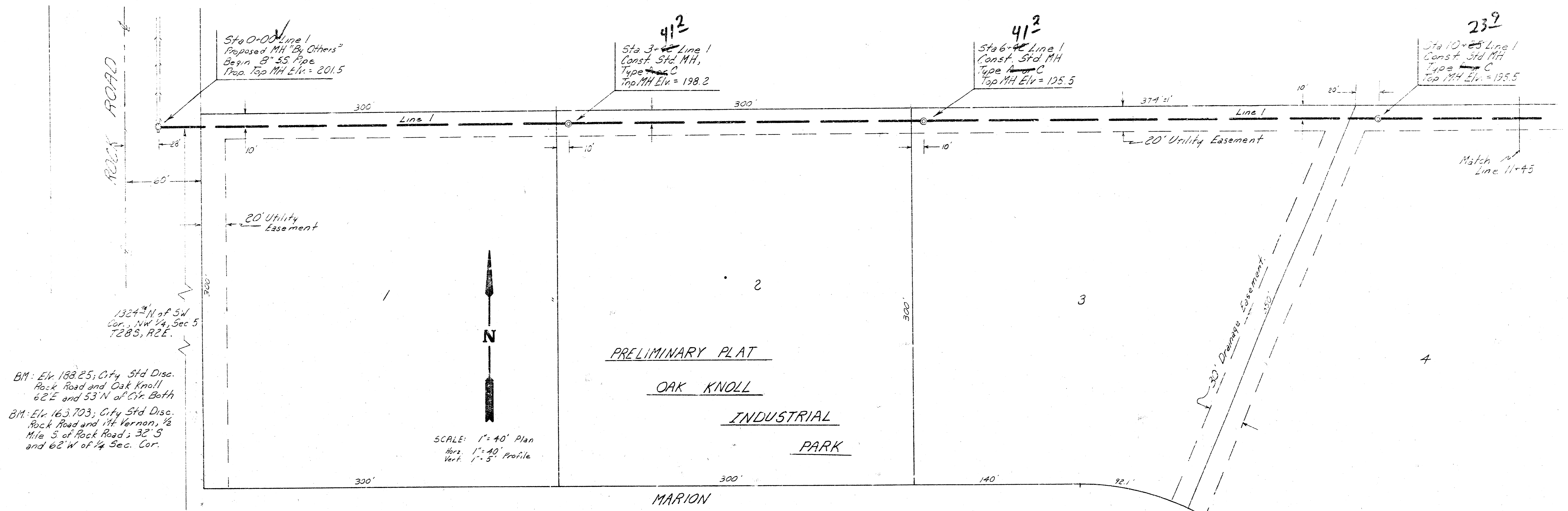
PROJECT NO. 468-76-245-80999-000-000-001

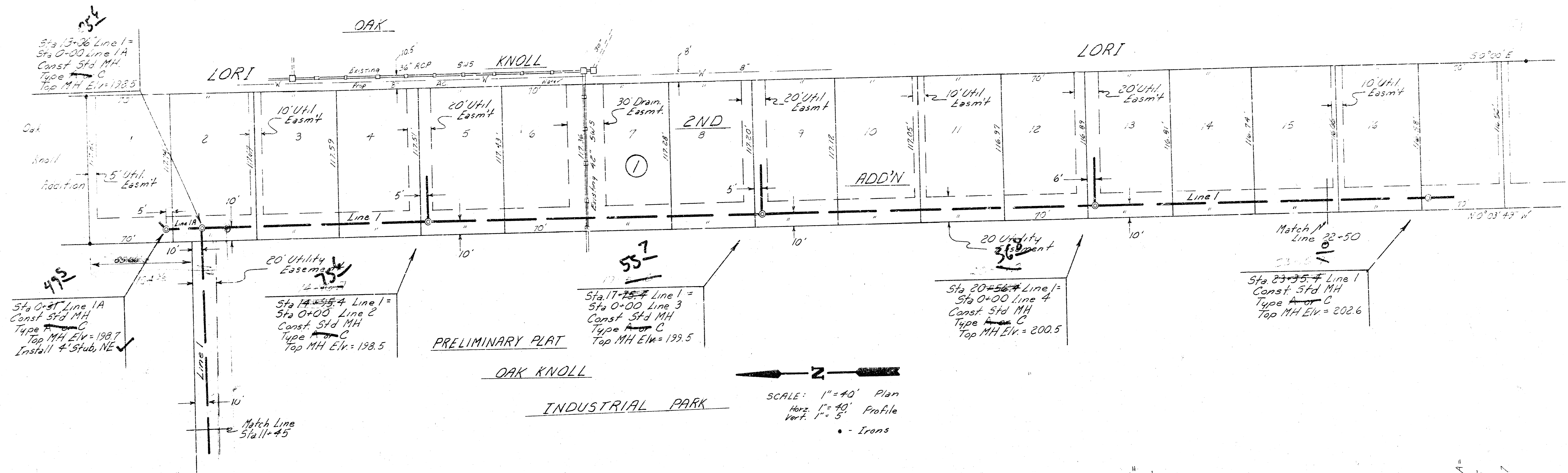


INDEX	
Title Page	Sheet 1
Line 1 (Line 1C, Sh. 5)	Sheets 2-5
Line 1A	Sheet 3
Line 1B	Sheets 5 & 9
Line 2	Sheets 6-8
Lines 2A, 2B, & 2C	Sheet 6
Lines 2D & 2F	Sheet 7
Line 2E	Sheet 8
Line 3	Sheet 9
Line 5	Sheet 10
Line 4A	Sheet 11
Line 4	Sheet 11

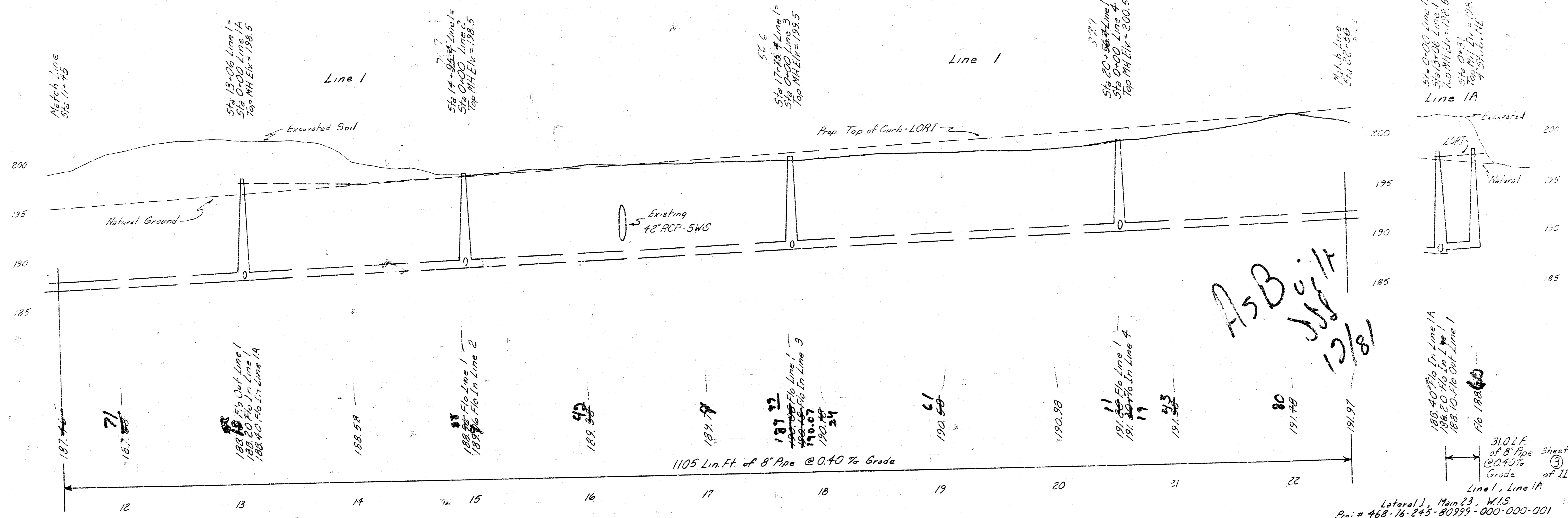
NOTE: All 8" & 4" Pipe shall be P.V.C., A.B.S. Comp. Pipe, or V.C.P. for grades 0.40% or greater.

AS B with
12/81

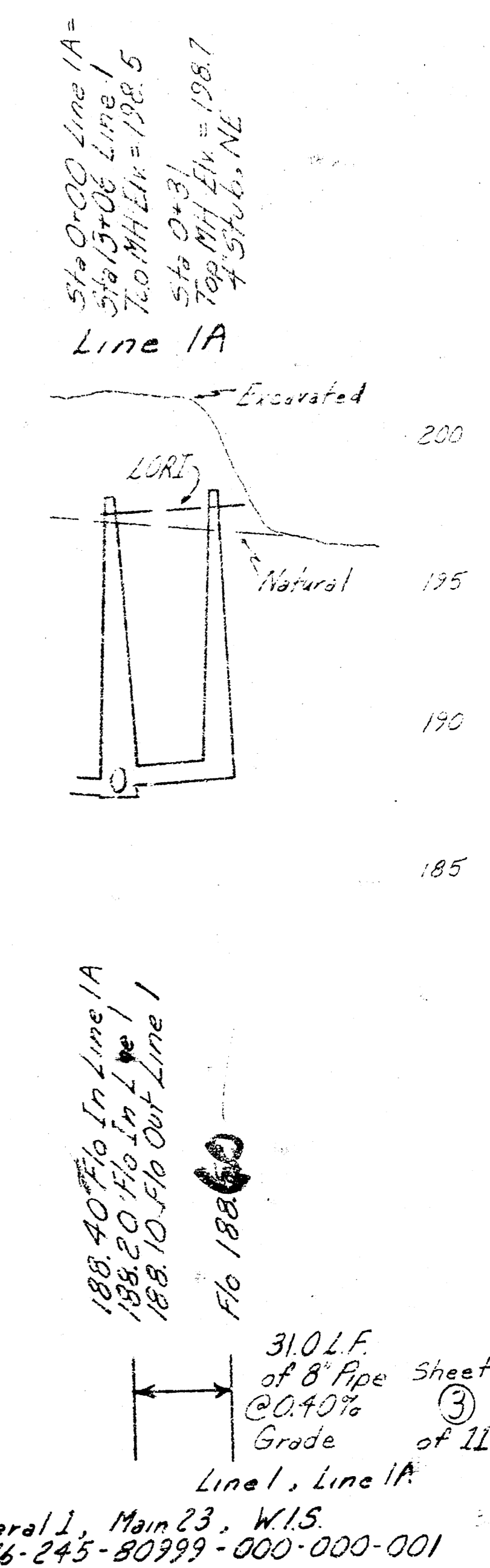


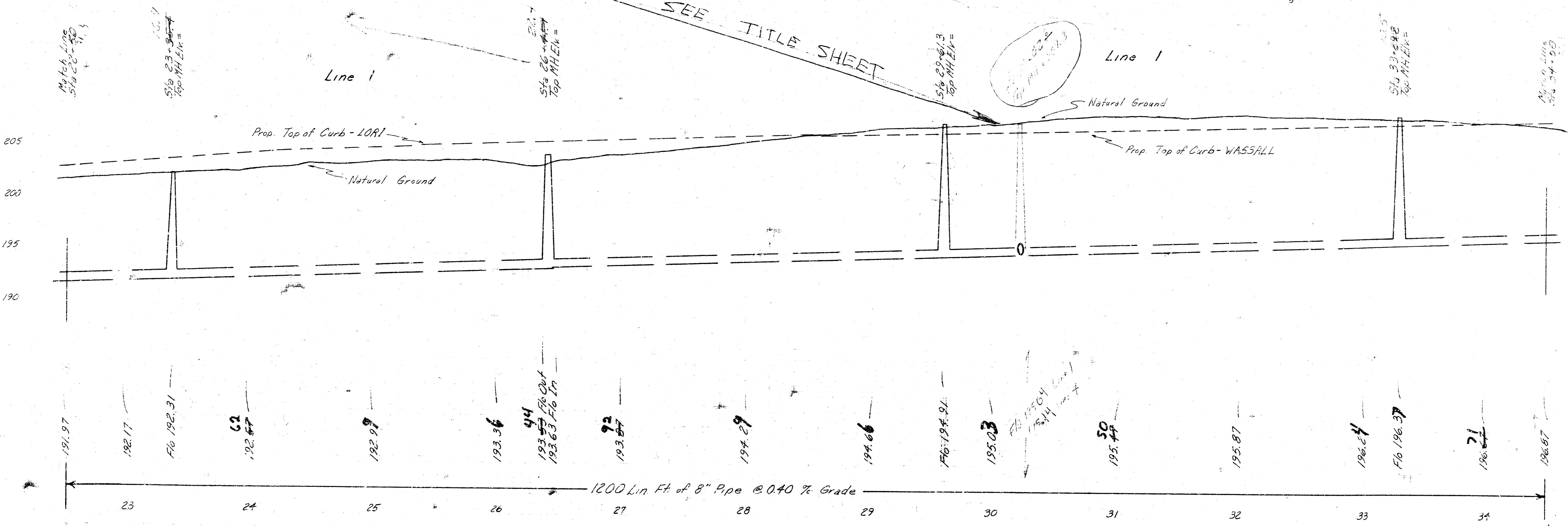
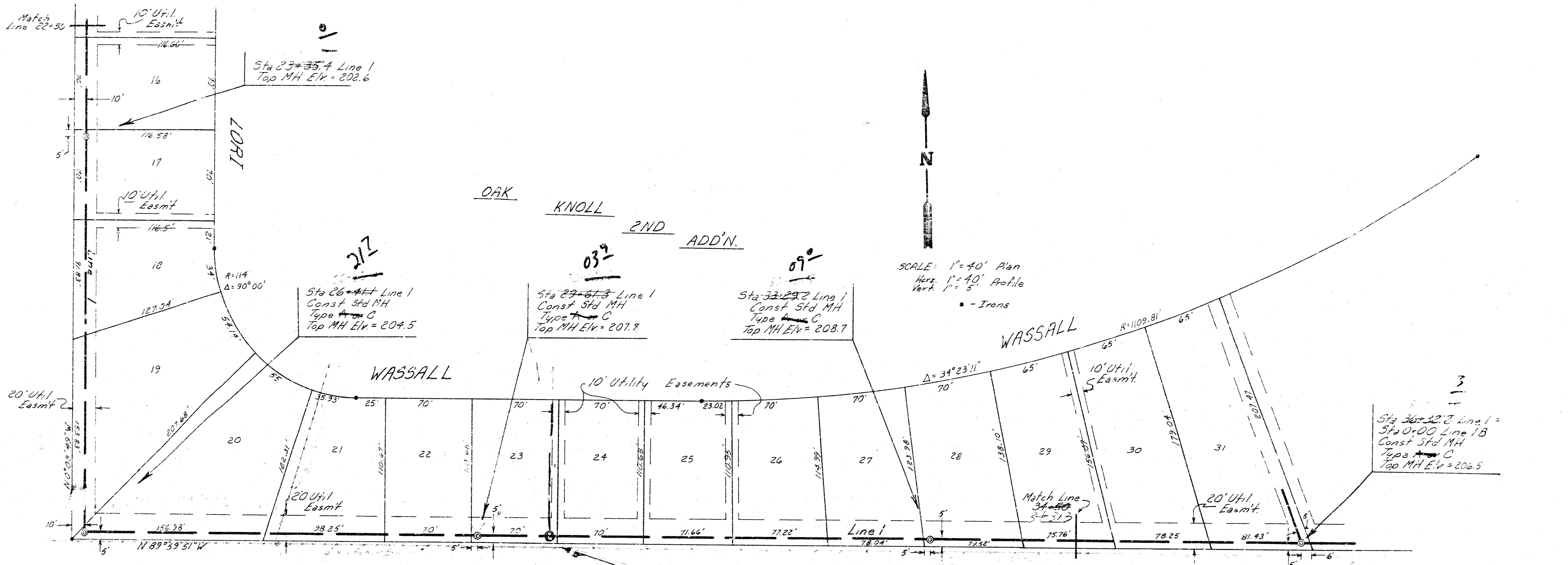


SCALE: 1" = 40' Plan
 Horiz. 1" = 40' Profile
 Vert. 1" = 5' Profile
 - - - - - Irons

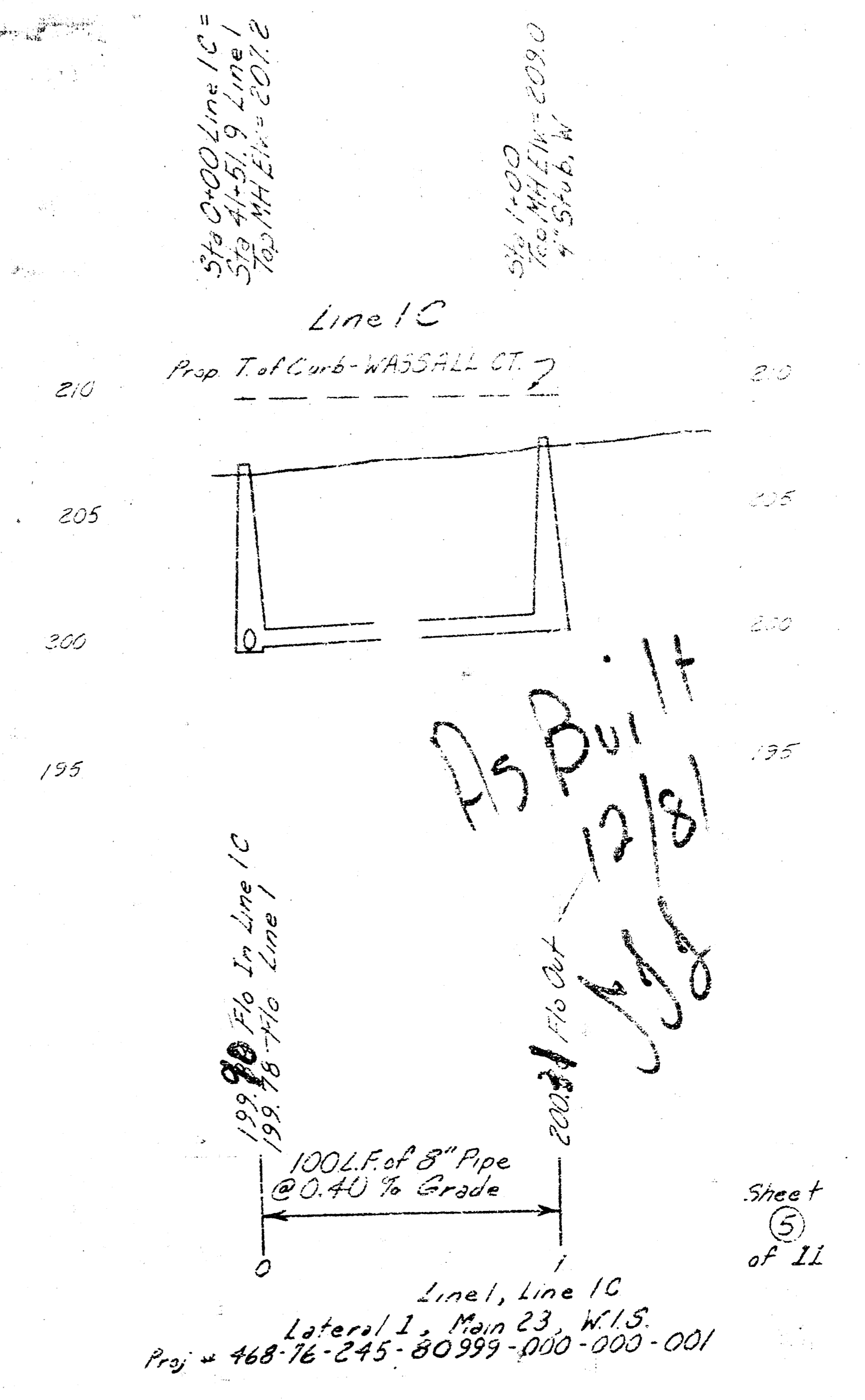
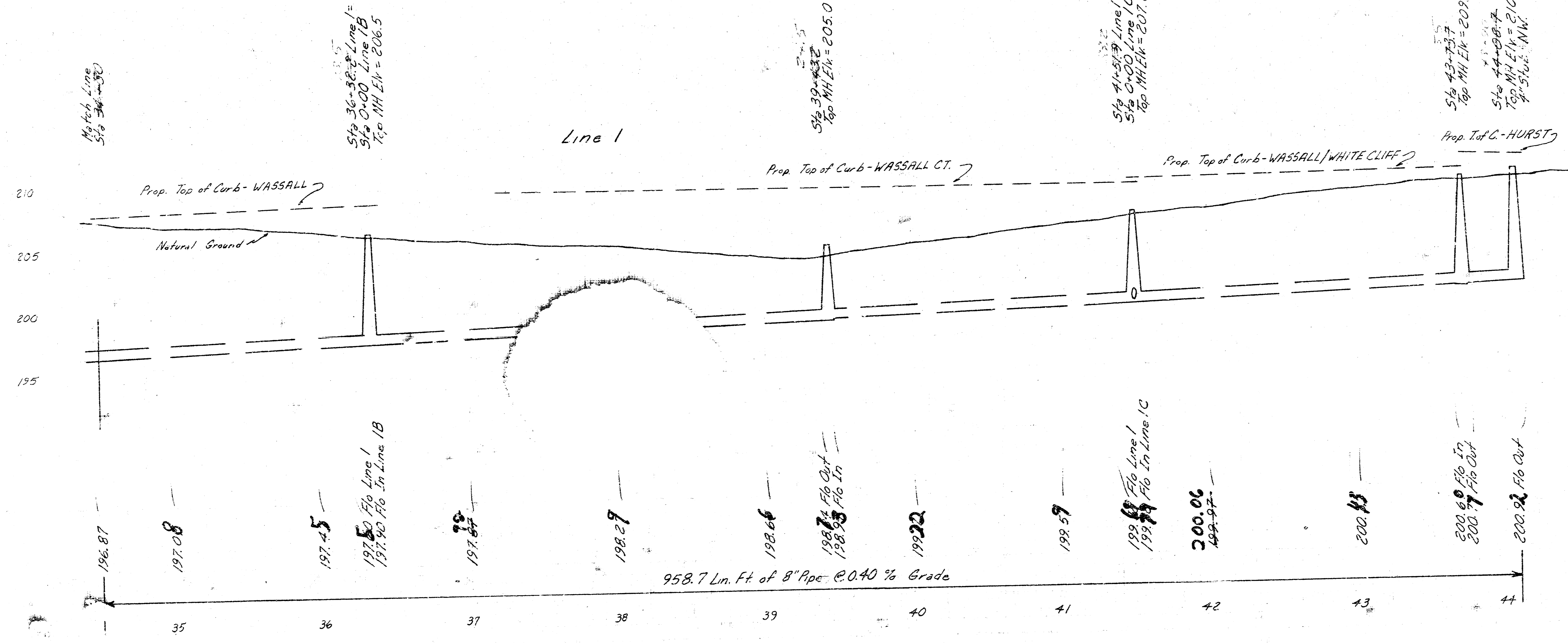
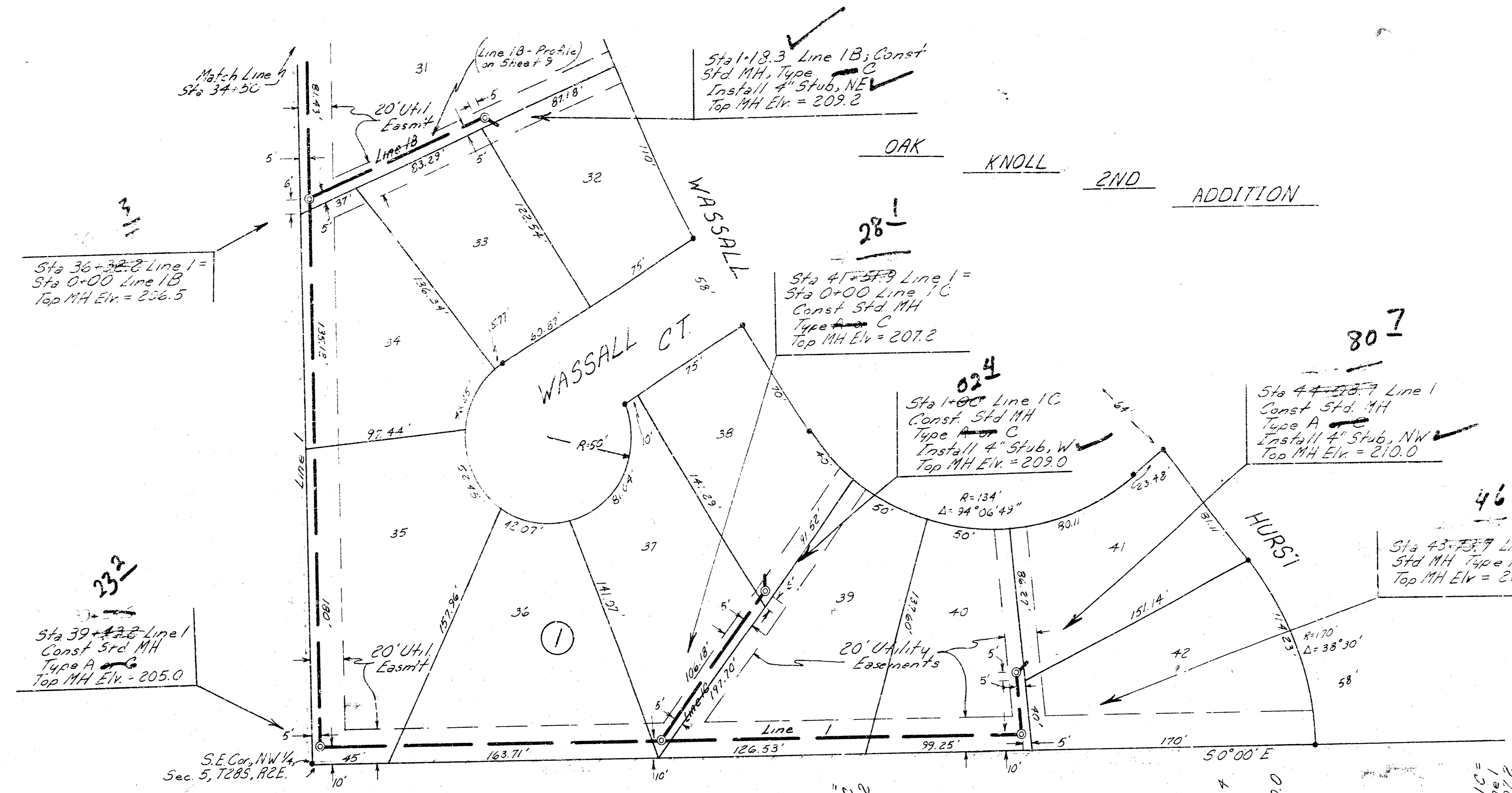


As Bldg
12/81





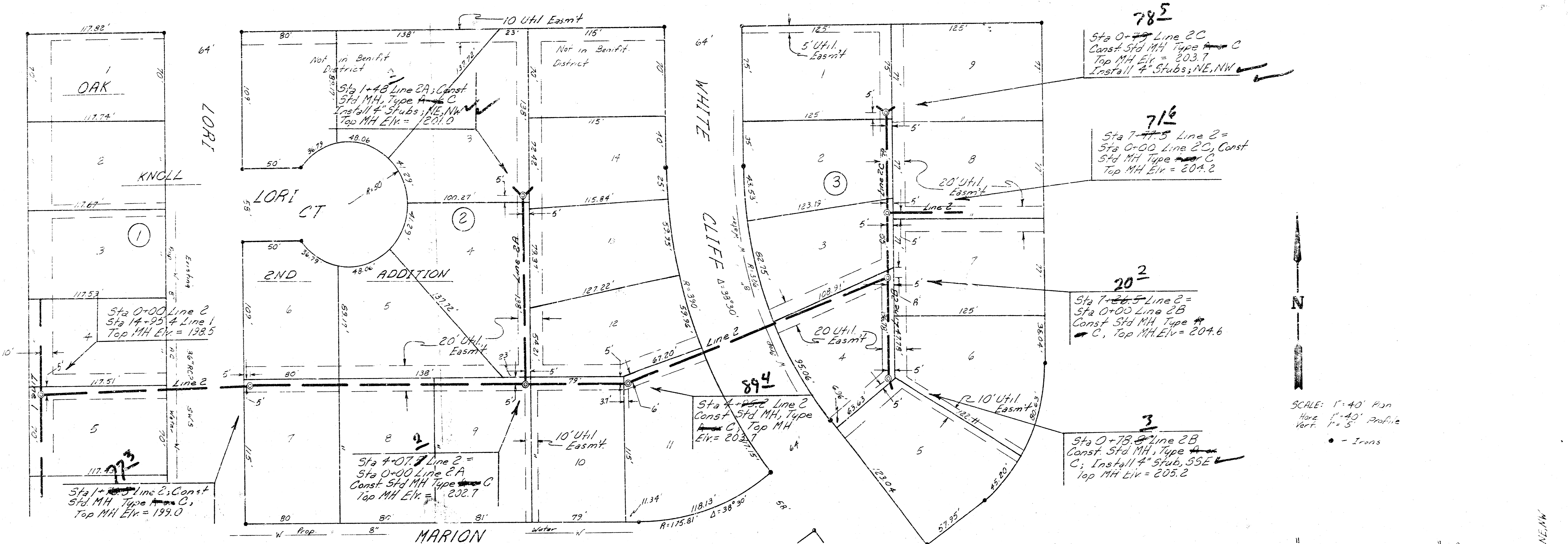
SCALE: 1" = 40' Plan
 Horiz. 1" = 40' Profile
 Vert. 1" = 5' Profile
 • - Irons



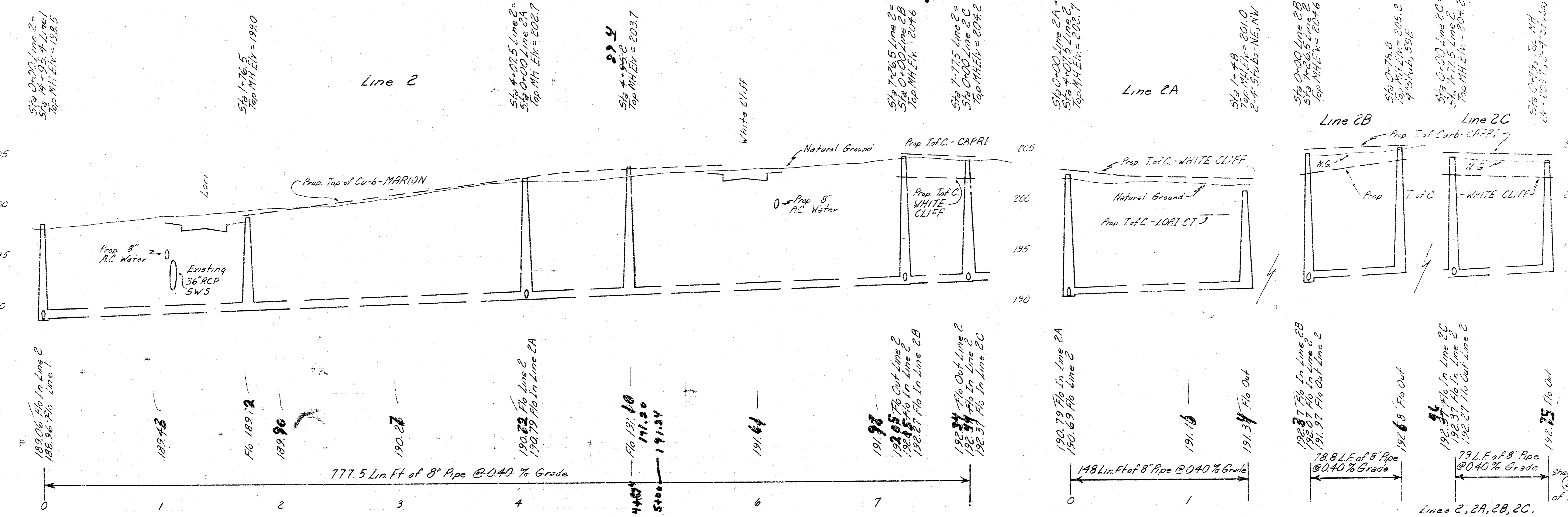
*As Built
 12/81
 JSS*

Sheet 5 of 11
 Proj. 468-76-245-80999-000-000-001

FILMED FROM THE BEST AVAILABLE COPY.....

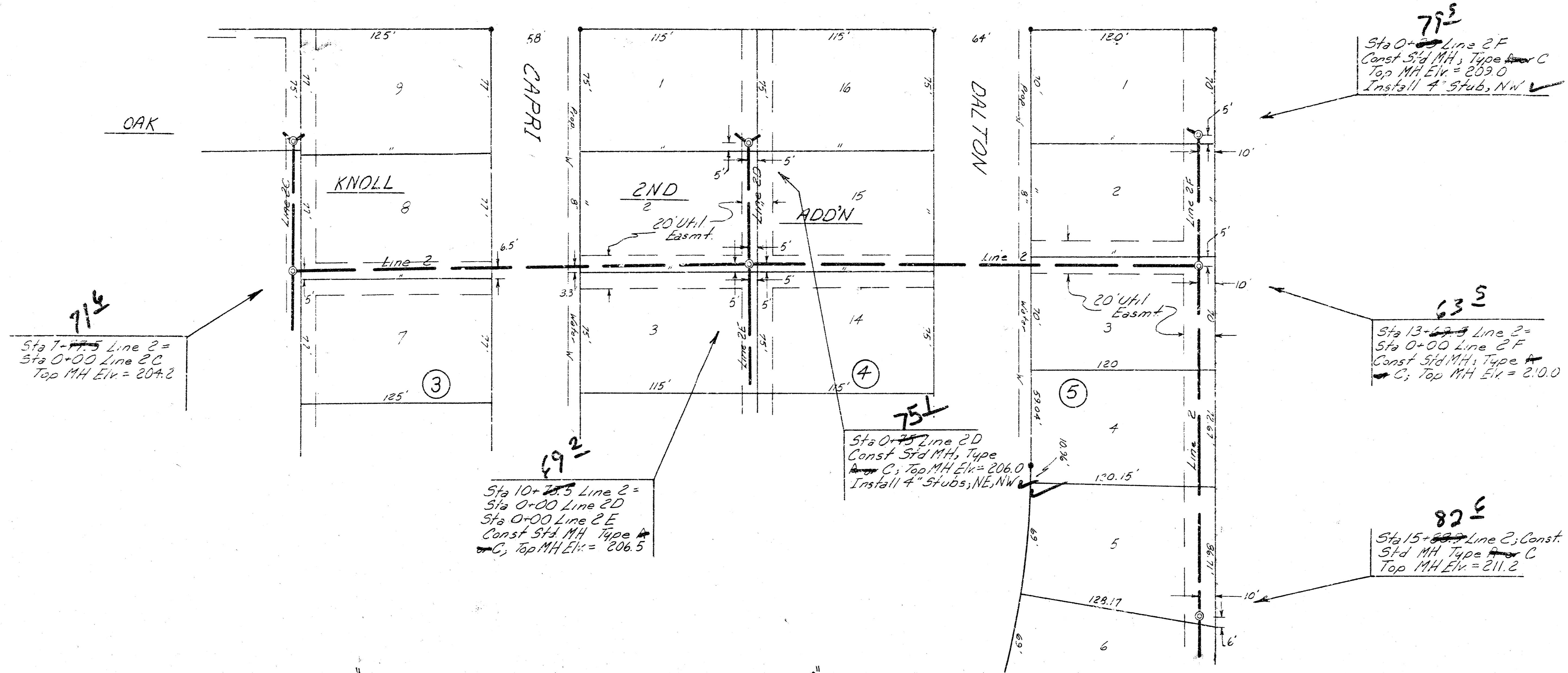


SCALE: 1"=40' Plan
 1"=40' Profile
 Vert. 1"=5'



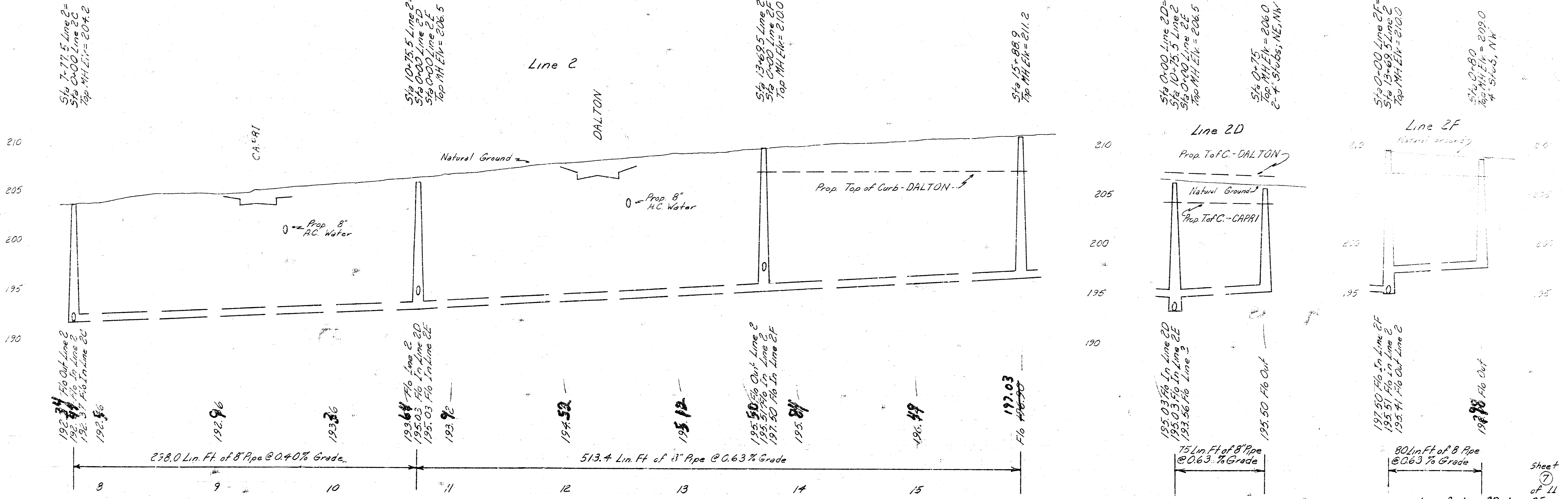
Lines 2, 2A, 2B, 2C.
 Lateral 1, Main 23, W15.
 Proj # 468-76-2+5-000-000-001

FILMED FROM THE BEST AVAILABLE COPY.....



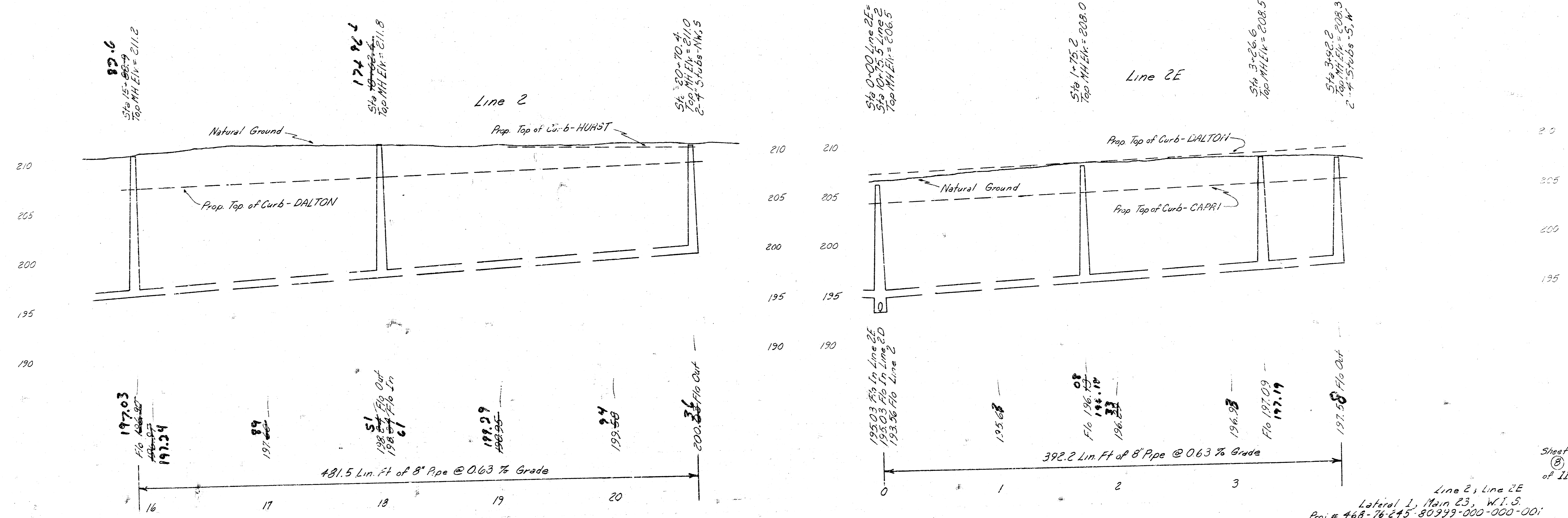
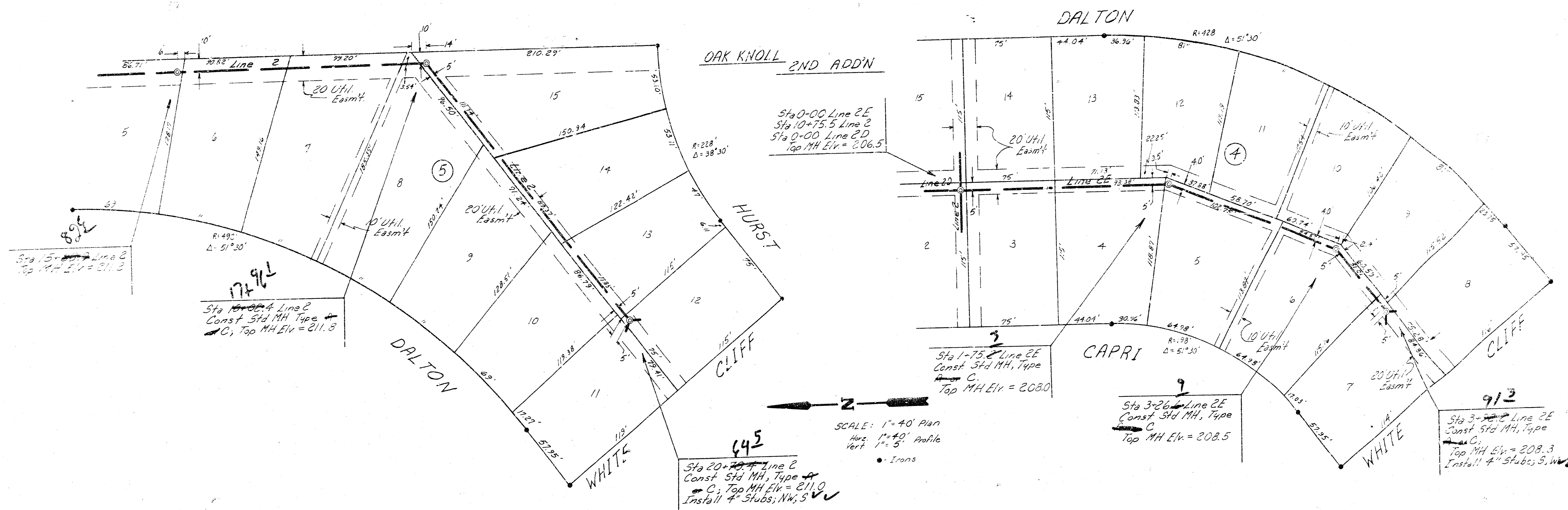
As Built
12/15/11

SCALE: 1" = 40' Plan
 1/4" = 40' Profile
 1/8" = 5' Vert



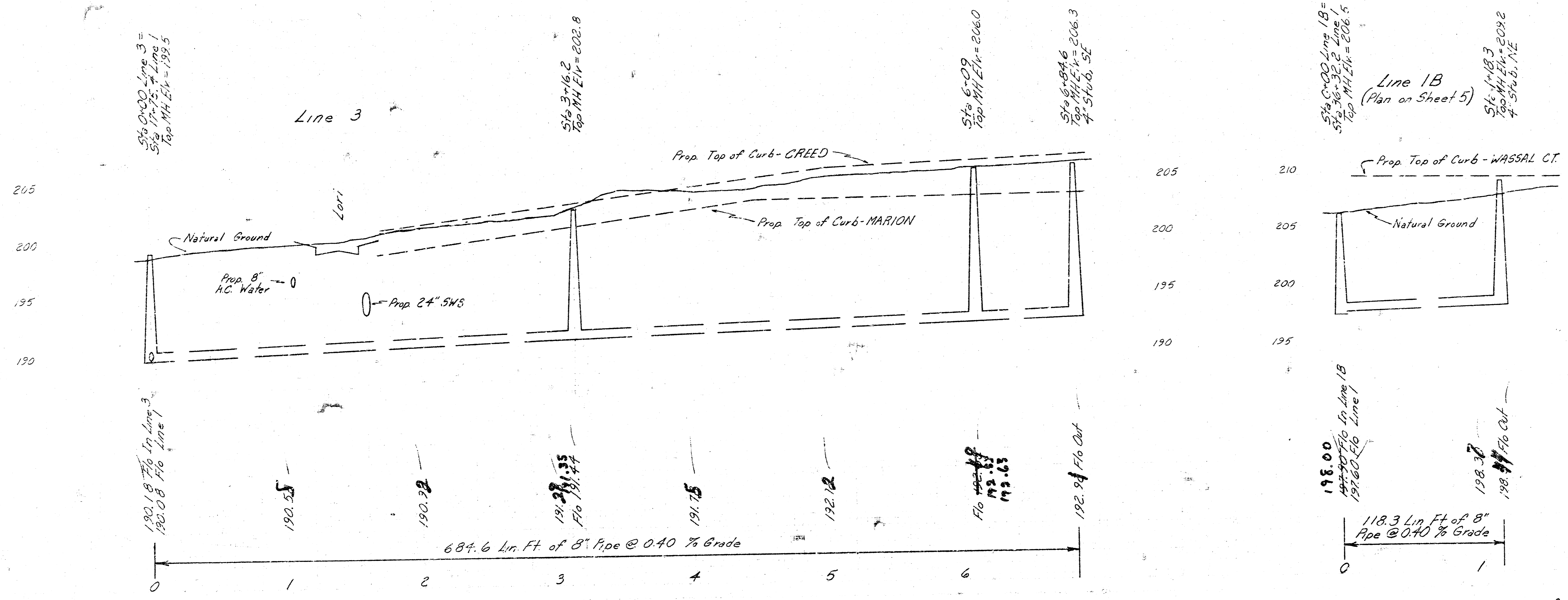
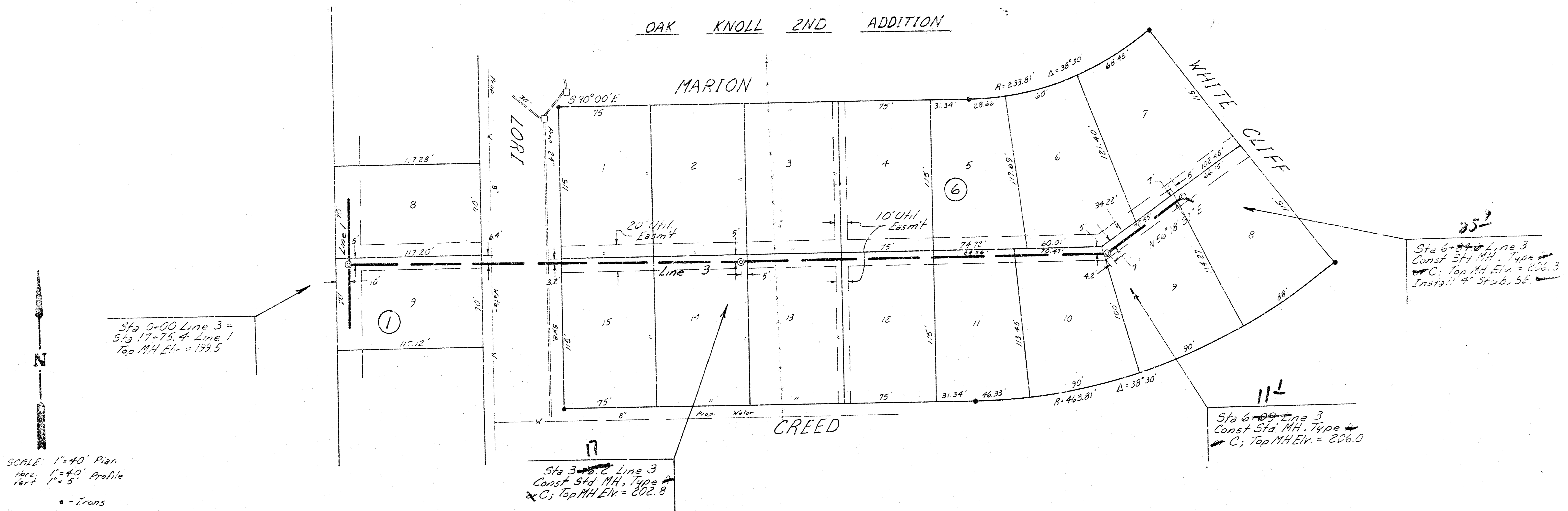
Sheet 7 of 11
 Line 2, Lins 2D, Line 2F
 Lateral 1, Main 23, W15
 Proj # 468-76-245-80999-000-000-00

FILMED FROM THE BEST AVAILABLE COPY.....



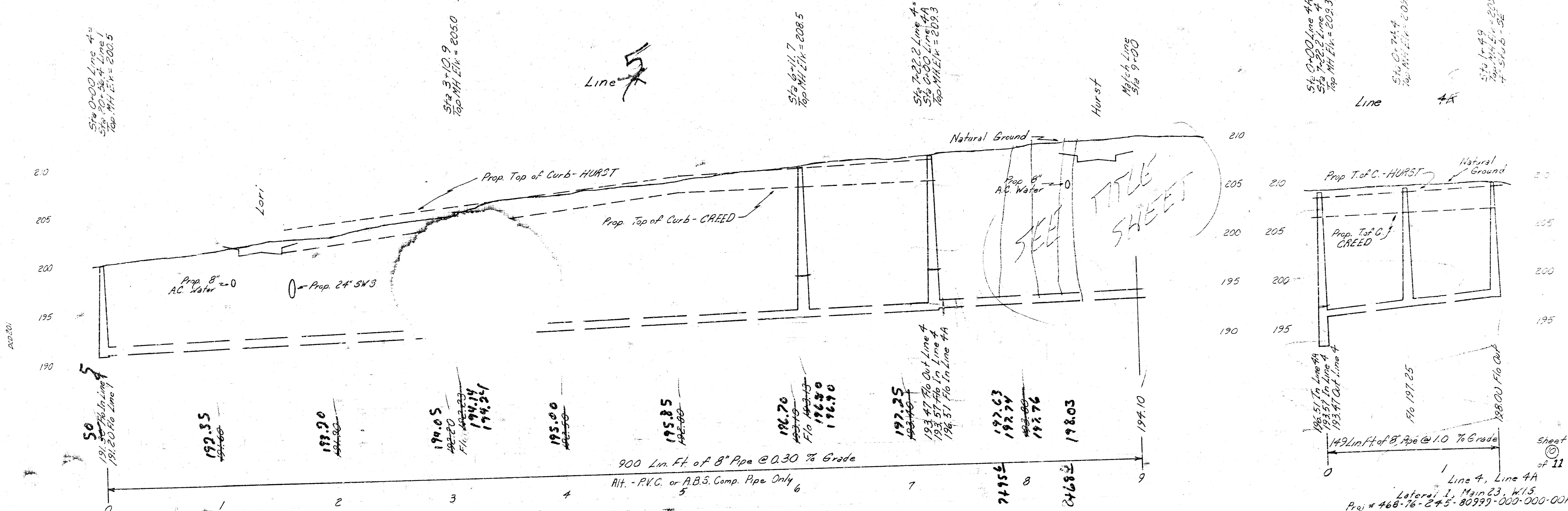
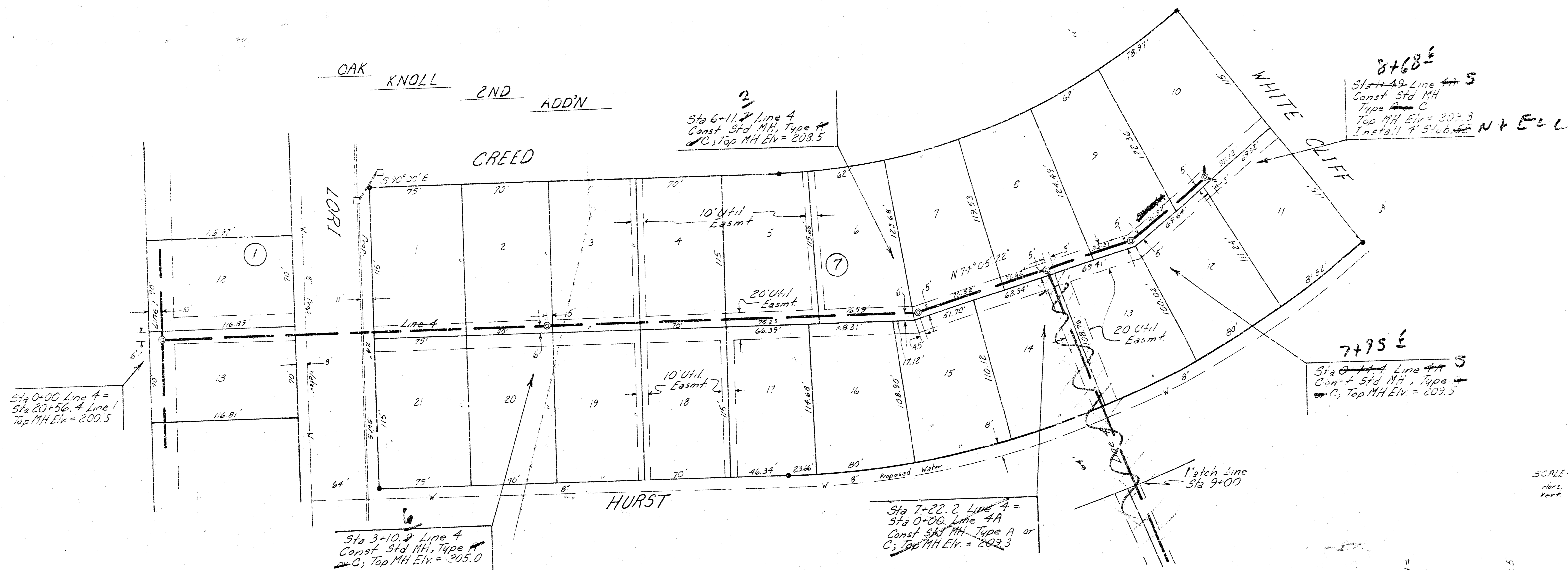
FILMED FROM THE BEST AVAILABLE COPY

OAK KNOLL 2ND ADDITION



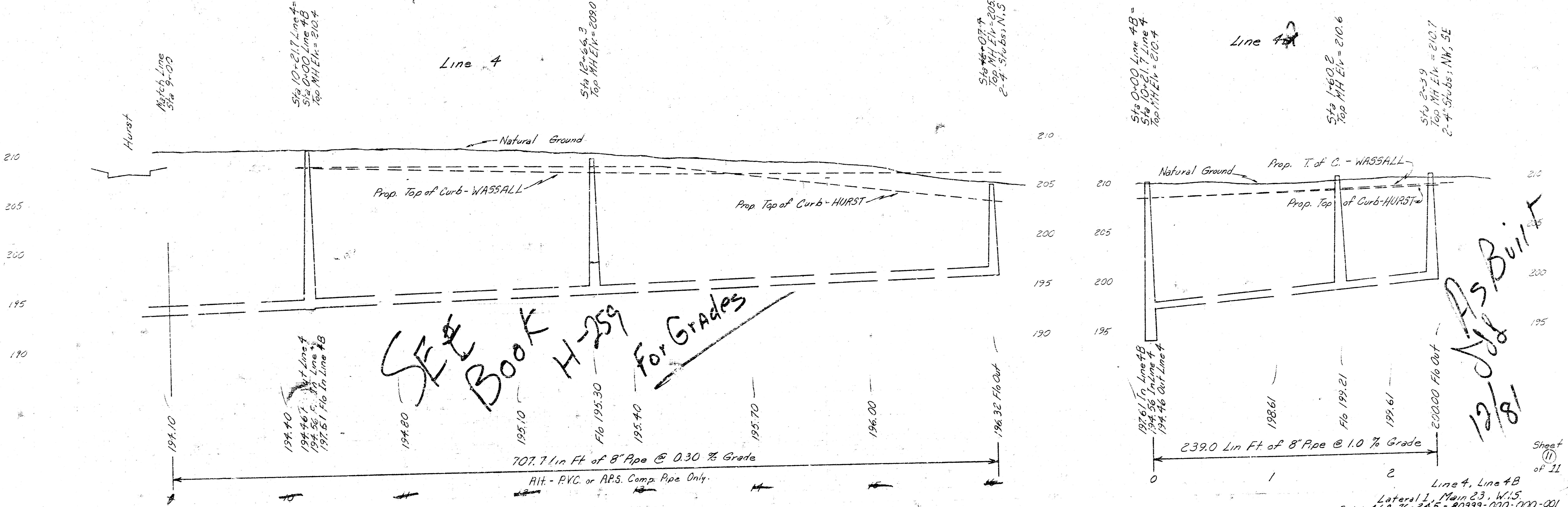
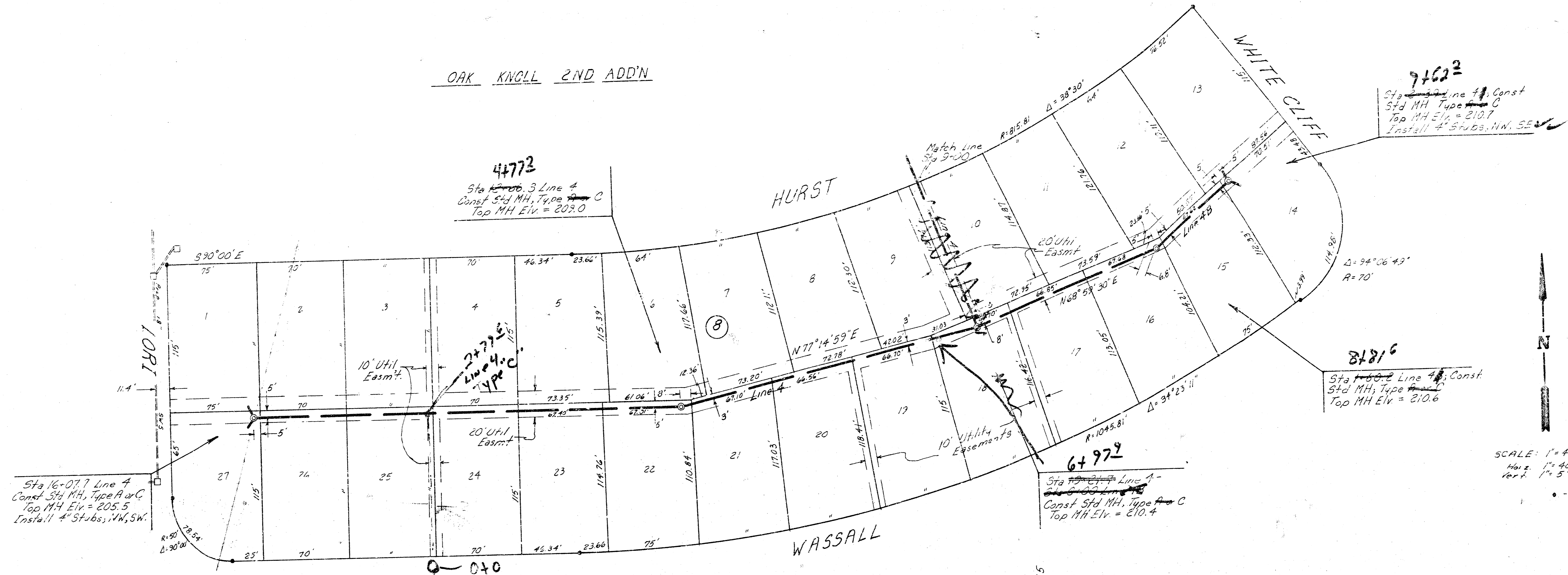
As Built
 12/81

FILMED FROM THE BEST AVAILABLE COPY.....



FILMED FROM THE BEST AVAILABLE COPY

OAK KNOLL 2ND ADD'N



Line 4, Line 4B
 Lateral 1, Main 23, W.15.
 Proj # 468-76-245-80999-000-000-001