

LATERAL 13, MAIN 1, COWSKIN INTERCEPTOR SEWER

PROJ. NO. 468-82237

INDEX NO. 741306

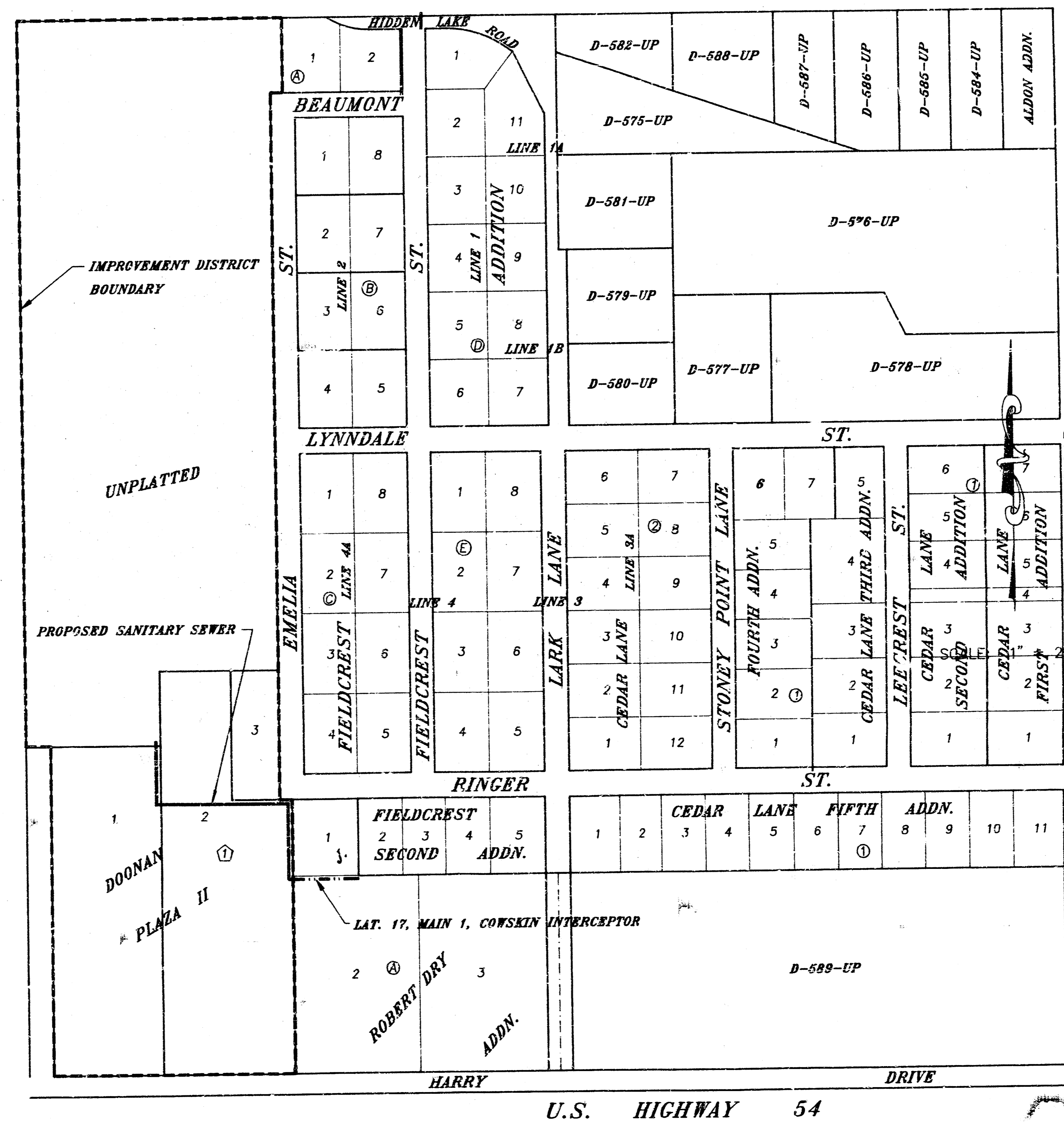
CITY OF WICHITA, KANSAS
M. E. LINDEBAK - CITY ENGINEER

GENERAL NOTES:

1. ALL CONSTRUCTION AND MATERIAL TO COMPLY WITH CITY OF WICHITA SPECIFICATIONS AND STANDARDS.
2. THE CONTRACTOR SHALL NOTIFY THE UTILITY SERVICE COMPANIES TO FLAG THEIR UNDERGROUND LINES AND REQUEST ANY OVERHEAD POLE/LINE ADJUSTMENTS 48 HOURS PRIOR TO CONSTRUCTION.
KANSAS ONE-CALL 1-800-344-7233
3. THE UNDERGROUND UTILITY SERVICE LINES AND OVERHEAD UTILITY POLE LINES ARE TO BE ADJUSTED AS NECESSARY BY OTHERS PRIOR TO CONSTRUCTION UNLESS THE PLANS SPECIFICALLY CALL FOR THEIR ADJUSTMENT BY THE CONTRACTOR. EXISTING UTILITIES AND THEIR LOCATION, AS SHOWN ON THE PLANS, REPRESENT THE BEST INFORMATION OBTAINABLE FOR DESIGN. LOCATION INFORMATION HAS BEEN OBTAINED FROM THE VARIOUS UTILITY COMPANIES AND IS EITHER FROM COMPANY RECORD DRAWINGS OR COMPANY PROVIDED FIELD LOCATIONS. THE CONTRACTOR WILL BE REQUIRED TO WORK AROUND EXISTING UTILITIES WITHIN THE RIGHT-OF-WAY WHICH DO NOT CONFLICT WITH PROPOSED CONSTRUCTION.
4. THE CONTRACTOR SHALL GIVE ALL PROPERTY OWNERS AND/OR TENANTS DIRECTLY AFFECTED BY THE CONSTRUCTION OF THIS PROJECT A MINIMUM OF FIVE (5) DAYS ADVANCE WRITTEN NOTICE PRIOR TO START OF CONSTRUCTION.
5. ANY TREE OR SHRUB REMOVAL OUTSIDE OF EASEMENTS MUST BE APPROVED BY THE FIELD ENGINEER.
6. THE CONTRACTOR SHOULD EXAMINE THE CONSTRUCTION SITE PRIOR TO BIDDING AND BE SATISFIED AS TO THE WORK SHOWN FOR COMPLETION.

INDEX OF SHEETS

SHEET 1 -- TITLE SHEET
SHEET 2 -- PLAN/PROFILE

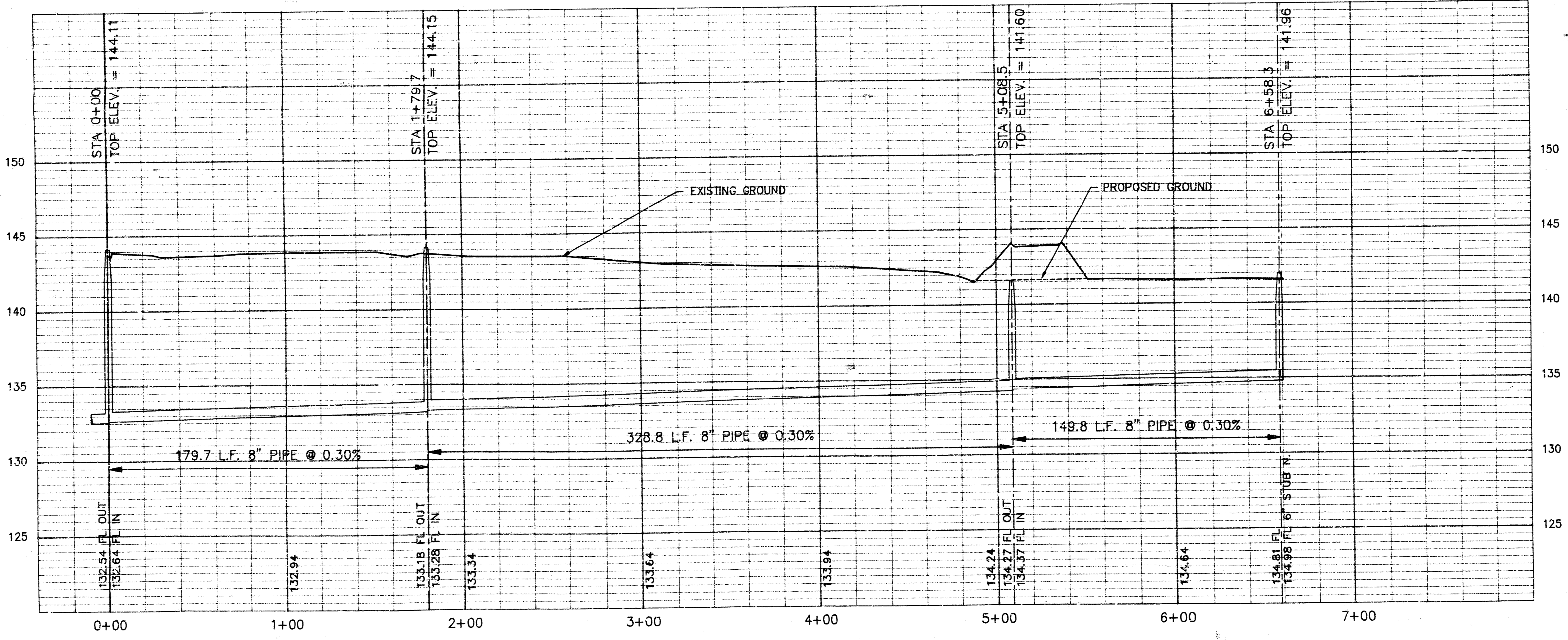
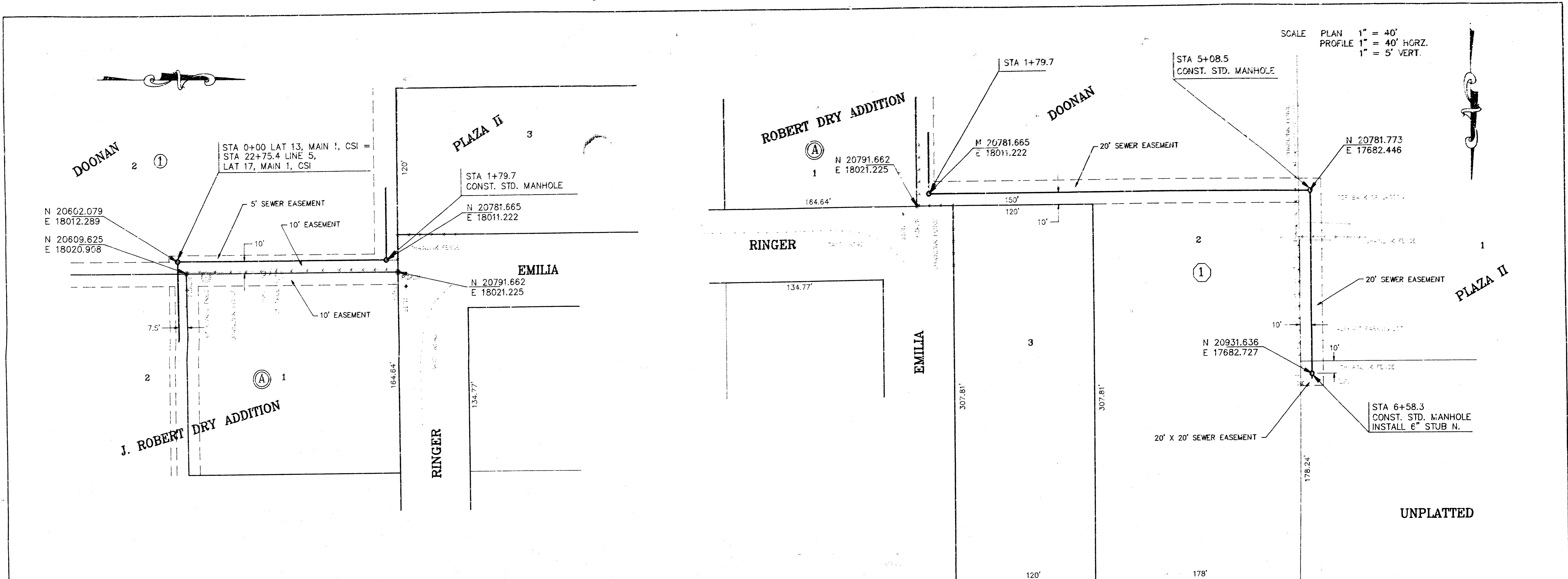


BENCH MARKS

- 131.56 City Std. Disc on concrete railing at NE. corner bridge over Calfskin Creek on Maize Rd. just S. of Hidden Valley Road.
- 135.59 "X" Cut on curb, west side Maize Rd., N. end of north radius at Lynn Dale.
- 137.96 "X" Cut on curb, west end radius at NW. corner of Maize Rd. and Ringer.
- 139.61 NE. corner concrete porch on N. side house (on Lynn Dale) at 1335 Stony Point.
- 146.32 NW. corner concrete step on north side of house at 1350 Fieldcrest.
- 140.04 R.R. spike in E. face Light Pole at SE. corner of Emelia and Lynn Dale.
- 139.49 SW. corner concrete porch on front of house at 1226 Fieldcrest.
- 134.97 "X" Cut on SW. corner concrete drive at 1226 Fieldcrest.
- 144.99 R.R. spike in N. face Light Pole at NE. corner of Ringer and Stony Point.
- 144.86 "X" Cut NW. corner concrete drive (on Lark) at 10705 Ringer.



Booked 12-1-94
OKB
As Per Plan



LAT. 13, MAIN 1, COWSKIN INTERCEPTOR
 PROJ. NO. 468-82237
 SHEET 2 OF 2

5-4-1-01