

Lat. 7, Main 2, C.I.S.  
**SANITARY SEWER IMPROVEMENTS**  
 to serve  
**AUBURN HILLS 11TH ADDITION**

CITY OF WICHITA, KANSAS

Michael E. Lindebak, P.E. City Engineer

Project Number

**468-83296**

O.C.A. Number

**743879**

**Sheet Index**

Title Sheet	1
Lines 1, 1A, & 2	2
Standard Manhole Detail	3
Special Shallow Manhole Detail	4
Ring & Cover Detail	5
BMP Detail Sheet	6
Copy of Plat	7

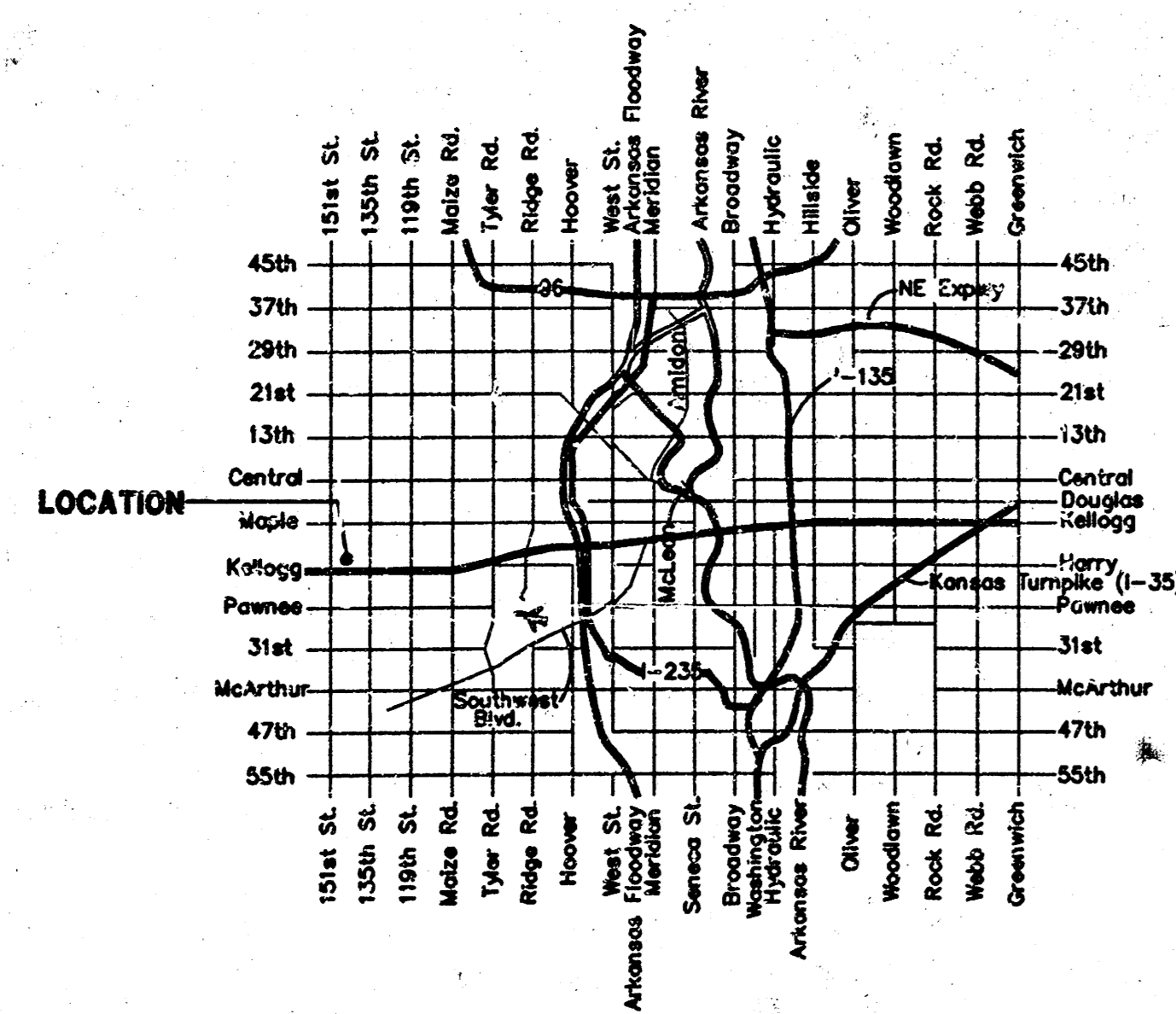
**Benchmarks**

R.R. Spike in H. Side of Power Pole  
 780' E. of C 151st. W. & 60' N.  
 of Section Line on Kellogg.  
 Elev. = 202.07 (City Datum)

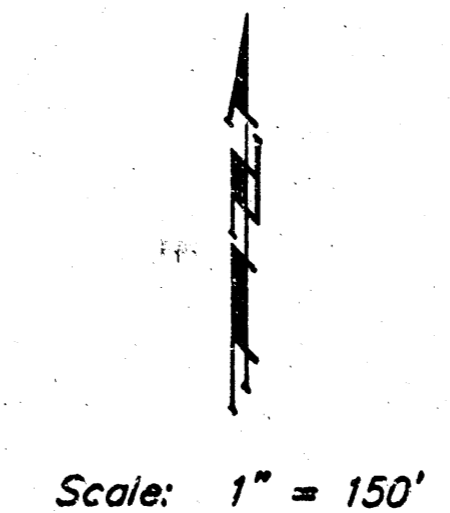
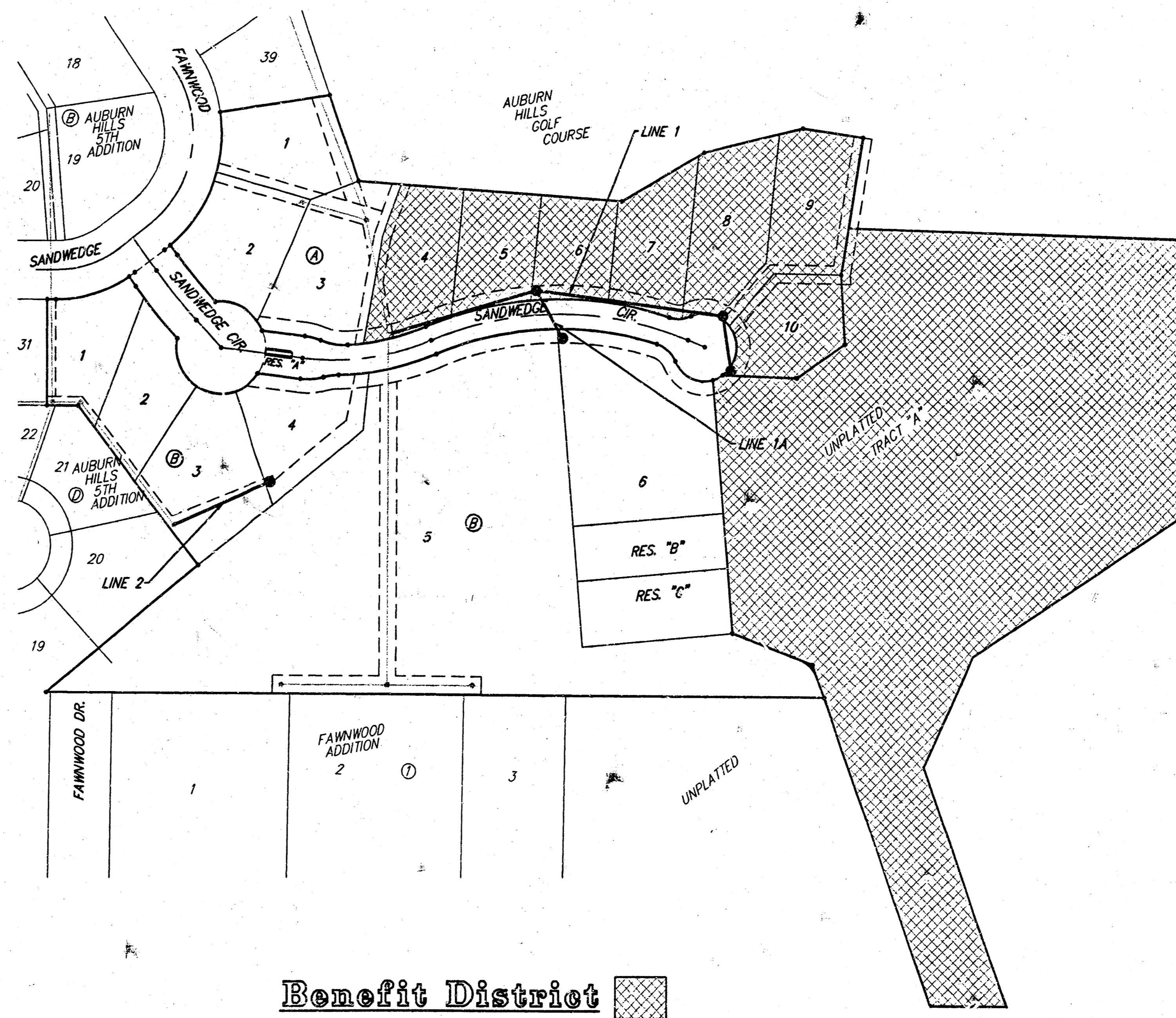
R.R. Spike in Power Pole 493' N. &  
 30' E. of Section Corner @ 151st. W.  
 & Kellogg, adjacent to S.S. Lift Station.  
 Elev. = 207.28 (City Datum)

Top of 1" iron 12" Deep, W1/4 Cor.,  
 Sec. 26, Twp. 27-S, R-2-W.  
 Elev. = 209.13 (City Datum)

□ cut on Top of Curb Adjacent to  
 Common Lot Line of Lots 15 & 17,  
 Block B, Auburn Hills 5th Addition  
 Elev. = 202.65 (City Datum)



**Vicinity Map**



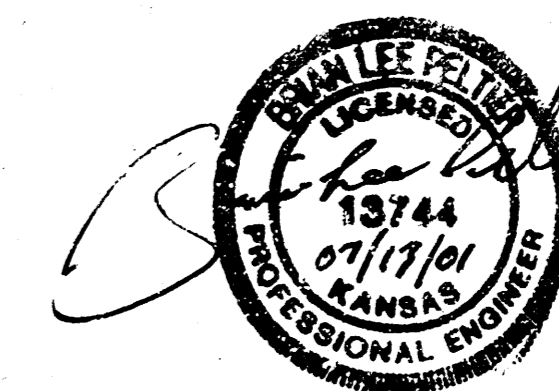
**GENERAL NOTES:**

- Contractor will be required to provide notice to utility companies a minimum of twenty-four (24) hours prior to any excavation, as follows:  

Kansas One-Call	687-2470
-----------------	----------

The Contractor must notify the following in case of an emergency:

Cox Communications	262-0661
K.G.E.	383-8600
Kansas Gas Service	383-8600
Peoples Gas Company	1-800-303-0752
Southwestern Bell Telephone Company	1-800-344-7233
City of Wichita Water Dept.	268-4908
City of Wichita Traffic Engineering	269-4446
- Underground utility service lines and overhead utility pole lines are to be adjusted as necessary by others prior to construction unless the plans specifically call for their adjustment by the Contractor or unless the plans specifically identify a utility to be adjusted by its owner during construction. Existing utilities and their location, as shown on the plans, represent the best information obtainable for design. The Contractor will be required to work around existing utilities within the right-of-way which do not conflict with proposed construction.
- Trees and shrubs in public right-of-way which are in direct conflict with proposed new construction shall be removed by the Contractor with the Engineer's approval. Trees and shrubs which are not in direct conflict with proposed new construction shall be saved and protected from damage.
- The Contractor shall give all property owners and/or tenants of developed property abutting the construction of this project a minimum of ten (10) days advance notice prior to start of construction.
- The Contractor shall be responsible for preserving property irons. The Contractor will be required to re-establish any property irons which are damaged or destroyed by his construction operations. Such irons shall be re-established by a licensed land surveyor in accordance with state laws.



Booked  
 P-199  
 R.DL  
 11/19/01  
 per P/24

**BENCHMARKS:**  
 R.R. Spike in N. Side of Power Pole  
 780' E. of C 151st. W. & 60' N.  
 of Section Line on Kellogg.  
 Elev. = 202.07 (City Datum)

R.R. Spike in Power Pole 493' N. &  
 30' E. of Section Corner @ 151st. W.  
 & Kellogg, adjacent to S.S. Lift Station.  
 Elev. = 207.28 (City Datum)

Top of 1" Iron 12" Deep, W/4 Cor.,  
 Sec. 26, Twp. 21-S, R-2-W.  
 Elev. = 209.13 (City Datum)

"□" cut on Top of Curb Adjacent to  
 Common Lot Line of Lots 16 & 17,  
 Block B, Auburn Hills 5th Addition.  
 Elev. = 202.65 (City Datum)

Sta. 0+00, Begin Line 1  
 Core into Existing Manhole.  
 Extend 8" Line NE. Adjust Rim  
 Elevation up 3.78' from 199.92  
 to 203.70. Reshape Invert as  
 Necessary to Maintain  
 Positive Flow. Cost of Coring  
 & Reshaping to be Included in  
 Bid Item, Standard MH.

Sta. 1+75.1, Line 1 =  
 Sta. 0+00, Begin Line 1A  
 Construct Standard  
 Manhole.  
 Top Elev. = 202.10

Sta. 3+93.0, Line 1  
 Construct Special Shallow  
 Manhole (Type A)  
 2-4" Stubs (N&E)  
 Top Elev. = 198.90

Install 53.0 L.F. Concrete  
 Encasement from Sta.  
 3+96.5 to Sta. 4+48.5  
 per City Specs.

Install 37.7 L.F. Flowable  
 Fill from Sta. 0+10.7 to  
 Sta. 0+48.4 per City  
 Specs.

Install 14.3 L.F. Concrete  
 Encasement from Sta.  
 0+42.4 to Sta. 0+56.7  
 per City Specs.

Sta. 4+53.0, End Line 1  
 Construct Special Shallow  
 Manhole (Type A)  
 2-4" Stubs (NE & S)  
 Top Elev. = 198.90

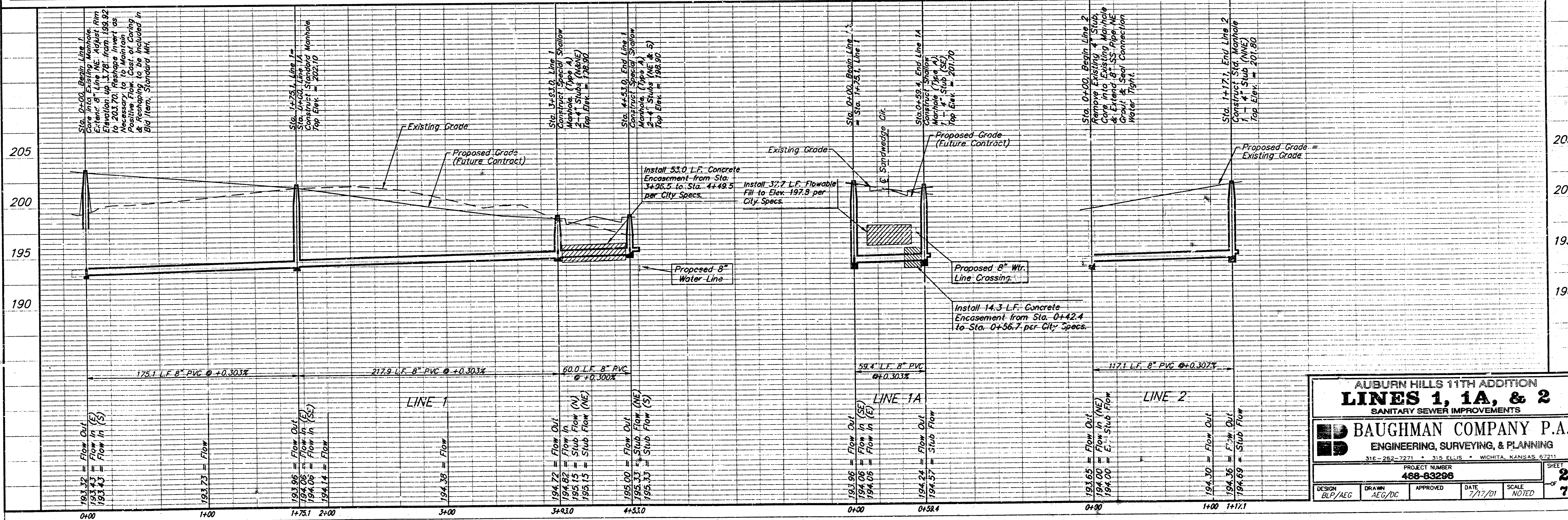
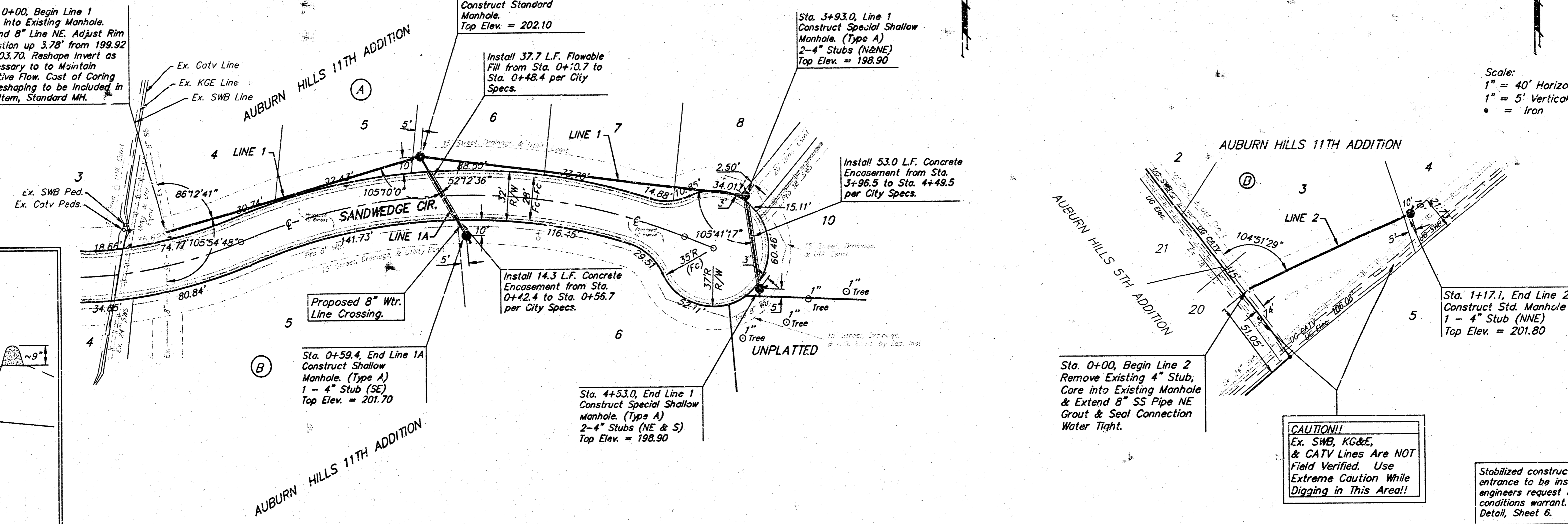
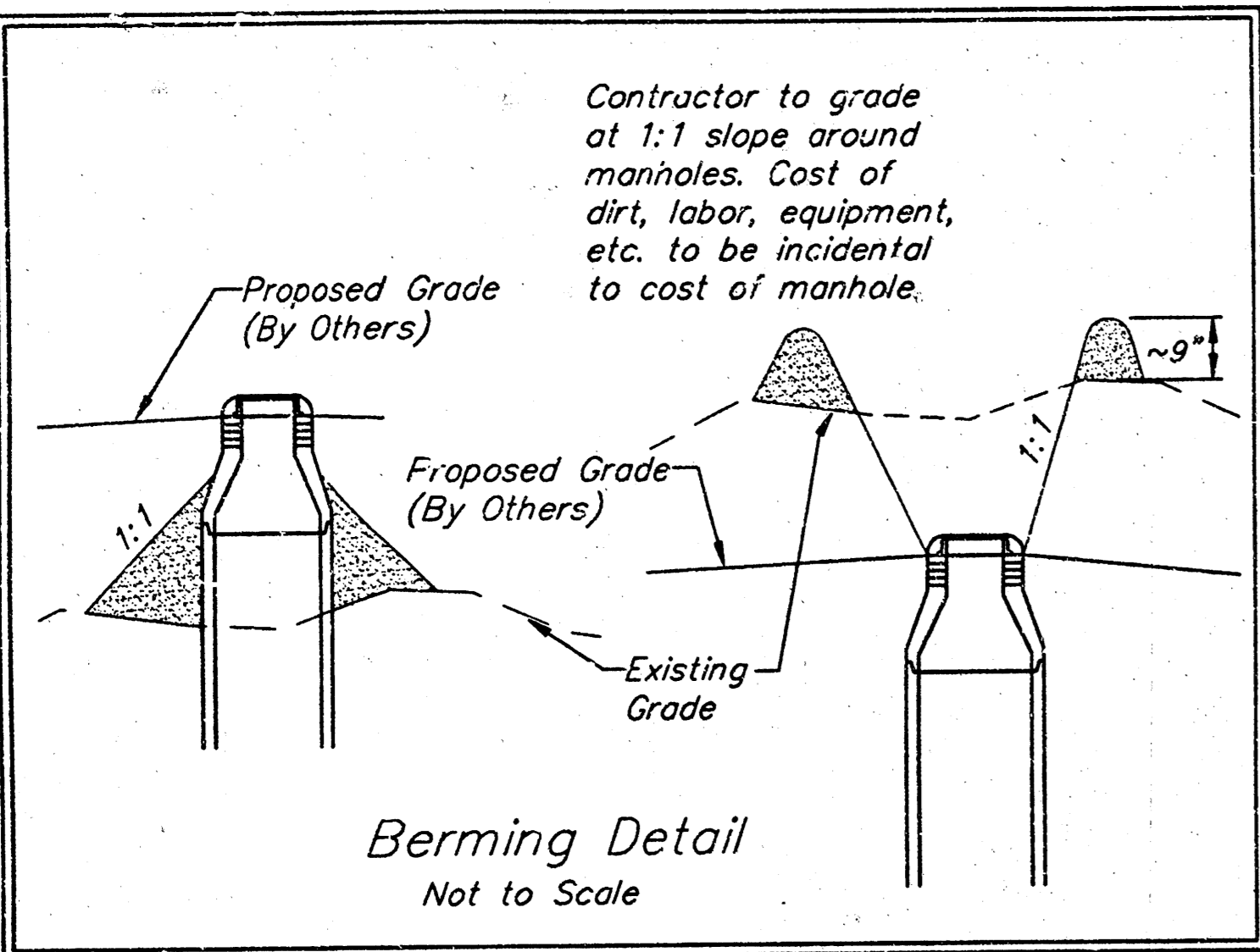
Sta. 0+59.4, End Line 1A  
 Construct Shallow  
 Manhole (Type A)  
 1-4" Stub (SE)  
 Top Elev. = 201.70

Sta. 0+00, Begin Line 2  
 Remove Existing 4" Stub,  
 Core into Existing Manhole  
 & Extend 8" SS Pipe NE  
 Grout & Seal Connection  
 Water Tight.

**CAUTION!**  
 Ex. SWB, KG&E,  
 & CATV Lines Are NOT  
 Field Verified. Use  
 Extreme Caution While  
 Digging in This Area!

Stabilized construction  
 entrance to be installed at  
 engineers request if  
 conditions warrant. See  
 Detail, Sheet 6.

Scale:  
 1" = 40' Horizontal  
 1" = 5' Vertical  
 • = Iron



AUBURN HILLS 11TH ADDITION  
**LINES 1, 1A, & 2**  
 SANITARY SEWER IMPROVEMENTS

**BAUGHMAN COMPANY P.A.**  
 ENGINEERING, SURVEYING, & PLANNING

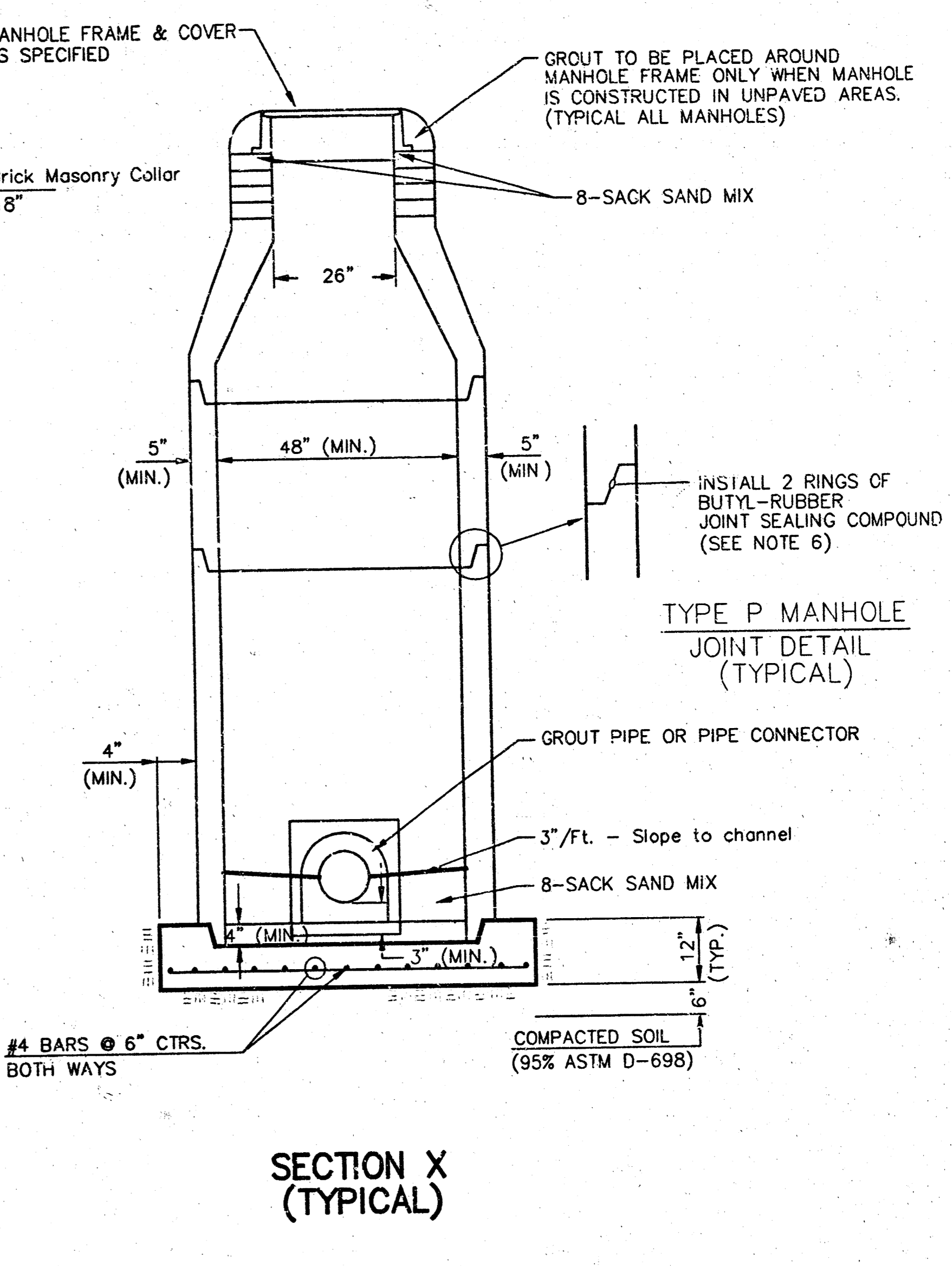
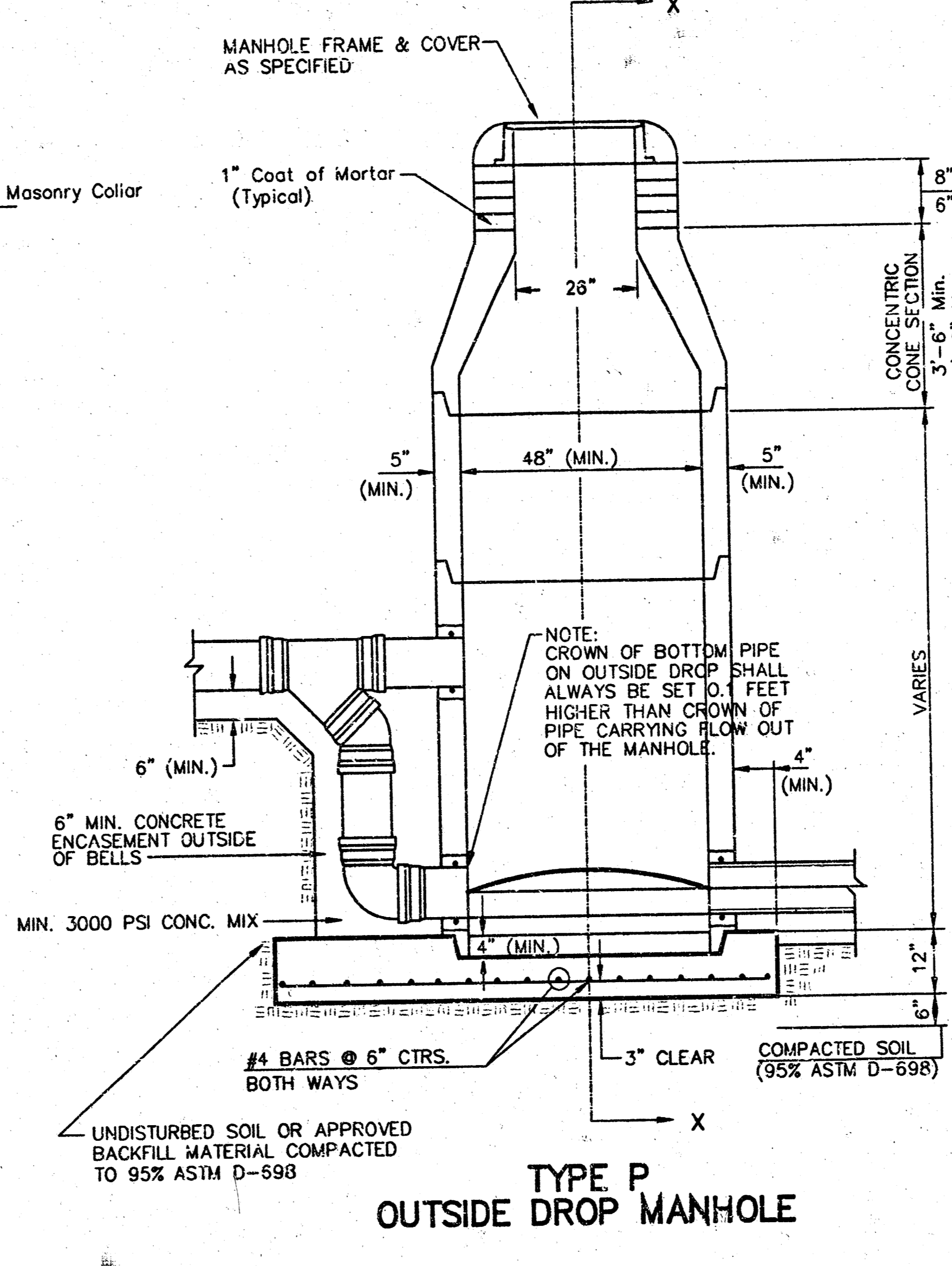
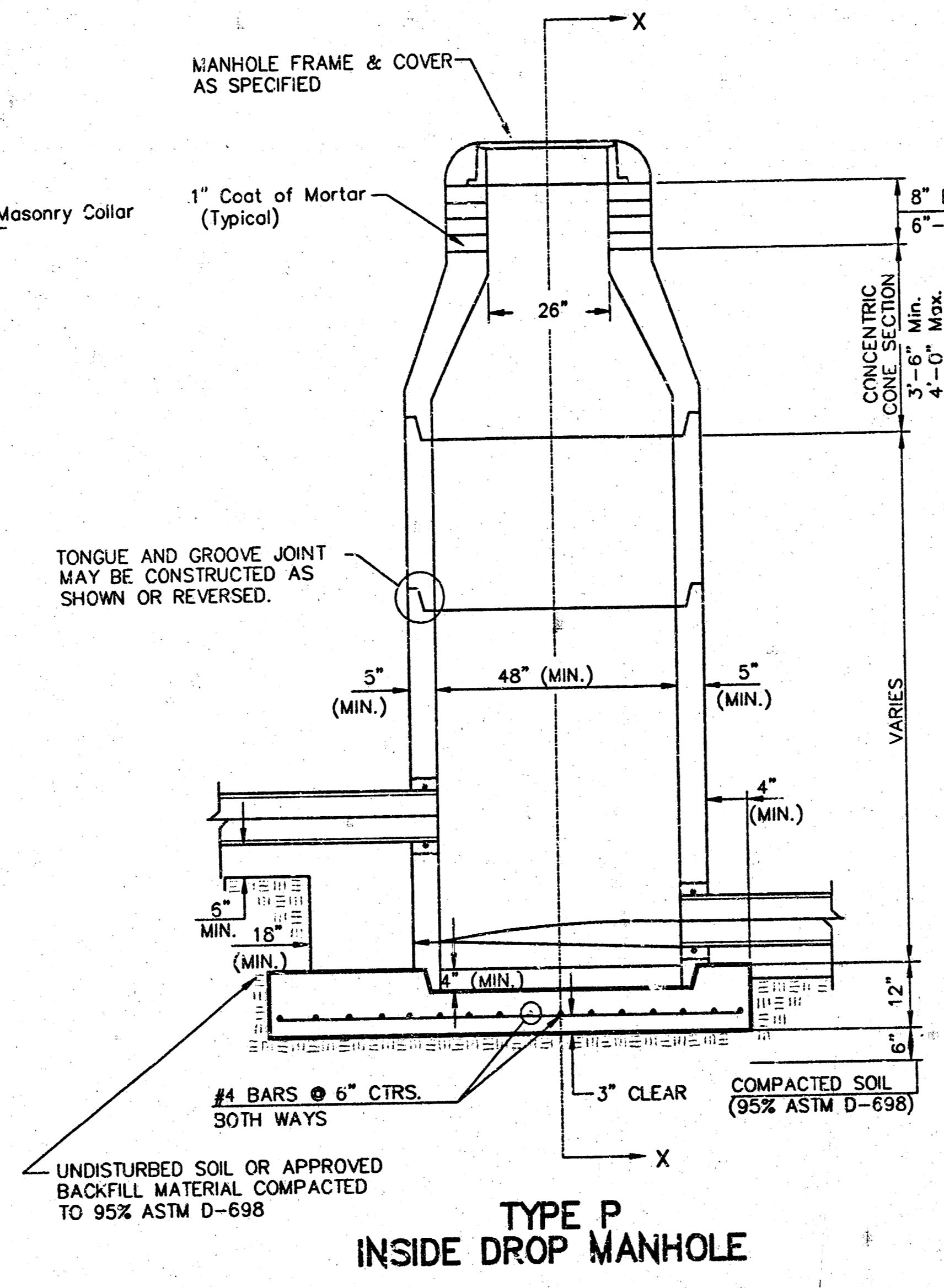
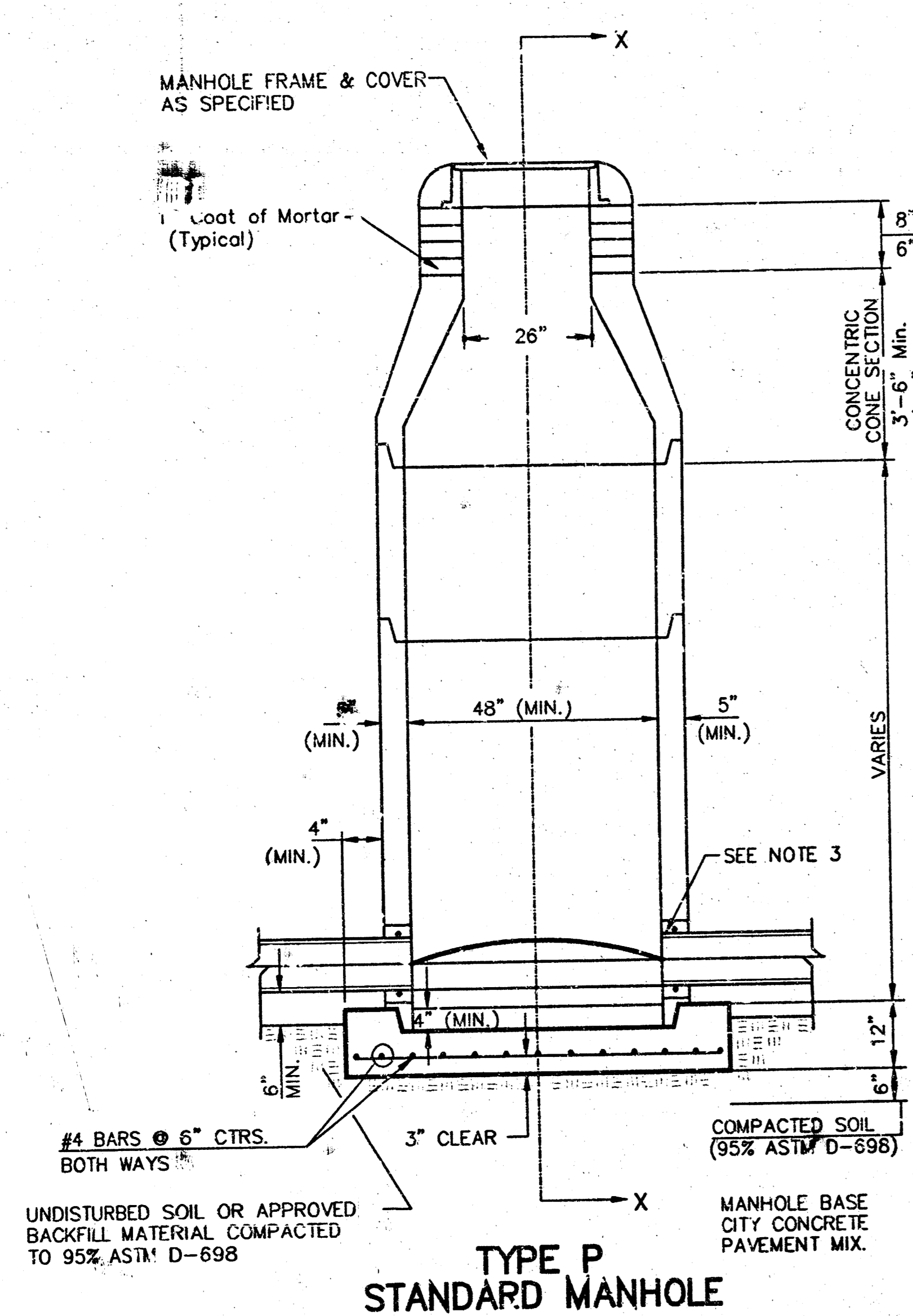
316-252-2271 • 315 ELLIS • WICHITA, KANSAS 67211

PROJECT NUMBER  
**488-83298**

DESIGN: BLP/AEG    DRAWN: AEG/DC    APPROVED: [Signature]    DATE: 7/17/01    SCALE: NOTED

SHEET  
**2**  
 OF  
**7**

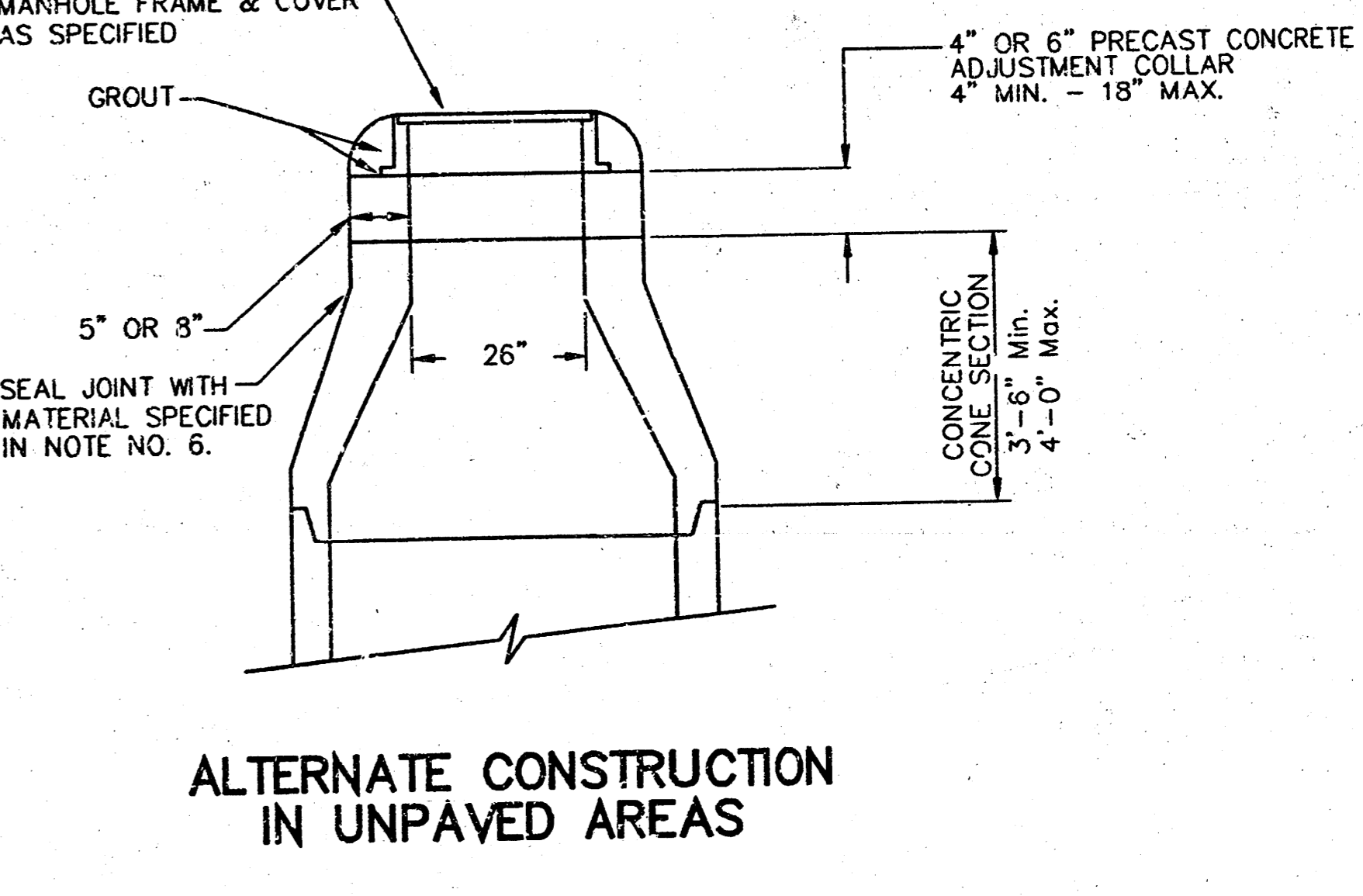
# SEWER APPURTENANCES DETAILS



- GENERAL NOTES**
- PRECAST MANHOLE NOTES
- ALL PRECAST CONCRETE MANHOLE SECTIONS SHALL CONFORM TO THE LATEST REVISIONS OF A.S.T.M. C478 AS MODIFIED BY THE SPECIFICATIONS.
  - NON-SHRINK GROUT SHALL BE NON-METALLIC TYPE.
  - APPROVED FLEXIBLE WATERSTOP GASKETS SHALL BE INSTALLED TO JOIN THE SEWER TO THE MANHOLE WALL WHEN A.B.S. COMPOSITE PIPE OR P.V.C. PIPE IS USED. FOR OTHER TYPES OF PIPE THE SEWER SHALL BE GROUTED IN PLACE WITH NON-SHRINK GROUT. THE SEWER PIPE SHALL BE SUPPORTED WITH CONCRETE ENCASEMENT A MINIMUM OF 3 FEET FROM THE MANHOLE WALL AND TO THE FIRST JOINT FOR V.C.P. SUCH THAT THE JOINT REMAINS FLEXIBLE.
  - ALL INSIDE SURFACES OF THE CONCRETE MANHOLE WHICH WOULD BE EXPOSED TO SEWER GAS SHALL BE COATED WITH 2 COATS TNEVEC SERIES 66 HI-BUILD EPOXOLINE, DRY THICKNESS OF 8 MILS (MIN.)
  - EXTERIOR MANHOLE WALLS SHALL BE COATED WITH 1 COAT MOBILARMA 633 BITUMINOUS COATING.
  - JOINT SEALING COMPOUND SHALL BE KENT SEAL NO. 2 OR APPROVED EQUAL.
  - PRECAST MANHOLES SHALL BE SET AT LEAST 4 INCHES INTO THE MANHOLE BASE.
  - TOP OF MANHOLE FLOOR SLAB SHALL BE AT LEAST 3 INCHES BELOW THE FLOW LINE OF THE OUTLET PIPE TO INSURE SUFFICIENT MINIMUM THICKNESS OF SHAPED INVERT.
  - LIFTING HOLES SHALL BE FILLED WITH NON-SHRINK GROUT AND THE INTERIOR SURFACE COATED AS SPECIFIED.
  - MORTAR USED IN MASONRY CONSTRUCTION SHALL CONTAIN 8 SACKS OF CEMENT PER CUBIC YARD. CONCRETE USED IN MANHOLE BASES SHALL CONFORM TO THE REQUIREMENTS OF CONCRETE FOR CONCRETE PAVEMENT CONSTRUCTION AS SPECIFIED IN THE CITY STANDARD PAVING SPECIFICATIONS USING CITY CONCRETE PAVEMENT MIX WITHOUT AIR ENTRAINING ADMIXTURE. MORTAR SHALL BE PLACED AROUND THE MANHOLE RING AS SHOWN ON THE DRAWINGS WHEN MANHOLES ARE CONSTRUCTED IN UNPAVED AREAS. MANHOLES CONSTRUCTED WHERE PIPE SIZES ARE SMALLER THAN 24" SHALL HAVE AN INSIDE DIAMETER OF 4". MANHOLES CONSTRUCTED WHERE PIPE SIZES ARE 24" OR LARGER SHALL HAVE AN INSIDE DIAMETER OF 5". COMPLETED MANHOLE SHALL BE WITHOUT LEAKS AND WATER TIGHT.

- REINFORCING STEEL SHALL BE INSTALLED IN THE MANHOLE BASES AND SHALL CONSIST OF NO. 4 BARS PLACED ON 6" CENTERS IN BOTH DIRECTIONS. THE MANHOLE BASE REINFORCEMENT SHALL BE PLACED AT LEAST 3" ABOVE THE BOTTOM OF THE MANHOLE BASE. ALL COSTS FOR FURNISHING AND INSTALLING REINFORCING STEEL SHALL BE INCLUDED IN THE UNIT PRICE BID FOR THE MANHOLE.
- OPENINGS SHALL BE CUT INTO THE MANHOLE WALL WHEN OUTSIDE DROPS ARE CONSTRUCTED ON EXISTING MANHOLES. SUCH OPENINGS CUT INTO EXISTING MANHOLES SHALL BE AS SMALL AS PRACTICAL TO FACILITATE INSTALLING AND GROUTING THE NEW PIPE IN PLACE. WATERSTOP GASKETS SHALL BE USED WITH P.V.C. AND A.B.S. COMPOSITE PIPE. THE NEW PIPE SHALL BE GROUTED INTO THE OPENING USING AN APPROVED NON-SHRINK GROUT FOR THE FULL MANHOLE WALL THICKNESS. THE EXTERIOR OF THE COMPLETED CONNECTION SHALL BE SEALED WITH AN APPROVED BITUMINOUS COATING SUCH THAT THE CONNECTION WILL BE WATER TIGHT. FLOOR OF MANHOLE SHALL BE MODIFIED TO FORM NEW FLOW CHANNEL FOR THE NEW CONNECTION AS INDICATED BY THE DRAWING. THIS WORK, INCLUDING MODIFICATION OF MANHOLE FLOOR, SHALL BE PAID FOR AT THE UNIT PRICE BID FOR OUTSIDE DROP STACK CONSTRUCTED ON EXISTING MANHOLE.
- THE FLOORS OF ALL MANHOLES SHALL BE SHAPED WITH FLOW CHANNELS SUCH THAT THE MANHOLES WILL BE SELF-CLEANING AND FREE OF AREAS WHERE SOLIDS COULD BE DEPOSITED AS SEWAGE FLOWS THROUGH THE MANHOLE FROM ALL INLET PIPES TO THE OUTLET PIPE. FLOW CHANNELS SHALL BE FORMED TO MATCH THE BOTTOM HALVES OF THE INFLOWING PIPES AND THE OUTFLOWING PIPE AS SHOWN BY THE DRAWINGS EXCEPT FOR INSIDE DROP MANHOLES. FLOW CHANNELS FOR INSIDE DROP MANHOLES SHALL BE CONSTRUCTED AS INDICATED BY THE DRAWING. MANHOLE FLOORS SHALL HAVE SLOPES OF 3 INCHES PER FOOT IN THE AREAS OUTSIDE OF THE FLOW CHANNELS SLOPED TOWARD THE FLOW CHANNELS. PIPES LAID THROUGH MANHOLES SHALL HAVE THE TOP HALF REMOVED TO HEAT LINES FOR THE FULL INSIDE DIAMETER OF THE MANHOLE. MANHOLE FLOORS SHALL THEN BE SHAPED AROUND THE BOTTOM HALF OF THE PIPE WHICH FORMS THE FLOW CHANNEL.
- PIPES INSTALLED WITHIN THE EXCAVATION MADE FOR THE MANHOLE SHALL BE CRADLED WITH CONCRETE TO THE LIMITS OF THE MANHOLE EXCAVATION. WHEN CLAY PIPE IS USED, THE CRADLE SHALL EXTEND TO THE FIRST JOINT OUTSIDE THE MANHOLE. THE CRADLE SHALL BE TERMINATED AT THE CLAY PIPE JOINT IN A MANNER WHICH WILL MAINTAIN THE FLEXIBILITY OF THE JOINT. COST OF CRADLE WITHIN MANHOLE EXCAVATION OR TO CLAY PIPE JOINTS ADJACENT TO MANHOLE SHALL BE INCLUDED IN THE UNIT PRICE BID FOR THE MANHOLE.

- MANHOLE COVER CASTINGS AND MANHOLE FRAME CASTINGS SHALL CONFORM TO THE REQUIREMENTS AS INDICATED IN THE STANDARD SPECIFICATIONS AND AS SHOWN IN THE STANDARD DETAIL DRAWING.
- THE VERTICAL DROP IN INSIDE DROP MANHOLES SHALL NOT EXCEED 2' FOR INFLOWING PIPES SIZED 12" OR SMALLER AND 2' FOR INFLOWING PIPES LARGER THAN 12". THE CROWNS OF INFLOWING PIPES SHALL NEVER BE SET LOWER THAN THE CROWN OF THE OUTFLOWING PIPE.
- STANDARD MANHOLES AND STANDARD INSIDE DROP MANHOLES SHALL BE BID AS STANDARD MANHOLES FOR THE TYPE AND DIAMETER INDICATED. OUTSIDE DROP MANHOLES SHALL BE BID AS STANDARD OUTSIDE DROP MANHOLES FOR THE TYPE AND DIAMETER INDICATED. ALL MANHOLE DIAMETERS WILL BE 4" UNLESS INDICATED OTHERWISE.
- A BRICK MASONRY COLLAR SHALL BE INSTALLED BETWEEN THE CAST IRON FRAME AND THE CONCENTRIC CONE. THE COLLAR WILL HAVE 8" WALLS AND A VERTICAL HEIGHT OF 6" MINIMUM AND 18" MAXIMUM. A 1" COAT OF MORTAR WILL BE PLASTERED ON THE OUTSIDE OF THE COLLAR. THE USE OF PRE-CAST CONCRETE SPACERS FOR MANHOLE TOP ADJUSTMENT IS ALSO ALLOWED.



CITY OF WICHITA  
**STD. MANHOLE DETAILS**  
 SEWER APPURTENANCES

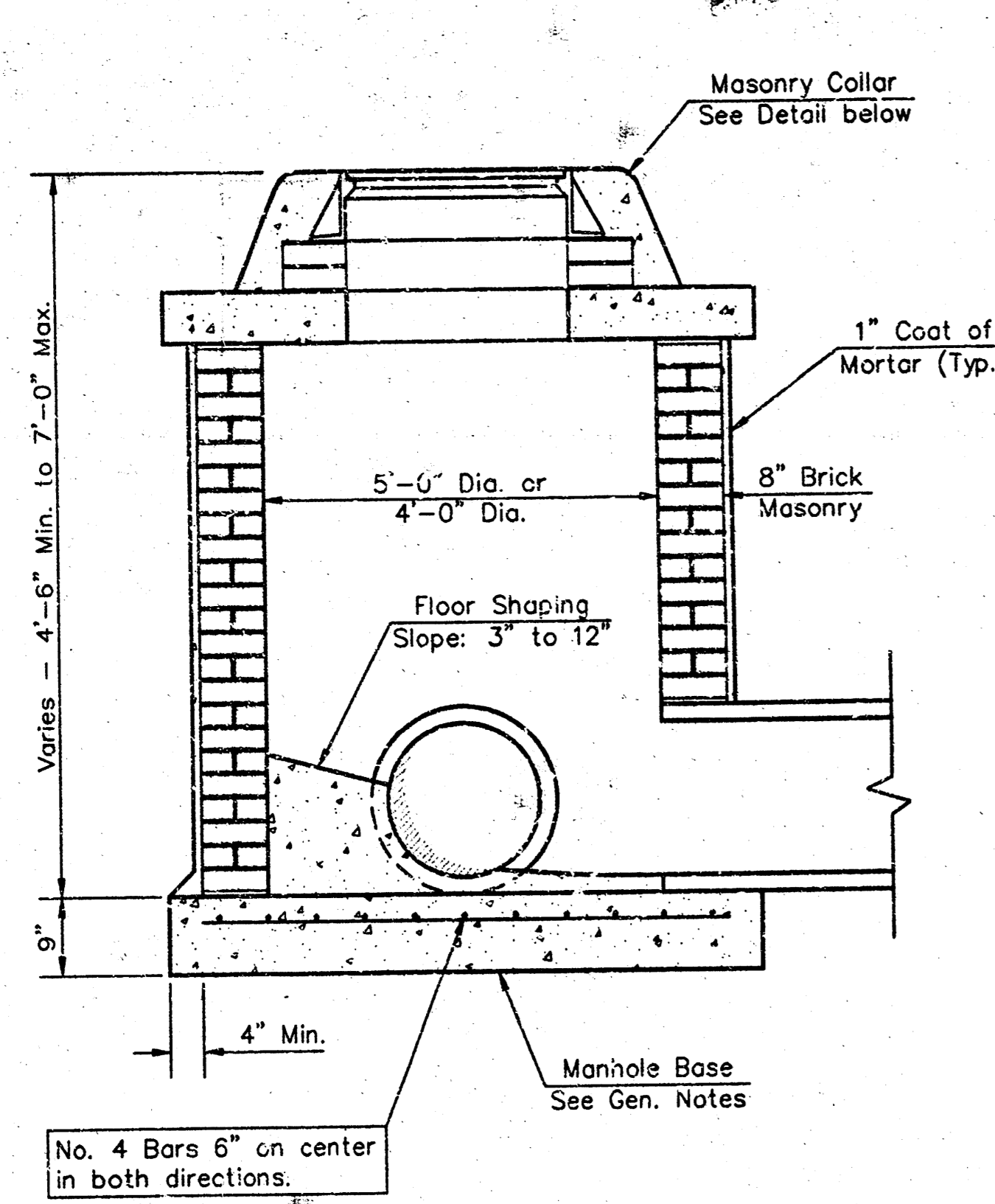
**BAUGHMAN COMPANY P.A.**  
 ENGINEERING, SURVEYING, & PLANNING

316-262-7271 • 315 ELLIS • WICHITA, KANSAS 67211

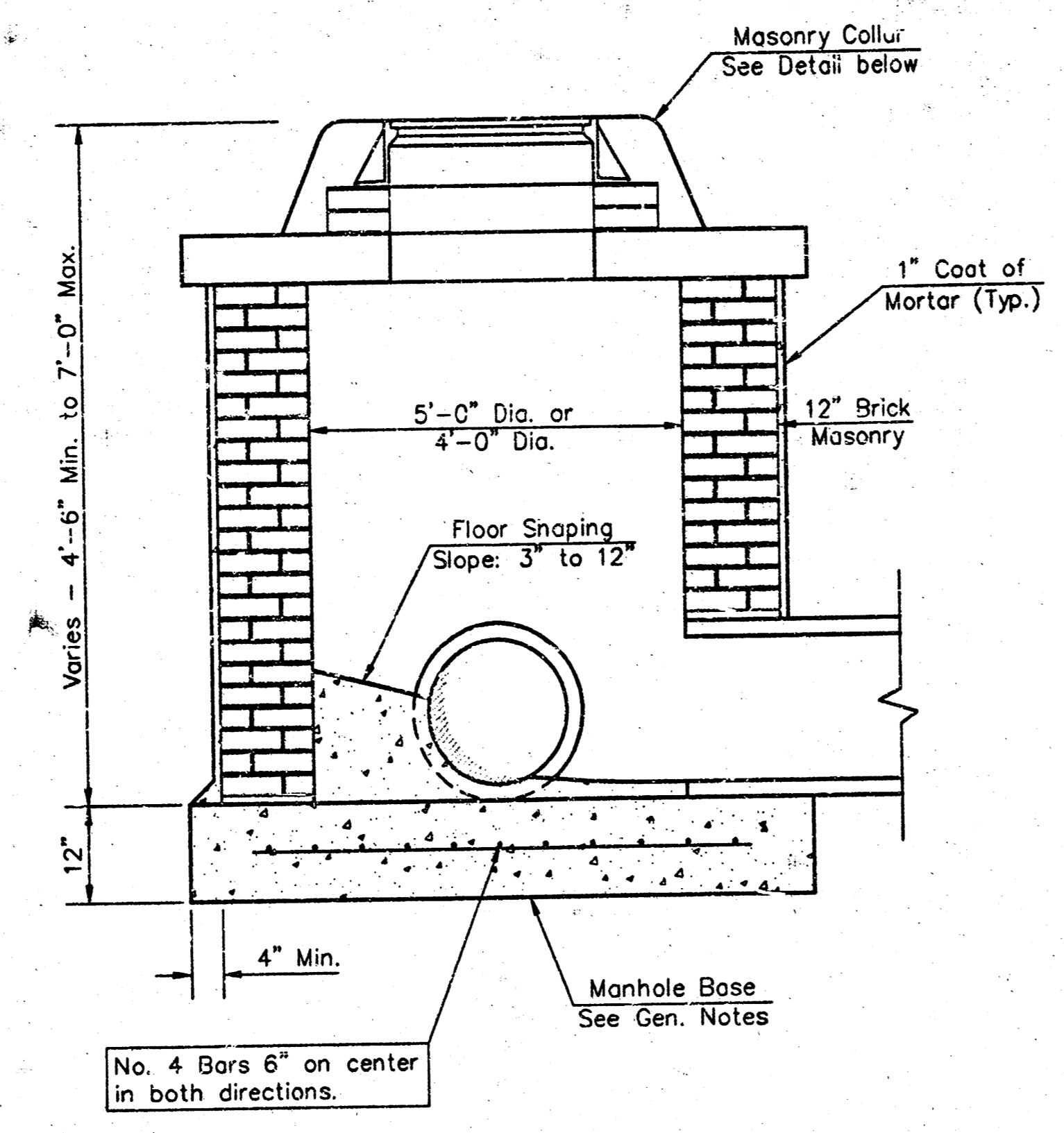
PROJECT NUMBER  
**488-83296**

DESIGN STAFF    DRAWN STAFF    APPROVED    DATE 7-17-01    SCALE NONE

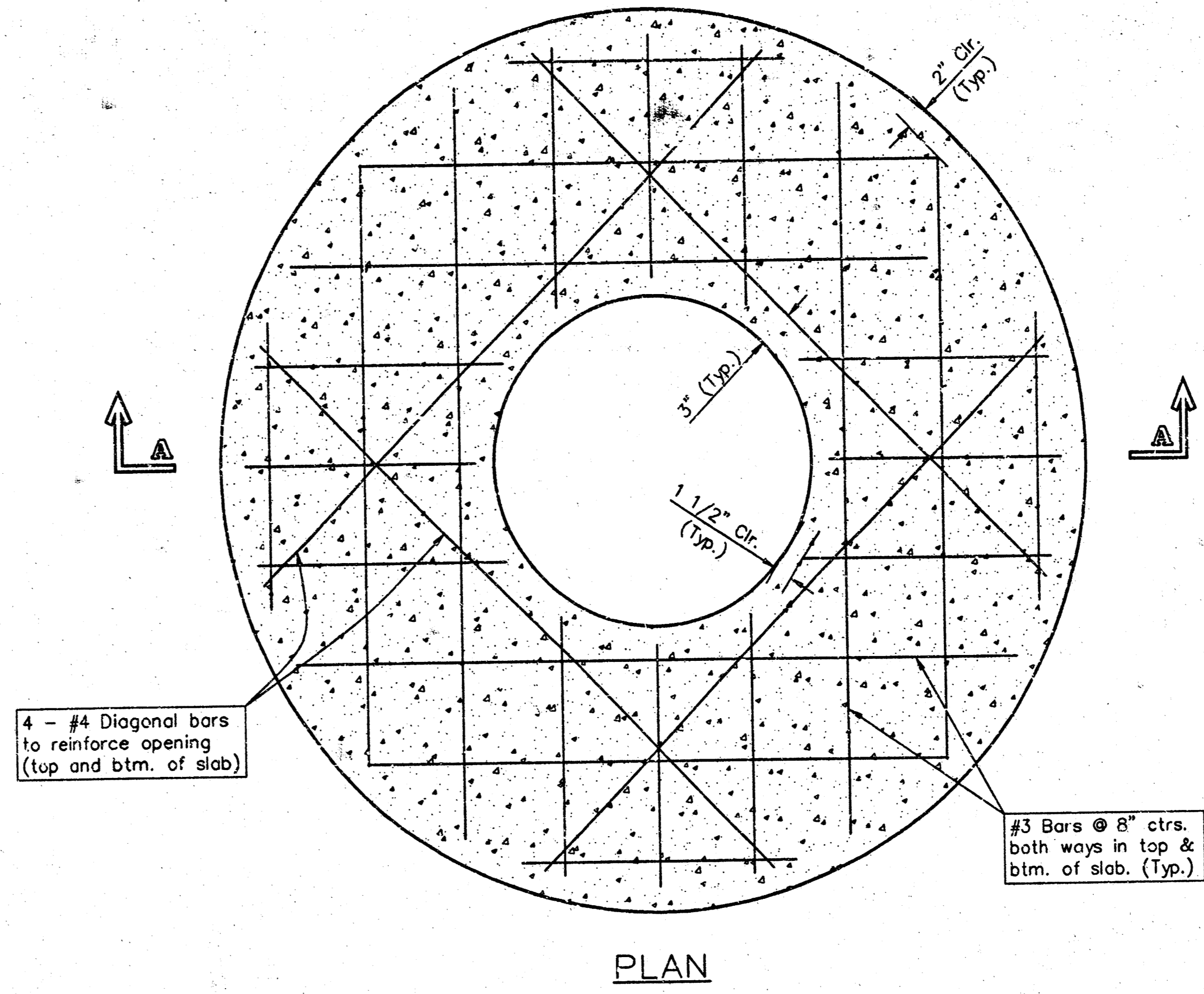
SHEET **3** OF **7**



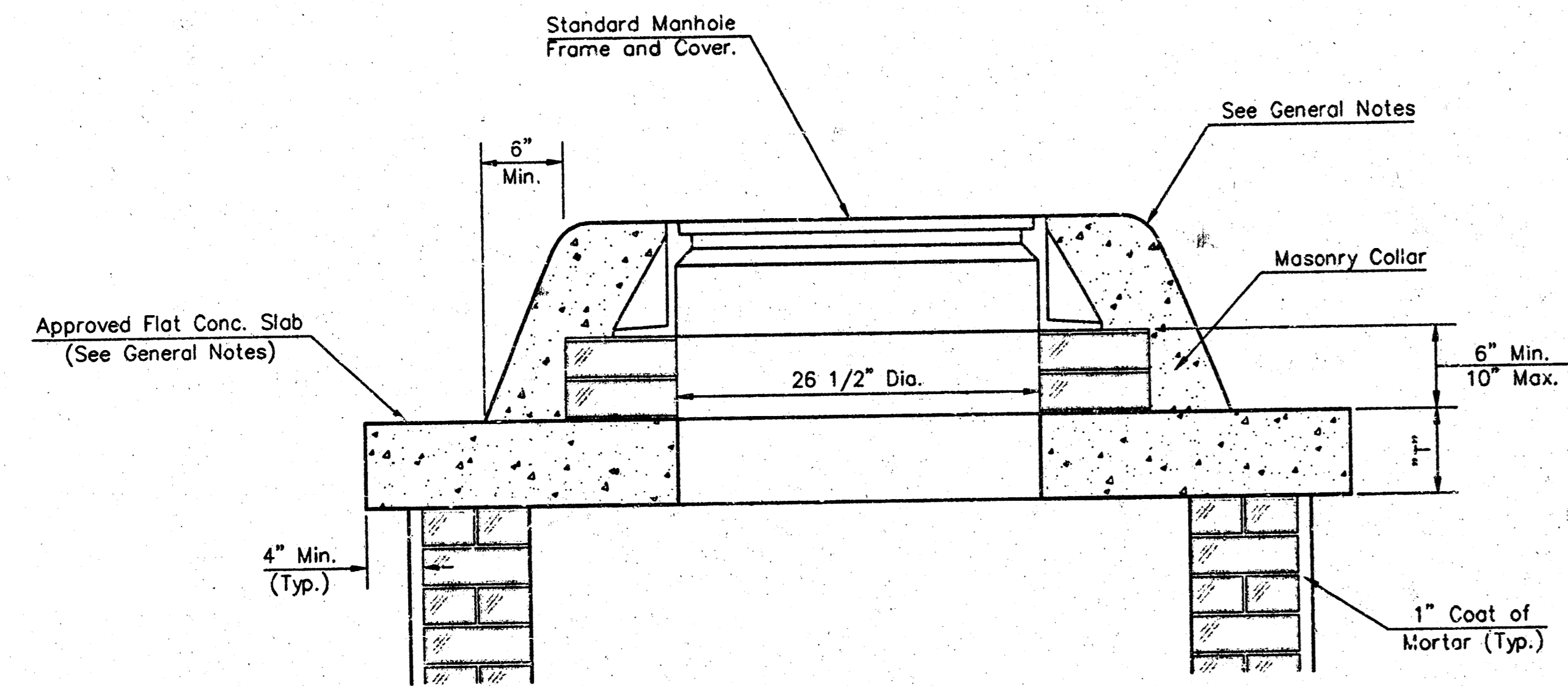
SHALLOW TYPE "A" MANHOLE



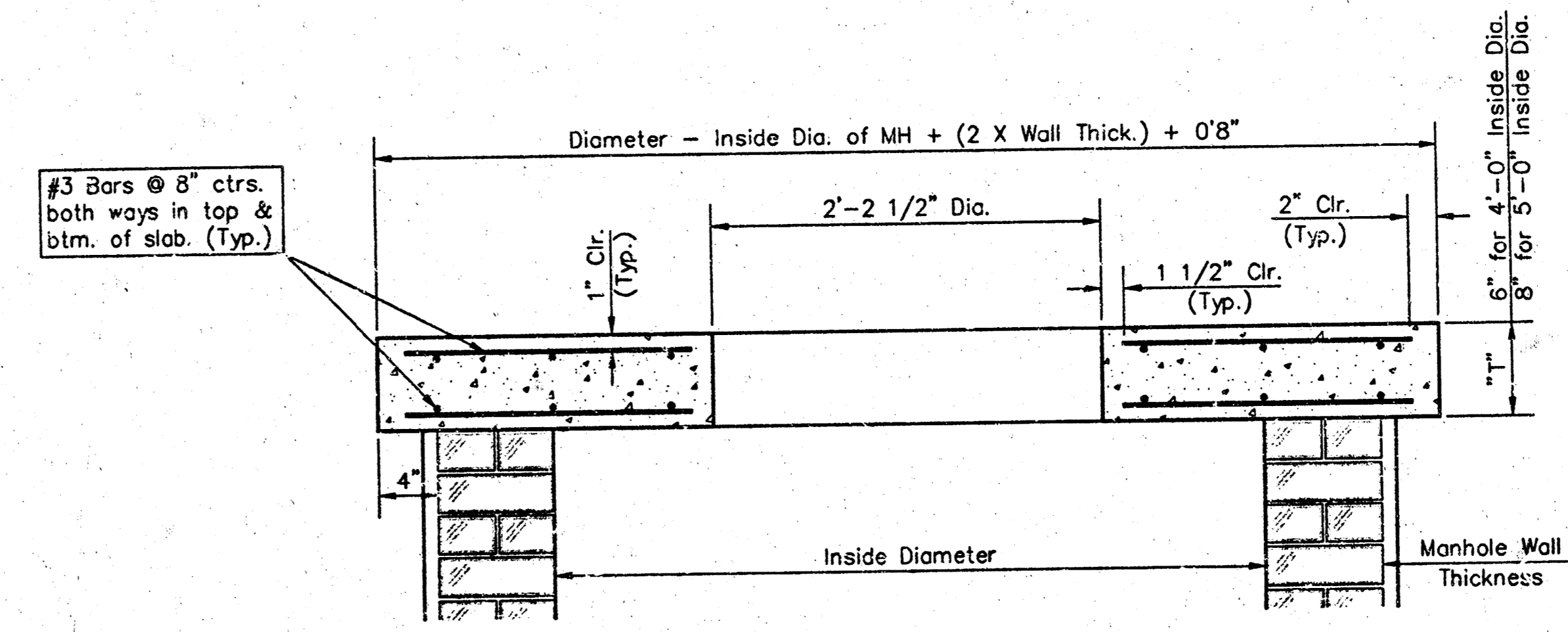
SHALLOW TYPE "B" MANHOLE



PLAN

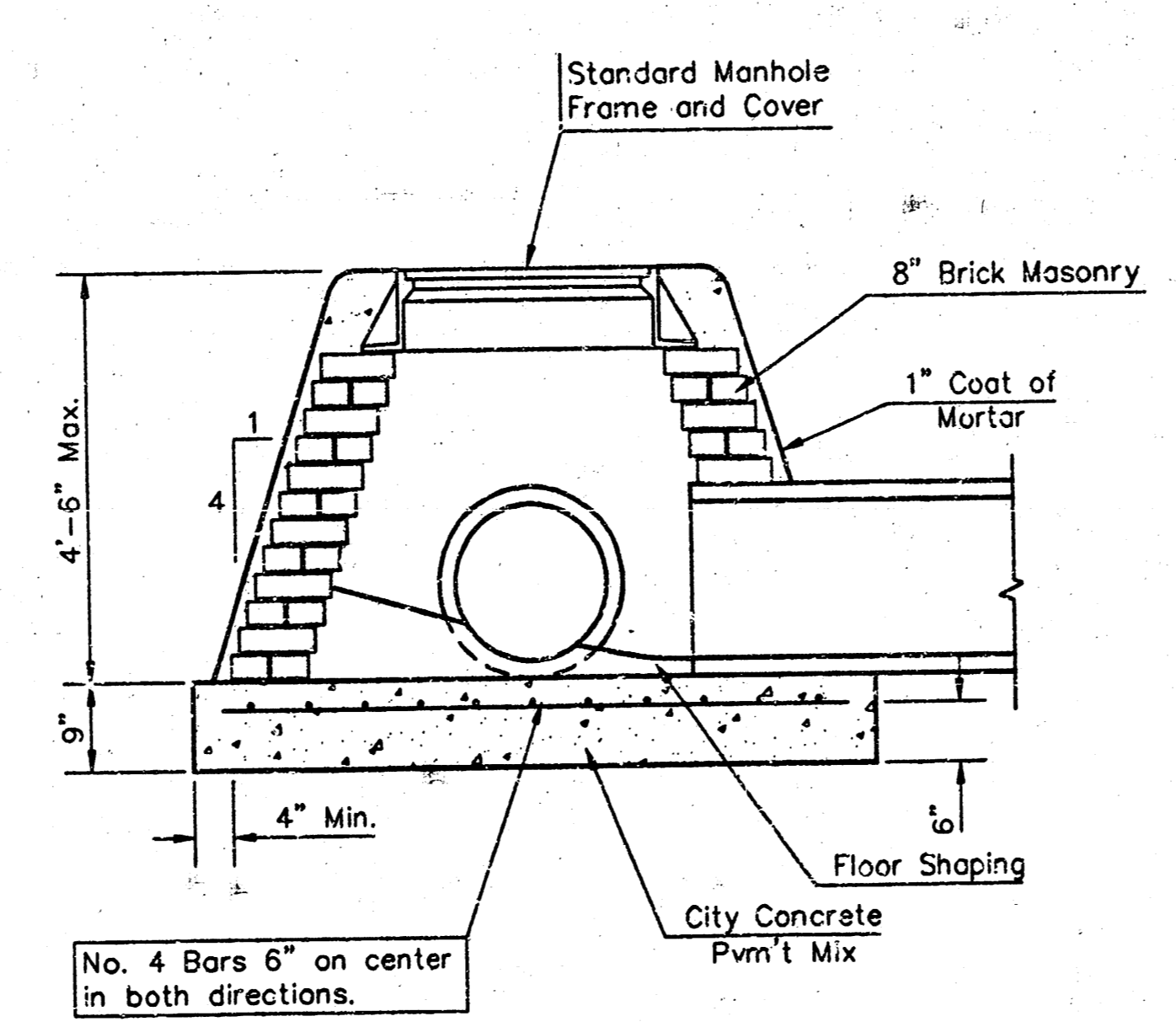


MASONRY COLLAR DETAIL

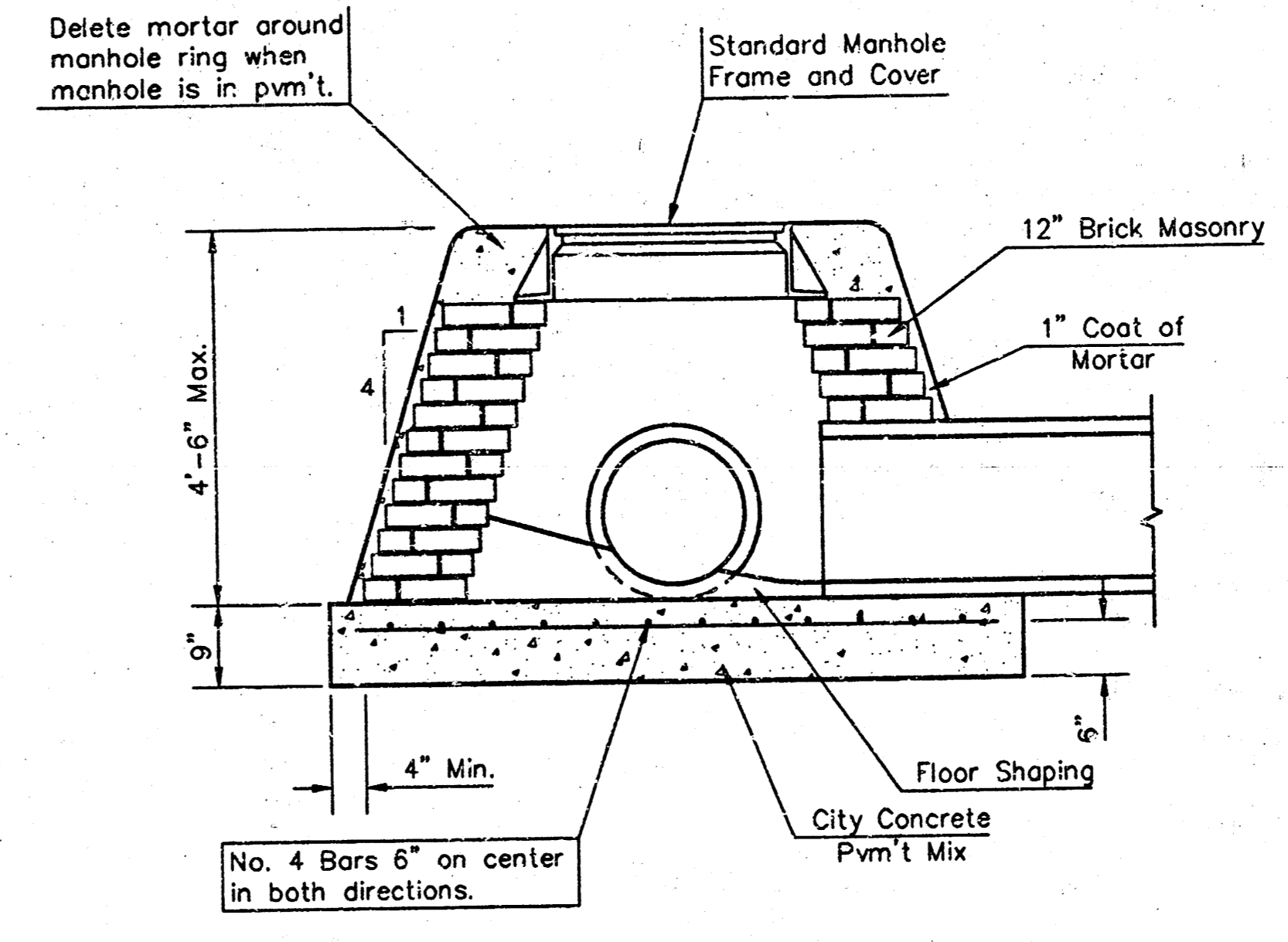


SECTION A-A

FLAT CONCRETE SLAB DETAILS



SPECIAL SHALLOW TYPE "A" MANHOLE



SPECIAL SHALLOW TYPE "B" MANHOLE

GENERAL NOTES

- Mortar used in masonry construction shall contain 8 sacks of cement per cubic yard. Concrete used in manhole bases shall conform to the requirements of concrete for concrete pavement construction as specified in the city standard paving specifications using city concrete cement mix without air entraining admixture. Mortar shall be placed around the manhole ring as shown on the drawings when manholes are constructed in unpaved areas. Type "A" shallow manholes can be used on sewers when the manhole is not located within public street pavement. Manholes constructed where pipe sizes are smaller than 24" shall have an inside diameter of 4". Manholes constructed where pipe sizes are 24" or larger shall have an inside diameter of 5". Completed manhole shall be without leaks and water tight.
- Reinforcing steel shall be installed in the manhole bases and shall consist of no. 4 bars placed on 6" centers in both directions. The manhole base reinforcement shall be placed 6" above the bottom of the manhole base. All costs for furnishing and installing reinforcing steel shall be included in the unit price bid for the manhole.
- The floors of all manholes shall be sloped with flow channels such that the manholes will be self cleaning and free of areas where solids could be deposited as sewage flows through the manhole from all inlet pipes to the outlet pipe. Flow channels shall be formed to match the bottom halves of the inflowing pipes and the outflowing pipe as shown by the drawings. Manhole floors shall have slopes of 3 inches per foot in the areas outside of the flow channels sloped toward the flow channels. Pipes laid through manholes shall have the top half removed to neat lines for the full inside diameter of the manhole. Manhole floors shall then be shaped around the bottom half of the pipe which forms the flow channel.
- Pipes installed within the excavation made for the manhole shall be cradled with concrete to the limits of the manhole excavation. When clay pipe is used, the cradle shall extend to the first joint outside the manhole. The cradle shall be terminated at the pipe joint in a manner which will maintain the flexibility of the joint. Cost of cradle within manhole excavation or to clay pipe joints adjacent to manhole shall be included in the unit price bid for the manhole.
- Manhole cover castings and manhole frame castings shall conform to the requirements as indicated in the standard specifications and as shown in the standard detail drawings.
- The crowns of inflowing pipes shall never be set lower than the crown of the outflowing pipe.
- Standard shallow manholes type "A" and "B" shall be paid for at the unit price bid per each for the type and diameter indicated. Standard special shallow manholes type "A" and "B" shall be paid for at the unit price bid per each for the type indicated. All standard shallow manhole diameters will be 4' unless indicated otherwise.
- All brick used in manhole construction shall meet Grade SW of ASTM C652 or C62-B7.

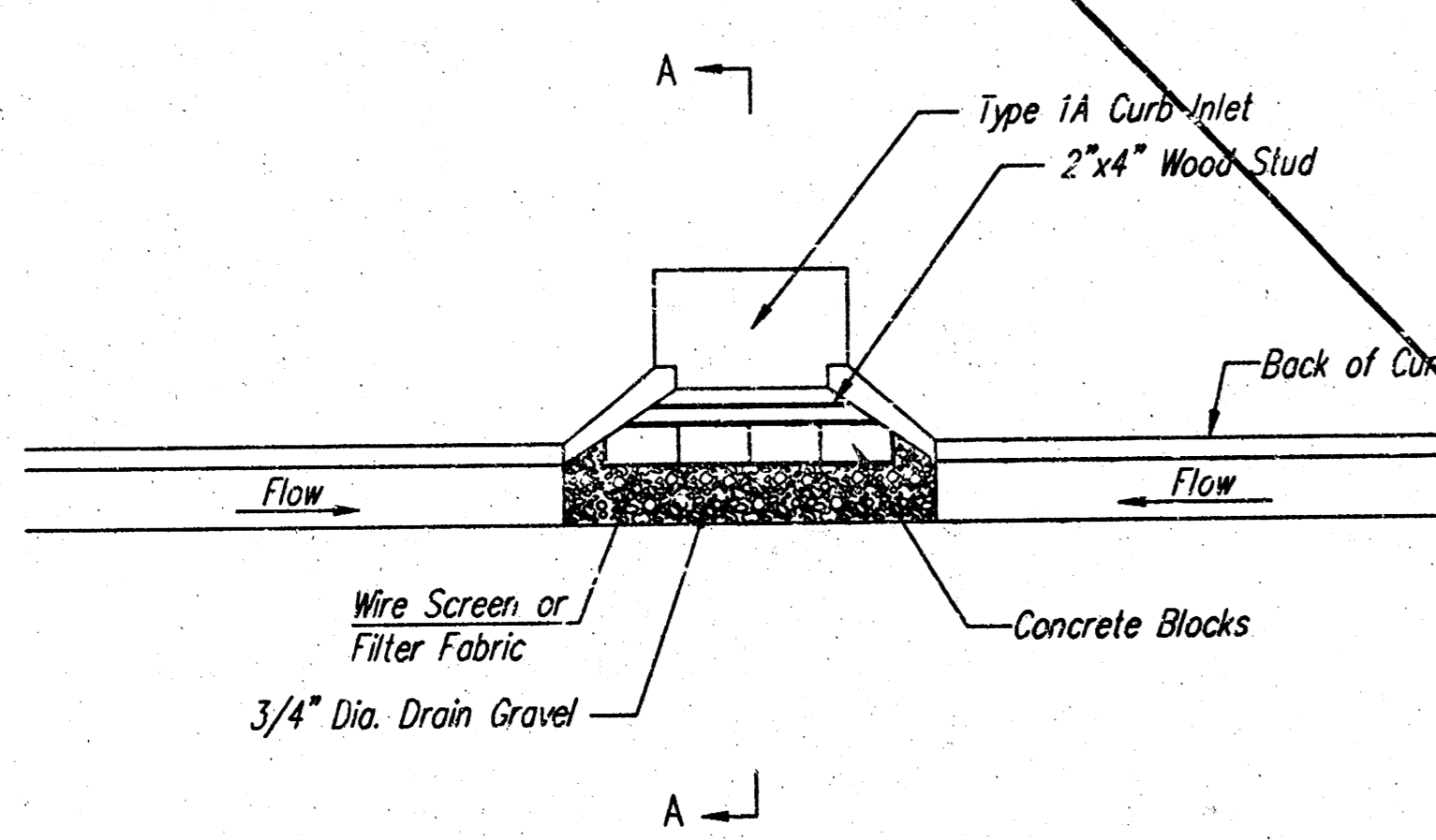
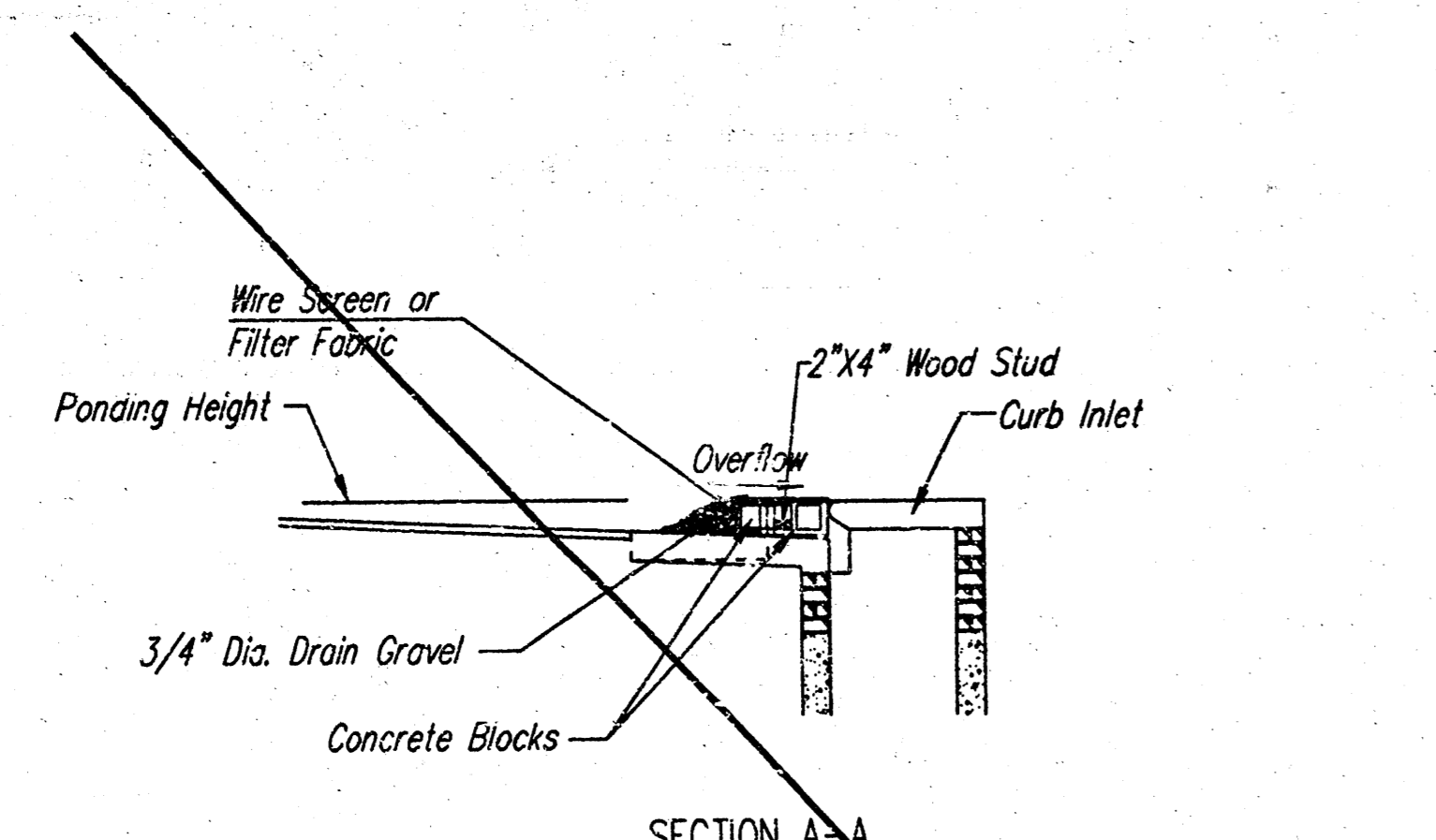
CITY OF WICHITA, KANSAS  
**Std. Manhole Detail**  
 TYPE "A" AND TYPE "B"

**BAUGHMAN COMPANY P.A.**  
 ENGINEERING, SURVEYING, & PLANNING  
 316-262-7271 • 315 ELLIS • WICHITA, KANSAS 67211

PROJECT NUMBER  
**488-93296**

DESIGN C.O.# DRAWN Staff APPROVED DATE 7-17-01 SCALE NONE SHEET 4 OF 7





**CURB INLET GRAVEL FILTERS**  
(INLET PROTECTION-RESIDENTIAL STREETS ONLY)

NOTE: Other types of curb inlet protection may be approved by the city so long as equal protection is provided.

A gravel inlet filter shall be installed at sump locations on residential streets. This type of protection is not to be used on arterial or collector streets at any time that it would pose an undue traffic hazard.

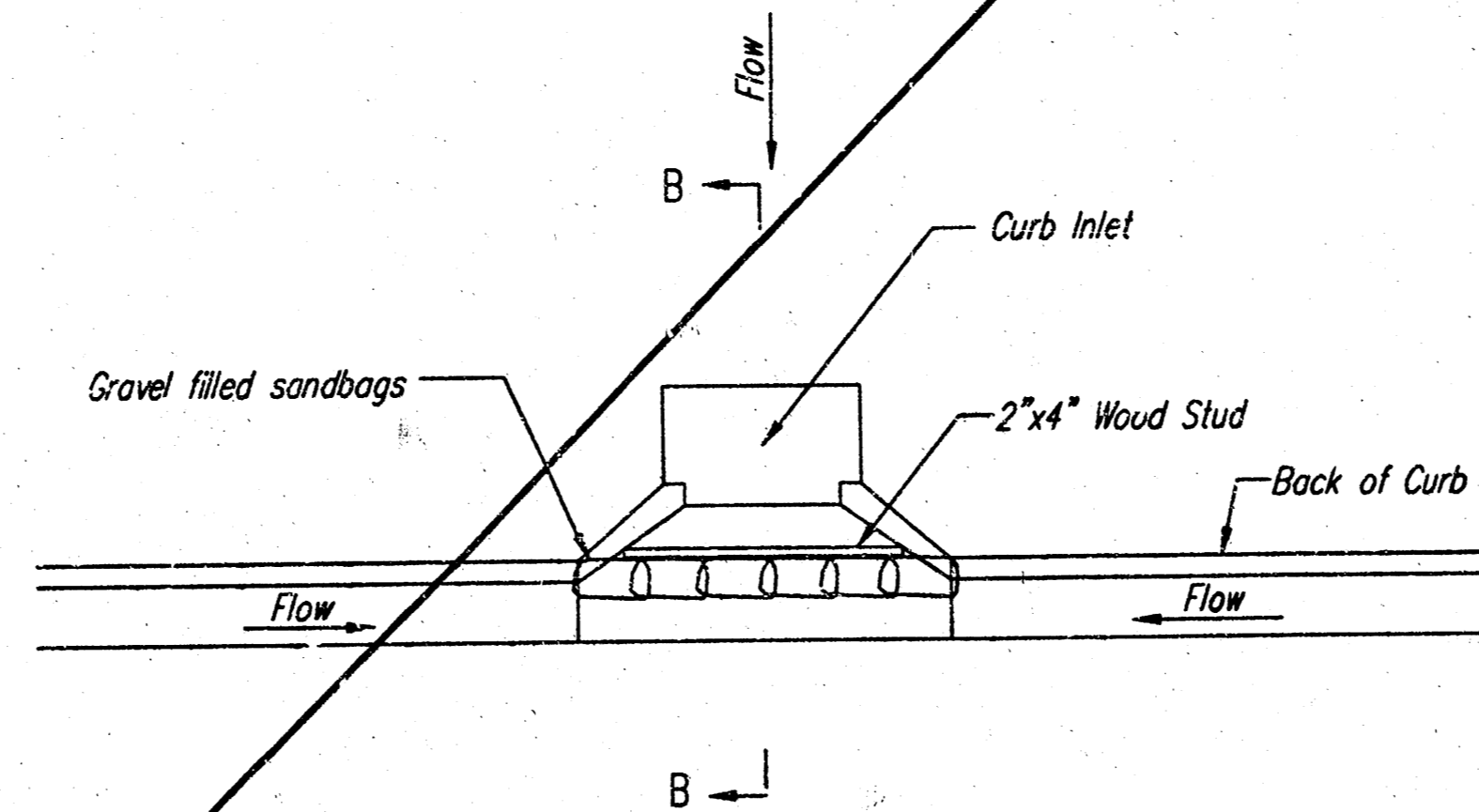
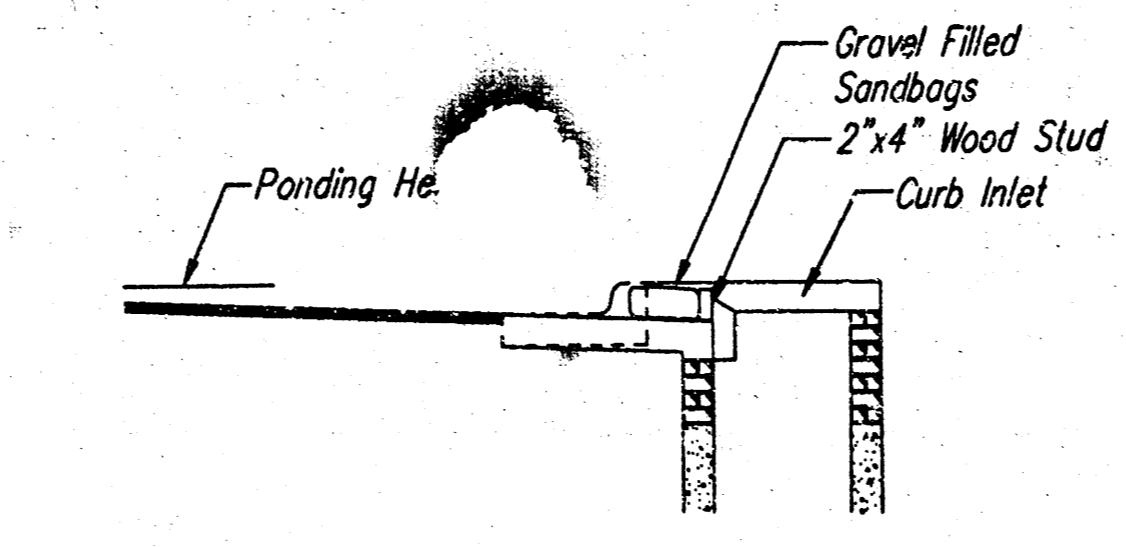
**Instructions for Installing:**

- STEP 1: Place concrete blocks around the inlet as shown on drawing. Insert 2x4 board as shown.
- STEP 2: Wrap 1/2" mesh wire screen around the concrete blocks.
- STEP 3: Place 1" to 1-1/2" diameter rock around the blocks and wire screen. Be sure the rock extends down from the top of the concrete block.
- STEP 4: To prevent damage to vehicles, signs warning drivers about the structures may be necessary. An alternative installation is the use of gravel bags supported by a 2"x4" board to prevent collapsing.

Use of rock with diameters smaller than 1" in the bag may result in clogging of pores and reduce the amount of water flowing into an inlet.

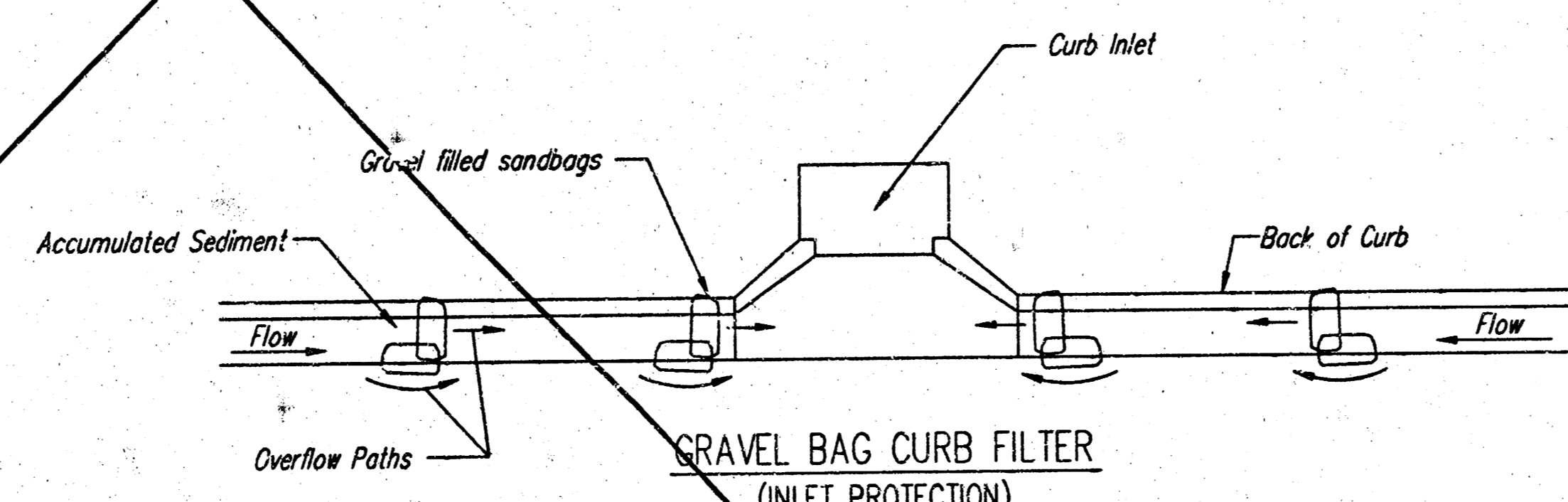
**Maintenance:**

All curb inlet gravel filters shall be inspected and repaired after each runoff event. Sediment deposits are to be removed once material is within 8 cm (3 inches) of the top of any block. Periodically, the gravel shall be raked to increase infiltration and filtering of runoff waters. Accumulated sediment is to be removed immediately from roads and streets.



**CURB INLET SANDBAG FILTERS**  
(INLET PROTECTION)

NOTE: Other types of curb inlet protection may be approved by the City so long as equal protection is provided.



**GRAVEL BAG CURB FILTER**  
(INLET PROTECTION)

NOTE: Place two or more sets of bags in a manner that results in maximum support. The flow line bag must be lower than top of curb.

**CURB SEDIMENT TRAPS**

When inlets are located on streets having a grade (i.e., sump conditions do not exist), installing gravel (or sand) bags in the gutter flow line to create small sediment traps can be considered. Gravel bags are recommended over sand bags to allow for drainage.

If the spacing between bags becomes too large, little sediment may be trapped. Spacing of bags should be completed using the table or graph that illustrates placement distances based upon street slope. When installed in the gutter, bag tops must be lower than the sidewalk.

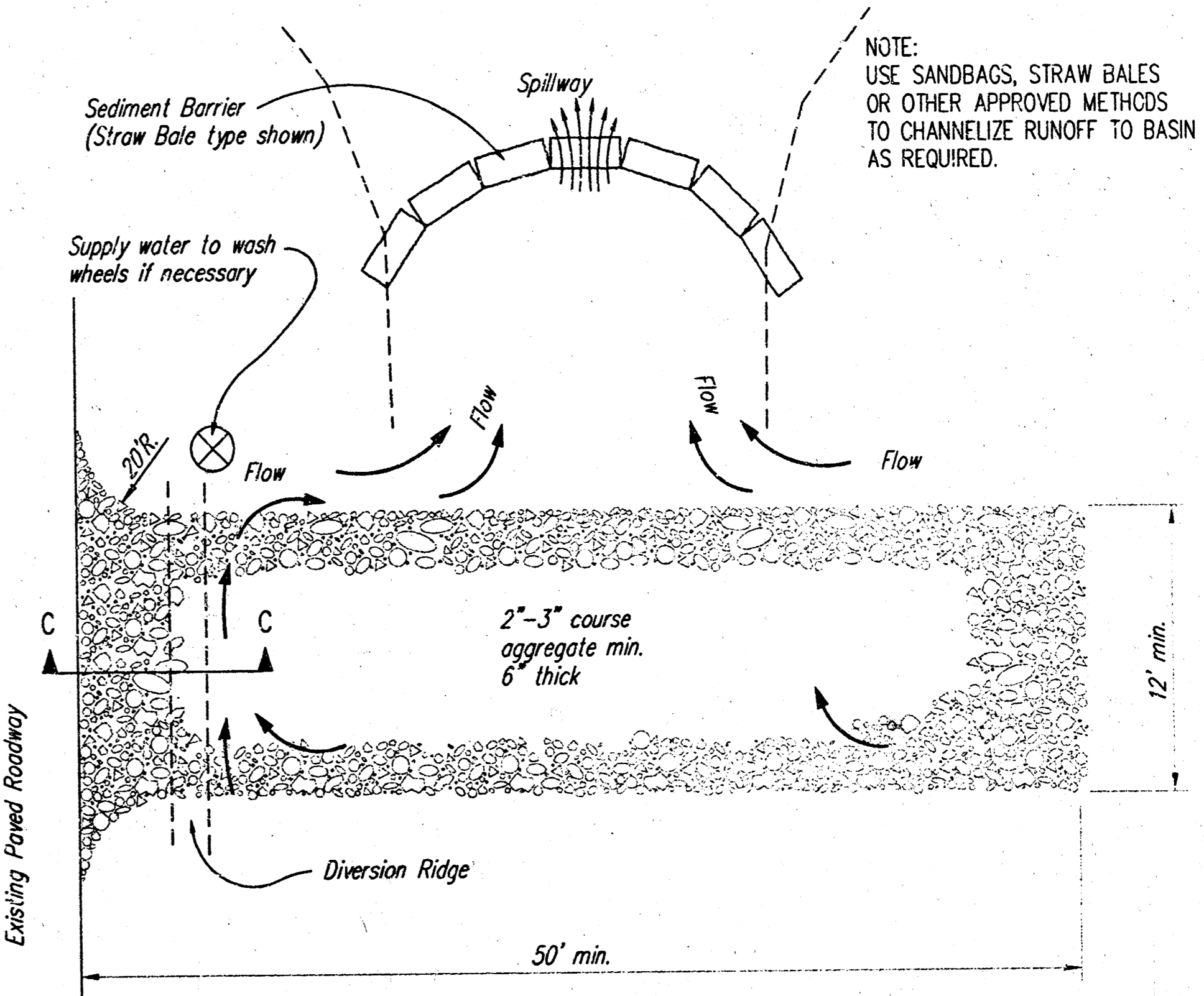
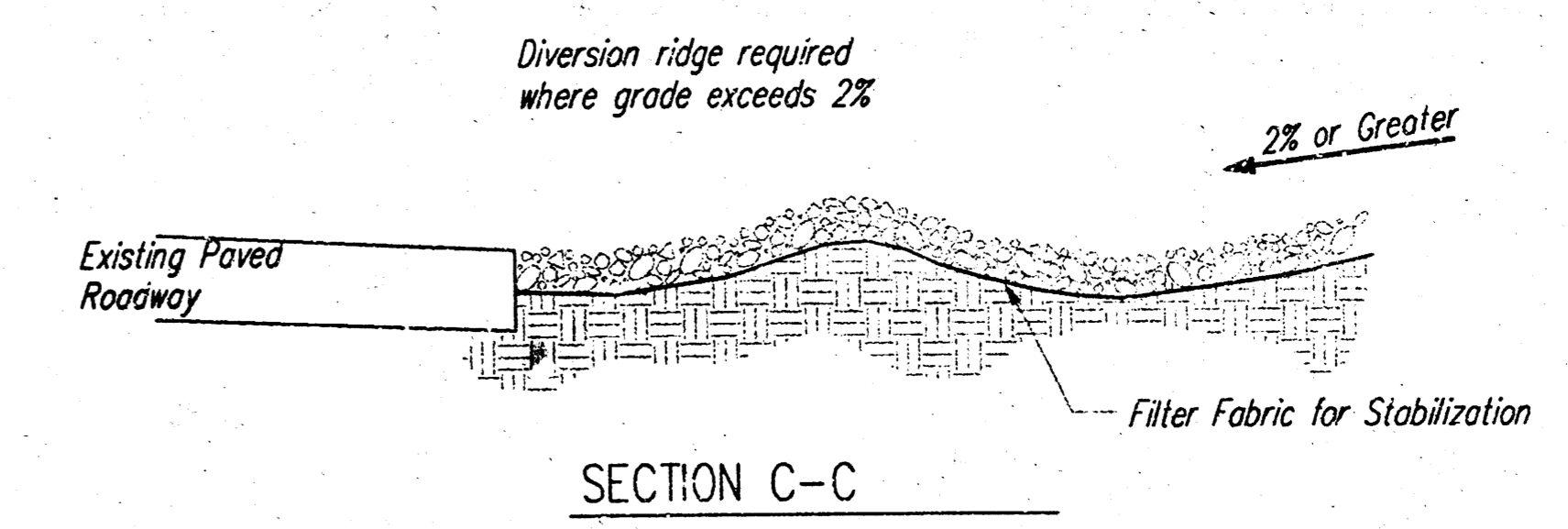
**Spacing:**

Gravel bags are to be placed according to street grades using the following table or graph that appears below.

GRADE (%)	SPACING (FEET)
0.5	75
1.0	45
2.0	18
3.0	12
4.0	9
5.0	6

**Maintenance:**

Collected sediment shall be removed after every runoff event. Bags that are destroyed by vehicular traffic or through natural deterioration are to be immediately replaced.




**STABILIZED CONSTRUCTION ENTRANCE**

**NOTES:**

1. THE ENTRANCE SHALL BE MAINTAINED IN A CONDITION THAT WILL PREVENT TRACKING OR FLOWING OF SEDIMENT ONTO PUBLIC RIGHTS-OF-WAY. THIS MAY REQUIRE TOP DRESSING, REPAIR AND/OR CLEANOUT OF ANY MEASURES USED TO TRAP SEDIMENT.
2. WHEN NECESSARY, WHEELS SHALL BE CLEANED PRIOR TO ENTRANCE ONTO PUBLIC RIGHT-OF-WAY.
3. WHEN WASHING IS REQUIRED, IT SHALL BE DONE ON AN AREA STABILIZED WITH CRUSHED STONE THAT DRAINS INTO AN APPROVED SEDIMENT TRAP OR SEDIMENT BASIN, AS SHOWN ABOVE.
4. DRIVE ENTRANCES ONTO RESIDENTIAL LOTS WILL NOT BE REQUIRED TO HAVE THE SEDIMENT BARRIER SHOWN, BUT WHEEL WASHING MAY BE REQUIRED IF STABILIZED ENTRANCE IS NOT SUFFICIENT TO KEEP MUD FROM BEING TRACKED ONTO ADJACENT STREET. ENTRANCE SHALL EXTEND FROM BACK OF CURB TO DWELLING.

DSNR: DEP OPER: DEP SCALE: 1=1.00 06-05-2001 02:03:06 pm C:\STANDARD\Standards\Wichita\SEBMP\_PEC.DTL\3



**CITY OF WICHITA**

**SOIL EROSION  
BMP DETAILS**

---

CHRISTOPHER M. CARRIER, P.E.  
STORM WATER ENGINEER

OCA NO.

---

PROJECT NUMBER  
468-83296

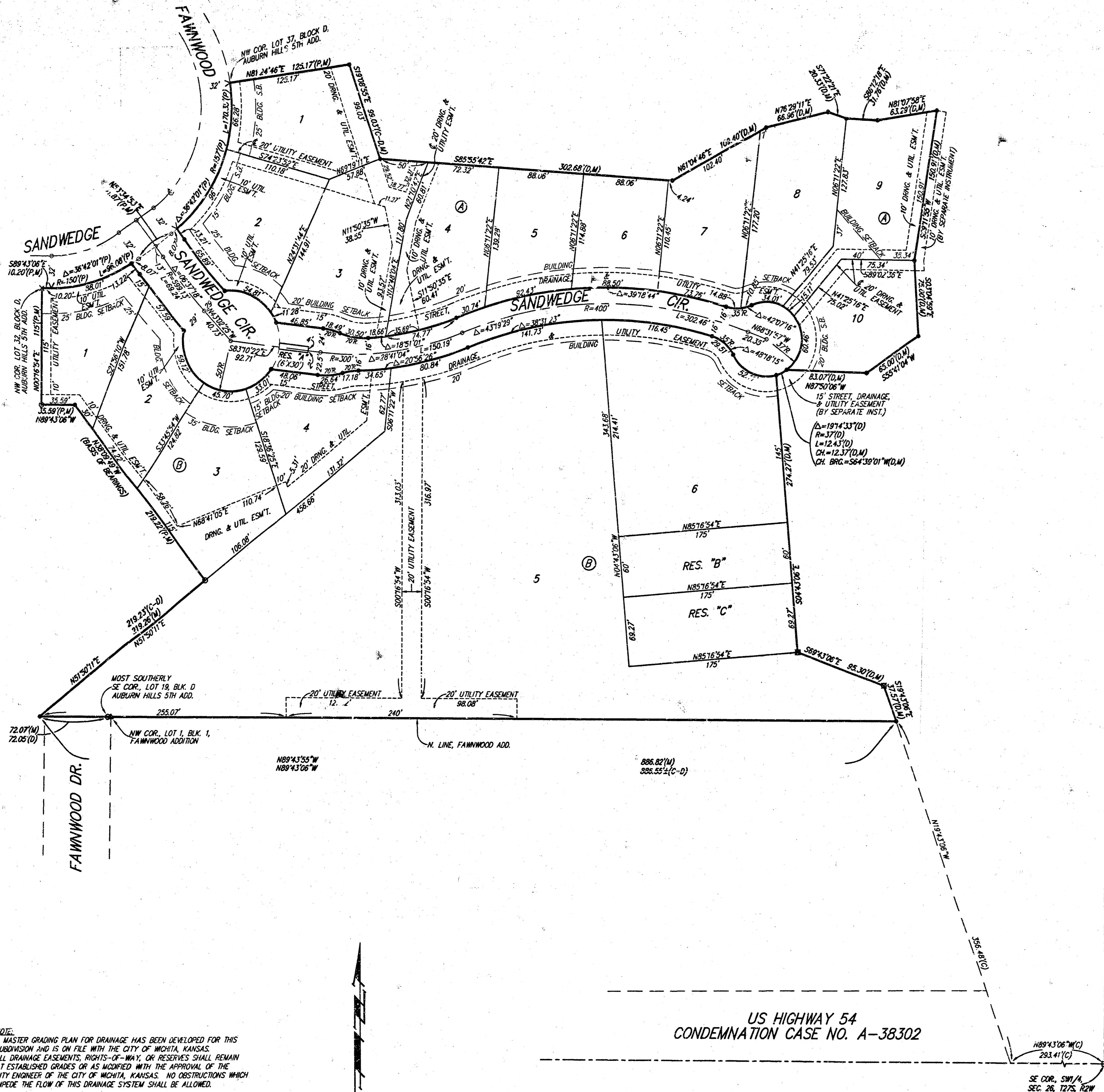
DATE  
7-17-01

---

DATE  
7-17-01

SHEET 6 OF 7

# AUBURN HILLS 11TH ADDITION WICHITA, SEDGWICK COUNTY, KANSAS



US HIGHWAY 54  
CONDEMNATION CASE NO. A-38302

NOTE:  
A MASTER GRADING PLAN FOR DRAINAGE HAS BEEN DEVELOPED FOR THIS SUBDIVISION AND IS ON FILE WITH THE CITY OF WICHITA, KANSAS. ALL DRAINAGE EASEMENTS, RIGHTS-OF-WAY OR RESERVES SHALL REMAIN AT ESTABLISHED GRADES OR AS MODIFIED WITH THE APPROVAL OF THE CITY ENGINEER OF THE CITY OF WICHITA, KANSAS. NO OBSTRUCTIONS WHICH IMPED THE FLOW OF THIS DRAINAGE SYSTEM SHALL BE ALLOWED.

LOT	BLOCK	ELEVATION CITY DATUM
1-10	A	200.6

BENCHMARK:  
TOP OF 1" IRON, 12" DEEP, W/4 COR.  
CITY OF WICHITA, KANSAS

- #4 REBAR W/ "BAUGHMAN" CAP (SET)
- #4 REBAR W/ "BAUGHMAN" CAP (FOUND)
- #6 REBAR IN TRIMBLE (FOUND)
- △ 3/4" IRON BAR (FOUND)
- × CROSS (FOUND)
- ▽ "Y" NOTCH (SET)
- #5 IRON ROD (FOUND)

State of Kansas) SS  
Sedgwick County) The foregoing instrument acknowledged before me, this \_\_\_\_\_ day of \_\_\_\_\_, 2001, by Jay W. Russell, President of Wichita Friends School, Inc., on behalf of the corporation.

State of Kansas) SS  
Sedgwick County) The foregoing instrument acknowledged before me, this \_\_\_\_\_ day of \_\_\_\_\_, 2001, by James R. Perkins, President of Wichita Friends School, Inc., on behalf of the corporation.

My App'l. Exp. \_\_\_\_\_  
Notary Public

State of Kansas) SS

State of Kansas) SS  
Sedgwick County) We, Baughman Company, P.A., Surveyors in and for said county and state do hereby certify that we have surveyed and plotted "AUBURN HILLS 11TH ADDITION", Wichita, Sedgwick County, Kansas and that the accompanying plat is a true and correct exhibit of the property surveyed, described as A replat of all of Lots 32 through 36, inclusive, Block D, Auburn Hills 5th Addition, Wichita, Sedgwick County, Kansas together with that part of Sandwedge Cir. lying between said lots TOGETHER with that part of Lots 19 and 20 in said Block D described as follows: Commencing at the most easterly rear corner of said Lot 20; thence S51°50'11"W along the southeast line of said Lot 20, 78.82 feet to the P.C. of a curve in said southeast line and for a point of beginning; thence continuing S51°50'11"W along the previously described course, as extended southwesterly, 140.41 feet to a point on the south line of said Lot 19; thence S89°43'06"E along the south line of said Lot 19, 72.05 feet to the most southerly SE corner of said Lot 19; thence N00°51'54"E, along the east line of said Lot 19, 10.90 feet to the P.C. of a curve to the right; thence northerly and northeasterly along said curve, having a central angle of 50°58'17" and a radius of 100.00 feet, an arc distance of 88.96 feet, (having a chord length of 88.06 feet bearing N26°21'03"E), to the point of beginning; TOGETHER with that part of the SW 1/4 of Sec. 26, Twp. 27-S, R-2-W of the 6th P.M., Sedgwick County, Kansas described as follows: Commencing at the SE corner of Kellogg Drive as dedicated in Fawnwood Addition; to Sedgwick County, Kansas; thence north along the east line of said Fawnwood Addition, 266.78 feet to the NE corner of said Fawnwood Addition and for a point of beginning; thence west along the north line of said Fawnwood Addition, 519.00 feet to the most southerly SE corner of Lot 19 in said Auburn Hills 5th Addition; thence N00°51'54"E along the east line of said Lot 19, 10.90 feet to the P.C. of a curve to the right; thence northerly and northeasterly along said curve, having a central angle of 50°58'17" and a radius of 100.00 feet, an arc distance of 88.96 feet, (having a chord length of 88.06 feet bearing N26°21'03"E), to the P.T. of said curve; thence N51°50'11"E, 279.89 feet to the P.C. of a curve to the left; thence northeasterly and northerly along said curve, having a central angle of 70°59'05" and a radius of 175.00 feet, an arc distance of 216.81 feet, (having a chord length of 203.21 feet bearing N16°20'38"E), to the P.T. of said curve; thence N19°08'55"W, 103.01 feet; thence S85°55'42"E, 302.68 feet; thence N61°04'46"E, 109.40 feet; thence N76°29'11"E, 66.96 feet; thence S71°22'21"E, 20.33 feet; thence S86°12'18"E, 31.76 feet; thence N81°07'58"E, 63.29 feet; thence S09°11'55"W, 150.91 feet; thence S03°04'59"E, 75.00 feet; thence S55°41'04"W, 65.00 feet; thence N87°50'06"W, 83.07 feet to a point on a curve to the right; thence westerly along said curve, having a central angle of 19°43'33" and a radius of 37.00 feet, an arc length of 12.43 feet, (having a chord length of 12.37 feet bearing S64°39'01"W); thence S04°43'06"E, 274.27 feet; thence S69°43'06"E, 95.30 feet; thence S19°42'36"E, 37.57 feet to the intersection with the north line of said Fawnwood Addition, as extended east; thence west along said extended north line, 293.50 feet, more or less, to the point of beginning.

Existing public easements and dedications being vacated by virtue of K.S.A. 12-512(b).

All being situated in the SW 1/4, Sec. 26, Twp. 27-S, R-2-W of the 6th P.M., Sedgwick County, Kansas.

Baughman Company, P.A.

Know all men by these presents that we, the undersigned, have caused the land in the surveyors certificate to be plotted into Lots, Blocks, Streets, and Reserves, to be known as "AUBURN HILLS 11TH ADDITION", Wichita, Sedgwick County, Kansas. The utility easements are hereby granted as indicated for the construction and maintenance of all public utilities. The drainage and utility easements are hereby granted as indicated for drainage purposes and for the construction and maintenance of all public utilities. The drainage easements are hereby granted as indicated for drainage purposes. The street, drainage, and utility easements are hereby granted as indicated for street related purposes, for drainage purposes and for the construction and maintenance of all public utilities. The streets are hereby dedicated to and for the use of the public. Reserve "A" is hereby reserved for streets, utilities, landscaping, berms, open space, and entry monuments. Reserve "A" shall be owned and maintained by the homeowners association for the addition. Reserves "B" and "C" are hereby reserved for lakes, open space, landscaping, drainage purposes, and berms. Reserve "B" shall be owned and maintained by the owner of Lot 6, Block B. Reserve "C" shall be owned and maintained by the owner of Lot 5, Block B. The Minimum Building Pad Elevations for the lowest opening to the structures shall be as indicated on the face of the plat.

West Wichita Development, Inc.  
Jay W. Russell, President

Wichita Friends School, Inc.  
James R. Perkins, President

Doris M. Rishel Trust u/t/a dated September 14, 2000  
Doris M. Rishel, Trustee  
Howard A. Rishel, Trustee

This plat of "AUBURN HILLS 11TH ADDITION", Wichita, Sedgwick County, Kansas has been submitted to and approved by the Wichita-Sedgwick County Metropolitan Area Planning Commission, Wichita, Kansas.  
Dated this \_\_\_\_\_ day of \_\_\_\_\_, 2001.  
Wichita-Sedgwick County Metropolitan Area Planning Commission

J. D. Michaels, Acting Chair  
Marvin S. Krout, Secretary

This plat approved and all dedications shown hereon accepted by the City Council of the City of Wichita, Kansas, this \_\_\_\_\_ day of \_\_\_\_\_, 2001.  
At the direction of the City Council

Chris Cherches, City Manager  
Pat Burnett, City Clerk

Reviewed in accordance with K.S.A. 58-2005 on this \_\_\_\_\_ day of \_\_\_\_\_, 2001.

Tricia L. Rubello, L.S. #1246  
Deputy County Surveyor  
Sedgwick County, Kansas

Entered on transfer record this \_\_\_\_\_ day of \_\_\_\_\_, 2001.

Don Broce, County Clerk

State of Kansas) SS  
Sedgwick County) This is to certify that this plat has been filed for record in the office of the Register of Deeds, this \_\_\_\_\_ day of \_\_\_\_\_, 2001 at \_\_\_\_\_ o'clock \_\_\_\_\_ M., and is duly recorded.

Bill Meek, Register of Deeds  
Linda Kizzire, Deputy

We the undersigned holders of a mortgage on the above described property, do hereby consent to this plat of "AUBURN HILLS 11TH ADDITION", Wichita, Sedgwick County, Kansas.  
Legacy Bank

State of Kansas) SS  
Sedgwick County) The foregoing instrument acknowledged before me, this \_\_\_\_\_ day of \_\_\_\_\_, 2001, by \_\_\_\_\_ of Legacy Bank, on behalf of the bank.

My App'l. Exp. \_\_\_\_\_  
Notary Public

We the undersigned holders of a mortgage on the above described property, do hereby consent to this plat of "AUBURN HILLS 11TH ADDITION", Wichita, Sedgwick County, Kansas.  
Intrust Bank, N.A.

State of Kansas) SS  
Sedgwick County) The foregoing instrument acknowledged before me, this \_\_\_\_\_ day of \_\_\_\_\_, 2001, by \_\_\_\_\_ of Intrust Bank, N.A., on behalf of the bank.

My App'l. Exp. \_\_\_\_\_  
Notary Public

State of Kansas) SS  
Sedgwick County) The foregoing instrument acknowledged before me, this \_\_\_\_\_ day of \_\_\_\_\_, 2001, by Curtis Bryant, President of Heartland Friends Meeting of the Religious Society of Friends, Inc., on behalf of the corporation.

18-13-05-10