

# SANITARY SEWER LAT. 37, MAIN 12, SOUTHWEST INTERCEPTOR SEWER

TO SERVE A PART OF

## SUNRIDGE 2ND ADDITION TO SEDGWICK COUNTY, KANSAS

CITY OF WICHITA, KANSAS  
M.E. LINDEBAK CITY ENGINEER

CITY PROJECT NO. 468-76-245-82487-000-000-001  
INDEX NO. 742536

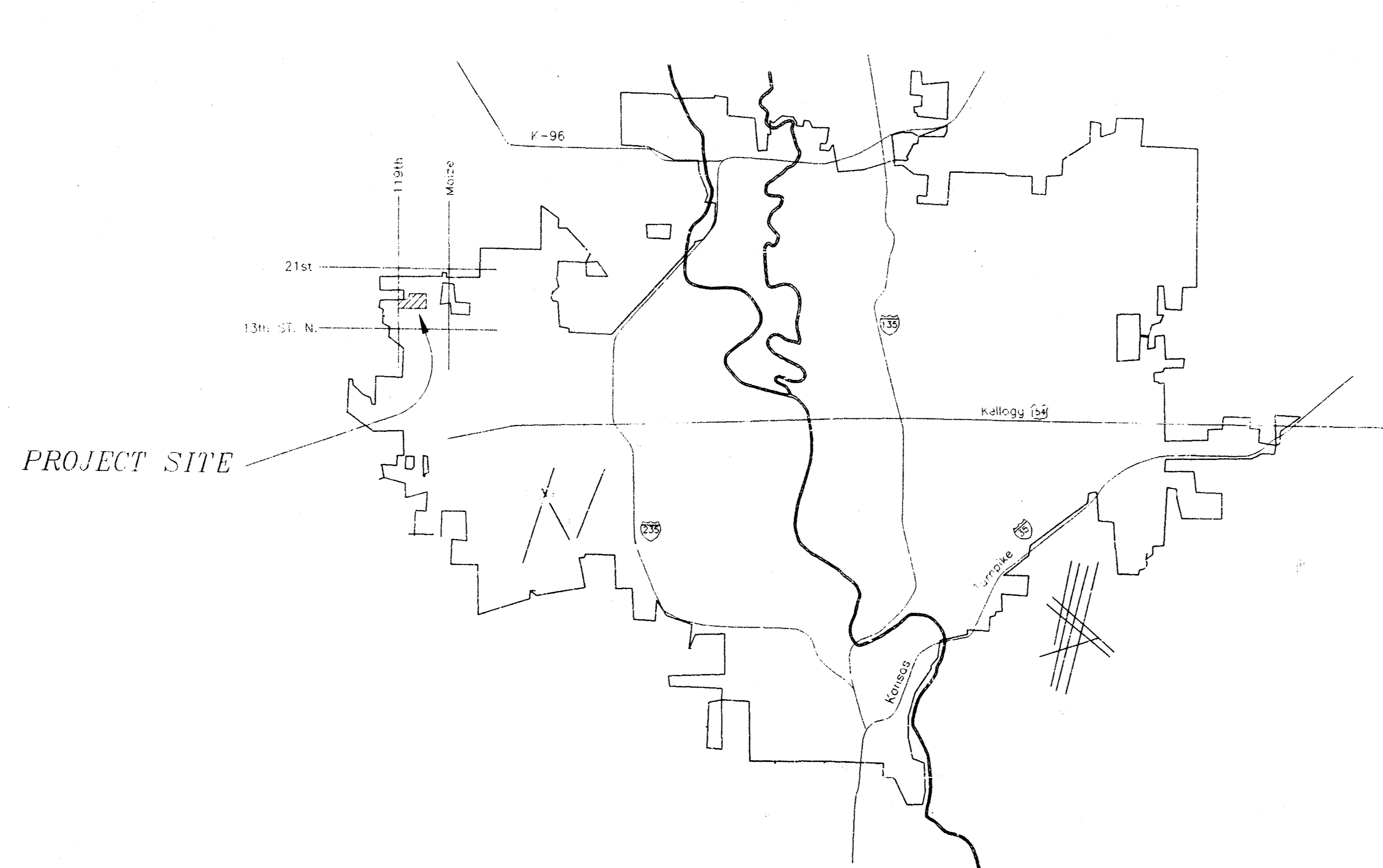
January 1996

IMPROVEMENT DISTRICT DESCRIPTION  
LOTS 2 THROUGH 14 INCLUSIVE, BLOCK 1  
IN SUNRIDGE 2ND ADDITION

### NOTES

- THE CONTRACTOR WILL BE REQUIRED TO PROVIDE ADVANCE NOTICE OF TWENTY-FOUR (24) HOURS TO UTILITY COMPANIES PRIOR TO STARTING ANY EXCAVATION AS FOLLOWS:  
KANSAS ONE-CALL 887-2470  
THE CONTRACTOR MUST NOTIFY THE FOLLOWING IN CASE OF EMERGENCY:  

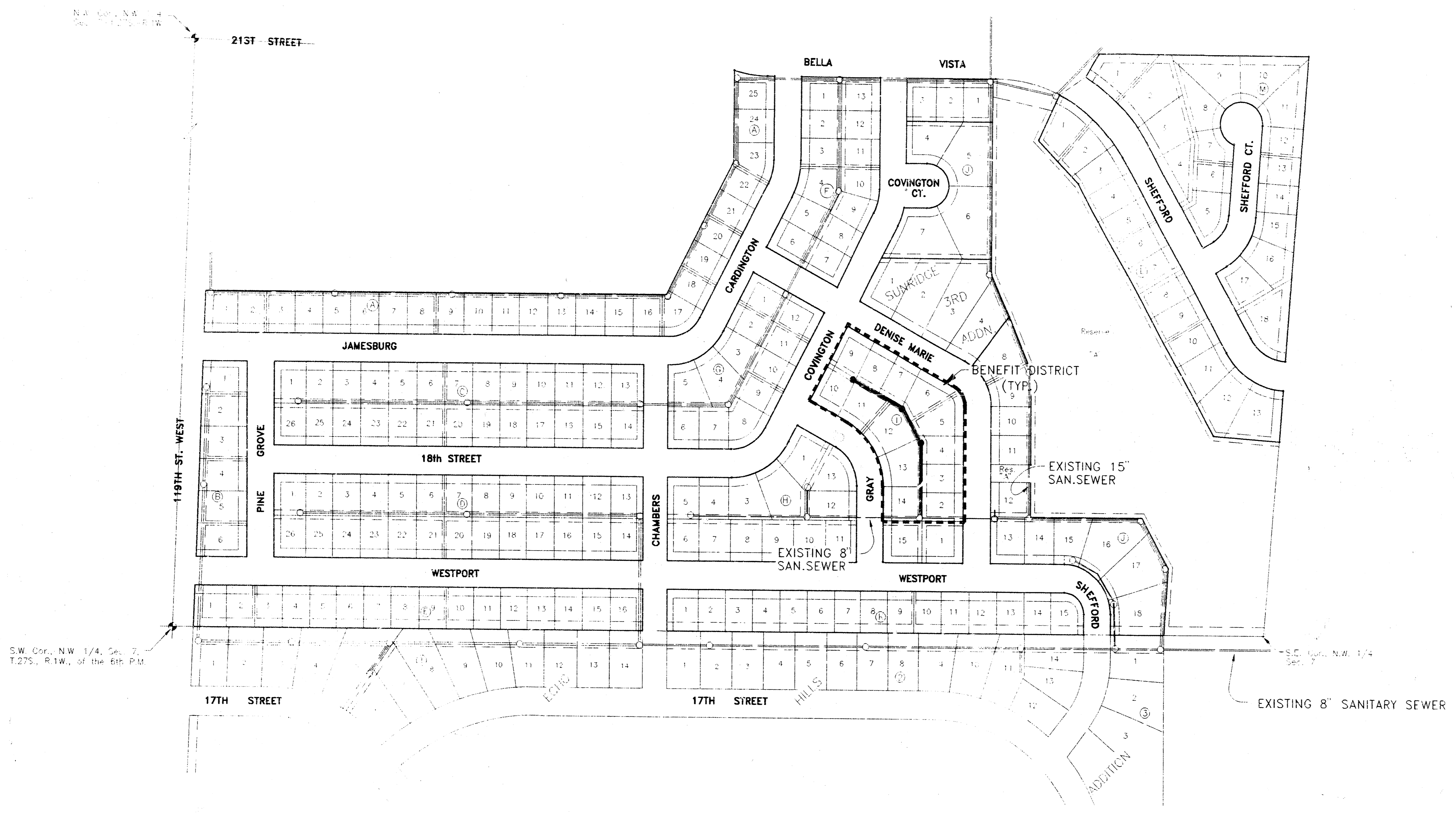
CABLEVISION	262-4270 OR 263-2061
KANSAS GAS & ELECTRIC (GAS)	263-7511
KANSAS GAS & ELECTRIC (ELECTRIC)	264-1141
ARKLA GAS COMPANY	942-8350 OR 263-8161
SOUTHWESTERN BELL TELEPHONE	1-571-2611
CITY OF WICHITA WATER DEPT.	268-4908
CITY OF WICHITA SEWER MAINTENANCE	268-4071
- THE CONTRACTOR SHALL BE RESPONSIBLE FOR PROPERTY IRONS. THE CONTRACTOR WILL BE REQUIRED TO RE-ESTABLISH ANY PROPERTY IRONS WHICH ARE DAMAGED OR DESTROYED BY HIS CONSTRUCTION OPERATIONS. SUCH IRONS SHALL BE RE-ESTABLISHED BY A LICENSED LAND SURVEYOR IN ACCORDANCE WITH STATE LAWS.
- UNLESS OTHERWISE SPECIFIED ON THE PLANS, MANHOLES MAY BE TYPE "B", "C", OR "D" MANHOLES. MANHOLES SHALL BE CONSTRUCTED IN ACCORDANCE WITH THE STANDARD SPECIFICATIONS AND THE STANDARD DETAIL DRAWINGS.
- TRAFFIC WILL NOT BE AFFECTED IN THIS AREA OF CONSTRUCTION.
- CONTRACTOR SHALL PROVIDE POSITIVE DRAINAGE AWAY FROM ALL MANHOLE COVERS.
- CONTRACTOR SHALL GRADE THE SANITARY SEWER ALIGNMENT TO THE PROFILE AND ELEVATION SHOWN ON THE EASEMENT GRADING PLAN. ALL DISTURBED AREAS TO BE RESEEDED USING TEMPORARY RYE GRASS AT A RATE OF 4 LBS. PER 1000 SQ. FT. WITHIN 14 DAYS UPON PROJECT COMPLETION. CONTRACTOR SHALL PREPARE GROUND AS PER CITY SPECIFICATIONS. ALL COSTS FOR GRADING AND SEEDING SHALL BE PAID AS EASEMENT GRADING.



### INDEX

- Cover Sheet
- Key Map
- Easement Grading Plan / Plat
- Plan & Profile

MOEHRING & ASSOCIATES  
CONSULTING ENGINEERS  
WICHITA



N  
1" = 150'

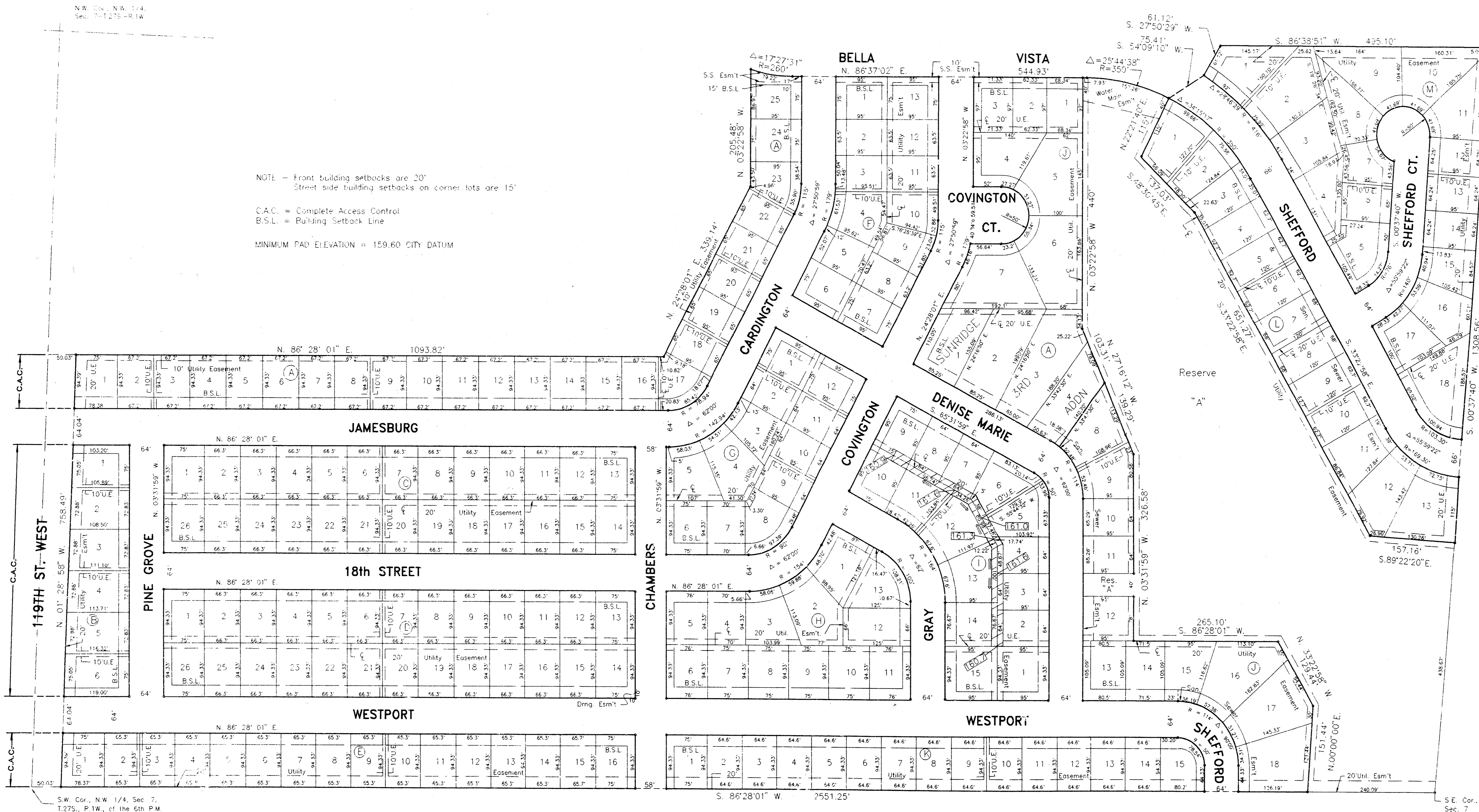
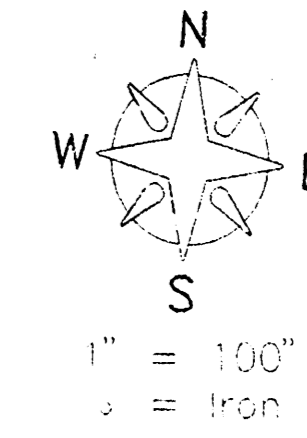
**BENCHMARKS**

1. City Disc - 79' South and 46' East of NW Cor., NW 1/4, Sec. 7, T27S, R1W. Elev. = 172.08 City Datum
2. Top of Curb, E. Side Chambers, opposite SW Cor. Lot 1, Blk. "K", Sunridge 2nd Addition. Elev. = 161.19 City Datum
3. Top of Curb, W. Side Chambers, opposite SE Cor., Lot 13, Blk. "C", Sunridge 2nd Addition. Elev. = 161.18 City Datum
4. R.R. Spike in U.P., approx. 200' South of NW Prop. Cor. Elev. = 167.02 City Datum
5. Top of Curb, E. Side Pine Grove, opposite SW Cor., Lot 1, Blk. "C", Sunridge 2nd Addition. Elev. = 166.30 City Datum

<b>SEWER LINE KEY MAP</b>	
MOEHRING & ASSOCIATES CONSULTING ENGINEERS - SURVEYORS 433 S. HYDRAULIC WICHITA, KS. (316) 263-8291	
PROJECT NO. 468-76-245-53457-000-000-001	DATE DECEMBER 1995
SHEET 2 OF 4	

# SUNRIDGE 2ND ADDITION

## WICHITA, SEDGWICK COUNTY, KANSAS

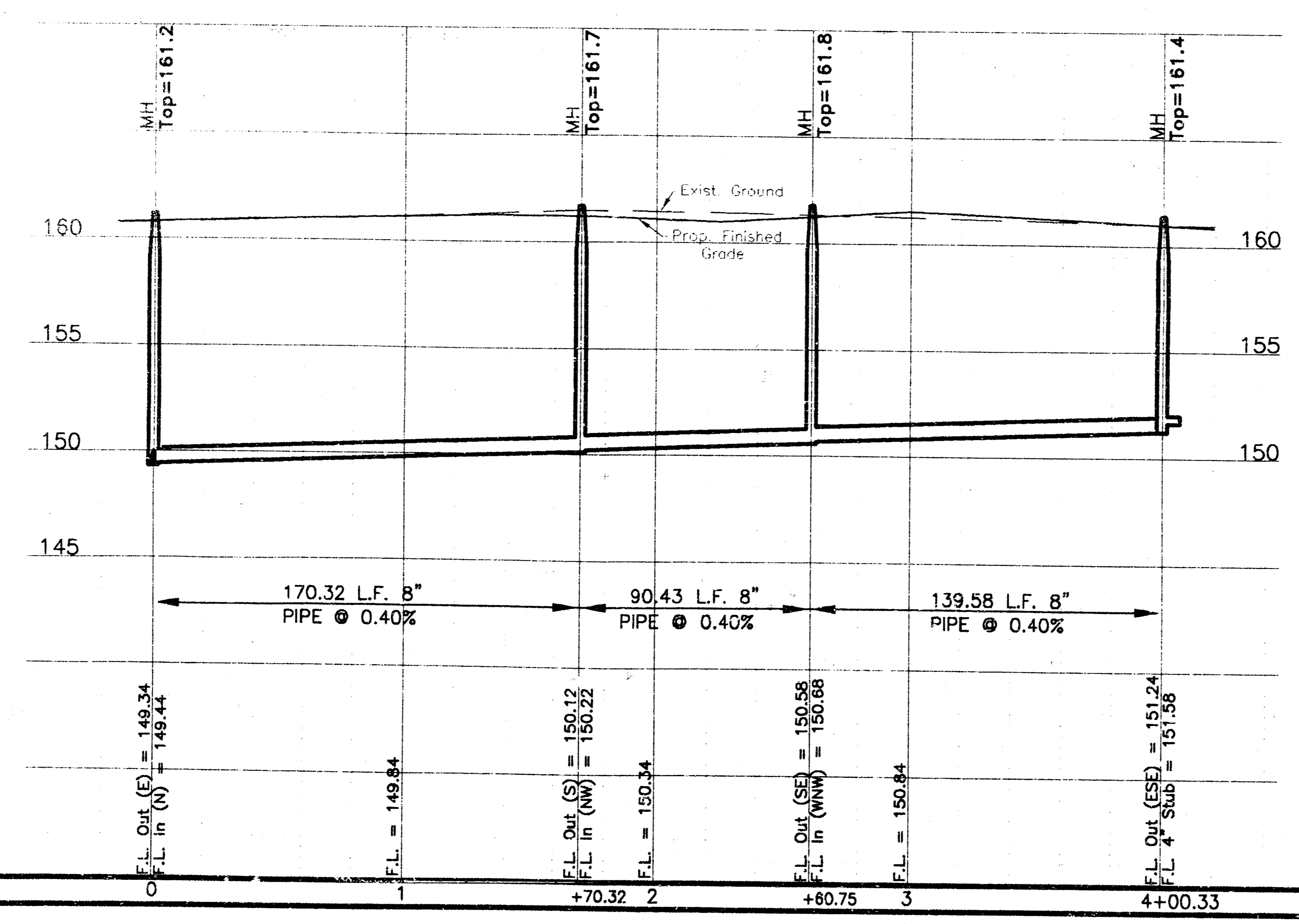
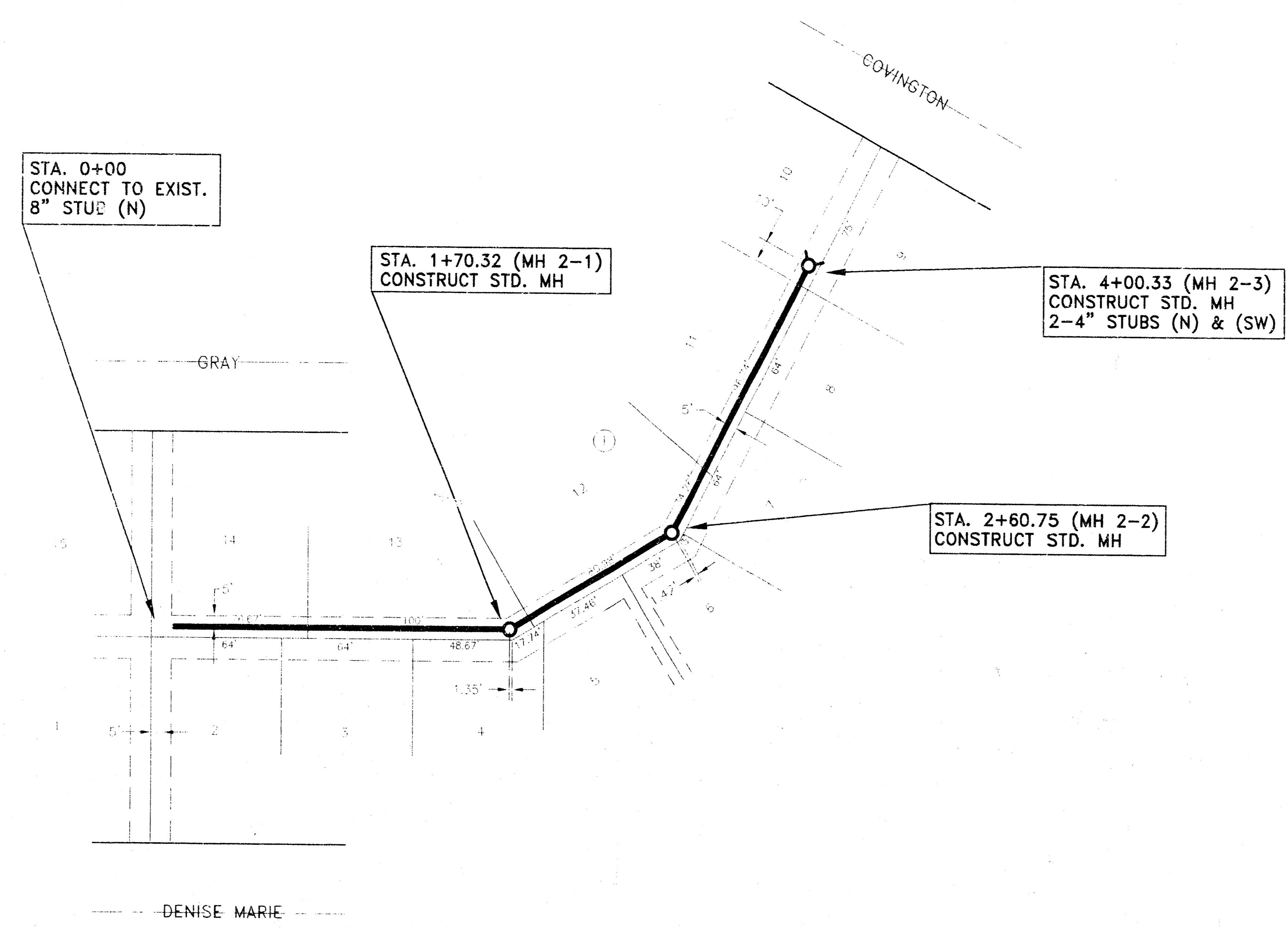


EASEMENT GRADING PLAN / PLAT

MOHRING & ASSOCIATES  
CONSULTING ENGINEERS - SURVEYORS  
433 S. HYDRAULIC WICHITA, KS.  
(316) 263-8291

PROJECT NO. 463-75-245-82487-000-000-001  
DATE DECEMBER, 1995 SHEET 3 OF 4

1" = 40' Horiz.  
1" = 5' Vert.



PLAN & PROFILE

**MOEHRING & ASSOCIATES**  
CONSULTING ENGINEERS - SURVEYORS

433 S. HYDRAULIC WICHITA, KS  
(316) 263-8291

PROJECT NO. 468-76-245-R2487-000-000-001  
DATE: DECEMBER, 1995 SHEET 4 OF 4