
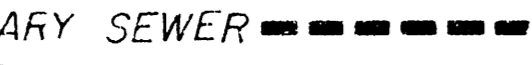
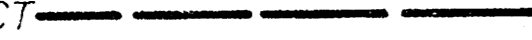


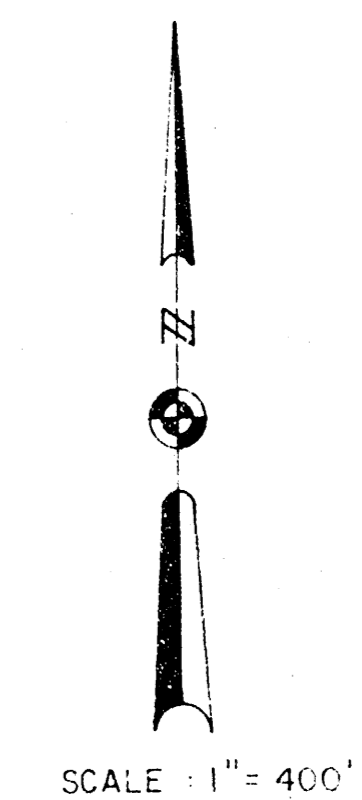
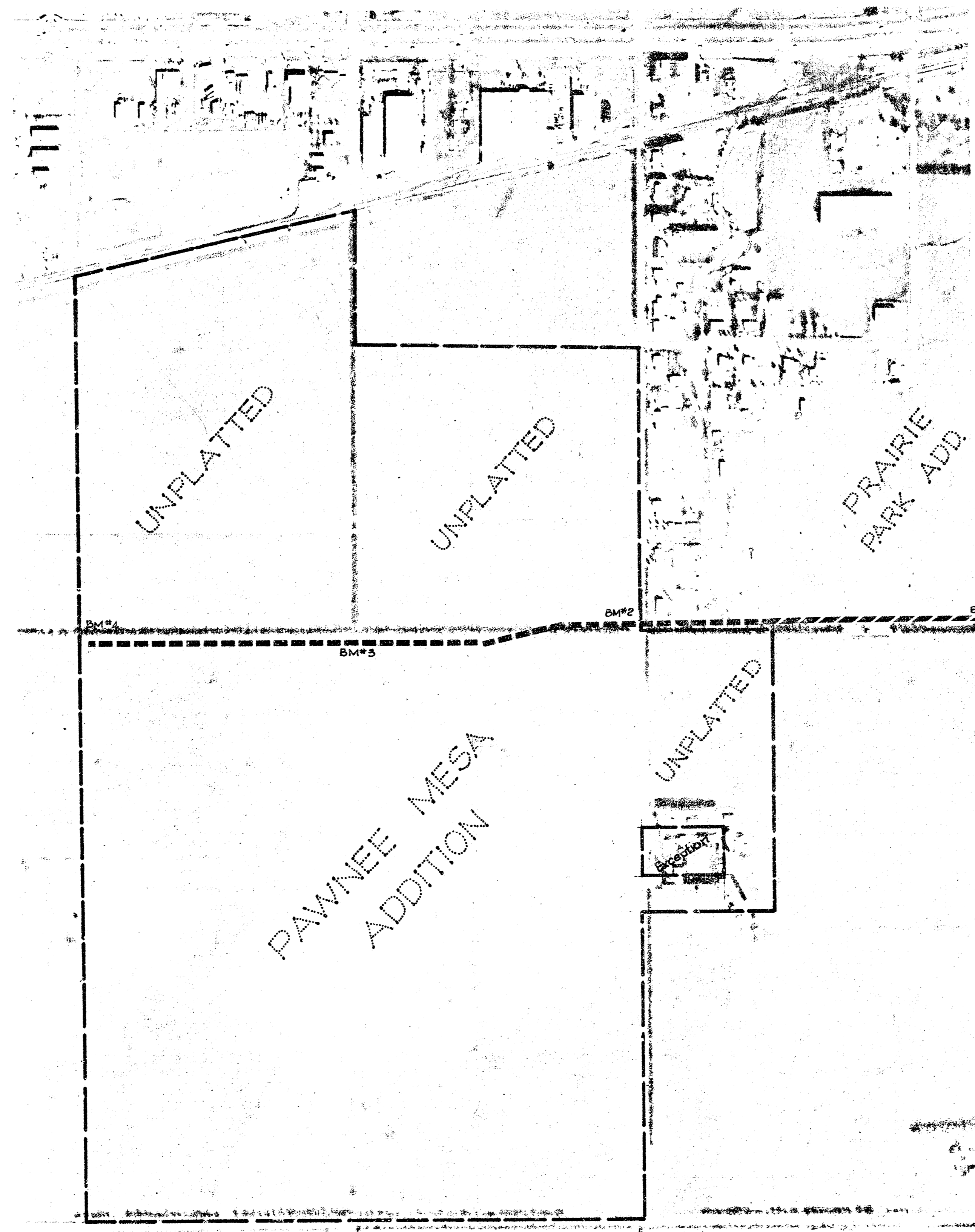
MAIN 13, S.W. INTERCEPTOR SEWER

PROJECT NO.

468-76-245-80932-000-000-001

CITY OF WICHITA, KANSAS
DEAN SELLERS, ACTING CITY ENGINEER

LEGEND
EXISTING SANITARY SEWER 
PROPOSED SANITARY SEWER 
BENEFIT DISTRICT 



SCALE: 1" = 400'

INDEX TO DRAWINGS

SHEET NO.	DESCRIPTION
1	TITLE SHEET
2-4	PLAN & PROFILE
5-7	DETAILS

[Faint, illegible text, likely a disclaimer or notes section.]

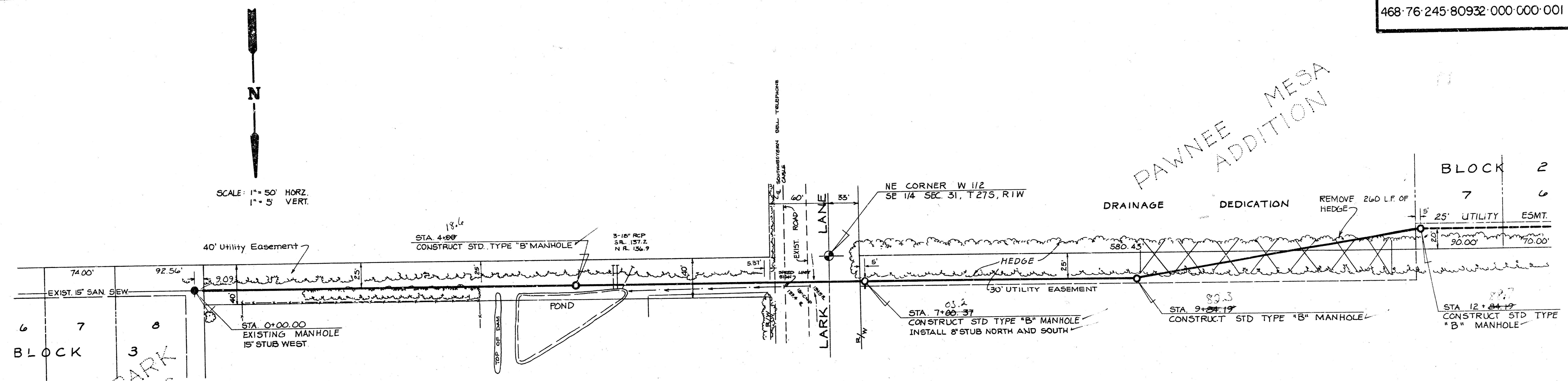


Van Doren - Hazard - Stallings
Engineers - Planners
Topeka Wichita Minneapolis

Sheet **1**
1/4

PROJECT NO. :
468-76-245-80932-000-000-001

PAWNEE MESA
ADDITION

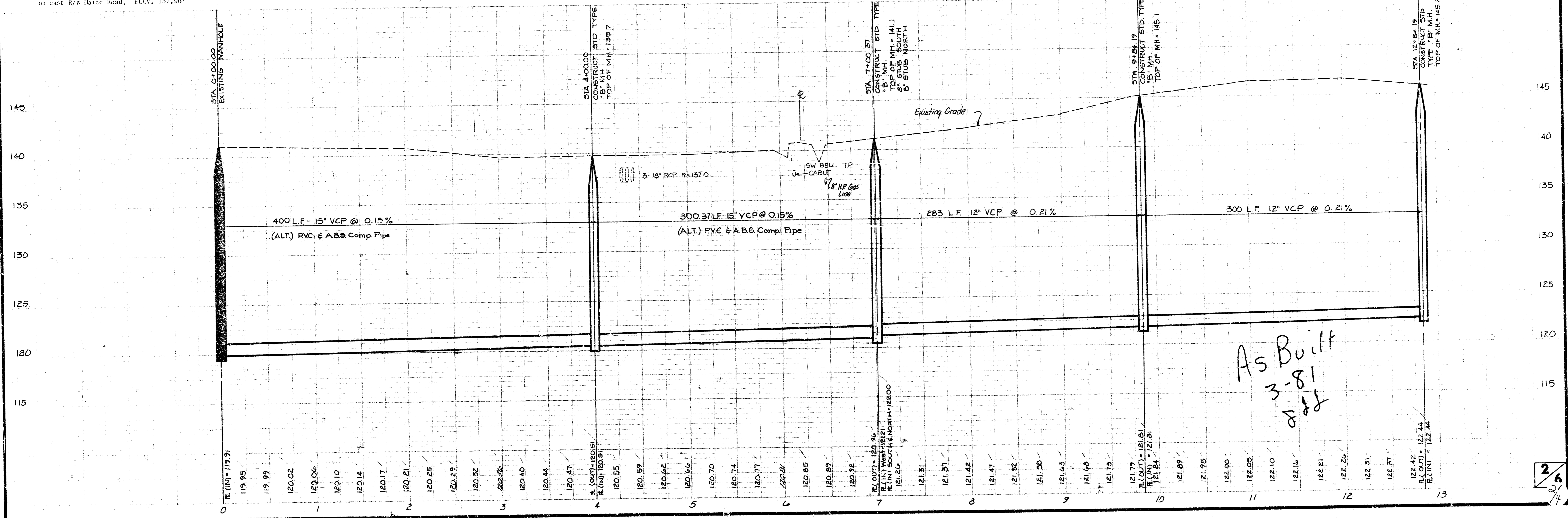


PRAIRIE PARK
ADDITIONS

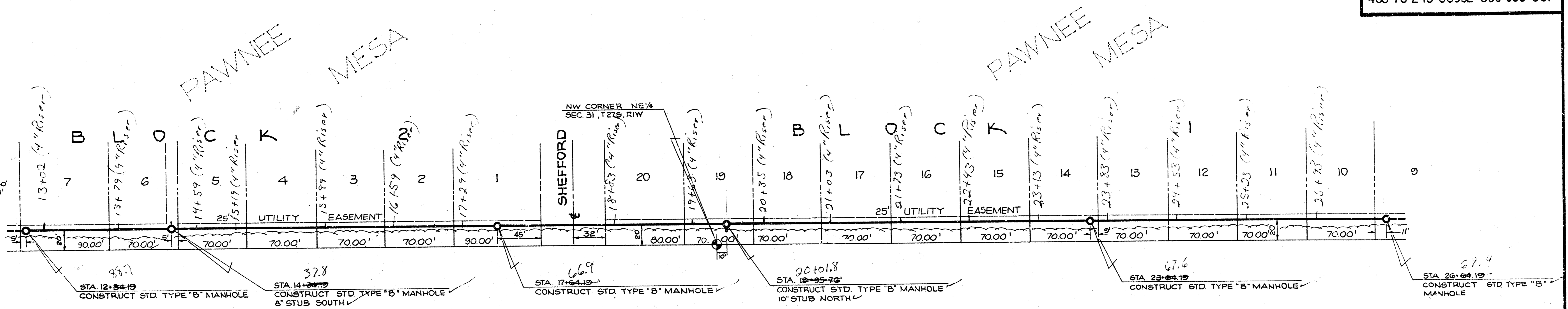
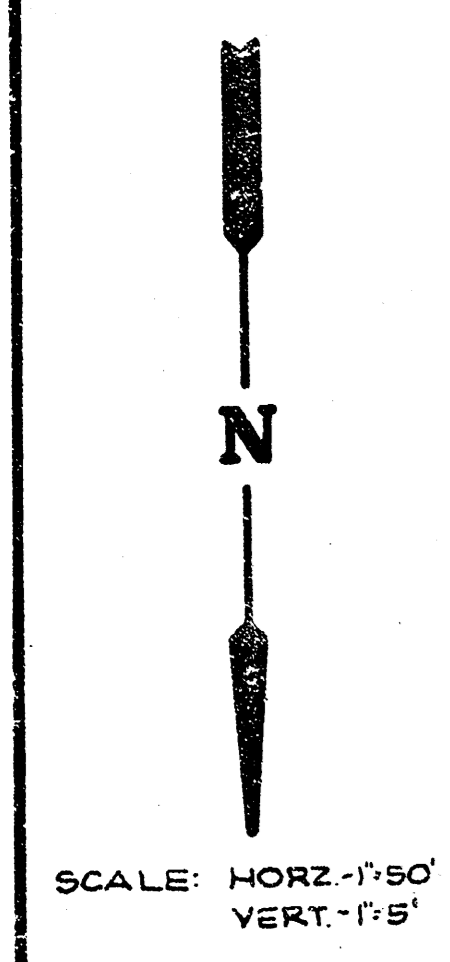
NOTE: REMOVAL AND REPLACEMENT OF 15" PIPE AT STATION 4 + 50 SHALL BE CONSIDERED AS SUBSIDIARY TO THE OTHER ITEMS OF WORK.

Bench Mark # 1
RR Spike in west face of 2nd PP north of NE 1/4 Cor. of SE 1/4 of Sec. 31-27S-1W on east R/W Maize Road, ELEV. 157.96'

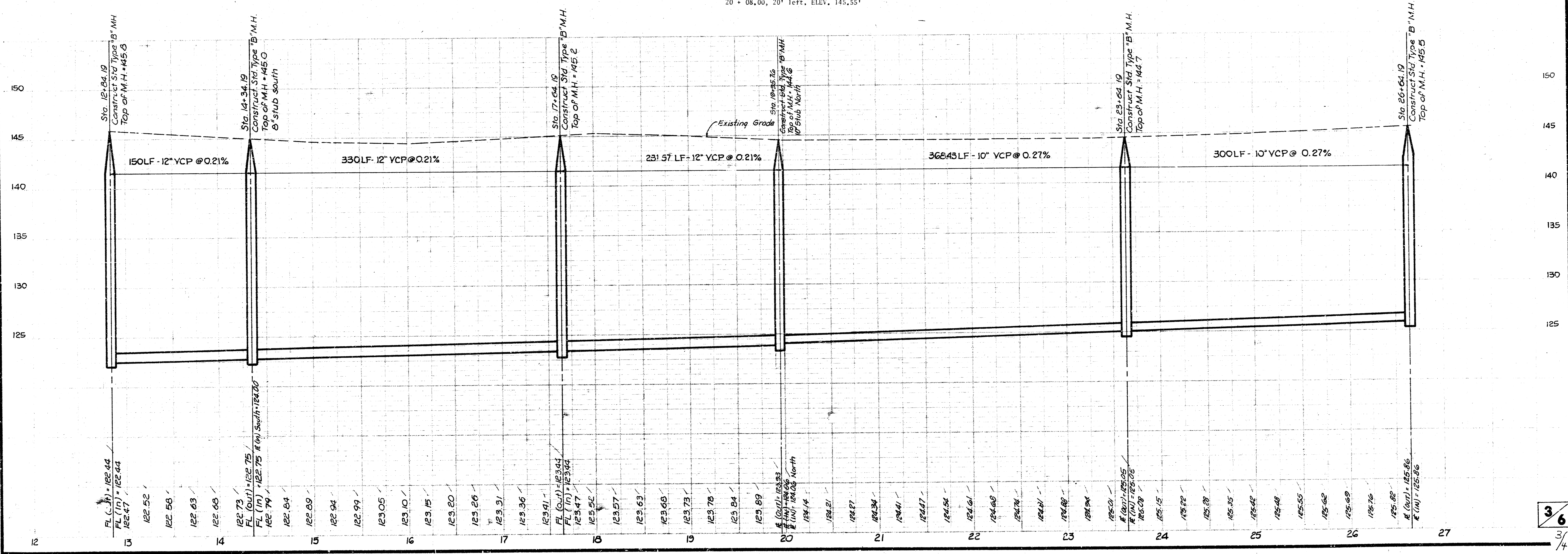
Bench Mark # 2
Bent Spike in south face of hedge tree at 7 + 25.00, 25' left, ELEV. 142.30'



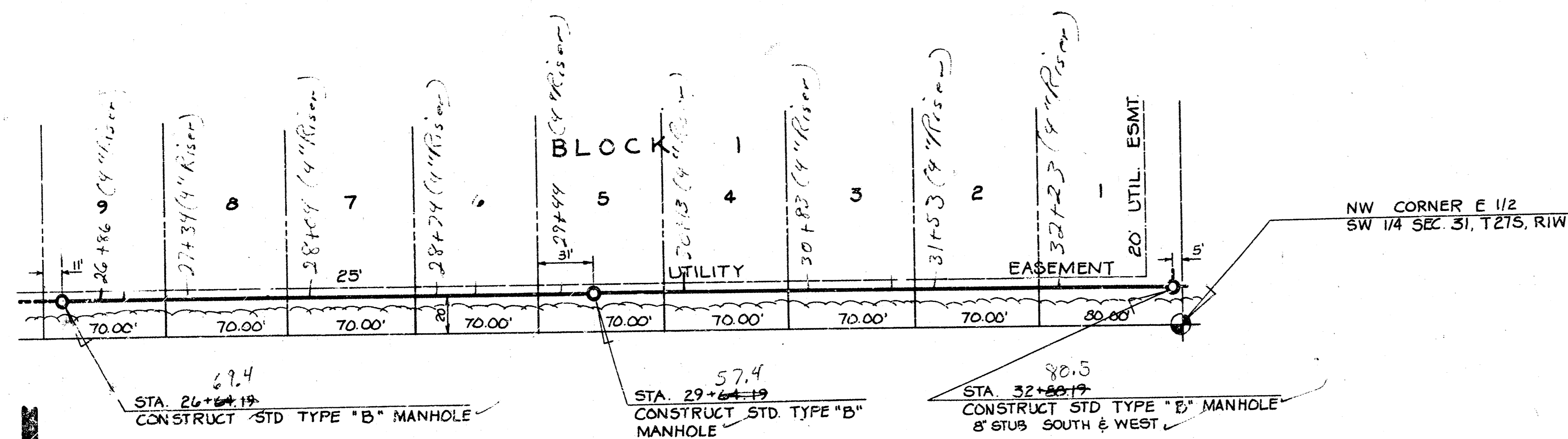
PROJECT NO:
468-76-245-80932-000-000-001



Bench Mark # 3
Top Nail in south face of hedge tree at
20 + 08.00, 20' left. ELEV. 145.55'



PROJECT NO:
468-76-245-80932-000-000001



SCALE: 1" = 50' HORZ.
1" = 5' VERT.

Bench Mark # 4
RR Spike in south face of hedge tree at
32 + 25.00, 20' right, ELEV. 145.31

