

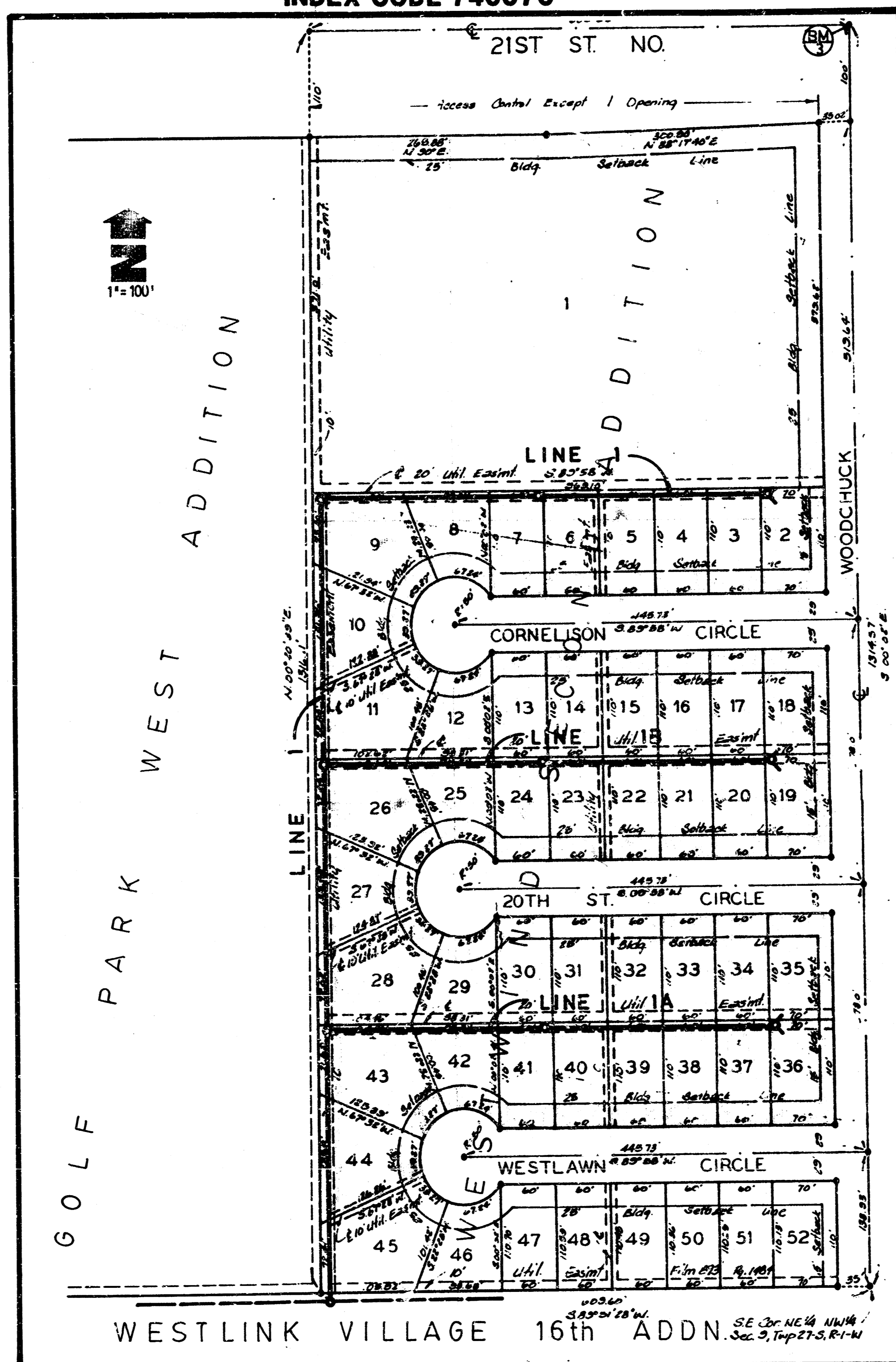
SANITARY SEWER IMPROVEMENTS
FOR
LATERAL 5, MAIN 15, S.W. INTERCEPTOR

LOTS 1 THROUGH 44, INCLUSIVE, WESTWIND SECOND ADDITION

PROJECT NO. 468-76-245-81815-000-000-001
INDEX CODE 740076

GENERAL NOTES

1. Underground utility service lines and overhead utility pole lines are to be adjusted as necessary by others prior to construction unless the plans specifically call for their adjustment by the Contractor or unless the plans specifically identify a utility to be adjusted by its owner during construction. Existing utilities and their location, as shown on the plans, represent the best information obtainable for design. The Contractor will be required to work around existing utilities within the right-of-way which do not conflict with proposed construction.
2. The Contractor shall give all property owners and/or tenants of developed property abutting the construction of this project a minimum of ten (10) days advance notice prior to start of construction.
3. The Contractor shall be responsible for preserving property irons. The Contractor will be required to re-establish any property irons which are damaged or destroyed by his construction operations. Such irons shall be re-established by a licensed land surveyor in accordance with state laws.



□ BENEFIT DISTRICT

CITY of WICHITA, KANSAS

MICHAEL E. LINDEBAK
CITY ENGINEER

INDEX of SHEETS

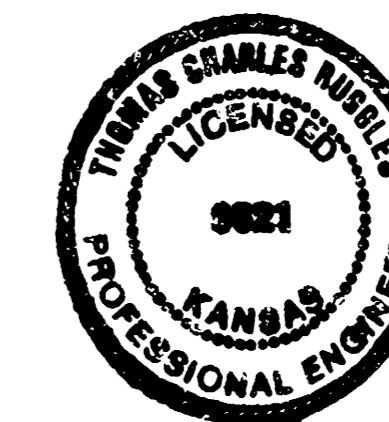
1. TITLE SHEET
- 2-3. PLAN/PROFILE LINE - 1
4. PLAN/PROFILE LINE-1A
5. PLAN/PROFILE LINE-1B
6. MANHOLE DETAIL SHEET
7. PLAT COPY

BENCHMARKS

1. R.R. Spike in "lone" tree (NE-ly side) 193 ft. S., 47 ft. W., NE Cor. Lot 15, Blk. 2 Westlink Vill. 16th Addn. Elev. = 157.75 City datum
2. "d" Cut SW. Cor. of catch basin, E. End of NE Return of 19TH ST. at Woodchuck. Elev. = 155.11 City datum
3. Top of Iron in Thimble NE Cor. NW1/4, Sec. 9, T-27S, R-1-W. (Intersection 21st ST. at Woodchuck.) Elev. = 162.70 City datum

*BUILT PER PLAN
RPL
2-90*

Rev. 3/11/89 - stubs: Errors Rectified
JULY 7, 1989



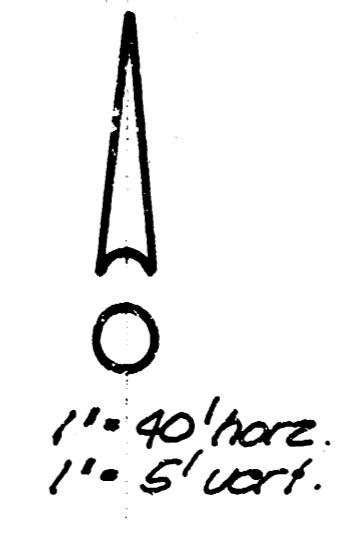
TITLE SHEET

BAUCHMAN COMPANY, P.A. SURVEYING & ENGINEERING 310283-7271 • 315 ELLIS • WICHITA, KANSAS 67211				
Drawn: Ruggles	Checked: Sonny	Approved: ML	Date: Apr. 89	Sheet: 1 of 7

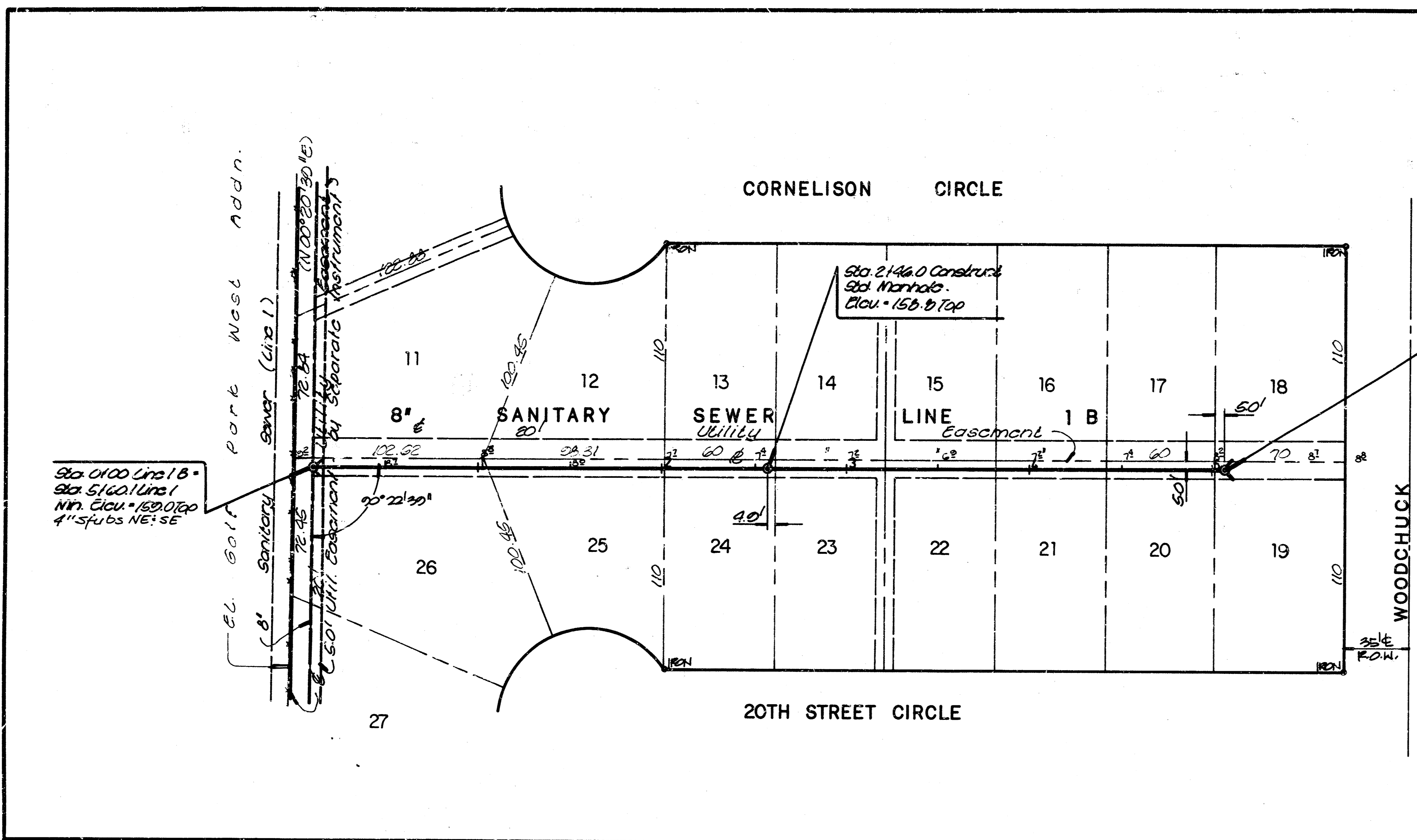
FILMED FROM THE BEST AVAILABLE COPY

BENCHMARKS

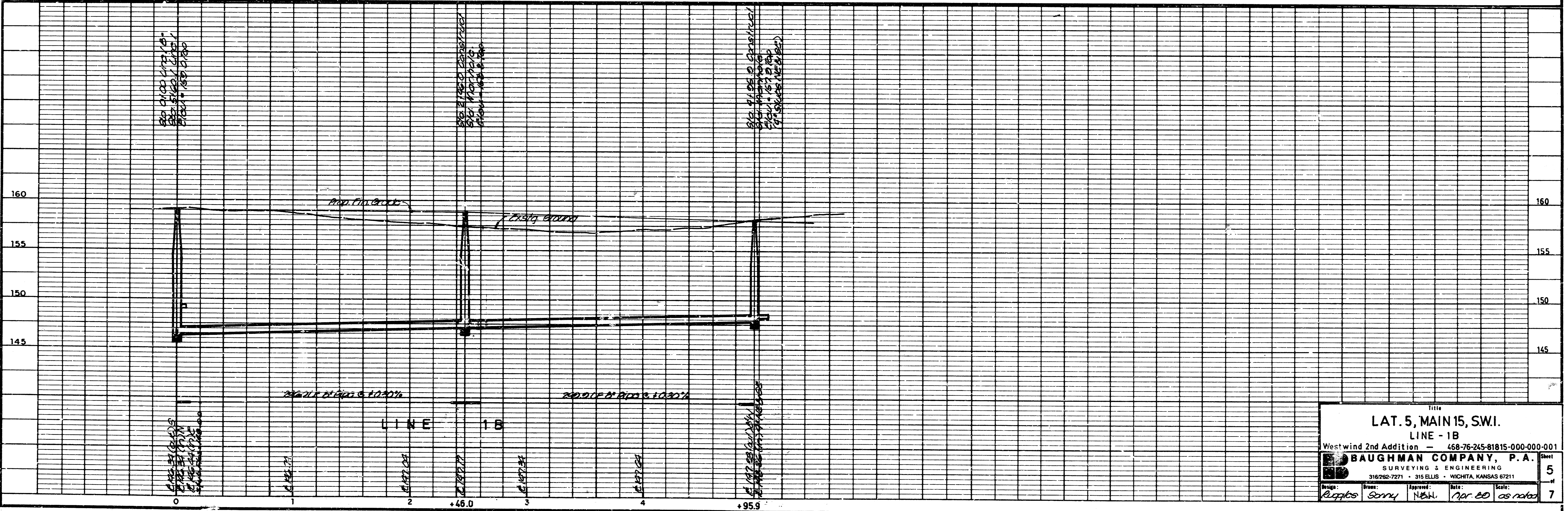
1. R.R. Spike in "lone" tree (NE-ly side) 193 ft. S. 47 ft. W. NE Cor. Lot 15, Blk. 2 West Link Vill. 16TH Addn. Elev. = 157.75 City datum
2. "a" Cut SW Cor. of catch basin, E. End of NE Return of 19TH ST. at Woodchuck. Elev. = 155.11 City datum
3. Top of Iron in Thimble NE Cor. NW 1/4, Sec. 9, T-27-S, R-1-W. (Intersection 21st ST. at Woodchuck.) Elev. = 162.70 City datum



DATE	
BY	
REVISION	
NO.	
PLAN	
NOTE BOOK	
NO.	



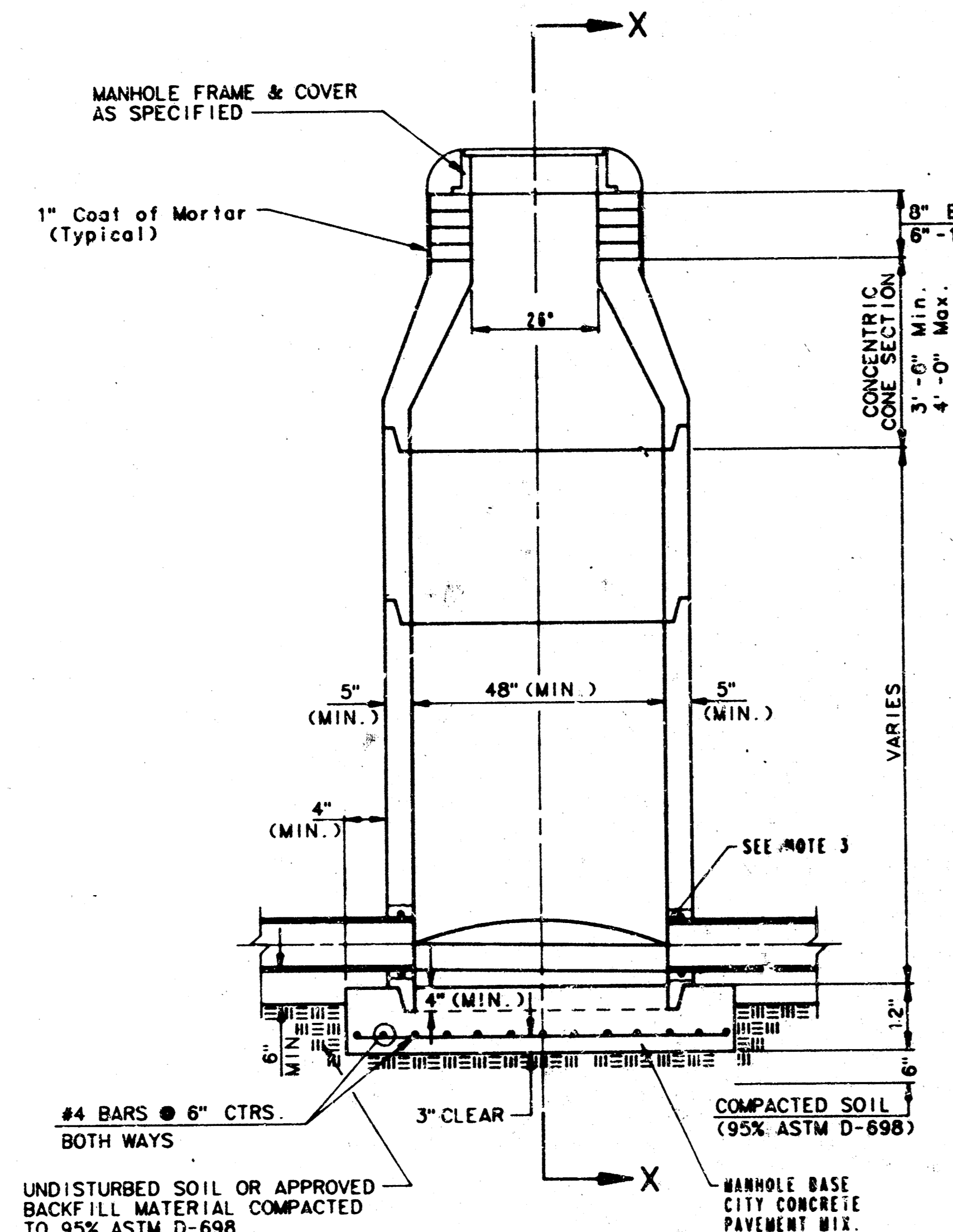
DATE	
BY	
REVISION	
NO.	
PROFILE	
NOTE BOOK	
NO.	



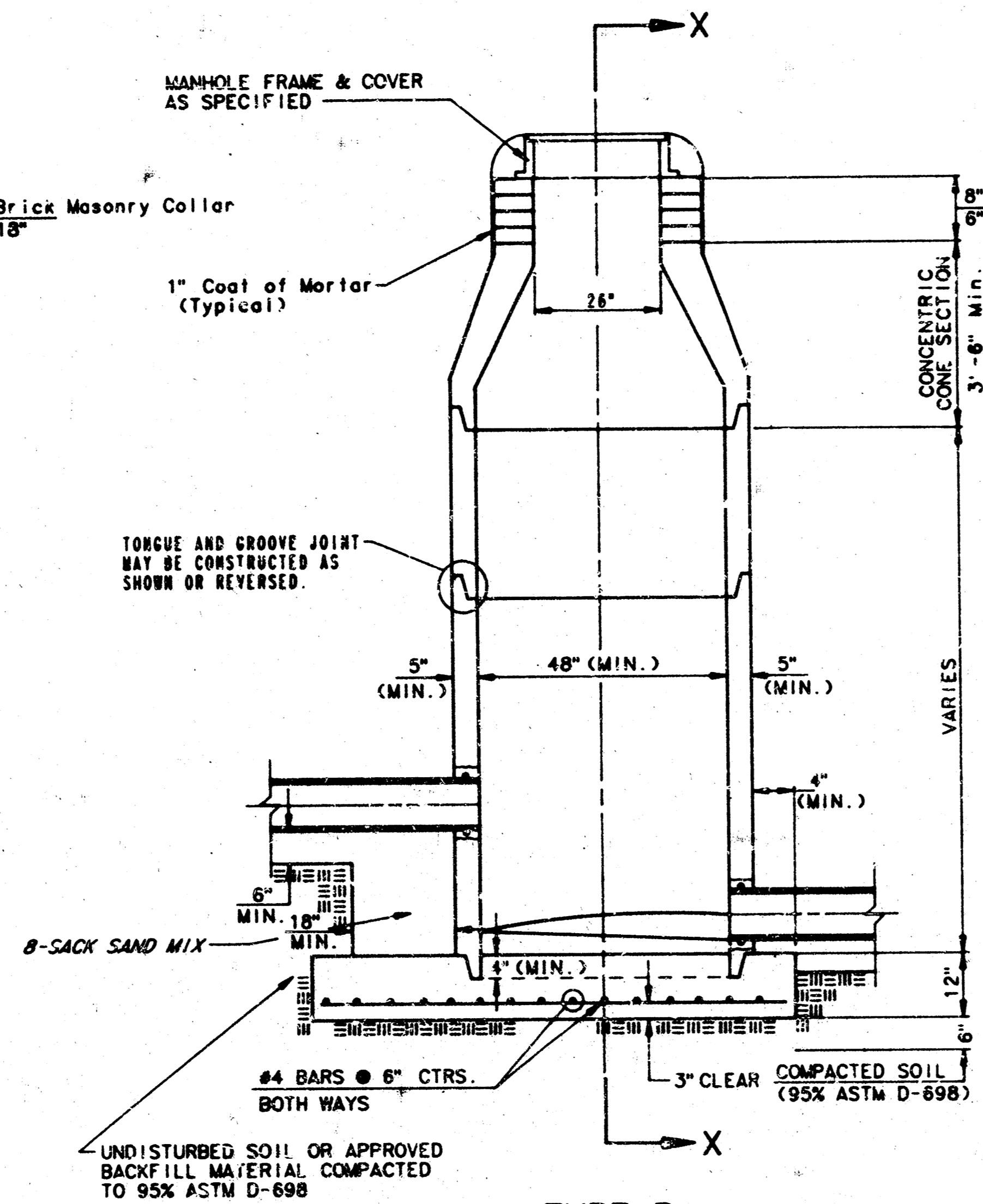
TITLE
LAT. 5, MAIN 15, SW. I.
LINE - 1B
 Westwind 2nd Addition - 468-76-245-81815-000-000-001
BAUGHMAN COMPANY, P.A.
 SURVEYING & ENGINEERING
 316282-7271 • 315 ELLIS • WICHITA, KANSAS 67211
 Design: *Regis* Drawn: *Sony* Check: *NEW* Date: *1/27/20* Scale: *as noted*

FILMED FROM THE BEST AVAILABLE COPY

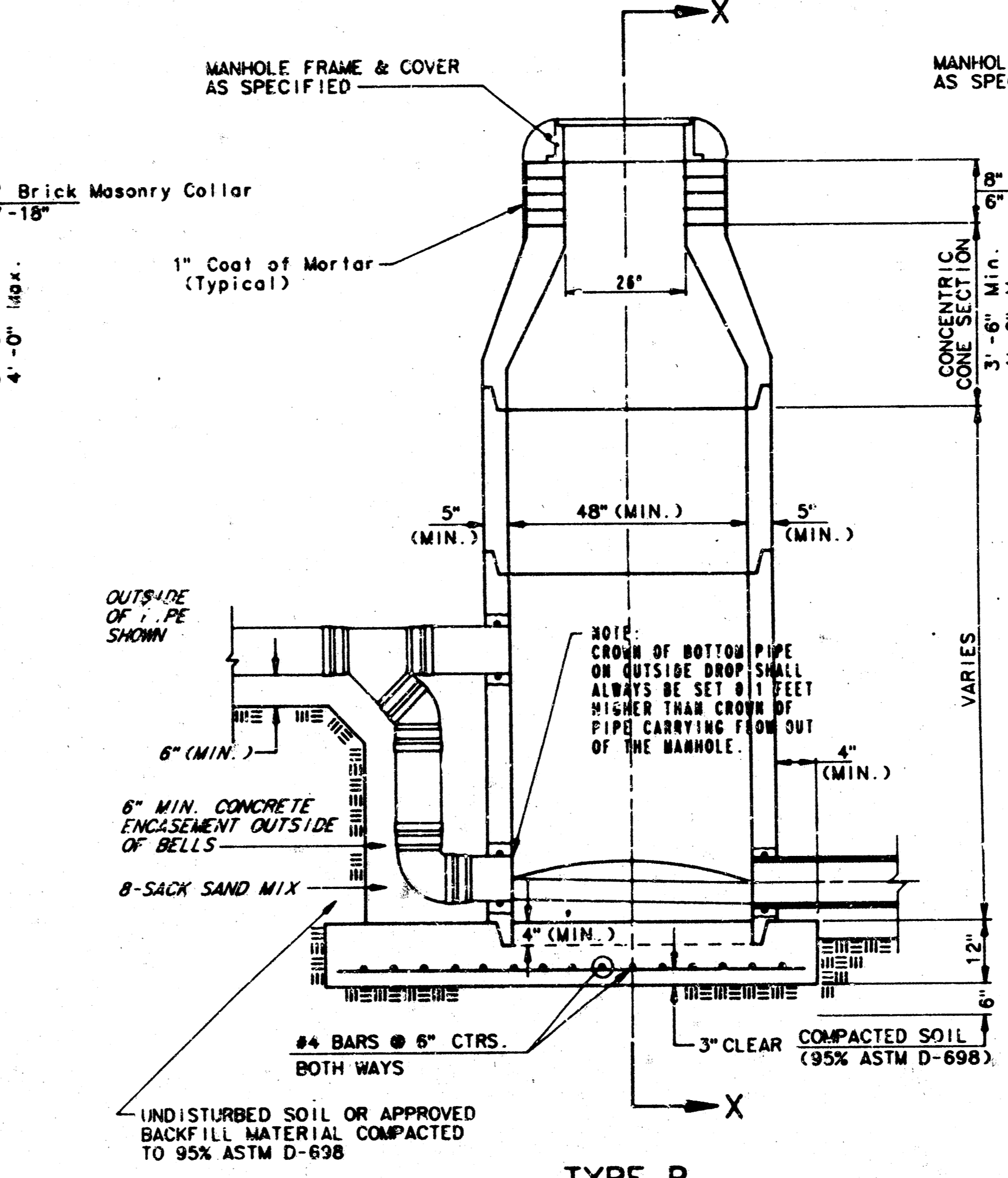
SEWER APPURTENANCES DETAILS ADOPTED AS STANDARD DESIGN BY CITY OF WICHITA



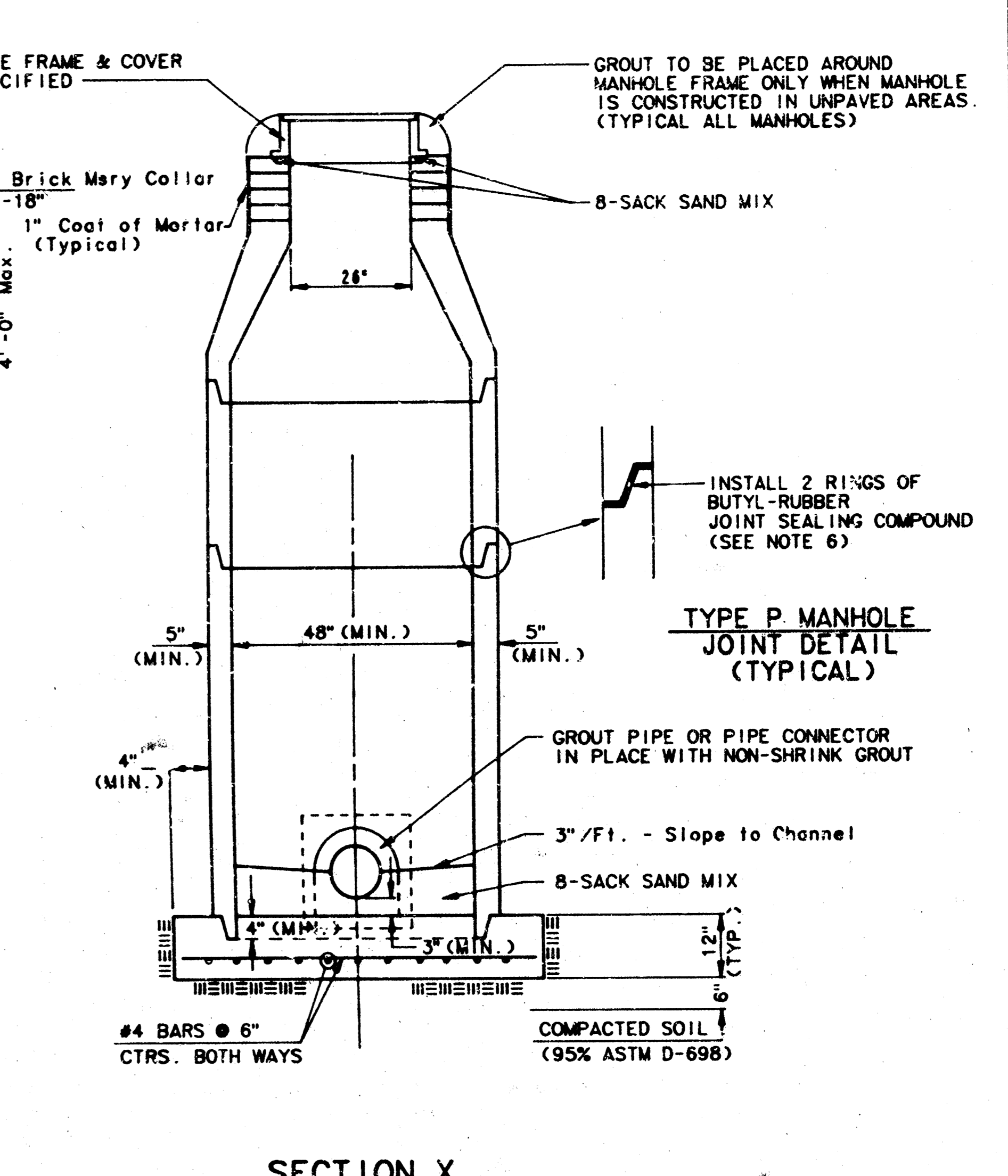
**TYPE P
STANDARD MANHOLE**



**TYPE P
INSIDE DROP MANHOLE**



**TYPE P
OUTSIDE DROP MANHOLE**



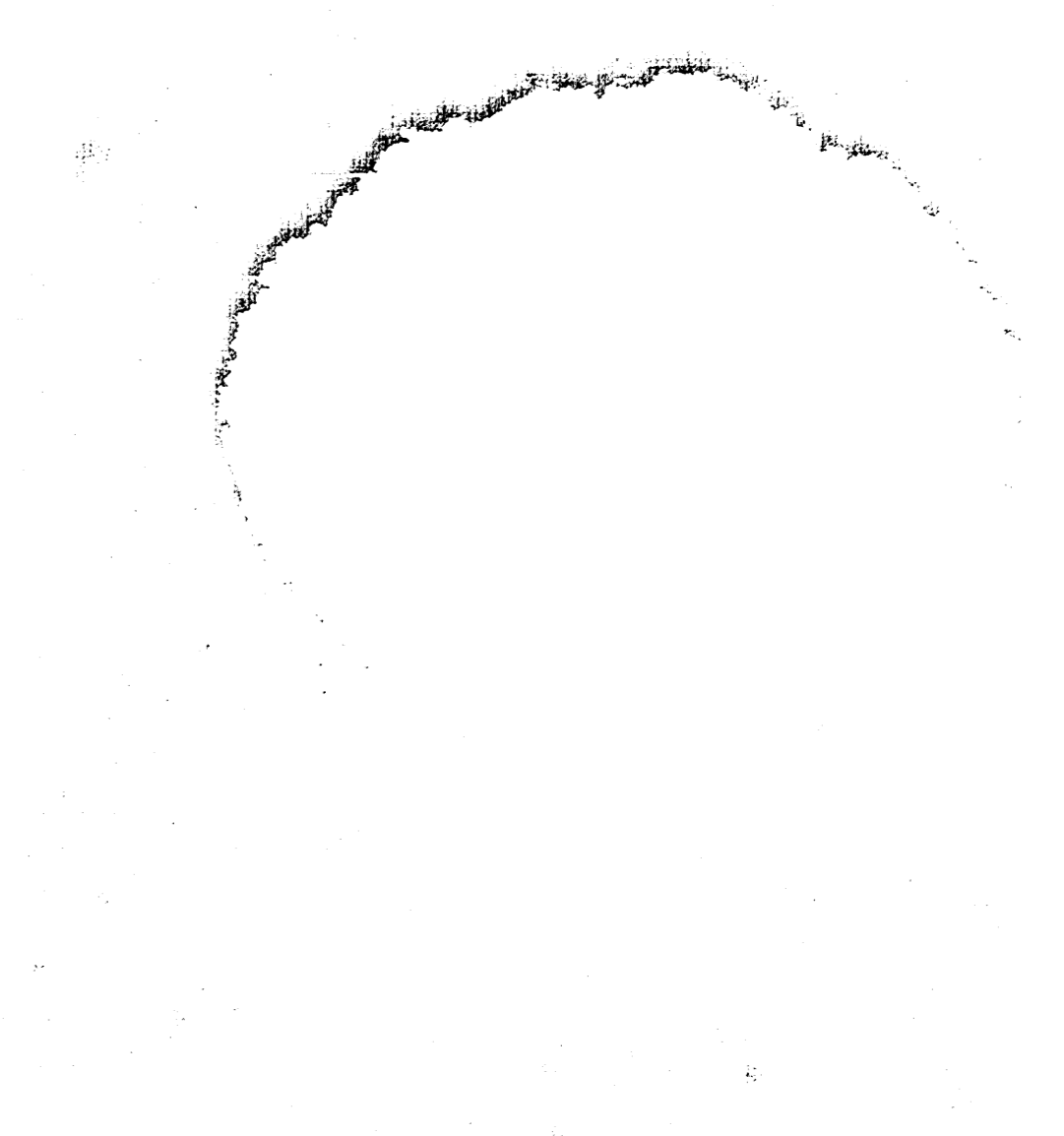
**SECTION X
(TYPICAL)**

GENERAL NOTES
PRECAST MANHOLE NOTES

1. ALL PRECAST CONCRETE MANHOLE SECTIONS SHALL CONFORM TO THE LATEST REVISION OF A.S.T.M. C478 AS MODIFIED BY THE SPECIFICATIONS.
2. NON-SHRINK GROUT SHALL BE NON-METALLIC TYPE.
3. APPROVED FLEXIBLE WATERSTOP GASKETS SHALL BE INSTALLED TO JOIN THE SEWER TO THE MANHOLE WALL WHEN A B.S. COMPOSITE PIPE OR P.V.C. PIPE IS USED. FOR OTHER TYPES OF PIPE THE SEWER SHALL BE GROUTED IN PLACE WITH NON-SHRINK GROUT. THE SEWER PIPE SHALL BE SUPPORTED WITH CONCRETE ENCASEMENT A MINIMUM OF 3 FEET FROM THE MANHOLE WALL AND TO THE FIRST JOINT FOR V.C.P. SUCH THAT THE JOINT REMAINS FLEXIBLE.
4. ALL INSIDE SURFACES OF THE CONCRETE MANHOLE WHICH WOULD BE EXPOSED TO SEWER GAS SHALL BE COATED WITH 2 COATS TREMCO SERIES 88 HI-BUILD EPOXYLINE, DRY THICKNESS OF 8 MILS (MIN.).
5. EXTERIOR MANHOLE WALLS SHALL BE COATED WITH 1 COAT MOBILARMA 633 BITUMINOUS COATING.
6. JOINT SEALING COMPOUND SHALL BE KENT SEAL NO. 2 OR APPROVED EQUAL.
7. PRECAST MANHOLES SHALL BE SET AT LEAST 4 INCHES INTO THE MANHOLE BASE.
8. TOP OF MANHOLE FLOOR SLAB SHALL BE AT LEAST 3 INCHES BELOW THE FLOW LINE OF THE OUTLET PIPE TO INSURE SUFFICIENT MINIMUM THICKNESS OF SHAPED INVERT.
9. LIFTING HOLES SHALL BE FILLED WITH NON-SHRINK GROUT AND THE INTERIOR SURFACE COATED AS SPECIFIED.
10. MORTAR USED IN MASONRY CONSTRUCTION SHALL CONTAIN 8 SACKS OF CEMENT PER CUBIC YARD. CONCRETE USED IN MANHOLE BASES SHALL CONFORM TO THE REQUIREMENTS OF CONCRETE FOR CONCRETE PAVEMENT CONSTRUCTION AS SPECIFIED IN THE CITY STANDARD PAVING SPECIFICATIONS USING CITY CONCRETE PAVEMENT MIX WITHOUT AIR ENTRAINING ADMIXTURE. MORTAR SHALL BE PLACED AROUND THE MANHOLE RING AS SHOWN ON THE DRAWINGS WHEN MANHOLES ARE CONSTRUCTED IN UNPAVED AREAS. MANHOLES CONSTRUCTED WHERE PIPE SIZES ARE SMALLER THAN 24" SHALL HAVE AN INSIDE DIAMETER OF 4". MANHOLES CONSTRUCTED WHERE PIPE SIZES ARE 24" OR LARGER SHALL HAVE AN INSIDE DIAMETER OF 5". COMPLETED MANHOLE SHALL BE WITHOUT LEAKS AND WATER TIGHT.

11. REINFORCING STEEL SHALL BE INSTALLED IN THE MANHOLE BASES AND SHALL CONSIST OF NO. 4 BARS PLACED ON 6" CENTERS IN BOTH DIRECTIONS. THE MANHOLE BASE REINFORCEMENT SHALL BE PLACED AT LEAST 3" ABOVE THE BOTTOM OF THE MANHOLE BASE. ALL COSTS FOR FURNISHING AND INSTALLING REINFORCING STEEL SHALL BE INCLUDED IN THE UNIT PRICE BID FOR THE MANHOLE.
12. OPENINGS SHALL BE CUT INTO THE MANHOLE WALL WHEN OUTSIDE DROPS ARE CONSTRUCTED ON EXISTING MANHOLES. SUCH OPENINGS CUT INTO EXISTING MANHOLES SHALL BE AS SMALL AS PRACTICAL TO FACILITATE INSTALLING AND GROUTING THE NEW PIPE IN PLACE. WATERSTOP GASKETS SHALL BE USED WITH P.V.C. AND A.B.S. COMPOSITE PIPE. THE NEW PIPE SHALL BE GROUTED INTO THE OPENING USING AN APPROVED NONSHRINK GROUT FOR THE FULL MANHOLE WALL THICKNESS. THE EXTERIOR OF THE COMPLETED CONNECTION SHALL BE SEALED WITH AN APPROVED BITUMINOUS COATING SUCH THAT THE CONNECTION WILL BE WATER TIGHT. FLOOR OF MANHOLE SHALL BE MODIFIED TO FORM NEW FLOW CHANNEL FOR THE NEW CONNECTION AS INDICATED BY THE DRAWING. THIS WORK, INCLUDING MODIFICATION OF MANHOLE FLOOR, SHALL BE PAID FOR AT THE UNIT PRICE BID FOR OUTSIDE DROP STACK CONSTRUCTED ON EXISTING MANHOLE.
13. THE FLOORS OF ALL MANHOLES SHALL BE SHAPED WITH FLOW CHANNELS SUCH THAT THE MANHOLES WILL BE SELF-CLEANING AND FREE OF AREAS WHERE SOLIDS COULD BE DEPOSITED AS SEWAGE FLOWS THROUGH THE MANHOLE FROM ALL INLET PIPES TO THE OUTLET PIPE. FLOW CHANNELS SHALL BE FORMED TO MATCH THE BOTTOM HALVES OF THE INFLOWING PIPES AND THE OUTFLOWING PIPE AS SHOWN BY THE DRAWINGS EXCEPT FOR INSIDE DROP MANHOLES. FLOW CHANNELS FOR INSIDE DROP MANHOLES SHALL BE CONSTRUCTED AS INDICATED BY THE DRAWING. MANHOLE FLOORS SHALL HAVE SLOPES OF 3 INCHES PER FOOT IN THE AREAS OUTSIDE OF THE FLOW CHANNELS SLOPED TOWARD THE FLOW CHANNELS. PIPES LAID THROUGH MANHOLES SHALL HAVE THE TOP HALF REMOVED TO REVEAL LINES FOR THE FULL INSIDE DIAMETER OF THE MANHOLE. MANHOLE FLOORS SHALL THEN BE SHAPED AROUND THE BOTTOM HALF OF THE PIPE WHICH FORMS THE FLOW CHANNEL.
14. PIPES INSTALLED WITHIN THE EXCAVATION MADE FOR THE MANHOLE SHALL BE CRADLED WITH CONCRETE TO THE LIMITS OF THE MANHOLE EXCAVATION. WHEN CLAY PIPE IS USED, THE CRADLE SHALL EXTEND TO THE FIRST JOINT OUTSIDE THE MANHOLE. THE CRADLE SHALL BE TERMINATED AT THE CLAY PIPE JOINT IN A MANNER WHICH WILL MAINTAIN THE FLEXIBILITY OF THE JOINT. COST OF CRADLE WITHIN MANHOLE EXCAVATION OR TO CLAY PIPE JOINTS ADJACENT TO MANHOLE SHALL BE INCLUDED IN THE UNIT PRICE BID FOR THE MANHOLE.

15. MANHOLE COVER CASTINGS AND MANHOLE FRAME CASTINGS SHALL CONFORM TO THE REQUIREMENTS AS INDICATED IN THE STANDARD SPECIFICATIONS AND AS SHOWN IN THE STANDARD DETAIL DRAWING.
16. THE VERTICAL DROP IN INSIDE DROP MANHOLES SHALL NOT EXCEED 4" FOR INFLOWING PIPES SIZED 12" OR SMALLER AND 2" FOR INFLOWING PIPES LARGER THAN 12". THE CROWNS OF INFLOWING PIPES SHALL NEVER BE SET LOWER THAN THE CROWN OF THE OUTFLOWING PIPE.
17. STANDARD MANHOLES AND STANDARD INSIDE DROP MANHOLES SHALL BE BID AS STANDARD MANHOLES FOR THE TYPE AND DIAMETER INDICATED. OUTSIDE DROP MANHOLES SHALL BE BID AS STANDARD OUTSIDE DROP MANHOLES FOR THE TYPE AND DIAMETER INDICATED. ALL MANHOLE DIAMETERS WILL BE 4' UNLESS INDICATED OTHERWISE.
18. A BRICK MASONRY COLLAR SHALL BE INSTALLED BETWEEN THE CAST IRON FRAME AND THE CONCENTRIC COME. THE COLLAR WILL HAVE 8" WALLS AND A VERTICAL HEIGHT OF 6" MINIMUM AND 18" MAXIMUM. A 1" COAT OF MORTAR WILL BE PLASTERED ON THE OUTSIDE OF THE COLLAR.

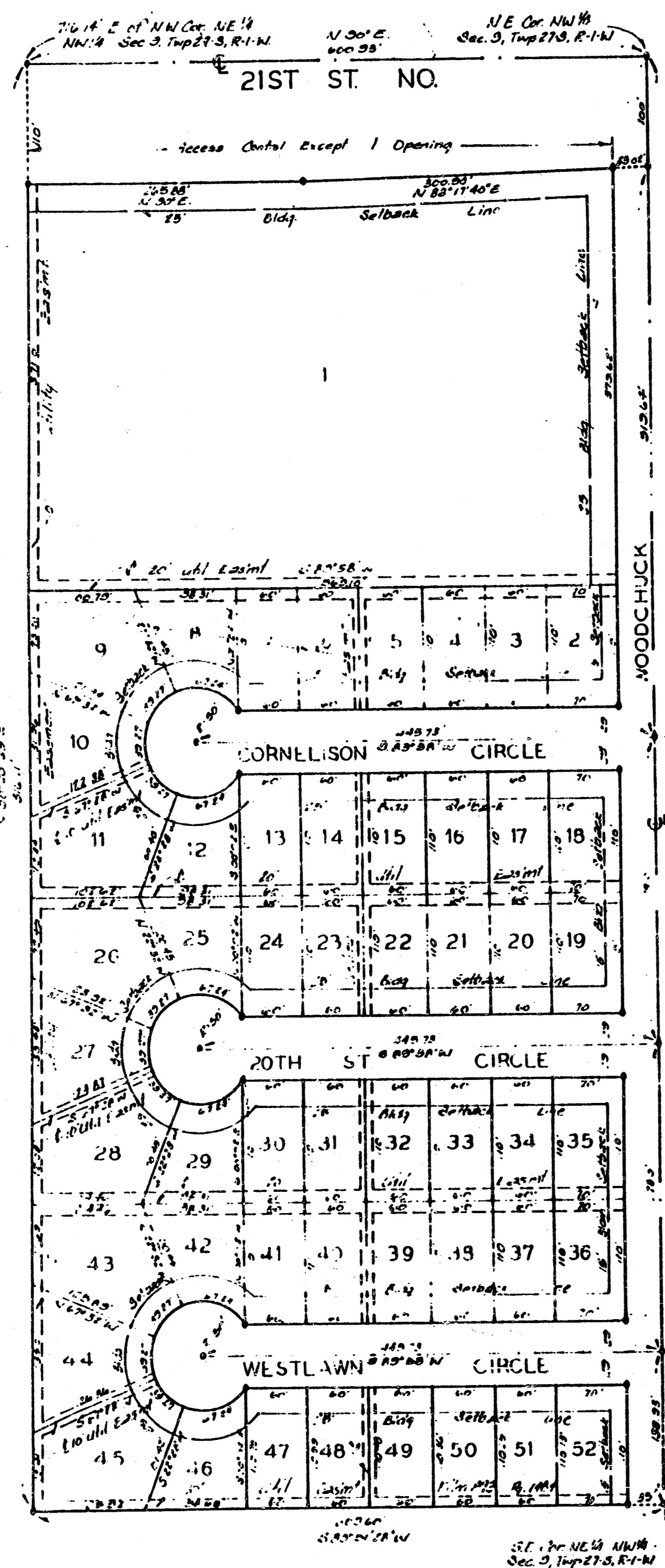


**FILMED FROM THE BEST
AVAILABLE COPY**

D 5-29

WESTWIND 2ND ADDITION

WICHITA, KANSAS



State of Kansas, ss. We, Baughman Company, P.A. Surveyors in and for said county and state do hereby certify that we have surveyed and plotted "WESTWIND 2ND ADDITION" Wichita, Kansas; and that the accompanying plat is a true and correct exhibit of the property surveyed, described as the NE 1/4 of the NW 1/4 of Sec. 9, Twp. 27-S, R-1-W of the 6th P.M., Sedgwick County, Kansas except that part described as beginning at the N.W. Corner of the NE 1/4, NW 1/4 of said Sec. 9; thence bearing N 30° 00' 00" E along the North line of said NW 1/4 a distance of 716.14 feet; thence bearing S 00° 20' 39" W a distance of 1316.11 feet to a point on the South line of the NE 1/4 of said NW 1/4; thence bearing S 89° 51' 28" W a distance of 724.80 feet to the S.W. Corner of the NE 1/4 of said NW 1/4; thence bearing N 00° 43' 15" E a distance of 1316.00 feet to the point of beginning.

" Dec 1981"
Date
Baughman Company, P.A.
Mark A. Sevey, Surveyor

Know all men by these presents that we, the undersigned, have caused the land described in the surveyors certificate to be platted into lots and streets to be known as "WESTWIND 2ND ADDITION" Wichita, Kansas. The utility easements are hereby granted as indicated for the construction and maintenance of all public utilities. The streets are hereby dedicated to and for the use of the public. All egress rights of access to or from 21st St. No over and across the north line of lot 1 are hereby granted to the City of Wichita, provided however that lot 1 shall have access to 21st St. No at one point as shall be determined by the City Engineer of Wichita, Kansas.

Alla Vista Development Company, a Kansas General Partnership
Leonard E. Marotte, General Partner

State of Kansas, ss. The foregoing instrument acknowledged before me this 23rd day of December, 1981, by Leonard E. Marotte, General Partner of Alla Vista Development Company, a Kansas General Partnership, on behalf of the partnership.

My Appt. Exp. _____
Notary Public
Sandra K. Potter

This plat of "WESTWIND 2ND ADDITION" Wichita, Kansas, has been submitted to and approved by the Wichita-Sedgwick County Metropolitan Area Planning Commission, Wichita, Kansas. Dated this 11th day of December, 1981. Wichita-Sedgwick County Metropolitan Area Planning Commission

John Terry Moore, Chairman
Merrin S. Knott, Secretary

This plat approved and all dedications shown hereon accepted by the Board of Commissioners of the City of Wichita, Kansas, this _____ day of _____, 1981.

Robert A. Knight, Mayor
Date E. Bee, Deputy City Clerk

Entered on transfer record _____ day of _____, 1982.

Ed. B. B. Registrar

State of Kansas, ss. This is to certify that this plat has been filed in the office of the Registrar of Deeds this 23rd day of December, 1981. Ed. B. B. Registrar

Ed. B. B. Registrar
Ed. B. B. Registrar

we, the undersigned, all as mortgagors, do hereby consent to the plat of "WESTWIND 2ND ADDITION" Wichita, Kansas.

Federal Deposit Insurance Corporation as receiver for Boulevard State Bank
Lynn T. Lott

State of Kansas, ss. The foregoing instrument acknowledged before me this 23rd day of December, 1981, by _____ of Federal Deposit Insurance Corporation, on behalf of the corporation.

My Appt. Exp. _____
Notary Public
Sandra K. Potter

466-76-245-61615-000-000-001 (LATE, M, 15, 54)

PLAT COPY

BAUGHMAN COMPANY, P.A.
SURVEYING & ENGINEERING
318-262-7271 - 315 ELLIS - WICHITA, KANSAS 67211

Designed	Drawn	Approved	Date	Scale
				7

D 5-29

FILMED FROM THE BEST AVAILABLE COPY