

Sanitary Sewer Improvements To Serve
LAKE RIDGE ADDITION
LATERAL 26, MAIN 15
SOUTHWEST INTERCEPTOR SEWER

Project No.

468-76-245-82224-000-000-001

CITY OF WICHITA, KANSAS

Michael E. Lindebak City Engineer

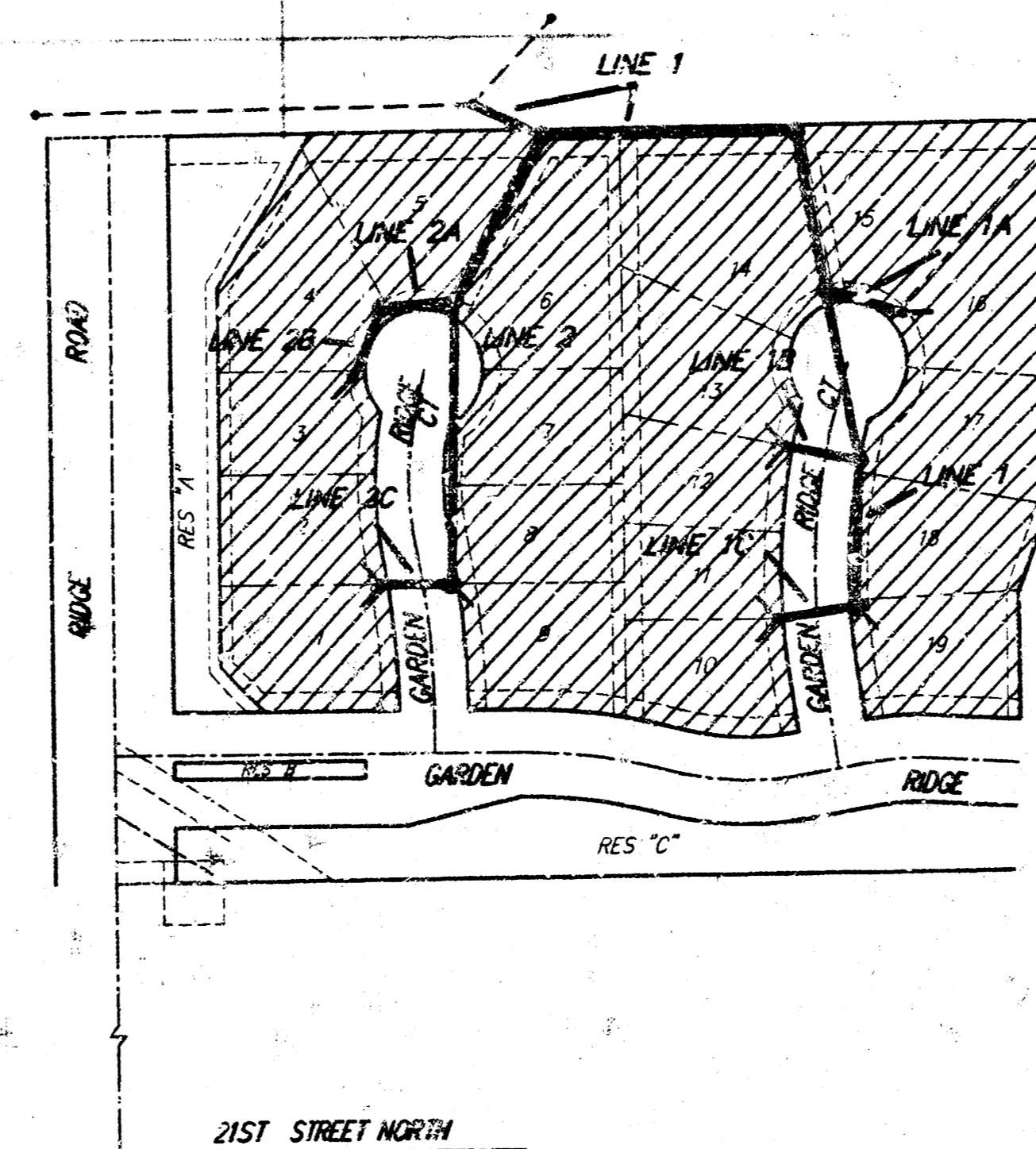
Index Code: 741181

Index

- 1. COVER SHEET
- 2. PLAN/PROFILE LINES 1, 1A, 1B & 1C
- 3. PLAN/PROFILE LINES 2, 2A, 2B & 2C
- 4. MANHOLE DETAIL
- 5. CLEANOUT RISER DETAIL
- 6. EASEMENT GRADING PLAN
- 7. PLAT OF LAKE RIDGE ADDITION

General Notes

1. Underground utility service lines and overhead utility pole lines are to be adjusted as necessary by others prior to construction unless the plans specifically call for their adjustment by the Contractor or unless the plans specifically identify a utility to be adjusted by its owner during construction. Existing utilities and their location, as shown on the plans, represent the best information obtainable for design. The Contractor will be required to work around existing utilities within the right-of-way which do not conflict with proposed construction.
2. The Contractor shall notify pipeline companies at least 24 hours in advance of any work being performed across and/or adjacent to pipelines.
3. Trees and shrubs in public right-of-way which are in direct conflict with proposed new construction shall be removed by the Contractor with the Engineer's approval. Trees and shrubs which are not in direct conflict with proposed new construction shall be saved and protected from damage.
4. The Contractor shall be responsible for maintaining continuous flow of sewage through construction. Contractor's proposed method for maintaining sewage flow shall be approved by the Engineer. Cost of maintaining flow of sewage through construction will not be paid for directly and this cost shall be considered as subsidiary to the other pay items of work.
5. The Contractor shall be responsible for preserving property irons. The Contractor will be required to re-establish any property irons which are damaged or destroyed by his construction operations. Such irons shall be re-established by a licensed land surveyor in accordance with state laws.
6. Contractor shall grade the sanitary sewer alignment to the profile and elevations shown on the easement grading plan. All costs for grading shall be paid as lump sum easement grading.
7. Traffic will not be affected by construction on this project.



Benefit District

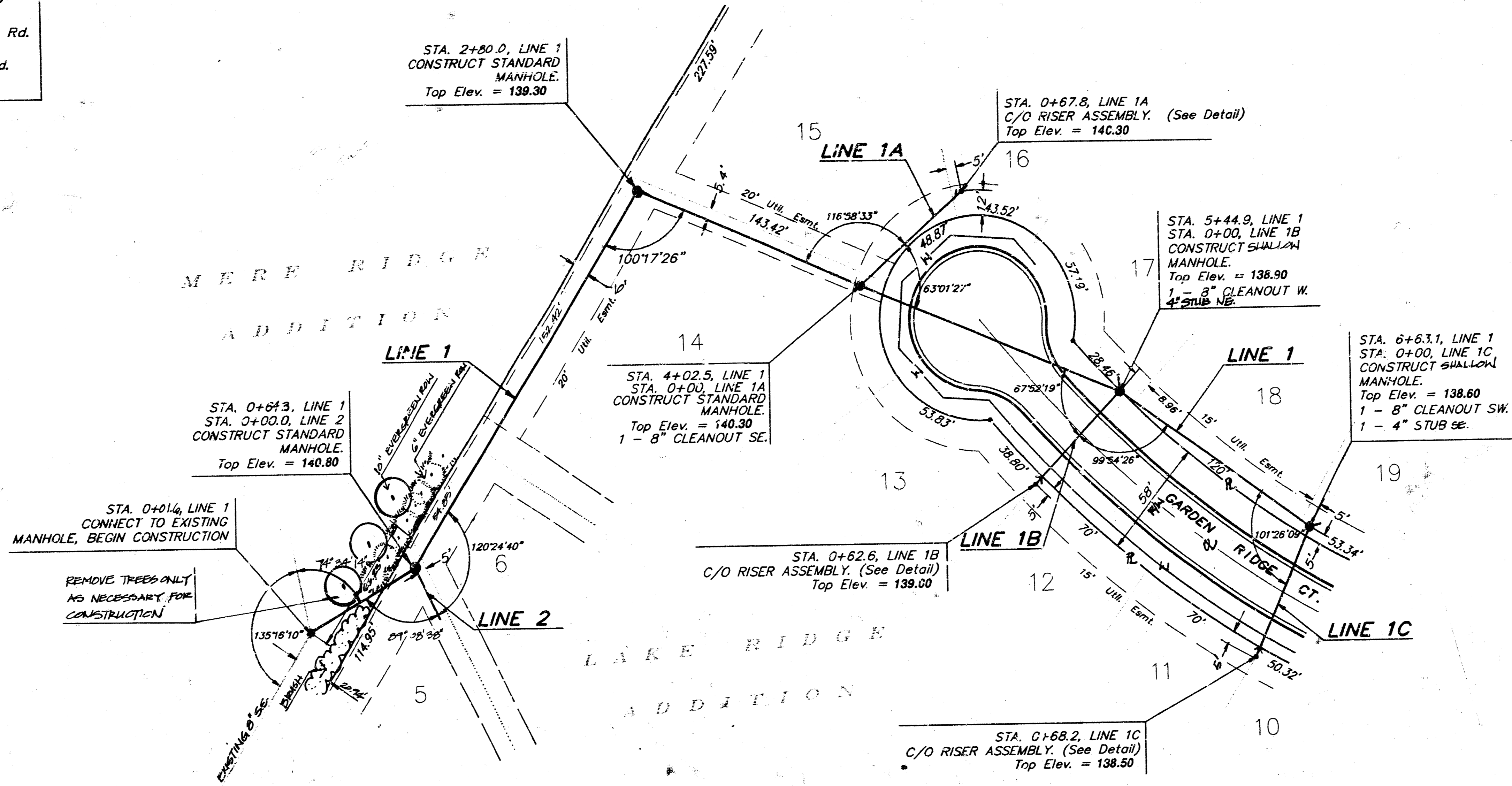
*Booked 4-28-93
 by JKB
 AS PER PLAN*

SCALE:
 1" = 150'

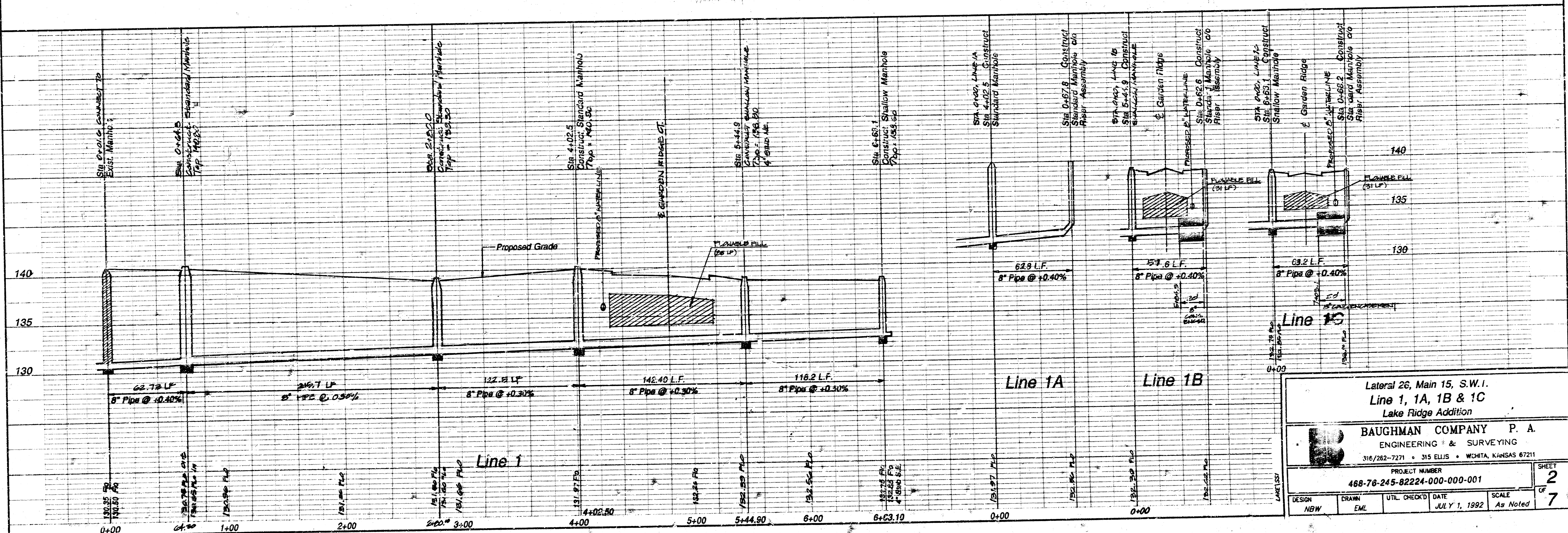


Benchmarks:

- on Top of Curb, SW Corner Lot 17, Blk. 1 Mere Ridge.
Elev. = 137.75
- R.R. Spike in Power Pole 75' N. & 58' E of 21st N Ridge Rd.
Elev. = 143.30
- on Wing Wall NE Corner Bridge 1510± E of Ridge Rd.
Elev. = 138.02

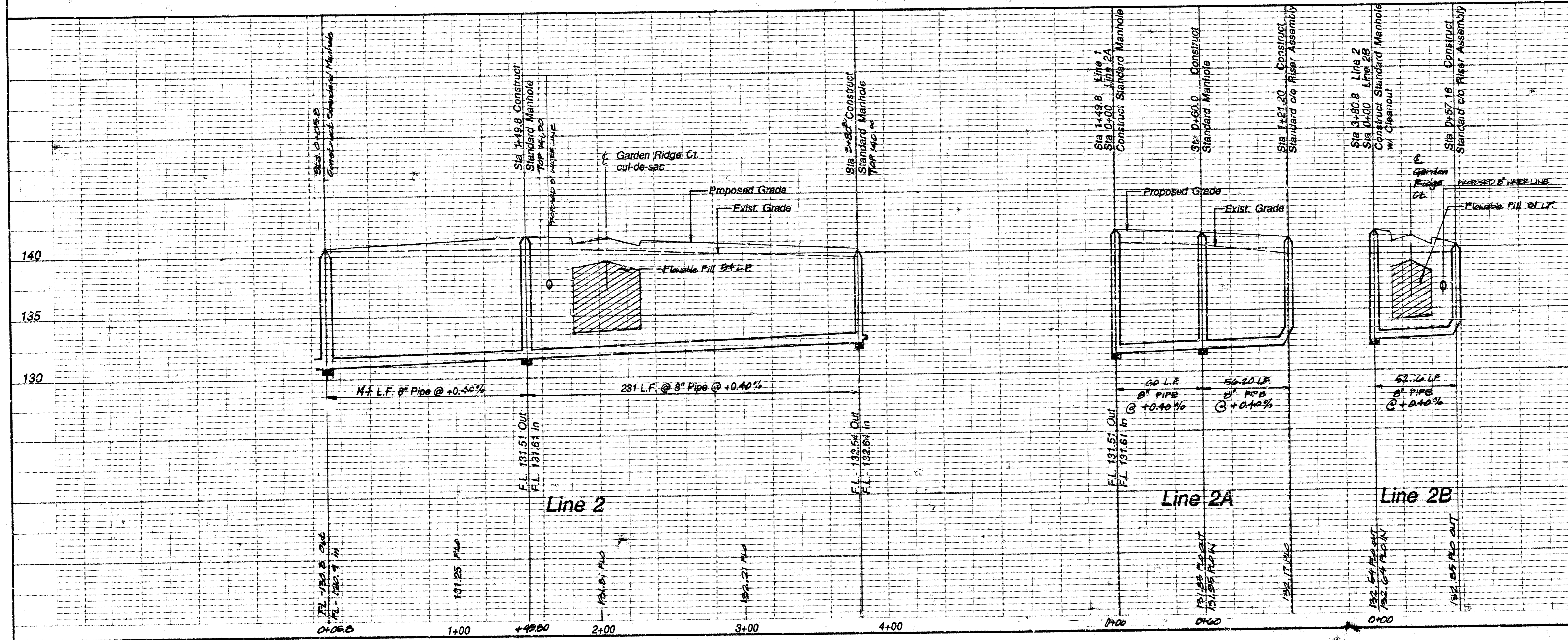
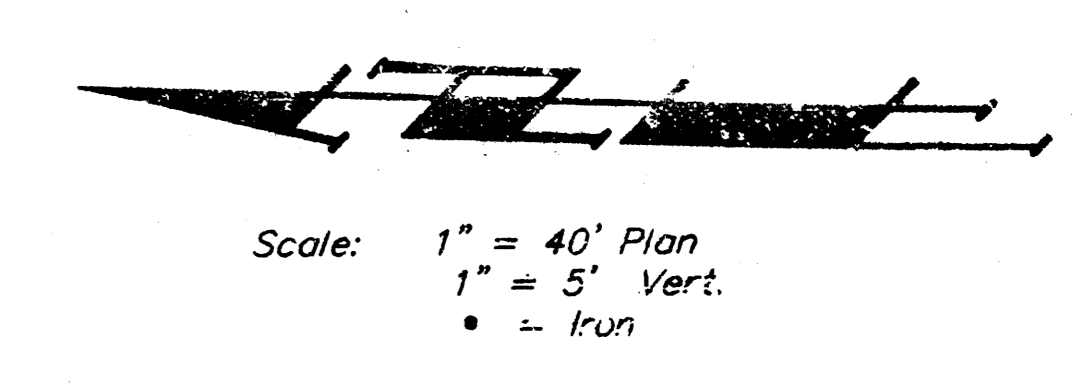
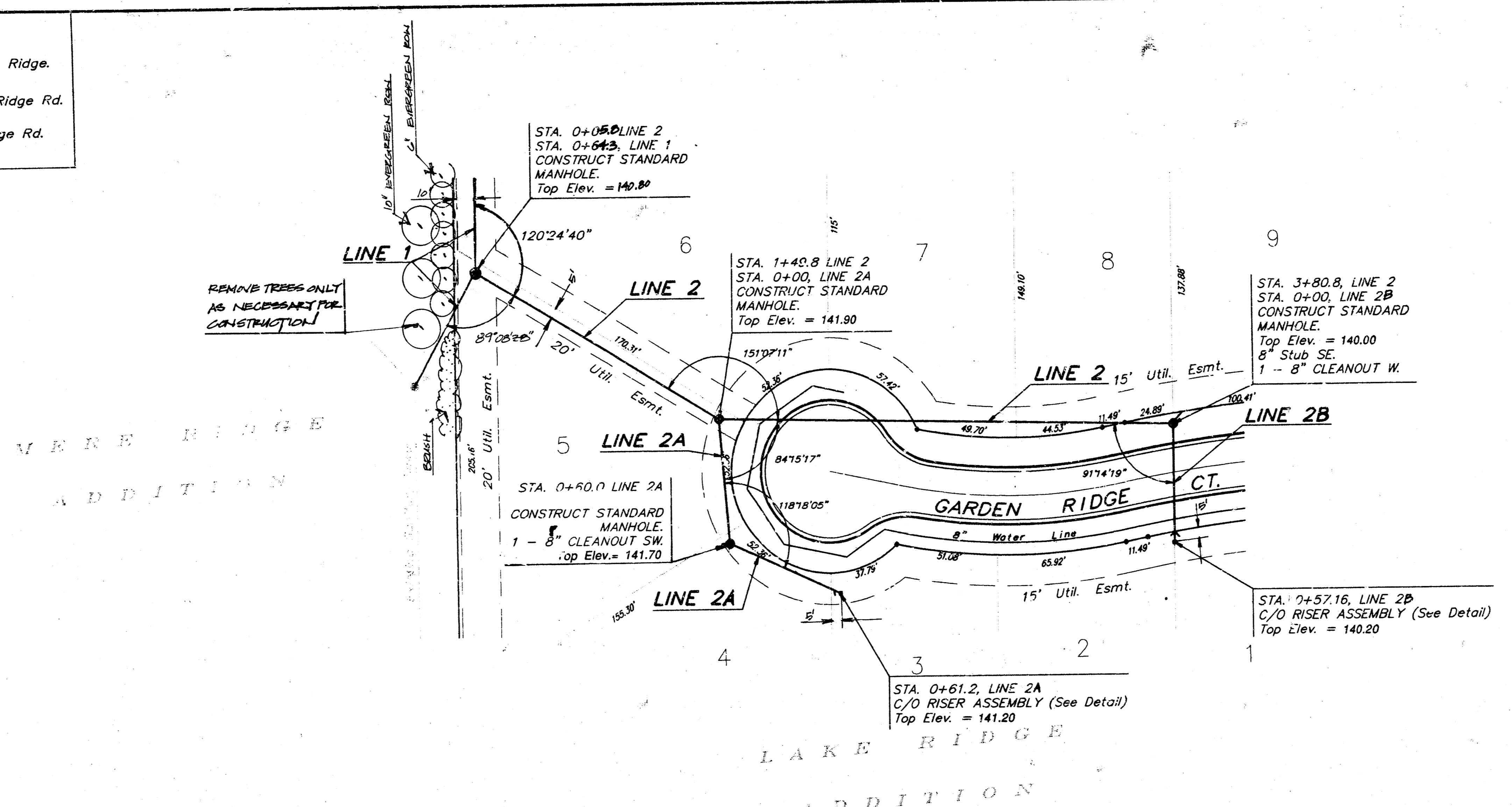


Scale: 1" = 40' Plan
1" = 5' Vert.
• = Iron



Benchmarks:

□ on Top of Curb, SW Corner Lot 17, Blk. 1 Mere Ridge.
 Elev. = 137.75
 R.R. Spike in Power Pole 75' N. & 58' E of 21st N Ridge Rd.
 Elev. = 143.30
 □ on Wing Wall NE Corner Bridge 1510± E of Ridge Rd.
 Elev. = 138.02



Lateral 26, Main 15, S.W.I.
Line 2, 2A & 2B
 Lake Ridge Addition

BAUGHMAN COMPANY P. A.
 ENGINEERING & SURVEYING
 316/262-7271 • 315 ELLIS • WICHITA, KANSAS 67211

PROJECT NUMBER
468-76-245-82204-000-001

DESIGN NEW DRAWN EML UTIL. CHECK'D DATE JULY 1, 1992 SCALE As Noted

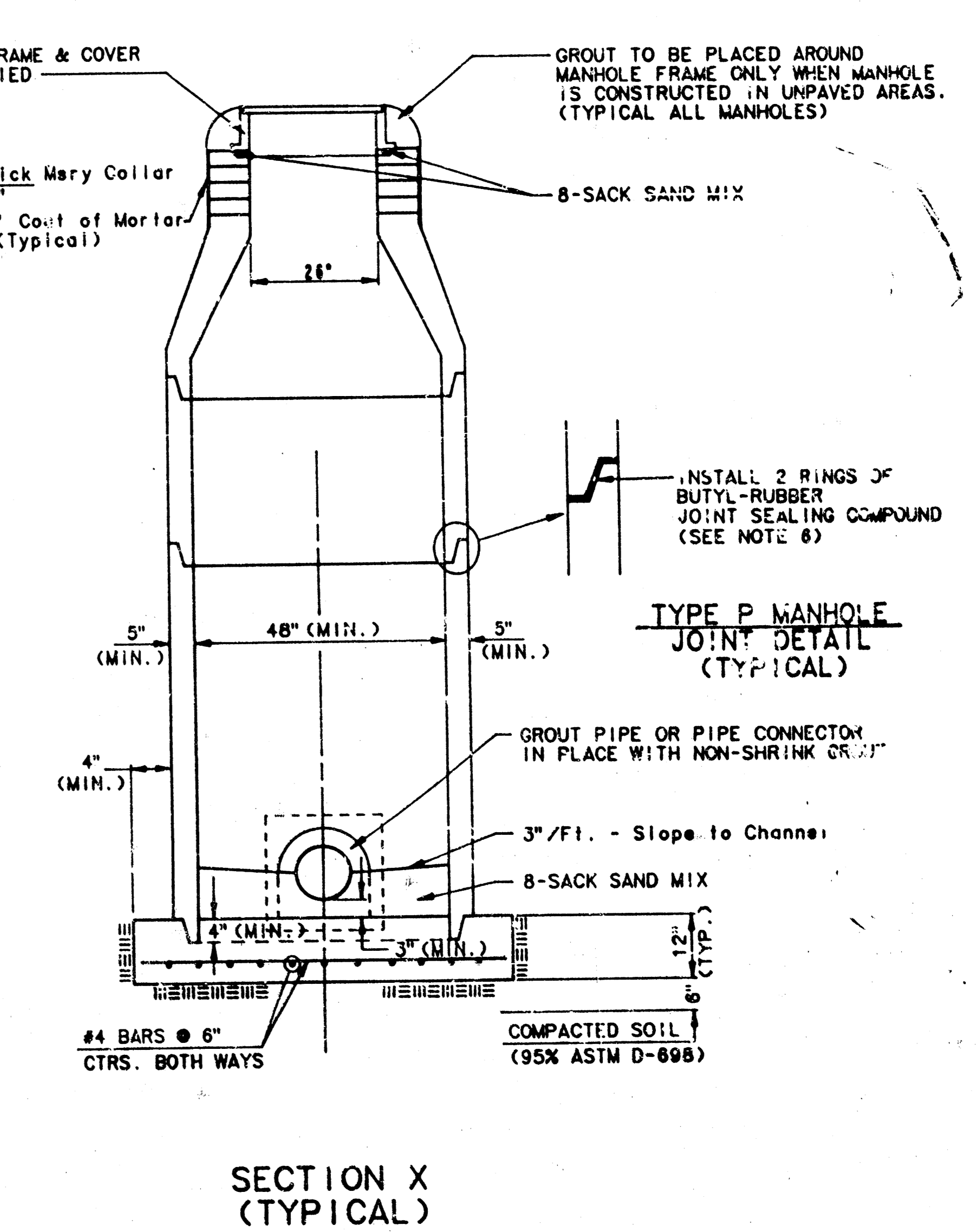
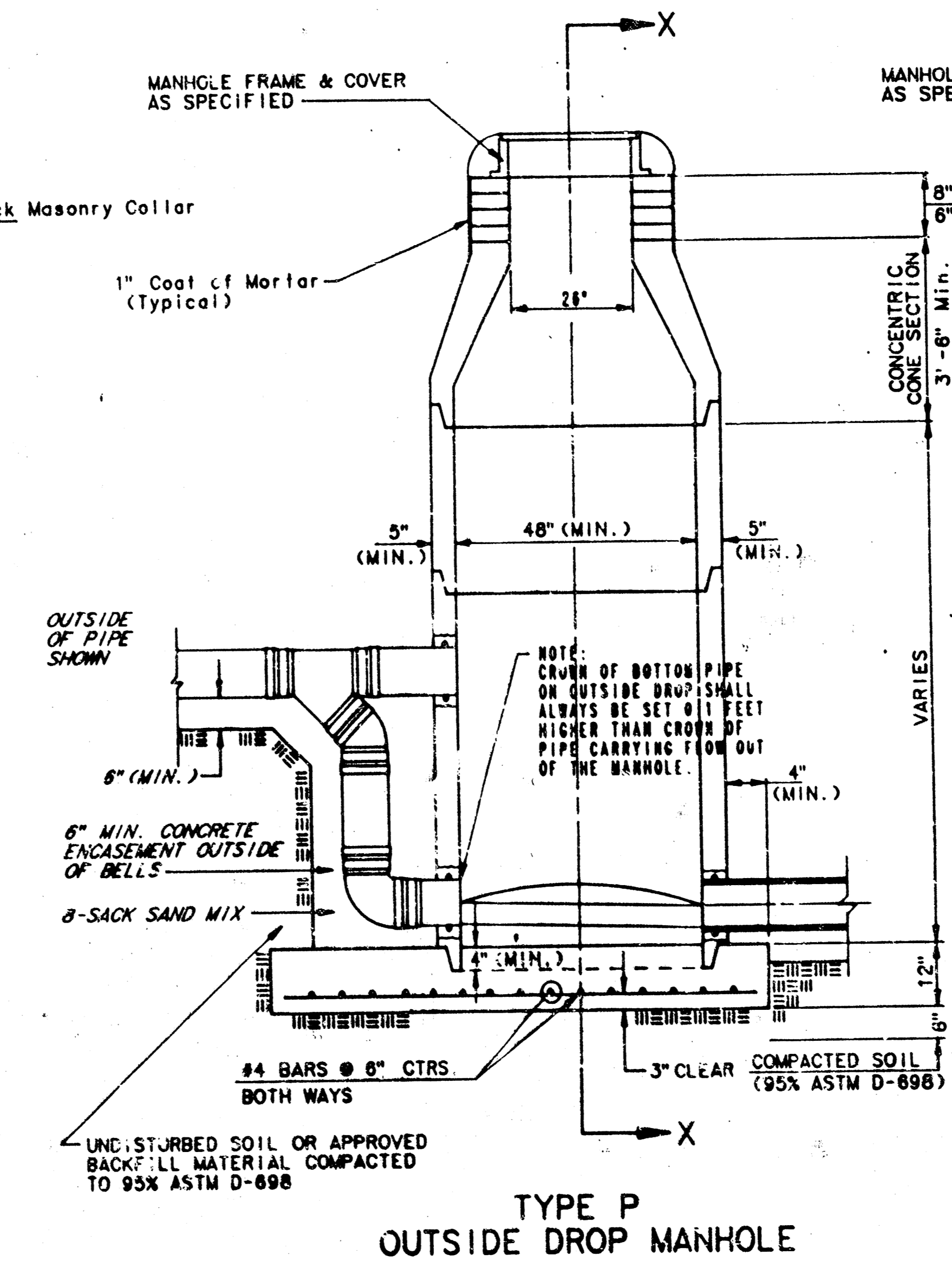
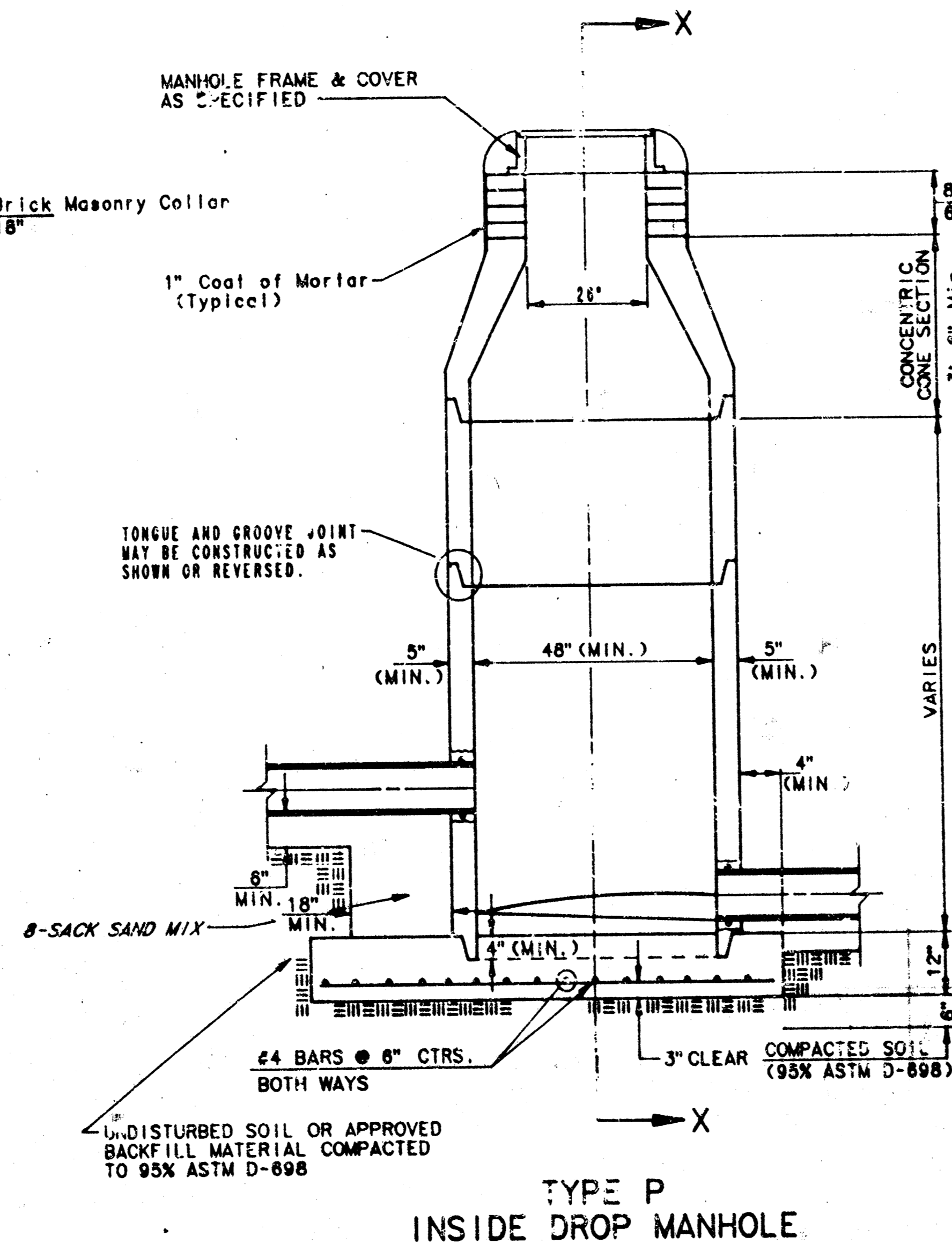
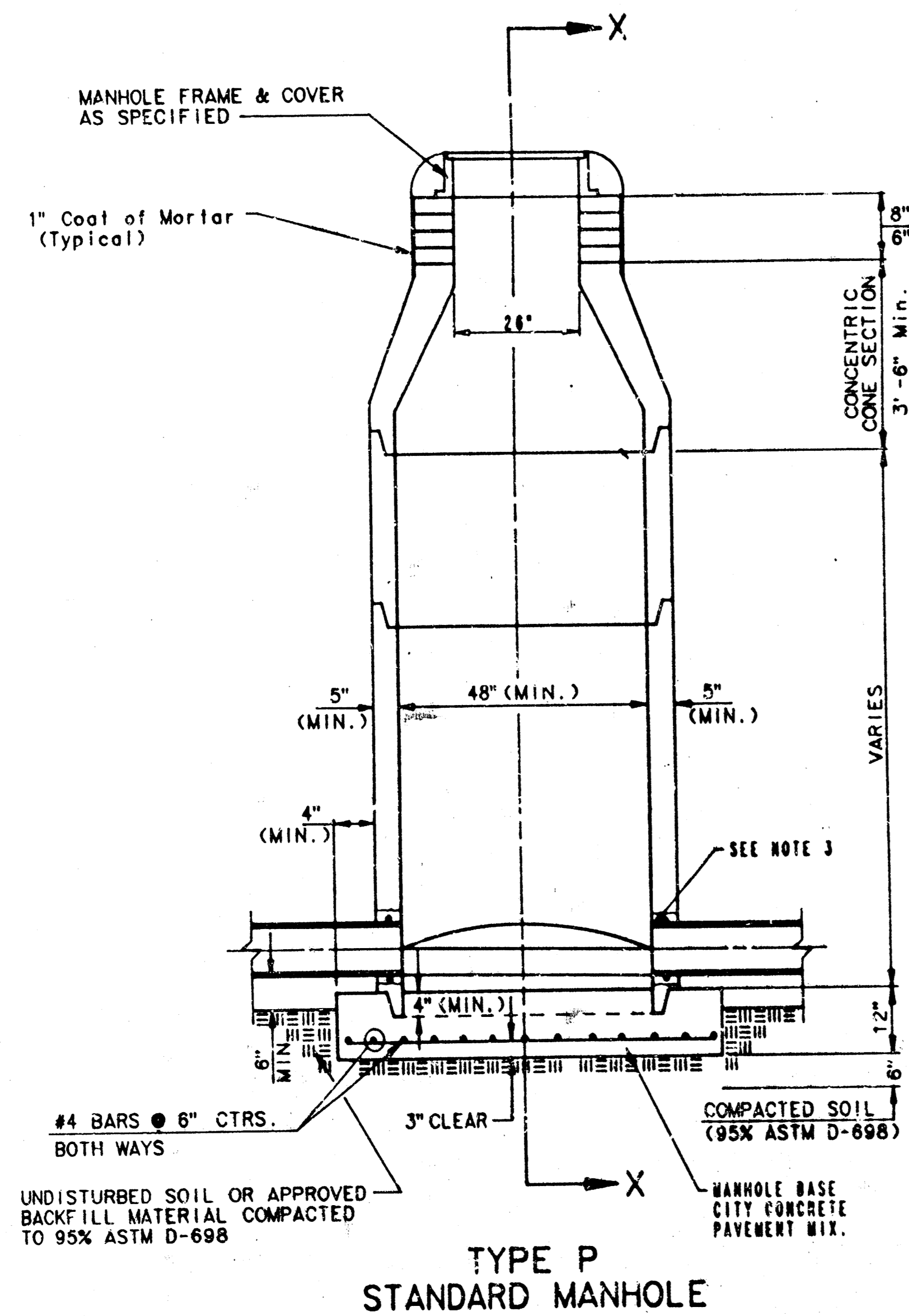
SHEET **3** OF **7**

SEWER APPURTENANCES DETAILS

ADOPTED AS STANDARD DESIGN

BY

CITY OF WICHITA

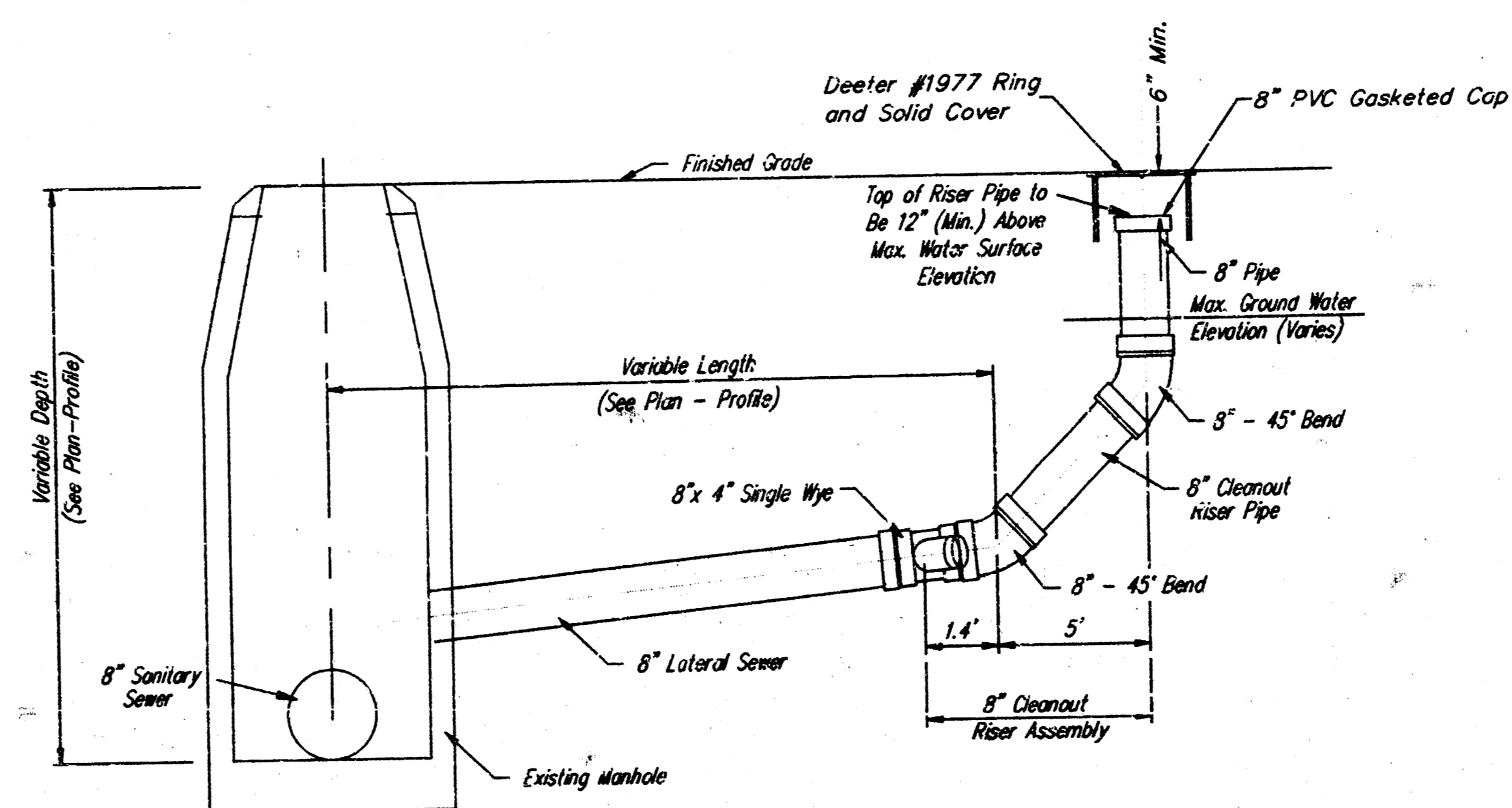


GENERAL NOTES
PRECAST MANHOLE NOTES

1. ALL PRECAST CONCRETE MANHOLE SECTIONS SHALL CONFORM TO THE LATEST REVISION OF A.S.T.M. C478 AS MODIFIED BY THE SPECIFICATIONS.
2. NON-SHRINK GROUT SHALL BE NON-METALLIC TYPE.
3. APPROVED FLEXIBLE WATERSTOP GASKETS SHALL BE INSTALLED TO JOIN THE SEWER TO THE MANHOLE WALL WHEN A P.V.C. COMPOSITE PIPE OR P.V.C. PIPE IS USED. FOR OTHER TYPES OF SEWER PIPE, THE SEWER SHALL BE GROUDED IN PLACE WITH A MINIMUM OF 3 FEET FROM THE MANHOLE JOINT FOR V.C.P. SUCH THAT THE JOINT FOR V.C.P. SHALL BE AT LEAST 3 FEET FROM THE JOINT.
4. ALL INTERIOR SURFACES OF THE CONCRETE MANHOLE SHALL BE EXPOSED TO SEWER GAS SHALL BE SERIES 88 HI-BUILD EPOXYLINE, D.
5. EXTERIOR MANHOLE WALLS SHALL BE 633 BITUMINOUS COATING.
6. JOINT SEALING COMPOUND SHALL BE KL 80WAL.
7. PRECAST MANHOLES SHALL BE SET AT LEAST 3 INCHES BELOW THE MANHOLE BASE.
8. TOP OF MANHOLE FLOOR SLAB SHALL BE AT LEAST 3 INCHES BELOW THE FLOW LINE OF THE OUTLET PIPE TO INSURE SUFFICIENT MINIMUM THICKNESS OF SHAPED INVERT.
9. LIFTING HOLES SHALL BE FILLED WITH NON-SHRINK GROUT AND THE INTERIOR SURFACE COATED AS SPECIFIED.
10. MORTAR USED IN MASONRY CONSTRUCTION SHALL CONTAIN 8 BAGS OF CEMENT PER CUBIC YARD. CONCRETE USED IN MANHOLE BASES SHALL CONFORM TO THE REQUIREMENTS OF CONCRETE FOR CONCRETE PAVEMENT CONSTRUCTION AS SPECIFIED IN THE CITY STANDARD PAVING SPECIFICATIONS USING CITY CONCRETE PAVEMENT MIX WITHOUT AIR ENTRAINING AD MIXTURE. MORTAR SHALL BE PLACED AROUND THE MANHOLE RING AS SHOWN ON THE DRAWINGS WHEN MANHOLES ARE CONSTRUCTED IN UNPAVED AREAS. MANHOLES CONSTRUCTED WHERE PIPE SIZES ARE SMALLER THAN 24" SHALL HAVE AN INSIDE DIAMETER OF 4". MANHOLES CONSTRUCTED WHERE PIPE SIZES ARE 24" OR LARGER SHALL HAVE AN INSIDE DIAMETER OF 5". COMPLETED MANHOLE SHALL BE WITHOUT LEAKS AND WATER TIGHT.

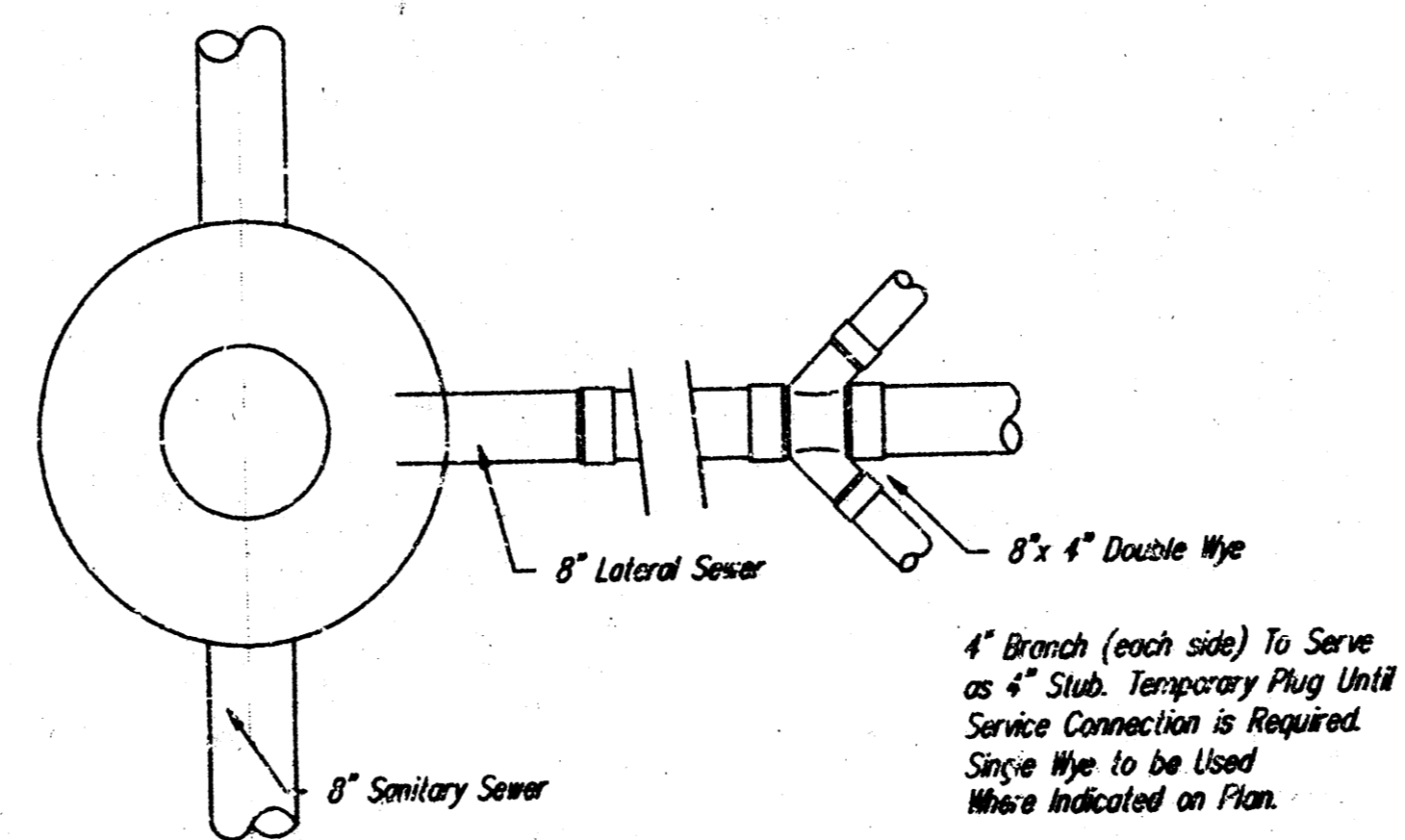
11. REINFORCING STEEL SHALL BE INSTALLED IN THE MANHOLE BASES AND SHALL CONSIST OF FOUR 6" BARS PLACED ON 4" CENTERS IN BOTH DIRECTIONS. THE MANHOLE BASE REINFORCEMENT SHALL BE PLACED AT LEAST 3" ABOVE THE BOTTOM OF THE MANHOLE BASE. ALL COSTS FOR FURNISHING AND INSTALLING REINFORCING STEEL SHALL BE INCLUDED IN THE UNIT PRICE BID FOR THE MANHOLE.
12. OPENINGS SHALL BE CUT INTO THE MANHOLE WALL WHEN OUTSIDE DROPS ARE CONSTRUCTED ON EXISTING MANHOLES. SUCH OPENINGS CUT INTO EXISTING MANHOLES SHALL BE AS SMALL AS PRACTICAL TO FACILITATE INSTALLING AND GROUDED THE NEW PIPE IN PLACE. WATERSTOP GASKETS SHALL BE USED WITH P.V.C. AND A.B.S. COMPOSITE PIPE. THE NEW PIPE SHALL BE GROUDED INTO THE OPENING USING AN APPROVED NON-SHRINK GROUT FOR THE FULL MANHOLE WALL THICKNESS. THE EXTERIOR OF THE COMPLETED CONNECTION SHALL BE SEALED WITH AN APPROVED BITUMINOUS COATING SUCH THAT THE CONNECTION WILL BE WATER TIGHT. FLOOR OF MANHOLE SHALL BE MODIFIED TO FORM NEW FLOW CHANNEL FOR THE NEW CONNECTION AS INDICATED BY THE DRAWING. THIS WORK, INCLUDING MODIFICATION OF MANHOLE FLOOR, SHALL BE PAID FOR AT THE UNIT PRICE BID FOR OUTSIDE DROP STACK CONSTRUCTED ON EXISTING MANHOLE.
13. THE FLOORS OF ALL MANHOLES SHALL BE SHAPED WITH FLOW CHANNELS SUCH THAT THE MANHOLES WILL BE SELF-CLEANING AND FREE OF AREAS WHERE SOLIDS COULD BE DEPOSITED AS SEWER FLOWS THROUGH THE MANHOLE FROM ALL INLET PIPES TO THE OUTLET. FLOW CHANNELS SHALL BE FORMED TO MATCH THE BOTTOM HALVES OF THE INFLOWING PIPES AND THE OUTFLOWING PIPE AS SHOWN BY THE DRAWINGS EXCEPT FOR INSIDE DROP MANHOLES. FLOW CHANNELS FOR INSIDE DROP MANHOLES SHALL BE CONSTRUCTED AS INDICATED BY THE DRAWING. MANHOLE FLOORS SHALL HAVE SLOPES OF 3 INCHES PER FOOT IN THE AREAS OUTSIDE OF THE FLOW CHANNELS SLOPED TOWARD THE FLOW CHANNELS. PIPES LAID THROUGH MANHOLES SHALL HAVE THE TOP HALF REMOVED TO REVEAL LINES FOR THE FULL INSIDE DIAMETER OF THE MANHOLE. MANHOLE FLOORS SHALL THEN BE SHAPED AROUND THE BOTTOM HALF OF THE PIPE WHICH FORMS THE FLOW CHANNEL.
14. PIPES INSTALLED WITHIN THE EXCAVATION MADE FOR THE MANHOLE SHALL BE CRADLED WITH CONCRETE TO THE LIMITS OF THE MANHOLE EXCAVATION. WHEN CLAY PIPE IS USED, THE CRADLE SHALL EXTEND TO THE FIRST JOINT OUTSIDE THE MANHOLE. THE CRADLE SHALL BE TERMINATED AT THE CLAY PIPE JOINT IN A MANNER WHICH WILL MAINTAIN THE FLEXIBILITY OF THE JOINT. BEST PRACTICE SHALL BE MAINTAINED THROUGHOUT THE EXCAVATION OR TO CLAY PIPE JOINTS APPROXIMATE TO MANHOLE SHALL BE INCLUDED IN THE UNIT PRICE BID FOR THE MANHOLE.

15. MANHOLE COVER CASTINGS AND MANHOLE FRAME CASTINGS SHALL CONFORM TO THE REQUIREMENTS AS INDICATED IN THE STANDARD SPECIFICATIONS AND AS SHOWN IN THE STANDARD DETAIL DRAWING.
16. THE VERTICAL DROP IN INSIDE DROP MANHOLES SHALL NOT EXCEED 2' FOR INFLOWING PIPES SIZED 12" OR SMALLER AND 2' FOR INFLOWING PIPES LARGER THAN 12". THE CROWNS OF INFLOWING PIPES SHALL NEVER BE SET LOWER THAN THE CROWN OF THE OUTFLOWING PIPE.
17. STANDARD MANHOLES AND STANDARD INSIDE DROP MANHOLES SHALL BE BID AS STANDARD MANHOLES FOR THE TYPE AND DIAMETER INDICATED. OUTSIDE DROP MANHOLES SHALL BE BID AS STANDARD OUTSIDE DROP MANHOLES FOR THE TYPE AND DIAMETER INDICATED. ALL MANHOLE DIAMETERS WILL BE 4' UNLESS INDICATED OTHERWISE.
18. A BRICK MASONRY COLLAR SHALL BE INSTALLED BETWEEN THE CAST IRON FRAME AND THE CONCENTRIC CONE. THE COLLAR WILL HAVE 6" WALLS AND A VERTICAL HEIGHT OF 6" MINIMUM AND 18" MAXIMUM. A 1" COAT OF MORTAR WILL BE PLASTERED ON THE OUTSIDE OF THE COLLAR.



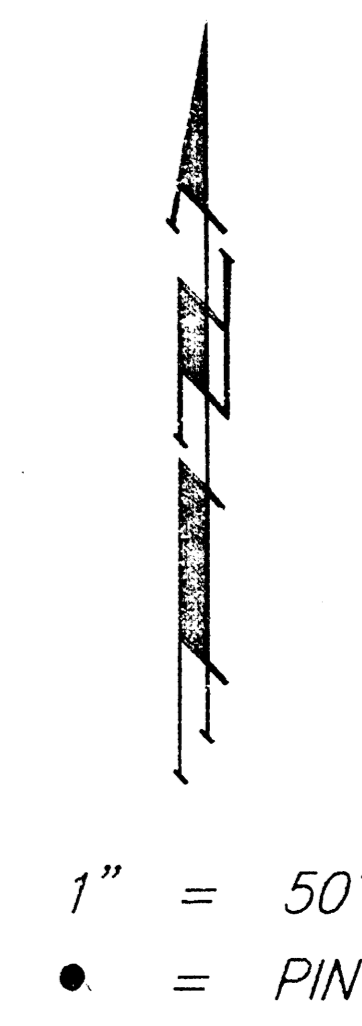
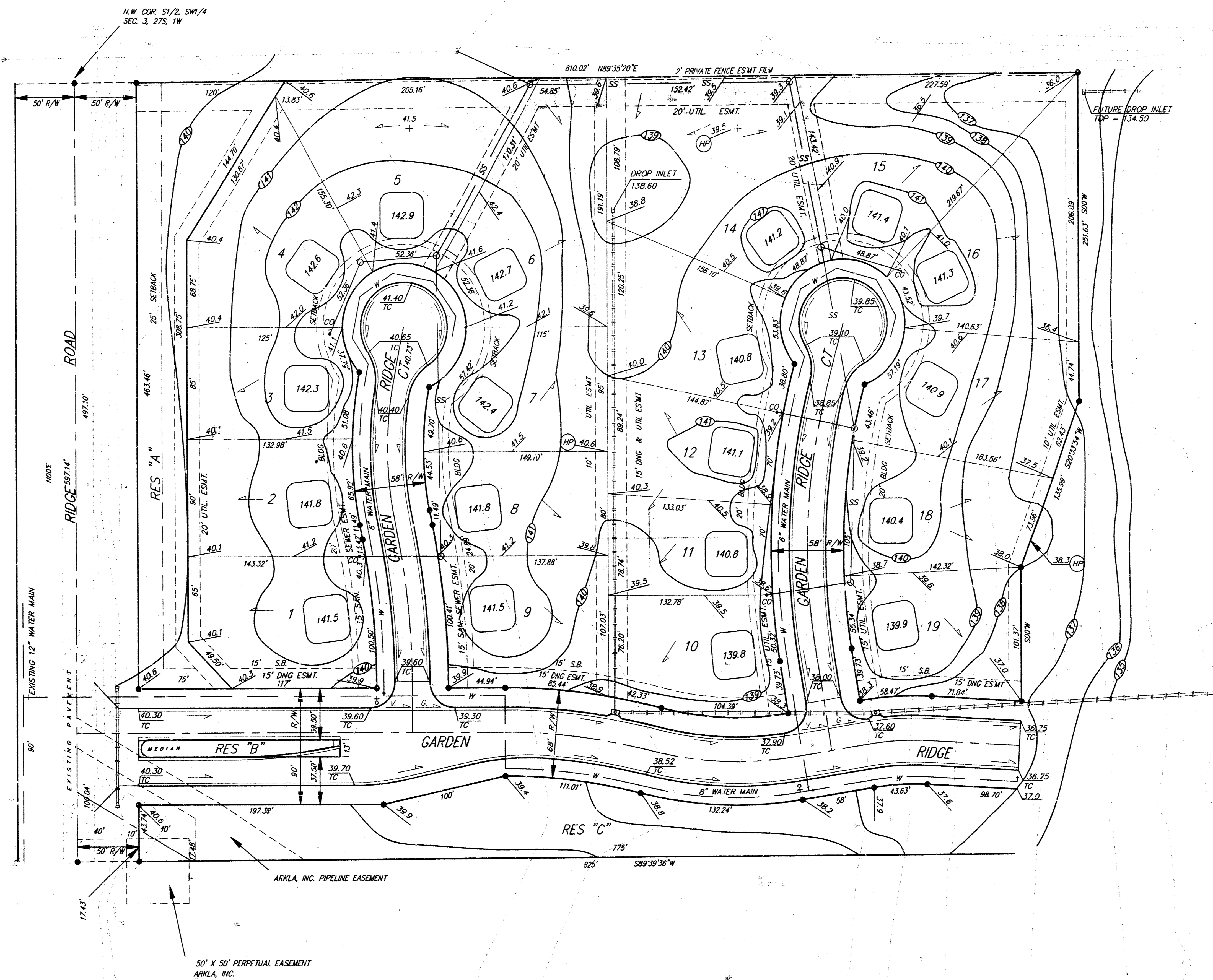
NOTES

1. 8" Lateral to be Air-Tested up to the Top of PVC Pipe, per Standard Specifications.
2. All PVC Pipe Fittings in Cleanout Riser Assembly shall be Solvent-Welded, Except 8" Pipe Cap.



8" CLEANOUT RISER ASSEMBLY DETAIL

CLEANOUT RISER ASSEMBLIES					
BAUGHMAN COMPANY P. A. ENGINEERING & SURVEYING 316/262-7271 • 315 ELLIS • WICHITA, KANSAS 67211					REV.
PROJECT NUMBER 458-76-245-82224-000-000-001					SHEET 5
DESIGN TCF	DRAWN KLK	APPROVED	DATE 8-5-92	SCALE NONE	OF 7



BENCHMARK: R.R. SPIKE IN P.P. 75' N. AND 58' E.
OF CENTER LINES OF 21ST NORTH AND
RIDGE ROAD.
ELEVATION: 143.30 CITY DATUM

NOTE:
Proposed Garage floor elevations are shown on the plans.
Variations from garage floor elevations must be approved
by Baughman Company, P.A. Contractor to set finish floor
elevation.

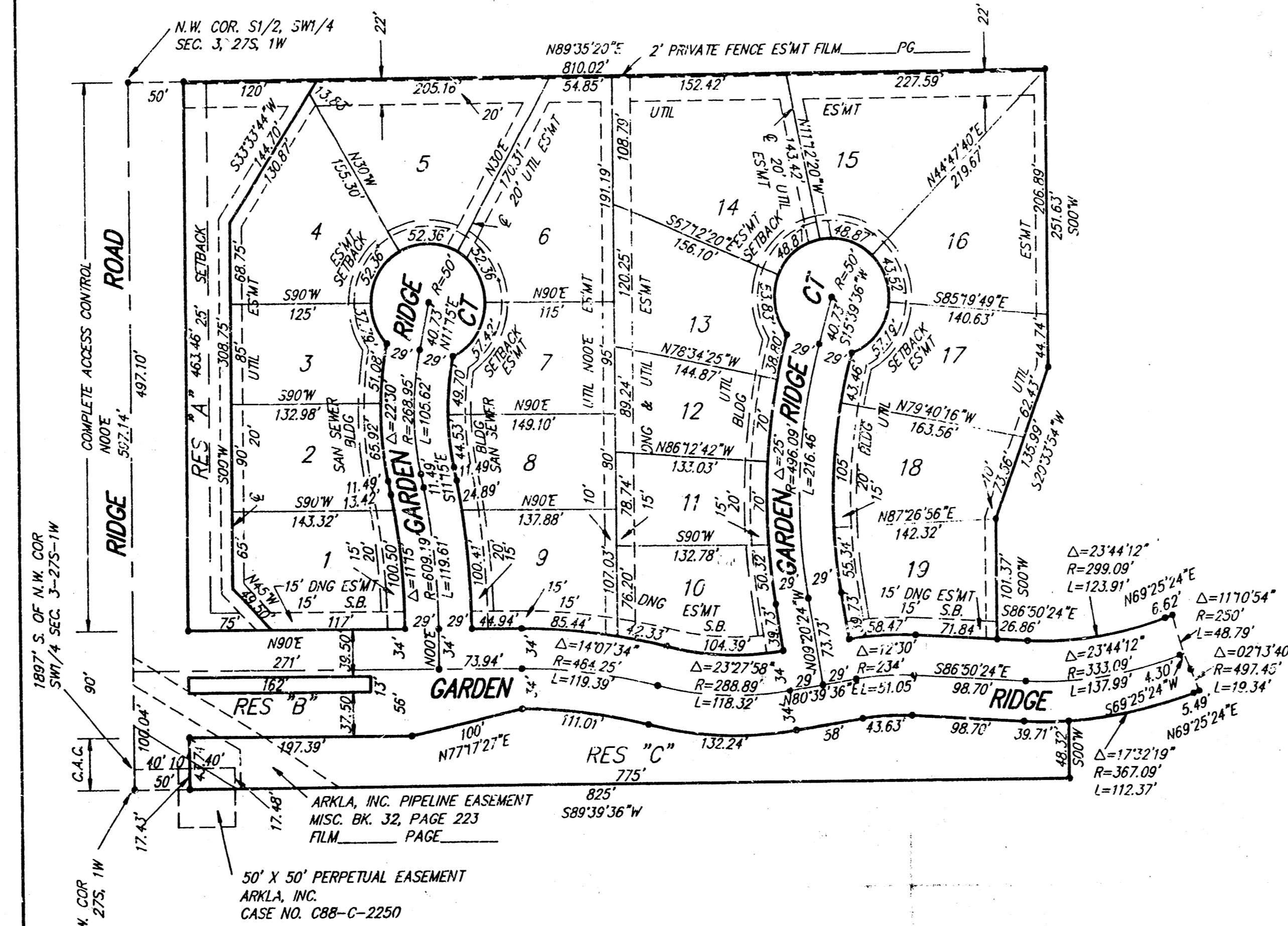
All street elevations shown on plans are for top of curb
(full height).
Contour elevations shown are for graphic representation of
drainage concept. Spot elevations shall take precedence
over contour lines.

Easement area to be graded.

LAKE RIDGE ADDITION LOT GRADING PLAN			
BAUGHMAN COMPANY P. A. ENGINEERING & SURVEYING 316/282-7271 • 315 ELLIS • WICHITA, KANSAS 67211			
PROJECT NUMBER			SHEET 6 OF 7
DESIGN P. J. M.	DRAWN KEVIN	APPROVED	DATE JULY 15, 1992
		SCALE 1" = 50'	

LAKE RIDGE ADDITION

WICHITA, SEDGWICK COUNTY, KANSAS



This plat of "LAKE RIDGE ADDITION", Wichita, Sedgwick County, Kansas has been submitted to and approved by the Wichita-Sedgwick County Metropolitan Area Planning Commission, Wichita, Kansas.
Dated this _____ day of _____, 1992.
Wichita-Sedgwick County Metropolitan Area Planning Commission

Chairman
Christopher J. Gabel

Secretary
Marvin S. Krout

This plat approved and all dedications shown hereon accepted by the City Council of the City of Wichita, Kansas, this _____ day of _____, 1992.

Mayor
Bob Knight

Deputy City Clerk
Pat Burnett

State of Kansas) SS This is to certify that this plat has been Sedgwick County) recorded in the office of the Register of Deeds, this _____ day of _____, 1992, at _____ o'clock _____ M., and is duly recorded.

Register of Deeds
Pat Kettler

Deputy
Ed Resa

State of Kansas) SS We, Baughman Company, P.A., Surveyors in Sedgwick County) the undersigned, have caused the land in the surveyors certificate to be platted into Lots, Reserves and streets to be known as "LAKE RIDGE ADDITION", Wichita, Sedgwick County, Kansas. Reserves "A" and "C" are hereby reserved for earthberms, landscaping, sidewalks, bike trails, lighting, irrigation, drainage, signage, gazebos, entry monuments, and utilities confined to easements. Reserve "B" is hereby reserved for entry monuments, landscaping, irrigation and as street and utility easement. The reserves shall be owned and maintained by the homeowners association for the addition. The utility easements are hereby granted as indicated for the construction and maintenance of all public utilities. The streets are hereby dedicated to and for the use of the public. All abutters rights of access to or from Ridge Road over and across the west line of Reserves "A" and "C" are hereby granted to the City of Wichita, Kansas.

Existing public easements and dedications being vacated by virtue of K.S.A. 12-512(b).

Baughman Company, P.A.
Date _____

Surveyor

Know all men by these presents: that we, the undersigned, have caused the land in the surveyors certificate to be platted into Lots, Reserves and streets to be known as "LAKE RIDGE ADDITION", Wichita, Sedgwick County, Kansas. Reserves "A" and "C" are hereby reserved for earthberms, landscaping, sidewalks, bike trails, lighting, irrigation, drainage, signage, gazebos, entry monuments, and utilities confined to easements. Reserve "B" is hereby reserved for entry monuments, landscaping, irrigation and as street and utility easement. The reserves shall be owned and maintained by the homeowners association for the addition. The utility easements are hereby granted as indicated for the construction and maintenance of all public utilities. The streets are hereby dedicated to and for the use of the public. All abutters rights of access to or from Ridge Road over and across the west line of Reserves "A" and "C" are hereby granted to the City of Wichita, Kansas.

R.B.R., Inc.

President
Randy Dean

State of Kansas) SS The foregoing instrument acknowledged before me, this _____ day of _____, 1992, by Randy Dean, President of R.B.R., Inc., on behalf of the corporation.

Notary Public

Entered on transfer record this _____ day of _____, 1992.

County Clerk
Dun Wright

We, the undersigned, holders of a mortgage on the above described property, do hereby consent to this plat of "LAKE RIDGE ADDITION", Wichita, Sedgwick County, Kansas.

Frazier State Bank of Maize

Vice-President
Chris A. Anderson

State of Kansas) SS The foregoing instrument acknowledged before me, this _____ day of _____, 1992, by Chris A. Anderson, Vice-President of Prairie State Bank of Maize, on behalf of the corporation.

Notary Public

7
10-02-1992
Notary Public