

Lat. 4, Main 19, S.W.I.
SANITARY SEWER IMPROVEMENTS
 to serve
Ridge Port Commercial Park
 CITY OF WICHITA, KANSAS

Michael E. Lindebak, P.E. City Engineer

Project Number

468-83388

OCA Number

743927

GENERAL NOTES:

1. Contractor will be required to provide notice to utility companies a minimum of twenty-four (24) hours prior to any excavation, as follows:

Kansas One-Call 687-2470

The Contractor must notify the following in case of an emergency:

- Cox Communications 262-4270
- Kansas Gas Service 1-888-482-4250
- Westar Energy 383-2450
- Aquila Energy 1-888-482-4950
- Southwestern Bell 283-2245
- City of Wichita Water Dept. 268-4563
- City of Wichita Sewer Maint. 269-4024
- City of Wichita Storm Sewer Maint. 268-4080
- City of Wichita Traffic Maint. 268-4034
- Conoco Pipeline Co. 1-800-231-2551
- Williams Pipeline Co. 529-6500
- Phillips Pipeline Co. 1-800-766-8230

2. Utility service lines, poles, valve boxes, manholes, and etcetera are to be adjusted as necessary by others prior to construction unless the plans specifically call for their adjustment by the Contractor or unless the plans specifically identify a utility to be adjusted by its owner during construction. Existing utilities and their location, as shown on the plans, represent the best information obtainable for design. The Contractor will be required to work around existing utilities within the right-of-way which do not conflict with proposed construction.

3. Rubble from the removal of miscellaneous structures and excess excavation which is to be wasted shall be disposed of on sites to be provided by the Contractor. These sites shall be approved by the Engineer as to suitability, appearance at site location. Locations, in the opinion of the Engineer, will leave an unsightly appearance will not be approved. All disposal sites must be approved by the Kansas Department of Health and Environment. Material either stockpiled or disposed of in a flood plain would require a Kansas State Board of Agriculture permit. Any material dumped in waters of the United States or wetlands is subject to U.S. Corps of Engineers permitting regulations. Any material buried or stockpiled beyond approved construction limits would require additional archaeological investigations unless buried in a previously approved borrow location.

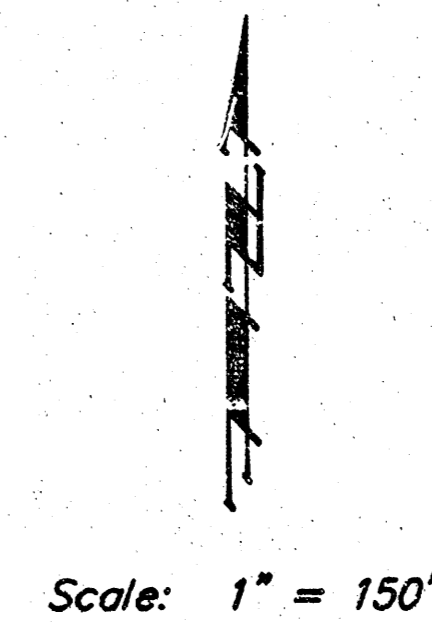
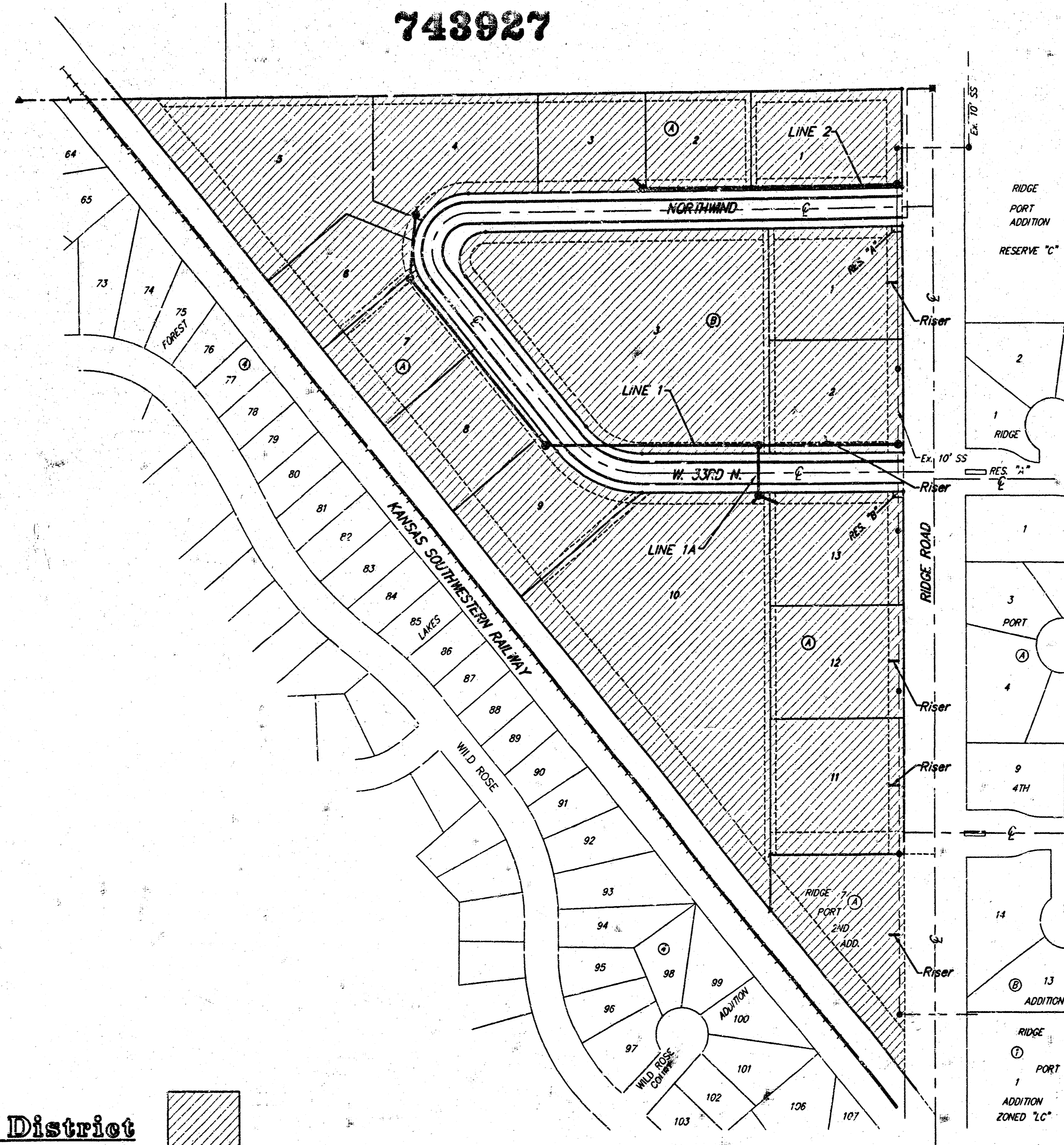
4. Trees and shrubs in public right-of-way which are in direct conflict with proposed new construction shall be removed by the Contractor with the Engineer's approval. Trees and shrubs which are not in direct conflict with proposed new construction shall be saved and protected from damage.

5. The Contractor shall give all property owners and/or tenants of developed property abutting the construction of this project a minimum of ten (10) days advance notice prior to start of construction.

6. The Contractor shall be responsible for preserving property irons. The Contractor will be required to re-establish any property irons which are damaged or destroyed by his construction operations. Such irons shall be re-established by a licensed land surveyor in accordance with state laws.

7. When connecting to existing manhole or stub, the contractor shall reshape manhole bottom or adjust the existing stub's alignment or elevation as necessary. Cost shall be subsidiary to project.

8. The Contractor shall be responsible for maintaining continuous flow of sewage through construction. Contractor's proposed method for maintaining sewage flow shall be approved by the Engineer. Cost of maintaining flow of sewage through construction will not be paid for directly and this cost shall be considered as subsidiary to the other day items of work.



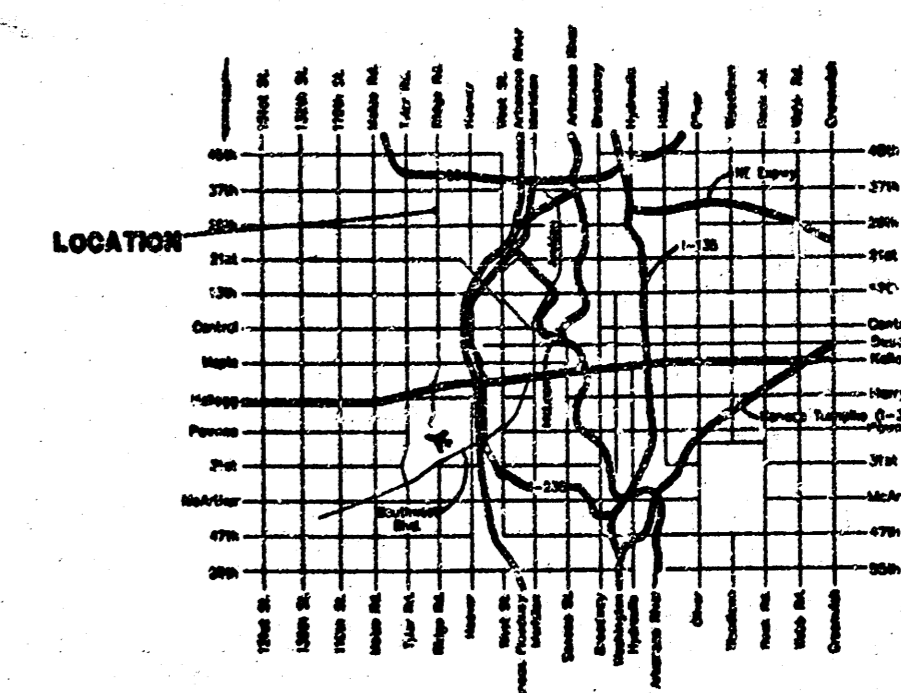
Sheet Index

| | |
|-------------------------|----|
| Title Sheet | 1 |
| Lines 1 & 1A | 2 |
| Line 1 | 3 |
| Line 2 | 4 |
| Riser Plan Sheet | 5 |
| Manhole Adjustments | 6 |
| Standard Manhole Detail | 7 |
| Shallow Manhole Detail | 8 |
| Ring & Cover Detail | 9 |
| Vertical Riser Detail | 10 |
| Copy of Plat | 11 |

Benchmark:

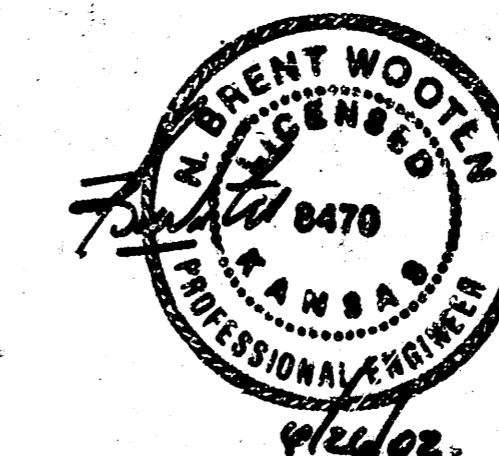
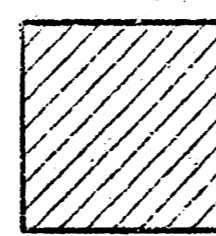
"□" cut on SE Corner of Bridge, 1/2 Mile N. of 28th Street North & Ridge Road. Elev. = 143.85 City Datum (1331.25 NGVD)

"PK Nail" 1.7 feet south & Westwind Bay & 59.9 feet east of Ridge Road. Elev. = 142.53 City Datum (1329.93 NGVD)



Vicinity Map

Benefit District

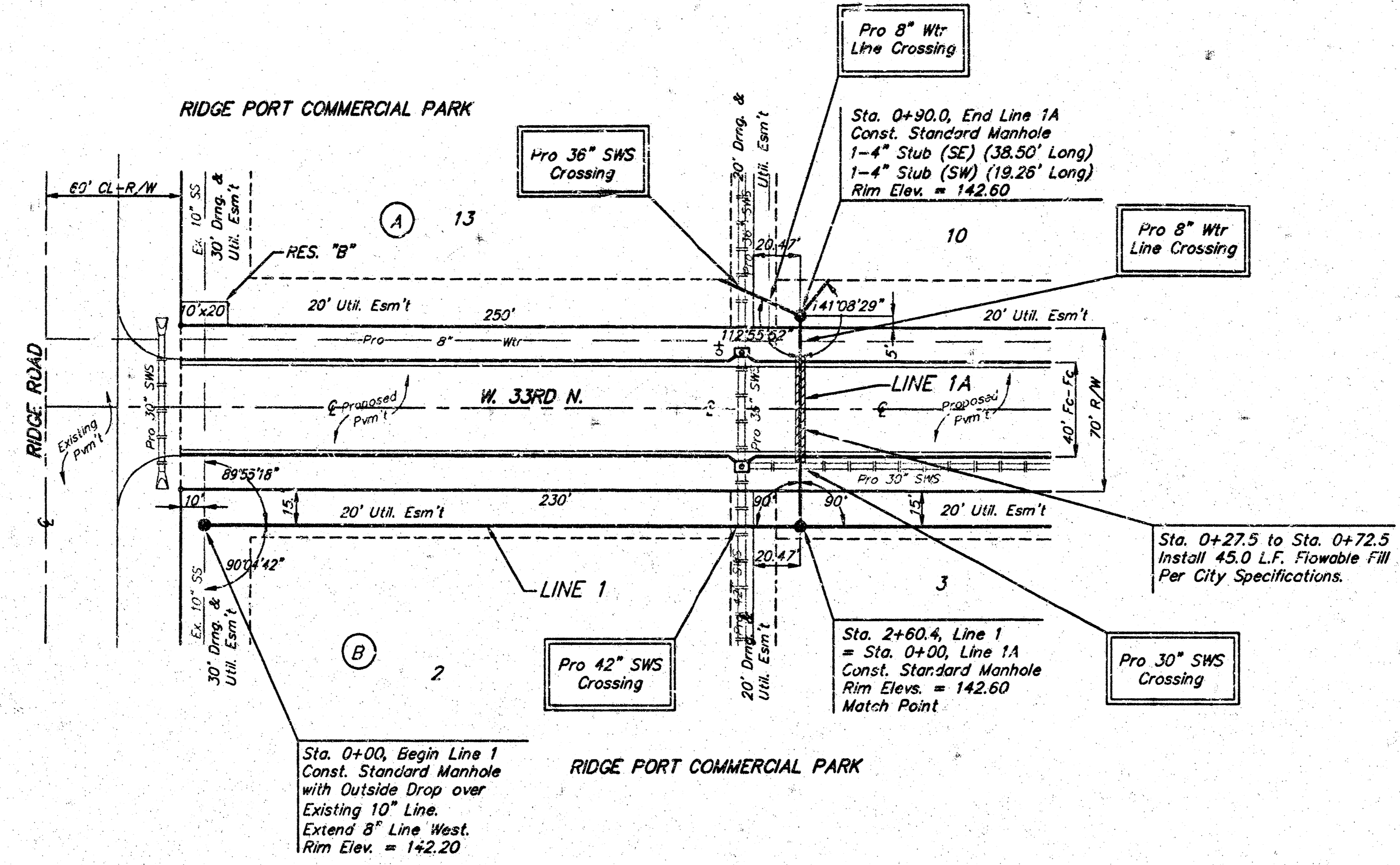


BAUGHMAN COMPANY P.A.
 ENGINEERING, SURVEYING, & PLANNING
 316-242-7721 • 315 ELLIS • WICHITA, KANSAS 67211

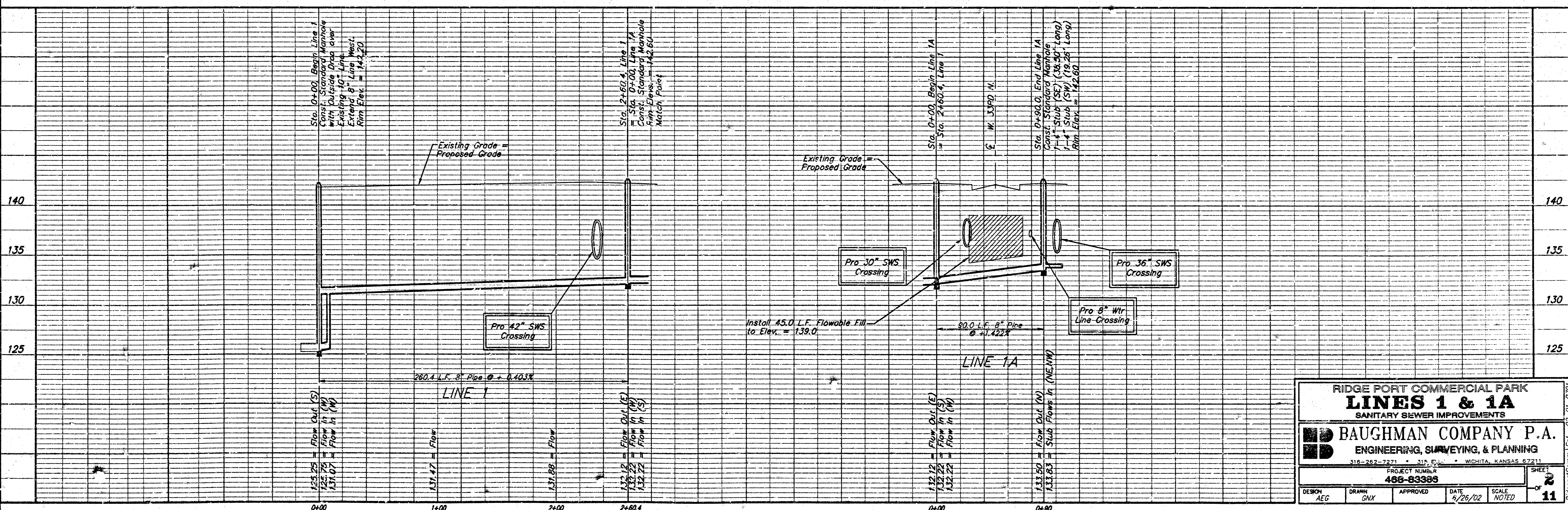
Benchmarks:

"□" cut on SE Corner of Bridge, 1/2 Mile N. of 29th Street North & Ridge Road. Elev. = 143.85 City Datum (1331.25 NGVD)

"PK Nail" 1.7 feet south & Westwind Bay & 59.9 feet east of E Ridge Road. Elev. = 142.53 City Datum (1329.93 NGVD)



Scale: 1" = 40' Horizontal
 1" = 5' Vertical
 * = Iron



**RIDGE PORT COMMERCIAL PARK
 LINES 1 & 1A
 SANITARY SEWER IMPROVEMENTS**

BAUGHMAN COMPANY P.A.
 ENGINEERING, SURVEYING, & PLANNING

318-282-7371 • 315 E. 10th • WICHITA, KANSAS 67211

PROJECT NUMBER: **468-83385**

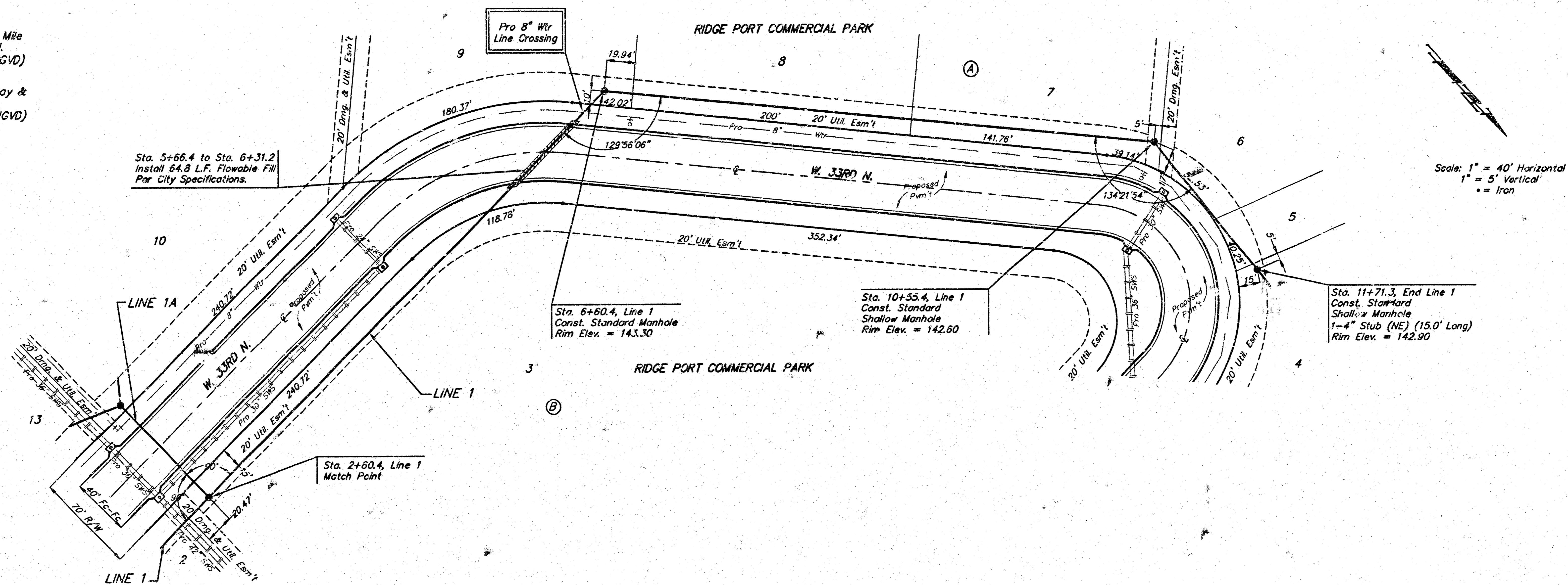
| | | | | |
|-------------|------------|-----------|---------------|--------------|
| DESIGN: AEG | DRAWN: GNX | APPROVED: | DATE: 4/26/02 | SCALE: NOTED |
|-------------|------------|-----------|---------------|--------------|

SHEET **2** OF **11**

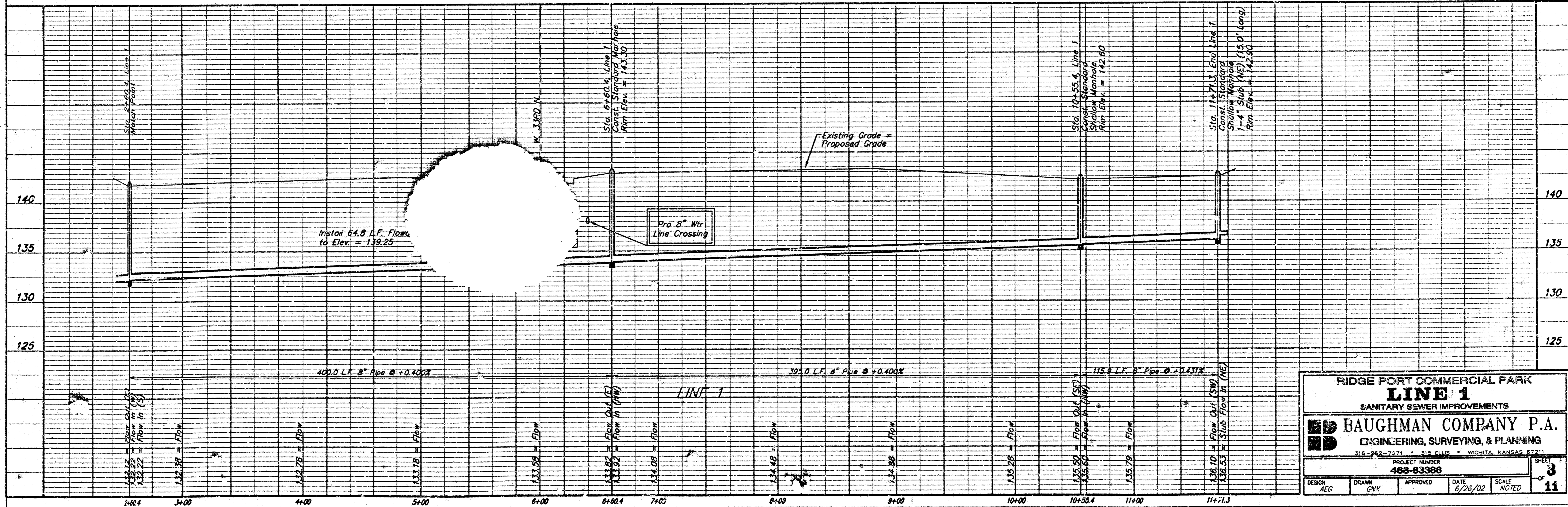
Benchmarks:

"□" cut on SE Corner of Bridge, 1/2 Mile N. of 29th Street North & Ridge Road.
Elev. = 143.85 City Datum (1,331.25 NGVD)

"PK Nail" 1.7 feet south L Westwind Bay & 59.9 feet east of L Ridge Road.
Elev. = 142.53 City Datum (1,329.93 NGVD)



Scale: 1" = 40' Horizontal
1" = 5' Vertical
- = Iron



RIDGE PORT COMMERCIAL PARK
LINE 1
SANITARY SEWER IMPROVEMENTS

BAUGHMAN COMPANY P.A.
ENGINEERING, SURVEYING, & PLANNING
318 - 242 - 7221 • 315 ELM • WICHITA, KANSAS 67211

PROJECT NUMBER
488-83388

| | | | | |
|---------------|--------------|----------|-----------------|----------------|
| DESIGN AEG | DRAWN CNY | APPROVED | DATE 6/26/02 | SCALE NOTED |
|---------------|--------------|----------|-----------------|----------------|

SHEET
3
OF
11

Benchmarks:

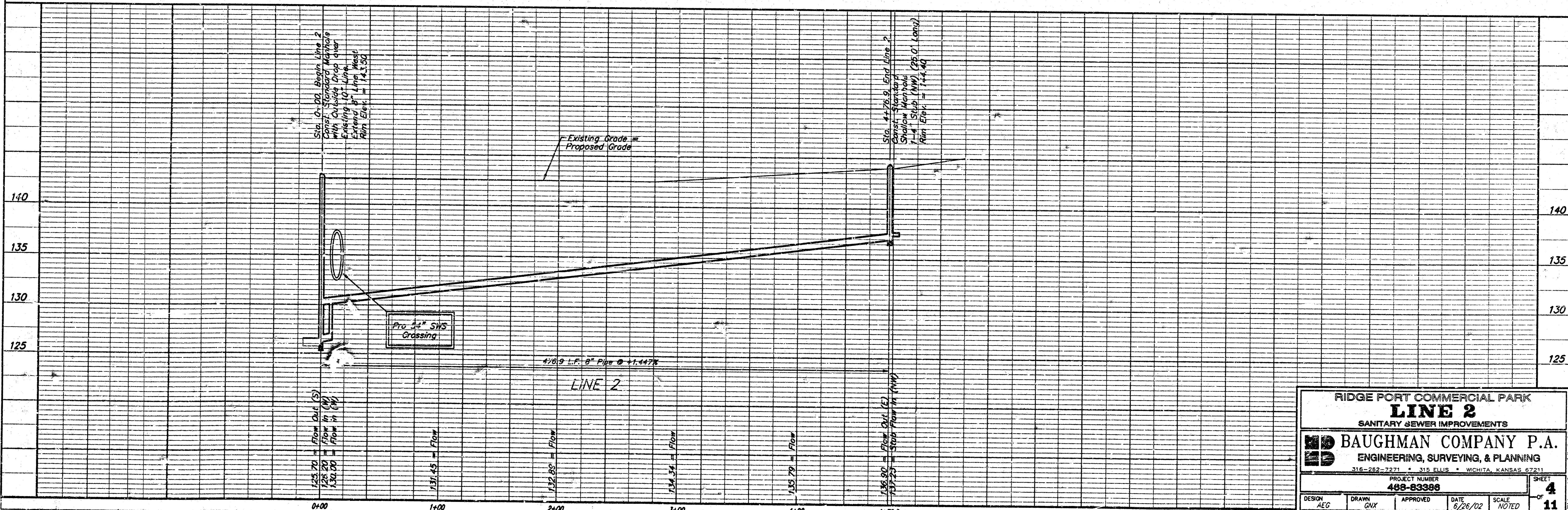
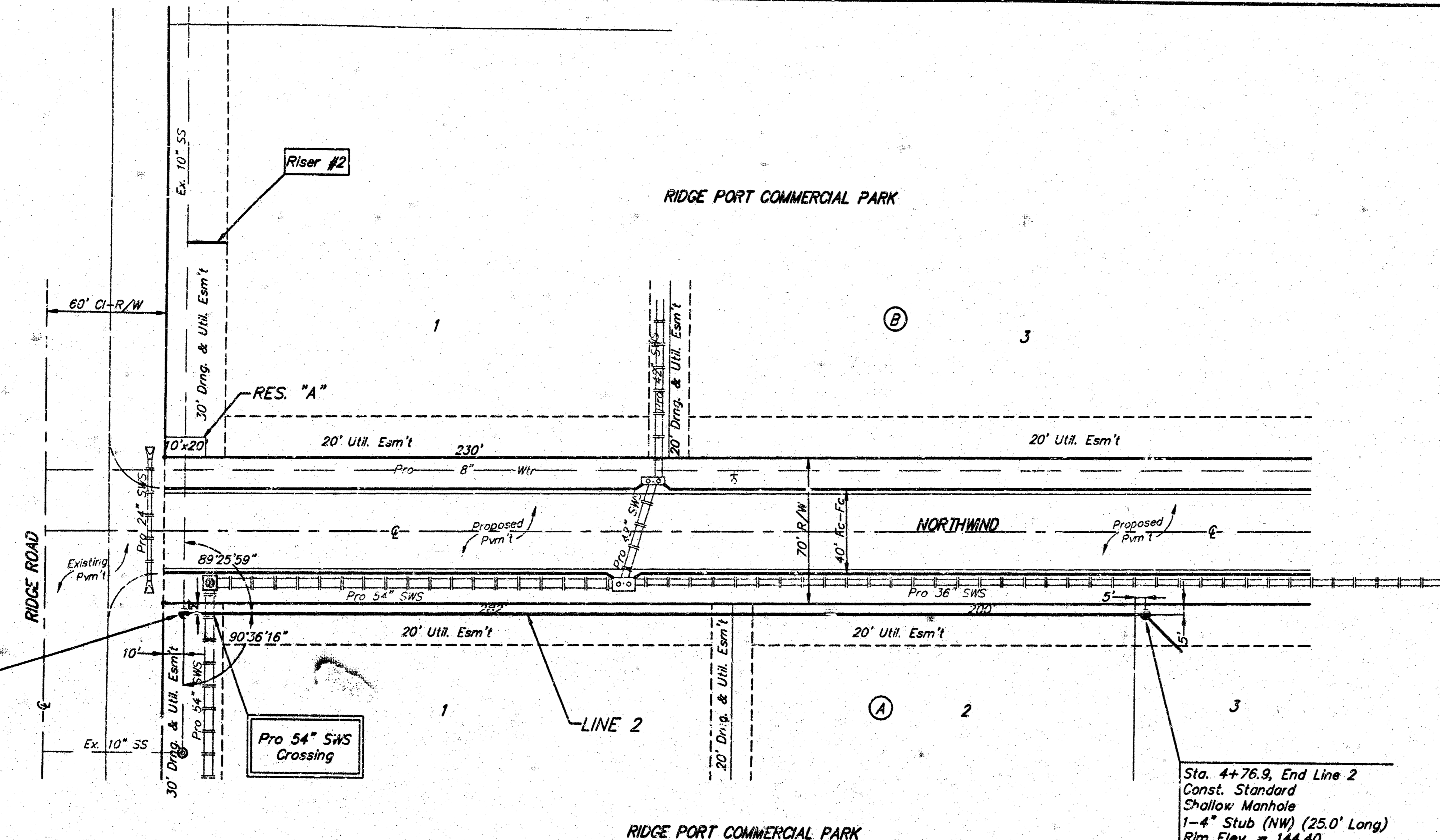
"□" cut on SE Corner of Bridge, 1/2 Mile N. of 29th Street North & Ridge Road.
Elev = 143.85 City Datum (1331.25 NGVD)

"PK Nail" 1.7 feet south of Westwind Bay & 59.9 feet east of Ridge Road.
Elev. = 142.53 City Datum (1329.93 NGVD)

Sta. 0+00, Begin Line 2
Const. Standard Manhole
with Outside Drop over
Existing 10" Line.
Extend 8" Line West.
Rim Elev. = 143.50

Sta. 4+76.9, End Line 2
Const. Standard
Shallow Manhole
1-4" Stub (NW) (25.0' Long)
Rim Elev. = 144.40

Scale: 1" = 40' Horizontal
1" = 5' Vertical
• = Iron



| | | | |
|--|-------|----------|---------|
| RIDGE PORT COMMERCIAL PARK | | | |
| LINE 2 | | | |
| SANITARY SEWER IMPROVEMENTS | | | |
| BAUGHMAN COMPANY P.A. | | | |
| ENGINEERING, SURVEYING, & PLANNING | | | |
| 316-282-7271 • 315 ELLIS • WICHITA, KANSAS 67211 | | | |
| PROJECT NUMBER | | SHEET | |
| 488-83388 | | 4 | |
| DESIGN | DRAWN | APPROVED | DATE |
| AEG | GVY | | 6/26/02 |
| SCALE | | NOTED | |
| | | 11 | |

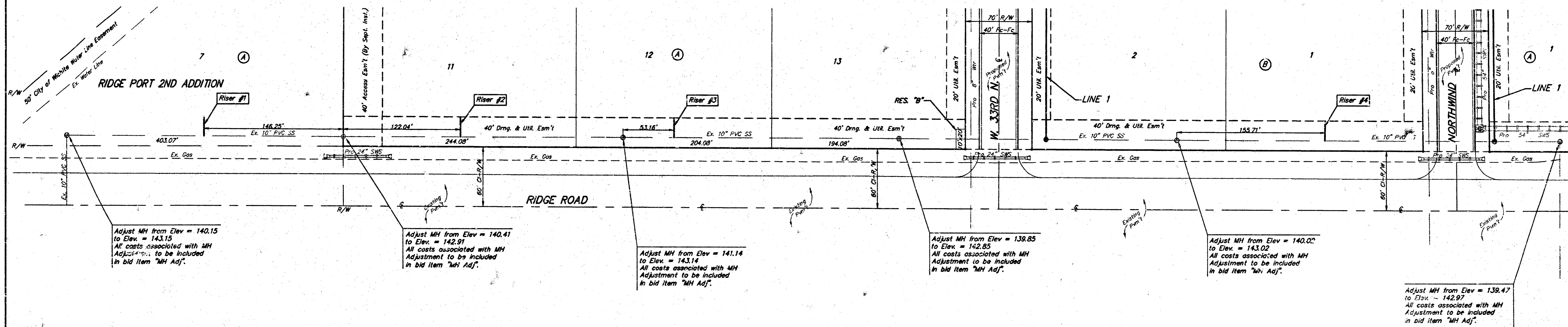
Benchmarks:

"□" cut on SE Corner of Bridge, 1/2 Mile N. of 29th Street North & Ridge Road. Elev. = 143.85 City Datum (1331.25 NGVD)

"PK Nail" 1.7 feet south L Westwind Bay & 59.9 feet east of L Ridge Road. Elev. = 142.53 City Datum (1329.93 NGVD)

Scale: 1" = 80' Horizontal
 = Iron

RIDGE PORT COMMERCIAL PARK



Adjust MH from Elev = 140.15 to Elev. = 143.15
 All costs associated with MH Adjustment to be included in bid item "MH Adj".

Adjust MH from Elev = 140.41 to Elev. = 142.91
 All costs associated with MH Adjustment to be included in bid item "MH Adj".

Adjust MH from Elev = 141.14 to Elev. = 143.14
 All costs associated with MH Adjustment to be included in bid item "MH Adj".

Adjust MH from Elev = 139.85 to Elev. = 142.85
 All costs associated with MH Adjustment to be included in bid item "MH Adj".

Adjust MH from Elev = 140.02 to Elev. = 143.02
 All costs associated with MH Adjustment to be included in bid item "MH Adj".

Adjust MH from Elev = 139.47 to Elev. = 142.97
 All costs associated with MH Adjustment to be included in bid item "MH Adj".

SEWER SERVICE TABLE

| NUMBER | TYPE | LOCATION | | | STATION DIRECTION | FOR INFORMATION ONLY | |
|--------|---------------------|----------|-----------|----------|-------------------|----------------------------|------------|
| | | LOT NO. | BLOCK NO. | LINE NO. | | APPROXIMATE LENGTH 4" PIPE | |
| 1 | 10" x 4" Tee Saddle | 7 | A | | | VERTICAL | HORIZONTAL |
| 2 | 10" x 4" Tee Saddle | 11 | A | | | 13.0' | 20.0' |
| 3 | 10" x 4" Tee Saddle | 12 | A | | | 13.0' | 20.0' |
| 4 | 10" x 4" Tee Saddle | 1 | B | | | 10.5' | 20.0' |

NOTE: Vertical Riser Pipes shall be extended to 2' minimum above ground water elevation and 4' minimum below proposed ground elevation.

RIDGE PORT COMMERCIAL PARK
RISER PLAN
 SANITARY SEWER IMPROVEMENTS

BAUGHMAN COMPANY P.A.
 ENGINEERING, SURVEYING, & PLANNING
 318-262-2721 • 315 E. 15th • WICHITA, KANSAS 67211

PROJECT NUMBER: **468-83386**

DESIGN: AEG DRAWN: GMY APPROVED: _____ DATE: 6/26/02 SCALE: NOTED

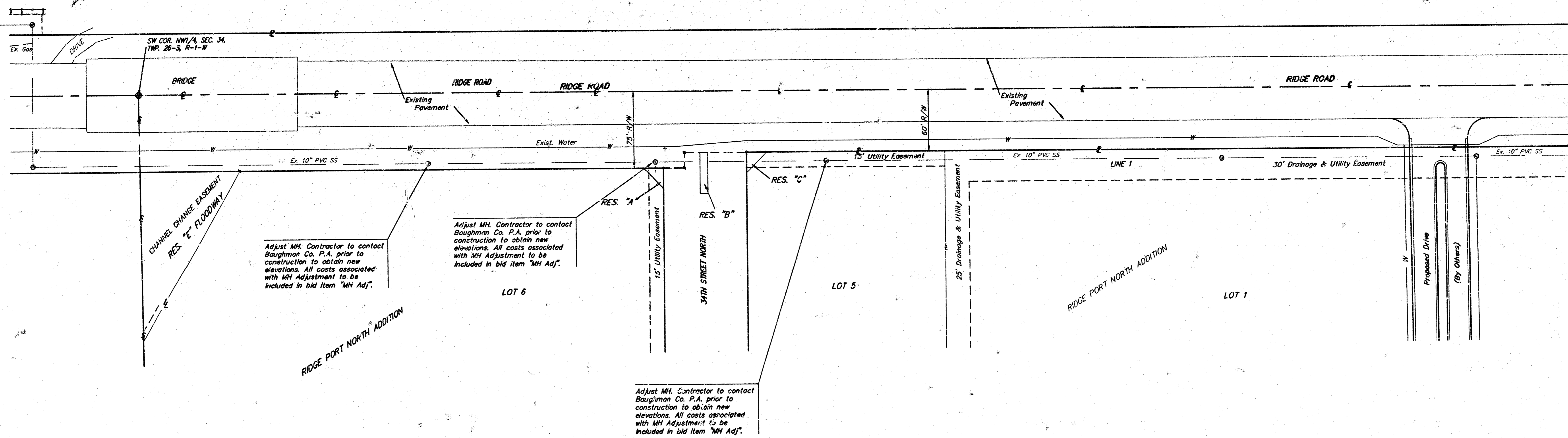
SHEET **5** OF **11**

Benchmarks:

"□" cut on SE Corner of Bridge, 1/2 Mile N. of 29th Street North & Ridge Road.
Elev. = 143.85 City Datum (1331.25 NGVD)

"PK Nail" 1.7 feet south L Westwind Bay & 59.9 feet east of L Ridge Road.
Elev. = 142.53 City Datum (1329.93 NGVD)

Scale: 1" = 50' Horizontal
1" = 10'



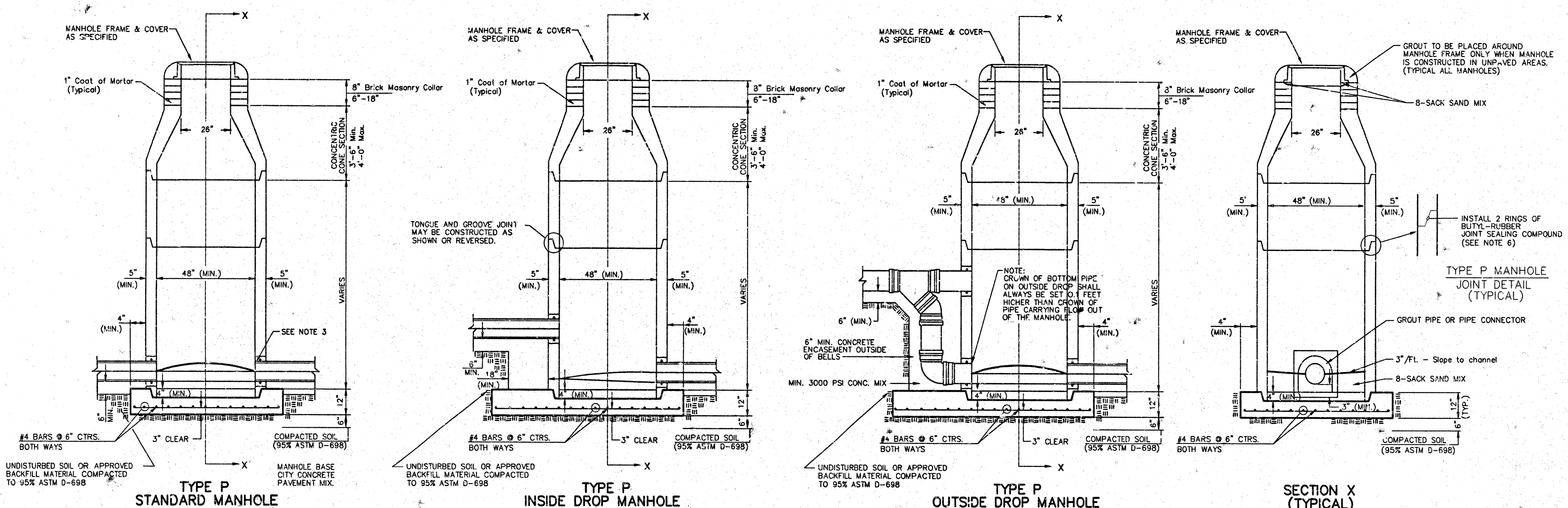
RIDGE PORT COMMERCIAL PARK
MH ADJUSTMENTS
 SANITARY SEWER IMPROVEMENTS

BAUGHMAN COMPANY P.A.
 ENGINEERING, SURVEYING, & PLANNING
 315-282-7271 • 315 ELLIS • WICHITA, KANSAS 67211

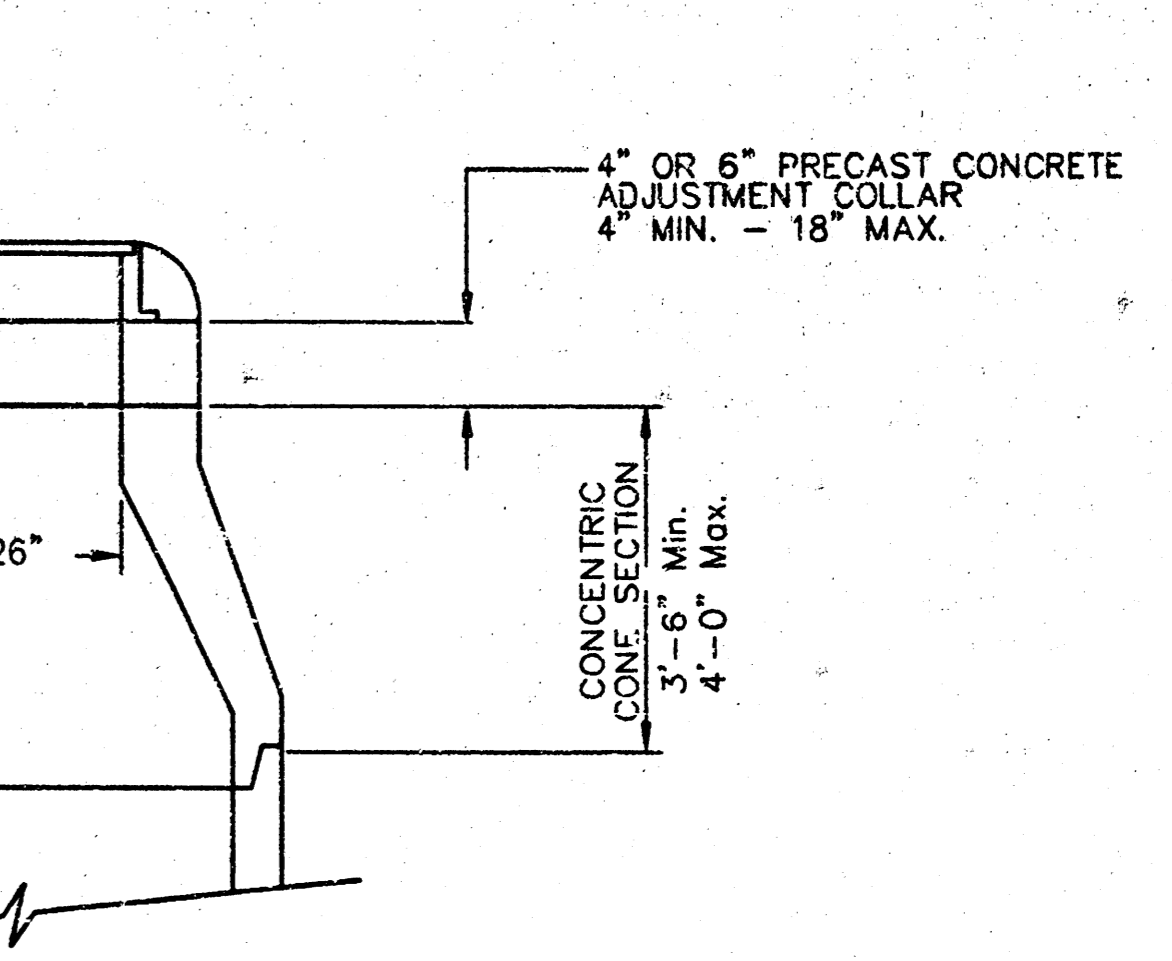
PROJECT NUMBER
488-85366

DESIGN: AEG DRAWN: CNX APPROVED: DATE: 6/26/02 SCALE: NOTED SHEET: **6** OF: **11**

SEWER APPURTENANCES DETAILS



- GENERAL NOTES**
- PRECAST MANHOLE NOTES**
1. ALL PRECAST CONCRETE MANHOLE SECTIONS SHALL CONFORM TO THE LATEST REVISIONS OF A.S.T.M. C478 AS MODIFIED BY THE SPECIFICATIONS.
 2. NON-SHRINK GROUT SHALL BE NON-METALLIC TYPE.
 3. APPROVED FLEXIBLE WATERSTOP GASKETS SHALL BE INSTALLED TO JOIN THE SEWER TO THE MANHOLE WALL WHEN A.B.S. COMPOSITE PIPE OR P.V.C. PIPE IS USED. FOR OTHER TYPES OF PIPE THE SEWER SHALL BE GROUTED IN PLACE WITH NON-SHRINK GROUT. THE SEWER PIPE SHALL BE SUPPORTED WITH CONCRETE ENCASEMENT A MINIMUM OF 3 FEET FROM THE MANHOLE WALL AND TO THE FIRST JOINT FOR V.C.P. SUCH THAT THE JOINT REMAINS FLEXIBLE.
 4. ALL INSIDE SURFACES OF THE CONCRETE MANHOLE WHICH WOULD BE EXPOSED TO SEWER GAS SHALL BE COATED WITH 2 COATS TRENCC SERIES 66 %-BUILD EPOXYLINE, DRY THICKNESS OF 8 MILS (MIN.).
 5. EXTERIOR MANHOLE WALLS SHALL BE COATED WITH 1 COAT MOBILARMA 633 BITUMINOUS COATING.
 6. JOINT SEALING COMPOUND SHALL BE KENT SEAL NO. 2 OR APPROVED EQUAL.
 7. PRECAST MANHOLES SHALL BE SET AT LEAST 4 INCHES INTO THE MANHOLE BASE.
 8. TOP OF MANHOLE FLOOR SLAB SHALL BE AT LEAST 3 INCHES BELOW THE FLOW LINE OF THE OUTLET PIPE TO INSURE SUFFICIENT MINIMUM THICKNESS OF SHAPED INVERT.
 9. LIFTING HOLES SHALL BE FILLED WITH NON-SHRINK GROUT AND THE INTERIOR SURFACE COATED AS SPECIFIED.
 10. MORTAR USED IN MASONRY CONSTRUCTION SHALL CONTAIN 8 SACKS OF CEMENT PER CUBIC YARD. CONCRETE USED IN MANHOLE BASES SHALL CONFORM TO THE REQUIREMENTS OF CONCRETE FOR CONCRETE PAVING SPECIFICATIONS USING CITY CONCRETE PAVEMENT MIX WITHOUT AIR ENTRAINING ADMIXTURE. MORTAR SHALL BE PLACED AROUND THE MANHOLE RING AS SHOWN ON THE DRAWINGS WHEN MANHOLES ARE CONSTRUCTED IN UNPAVED AREAS. MANHOLES CONSTRUCTED WHERE PIPE SIZES ARE SMALLER THAN 24" SHALL HAVE AN INSIDE DIAMETER OF 4". MANHOLES CONSTRUCTED WHERE PIPE SIZES ARE 24" OR LARGER SHALL HAVE AN INSIDE DIAMETER OF 5". COMPLETED MANHOLE SHALL BE WITHOUT LEAKS AND WATER TIGHT.
 11. REINFORCING STEEL SHALL BE INSTALLED IN THE MANHOLE BASES AND SHALL CONSIST OF NO. 4 BARS PLACED ON 6" CENTERS IN BOTH DIRECTIONS. THE MANHOLE BASE REINFORCEMENT SHALL BE PLACED AT LEAST 3" ABOVE THE BOTTOM OF THE MANHOLE BASE. ALL COSTS FOR FURNISHING AND INSTALLING REINFORCING STEEL SHALL BE INCLUDED IN THE UNIT PRICE BID FOR THE MANHOLE.
 12. OPENINGS SHALL BE CUT INTO THE MANHOLE WALL WHEN OUTSIDE DROPS ARE CONSTRUCTED ON EXISTING MANHOLES. SUCH OPENINGS CUT INTO EXISTING MANHOLES SHALL BE AS SMALL AS PRACTICAL TO FACILITATE INSTALLING AND GROUTING THE NEW PIPE IN PLACE. WATERSTOP GASKETS SHALL BE USED WITH P.V.C. AND A.B.S. COMPOSITE PIPE. THE NEW PIPE SHALL BE GROUTED INTO THE OPENING USING AN APPROVED NON-SHRINK GROUT FOR THE FULL MANHOLE WALL THICKNESS. THE EXTERIOR OF THE COMPLETED CONNECTION SHALL BE SEALED WITH AN APPROVED BITUMINOUS COATING SUCH THAT THE CONNECTION WILL BE WATER TIGHT. FLOOR OF MANHOLE SHALL BE MODIFIED TO FORM NEW FLOW CHANNEL FOR THE NEW CONNECTION AS INDICATED BY THE DRAWING. THIS WORK, INCLUDING MODIFICATION OF MANHOLE FLOOR, SHALL BE PAID FOR AT THE UNIT PRICE BID FOR OUTSIDE DROP STACK CONSTRUCTED ON EXISTING MANHOLE.
 13. THE FLOORS OF ALL MANHOLES SHALL BE SHAPED WITH FLOW CHANNELS SUCH THAT THE MANHOLES WILL BE SELF CLEANING AND FREE OF AREAS WHERE SOLIDS COULD BE DEPOSITED AS SEWAGE FLOWS THROUGH THE MANHOLE FROM ALL INLET PIPES TO THE OUTLET PIPE. FLOW CHANNELS SHALL BE FIGURED TO MATCH THE BOTTOM HALVES OF THE INFLOWING PIPES AND THE OUTFLOWING PIPE AS SHOWN BY THE DRAWINGS EXCEPT FOR INSIDE DROP MANHOLES. FLOW CHANNELS FOR INSIDE DROP MANHOLES SHALL BE CONSTRUCTED AS INDICATED BY THE DRAWING. MANHOLE FLOORS SHALL HAVE SLOPES OF 3 INCHES PER FOOT IN THE AREAS OUTSIDE OF THE FLOW CHANNELS SLOPED TOWARD THE FLOW CHANNELS. PIPES LAID THROUGH MANHOLES SHALL HAVE THE TOP HALF REMOVED TO NEAT LINES FOR THE FULL INSIDE DIAMETER OF THE MANHOLE. MANHOLE FLOORS SHALL THEN BE SHAPED AROUND THE BOTTOM HALF OF THE PIPE WHICH FORMS THE FLOW CHANNEL.
 14. PIPES INSTALLED WITHIN THE EXCAVATION MADE FOR THE MANHOLE SHALL BE CRADLED WITH CONCRETE TO THE LIMITS OF THE MANHOLE EXCAVATION. WHEN CLAY PIPE IS USED, THE CRADLE SHALL EXTEND TO THE FIRST JOINT OUTSIDE THE MANHOLE. THE CRADLE SHALL BE TERMINATED AT THE CLAY PIPE JOINT IN A MANNER WHICH WILL MAINTAIN THE FLEXIBILITY OF THE JOINT. COST OF CRADLE WITHIN MANHOLE EXCAVATION OR TO CLAY PIPE JOINTS ADJACENT TO MANHOLE SHALL BE INCLUDED IN THE UNIT PRICE BID FOR THE MANHOLE.
 15. MANHOLE COVER CASTINGS AND MANHOLE FRAME CASTINGS SHALL CONFORM TO THE REQUIREMENTS AS INDICATED IN THE STANDARD SPECIFICATIONS AND AS SHOWN IN THE STANDARD DETAIL DRAWING.
 16. THE VERTICAL DROP IN INSIDE DROP MANHOLES SHALL NOT EXCEED 2' FOR INFLOWING PIPES SIZED 12" OR SMALLER AND 2' FOR INFLOWING PIPES LARGER THAN 12". THE CROWNS OF INFLOWING PIPES SHALL NEVER BE SET LOWER THAN THE CROWN OF THE OUTFLOWING PIPE.
 17. STANDARD MANHOLES AND STANDARD INSIDE DROP MANHOLES SHALL BE BID AS STANDARD MANHOLES FOR THE TYPE AND DIAMETER INDICATED. OUTSIDE DROP MANHOLES SHALL BE BID AS STANDARD OUTSIDE DROP MANHOLES FOR THE TYPE AND DIAMETER INDICATED. ALL MANHOLE DIAMETERS WILL BE 4' UNLESS INDICATED OTHERWISE.
 18. A BRICK MASONRY COLLAR SHALL BE INSTALLED BETWEEN THE CAST IRON FRAME AND THE CONCENTRIC CONE. THE COLLAR WILL HAVE 8" WALLS AND A VERTICAL HEIGHT OF 6" MINIMUM AND 18" MAXIMUM. A 1" COAT OF MORTAR WILL BE PLASTERED ON THE OUTSIDE OF THE COLLAR. THE USE OF PRE-CAST CONCRETE SPACERS FOR MANHOLE TOP ADJUSTMENT IS ALSO ALLOWED.



ALTERNATE CONSTRUCTION IN UNPAVED AREAS

STD. MANHOLE DETAILS
SEWER APPURTENANCES

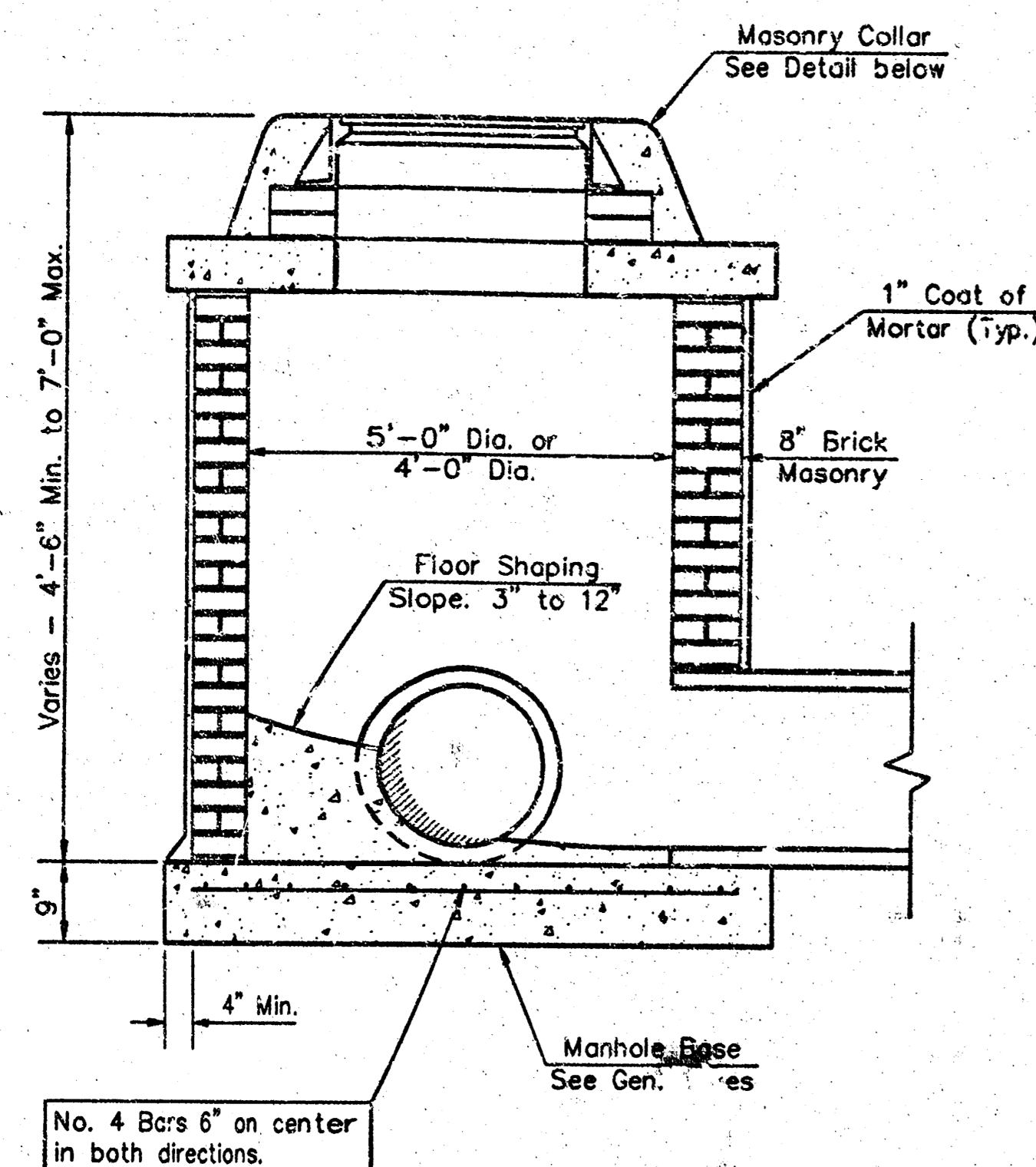
BAUGHMAN COMPANY P.A.
ENGINEERING, SURVEYING, & PLANNING
316-282-7271 • 315 ELLIS • WICHITA, KANSAS 67211

PROJECT NUMBER: 488-83386

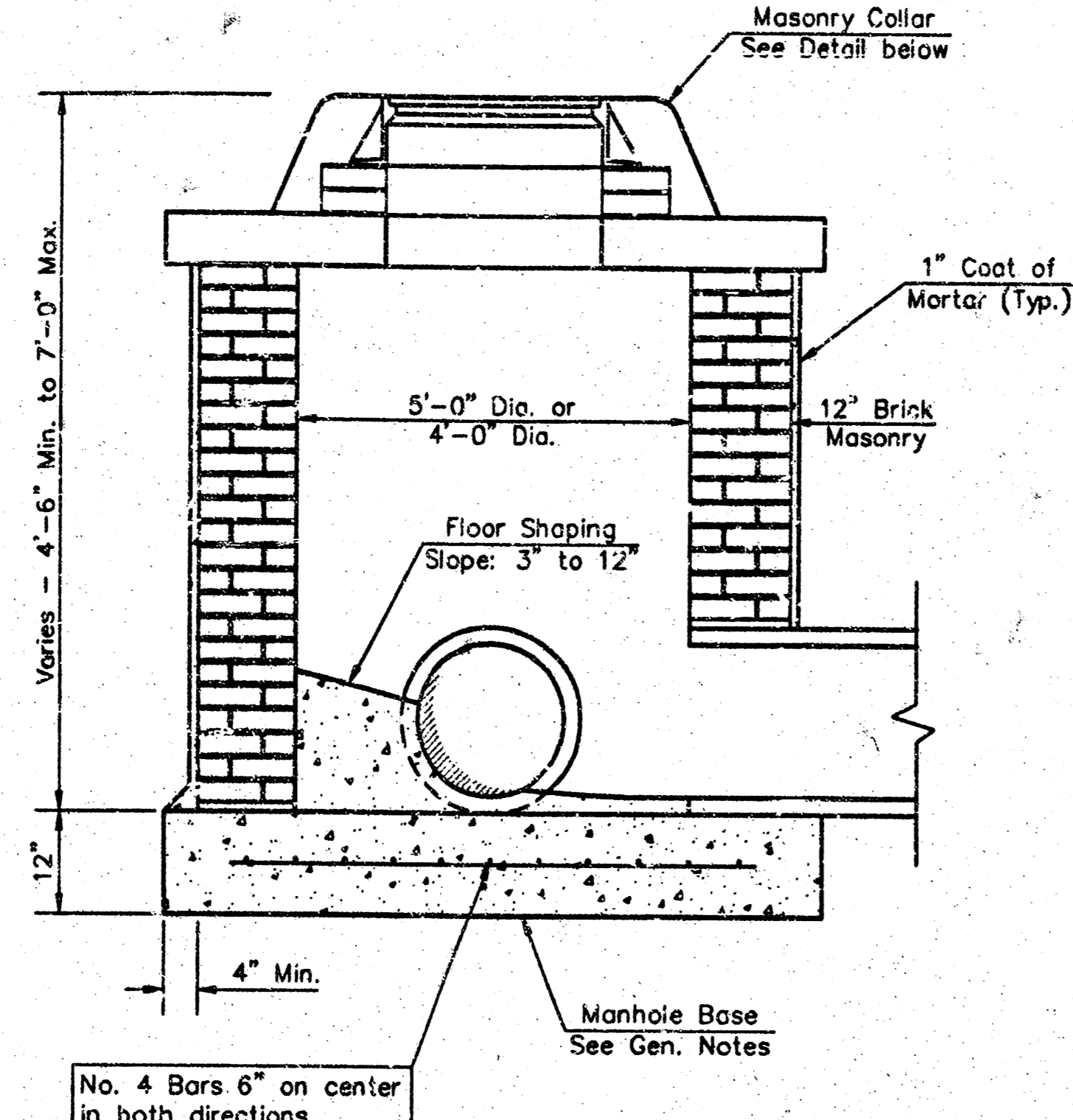
DESIGN STAFF: _____ DRAWN BY: _____ APPROVED: _____ DATE: _____ SCALE: NONE

SHEET 7 OF 11

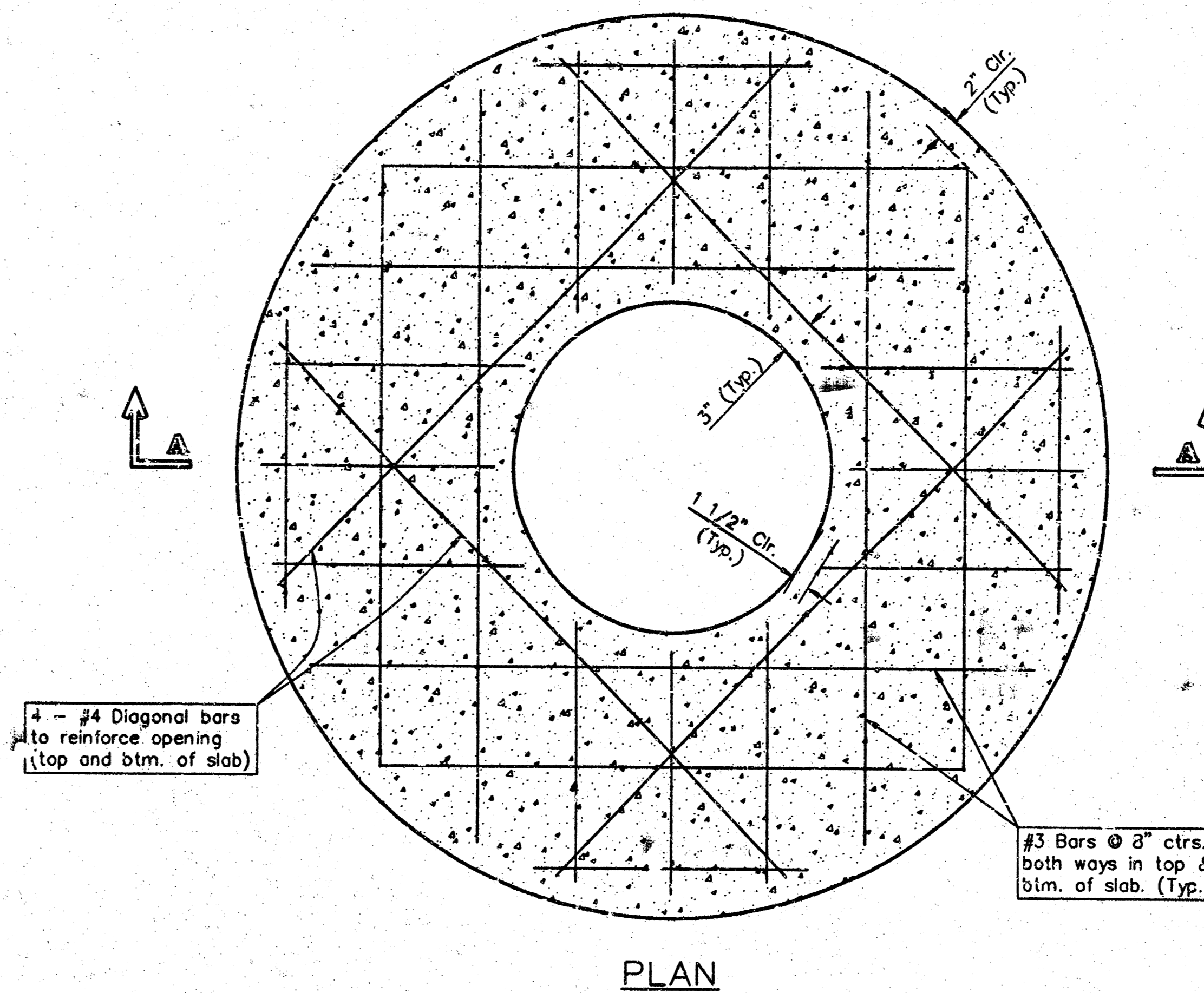
Std. Manhole



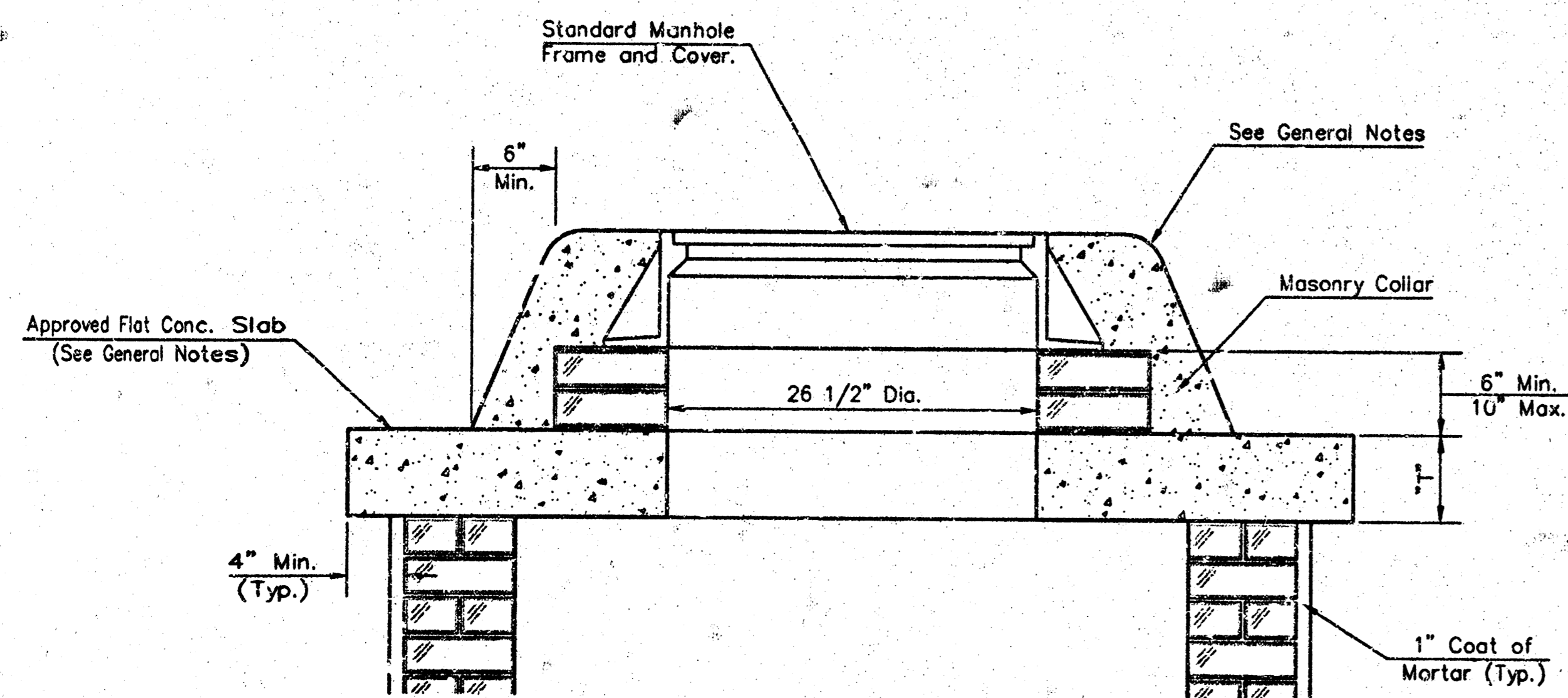
SHALLOW TYPE "A" MANHOLE



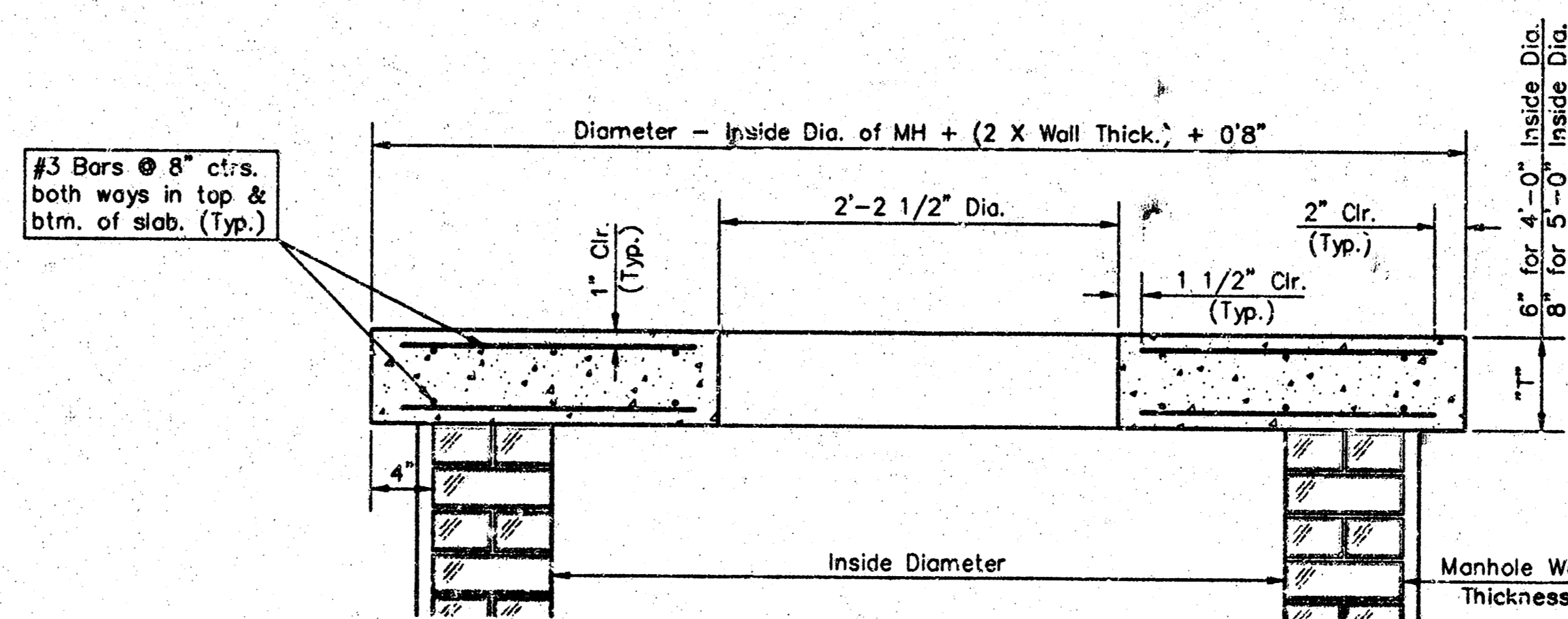
SHALLOW TYPE "B" MANHOLE



PLAN

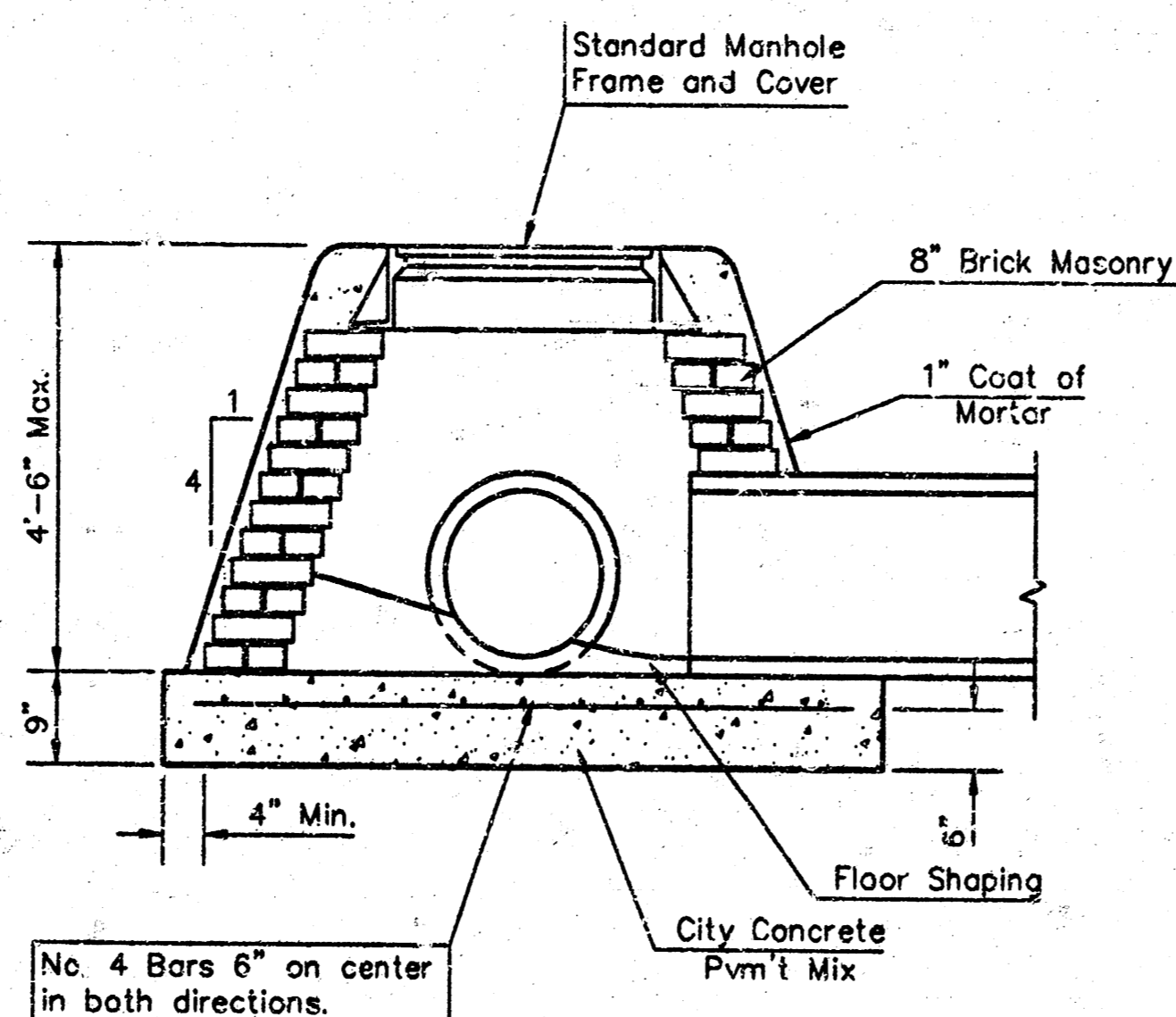


MASONRY COLLAR DETAIL

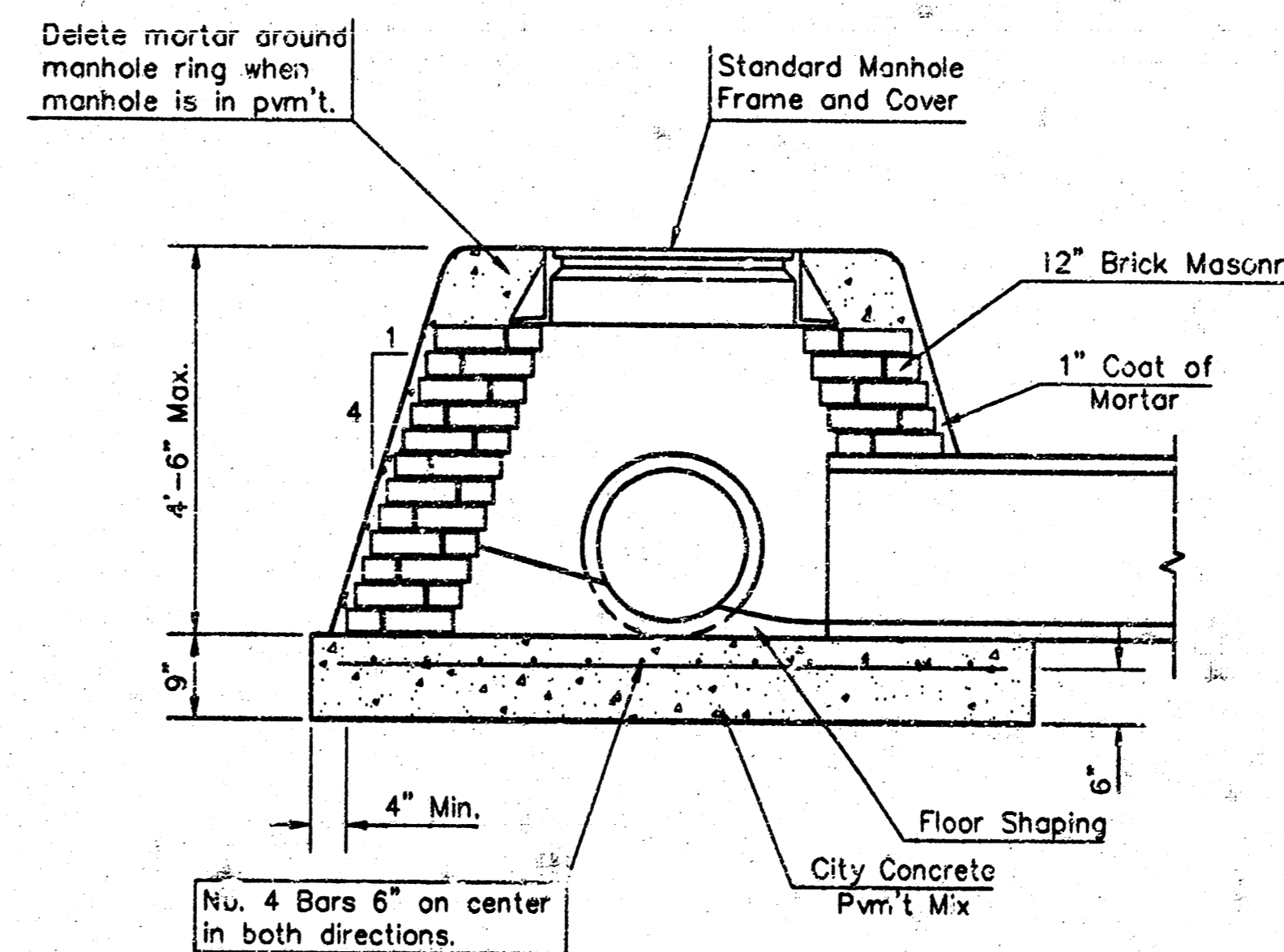


SECTION A-A

FLAT CONCRETE SLAB DETAILS



SPECIAL SHALLOW TYPE "A" MANHOLE



SPECIAL SHALLOW TYPE "B" MANHOLE

GENERAL NOTES

- Mortar used in masonry construction shall contain 8 sacks of cement per cubic yard. Concrete used in manhole bases shall conform to the requirements of concrete for concrete pavement construction as specified in the city standard paving specifications using city concrete cement mix without air entraining admixture. Mortar shall be placed around the manhole ring as shown on the drawings when manholes are constructed in unpaved areas. Type "A" shallow manholes can be used on sewers when the manhole is not located within public street pavement. Manholes constructed where pipe sizes are smaller than 24" shall have an inside diameter of 4". Manholes constructed where pipe sizes are 24" or larger shall have an inside diameter of 5". Completed manhole shall be without leaks and water tight.
- Reinforcing steel shall be installed in the manhole bases and shall consist of no. 4 bars placed on 6" centers in both directions. The manhole base reinforcement shall be placed 6" above the bottom of the manhole base. All costs for furnishing and installing reinforcing steel shall be included in the unit price bid for the manhole.
- The floors of all manholes shall be shaped with flow channels such that the manholes will be self cleaning and free of areas where solids could be deposited as sewage flows through the manhole from all inlet pipes to the outlet pipe. Flow channels shall be formed to match the bottom halves of the inflowing pipes and the outflowing pipe as shown by the drawings. Manhole floors shall have slopes of 3 inches per foot in the areas outside of the flow channels sloped toward the flow channels. Pipes laid through manholes shall have the top half removed to neat lines for the full inside diameter of the manhole. Manhole floors shall then be shaped around the bottom half of the pipe which forms the flow channel.
- Pipes installed within the excavation made for the manhole shall be cradled with concrete to the limits of the manhole excavation. When clay pipe is used, the cradle shall extend to the first joint outside the manhole. The cradle shall be terminated at the clay pipe joint in a manner which will maintain the flexibility of the joint. Cost of cradle within manhole excavation or to clay pipe joints adjacent to manhole shall be included in the unit price bid for the manhole.
- Manhole cover castings and manhole frame castings shall conform to the requirements as indicated in the standard specifications and as shown in the standard detail drawings.
- The crowns of inflowing pipes shall never be set lower than the crown of the outflowing pipe.
- Standard shallow manholes type "A" and "B" shall be paid for at the unit price bid per each for the type and diameter indicated. Standard special shallow manholes type "A" and "B" shall be paid for at the unit price bid per each for the type indicated. All standard shallow manhole diameters will be 4' unless indicated otherwise.
- All brick used in manhole construction shall meet Grade SW of ASTM C652 or C62-87.

CITY OF WICHITA, KANSAS
Std. Manhole Detail
 TYPE "A" AND TYPE "B"
BAUGHMAN COMPANY P.A.
 ENGINEERING, SURVEYING, & PLANNING
 315-282-7271 • 315 ELM • WICHITA, KANSAS 67211
 PROJECT NUMBER
488-8388
 SHEET
8
 OF
11

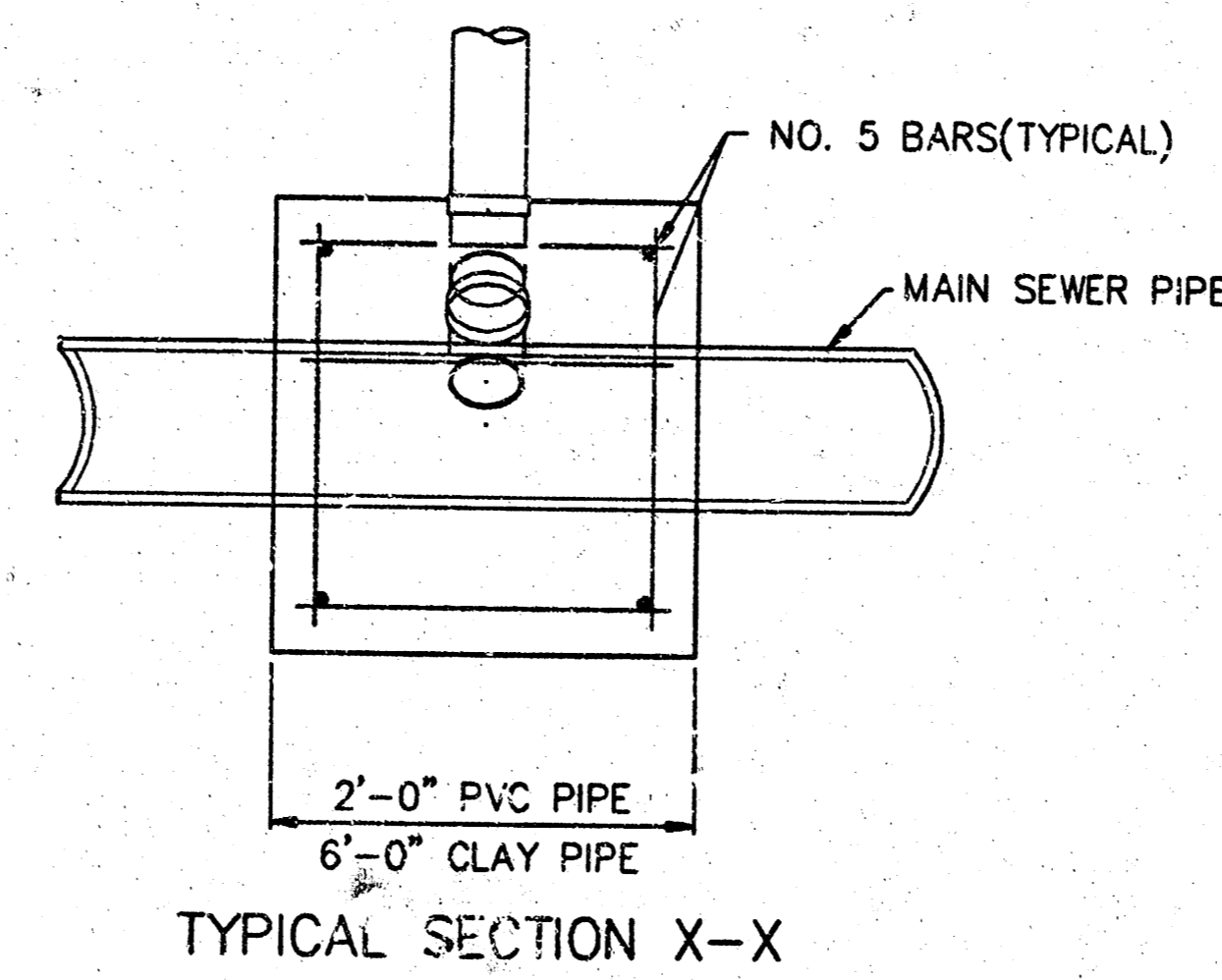
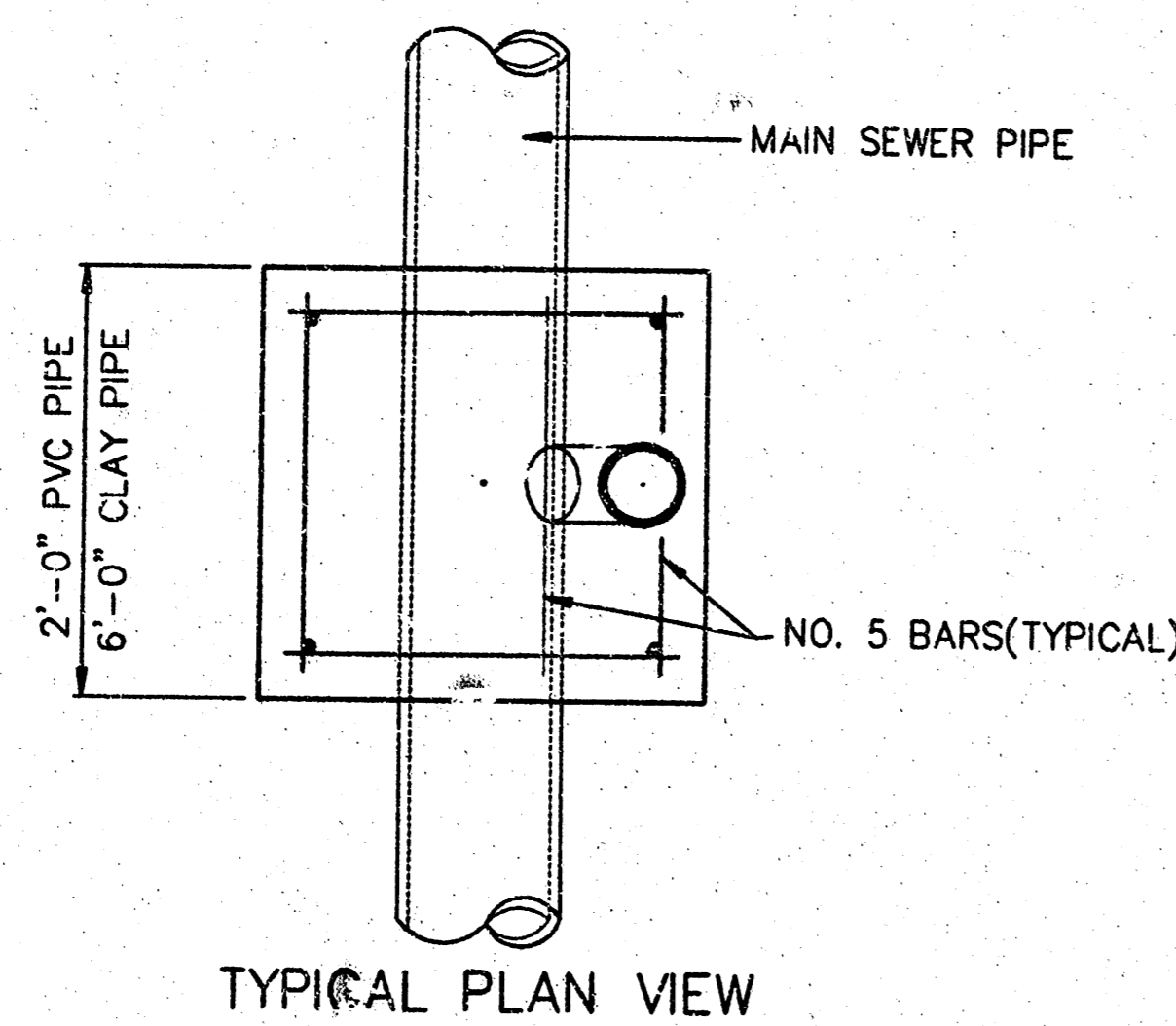
VERTICAL RISER DETAILS

ADOPTED AS STANDARD DESIGN

BY

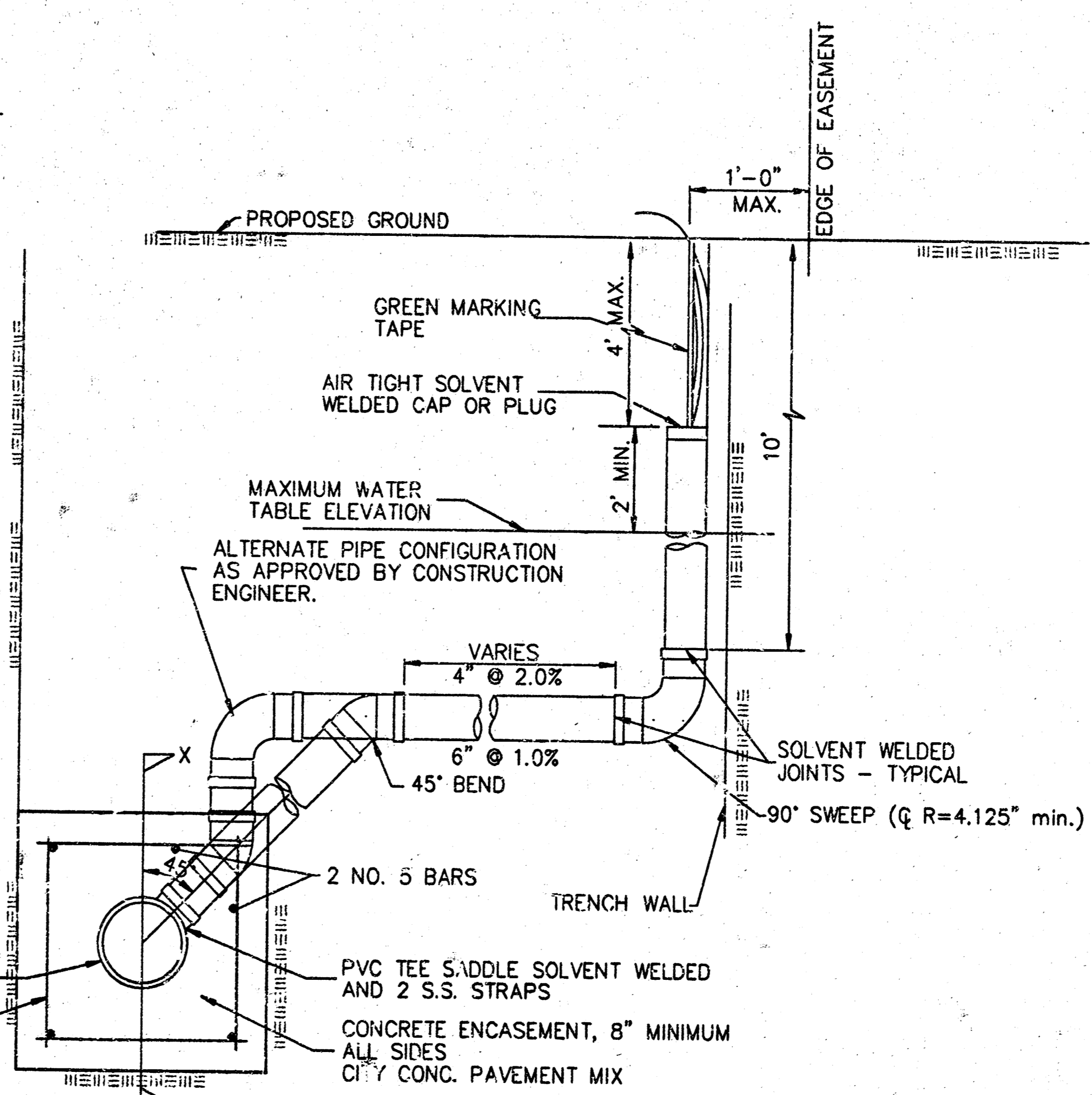
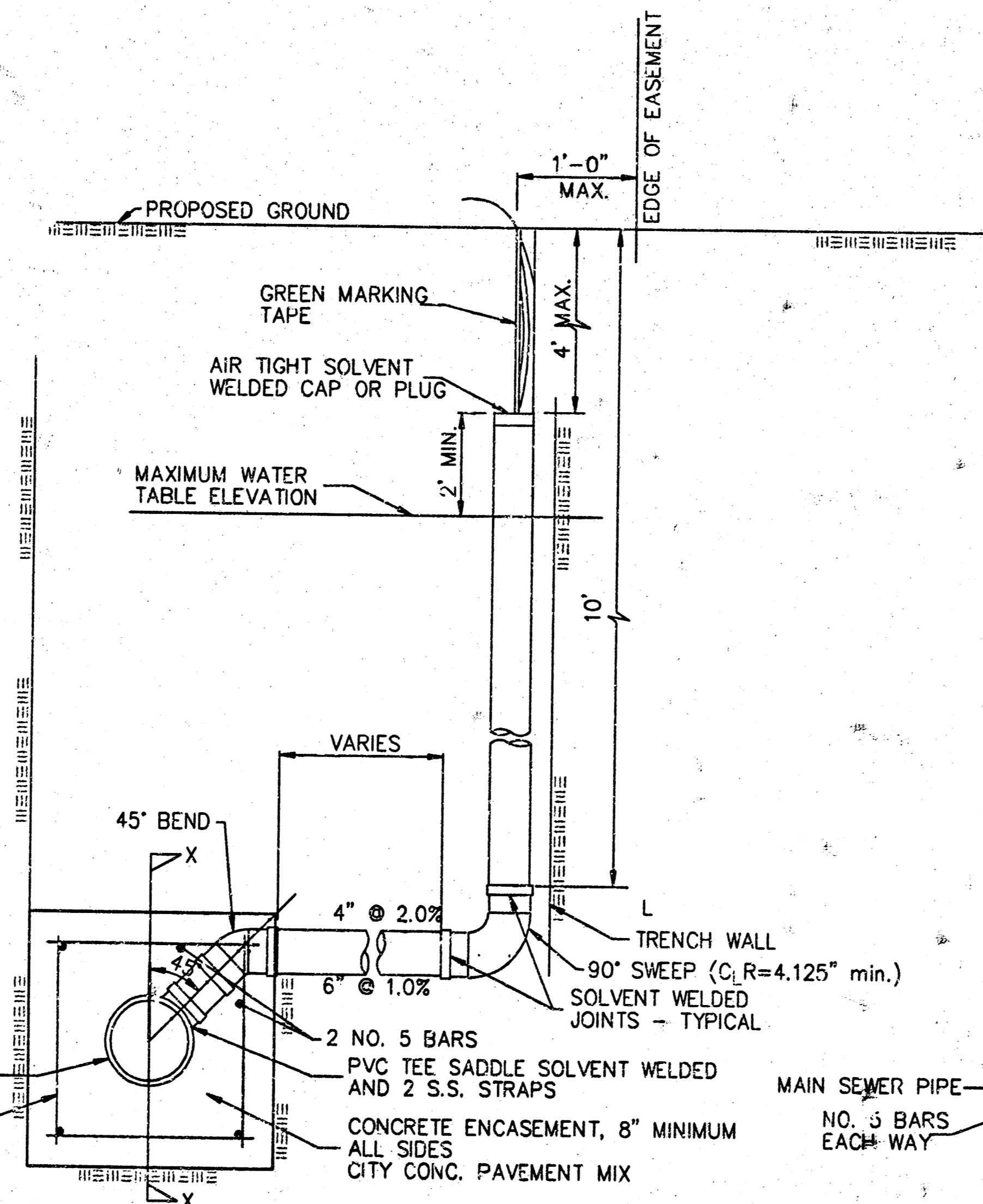
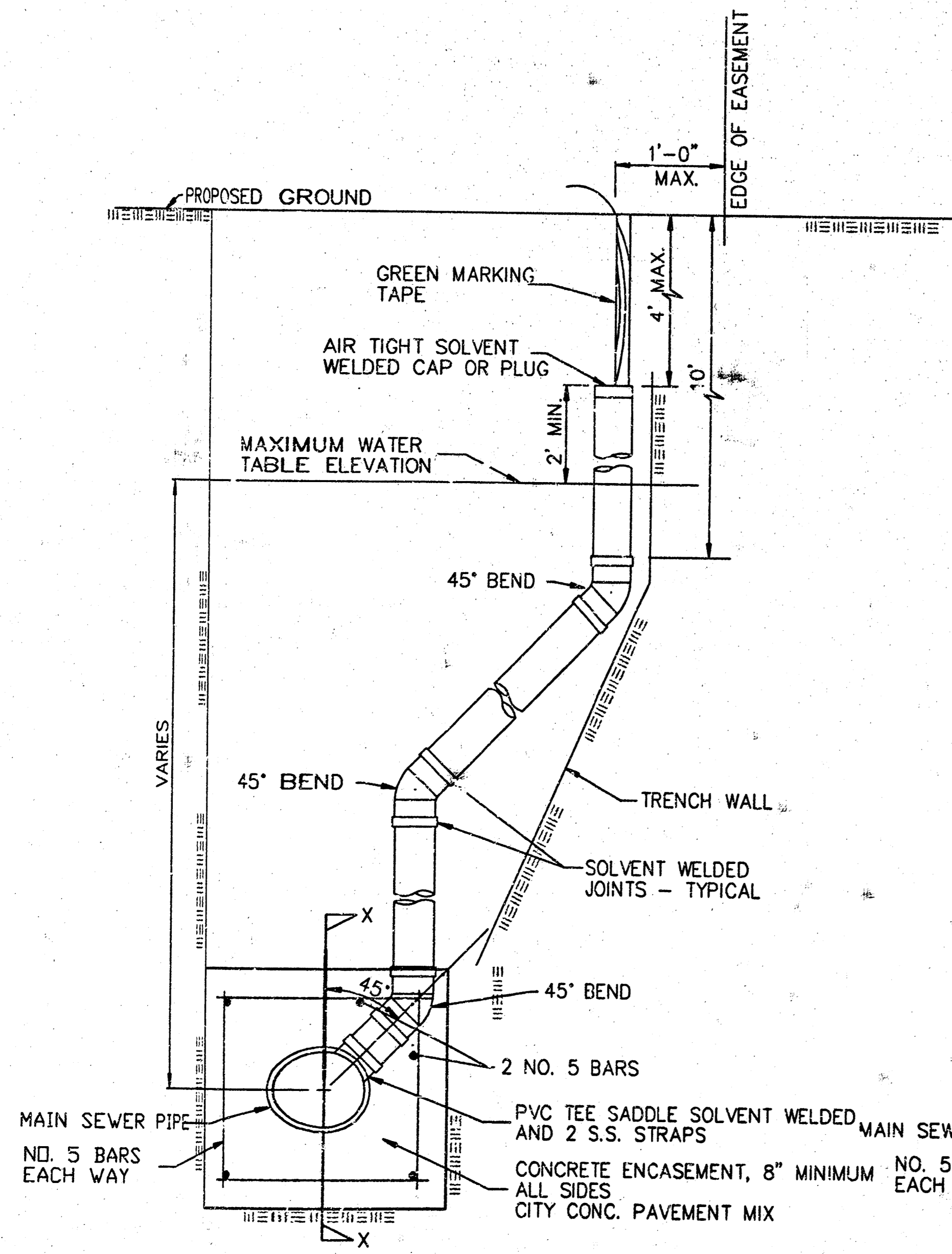
CITY OF WICHITA, KANSAS

OCTOBER 1992



GENERAL NOTES

1. RISERS. Risers shall be installed to serve all lots or tracts where the sanitary sewer main is below the water table. Risers shall also be installed to serve all lots and tracts where the sanitary sewer main depth is greater than 12 feet below the proposed ground elevation. Installation of risers because of field conditions shall be as approved by the Construction Engineer. The location of the risers to serve developed property shall be approved by the property owner and the Construction Engineer.
2. PIPE STUBS. Pipe stubs shall be installed in manholes where locations of manholes will provide satisfactory service connection as determined by the Construction Engineer. The vertical distance between the flowline of the sanitary sewer main and the flowline of the sanitary sewer main out of the manhole shall not exceed 2 feet. Risers shall be utilized at manhole pipe stubs as indicated in Note 1. Manhole pipe stubs shall be set such that the top of the stub is not lower than the top of the sanitary sewer main.
3. SIZING. Pipe stubs and risers shall be sized according to the plans and riser table where risers are indicated by the plans. Where risers or pipe stubs are required because of field conditions, the risers and stubs shall be six-inch diameter for commercial or industrial properties and 4" or 6" diameter for residential properties, based on lot size and sanitary sewer main depth. Sizing of risers and stubs shall be approved by the Construction Engineer prior to installation.
4. RISER OR STUB MATERIAL. Risers and stubs shall be constructed of Schedule 40 PVC pipe, meeting the requirements of the latest revision of A.S.T.M. All pipe joints shall be solvent welded.
5. REINFORCED CONCRETE ENCASUREMENT. Riser connections to clay pipe sanitary sewers shall be reinforced concrete encased both ways from the riser centerline. The reinforced concrete encasement shall extend three feet from the riser centerline or stop at the first sanitary sewer pipe joint within three feet of the riser centerline. Riser connections to PVC Sanitary Sewer mains shall be reinforced concrete encased one foot each way from the riser centerline. The concrete encasement shall be reinforced using reinforcing steel as shown in the appropriate drawing. The concrete shall conform to the City Standard Specifications for concrete pavement.
6. BEDDING. Bedding around the sanitary sewer riser shall be compacted Pipe Bedding Type 1 or 2. The bedding shall be placed and compacted from the depth of the sanitary sewer main to the top of the sanitary sewer riser pipe. Compacted Pipe Bedding Type 1 or 2 shall be required for all risers whether constructed in vertical wall or sloped wall trenches. Bedding material and construction practices shall be approved by the Construction Engineer prior to installation.
7. SUPPORT OF RISERS. Sanitary sewer riser pipe shall be supported during trench backfill. The riser pipe shall be held in a vertical position at all times until trench backfill and compaction has been completed. Contractor's methods for supporting and backfilling the riser pipe shall be approved by the Construction Engineer.
8. PLUGGING. The ends of the riser pipes and manhole stubs shall be plugged using an airtight solvent welded cap or plug. Cap or plug fittings shall be approved by the Construction Engineer prior to installation. Caps or plugs which do not provide an airtight seal will not be accepted.
9. TOP OF THE RISER PIPE. The top elevation of the sanitary sewer riser pipe shall be built per plan elevations, unless otherwise directed by the Construction Engineer. Where riser elevations are not shown on the plans, the top of the risers shall be set at an elevation four feet below the proposed ground surface. If ground water is encountered, the top of the riser pipe shall be set at an elevation two feet (min.) above the maximum water table elevation, regardless of the riser elevation shown on the plans.
10. MARKING. Locations of the ends of the sanitary sewer riser pipe shall be marked by fastening green colored plastic tape to the riser pipe. The tape shall be supported by a wooden stake 2" x 4" extending from the top of the riser pipe to the proposed ground surface. The green tape shall be visible and extend one foot above the proposed ground surface. The green tape shall be 4 mil Polyethylene film with a minimum width of three inches, specifically manufactured for the purpose of identification of underground sewers.
11. LOCATION MEASURES. The project inspector shall record and document the location of all risers constructed as measured from the nearest manhole, indicating the direction from the manhole, the direction and distance from the main, riser size, and elevation of the top of the riser.
12. RISER LOCATION. The riser shall be located per plan if shown. If not shown on the plan, the riser shall be located at the center of the lot, within one foot of the property side of the easement for the lot being served. Riser locations shall be approved by the Construction Engineer prior to installation.
13. PAYMENT. "Sanitary sewer risers" shall be paid for at the contract unit price per each, which price shall be full compensation for all labor, material, and incidentals necessary to complete the work including all pipe, fittings, reinforced concrete encasement, and all other items as required and listed for "Sanitary Sewer Risers".



NOTE: RISER PIPE REQUIREMENTS AT MANHOLE STUBS SHALL BE SIMILAR TO THOSE SHOWN ABOVE.

City of Wichita Standard
Riser Details

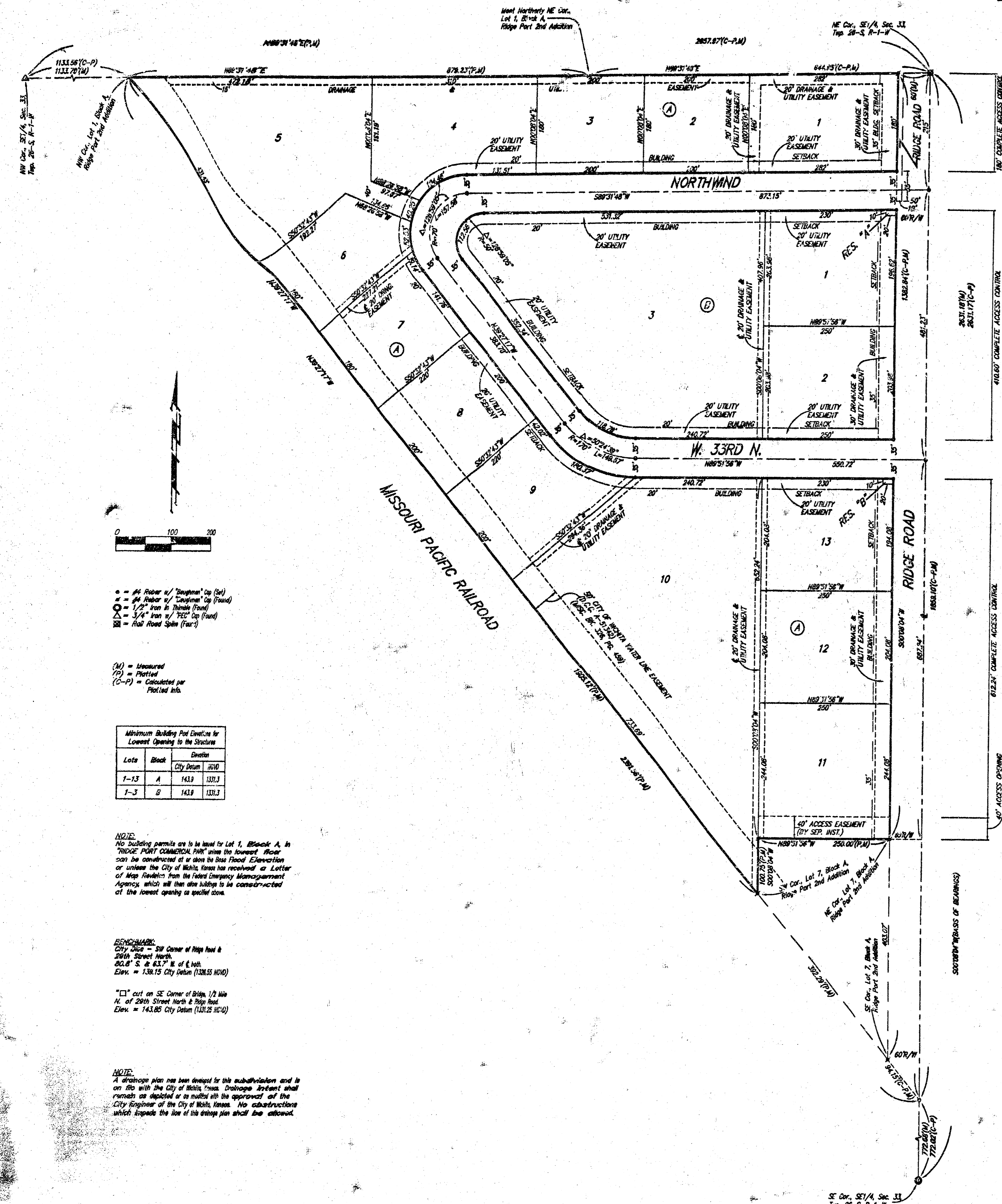
BAUGHMAN COMPANY P.A.
ENGINEERING, SURVEYING, & PLANNING
318-282-7271 • 315 ELLIS • WICHITA, KANSAS 67211

PROJECT NUMBER
428-8-955

SHEET
10
OF
11

| | | | |
|-----------------|----------------|---------------|------|
| DESIGN Staff | DRAWN Staff | APPROVED | DATE |
| | | SCALE NONE | |

RIDGE PORT COMMERCIAL PARK WICHITA, SEDGWICK COUNTY, KANSAS



State of Kansas) SS We, Baughman Company, P.A., Surveyors in
Sedgwick County) and state do hereby certify that we have surveyed
and plotted RIDGE PORT COMMERCIAL PARK, Wichita, Sedgwick County,
Kansas, and that the accompanying plot is a true and correct exhibit
of the property surveyed, described as and being a replat of Lots 1,
2, 3, 4, 5, and 6, inclusive, Block A, Ridge Port 2nd Addition, Wichita,
Sedgwick County, Kansas, TOGETHER with that part of the SE 1/4 of
Sec. 33, Twp. 26-S, R-1-W of the 6th P.M., Sedgwick County, Kansas,
lying northerly and northeasterly of Ridge Port 2nd Addition, Wichita,
Sedgwick County, Kansas.

Existing public easements and dedications
being vacated by virtue of K.S.A. 12-512(o).
Baughman Company, P.A.

Michael G. Conroy
Michael G. Conroy, Surveyor

This plot of "RIDGE PORT COMMERCIAL PARK",
Wichita, Sedgwick County, Kansas has been submitted to and approved
by the Wichita-Sedgwick County Metropolitan Area Planning Commission,
Wichita, Kansas.
Dated this _____ day of _____, 2002.
Wichita-Sedgwick County Metropolitan Area Planning Commission

_____, Chair
J. D. Michaels
_____, Secretary
Karin S. Krout

This plot approved and all dedications
shown hereon accepted by the City Council of the City of Wichita,
Kansas, this _____ day of _____, 2002.

At the direction of the City Council

_____, City Manager
Chris Charches
_____, City Clerk
Pat Burnett

Know all men by these presents that we,
the undersigned, have caused the land in the surveyors certificate to be
plotted into Lots, Blocks, Streets, and Reserves to be known as "RIDGE
PORT COMMERCIAL PARK", Wichita, Sedgwick County, Kansas. The utility
easements are hereby granted as indicated for the construction and
maintenance of all public utilities. The drainage easement is hereby
granted as indicated for drainage purposes. The drainage and utility
easements are hereby granted as indicated for drainage purposes and
for the construction and maintenance of all public utilities. The streets
are hereby dedicated to and for the use of the public. Reserves "A"
and "B" are hereby reserved for signs, open space, streets, landscaping,
drainage purposes, and utilities. Reserves "A" and "B" shall be owned
and maintained by the lot owners association for the addition. Access
controls shall be as depicted on the face of the plot and are hereby
granted to the city of Wichita, Kansas. The permitted opening locations
shall be as determined by the City Engineer of the City of Wichita,
Kansas. The Minimum Building Pad Elevation for the lowest opening to
the structures on all Lots shall be 143.9 City Datum, (1331.3 NGVD).

RRGNL, L.L.C.
Joy W. Russell
Joy W. Russell, Member

Reviewed in accordance with K.S.A. 59-2005
on this _____ day of _____, 2002.

_____,
Tricia L. Robello, L.S. #1246
Deputy County Surveyor
Sedgwick County, Kansas

State of Kansas) SS The foregoing instrument acknowledged before
me, this _____ day of _____, 2002, by Joy W. Russell, Member of
RRGNL, L.L.C., on behalf of the limited liability company.

Judith M. Terhune
JUDITH M. TERHUNE, Notary Public
My App'l. Exp. 11-7-2006

Entered on transfer record this _____ day
of _____, 2002.

_____, County Clerk
Don Brace

We the undersigned holders of a mortgage on the
above described property, do hereby consent to this plot of "RIDGE PORT
COMMERCIAL PARK", Wichita, Sedgwick County, Kansas.

Conway Bank (A/K/a The First National Bank)
Chris A. Anderson
CHRIS A. ANDERSON

State of Kansas) SS This is to certify that this plot has been
Sedgwick County) filed for record in the office of the Register of Deeds, this _____ day
of _____, 2002 at _____ o'clock _____ M., and is duly recorded.

State of Kansas) SS The foregoing instrument acknowledged be-
Sedgwick County) fore me, this _____ day of _____, 2002, by _____
EYES, _____ of Conway Bank (A/K/a The First National Bank, on
behalf of the bank.

Judith M. Terhune
JUDITH M. TERHUNE, Notary Public
My App'l. Exp. 11-7-2006

_____, Register of Deeds
Bill Weck
_____, Deputy
Linda Kizeire

BAUGHMAN COMPANY P.A.
ENGINEERING, SURVEYING, & PLANNING
318-288-7271 • 318-288-7272 • WICHITA, KANSAS 67211
P. 15 PLATE 1507 COMM. PAUSE PAUSE 1507 1507 1507 1507 1507 1507 1507 1507 1507 1507

11-08-03-11
11-08-03-11