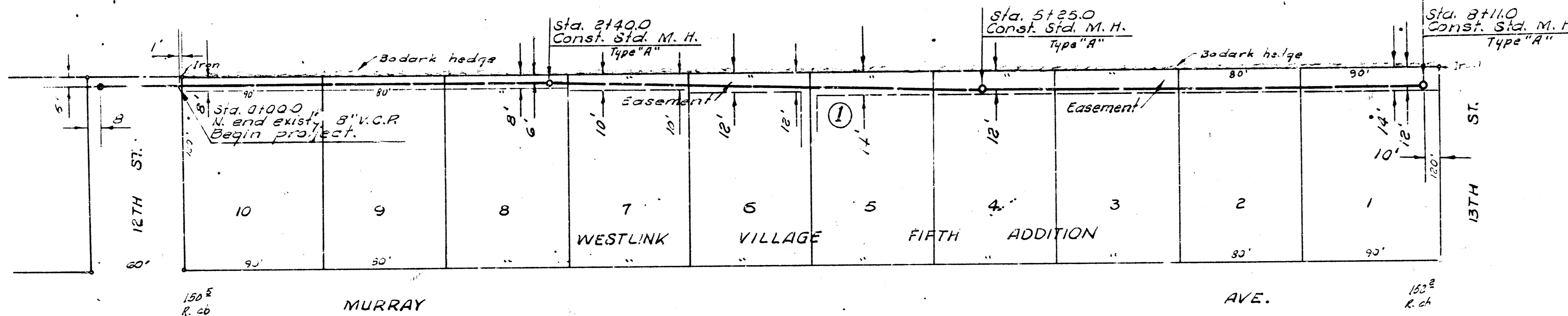
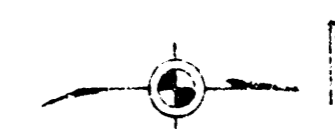


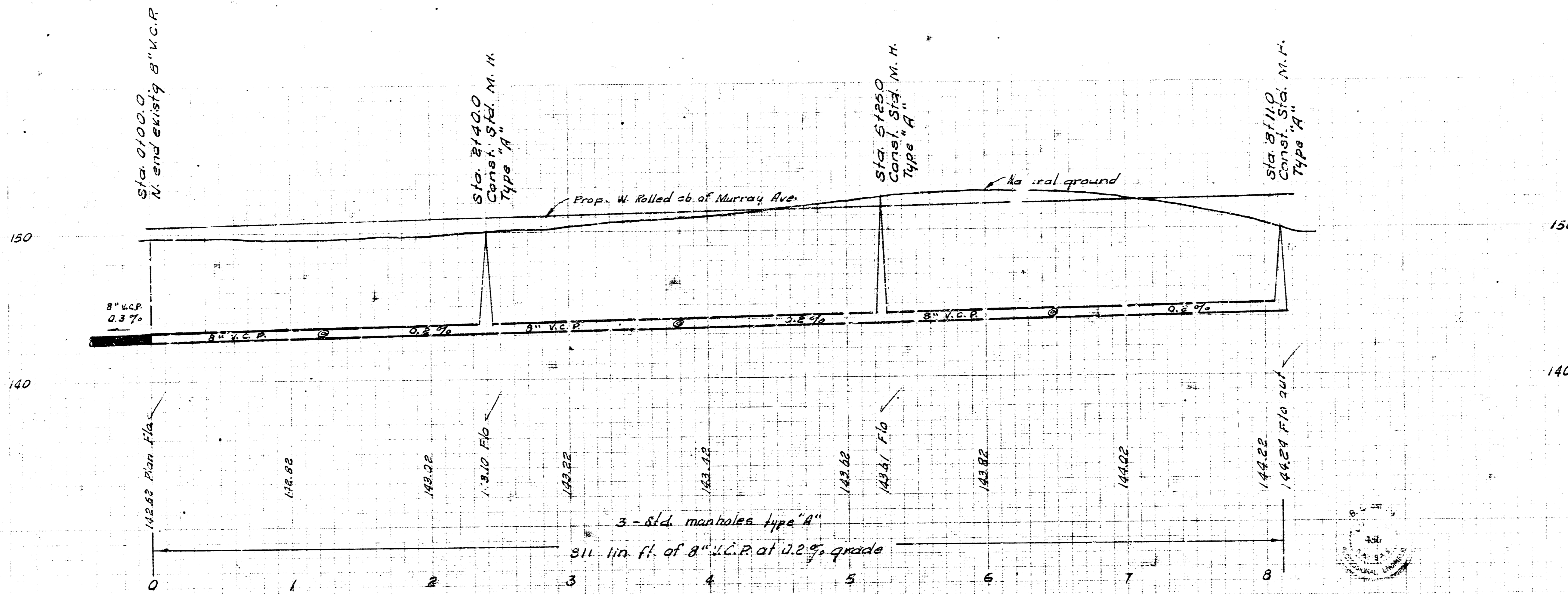
B. M. 154.33 + cut on east end S. Hubbard R. C. B. C. 1/2 mi. west of Tyler Road on 13th St

NOTE:
Cost of trimming hedge to be included in bid price.



Survey by G. Y. ... 34 No. 1117

Plan scale 1" = 40' ...



LAT. 9, WESTLINK SEWER
CITY OF WICHITA, KANSAS
B. E. SMITH CITY ENGINEER
MAR. 1966 PROJECT NO. C24-27