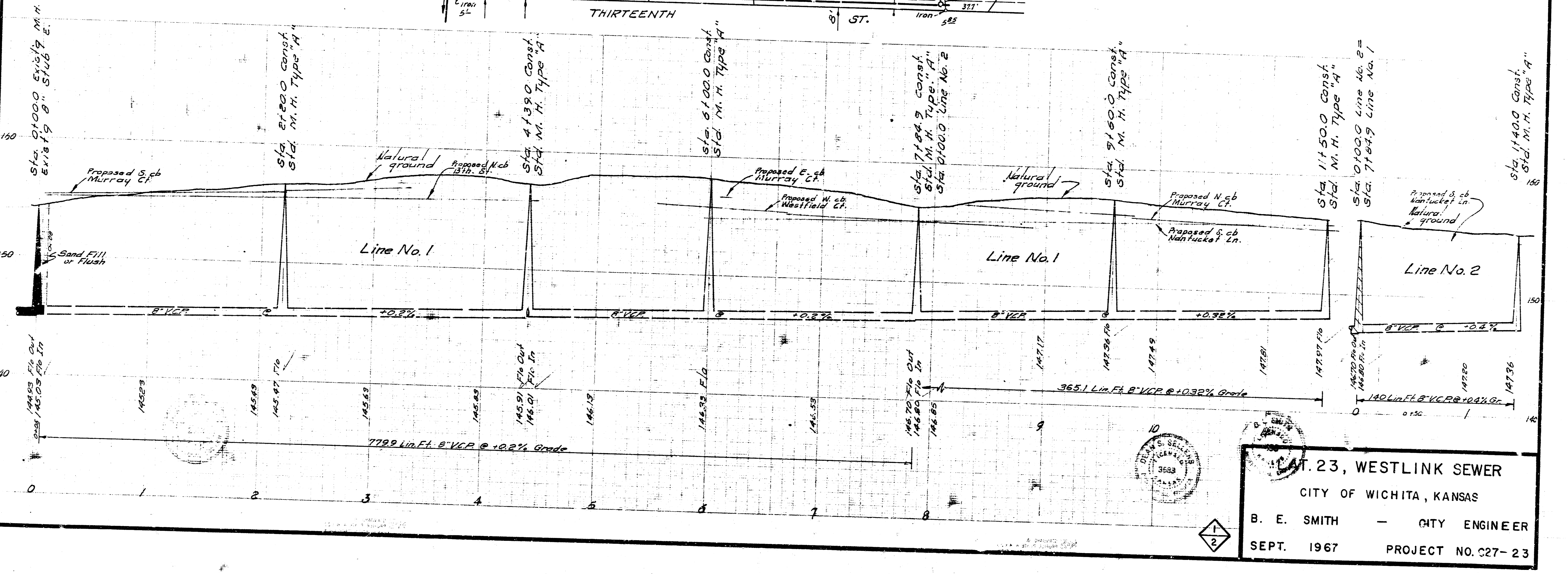


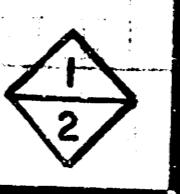
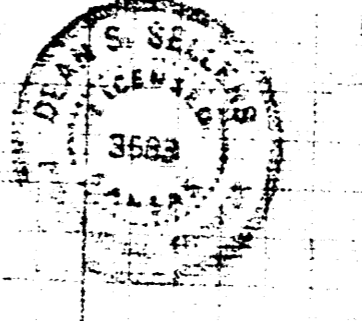
B. M. 154.30 "X" on S. E. Subward to bridge on 13th St. 100 W. of Murray Ave.
 B. M. 156.47 R. R. Spike on N. side P. Pole approx. 110' W. of W. L. Byron Road 3rd S. Side of 13th St.

Survey by U. F. G. BK No. U.F.S. 159
 Checked by

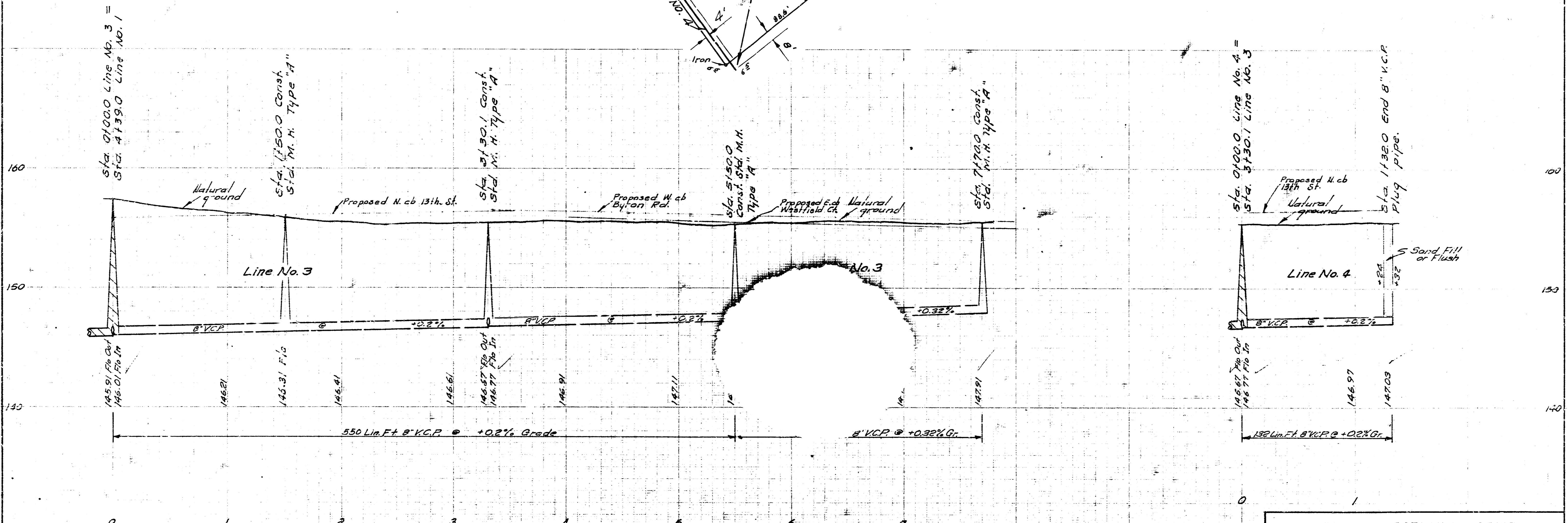
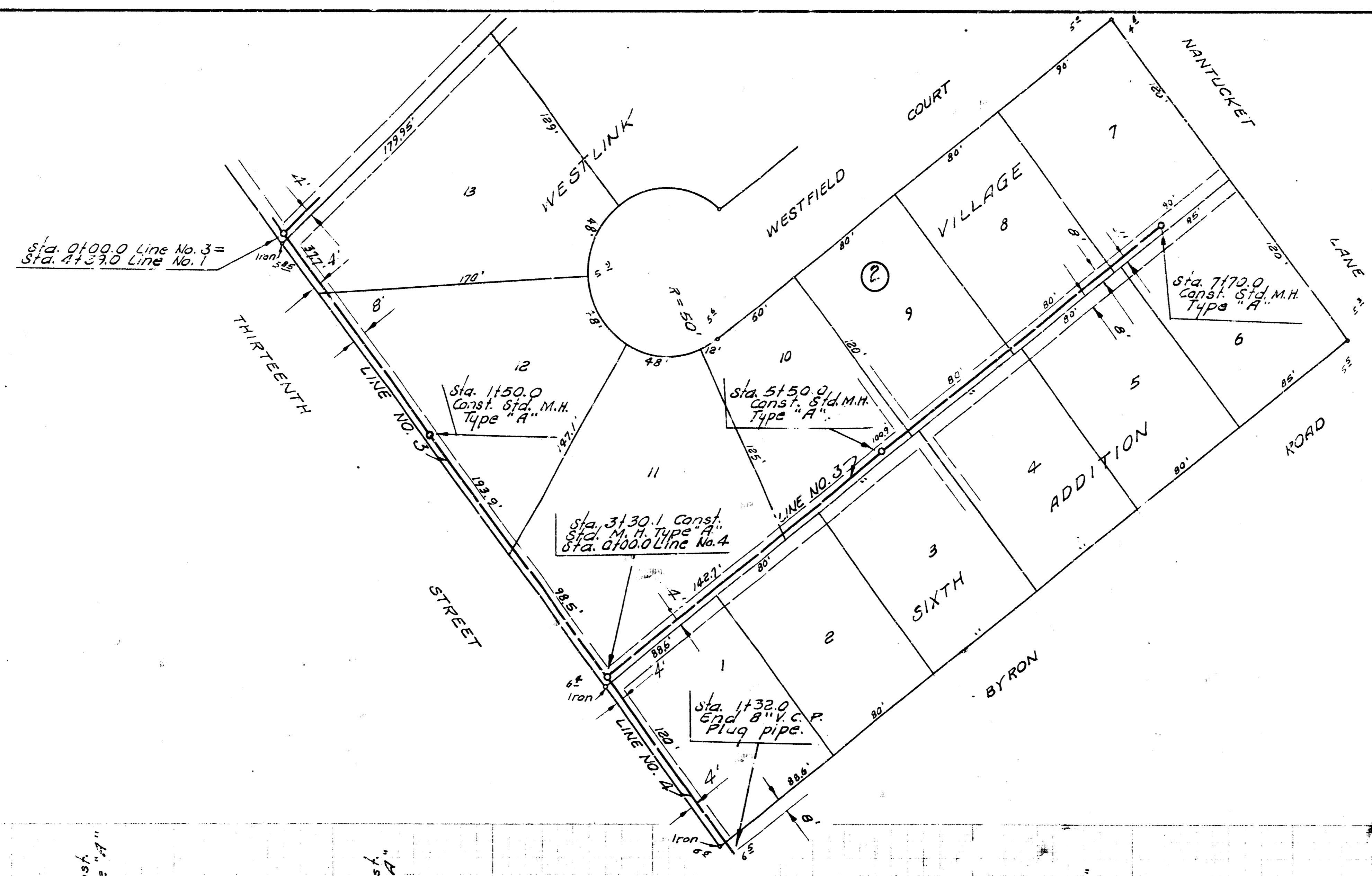
Part 3-22, 11-23
 Part 3-23, 11-23
 Part 3-24, 11-23



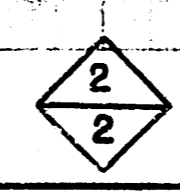
11-23, WESTLINK SEWER
 CITY OF WICHITA, KANSAS
 B. E. SMITH - CITY ENGINEER
 SEPT. 1967 PROJECT NO. C27-23



Plan Scale 1"=20'
Profile Scale 1"=40' Vert.



L.A.T. 23, WESTLINK SEWER
PROJECT NO. C27-23



3 13 3 3