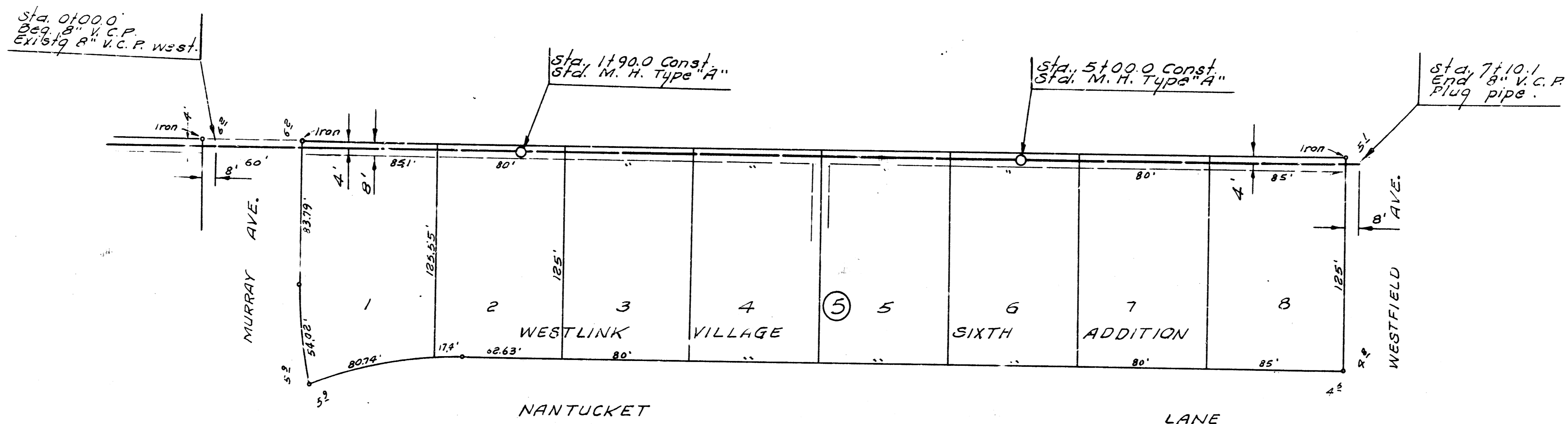
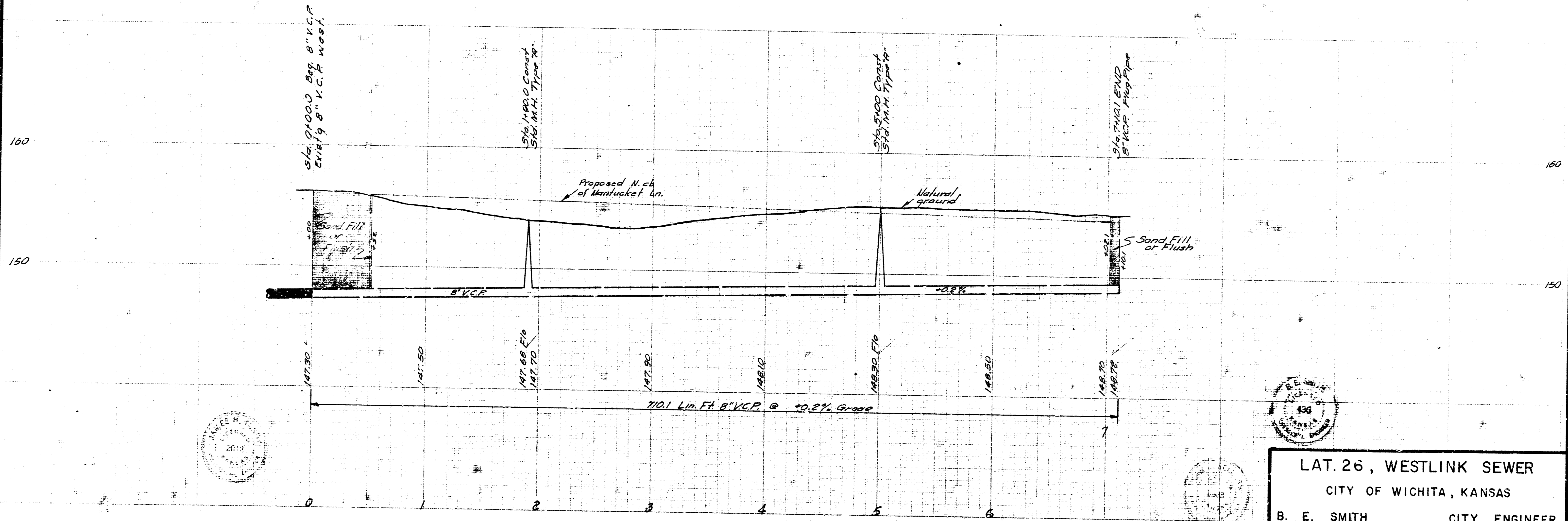


B. M. 134.30 "A" on S.E. Hubbard to bridge
 on 13th St. 100' W. of Murray Ave.
 B. M. 156.47 R. R. Spike on N. Side P. Fols approx. 110'
 N. of W.L. Byron Rd. on S. Side 13th St.

Plan Scale 1" = 40'
 Profile Scale 1" = 4' Vert.



Survey by J.G. Bl. W.G. 183
 Checked by



LAT. 26, WESTLINK SEWER
 CITY OF WICHITA, KANSAS
 B. E. SMITH CITY ENGINEER
 SEPT. 1967 PROJECT NO. C27- 26