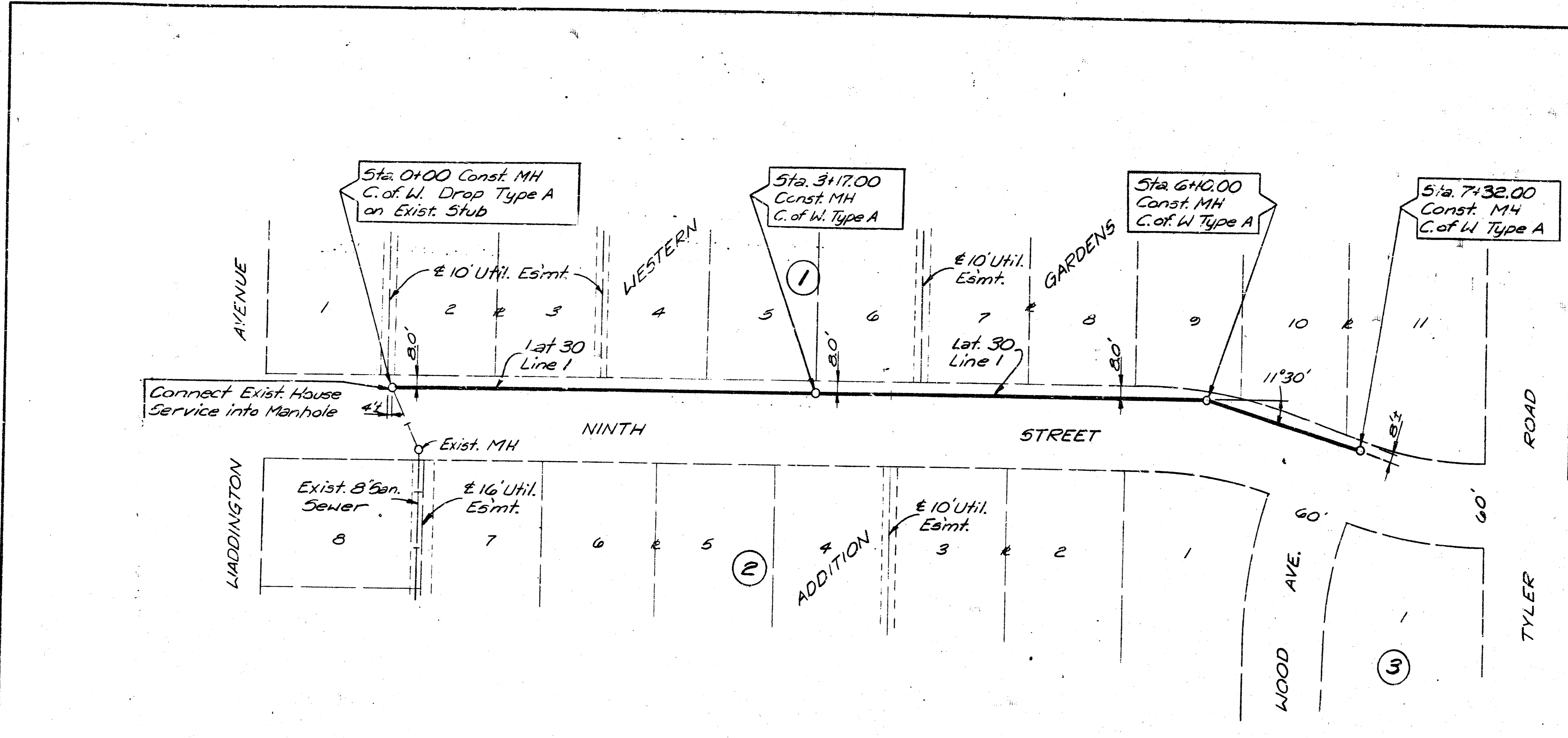


DATE	
BY	
REVISIONS	
NO.	
DATE	
BY	
REVISIONS	
NO.	
DATE	
BY	
REVISIONS	
NO.	

DATE	
BY	
REVISIONS	
NO.	
DATE	
BY	
REVISIONS	
NO.	
DATE	
BY	
REVISIONS	
NO.	



APPROX. QUANT.	UNIT	DESCRIPTION
732	L.F.	8" Vitrified Clay Pipe
732	L.F.	Trench and Backfill 8'-10"
4	Ea.	City of Wichita Type A Manholes

SCALE:  
Plan: 1"=50'  
Profile: Horiz. 1"=50'  
Vert. 1"=5'

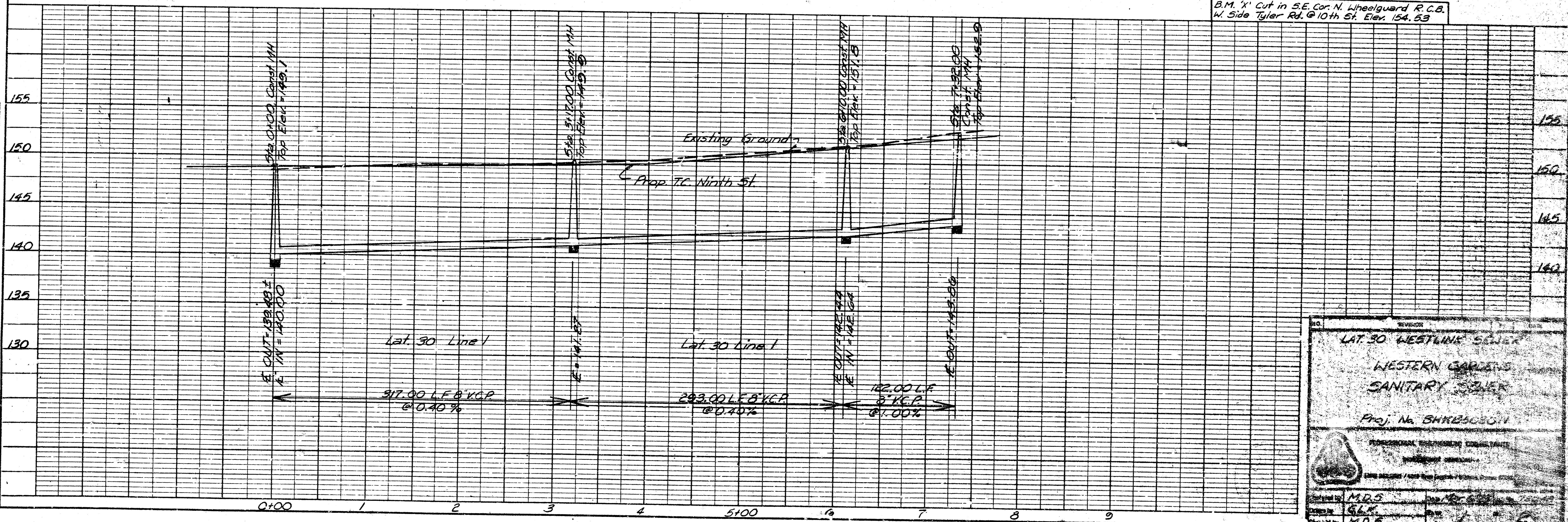
NOTES

- All Manholes to be City of Wichita Standard Type A, and 4 ft. diameter.
- Sewer lines to be inspected by the Dept. of Public Works, Inspection.
- All Manholes and Sewers will be constructed in accordance with City of Wichita Specifications for these items.
- Sand backfill all sewer excavation.

APPROVED AS NOTED  
By CITY ENGINEER OF WICHITA  
Sanitary Sewers: 2-1-73 RLB  
Storm Sewers: \_\_\_\_\_  
Driveway Approaches: \_\_\_\_\_

NOTE TO CONTRACTOR  
This project will be constructed under the supervision of the CITY ENGINEER and conforming to the SPECIFICATIONS of the CITY OF WICHITA. The CONTRACTOR will reimburse the City of Wichita for all cost of Engineering, Surveying, and Inspection.

B.M. 'X' Cut in S.E. Cor. N. Wheelguard R.C.B. W. Side Tyler Rd. @ 10th St. Elev. 154.53



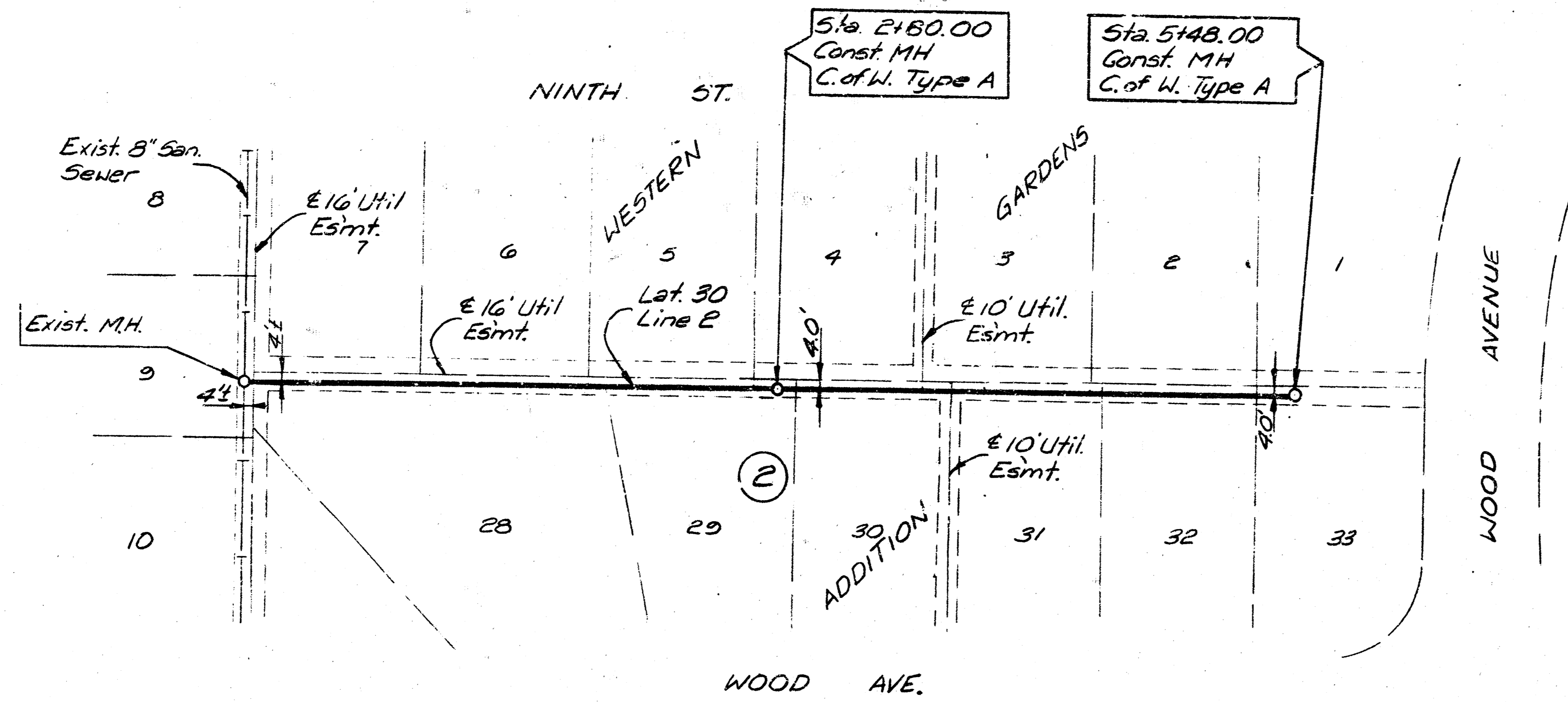
LAT. 30 WESTLINK SEWER  
WESTERN GARDENS  
SANITARY SEWER  
Proj. No. 51182-10-11

PROFESSIONAL ENGINEER EXAMINER

DATE ISSUED / REVISED: \_\_\_\_\_

Checked by: M.D.S.  
Checked by: G.L.K.  
Checked by: M.D.S.

DATE	
BY	
PLANNED	
NOTED	
ALIGNED	
CHECKED	
NO.	
PLAN	
NOTE BOOK	
NO.	



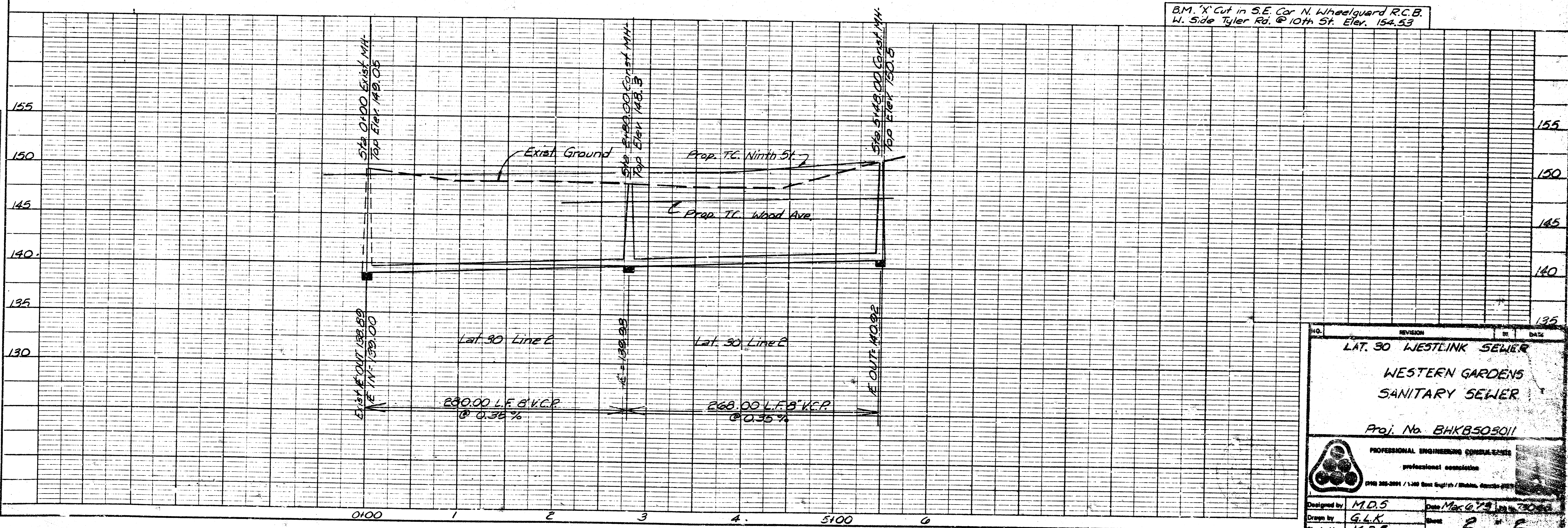
APPROX. QUANT.	UNIT	DESCRIPTION
548	L.F.	8" Vitrified Clay Pipe Trench and Backfill 8-10'
548	L.F.	City of Wichita Type A
2	Ea.	Manholes

SCALE:  
Plan 1"=50'  
Profile  
Horiz. 1"=50'  
Vert. 1"=5'

APPROVED AS NOTED  
By CITY ENGINEER OF WICHITA  
Sanitary Sewer 3-7-13 G.L.K.  
S. J. G. S. S. S.  
Drawn by Approaches

NOTE TO CONTRACTOR  
This project will be constructed under the supervision of the CITY ENGINEER and conforming to the SPECIFICATIONS of the CITY OF WICHITA. The CONTRACTOR will reimburse the City of Wichita for all cost of Engineering, and Inspection.

DATE	
BY	
PLANNED	
NOTED	
GRADE CHECKED	
NO.	
PROFILE	
NOTE BOOK	
NO.	



B.M. 'X' Cut in S.E. Cor. N. Wheelguard R.C.B. W. Side Tyler Rd. @ 10th St. Elev. 154.53

NO.	REVISION	BY	DATE
<b>LAT. 30 WESTLINK SEWER</b>			
<b>WESTERN GARDENS</b>			
<b>SANITARY SEWER</b>			
Proj. No. BHKBS03011			
PROFESSIONAL ENGINEERING CONSULTANTS Professional Corporation 1908 West 20th St. / 1300 East English / Wichita, Kansas 67202 (316) 262-2004 / (316) 262-2005			
Designed by	M.D.S.	Date	Mar 27, 2013
Drawn by	G.L.K.	Sheet	2 of 6
Checked by	M.D.S.		