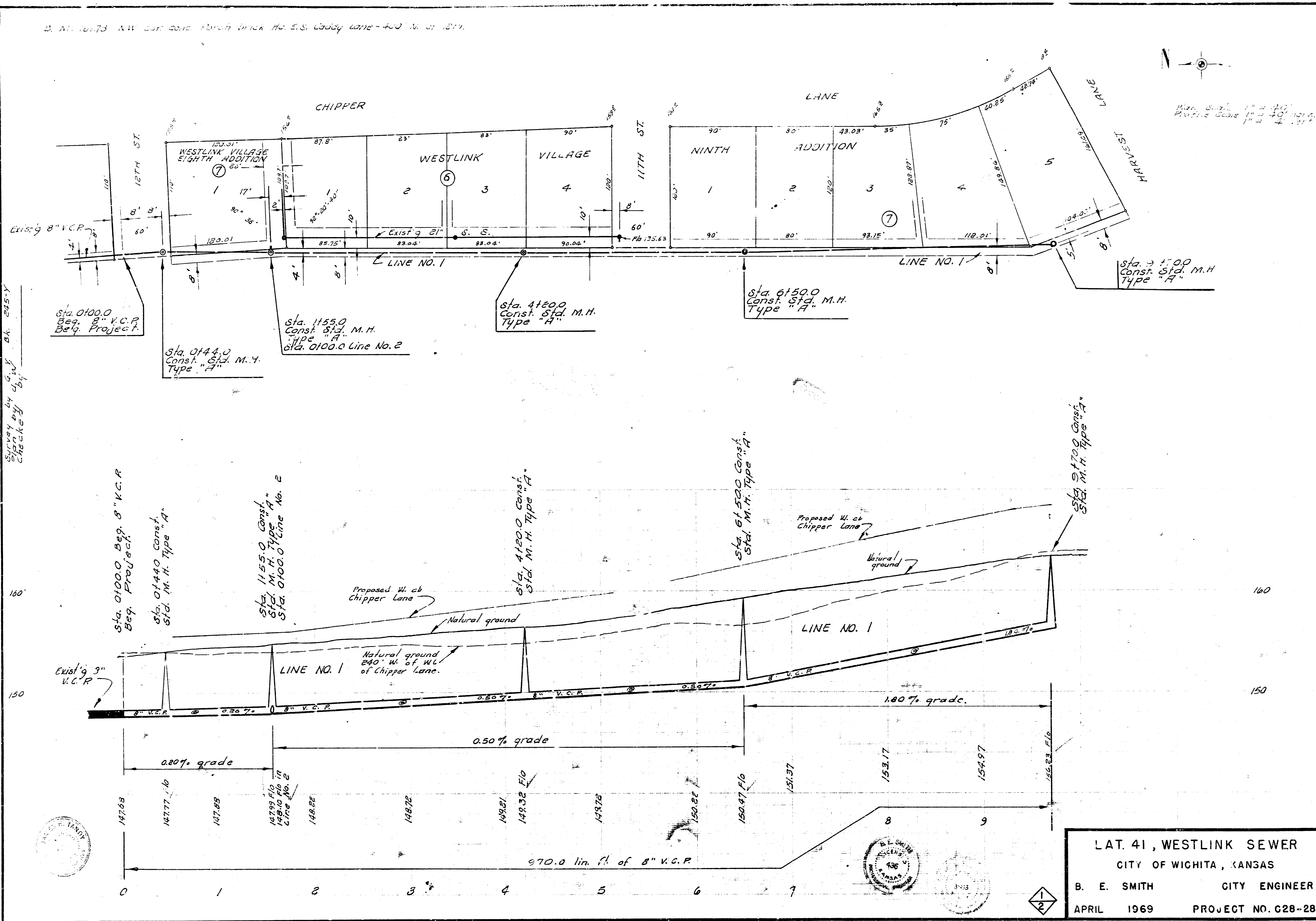
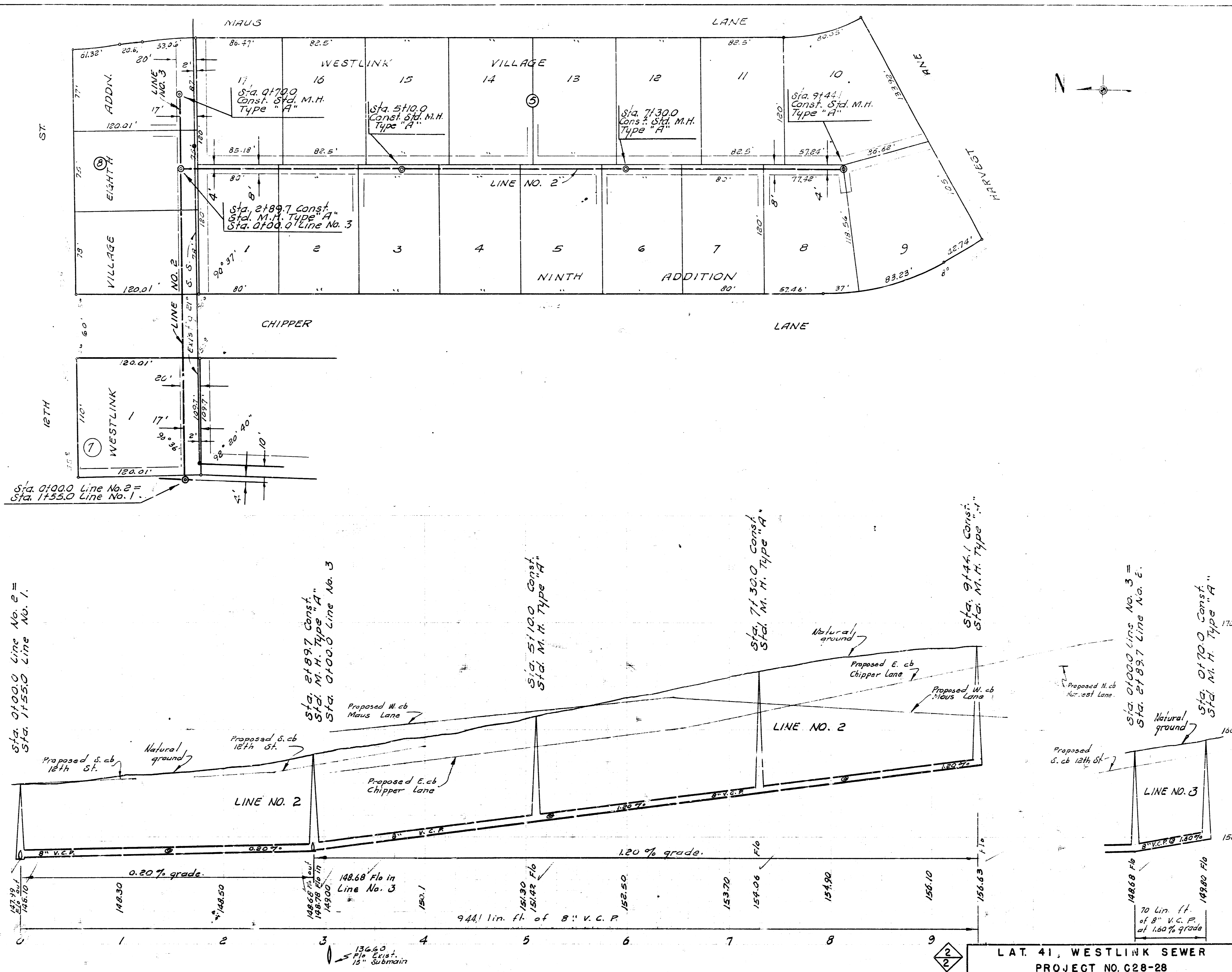


D. W. 10773 NW Corn Lane, Birch Brick No. 5, S. Cuddy Lane - 400 N. W. 1277.



LAT. 41, WESTLINK SEWER
 CITY OF WICHITA, KANSAS
 B. E. SMITH CITY ENGINEER
 APRIL 1969 PROJECT NO. C28-28



LAT. 41, WESTLINK SEWER
PROJECT NO. C28-28