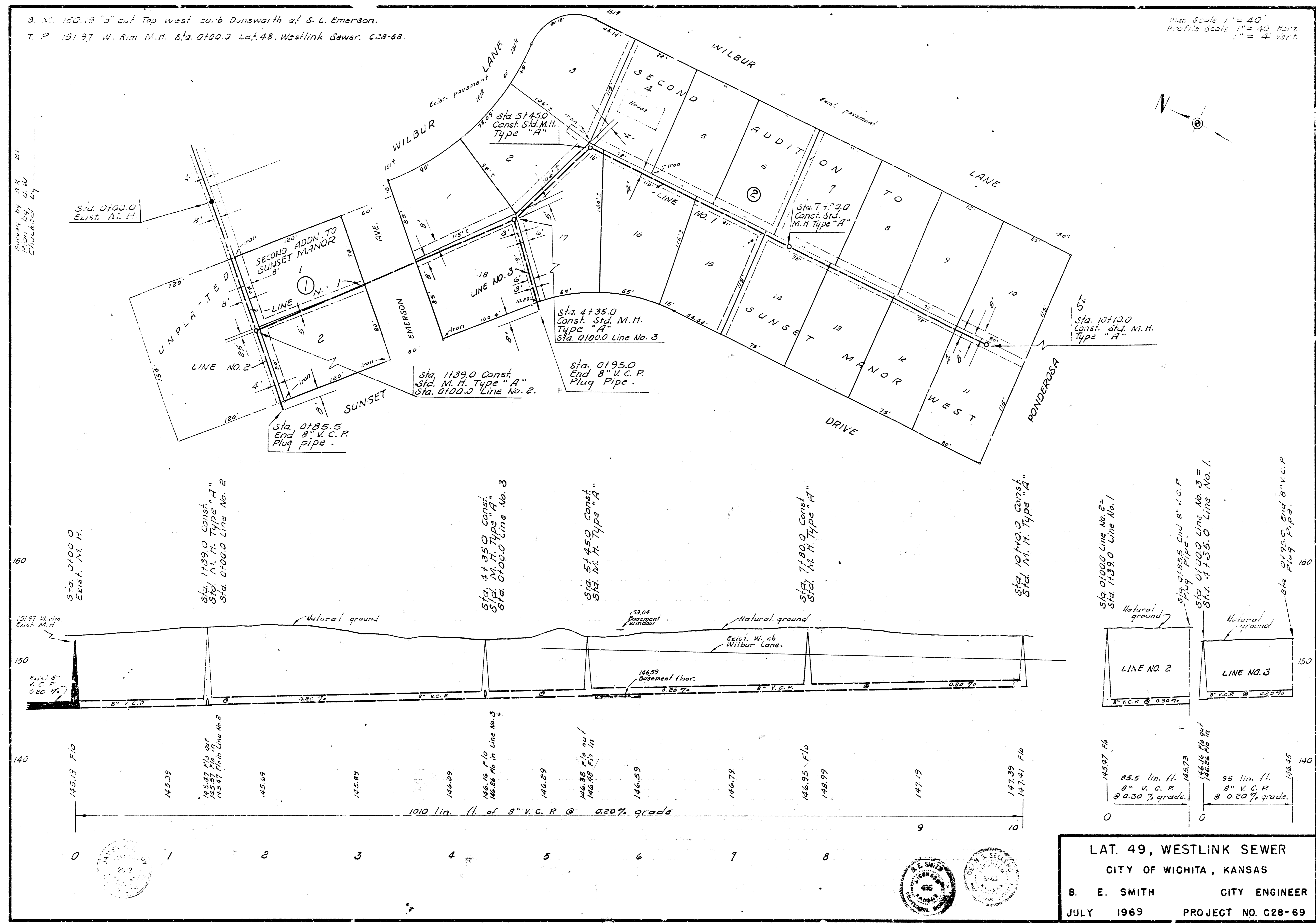


3. N. 150.19 "d" cut Top west curb Dunsworth at G. L. Emerson.
 T. P. 151.97 W. Rim M.H. Sta. 0100.0 Lat. 48, Westlink Sewer. C28-69.

Plan Scale 1" = 40'
 Profile Scale 1" = 4' Vert.



Sta. 0100.0
 Exist. M.H.

Sta. 1139.0 Const.
 Sta. M.H. Type "A"
 Sta. 0100.0 Line No. 2

Sta. 4135.0 Const.
 Sta. M.H. Type "A"
 Sta. 0100.0 Line No. 3

Sta. 5145.0 Const.
 Sta. M.H. Type "A"

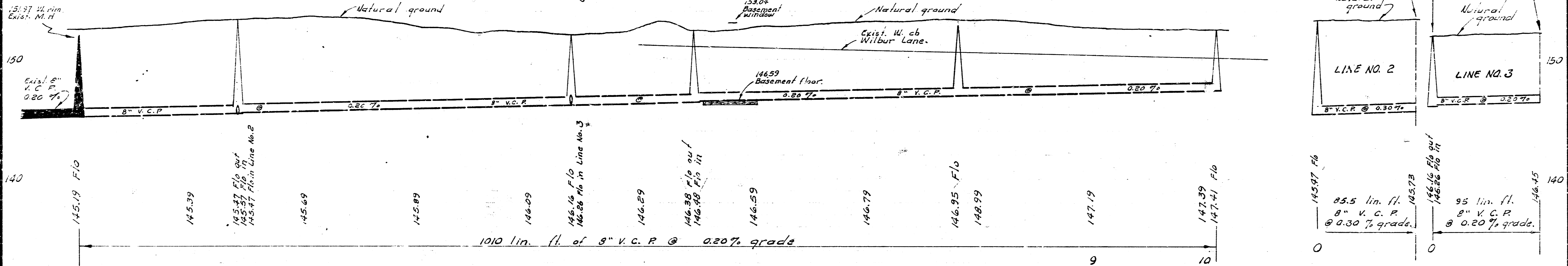
Sta. 7180.0 Const.
 Sta. M.H. Type "A"

Sta. 10140.0 Const.
 Sta. M.H. Type "A"

Sta. 0100.0 Line No. 2
 Sta. 1139.0 Line No. 1

Sta. 0135.5 End 8" V.C.P.
 Sta. 0100.0 Line No. 3
 Sta. 4135.0 Line No. 1

Sta. 2135.0 End 8" V.C.P.
 Sta. 2135.0 End 8" V.C.P.



LAT. 49, WESTLINK SEWER
 CITY OF WICHITA, KANSAS
 B. E. SMITH CITY ENGINEER
 JULY 1969 PROJECT NO. C28-69

