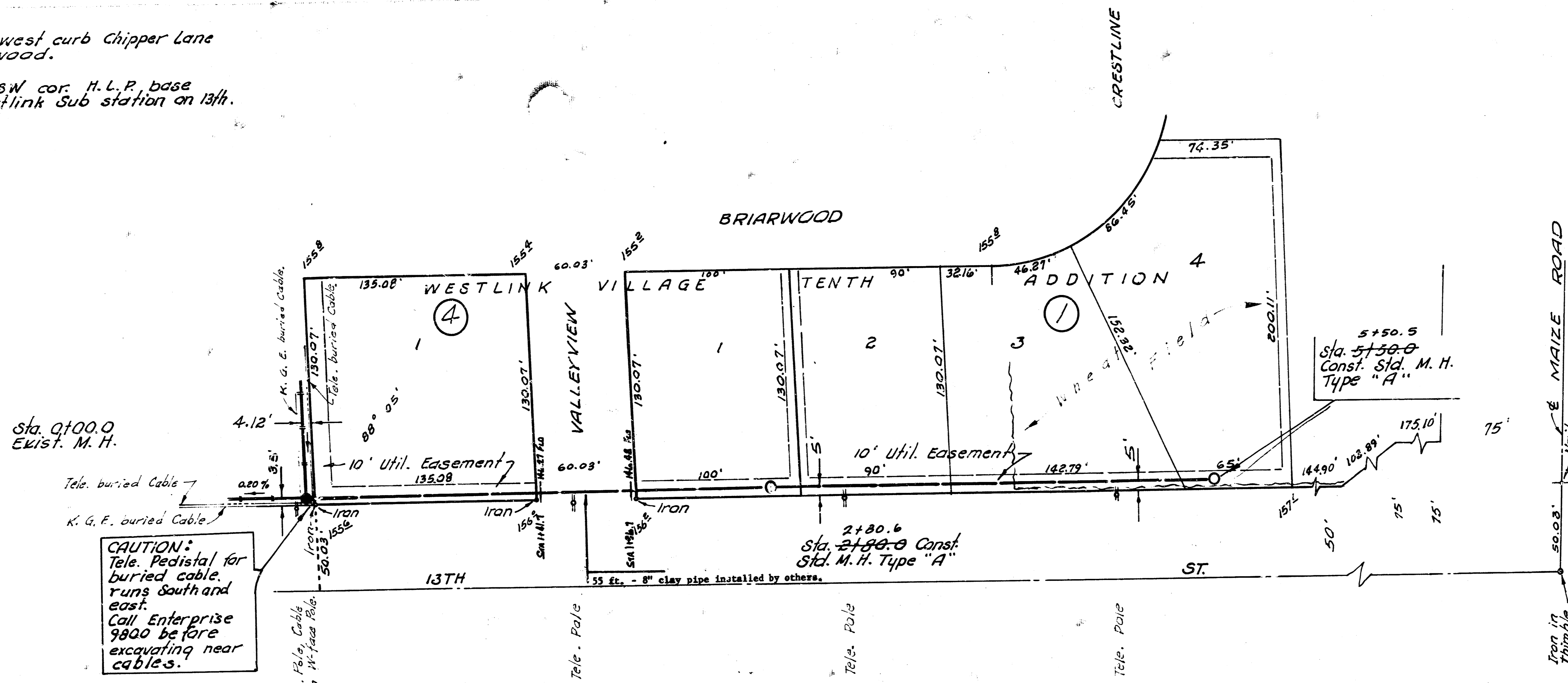


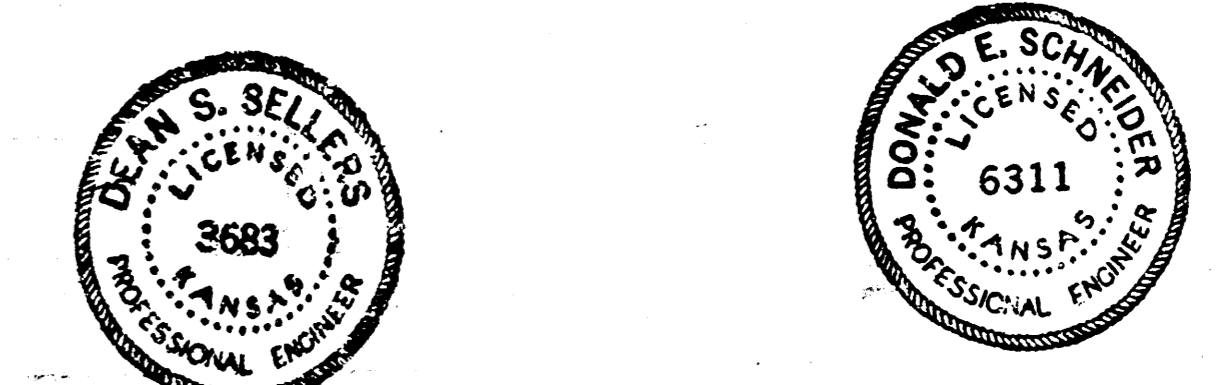
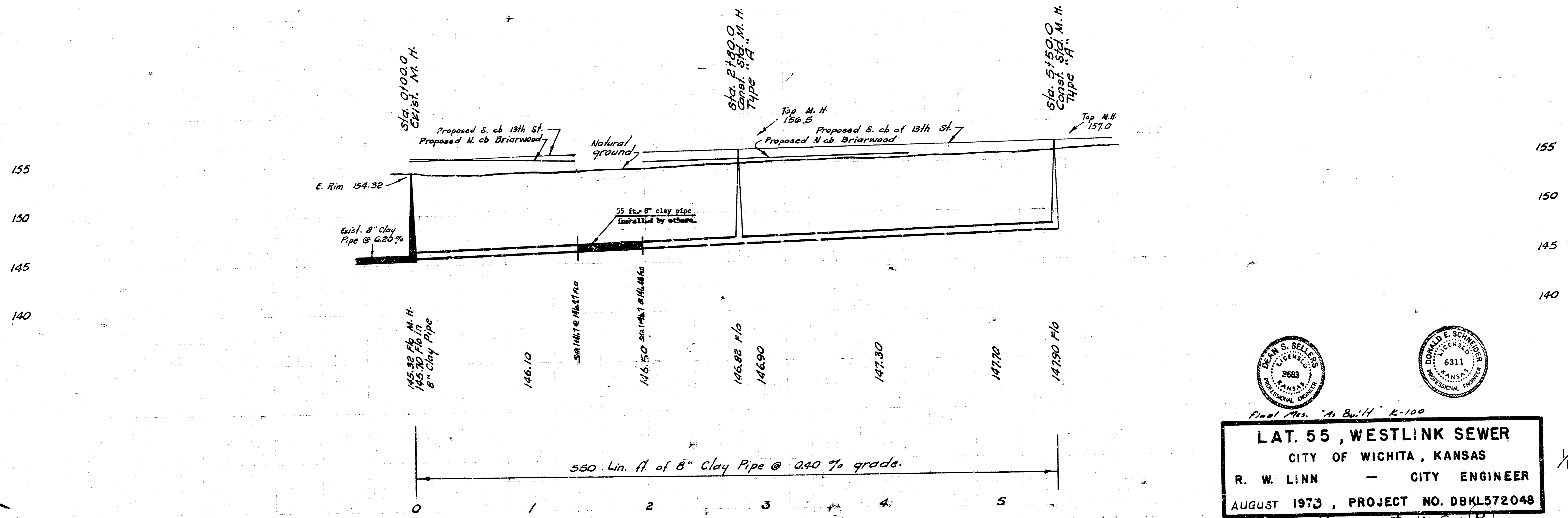
B. M. 155.470 "t" top west curb Chipper Lane at S. L. Briarwood.

B. M. 157.080 Top ball SW cor. H.L.P. base S-Side K.G.E. Westlink Sub station on 13th.



**CAUTION:**  
Tele. Pedestal for buried cable runs south and east. Call Enterprise 9800 before excavating near cables.

Plan Scale 1" = 40'  
Profile Scale 1" = 40' Horiz.  
1" = 5' Vert.



**LAT. 55, WESTLINK SEWER**  
CITY OF WICHITA, KANSAS  
R. W. LINN - CITY ENGINEER  
AUGUST 1973, PROJECT NO. DBKL572048

FILMED FROM THE BEST AVAILABLE COPY....