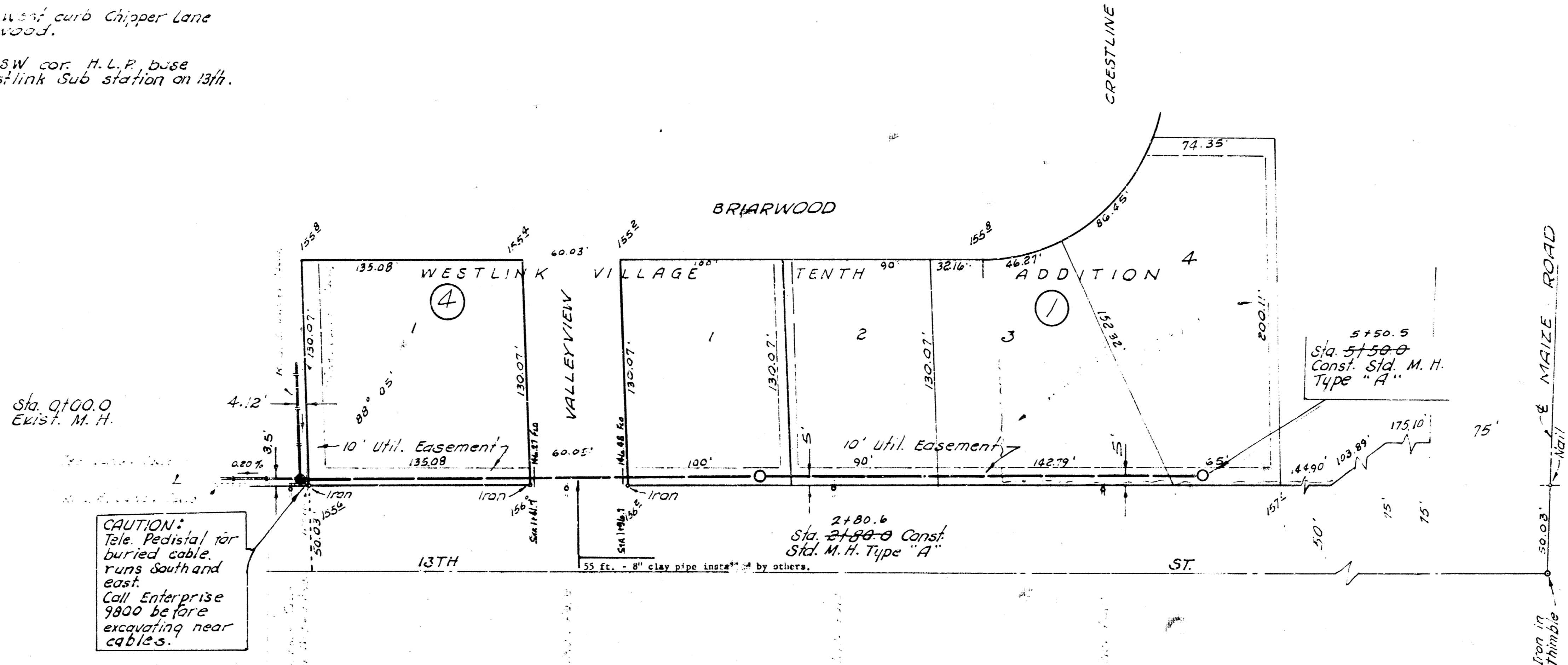
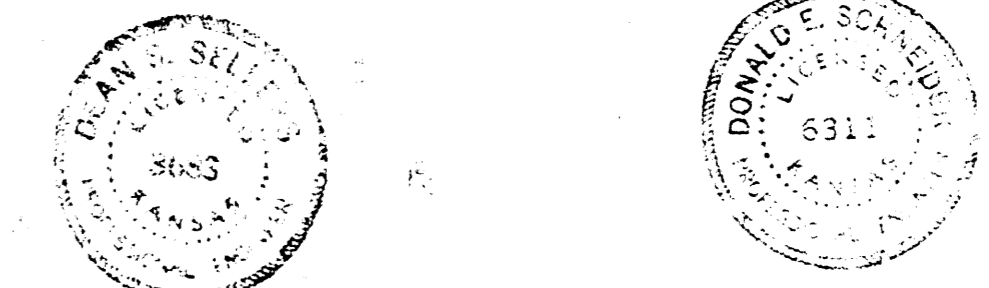
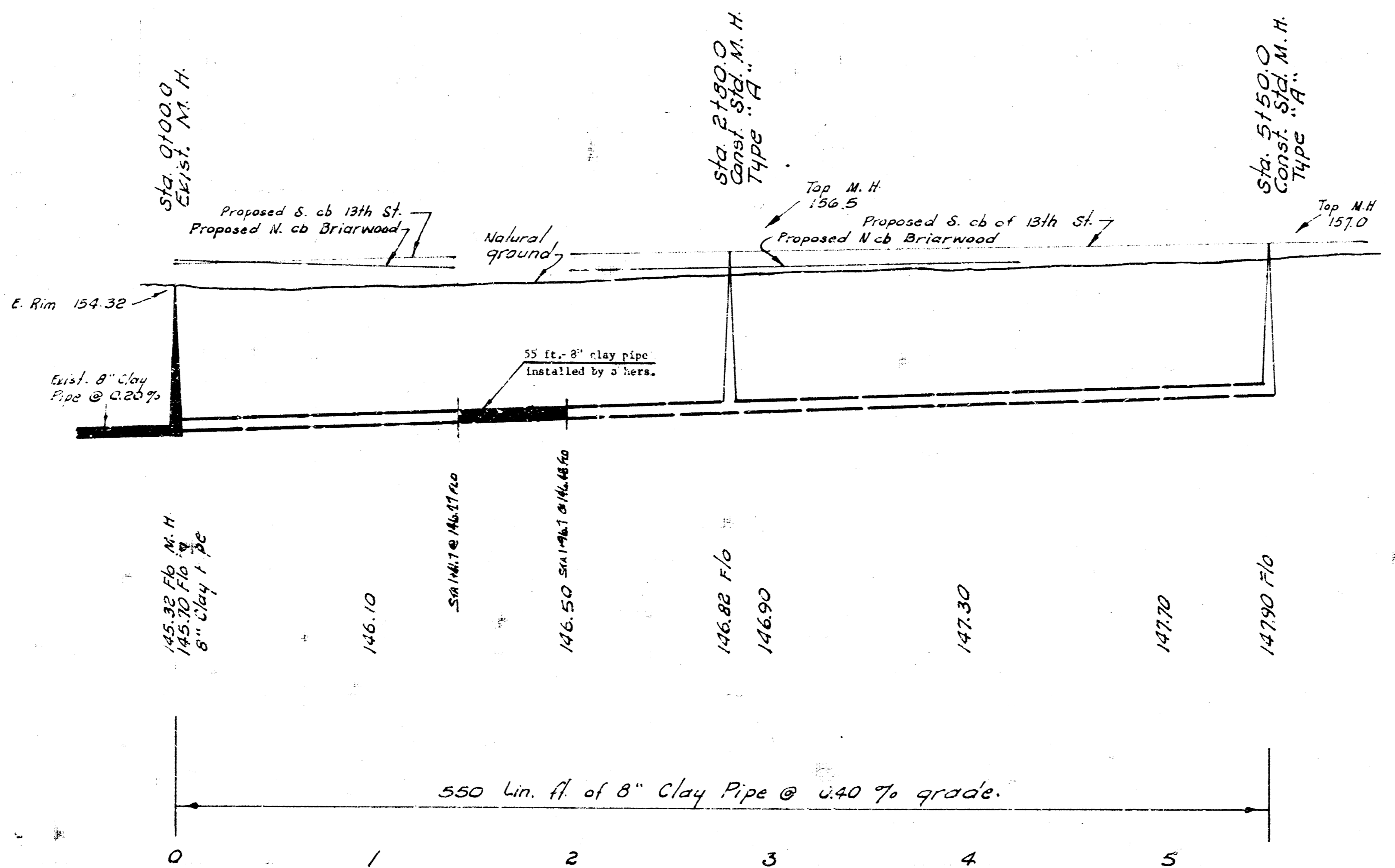


B. M. 155.470 4" top west curb Chipper Lane at S. L. Briarwood.  
 B. M. 157.090 Top ball SW cor. H. L. P. base S-Side K & E. Westlink Sub station on 13th.



Plan Scale 1" = 40'  
 Profile Scale 1" = 5' Vert.

CAUTION: This Pedestal for buried cable runs south and east. Call Enterprise 9800 before excavating near cables.



**LAT. 55, WESTLINK SEWER**  
 CITY OF WICHITA, KANSAS  
 R. W. LINN - CITY ENGINEER  
 AUGUST 1973, PROJECT NO. DBKL572048