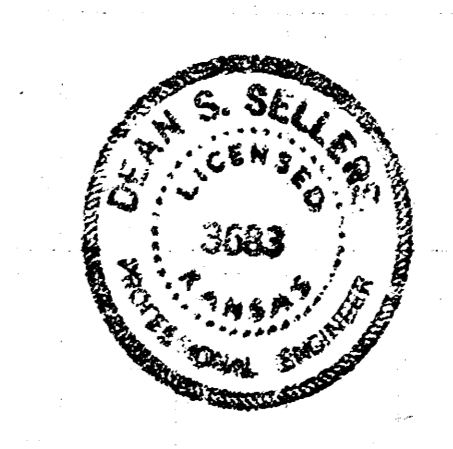
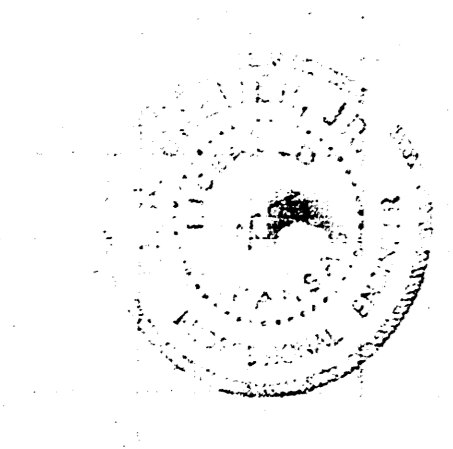
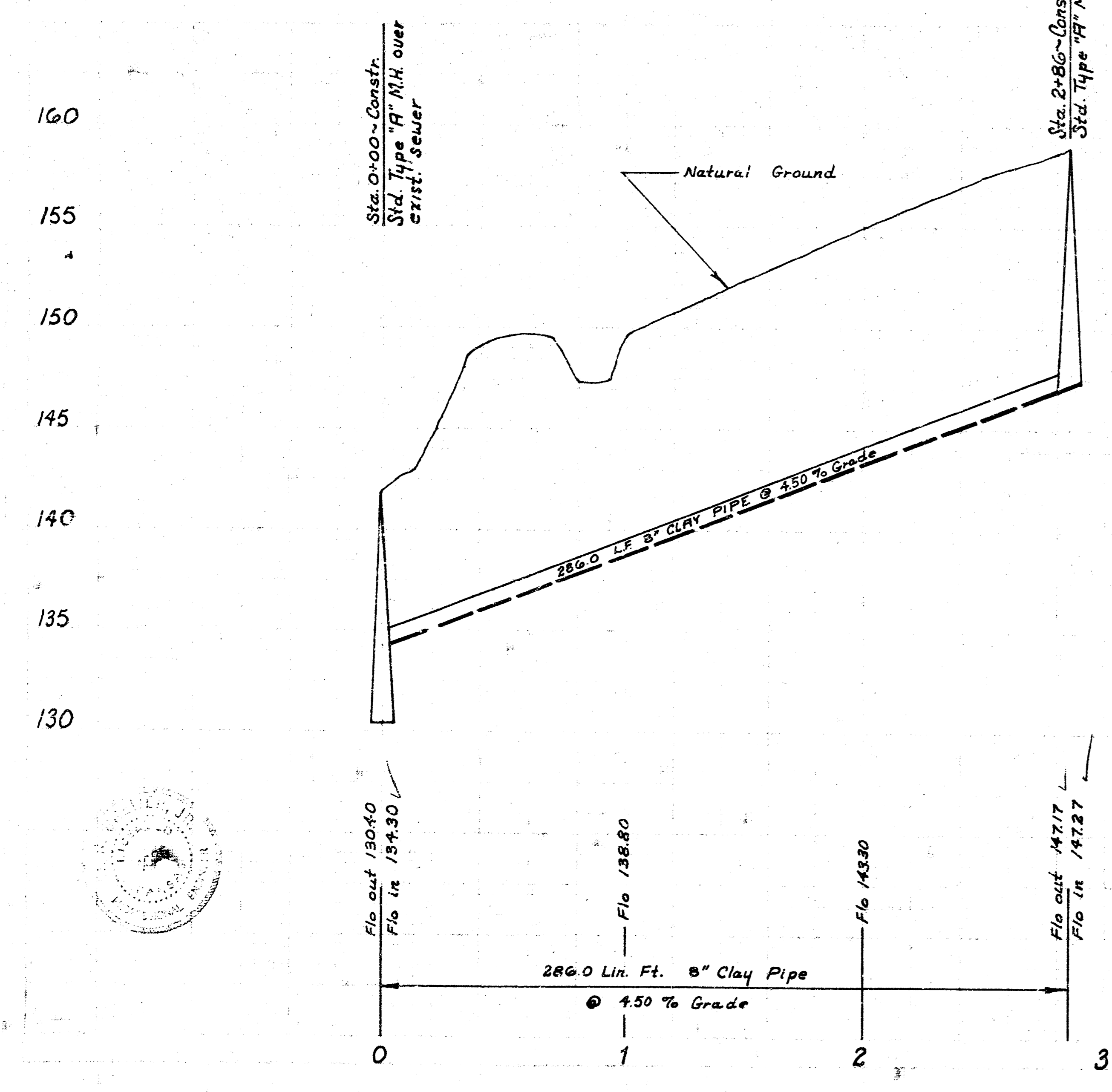
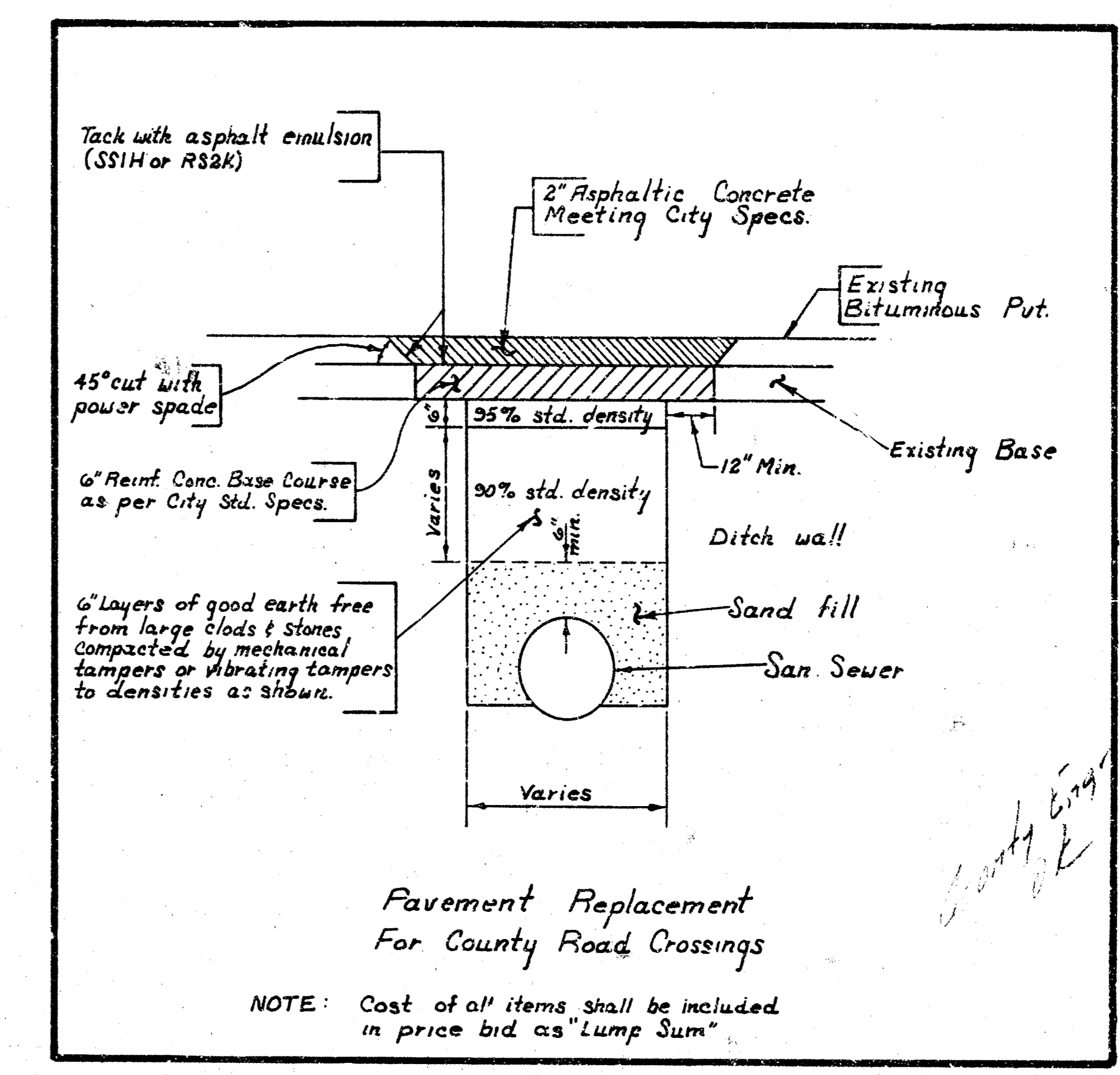


Permits sold see sheet #2

B.M. 142.26 ~ Std. 41.35 S. & 52.5 E. of both Central & Maize
 B.M. 149.57 ~ R.R. spk. S-face P.P. SW. cor. lot 1, blk. 1, Toh-N-Hah Village, being 3rd P.P. N. of Squaw Lane on E.S. Maize Road

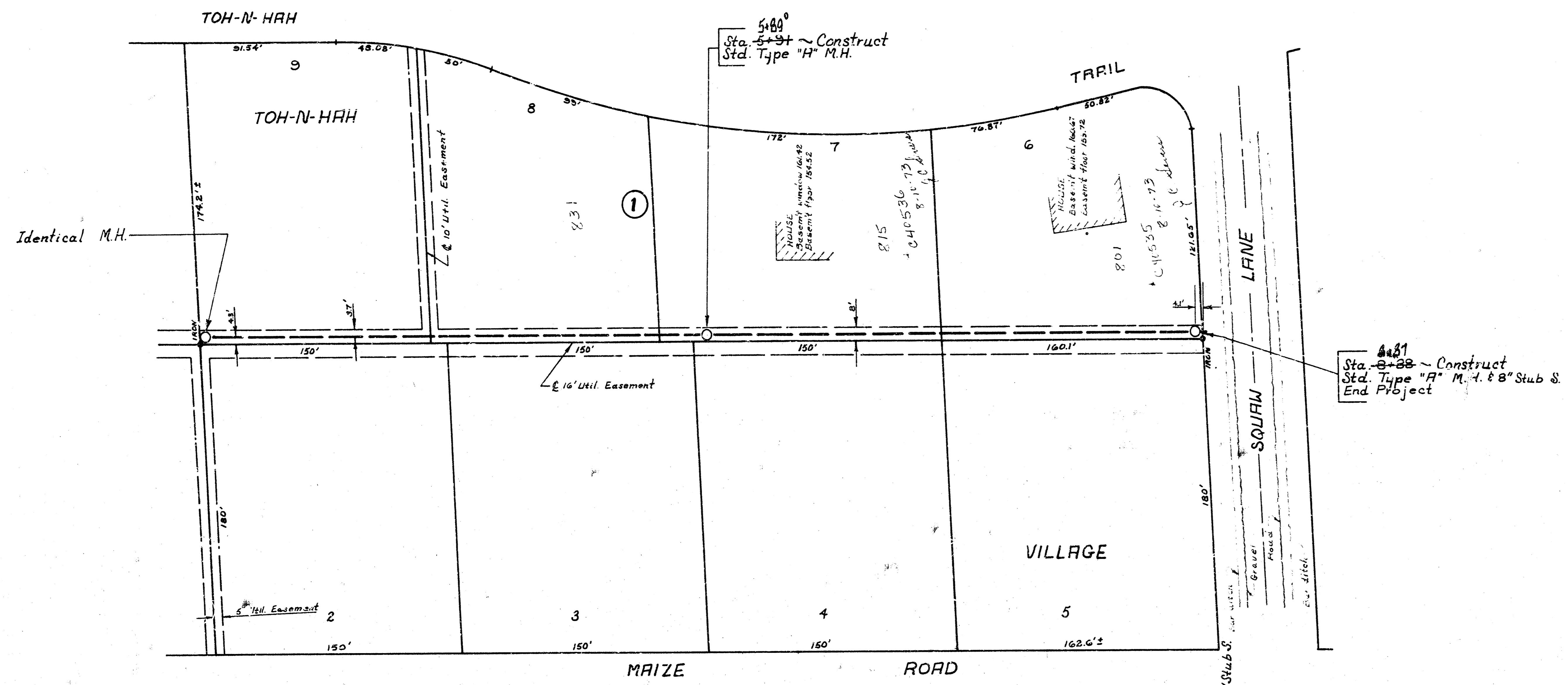
Plan Scale ~ 1" = 40'
 Profile Scale ~ Horiz. 1" = 40'
 Vert. 1" = 5'



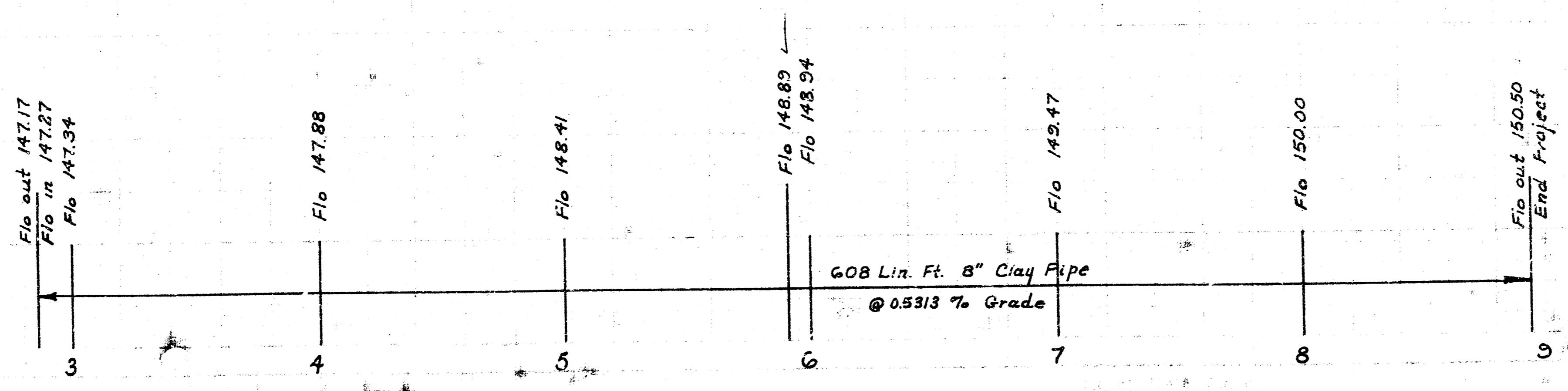
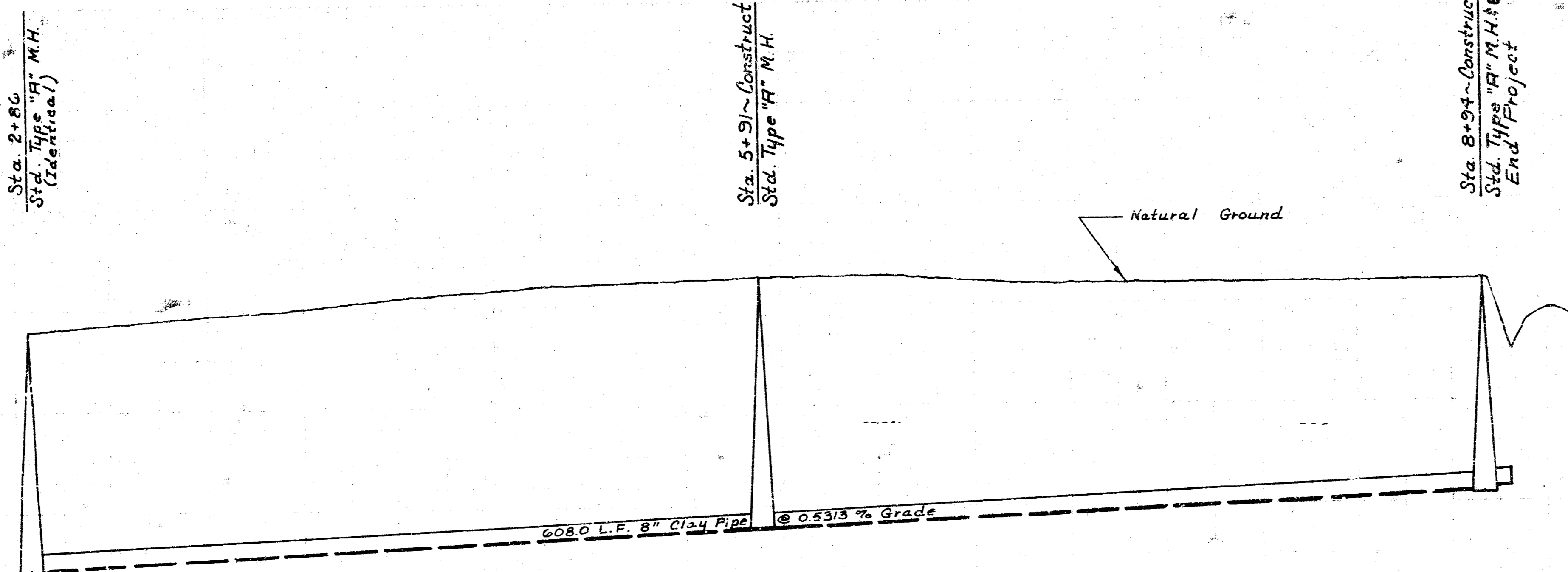
As Built Plans 14 Sept. 73 from K-106

LATERAL 58
WESTLINK INTERCEPTOR
CITY OF WICHITA
R.W. LINN-CITY ENGINEER
 DATE JULY 1973 PROJ. NO. DBKL 573028

10 sec. Engr
 1-50' water



Plan Scale ~ 1" = 40'
 Profile Scale ~ Vert. 1" = 5'
 Horiz. 1" = 40'



2/2

14

R

5

10