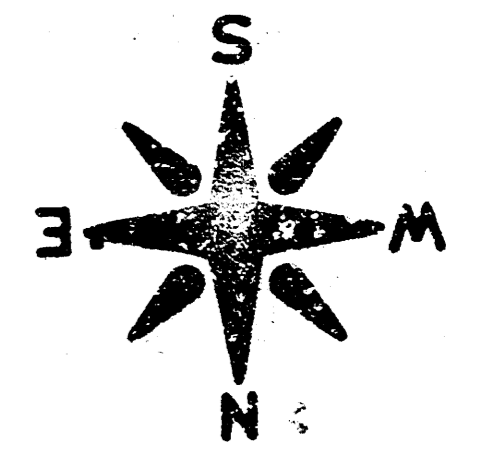
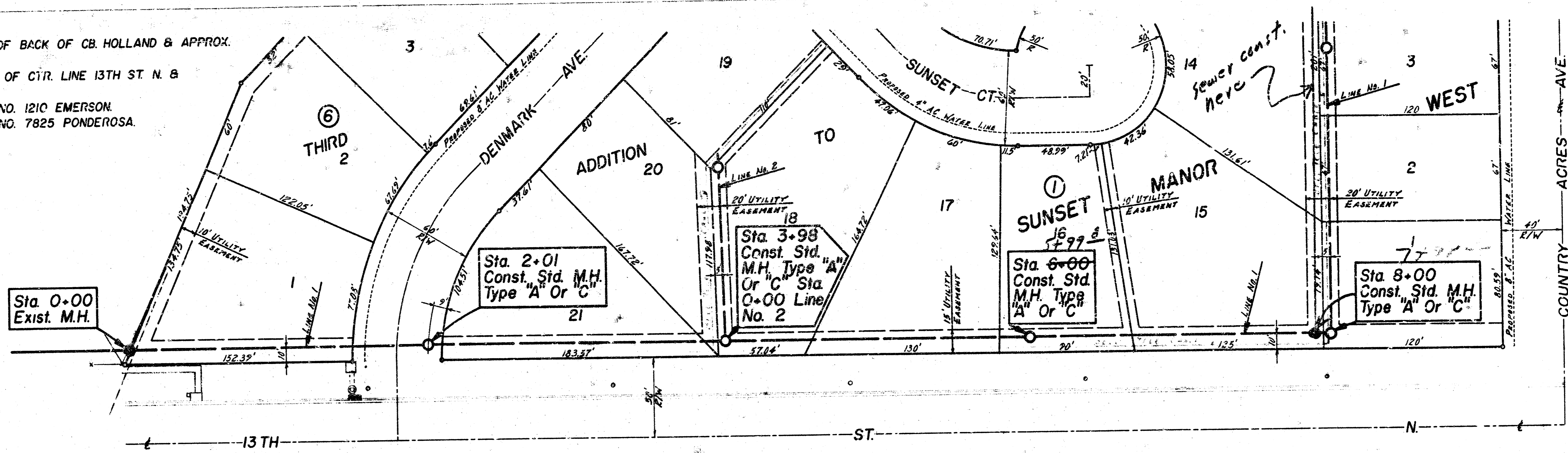
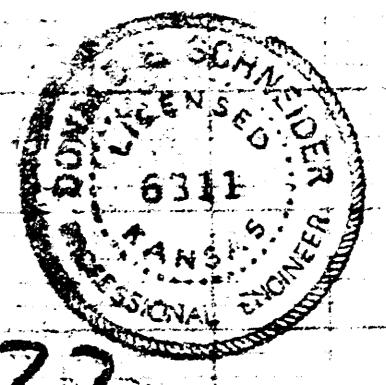
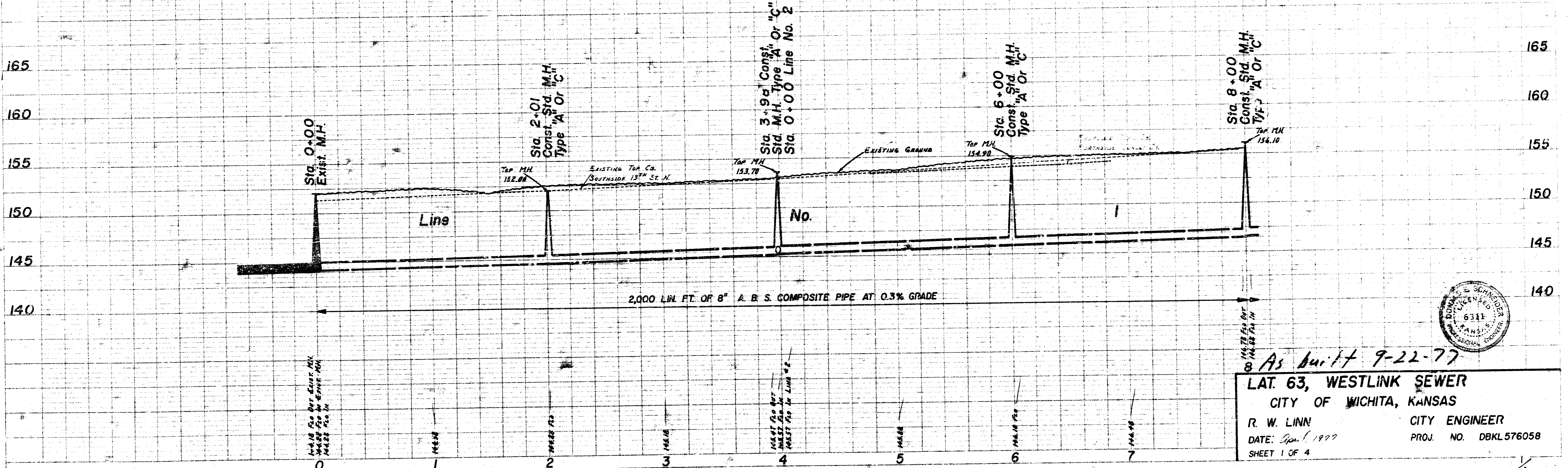


B.M. 15315 R.R. SPK. W-FACE PP 2' E. OF BACK OF CB. HOLLAND & APPROX.
 25' N. OF N.L. 13TH ST. N.
 B.M. 15619 CITY STD., 42.3' E. & 44' N. OF CTR. LINE 13TH ST. N. &
 COUNTRY ACRES AVE
 B.M. 15767 NW COR. CONC. PORCH HO. NO. 1210 EMERSON
 B.M. 15947 NW COR. CONC. PORCH HO. NO. 7825 PONDEROSA

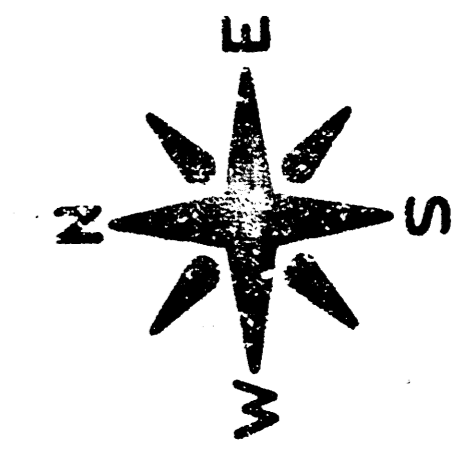
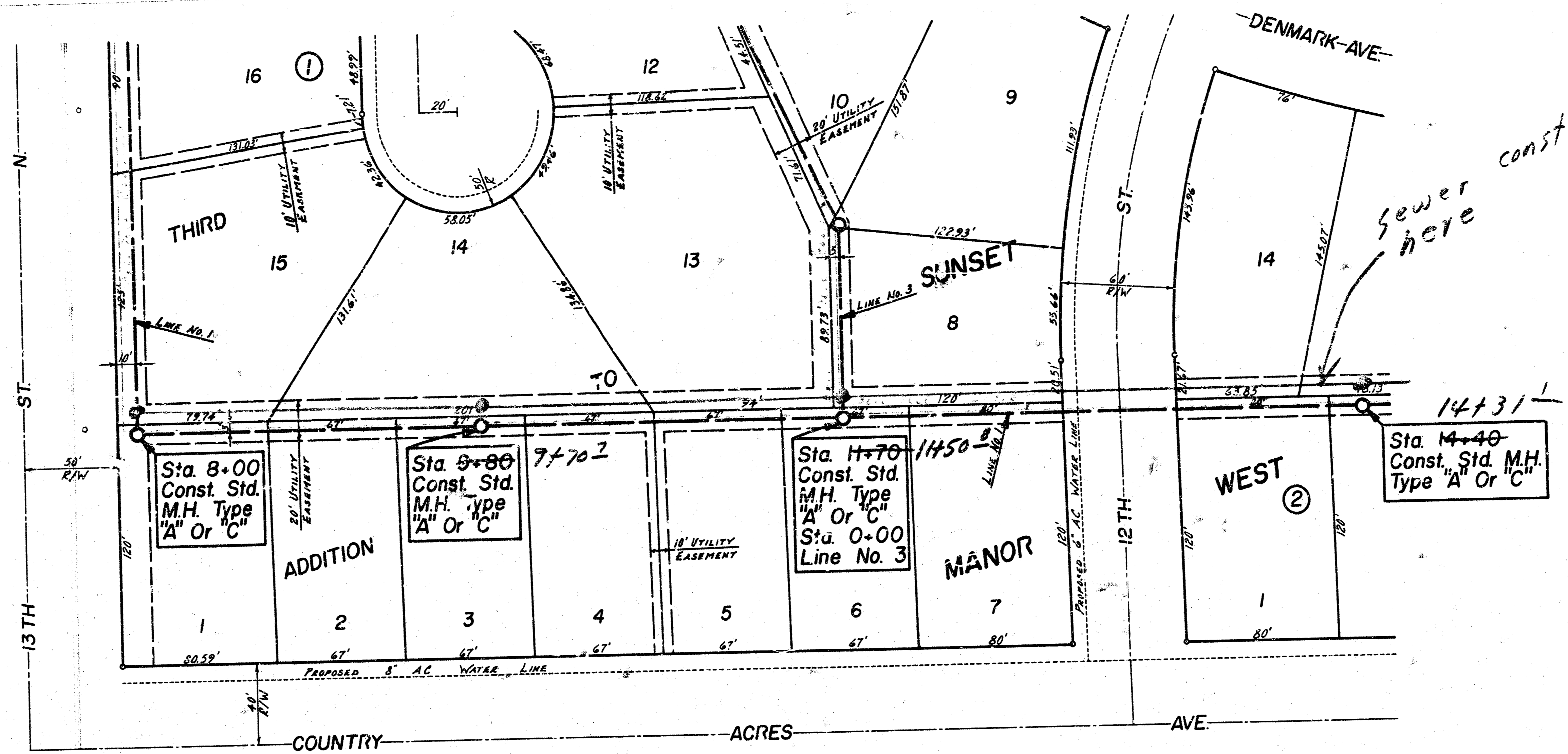


SCALE =
 PLAN 1" = 40'
 PROFILE 1" = 40' HOR.
 1" = 5' VERT

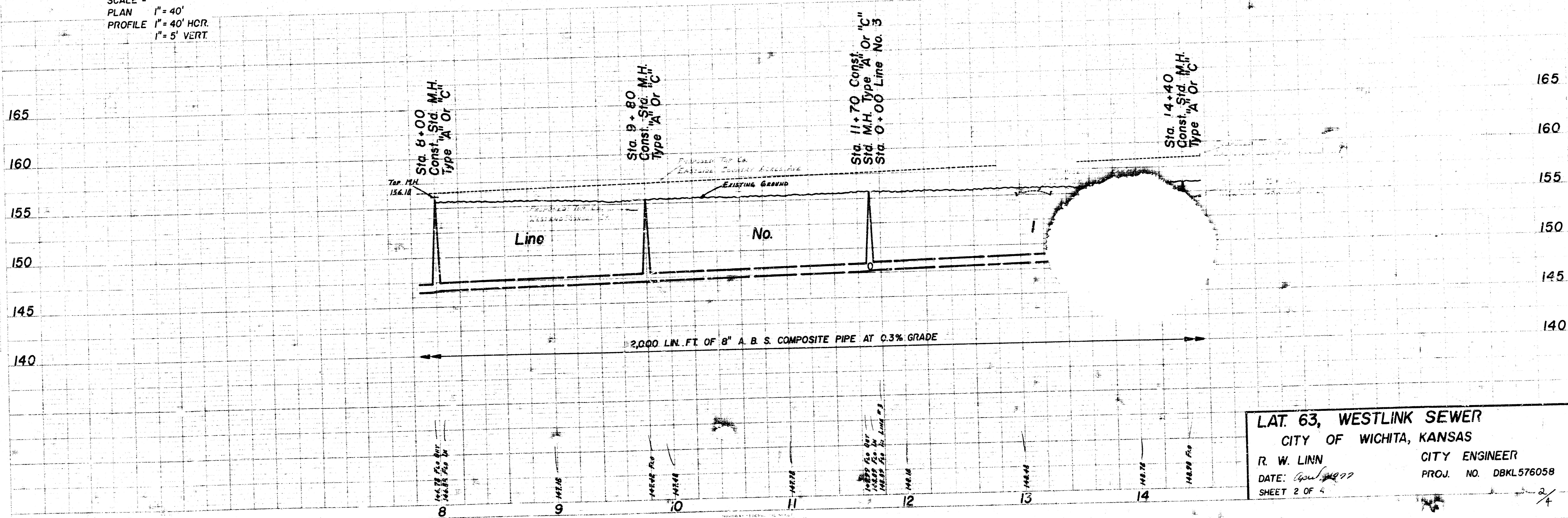


As built 9-22-77
LAT. 63, WESTLINK SEWER
 CITY OF WICHITA, KANSAS
 R. W. LINN CITY ENGINEER
 DATE: Sept. 1, 1977 PROJ. NO. DBKL576058
 SHEET 1 OF 4

B.M. 153.15 R.R. SPK. W-FACE PP. 2' E. OF BACK OF CB.
 HOLLAND & APPROX. 25' N. OF N.L. 13TH ST. N.
 B.M. 156.19 CITY STD., 42.3' E. & 44' N. OF CTR. LINE 13TH
 ST. N. & COUNTRY ACRES AVE.
 B.M. 157.67 NW COR. CONC. PORCH HO. NO. 1210 EMERSON.
 B.M. 159.47 NW COR. CONC. PORCH HO. NO. 7825 PONDEROSA.

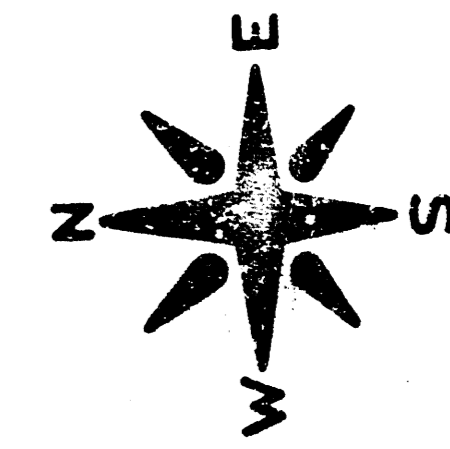
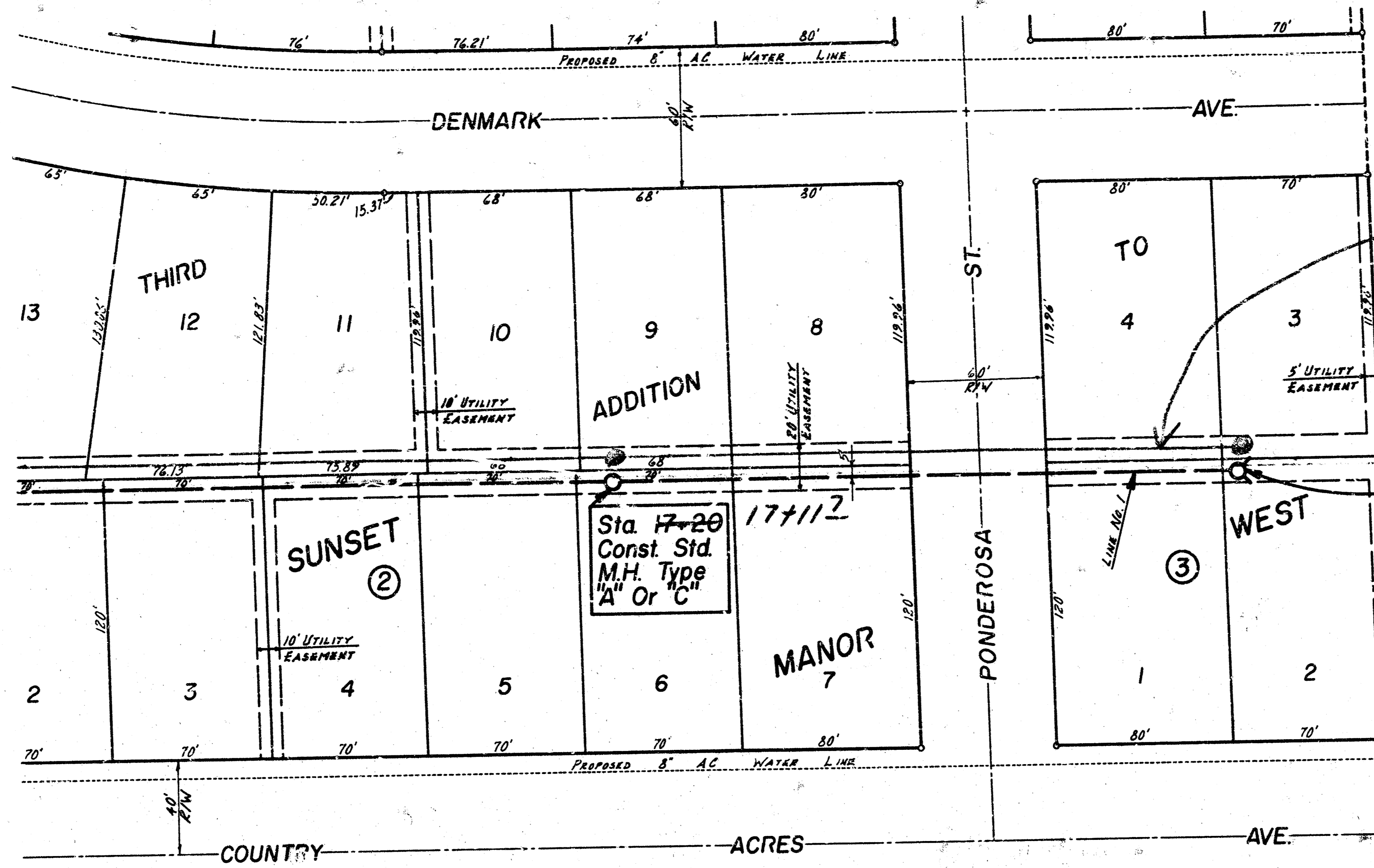


SCALE =
 PLAN 1" = 40'
 PROFILE 1" = 40' HCR.
 1" = 5' VERT.



LAT. 63, WESTLINK SEWER
 CITY OF WICHITA, KANSAS
 R. W. LINN CITY ENGINEER
 DATE: April 1997 PROJ. NO. DBKL576058
 SHEET 2 OF 4

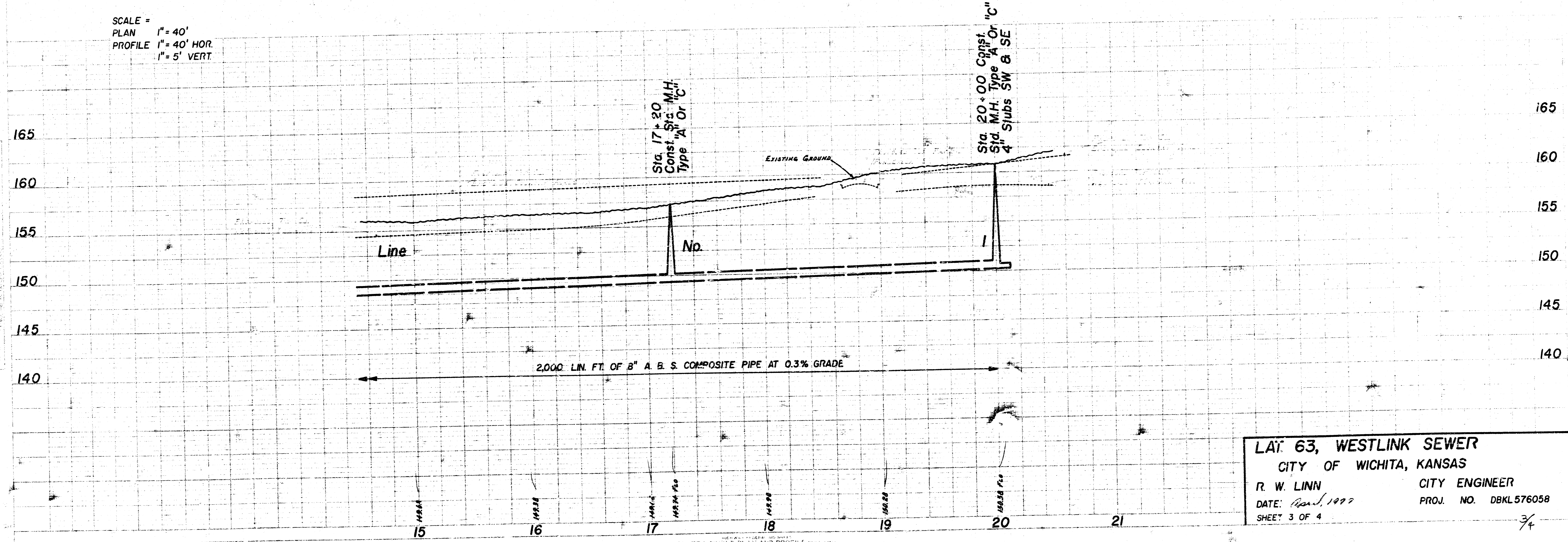
B.M. 15315 R.R. SFK. W-FACE PP 2' E. OF BACK OF CB.
 HOLLAND & APPROX. 25' N. OF NL 13TH ST. N.
 B.M. 15619 CITY STD., 42.3' E. & 44' N. OF CTR. LINE 13TH
 ST. N. & COUNTRY ACRES AVE.
 B.M. 15767 NW COR. CONC. PORCH HO. NO. 1210 EMERSON.
 B.M. 15947 NW COR. CONC. PORCH HO. NO. 7825 PONDEROSA.



sewer const. here

19+91'
 Sta. 20+00 Const. Sid. M.H. Type "A" Or "C" 4" Stubs SW & SE

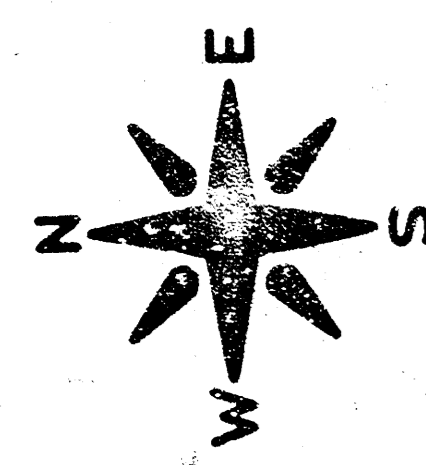
SCALE =
 PLAN 1" = 40'
 PROFILE 1" = 40' HOR.
 1" = 5' VERT



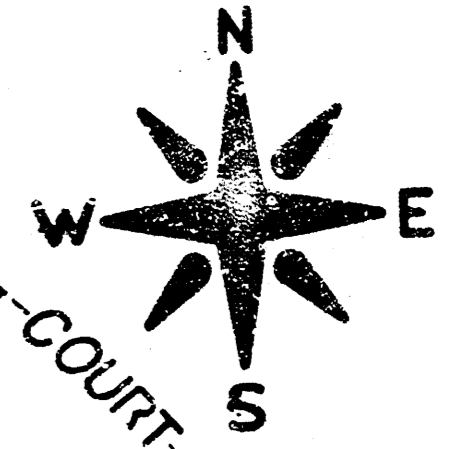
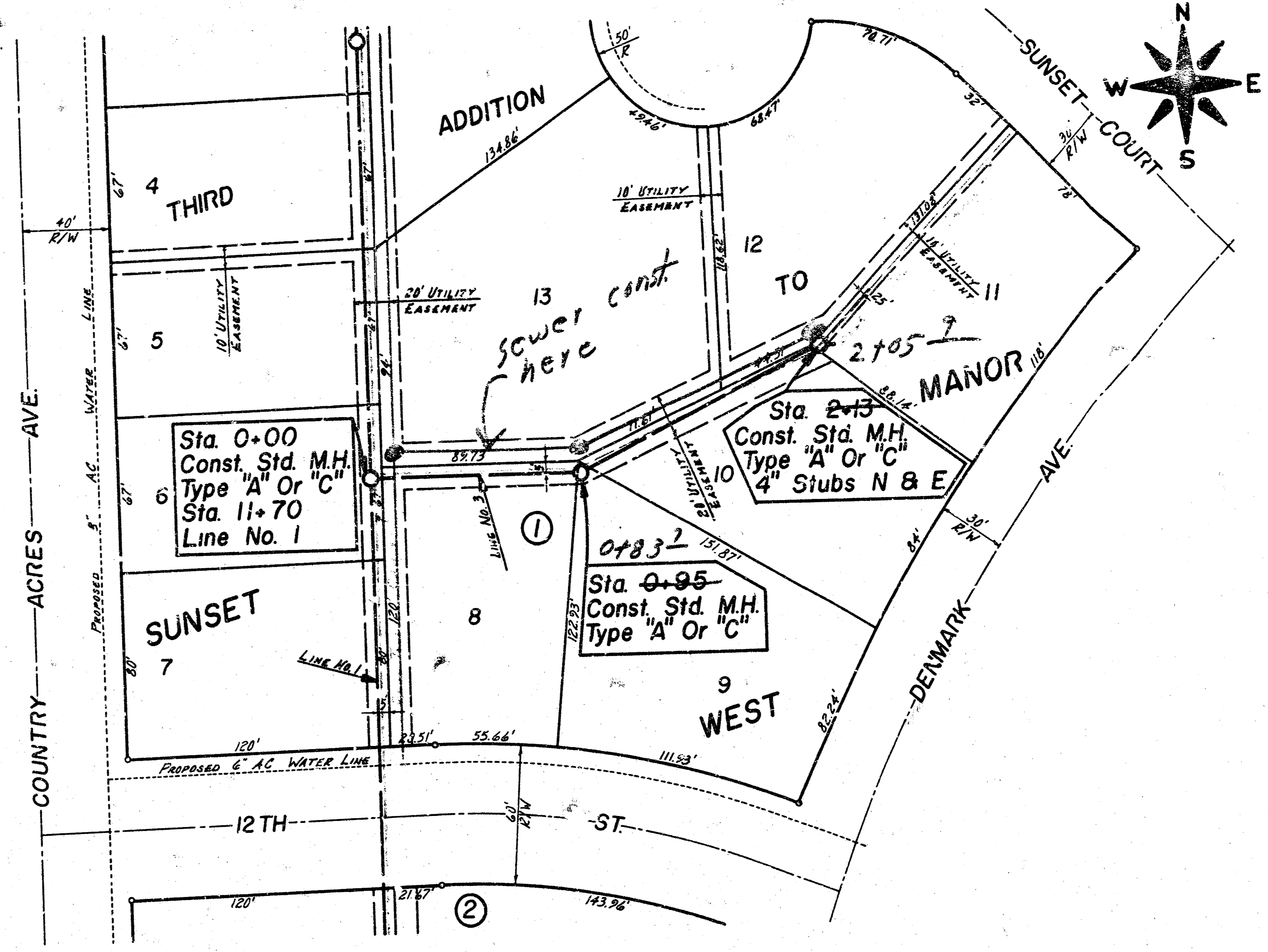
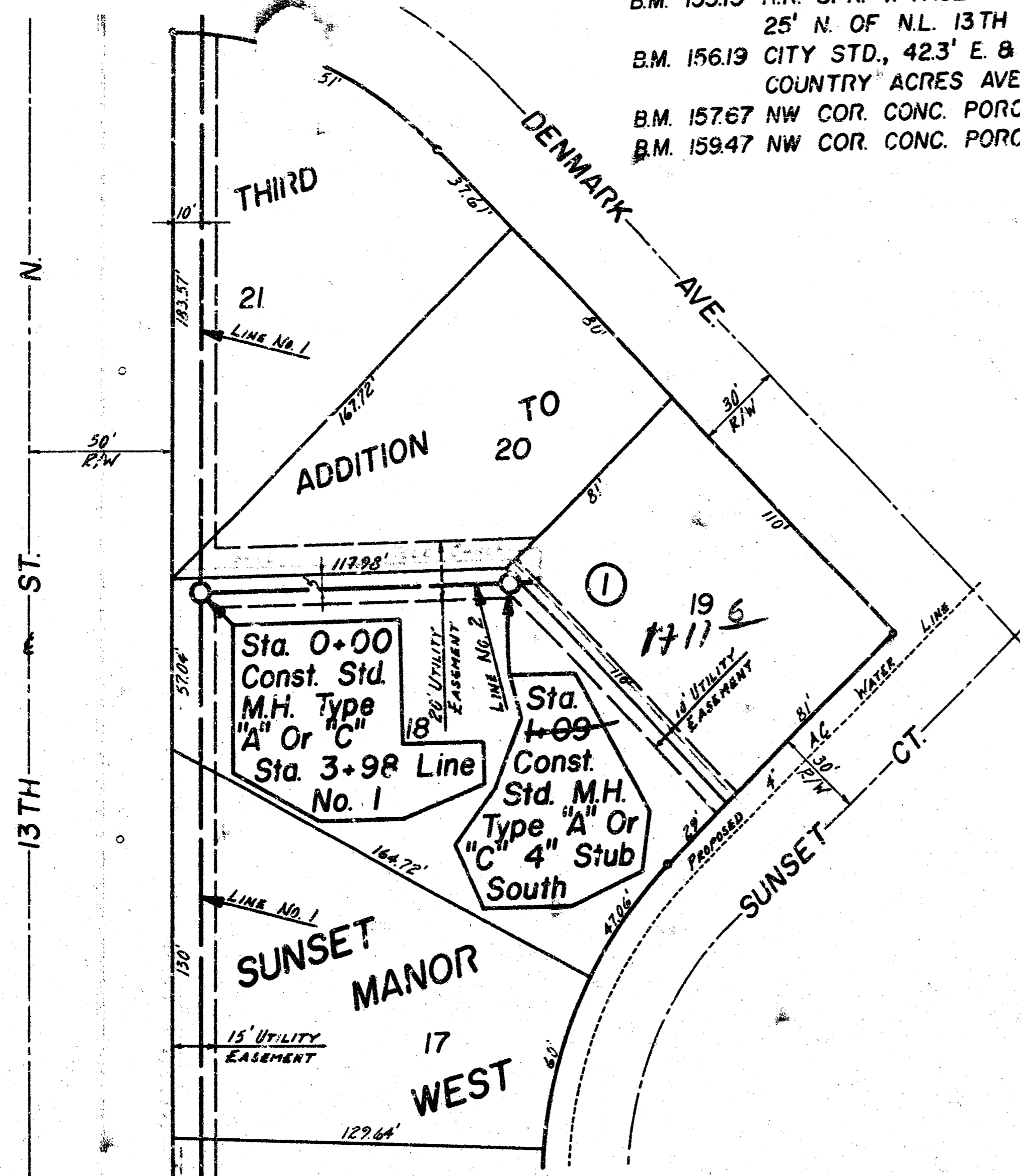
LAI 63, WESTLINK SEWER
 CITY OF WICHITA, KANSAS
 R. W. LINN CITY ENGINEER
 DATE: *Jan. 1999* PROJ. NO. DBKL576058
 SHEET 3 OF 4

PLAN
 R. W. LINN
 281

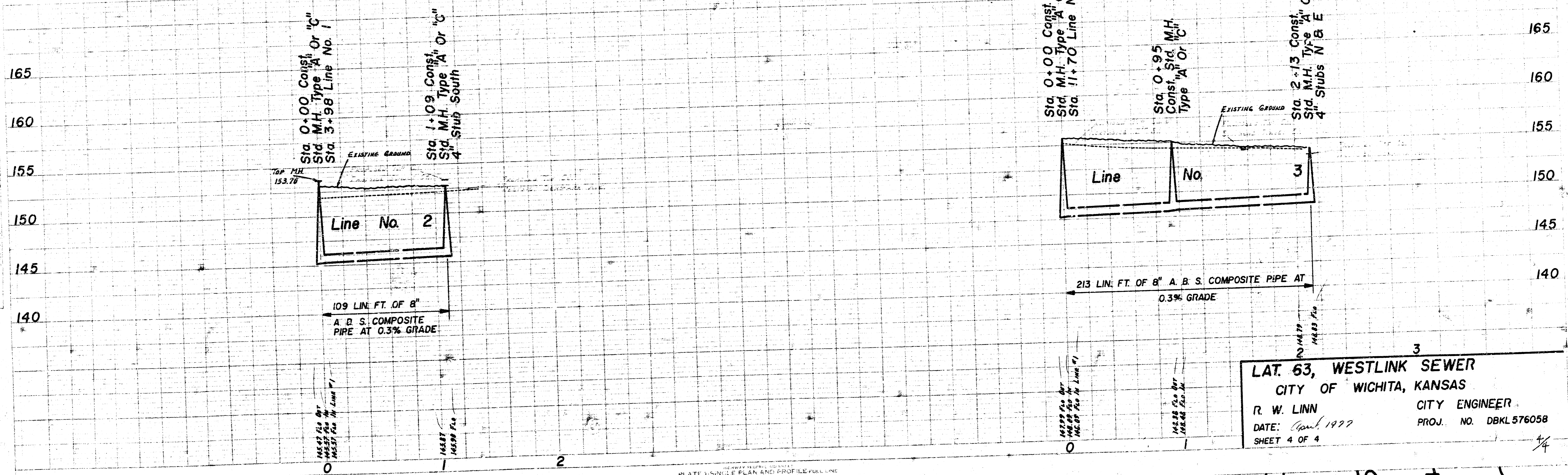
PLATE SINGLE PLAN AND PROFILE FULL LINE
 1/4" = 1" HORIZONTAL
 1/8" = 1" VERTICAL



B.M. 15315 R.R. SPK. W-FACE PP 2' E. OF BACK OF CB. HOLLAND & APPROX.
 25' N. OF N.L. 13TH ST. N.
 B.M. 15619 CITY STD., 42.3' E. & 44' N. OF CTR. LINE 13TH ST. N. &
 COUNTRY ACRES AVE.
 B.M. 15767 NW COR. CONC. PORCH HO. NO. 1210 EMERSON
 B.M. 15947 NW COR. CONC. PORCH HO. NO. 7825 PONDEROSA.



SCALE =
 PLAN 1" = 40'
 PROFILE 1" = 40' HOR.
 1" = 5' VERT.



LAT. 63, WESTLINK SEWER
CITY OF WICHITA, KANSAS
 R. W. LINN CITY ENGINEER
 DATE: April 1977 PROJ. NO. DBKL 576058
 SHEET 4 OF 4

14 10 4 5