

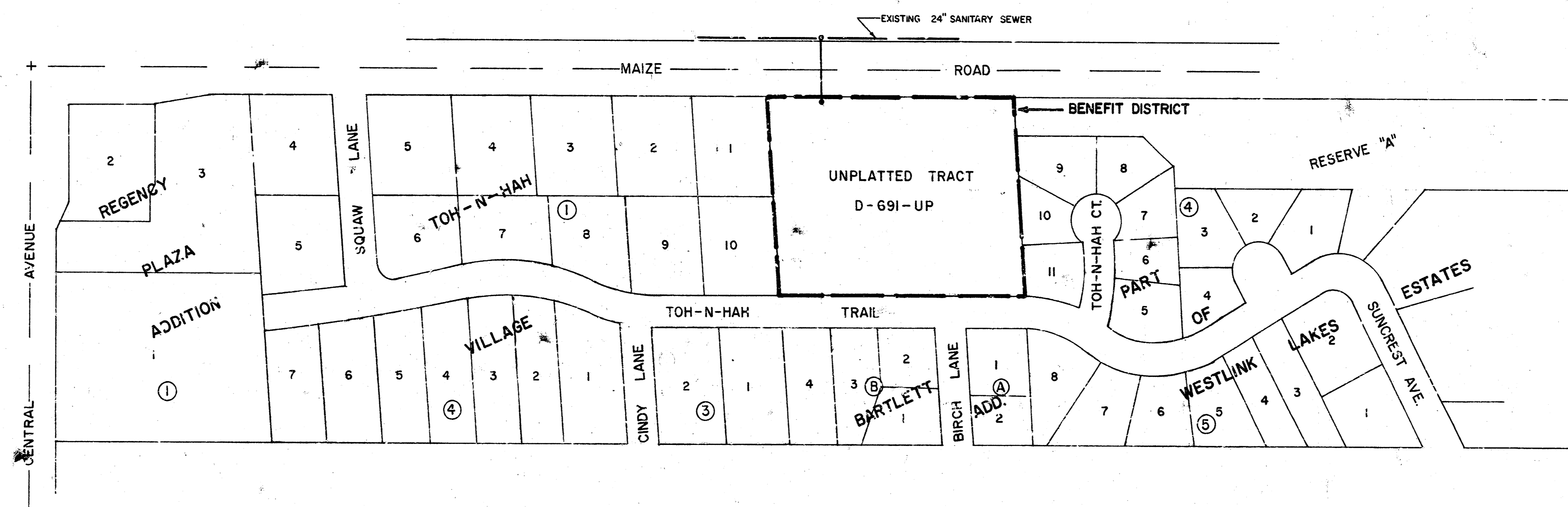
# LATERAL 83, WESTLINK SEWER

PROJECT NO.

468-76-245-81602-000-000-001

CITY OF WICHITA, KANSAS  
MICHAEL E. LINDEBAK, CITY ENGINEER  
OCTOBER, 1986

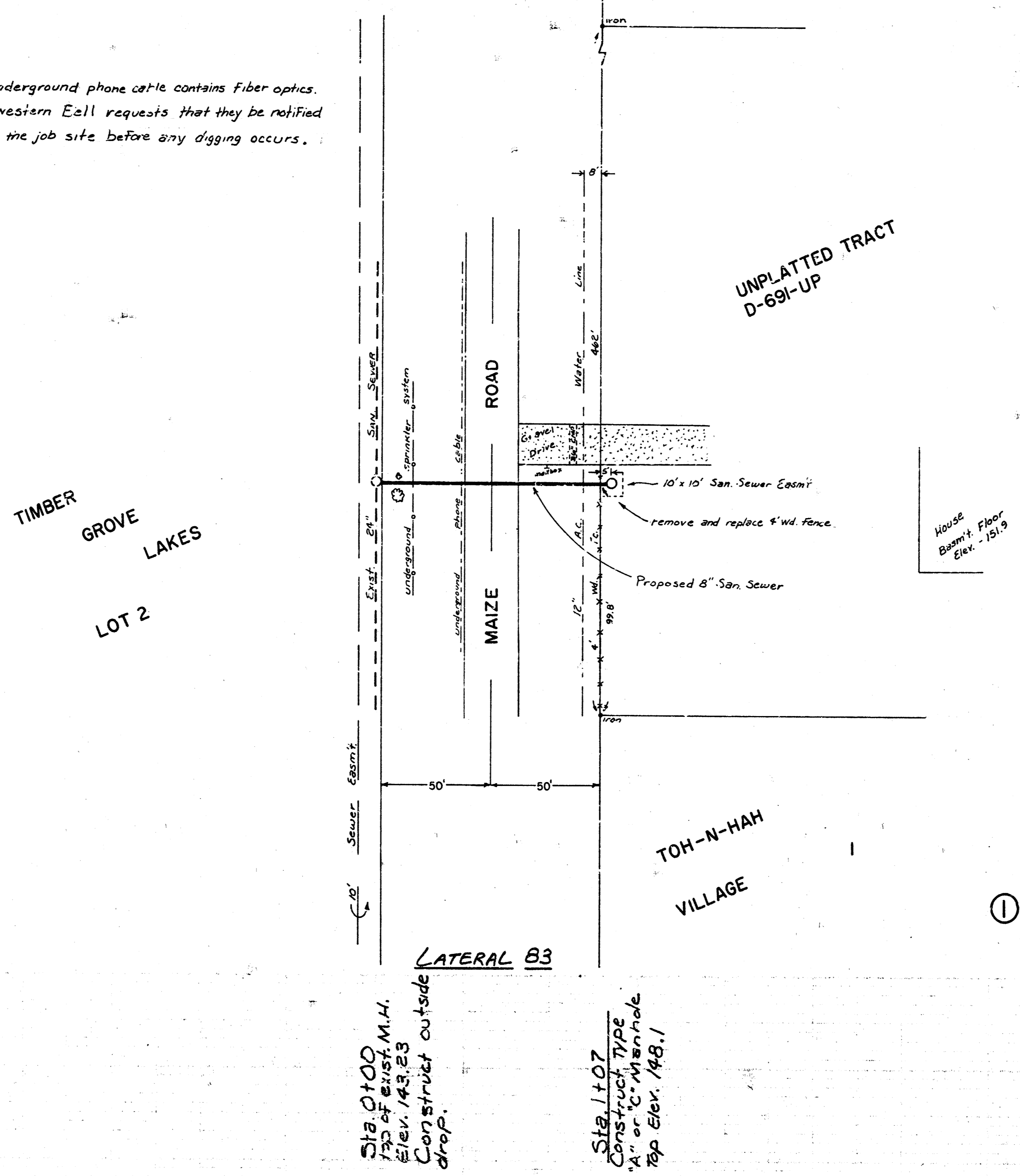
*This Plan delivered to City  
uncompleted per City request  
12-13-86*



1. The CONTRACTOR shall be responsible for preserving property irons. The CONTRACTOR shall be required to re-establish any property irons which are damaged or destroyed by his construction operations. Such irons shall be re-established by a LICENSED LAND SURVEYOR or a LICENSED PROFESSIONAL ENGINEER in accordance with state laws.
2. A portion of excess excavated material shall be mounded around manholes which extend more than one (1) foot above the existing ground. Such mounds shall be constructed with a six (6) foot diameter flat top with 4 to 1 side slopes down to the original ground. The elevation of the flat top of the mound shall be 0.4 foot below the top of the manhole.
3. The CONTRACTOR shall notify the utility companies of construction scheduling.
4. Existing utilities and their locations, as shown on the plans, represent the best information obtainable for design. Location information has been obtained from the various utility companies and is either from company record drawings or company provided field locations. The plan locations shown are not guaranteed. Additional existing utilities may also be encountered.

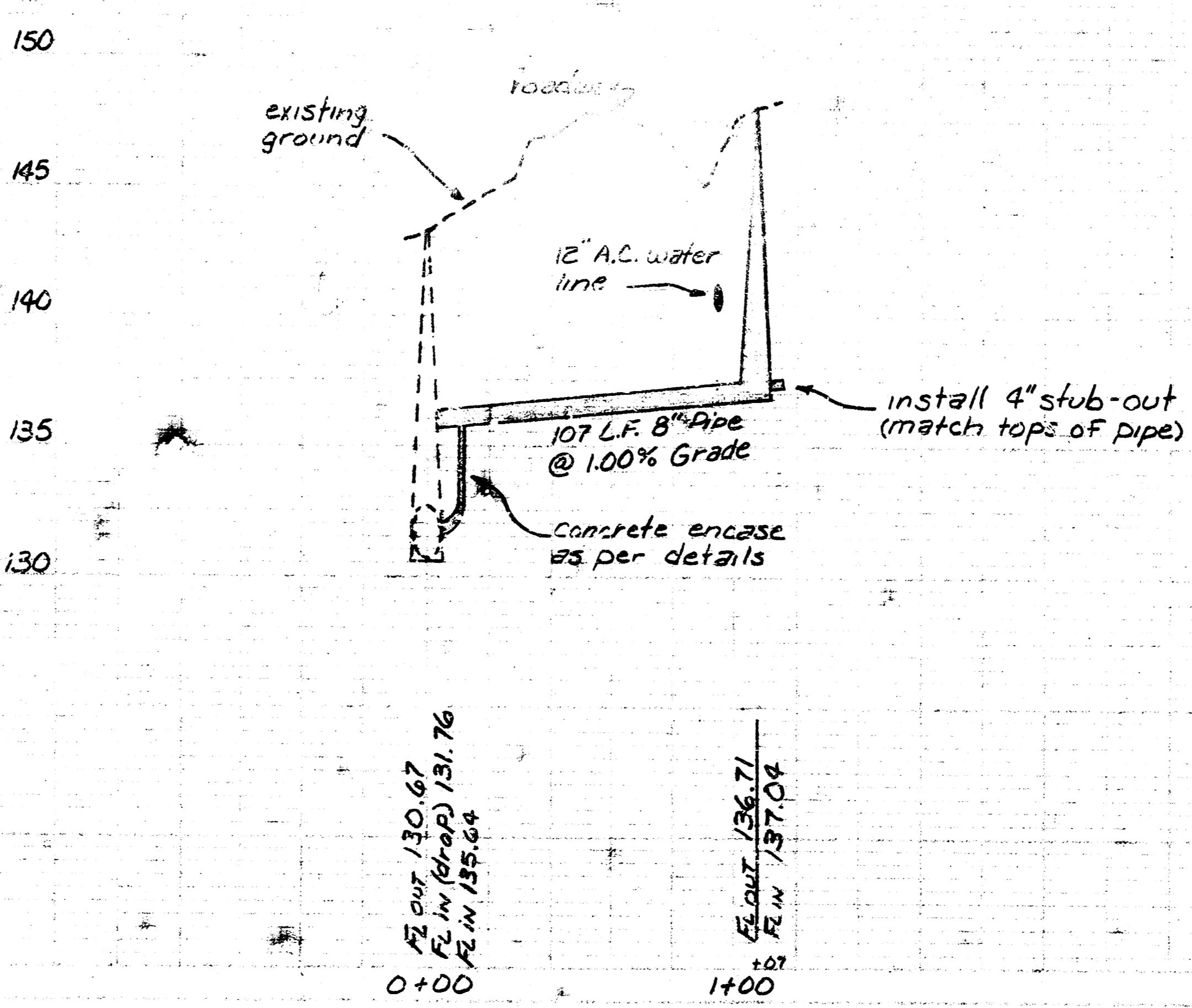
Note: The underground phone cable contains fiber optics. Southwestern E&I requests that they be notified and on the job site before any digging occurs.

This plan delivered to City  
uncompleted per City request  
12-19-86



SCALE  
PLAN 1"=40'  
PROFILE 1"=40' HORIZ.  
1"=5' VERT.

Benchmark - City of Wichita Benchmark Disc, 32' North and 38' East of the 1/4 Section Corner @ Maize Rd. and 9th St. North. Elev. - 152.28  
Benchmark - "a" chiseled on top of the S.W. Wing Wall of a R.C.B. crossing Maize Rd. @ Timber Grove Lake Office Park. Elev. - 146.24



WICHITA, KANSAS			
SANITARY SEWER EXTENSIONS			
PLAN AND PROFILE			
LATERAL B3, WESTLINK SEWER			
PROJECT NO. 468-76-245-81602-000-000-001			
CASTLE & ASSOCIATES ENGINEERS WICHITA, KANSAS	DSG C/M DR C/A CHW/C	DWG FILE NO. 8645-D-60,034	
DATE OCTOBER 1986	APP'G	SHEET NO. 2 OF	REV.

14 9 3 01