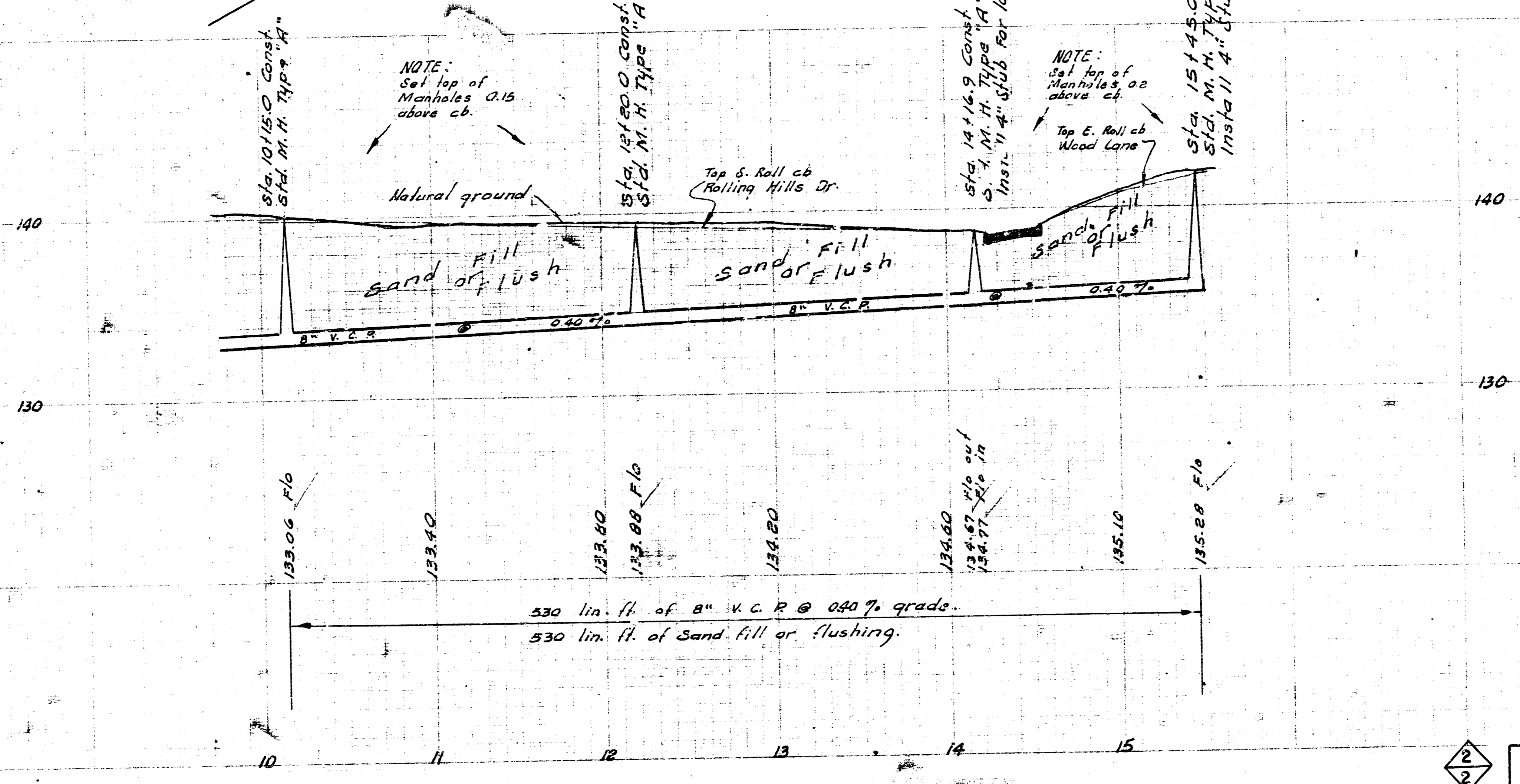
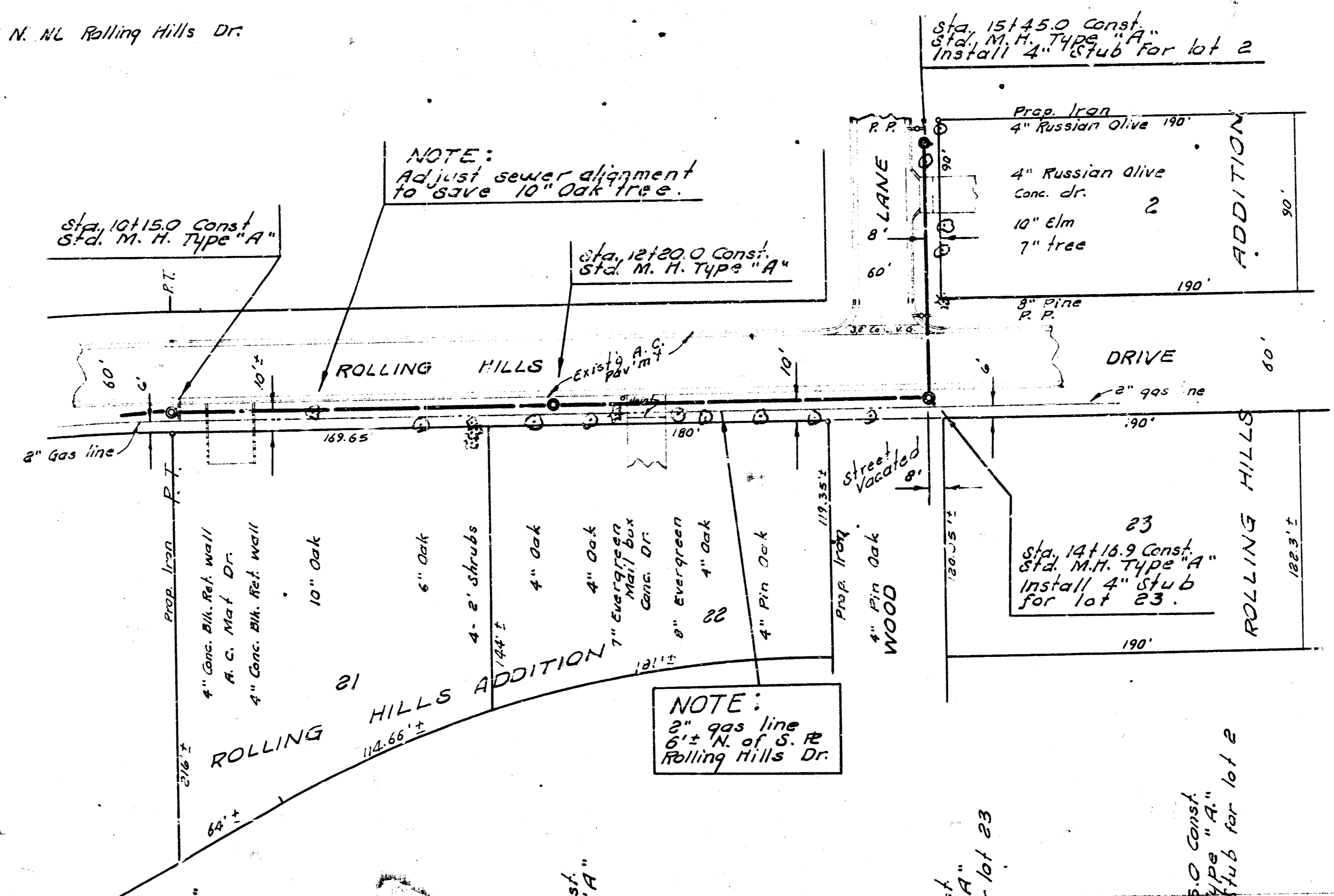
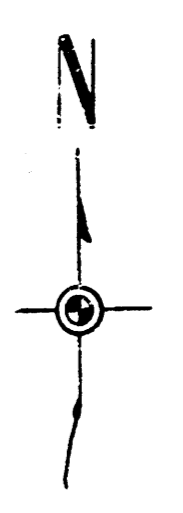


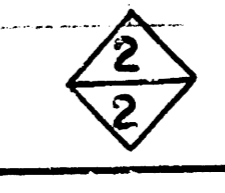
Survey by A. R. B. AR-41
Plan by J. W. J.
Checked by

LAT. 9, SUB. I, WESTLINK SEWER
CITY OF WICHITA, KANSAS
B. E. SMITH CITY ENGINEER
JULY 1968 PROJECT NO. C28-54

T. P. 14226 N. Rim M.H. W. Side Wood Lane & 70' N. N.L. Rolling Hills Dr.



LAT. 9, SUB. 1, WESTLINK SEWER PROJECT NO. C28-54



2 1 4 4